



14 Junie 2018

Geagte Belanghebbende en Geaffekteerde Party

RE: Aansoek om omgewingsmagtiging vir die voorgestelde Highlands-windkragaanleg en gepaardgaande infrastruktuur in die Oos-Kaap

WKN Windcurrent South Africa (Edms.) Bpk. stel die oprigting van die Highlands-windkragaanleg (WEF) en gepaardgaande infrastruktuur, insluitende netwerkverbindinge (die voorgestelde ontwikkeling), voor. Dit is naby Somerset-Oos in die Oos-Kaap geleë. Die voorgestelde ontwikkelingsterrein is binne die Cookhouse-ontwikkelingsone vir Hernubare Energie (REDZ) geleë (Figuur 1). Die gebied waarna vir ontwikkeling gekyk word binne hierdie sone beslaan ongeveer 9 000 hektaar.

Arcus Consultancy Services South Africa (Edms.) Bpk. ("Arcus") is aangestel as die onafhanklike omgewingsimpak-assesseringspraktisyn (EAP) om die omgewingsimpak-studieproses (EIA) vir omgewingsmagtiging ingevolge Hoofstuk 5 van die Wet op Nasionale Omgewingsbestuur, 1998 (Wet 107 van 1998 - NEMA) soos gewysig, vir die voorgestelde ontwikkeling te onderneem.

U ontvang hierdie aanvanklike kennisgewing omdat u as 'n Belanghebbende en Geaffekteerde Party (B&GP) geïdentifiseer is. Openbare deelname is 'n belangrike deel van die omgewingsmagtigingsproses. Dit bied B&GP's die geleentheid om inligting te verkry, kommentaar te lewer, kwessies wat kommer wek te opper en saam te werk aan die magtigingsproses. Kommentaar, voorstelle en insette van die publiek, saam met spesialiste se assesserings van die verskillende omgewingsimpakte van die projek, sal die Departement van Omgewingsake (DEA) met hul besluitnemingsproses help.

Met die oog op die verkryging van omgewingsmagtiging, asook voldoening aan bodvereistes gestel in die Departement van Energie se Aankoopprogram van Hernubare Energie vanaf Onafhanklike Kragprodusente (REIPPPP), is die projek in drie fases verdeel: Noord, Sentraal en Suid. 'n Spesialedoel-instrument (SPV) is vir elk van die drie fases gevorm. Elke fase sal uit twee toepassings, of konstruksieprosesse bestaan: een vir die windkragaanleg en een vir die onderskeie netwerkverbindinge. Die voorgestelde ontwikkeling bestaan dus uit ses komponente.

- Highlands North Wind Energy Facility (RF) (Edms.) Bpk.:
 - Highlands-Noord WEF Fase 1 bestaande uit tot 17 turbines **met 'n** opwekkingsvermoë van tot 5 MW elk;
 - Aansluiting by kragnetwerk en gepaardgaande infrastruktuur vir Highlands-Noord WEF Fase 1;
- Highlands Central Wind Energy Facility (RF) (Edms.) Bpk.:
 - Highlands-Sentraal WEF Fase 2: tot 14 turbines **met 'n opwekkingsvermoë van** tot 5 MW elk;
 - Aansluiting by kragnetwerk en gepaardgaande infrastruktuur vir Highlands-Sentraal WEF Fase 2;
- Highlands South Wind Energy Facility (RF) (Edms.) Bpk.:
 - Highlands-Suid WEF Fase 3: tot 18 turbines **met 'n opwekkingsvermoë van** tot 5 MW elk;

- Aansluiting by kragnetwerk en gepaardgaande infrastruktuur vir Highlands-Suid WEF Fase 3;

Die ligging van die ses komponente binne die voorgestelde ontwikkelingsperseel word in Figuur 2 aangetoon. Die gesamentlike voetspoor van **die ses ontwikkelingskomponente sal slegs 'n klein gedeelte** (ongeveer 2%) van die grond binne hierdie grens beslaan en sal heeltemal binne die REDZ val. Nuwe regulasies gepubliseer in Staatskennisgewing Nr. R 114 van 16 Februarie 2018 **verklaar dat 'n basiese assesseringsproses gevolg moet word indien 'n groot windkragaanleg binne 'n REDZ val. Daarom sal ses aansoeke om omgewingsmagtiging op grond van basiese assesserings en 'n gesamentlike openbaredeelnameproses (PPP) ingedien word.**

Indien u enige kommentaar, vrae, navrae of kommer oor die voorgestelde ontwikkeling in enige stadium van die BA-proses na vore wil bring, kontak Arcus asseblief op die volgende maniere (met vermelding van die Arcus-verwysing 2780 Highlands):

Kontak: Anja Albertyn

Pos: Kantoor 220, Cube Workspace, h/v Langstraat en Hans Strijdomweg, Kaapstad, 8001

Telefoon: +27 21 412 1529

Faks: +27 86 762 2885

E-pos: highlands@arcusconsulting.co.za



14 June 2018

Dear Interested & Affected Party,

RE: Application for Environmental Authorisation for the proposed Highlands Wind Energy Facilities and Associated Infrastructure in the Eastern Cape Province

WKN Windcurrent South Africa (Ltd) Pty is proposing the up to 150 MW Highlands Wind Energy Facilities (WEF), and associated infrastructure including grid connection infrastructure (the Proposed Development), located near the town of Somerset East in the Eastern Cape Province. The Proposed Development Site is situated within the Cookhouse Renewable Energy Development Zone (REDZ) (Figure 1). The area of interest for development within these land parcels is approximately 9000 hectares.

Arcus **Consultancy Services South Africa (Ltd) Pty ('Arcus')** has been appointed to act as the independent environmental impact assessment practitioner (EAP) to undertake the environmental impact assessment (EIA) process for Environmental Authorisation under Chapter 5 of the National Environmental Management Act, 1998 (Act 107 of 1998 – NEMA) as amended, for the Proposed Development.

You are receiving this initial notification because you were identified as an Interested & Affected Party (I&AP). Public Participation is an important part of the environmental authorisation process. It offers I&APs the opportunity to obtain information, comment, raise issues of concern and collaborate in the authorization process. Comments, suggestions and inputs from the public, along with specialists assessments of the various environmental impacts of the project will assist the Department of Environmental Affairs (DEA) in their decision making process.

For the purpose of obtaining Environmental Authorisation, and bidding requirements in the **Department of Energy's Renewable Energy Independent Power Producers** Procurement Programme (REIPPPP), the project has been split into three phases: North, Central and South. A Special Purpose Vehicle (SPV) has been set up for each of the three phases. Each phase will consist of two applications: one for the wind energy facility and one for the respective grid connection. The proposed Development therefore consists of six components.

- Highlands North Wind Energy Facility (RF) (PTY) Ltd:
 - Highlands North WEF Phase 1 consisting of up to 17 turbines with a generating capacity of up to 5 MW each,
 - Electrical Grid Connection and Associated Infrastructure for Highlands North WEF Phase 1;
- Highlands Central Wind Energy Facility (RF) (PTY) Ltd:
 - Highlands Central WEF Phase 2: up to 14 turbines with a generating capacity of up to 5 MW each
 - Electrical Grid Connection and Associated Infrastructure for Highlands Central WEF Phase 2;
- Highlands South Wind Energy Facility (RF) (PTY) Ltd:
 - Highlands South WEF Phase 3: up to 18 turbines with a generating capacity of up to 5 MW each;
 - Electrical Grid Connection and Associated Infrastructure for Highlands South WEF Phase 3.

The location of the six components within the Proposed Development Site are presented in Figure 2. The footprint of the combined six development components will only occupy a small portion (approximately 2%) of the land within this boundary, and fall entirely within the REDZ. New regulations in Government Notice No R 114 of 16 February 2018 state that if a large scale wind energy facility falls within a REDZ a basic assessment process is to be followed. Therefore six basic assessment applications for environmental authorisations will be submitted with a combined Public Participation Process (PPP).

Should you have any comments, questions, queries or concerns about the proposed development at any stage of the BA process, please contact Arcus through the following ways (quoting Arcus Reference 2780 Highlands):

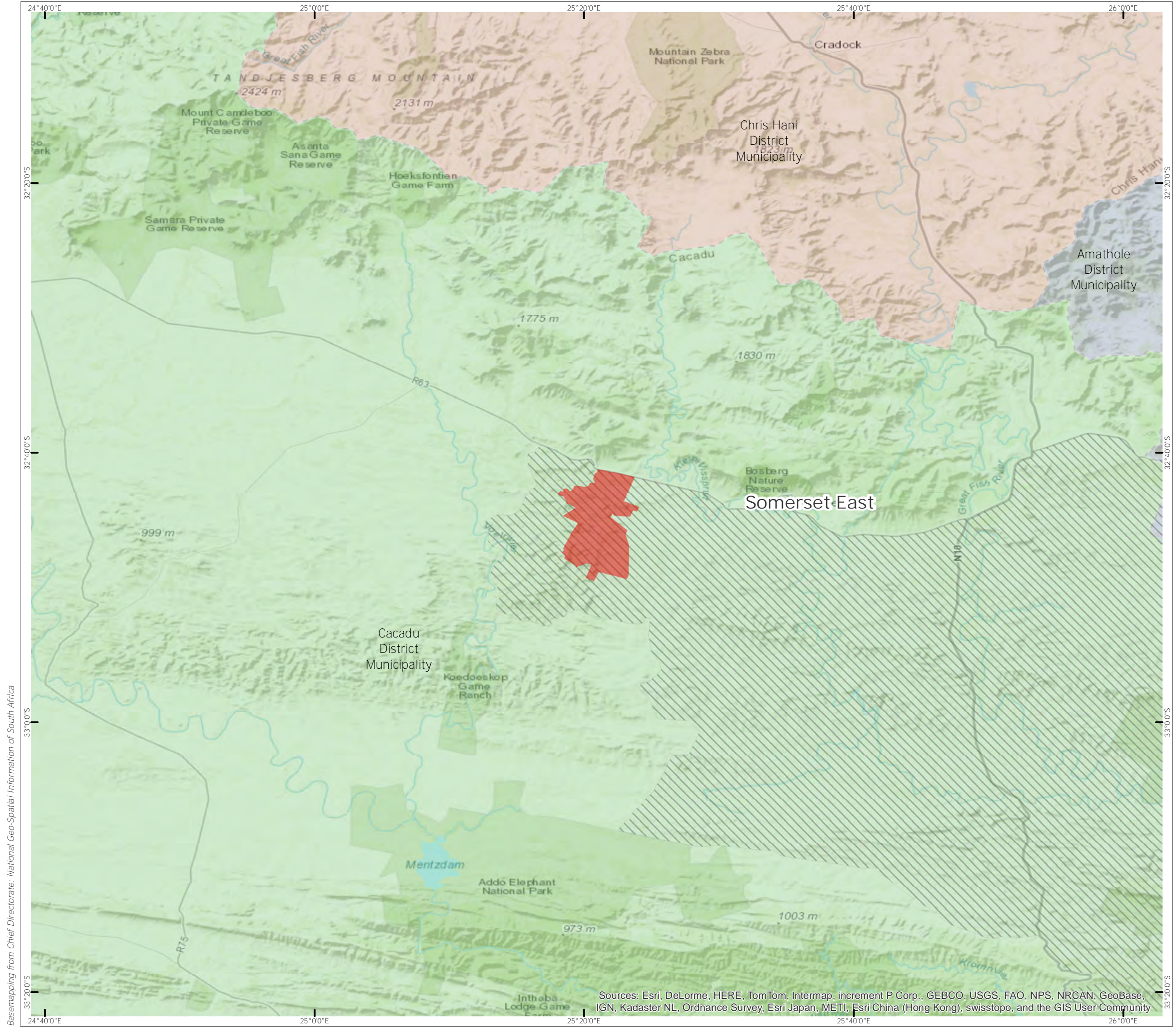
Contact: Anja Albertyn

Post: Office 220 Cube Workspace, Cnr Long Street and Hans Strijdom Road, Cape Town, 8001

Telephone: +27 21 412 1529

Fax: +27 86 762 2885

Email: highlands@arcusconsulting.co.za



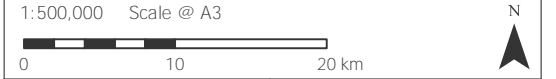
Basemapping from Chief Directorate: National Geo-Spatial Information of South Africa



- Proposed Development Area
- Renewable Energy Development Zone
- Amathole District Municipality
- Cacadu District Municipality
- Chris Hani District Municipality

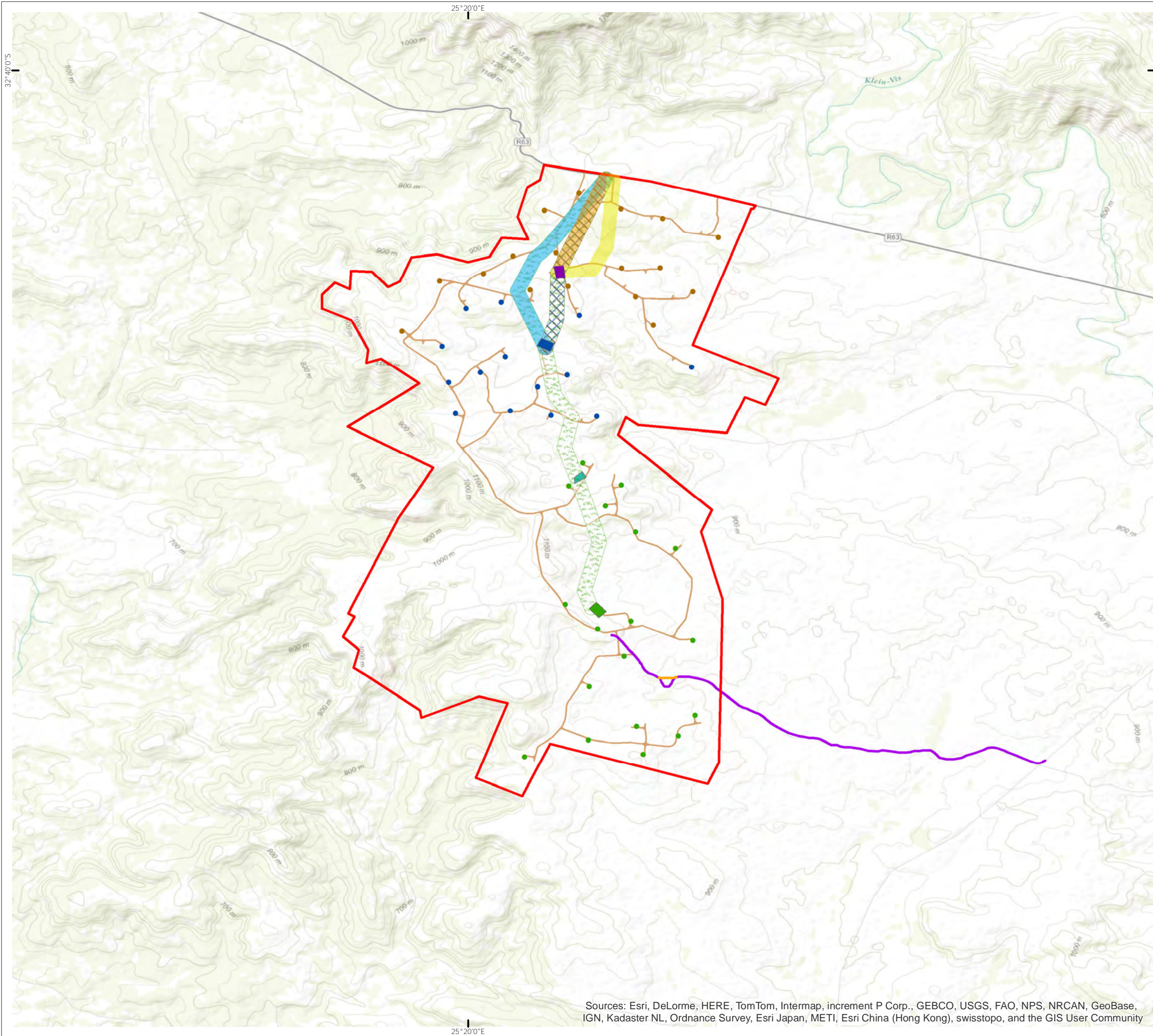


Sources: Esri, DeLorme, HERE, TomTom, Intermap, increment P Corp., GEBCO, USGS, FAO, NPS, NRCAN, GeoBase, IGN, Kadaster NL, Ordnance Survey, Esri Japan, METI, Esri China (Hong Kong), swisstopo, and the GIS User Community



Produced: AA	Ref: 2780/PUB/001
Reviewed: SC	Date: 14/06/2018
Approved: AB	

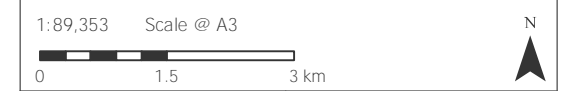
Site Location
Figure 1



Sources: Esri, DeLorme, HERE, TomTom, Intermap, increment P Corp., GEBCO, USGS, FAO, NPS, NRCAN, GeoBase, IGN, Kadaster NL, Ordnance Survey, Esri Japan, METI, Esri China (Hong Kong), swisstopo, and the GIS User Community



- Proposed Development Area
- North WEF Proposed Turbine Position
- Substation A
- North WEF Grid Alternative 1
- North WEF Grid Alternative 2
- Central WEF Proposed Turbine Position
- Substation B
- Central WEF Grid Alternative 1
- Central WEF Grid Alternative 2
- South WEF Proposed Turbine Position
- Access Road to be Upgraded - Tight Bend Shortcut
- Existing Access Road requiring Upgrade
- Substation C2
- Substation C1
- South WEF Grid Alternatives



Produced: AA	Ref: 2780/PUB/001
Reviewed: SC	Date: 14/06/2018
Approved: AB	

The Proposed Highlands Wind Energy Facilities
Figure 2

Highlands Wind Farms
Initial Notification Letter