



Amafa aKwazulu-Natali
195 Jabu Ndlovu Street Pietermaritzburg 3200
Telephone 033 3946 543
bernadetp@amafapmb.co.za

03 June 2014

Attention Bernadet Pawandiwa

Dear Ms Pawandiwa

Application for Exemption from a Phase 1 Heritage Impact Assessment for the proposed upgrading of the Hillview sewer rising main and southern outfall bulk sewer pipeline in Empangeni, Mhlathuze Municipality, KwaZulu-Natal, South Africa

Project description

The City of uMhlathuze Local Municipality's proposed Southern Outfall Sewer Upgrade in Empangeni is necessary due to the frequent localized over flow problems as a result of the existing pipelines being too old and under sized to cope with current and future flows. The upgrade will, entail the installation of an entirely new rising main which will flow from the Hillview Pumping Station for approximately 1.5 km into an existing discharge chamber, and a new gravity main sewer pipeline, which will run from the discharge chamber for approximately 5.3 km and into the Empangeni Waste Water Treatment Works

The new 450 mm diameter sewer rising main alignment will run largely within the servitude of the existing pipeline, from the existing Hillview Sewer Pump Station for approximately 1.5 km to an existing discharge chamber. The 700 mm diameter, gravity outfall foul sewer, will also fall largely within an existing servitude and will run from the discharge chamber around the west of Empangeni for approximately 5.3 km and discharge into the existing Empangeni Wastewater Treatment Works, south of Empangeni.

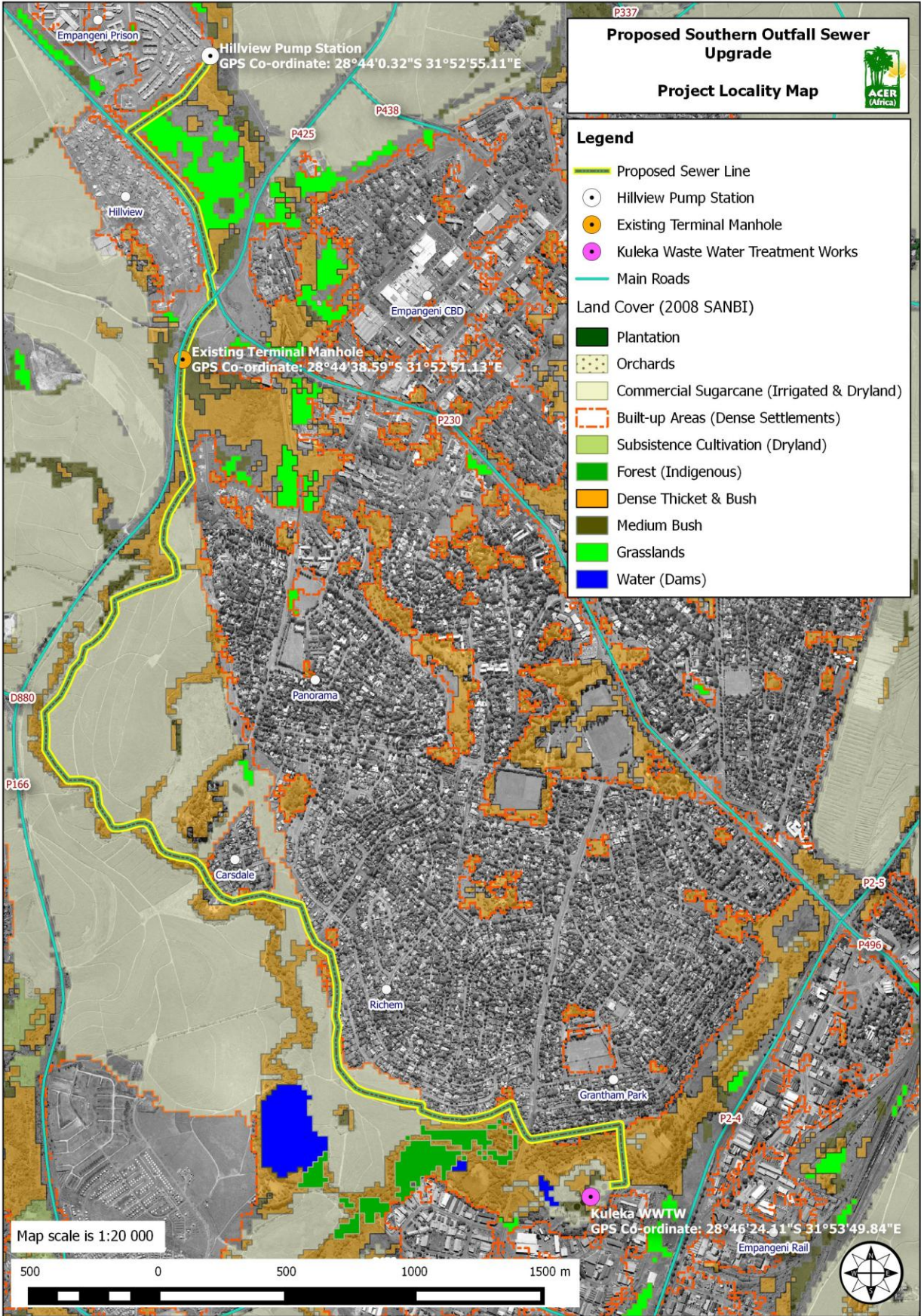
Site assessment and recommendations

Given the nature of the project as an upgrade within existing servitudes, the disturbed nature of both the urban and peri-urban environments including a long history of sugar cane cultivation, we believe that a Phase 1 HIA for this project is not justified. Accordingly, on behalf of the client, City of uMhlathuze Local Municipality, we are applying for exemption from an HIA for the project.

Please could you convey Amafa's decision on this matter to the appointed Environmental Practitioner, Mr Keagan Kruger, of **ACER (Africa) Environmental Management Consultants**.
Keagan.kruger@acerafrica.co.za

Yours sincerely

Len van Schalkwyk and Elizabeth Wahl

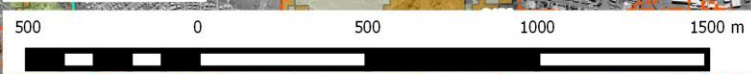


Proposed Southern Outfall Sewer Upgrade
Project Locality Map



- Legend**
- Proposed Sewer Line
 - Hillview Pump Station
 - Existing Terminal Manhole
 - Kuleka Waste Water Treatment Works
 - Main Roads
- Land Cover (2008 SANBI)**
- Plantation
 - Orchards
 - Commercial Sugarcane (Irrigated & Dryland)
 - Built-up Areas (Dense Settlements)
 - Subsistence Cultivation (Dryland)
 - Forest (Indigenous)
 - Dense Thicket & Bush
 - Medium Bush
 - Grasslands
 - Water (Dams)

Map scale is 1:20 000



Kuleka WWTW
 GPS Co-ordinate: 28°46'24.11\"/>

Existing Terminal Manhole
 GPS Co-ordinate: 28°44'38.59\"/>

Hillview Pump Station
 GPS Co-ordinate: 28°44'0.32\"/>