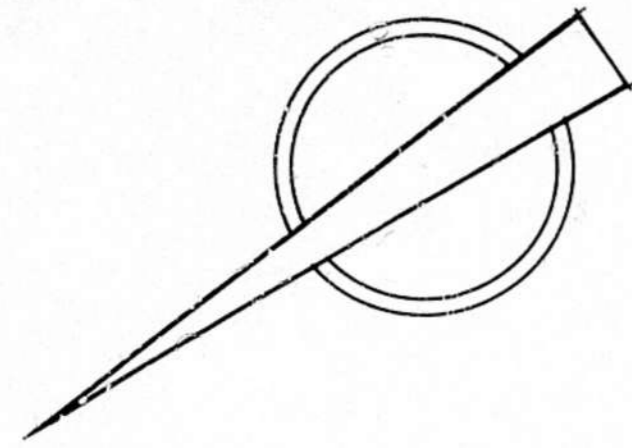


TOWN PLANNING SECTION  
 APPROVED  
 DATE 17 SEP 1974  
 SIGNATURE *[Signature]*

45 LAWLEY ST  
 1700 11 Ave 74  
 15/10/74

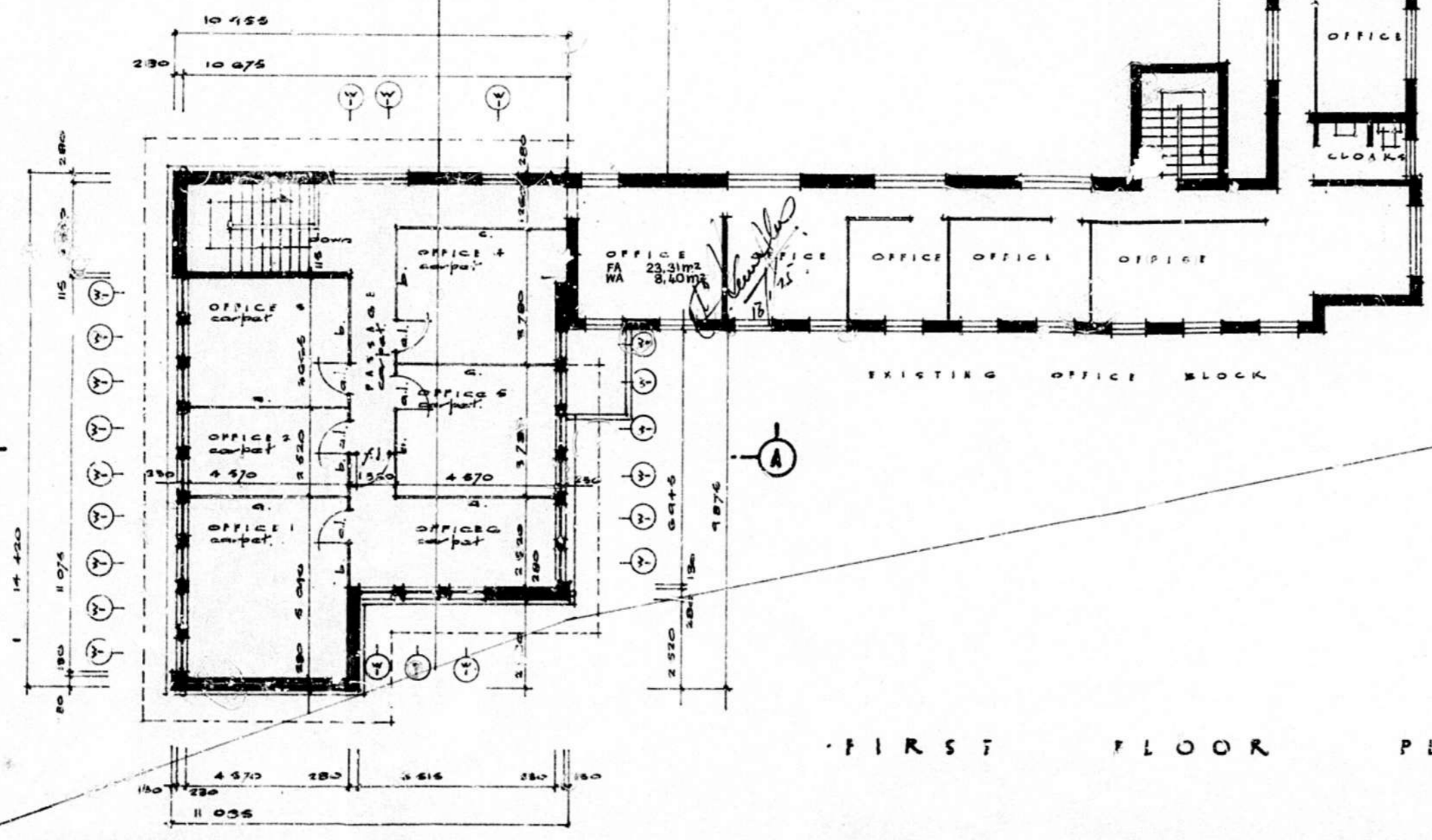
**ORIGINAL**



LOT 10

LOT 11

LOT 12



- PARTITION LEGEND**
- a. solid full height
  - b. 2134 solid, fixed glazed over
  - c. 1870 x 760 "
  - d. adjustable louvre skylight
  - f. fixed louvre skylight
- OFFICE LIGHTING**  
 400 lux with a minimum plane  
 width of 1.9.
- | Area     | Area                | Light | Light |
|----------|---------------------|-------|-------|
| Office 1 | 28.08m <sup>2</sup> | 0.40  | 10%   |
| Office 2 | 11.51m <sup>2</sup> | 2.00  | 24%   |
| Office 3 | 16.75m <sup>2</sup> | 4.20  | 25%   |
| Office 4 | 16.75m <sup>2</sup> | 2.50  | 15%   |
| Office 5 | 16.75m <sup>2</sup> | 4.20  | 25%   |
| Office 6 | 12.10m <sup>2</sup> | 7.00  | 58%   |

FIRST FLOOR PLAN additional area = 144.074m<sup>2</sup>

THIS PRINT FOR: \_\_\_\_\_ DATE: \_\_\_\_\_ BY: \_\_\_\_\_

REVISIONS TO OFFICE  
 JAMES G. JACOBS FOR  
 TRINK SERVICE GROUP

WORKING DRAWING

DRAWING NO.  
 75-17-4

SCALE: 1:1000  
 DATE: 17 SEP 1974  
 DRAWN BY: *[Signature]*

GOURLAY, HARRIS, FELS AND PARTNERS  
 ARCHITECTS AND TOWN PLANNERS  
 81 HIGHWAY HOUSE,  
 DURBAN. TELEPHONE 380061