



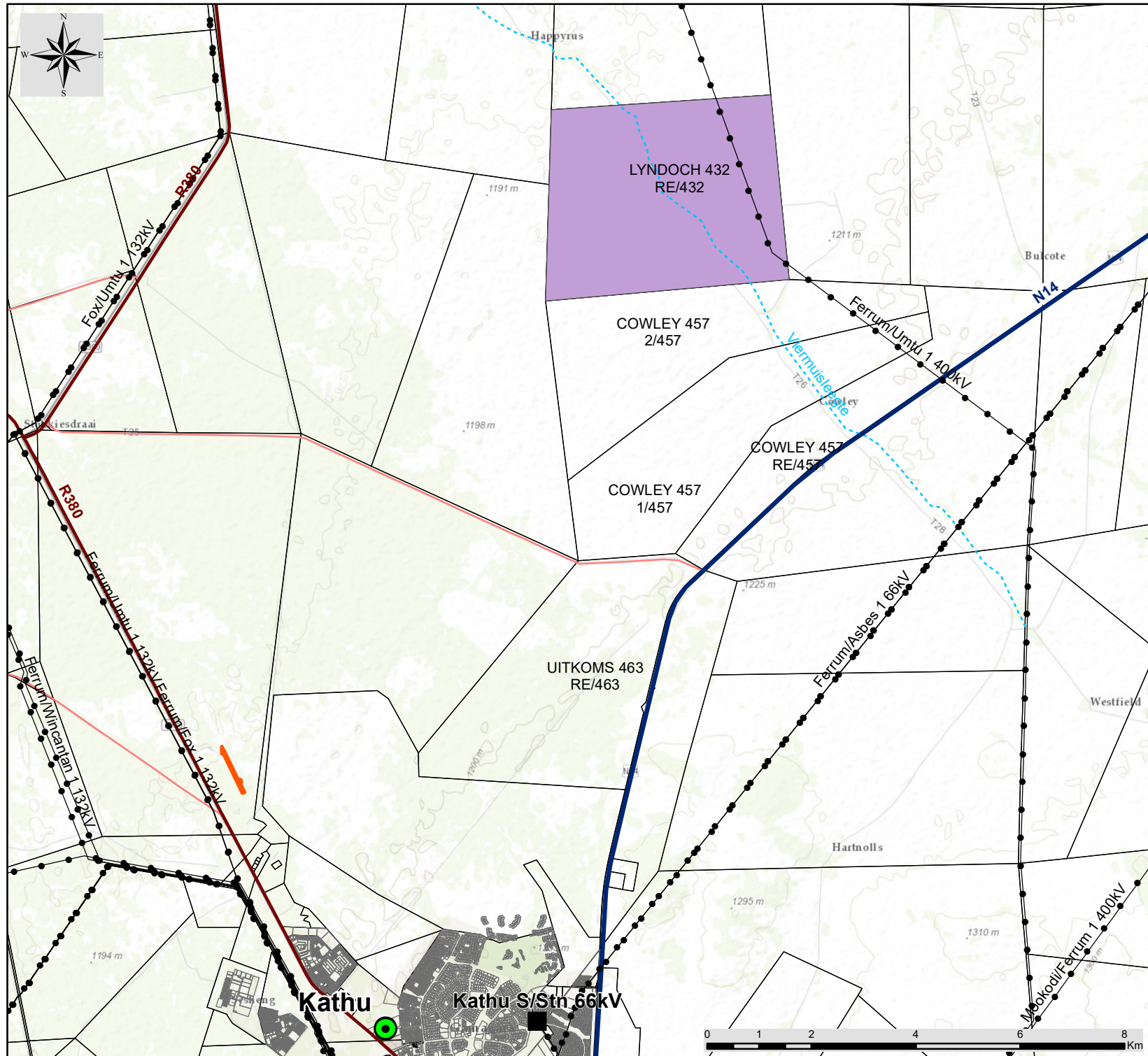
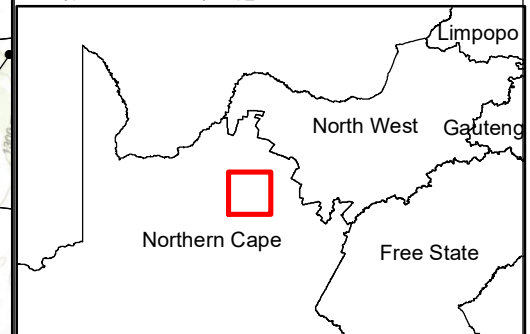
# Hyperion Solar Development 2, Northern Cape

Locality Map

## Legend

- Town
- Eskom Substation
- Existing Power Line
- National Route
- Regional Road
- Main Road
- Non-perennial River
- Sishen Airport
- Project Site
- Farm Portion

Scale: 1:101 296  
Projection: LO23  
Ref: Hyperion PV1 Locality Map\_02.08.18



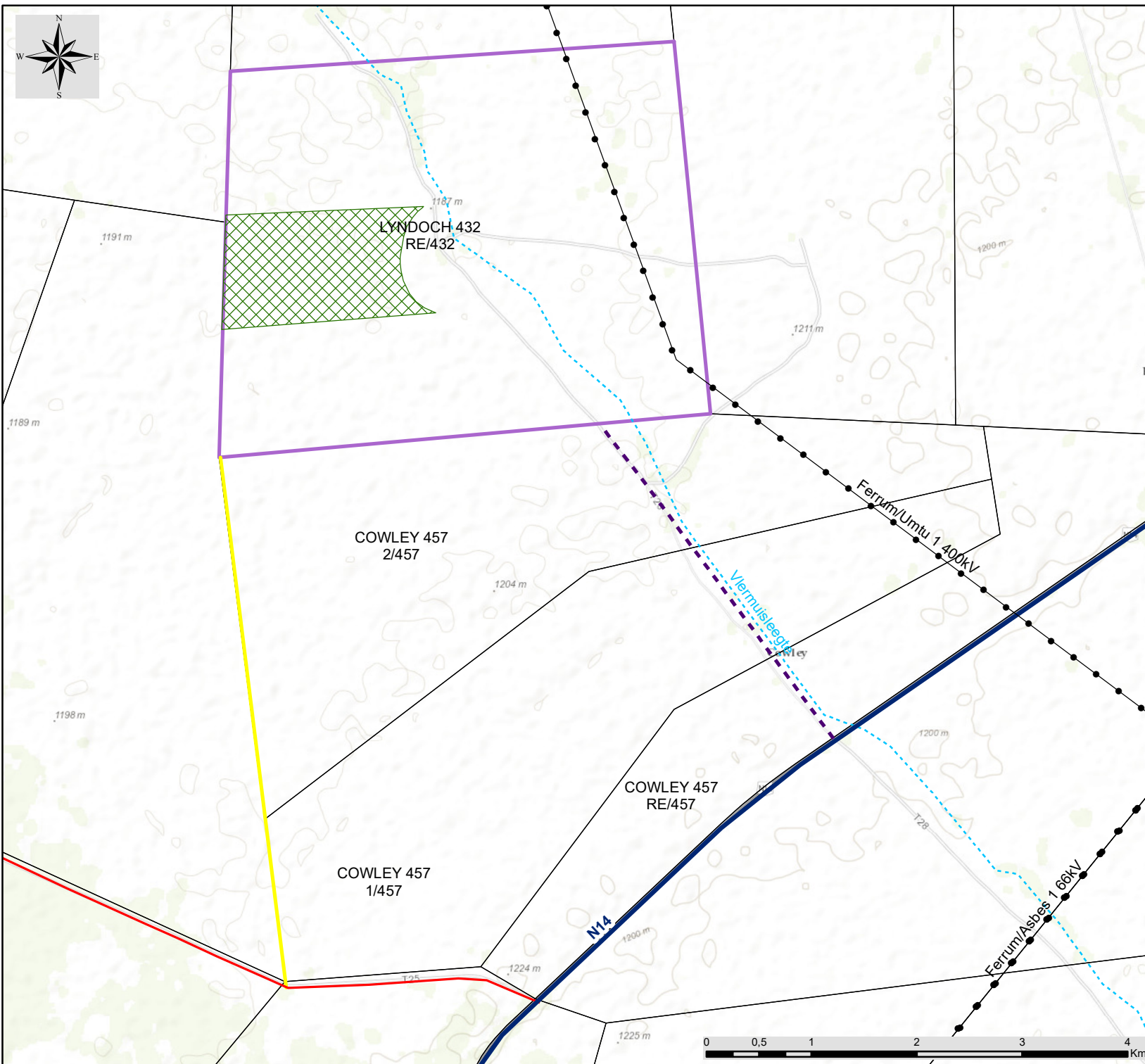


# Hyperion Solar Development 2, Northern Cape

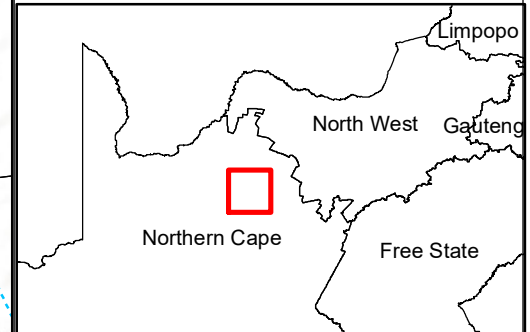
## Development Area Map

### Legend

- Existing Power Line
- National Route
- Main Road
- - - Non-perennial River
- - - Access Road Alternative 1
- Access Road Alternative 2
- ▨ Development Area
- ▭ Project Site
- ▭ Farm Portion



Scale: 1:50 496  
Projection: LO23  
Ref: Hyperion PV1 DA Map\_20.08.18





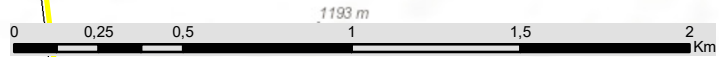
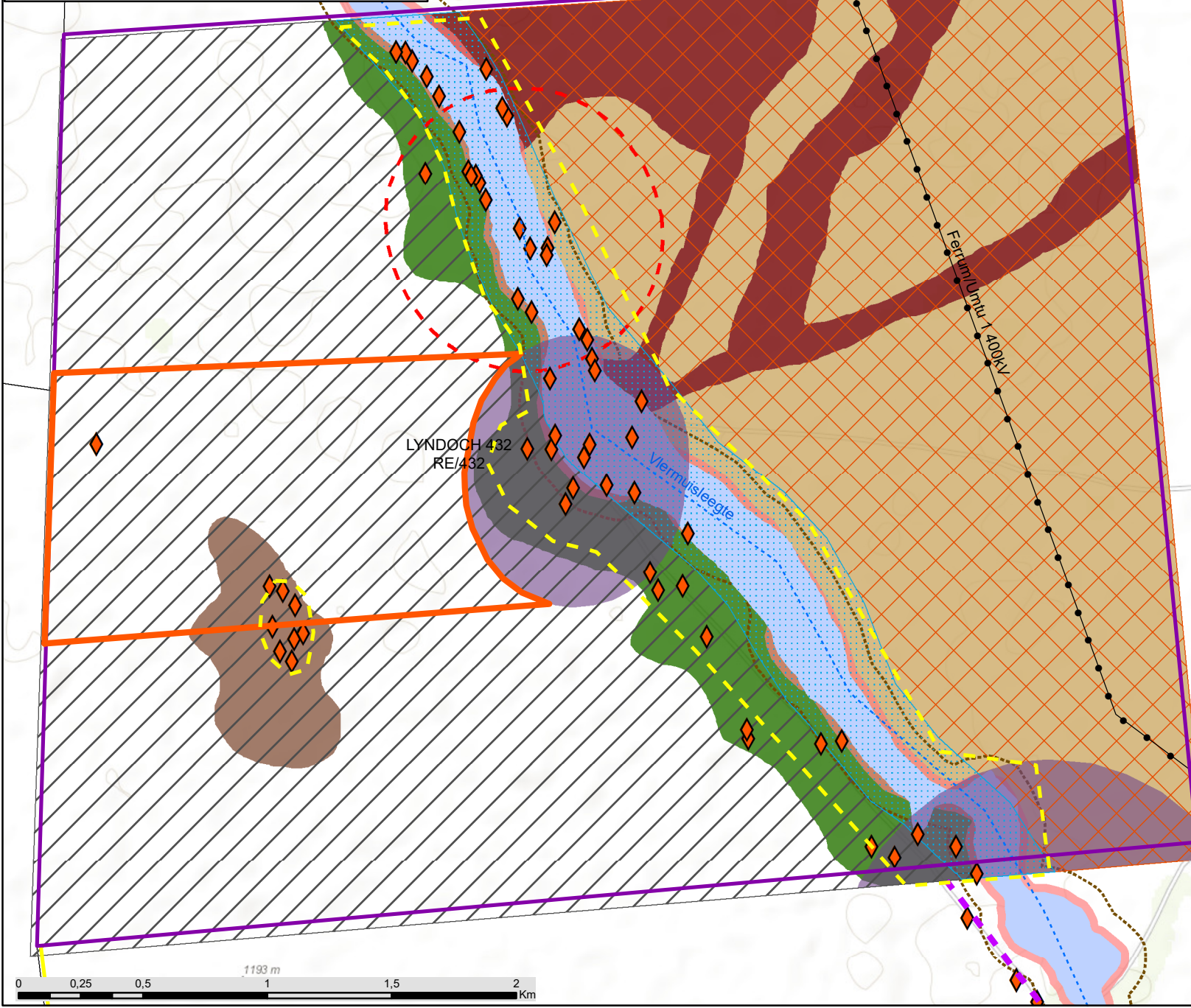
# Hyperion Solar Development 2 near Kathu, Northern Cape

## Environmental Sensitivity Map

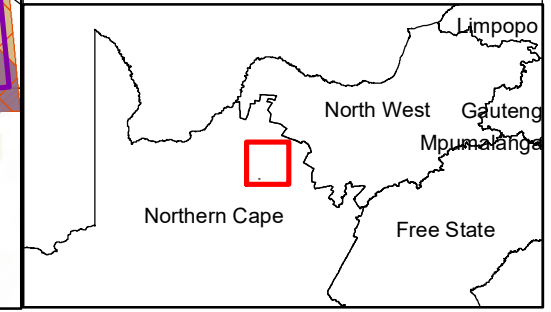


### Legend

- Existing Power Line
  - Non-perennial River
  - Access Road Alternative 1
  - Access Road Alternative 2
  - Development Area
  - Project Site
  - Farm Portion
- Environmental Sensitivities:**
- Heritage Site
  - 500m Homestead Buffer (Visual Sensitivity)
  - Kathu Bushveld (Medium Ecological Sensitivity)
  - Gravel Hill (Medium Ecological Sensitivity)
  - River Buffer (Medium Ecological Sensitivity)
  - 500m Depression Wetland Buffer (Medium Watercourse Sensitivity)
  - 100m Vlermuisleegte Buffer (Medium Watercourse Sensitivity)
  - Tarchonanthus Scrub (Medium Avifauna Sensitivity)
  - High Acacia Erioloba Density (High Ecological Sensitivity)
  - Acacia Erioloba Woodland (High Avifauna Sensitivity)
  - 32m Vlermuisleegte and Depression Wetland Buffer (High Watercourse Sensitivity)
  - Depression Wetland (Very High Watercourse Sensitivity)
  - Vlermuisleegte River (Very High Ecological and Watercourse Sensitivity)
  - Vlermuisleegte River (Very High Avifauna Sensitivity)
  - High Heritage Indicators (Very High Heritage Sensitivity)



savannah environmental  
 Scale: 1:22 409  
 Projection: LO23  
 Ref: Hyperion PV2 Sensitivity Map\_02.10.18

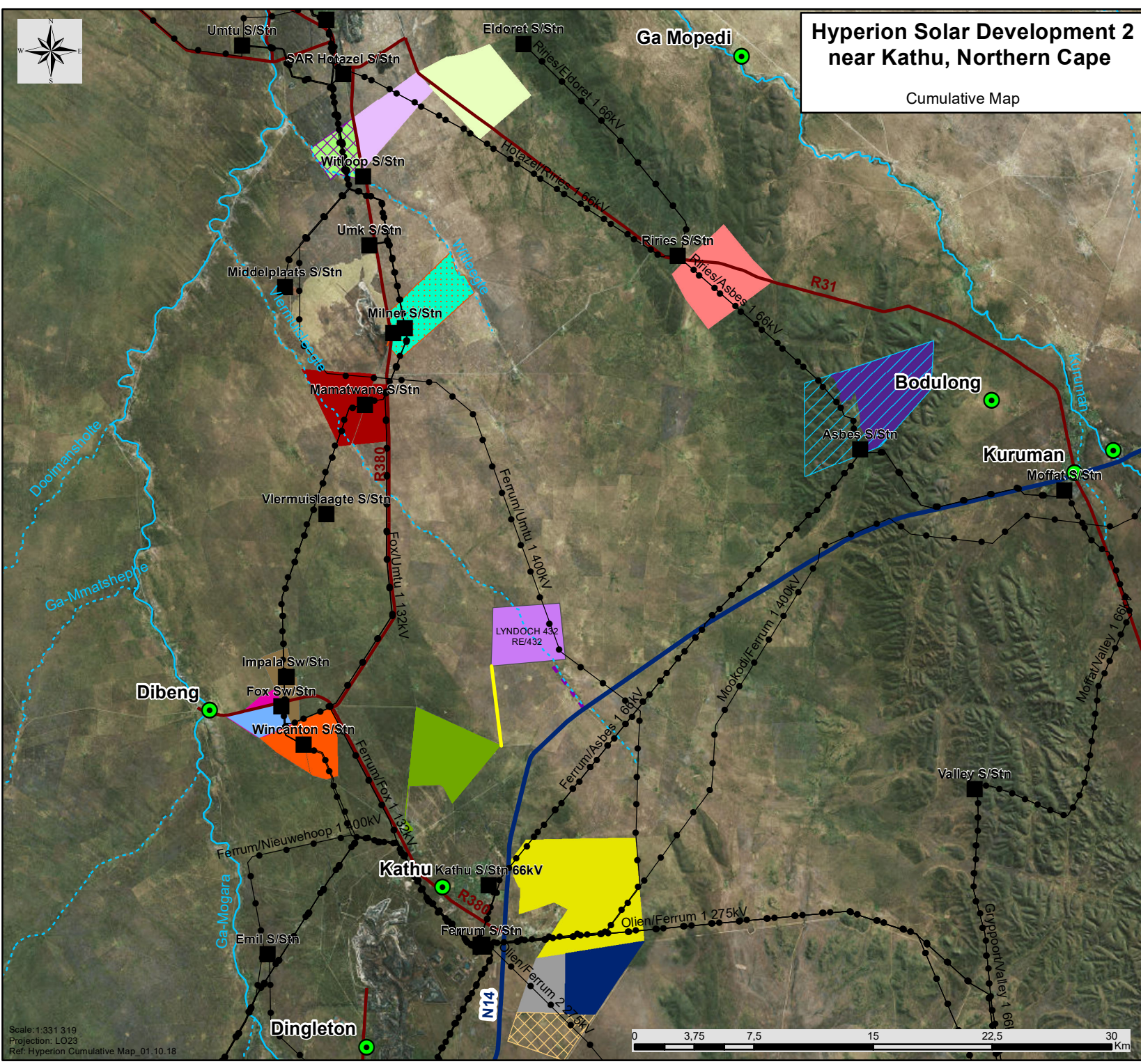






# Hyperion Solar Development 2 near Kathu, Northern Cape

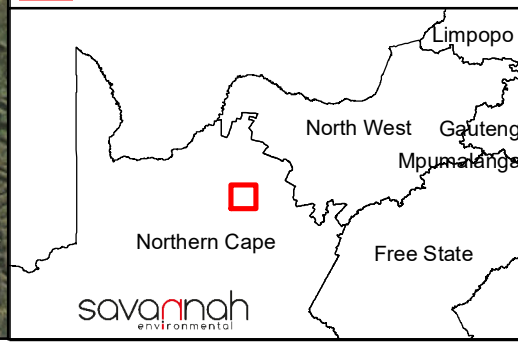
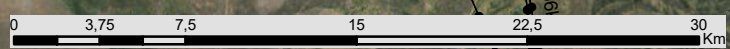
Cumulative Map



- ### Legend
- Town
  - Eskom Substation
  - Existing Power Line
  - National Route
  - Regional Road
  - Perennial River
  - Non-perennial River
  - Access Road Alternative 1
  - Access Road Alternative 2
  - Project Site

- ### Other known solar energy facilities:
- (illustration based on affected properties and not project site)
- Kathu Solar Energy Facility (2 x PV) (1 x PB)
  - Sishen Solar Energy Facility (PB)
  - Kalahari Solar Power Project (3 x CSP) (1 x PB)
  - San Solar Energy Facility
  - Kagiso Solar Power Plant
  - Tshepo Solar Power Plant
  - Perth-Kuruman Solar Farm
  - Perth-Hotazel Solar Farm
  - 19MW Adams Solar Power Generation Plant
  - 75MW Adams PV Solar Energy Facility (PB)
  - Whitebank Solar Plant
  - 10 MW Roma Energy Mount Roper Solar Plant
  - Boitshoko Solar Power Plant
  - AEP Kathu Solar PV Energy Facility
  - Bestwood Solar Farm
  - Shirley Solar Park
  - AEP Legoko PV Solar Facility
  - AEP Mogobe PV Solar Energy Facility
  - 5MW Roma Energy Mount Ropers Solar Plant

Scale: 1:331 319  
 Projection: LO23  
 Ref: Hyperion Cumulative Map\_01.10.18



**Appendix M: Site Coordinates**

*Corner point coordinates (Project Site):*

<b>Coordinates</b>		
	<b>Latitude (S)</b>	<b>Longitude (E)</b>
<b>Northern-most extent</b>	27°32'12.31" S	23°06'23.35" E
<b>Eastern-most extent</b>	27°34'06.94" S	23°06'36.08" E
<b>Southern-most extent</b>	27°34'20.63" S	23°03'46.03" E
<b>Western-most extent</b>	27°32'21.53" S	23°03'49.88" E
<b>Centre Point</b>	27° 32'43.22" S	23°04'19.01" E