



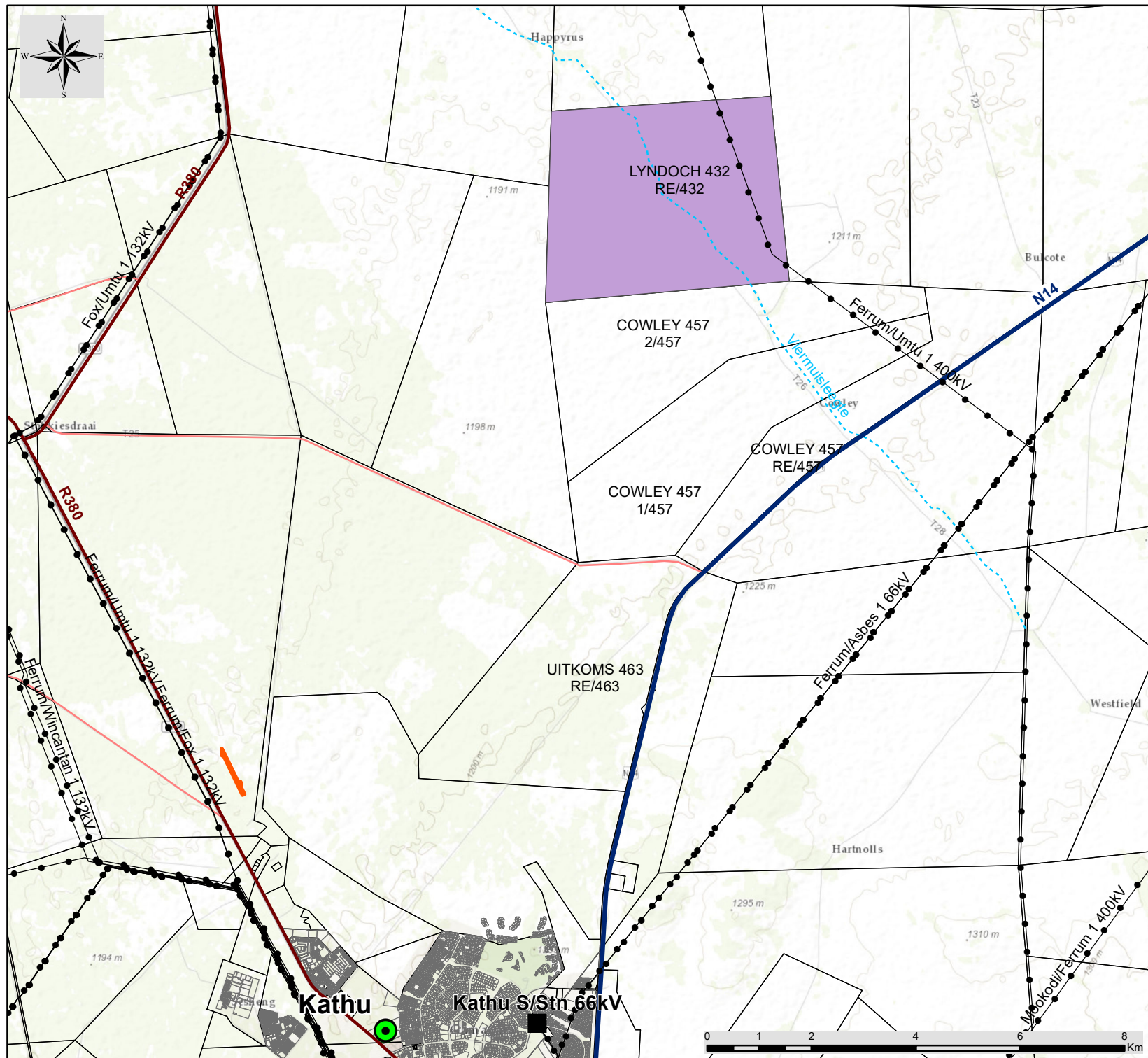
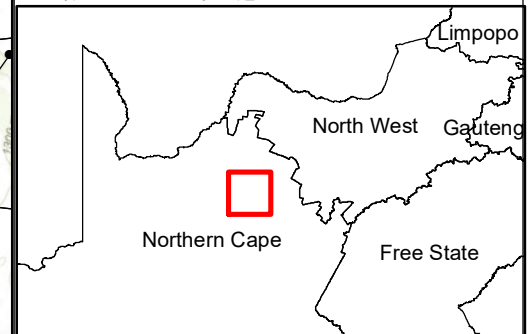
Hyperion Solar Development 2, Northern Cape

Locality Map

Legend

- Town
- Eskom Substation
- Existing Power Line
- National Route
- Regional Road
- Main Road
- Non-perennial River
- Sishen Airport
- Project Site
- Farm Portion

Scale: 1:101 296
Projection: LO23
Ref: Hyperion PV1 Locality Map_02.08.18



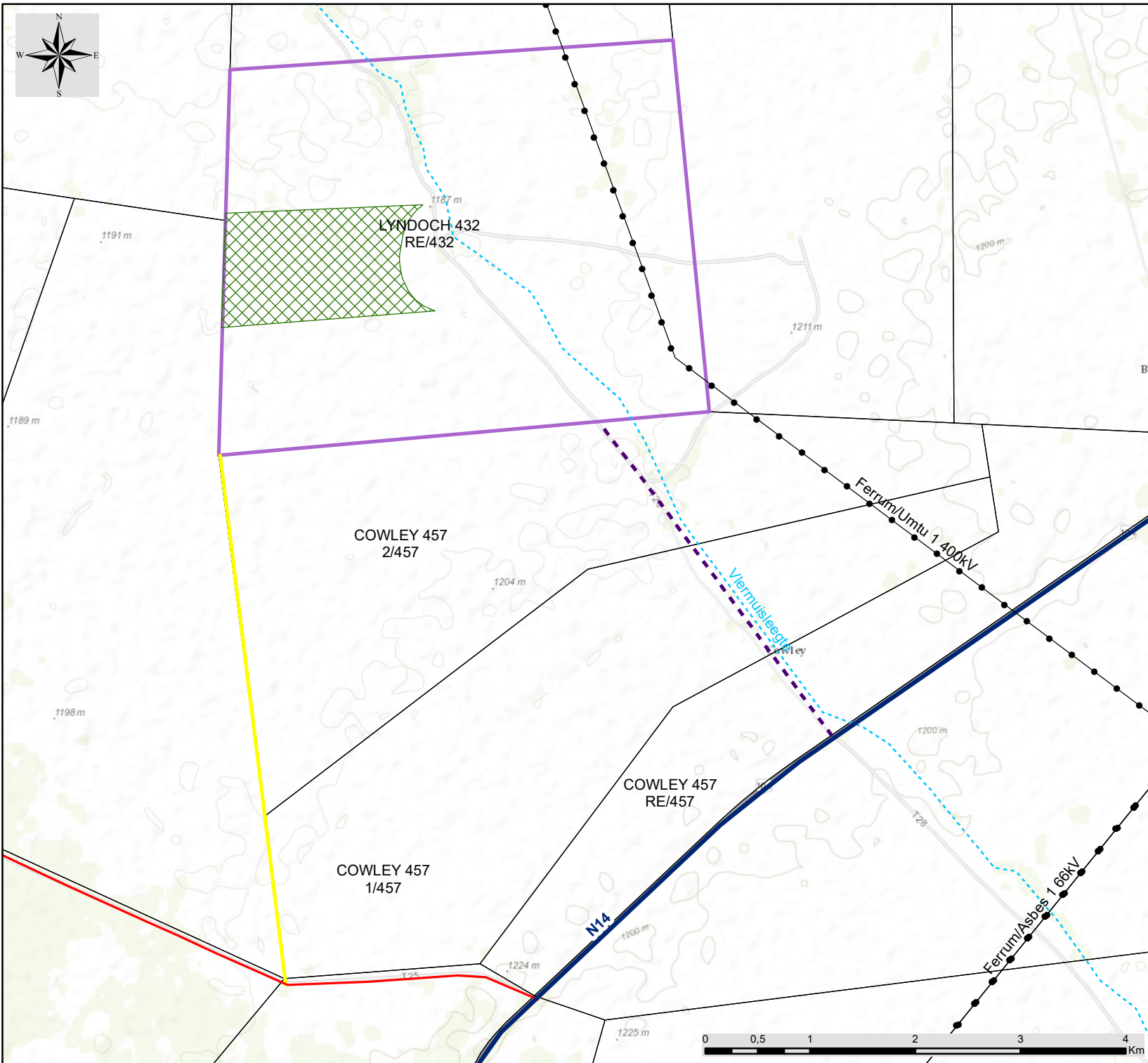


Hyperion Solar Development 2, Northern Cape

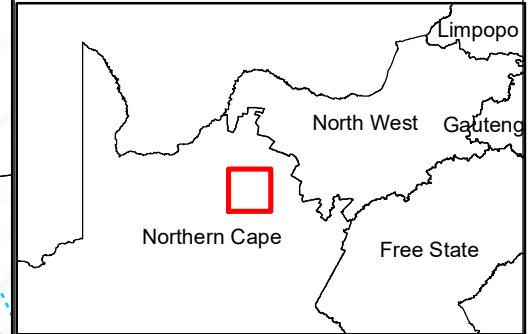
Development Area Map

Legend

- Existing Power Line
- National Route
- Main Road
- - - Non-perennial River
- - - Access Road Alternative 1
- Access Road Alternative 2
- ▨ Development Area
- ▭ Project Site
- ▭ Farm Portion



Scale: 1:50 496
Projection: LO23
Ref: Hyperion PV1 DA Map_20.08.18



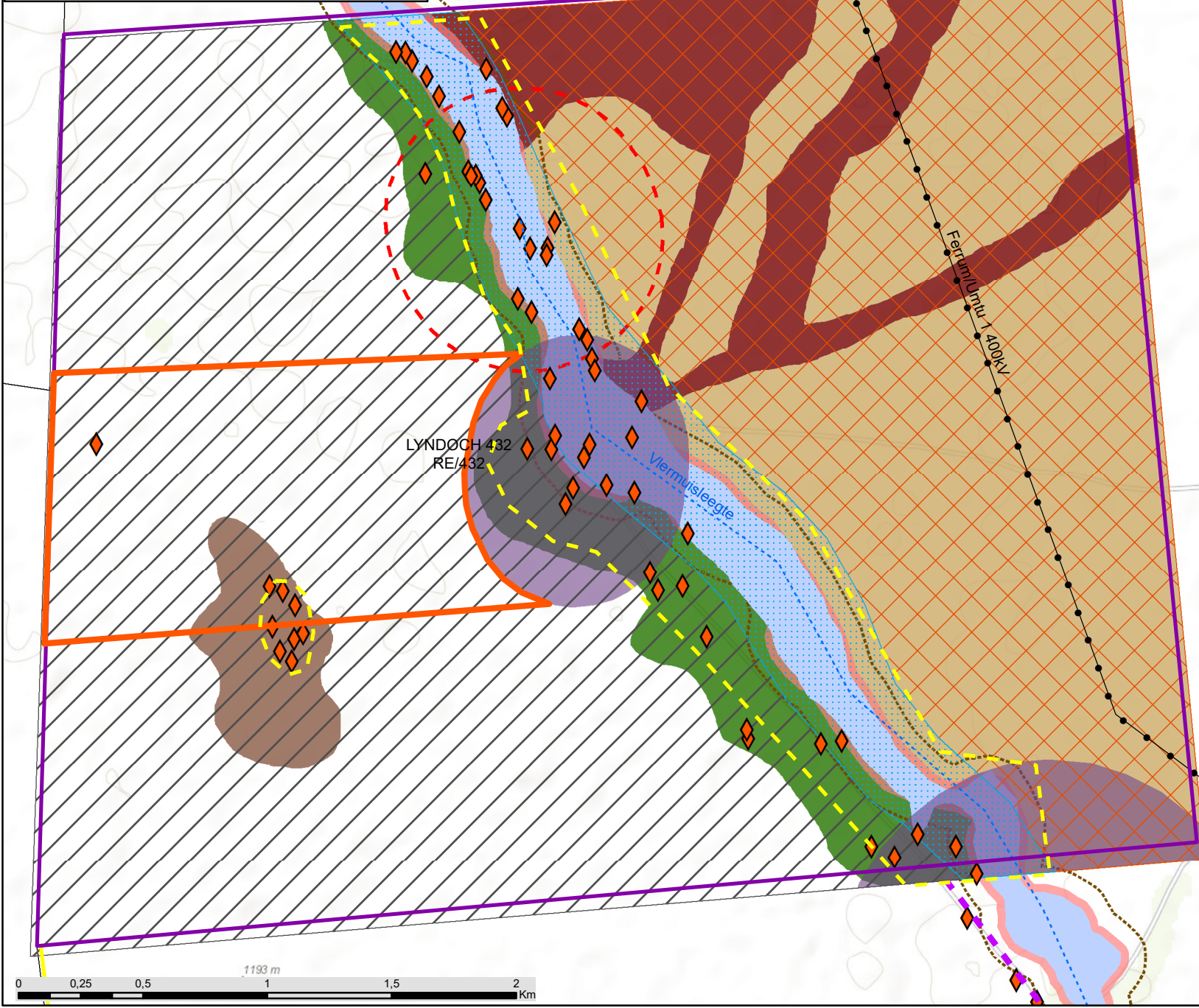
Hyperion Solar Development 2 near Kathu, Northern Cape

Environmental Sensitivity Map

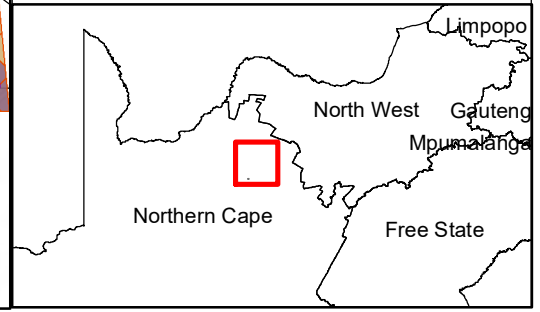


Legend

- Existing Power Line
 - Non-perennial River
 - Access Road Alternative 1
 - Access Road Alternative 2
 - Development Area
 - Project Site
 - Farm Portion
- Environmental Sensitivities:**
- Heritage Site
 - 500m Homestead Buffer (Visual Sensitivity)
 - Kathu Bushveld (Medium Ecological Sensitivity)
 - Gravel Hill (Medium Ecological Sensitivity)
 - River Buffer (Medium Ecological Sensitivity)
 - 500m Depression Wetland Buffer (Medium Watercourse Sensitivity)
 - 100m Vlermuisleegte Buffer (Medium Watercourse Sensitivity)
 - Tarchonanthus Scrub (Medium Avifauna Sensitivity)
 - High Acacia Erioloba Density (High Ecological Sensitivity)
 - Acacia Erioloba Woodland (High Avifauna Sensitivity)
 - 32m Vlermuisleegte and Depression Wetland Buffer (High Watercourse Sensitivity)
 - Depression Wetland (Very High Watercourse Sensitivity)
 - Vlermuisleegte River (Very High Ecological and Watercourse Sensitivity)
 - Vlermuisleegte River (Very High Avifauna Sensitivity)
 - High Heritage Indicators (Very High Heritage Sensitivity)



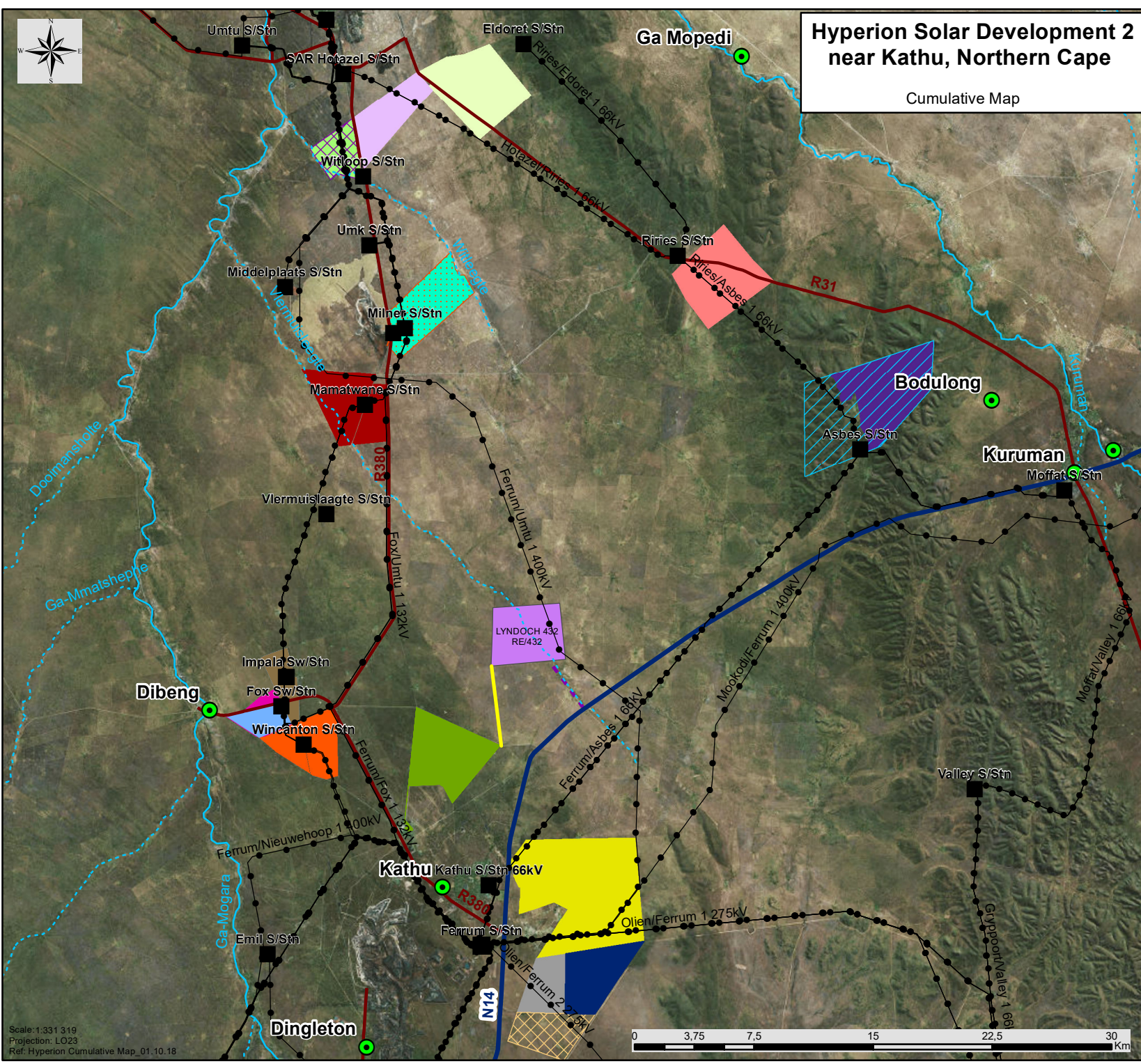
savannah environmental
 Scale: 1:22 409
 Projection: LO23
 Ref: Hyperion PV2 Sensitivity Map_02.10.18



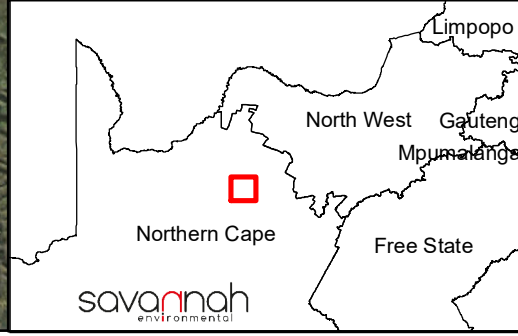


Hyperion Solar Development 2 near Kathu, Northern Cape

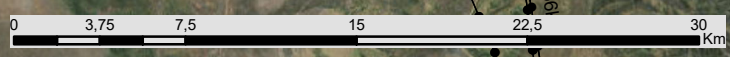
Cumulative Map



- ### Legend
- Town
 - Eskom Substation
 - Existing Power Line
 - National Route
 - Regional Road
 - Perennial River
 - Non-perennial River
 - Access Road Alternative 1
 - Access Road Alternative 2
 - Project Site
- ### Other known solar energy facilities:
- (illustration based on affected properties and not project site)
- Kathu Solar Energy Facility (2 x PV) (1 x PB)
 - Sishen Solar Energy Facility (PB)
 - Kalahari Solar Power Project (3 x CSP) (1 x PB)
 - San Solar Energy Facility
 - Kagiso Solar Power Plant
 - Tshepo Solar Power Plant
 - Perth-Kuruman Solar Farm
 - Perth-Hotazel Solar Farm
 - 19MW Adams Solar Power Generation Plant
 - 75MW Adams PV Solar Energy Facility (PB)
 - Whitebank Solar Plant
 - 10 MW Roma Energy Mount Roper Solar Plant
 - Boitshoko Solar Power Plant
 - AEP Kathu Solar PV Energy Facility
 - Bestwood Solar Farm
 - Shirley Solar Park
 - AEP Legoko PV Solar Facility
 - AEP Mogobe PV Solar Energy Facility
 - 5MW Roma Energy Mount Ropers Solar Plant



Scale: 1:331 319
 Projection: LO23
 Ref: Hyperion Cumulative Map_01.10.18



Appendix M: Site Coordinates

Corner point coordinates (Project Site):

Coordinates		
	Latitude (S)	Longitude (E)
Northern-most extent	27°32'12.31" S	23°06'23.35" E
Eastern-most extent	27°34'06.94" S	23°06'36.08" E
Southern-most extent	27°34'20.63" S	23°03'46.03" E
Western-most extent	27°32'21.53" S	23°03'49.88" E
Centre Point	27° 32'43.22" S	23°04'19.01" E

Access Road Alternative 1 coordinates:

Coordinates		
	Latitude (S)	Longitude (E)
Start	27°34'12.03" S	23°05'59.37" E
Middle	27°34'59.94" S	23°06'39.67" E
End	27°35'47.09" S	23°07'18.75" E

Access Road Alternative 2 coordinates:

Coordinates		
	Latitude (S)	Longitude (E)
Start	27°34'20.61" S	23°03'46.52" E
Middle	27°35'44.69" S	23°03'58.32" E
End	27°37'03.98" S	23°04'09.44" E