



COMPANY PROFILE



10 YEARS OF
SUSTAINABLE
GROWTH
2015

Environmental Consultants
Environmental Auditors
Aquatic & Wetland Specialists
Ecological Specialists
Air Quality Specialists
License Application Facilitators
Mining Consultants
Environmental Legislation Consultants

Company Overview

Prism Environmental Management Services is a multi-disciplinary Environmental Management consulting firm. With a vision encompassing a holistic understanding of integrated environmental management in partnership with sustainability, the company prides itself on excellent service and value-added solutions to a range of clients. Established in 2005, the company has grown from strength to strength, expanding to two offices with a team of professionals with a diverse range of specialities. Prism EMS is proud to be a Level 2 B-BBEE contributor.

With exceptional field-expertise, command and execution of the relevant legislative requirements and report quality, the company is recognised by clients, fellow consultants, and various Local and Provincial Authorities as a prominent service provider in our field of consulting.

Our Vision, Mission and Commitment

OUR VISION

Sustainability through Environmental Management Excellence.

OUR MISSION

Prism Environmental Management Services is a specialist environmental services provider, assuring excellence in environmental resource assessment and management. We stand in partnership with our clients, our employees, the community and the environment. Our ambition is to conserve resources, preserve natural habitats and prevent significant environmental impacts, by means of sustainable utilisation of our precious natural resources.

OUR COMMITMENT

The management and staff of Prism Environmental Management Services are committed to:

- Continued improvement of our customer relationships, ensuring customer satisfaction and superior service levels
- Providing professional and purposeful services at all times
- Following appropriate procedures to ensure the correct management and ongoing building of a sustainable environment
- Ongoing development of our staff to meet the challenges of our market
- Utilising experienced, well trained and technically competent staff
- To be dynamic in all dealings with our customers, colleagues and the environment
- Providing multi-faceted services to our clients through our variety of specialist disciplines; and
 - Embracing honesty, trust, teamwork, diversity and relationships that are beneficial to all involved.

**PRISM EMS IS A LEVEL 2 B-BBEE CONTRIBUTOR
(VERIFICATION AVAILABLE ON REQUEST)**

Experience

The team at Prism EMS has extensive experience in Integrated Environmental Management (IEM) having completed numerous Basic Assessment Reports, Environmental Scoping Reports, Environmental Impact Assessments (EIA's) and Environmental Management Plans (EMP's) in terms of the National Environmental Management Act, 1998 and the National Environmental Management: Waste Act, 2008 as well as a wide range of specialist studies for a range of authorisation applications. Prism EMS is also involved in assisting various town planners and prominent developers with EIA applications, EMP's, Open Space Management Plans, Riverine- and Wetland Assessments and Delineations, Riverine and Wetland Management Plans, Ecological Studies, Air Quality Impact Assessments and other specialist studies. The consultancy also facilitates Water Use License Applications (WULAs).



With global emphasis placed on aquatic resources and the conservation thereof, it is important to know that Prism EMS are specialists in the field of assessment, delineation, management and conservation of aquatic resources. Our highly qualified team has extensive knowledge of aquatic fauna and flora and have completed numerous wetland- and riverine assessments, and delineations. Members of our team are acknowledged as leaders in the field of wetland assessment and delineation by peers and authorities alike. Both Prism EMS as a company, and De Wet Botha personally, are registered members of the SA Wetland Society.

Auditing and on-site monitoring also form part of the range of services the consultancy offers – be it environmental control officers (ECOs) during the construction phase of developments, environmental monitors (EMs) for the project engineering team on sites, or environmental officers (EOs) for contractors. The common goal aimed at, and achieved within these roles, is overseeing, implementation and compliance with the Environmental Authorisation (EA) and EMP.

Consultants in our team have in-depth experience in the environmental component of the mining industry, regulated by the Mineral and Petroleum Resources Development Act, 2002 and with strong emphasis on the National Water Act, 1998, and National Environmental Management Act, 1998. Services offered to the mining industry include, but are not limited to, Closure Plans, Rehabilitation Fund Calculation, Basic Assessments, Environmental Impact Assessments, Environmental Management Plans, Environmental Management Implementation, Performance Assessments, Water Use License Applications, Bio-diversity Assessments and various Specialist Assessments are offered as part of EMP amendments and new mining activities.

Prism EMS has also expanded its services to encompass the Air Quality field. The consultancy and its associates are able to conduct Air Quality Impact Studies, Air Emissions modelling and also facilitate Air Emissions Licensing (AEL).

To summarise, Prism EMS is an accomplished consultancy, confident that we can successfully fulfil client requirements, from project planning to completion. The multi-faceted character of the company is evident from the range of disciplines abridged below.



Scope of Services

ENVIRONMENTAL IMPACT MANAGEMENT

- Environmental Impact Assessments (EIAs)
- Basic Assessment processes & Reports (BARs)
- Environmental Management Plans (EMPs)
- Site-specific EMPs
- Water Use License Applications (WULAs) & General Water Use Applications (GAs)
- Waste License Applications
- Air Emissions Licenses

ENVIRONMENTAL PLANNING

- Environmental Management Systems (conforming to ISO 14001)
- Environmental Site Selections and Planning at Pre-Feasibility Phase
- Environmental Procedures and Environmental Specifications

ENVIRONMENTAL AUDITING & MONITORING

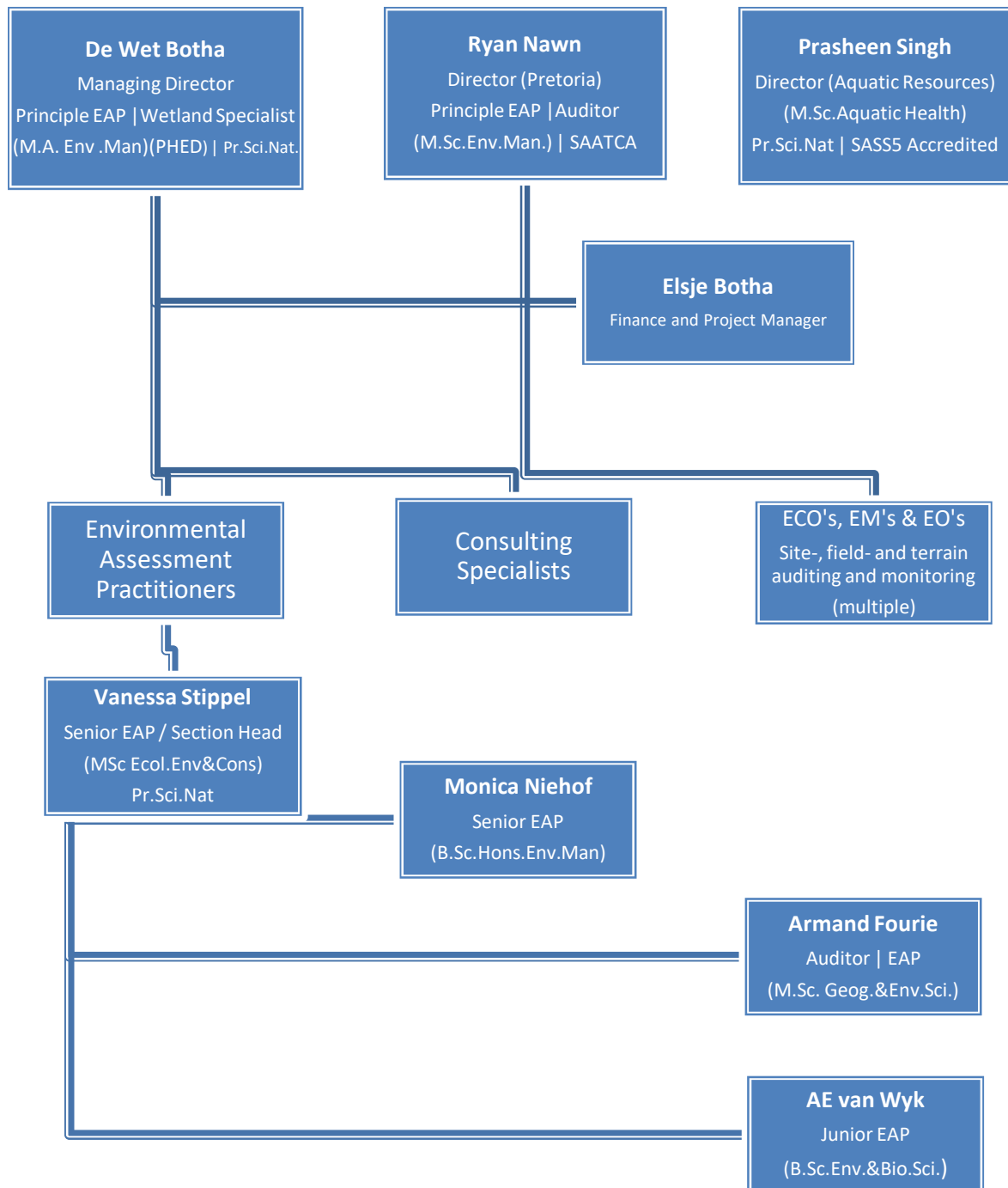
- ISO 14001 Environmental Management Systems
- Environmental Authorisations (and historical RoDs)
- Environmental Management Plans and Programmes for construction projects and mining
- Water Use Licenses
- Waste Licenses
- Green Building developments (conforming to MANUAL-6 & MANUAL-7 of the GBCSA requirements for Green Building)
- All levels of Environmental Monitoring & Control for construction projects representing Clients as:
 - Environmental Auditors
 - Environmental Officers
 - Environmental Monitors
 - Independent Environmental Control Officers (ECO)

Specialist Solutions

The list of specialist services we offer and facilitate includes, *inter alia*, the following:

- Ecological Habitat Assessments
- Aquatic Health Assessments (including SASS5)
- Wetland and Riparian Habitat assessments and delineation
- Rehabilitation plans and mitigatory strategy
- Aquatic and Ecological Monitoring Plans
- Bio-monitoring
- Biodiversity action plans
- Grassland rehabilitation
- Ridge Studies
- Air Quality Impact Assessments
- Geographic Information System (GIS) mapping
- Sensitivity mapping
- Legislation and process guidance
- Policy Development
- Open Space Management Plan (OSMP)
- Public Participation Processes
- EIA Review
- Specialist Auditing
- In terms of Mining Activities we facilitate:
 - Prospecting Right Applications
 - Prospecting Environmental Management Plans
 - Mining Right Applications
 - Closure Applications
 - Closure Cost Calculations
 - Annual Performance Audits (against relevant permits and licenses)

Company Organogram



Contact Us

Johannesburg:	Pretoria:
Tel No: 087 985 0951	Tel No: 012 342 2974
Fax No: 086 601 4800	Fax No: 086 552 1590
E-mail: prism@prismems.co.za	E-mail: prismpretoria@prismems.co.za
12A Beacon Road	89 Burns Street
Poortview AH	Colbyn
Roodepoort	Pretoria

Visit our website www.prismems.co.za

or find us on Social Media:



PRISM
ENVIRONMENTAL MANAGEMENT SERVICES

Curriculum Vitae: Mrs V Stippel

Name : **STIPPEL, VANESSA JEAN**
Date of Birth : 30 August 1984
Profession/Specialisation : Senior Environmental Consultant
Nationality : South African
Years' experience : 10

Key Experience

Vanessa Stippel has eight (8) years' working experience as a senior environmental consultant and is registered with the South African Council for Natural Scientific Professions as a Professional Natural Scientist (Pr.Sci.Nat. Reg No. 116221) in the field of Environmental Science. She also has two (2) additional years' experience in research and training. Key environmental experience includes managing large Environmental Impact Assessments (EIAs) for Strategic Infrastructure Projects including the Berth 203 to 205 Expansion EIA and the NATREF Clean Fuels II EIA as well as Resource Management Plans (RMPs) for prioritised State Dams. She is well versed in environmental legislation and has been involved in the compilation of legal registers for organisations such as the Johannesburg City Parks and Zoo. Additional experience comprises of environmental auditing for projects such as Mooi Mgeni Transfer Scheme Phase 2 and the Orange River Water Resource Development Project –Phase 2c as well as the Technical Audit of the Sasol Chemical Industries and Sasol Mining Waste Storage Facilities in Sasolburg. As an Institutional Researcher, she was responsible for the management and compilation of a number of surveys. She also has experience in training facilitation.

Key Qualifications

MASTER OF SCIENCE IN ANIMAL, PLANT AND ENVIRONMENTAL SCIENCE (2013)

University of the Witwatersrand

BACHELOR OF SCIENCE (HONOURS) IN ECOLOGY, ENVIRONMENT AND CONSERVATION (2006)

University of the Witwatersrand

BACHELOR OF SCIENCE (2005)

University of the Witwatersrand

Employment Record

September 2016 – Current	Prism Environmental Senior Environmental Consultant
August 2011 – August 2016	Nemai Consulting Senior Environmental Consultant
March 2010 – July 2011	Boston City Campus and Business College Braamfontein SAQA Certifications Facilitator and Senior Training Advisor
June 2009 – February 2010	University of Witwatersrand: Strategic Planning Division Institutional Research Assistant

Project Experience

Environmental Authorisation Process (BA, EIA, WL, WULA):

- Steyn City Properties: WULA for Steyn City Phase 2: 2018
- Steyn City Properties: EIA and WULA for the Development of Riverside View Ext 84: 2018
- WSP Africa: WULA for the Development of the K56: 2018

- 4 Wheel Drive Properties (Pty) Ltd: Basic Assessment for A Car and Truck Dealership on Portion 168 of Farm Bultfontein 533 JQ: 2018
- Cream Magenta 273 (Pty) Ltd: EIA and WULA for an Equestrian Estate on Portion 73-76 of Farm Zwartkop 525 JQ: 2018
- Renico Construction: WULA for Weltevreden Park Ext 166: 2017
- Steyn City Properties: Amendment Riverside View Extension 72 to 75: 2017
- Steyn City Properties: Amendment of Steyn City WULA: 2017
- South Africa Happy Island Water World (Pty) Ltd: EIA and WULA for the Proposed Development of a Water Park in Rietfontein, Mogale City. 2016 – 2017.
- Gauteng Department of Human Settlements: Scoping and EIA and WULA for the proposed Syferfontein Mixed Use Housing Development, 2014 – 2016.
- Proplan: Scoping and EIA for the proposed Rustenburg Waste Treatment Facility, 2013 – 2016.
- Ekurhuleni Metropolitan Municipality: Scoping and EIA for the proposed Esselen Park Housing Development, 2015- 2016.
- Ekurhuleni Metropolitan Municipality: Basic Assessment for the proposed Esther Park Housing Development, 2015 – 2016.
- Ekurhuleni Metropolitan Municipality: Basic Assessment for the proposed Pomona Estates Housing Development, 2015 – 2016.
- RBIDZ SOC: Scoping and EIA an WULA for the proposed Richards Bay Industrial Development Zone Phase 1F. 2014- 2016.
- Mangaung Metropolitan Municipality: Scoping and EIA for the proposed Relocation of Bloemfontein Zoo, 2015 – 2016.
- Transnet Capital Projects: Scoping and EIA for Deepening, Lengthening and Widening of Berth 203 to 205, Pier 2, Container Terminal, Port of Durban, 2012 – 2015.
- Wesizwe Platinum Resources: Basic Assessment and WULA for the proposed Ledig Water Supply Pipeline, 2014 – 2015.
- City of Tshwane Metropolitan Municipality: Scoping and EIA for the proposed new Hennops Wastewater Treatment Works (WWTWs), 2012.
- City of Tshwane Metropolitan Municipality: Scoping and EIA for the Upgrade of the Sunderland Wastewater Treatment Works, 2012.
- Transnet Freight Rail: Basic Assessment and Waste License Application for the proposed remediation of 600km of asbestos contaminated land on Transnet Properties – Group A (Port Elizabeth to De Aar), 2011 - 2012.
- Mpumalanga Department of Sports and Recreation: Scoping and EIA for the proposed High Altitude Training Facility in Mpumalanga, 2011 - 2012.
- Sasol Chemical Industry: Waste License Applications for Sasol Chemical Industries sites in Sasolburg, 2012 - 2013.
- Sasol Chemical Industry: Scoping and EIA for the Proposed NATREF Clean Fuels II, 2012 – 2013.

Section 24G Applications:

- Ekurhuleni Metropolitan Municipality: Weltevreden Material Recycling Facility, 2013.

Mining/Prospecting Applications, EMPLans and Amendments:

- Transnet National Port Authority: Mining Right and EIA for Offshore Sandwinning for developments within the Port of Durban, 2016.

Audits (Legal, RoD Compliance / Internal):

- Letamo Game Farm: Environmental Compliance Audit for Letamo Game Farm. 2016.
- TCTA: Environmental Audit of the Orange River Water Resource Development Project –Phase 2c, 2013 – 2016.
- Johannesburg City Parks and Zoo: Compilation of the Legal Register and Legal Compliance Audit for Johannesburg City Parks and Zoo, 2015.

- University of Mpumalanga: Environmental Legal Compliance Audit for the University of Mpumalanga, 2015.
- Sasol: Technical Audit of the Sasol Chemical Industries and Sasol Mining Waste Storage Facilities; Sasolburg, 2014.
- TCTA: Environmental Audit of the Mooi Mgeni Transfer Scheme – Phase 2, 2012.
- MSW: Environmental Control Officer – Joe Slovo Low Level Bridge, Modimolle, 2012.

Other:

- Halewood International South Africa: Industry Waste Management Plan: 2018
- Kiepersol: Integrated Waste Management Plan for an Egg Packaging Facility and Depot: 2017
- Consolidated Power Projects (CONCO) Group: Vision Document: Effects of Climate Change: 2017
- Dr Kenneth Kaunda District: Dr Kenneth Kaunda District Environmental Management Framework, 2014 – 2015.
- uMzinyathi District: uMzinyathi District Environmental Management Framework, 2015.
- Transnet Capital Projects: Berth 203 to 205 Expansion Integrated Waste Management Approach, 2015.
- Department of Water and Sanitation: Climate Change Specialist Study for Foxwood Dam EIA, 2015.
- Transnet Capital Projects: Climate Change Adaptation Monitoring and Evaluation Plan for Berth 203 to 205 Expansion, 2015.
- Department of Water and Sanitation: Boskop Dam Resource Management Plan and Business Plan, 2013.
- Department of Water and Sanitation: Midmar Dam Resource Management Plan and Business Plan, 2013.
- Department of Water and Sanitation: Craigieburn Dam Resource Management Plan and Business Plan, 2013.
- Department of Water and Sanitation: Theewaterskloof Dam Resource Management Plan and Business Plan, 2013.
- Department of Water and Sanitation: Vanderkloof Dam Resource Management Plan and Business Plan, 2013.
- Department of Water and Sanitation: Vygeboom Dam Resource Management Plan and Business Plan, 2014.
- Department of Water and Sanitation: Pongolapoort Dam Resource Management Plan and Business Plan, 2014.
- Department of Water and Sanitation: Inanda Dam Resource Management Plan and Business Plan, 2015.
- Department of Water and Sanitation: Hazelmere Dam Resource Management Plan and Business Plan, 2015.
- Department of Water and Sanitation: Grootdraai Dam Resource Management Plan and Business Plan, 2014.
- Department of Water and Sanitation: Gariep Dam Resource Management Plan and Business Plan, 2014.
- Department of Water and Sanitation: Voelvlei Dam Resource Management Plan and Business Plan, 2014.
- Department of Water and Sanitation: Wriggleswade Dam Resource Management Plan and Business Plan, 2014.
- Department of Water and Sanitation: Vaal Dam Resource Management Plan and Business Plan, 2014.
- Department of Water and Sanitation: Mthatha Dam Resource Management Plan and Business Plan, 2015.
- Department of Water and Sanitation: Allemenskraal Dam Resource Management Plan and Business Plan, 2015.
- Department of Water and Sanitation: Greater Brandvlei Dam Resource Management Plan and Business Plan, 2015.

- Department of Environmental Affairs: Mapungubwe Culture Landscape Environmental Management Framework, 2014.
- Nkomati Anthracite Mine: Social Impact Assessment for the Nkomati Anthracite Mine, Mpumalanga, 2011.

Professional Affiliations

- Professional Member of Southern African Institute of Ecologists and Environmental Scientists: 2015 - 2016.
- SACNASP– Pr. Sci. Nat.(116221): 2016 (Current)
- Professional Member of the International Association for Impact Assessment: South Africa (IAIASa): 2018



herewith certifies that

Vanessa Jean Stippel

Registration Number: 116221

is registered as a

Professional Natural Scientist

in terms of section 20(3) of the Natural Scientific Professions Act, 2003
(Act 27 of 2003)

in the following field(s) of practice (Schedule 1 of the Act)

Environmental Science

Effective **21 September 2016**

Expires **31 March 2020**



A handwritten signature in black ink, appearing to read 'Botha', positioned above a horizontal line.

Chairperson

A handwritten signature in black ink, positioned above a horizontal line.

Chief Executive Officer



EAPASA

Unit 19 Oxford Office Park
3 Bauhinia Street
Highveld Techno Park
Centurion
0157
Tel. (+27) 12 880 2154

Environmental Assessment Practitioners Association of South Africa

Advancing environmental assessment practice in South Africa



Email: registrar@eapasa.org / Website: www.eapasa.org

Mrs Vanessa Stippel
34 Scheepers Street
North Riding
Johannesburg
2162

Sent by email to: vanessa.brueeton@gmail.com

Dear Mrs Stippel

**Registered Environmental Assessment Practitioner: Number 2019/175
Vanessa Stippel : South African ID 8408300040083**

The Environmental Assessment Practitioners Association of South Africa (EAPASA) herewith certifies that Vanessa Stippel is a Registered Environmental Assessment Practitioner (EAP) in accordance with the prescribed criteria of Regulation 15.(1) of the Section 24H Registration Authority Regulations (Regulation No. 849, Gazette No. 40154 of 22 July 2016, of the National Environmental Management Act (NEMA), Act No. 107 of 1998, as amended).

Your registration is duly authorised by EAPASA as the single Registration Authority for EAPs in South Africa (appointed as per Regulation No. 104, Gazette No. 41434 of 8 February 2018, in terms of section 24H(3)(a) of the NEMA). Your status as a Registered EAP is displayed in the 'EAP Register' - please find your name and contact email address at

<https://registration.eapasa.org/registered-practitioners>

Your registration is effective for a period of five years from 30 November 2019, and expires on 30 November 2024. The renewal of your registration in 2024 will be contingent on you having met the requirements of EAPASA's Continuing Professional Development (CPD) policy during each year of registration.

As a Registered EAP you are required to uphold the EAPASA Code of Ethical Conduct and Practice in your professional endeavours, towards the goal of quality assurance in environmental assessment practice.

Please accept my congratulations on your registration.

Best regards

Dr Richard Hill

Registrar

Date: 30 November 2019

Board Members: Ms Snowy Makhudu (Chairperson), Mr Khangwelo Desmond Musetsho (Vice-Chairperson),
Mr Ntsako Baloyi, Mr Zama Dlamini, Mr Siyabonga Gqalangile, Ms Jacqui Hex, Ms Sibusisiwe Hlela,
Mr Malcolm Moses, Mr Phumudzo Nethwadzi, Mr Danie Neumann, Ms Keshni Rughoobeer.

Registrar: Dr Richard Hill
NPO Reg. No. 122-986

Curriculum vitae: Mr D Botha

Name : **BOTHA, DE WET**
Date of Birth : 20 June 1977
Profession/Specialisation : Principle Environmental Scientist & Biodiversity Specialist
Nationality : South African
Years' experience : 16

Key Experience

Mr Botha has extensive experience in conducting a broad range of applications related to authorisation from the various authorities managing Environmental Legislation in South Africa. Mr Botha has completed numerous EIA's and Basic Assessment Report applications. He has conducted EIA reviews and has acted in a specialist advisory role to other consultants/applicants. Management plans compiled include Environmental Management Plans, Open Space EMPs, Wetland EMP's and Waste Management Plans.

The practitioner has extensive and specialised experience in wetland and aquatic assessment and delineation, as well as applications for Water Use Licenses. He is registered as a Professional Natural Scientist (Pr.Sci.Nat. Reg No. 119979) with the Scientific Council of Natural Scientific Professions (SACNASP).

Additional to this, Mr Botha also has experience in Visual Assessments, Specialist Faunal and Floral Surveys, Grassland Rehabilitation and Baseline Agricultural Potential Studies. Mr Botha is an experienced Environmental Control Officer and –Auditor. GIS data and spatial modelling is included in Mr Botha's range of capabilities, along with GIS sensitivity mapping and Project Management.

As a specialist interest, Mr Botha has been involved with research and studying the habitat area of the Juliana's Golden Mole, a Red List threatened species, in association with the University of Pretoria.

Education & Key qualifications

MAGISTER ARTIUM (M.A. Environmental Management)

University of Johannesburg (2005-2006)

- Thesis: *Establishing Guidelines for Environmental Management Plans for Golf Course Developments in Gauteng Province.*
- Syndicate research: *Baseline Environmental Assessment investigating the flow of Mercury through the system at the University of Johannesburg in Mercury containing Lighting as a by- product.*
- The biosphere & environmental studies.
- Environmental analysis, management skills & perspectives.

DIPLOMA: REMOTE SENSING AND IMAGE PROCESSING

Rand Afrikaans University (2001)

DIPLOMA: GEOGRAPHIC INFORMATION SYSTEMS (GIS)

Rand Afrikaans University (2001)

BACHELOR OF ARTS (HONOURS) (BA. (Hons) Geography and Environmental Management)

Rand Afrikaans University (2001)

Modules completed:

- *Geomorphology*
- *Energy Technology*
- *Remote Sensing and Satellite Imagery*
- *Geographic Information Systems*
- *Philosophy and Methodology of Geography*

POST GRADUATE HIGHER EDUCATIONAL DIPLOMA (PHED).

Rand Afrikaans University (1999-2000)

BACHELOR OF ARTS (BA. Geography and Environmental Management)

Rand Afrikaans University (1996-2000)

Supplementary Qualifications

- Hydropedology and Wetland Functioning – (Water Business Academy / Terra Soil Science) (2018)
- General Water Use Authorisations Workshop (2017) IMBEWU Sustainability
- Understanding the Basics of Wetland Ecosystems (2017) Gauteng Wetland Forum
- Wetland Plant Taxonomy (2017) Water Research Commission
- Financial Provision Regulations and Mine Closure Requirements (2016) IMBEWU Sustainability Legal Specialists.
- SASS5 Aquatic Biomonitoring Training Course (DWA, Ground Truth) (2014)
- Tools for Wetland Assessments (Rhodes University) (2011) (Cum Laude) - Certified
- Short Course in Soil Classification and Wetland Delineation (Terra Soil Science) (2008)
- Wetland and Riparian Delineation Course (DWA Accredited) (2008)
- Practical Field Training – Golden Mole Field Surveys (Pretoria of University; Dr. S. Maree) (2007)
- Lead auditors course (Environmental) ISO 14000 (University of Johannesburg) (2006)
- Geographical Information Systems (GIS) (Run by Geographical Information Management Systems (GIMS) - Introduction to Arcview GIS (2000)
- Geographical Information Systems (GIS) (Run by Geographical Information Management Systems (GIMS) – Introduction and Advance ArcInfo (2000)
- Geographical Information Systems (GIS) Introduction to MapInfo (2000)
- Geographical Information Systems (GIS) Advance and Specialist Map-Info (2000)

Employment record

August 2005 – Present	Prism EMS, Managing Director, Principle EAP, Wetland Specialist
August 2007 – Present	Greenline Environmental, Director, Principle EAP & Wetland Specialist
April 2004 – July 2005	Holgate and Associates, Environmental Scientist
January 2003 – February 2004	North Westminster Community College (UK), HOD Humanities Dept.
January 2002 – December 2002	Kelmscott Secondary School, (UK), HOD Geography
January 2001 – December 2001 (Geography)	Hoërskool Vryburger, Germiston, Teacher
August 1999 – December 2000	The Knowledge Factory (Primedia), GIS Specialist/Product Owner

Experience record (Key Projects)

Relevant Project Experience (more detail available on request)

Mr Botha has more than sixteen (16) years' experience in the field of Environmental Management, thirteen (13) years' experience as a wetland scientist and ten (10) years' experience as a golden mole specialist. He has conducted, in excess of:

- 50 Environmental Conservation Act Applications
- 10 Development Facilitation Act – Environmental Assessments
 - 10 Environmental Scoping Reports

- 10 Scoping and Environmental Impact Assessments (EIA)
- 30 Basic Environmental Assessments (BAR)
- 80 Wetland Delineations, Assessments and Rehabilitations
- 25 Ecological and Biodiversity Assessments
- 20 Environmental Audits
- 15 Section 24G Rectification Applications (Legal Applications)
- 50 Environmental Management Programmes (EMPr)
- 15 Water Quality Assessments (Rivers, dams etc.)
- 15 Water Use License Applications (WULA)
- 5 Air Emissions Licenses (AEL)

Due to the vast list of studies and projects conducted only a summary of some of the key projects conducted over the last 10 years are documented below.

Environmental Assessments

Environmental Impact Assessment (EIA)

- **Coega Tank Farm** - Environmental Impact Assessments (EIA) for an Integrated Environmental Authorisation (including Air Emissions License (AEL)) to develop a fuel tank farm in zone 7 of COEGA
- **Eco Planet Bamboo** - Environmental Impact Assessments (EIA) and Air Emissions License (AEL) for a Core Carbon Manufacturing Plant in the Grahamstown area.
- **Rand Water VG Residue Line** - Environmental Impact Assessments (EIA) for the installation of the Rand Water Vereeniging water treatment pump station residue pipeline. The pipeline and associated infrastructure is installed from the Rand Water Vereeniging Pump Station to the connection point at the Rand Water Zuikerbosch Pump Station.
- **Chalmar Beef Composting** - Environmental Impact Assessments (EIA) for an Integrated Environmental Authorisation (including Water Use License and Waste License) to develop a composting facility for Chalmar Beef, linked to their abattoir facility and operations.
- **Portion 31 Nietgedacht 535 - Waste Handling Facility** - Environmental Impact Assessments (EIA) for an Integrated Environmental Authorisation (including Water Use License and Waste License) to develop a waste transfer station (or waste handling facility) on the remainder of portion 31 of the farm Nietgedacht 535 JQ.
- **South Africa Happy Island Water World** - Environmental Impact Assessments (EIA) and Water Use License Application (WULA) for a recreational water park development.
- **Montrose Ultra City (N3)** - Environmental Impact Assessments (EIA) and Water Use License Application (WULA) for a Filling station, Truck Stop and Ancillary uses, Sewage Treatment Facility.
- **Vista Park Ext 3** - Environmental Impact Assessments (EIA) and Water Use License Application (WULA) for a Provincial Hospital and mixed used development in the Bloemfontein area.

Basic Environmental Assessments (BAR)

- **Truck Dealership - Ptn 168 Bultfontein 533JQ** - Basic Environmental Assessments (BAR) for Truck Dealership and ancillary uses on Portion 168 of the Farm Bultfontein 533JQ.
- **Steyn City Fuel Storage Facility** - Basic Environmental Assessments (BAR) for the Steyn City Fuel Storage Facility and ancillary uses.
- **Midridge Park Ext 25** - Basic Environmental Assessments (BAR) and Water Use License Application (WULA) for the Midridge Park Ext 25 commercial township development and associated infrastructure.
- **Nederburg | Portion 3 of the farm Nederburg Estates No 613** - Basic Environmental Assessments (BAR) and Water Use License Application (WULA) for the rezoning of Portion 3 of the farm Nederburg Estates No 613 and development of a Residential Township and installation of infrastructure.
- **Bergbron Ext 14** - Basic Environmental Assessments (BAR) for the Bergbron Ext 14 Residential township development and associated infrastructure.
- **Rose Road Intersection | GDRT** - Basic Environmental Assessments (BAR) and Water Use License Application (WULA) for the Rose Road Intersection with William Nicol Drive.
- **K33 | GDRT** - Basic Environmental Assessments (BAR) and Water Use License Application (WULA)

Environmental Management Programmes (EMPr)

- **Steyn City – Construction Phase EMPr** - A site specific Environmental Management Programme (EMPr) was developed specifically for the construction phase of Steyn City; a mixed use development. The EMPr also caters for infrastructure installation within the development.
- **Northam Platinum - EMPr amendment and update** - A site and mining-right specific Environmental Management Programme (EMPr) amendment and update to accommodate the expansion of the mining-rights area for Northam Platinum Mine.

Relevant ECO and Auditing Project Experience (more detail available on request)

- **Steyn City** - residential and lifestyle development ECO in Johannesburg (Gauteng Province) 2011-2018. Environmental Control Officer. Prism EMS was appointed to conduct the required ECO services for the Steyn City Residential and Lifestyle Development. The development is currently the largest 'green' development in South Africa and stringent requirements set by the Department of Water Affairs is to be complied with by the developer and its contractors. The reports are provided to the Department for perusal and comment. (Steyn City development).
- **Steyn City** - residential and lifestyle development Water Use License Annual Audits in Johannesburg (Gauteng Province) 2011-2018. Environmental Auditor. Prism EMS was appointed to conduct annual Water Use License Audits for the Steyn City Residential and Lifestyle Development. The development is currently the largest 'green' development in South Africa and stringent requirements set by the Department of Water Affairs is to be complied with by the developer and its contractors. The reports are provided to the Department for perusal and comment. (Steyn City development).
- **Northam Platinum Mine Performance Assessment**, Northam (Limpopo Province) 2014-2018. Environmental Auditor. The Northam Platinum Mine has been operating for numerous years. As part of the mine's functioning, a number of environmental standards, licenses, permits and other requirements need to be complied with and include the EAs, EMPr and Water Use License. A detailed performance assessment in terms of the mine's compliance to such requirements was undertaken with another senior employee of the firm. The results were reported in a comprehensive performance assessment report. (Northam Platinum Mine).
- **Northam Platinum Mine Waste License Audit**, Northam (Limpopo Province) 2014-2018. Environmental Auditor. The Northam Platinum Mine has been operating for numerous years. As part of the mine's functioning, a number of environmental standards, licenses, permits and other requirements need to be complied with and include the Waste License. A detailed performance assessment in terms of the mine's compliance to the Waste Licence was undertaken with another senior employee of the firm. The results were reported in a comprehensive performance assessment report. (Northam Platinum Mine).
- **Rand Park Ridge Ext 105** - Residential development ECO in Johannesburg (Gauteng Province) 2017-2018. Environmental Control Officer. Prism EMS was appointed to conduct the required ECO services for the Rand Park Ridge Ext 105 Residential Development. The reports are provided to the Departments for perusal and comment.
- **Bergbron Ext 14** - Residential development ECO in Johannesburg (Gauteng Province) 2017-2018. Environmental Control Officer. Prism EMS was appointed to conduct the required ECO services for the Bergbron Ext 14 Residential Development. The reports are provided to the Departments for perusal and comment.
- **Sunninghill Ext 168** - Residential development ECO in Johannesburg (Gauteng Province) 2017-2018. Environmental Control Officer. Prism EMS was appointed to conduct the required ECO services for the Sunninghill Ext 168 Residential Development. The reports are provided to the Departments for perusal and comment.
- **Laser Park Ext 32** - Commercial development Environmental Authorisation (EA) Audits in Johannesburg (Gauteng Province) 2016. Environmental Auditor. Prism EMS was appointed to conduct the Environmental Authorisation (EA) Audit for the Laser Park Ext 32 Development. The reports are provided to the GDARD for perusal and comment.
- **Khumani Iron Ore Mine Performance Assessment**, Kathu (Northern Cape Province) 2014. Environmental Auditor. The Khumani Iron Ore Mine has been operating for numerous years. As part of the mine's functioning, a number of environmental standards, licenses, permits and other requirements need to be complied with and include the EAs, EMPr and Water Use License. A detailed performance assessment in terms of the mine's compliance to such requirements was undertaken with another senior employee of the firm. The results were reported in a comprehensive performance assessment report.

(Khumani Iron Ore Mine).

- **Ferrero Environmental Compliance Determinations**, Midvaal (Gauteng Province) 2014. Environmental Assessor. Tasked to conduct quarterly environmental compliance audits to determine actual client compliance to environmental performance standards and overall legislative requirements. (Imsofer South Africa).
- **Macsteel Environmental Legal Compliance Audit**, Boksburg (Gauteng Province) 2013. Environmental Auditor. Tasked to conduct environmental compliance audits to determine actual client compliance to environmental performance standards and overall legislative requirements. (Macsteel - South Africa).

Environmental Legal Experience (more detail available on request)

Mr Botha has concluded on several section 24G rectification applications in respect of illegal activities that has commenced prior to authorisation under the NEMA. Several other legal notice response and applications were also dealt with over the past few years. Some include coastal protection notices etc.

A short non-descriptive list is provided due to the legal nature of the applications.

- 62 Austin Road - Current
- Grace Trinity School for Girls - Current
- St Declans School for Boys – Current
- 7x Wilderness NEM ICM - Current
- Halewood International
- Plot 59 Bredell AH
- Plot 1 Marister AH
- Plot 2 Marister AH
- Plot 3 Marister AH
- Avlon School
- Cycle Park
- Sunninghill School
- 210 Kimbult
- Portion 53 Rietvlei 101
- BP Wiggel
- AG Die Casting
- Matt Cast Supplies
- CCP & Bi Metals
- Vikings Foundry
- JC Impellers
- Quantus Foundry
- Tantalite Resources
- Wilgeheuwel Ext 26
- Consol Clayville

Golden Mole Surveys/Assessments:

- Rand Water Pipeline in the Bronberg Conservancy;
- Willows Quarry
- Shere Development
- Farm Hermansburg 495 KT – Transvaal Group Mines
- Die Wilgers Ext 79
- Bronberg Biodiversity Management Plan (Juliana's Golden Mole)

Air Quality Projects:

- BP Wiggill – Smelter, 2016;
- Northam Platinum, North West, 2015;
- Maroeloesfontein Andalusite Mine, North West, 2015;
- Eco-Planet Bamboo Core Carbon, Grahamstown, Eastern Cape, 2014;

Aquatic Assessments:

- Sunninghill Ext 168, 2016;
- Happy Island Water Park, 2016;
- Eskom, Rustenburg, North West Province, 2015;
- Steyn City, Johannesburg, Gauteng, 2015;
- Nederburg, Paarl, Western Cape, 2014;
- The Reeds, Johannesburg, Gauteng, 2014;
- Elias Motsoaledi, Soweto, Gauteng, 2014;
- K6 – Provincial Road, Pretoria, Gauteng, 2013;

Wetland Assessments:

- Needwood, 2019
- Erf 580 Glenanda, 2019
- Afrimat Silica, 2019
- Crown Ext 10, 2019
- Vulindlela Bridge Repair, 2019
- Greenside Ext 7, 2018
- Ptn 73_76 Zwartkop 525 JQ, 2018
- Unigray, 2018
- 62 Austin Road, 2018
- Rietvlei Zoo Farm, 2018
- K56, GDRT, 2018
- K33, GDRT, 2018
- Rand Park Ridge Ext 26, 40, 105, 2017
- Barlow Park, 2017
- Strubensvallei Ext, 21, 2017
- Greengate Ext 68, 2016;
- Happy Island Water Park, 2016;
- Wilgeheuwel Ext 60, 2016;
- Rose interchange, Gautrans, 2015;
- Eskom, Rustenburg, North West Province, 2015;
- Mogalakwena Platinum Mine, Limpopo Province, 2015;
- Steyn City, Johannesburg, Gauteng, 2014;
- Nederburg, Paarl, Western Cape, 2014;
- Elias Motsoaledi, Soweto, Gauteng, 2014;

Recently completed Water Use License Applications include:

- K56 – GDRT Route
- Ascot on Vaal Intersection (K55) – GDRT Route
- K33 – GDRT Route
- Rose Interchange – GDRT Route & Interchange
- Witpoortjie Ext. 52 & 57 Township Development – to facilitate the installation of essential services to the township.
- Winterveld – Installation of bulk sewer lines
- Vista Park Ext.3 - mixed-use township development and related bulk services
- Steyn City - mixed-use township development and related bulk services
- Joburg Water - Installation of bulk sewer lines
- Rooiwaal – Tswane - Installation of bulk sewer lines
- Soshanguve South Ext. 6 – Bridge crossing
- Elias Motsoaledi – Bridge crossing

Professional affiliations

- Founder Member of Environmental Assessment Practitioners Association of South Africa (EAPASA)
- Member of the International Association for Impact Assessors (IAIAAs) (1653)
- Member of the Gauteng Wetland Forum
- Member of South African Wetland Society
- SACNASP– Pr. Sci. Nat. (119979)



herewith certifies that

De Wet Botha

Registration Number: 119979

is registered as a

Professional Natural Scientist

in terms of section 20(3) of the Natural Scientific Professions Act, 2003
(Act 27 of 2003)
in the following field(s) of practice (Schedule 1 of the Act)

Environmental Science

Effective **19 February 2019**

Expires **31 March 2020**



A handwritten signature in black ink, appearing to read 'Botha', written over a horizontal line.

Chairperson

A handwritten signature in black ink, written over a horizontal line.

Chief Executive Officer



EAPASA

Unit 19 Oxford Office Park
3 Bauhinia Street
Highveld Techno Park
Centurion
0157
Tel. (+27) 12 880 2154

Environmental Assessment Practitioners Association of South Africa

Advancing environmental assessment practice in South Africa



Email: registrar@eapasa.org / Website: www.eapasa.org

Mr De Wet Botha
12A Beacon Road
Poortview
Roodepoort
2040

Sent by email to: dewet@prismems.co.za

Dear Mr Botha

Registered Environmental Assessment Practitioner: Number 2019/1209
De Wet Botha : South African ID 7706205069086

The Environmental Assessment Practitioners Association of South Africa (EAPASA) herewith certifies that De Wet Botha is a Registered Environmental Assessment Practitioner (EAP) in accordance with the prescribed criteria of Regulation 15.(1) of the Section 24H Registration Authority Regulations (Regulation No. 849, Gazette No. 40154 of 22 July 2016, of the National Environmental Management Act (NEMA), Act No. 107 of 1998, as amended).

Your registration is duly authorised by EAPASA as the single Registration Authority for EAPs in South Africa (appointed as per Regulation No. 104, Gazette No. 41434 of 8 February 2018, in terms of section 24H(3)(a) of the NEMA). Your status as a Registered EAP is displayed in the 'EAP Register' - please find your name and contact email address at

<https://registration.eapasa.org/registered-practitioners>

Your registration is effective for a period of five years from 30 November 2019, and expires on 30 November 2024. The renewal of your registration in 2024 will be contingent on you having met the requirements of EAPASA's Continuing Professional Development (CPD) policy during each year of registration.

As a Registered EAP you are required to uphold the EAPASA Code of Ethical Conduct and Practice in your professional endeavours, towards the goal of quality assurance in environmental assessment practice.

Please accept my congratulations on your registration.

Best regards

Dr Richard Hill
Registrar
Date: 30 November 2019

Board Members: Ms Snowy Makhudu (Chairperson), Mr Khangwelo Desmond Musetsho (Vice-Chairperson),
Mr Ntsako Baloyi, Mr Zama Dlamini, Mr Siyabonga Gqalangile, Ms Jacqui Hex, Ms Sibusisiwe Hlela,
Mr Malcolm Moses, Mr Phumudzo Nethwadzi, Mr Danie Neumann, Ms Keshni Rughoobee.

Registrar: Dr Richard Hill
NPO Reg. No. 122-986