

SITE VERIFICATION REPORT

PROPOSED DEVELOPMENT OF PORTION 565 (A PORTION OF PORTION 19) OF THE FARM ZEVENFONTEIN 407 JR, CITY OF JOHANNESBURG | KENGIES EXT 35

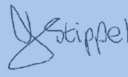


FINAL

Proponent:
Lumal Projects
Project Reference:
22052 - Kengies Ext 35
Report Date
June 2021
Report Reference:
22052-SVR-1

DOCUMENT CONTROL

Project Name	Proposed Development of Portion 565 (a Portion of Portion 19) of the Farm Zevenfontein 407 JR, City of Johannesburg
Report Title	Site Verification Report
Authority Reference Number	GAUT 002/20-21/E2803
Report Status	Final

Applicant Name	Lumal Projects (Pty) Ltd.
----------------	---------------------------

	Name	Signature	Date
Document Compilation	Ms. V Stippel (MSc. Animal, Plant and Environmental Science). Reg. EAP Pr.Sci.Nat.		2021/06
Document Review	Mr. D. Botha (M.A. Env.Man.) (PHED) Wetland Specialist Reg. EAP Pr.Sci.Nat.		2021/06
Document Signoff	Mr. D. Botha (M.A. Env.Man.) (PHED) Wetland Specialist Reg. EAP Pr.Sci.Nat.		2021/06

DOCUMENT PROGRESS

Distribution List

Date	Report Reference Number	Document Distribution	Number of Copies
25 June 2021	22052-SVR-1	GDARD	Online

Amendments on Document

Date	Report Reference Number	Description of Amendment

INDEMNITY AND CONDITIONS RELATING TO THIS REPORT

The findings, results, observations, conclusions and recommendations given in this report are based on the author's best scientific and professional knowledge as well as available information. The report is based on survey and assessment techniques which are limited by time and budgetary constraints relevant to the type and level of investigation undertaken and Prism Environmental Management Services and its staff reserve the right to modify aspects of the report including the recommendations if and when new information becomes available from ongoing research or further work in this field, or pertaining to this investigation.

Although Prism Environmental Management Services exercises due care and diligence in rendering services and preparing documents, Prism Environmental Management Services accepts no liability, and the client, by receiving this document, indemnifies Prism Environmental Management Services and its directors, managers, agents and employees against all actions, claims, demands, losses, liabilities, costs, damages and expenses arising from or in connection with services rendered, directly or indirectly by Prism Environmental Management Services and by the use of the information contained in this document.

This report must not be altered or added to without the prior written consent of the author. This also refers to electronic copies of this report which are supplied for the purposes of inclusion as part of other reports, including main reports. Similarly, any recommendations, statements or conclusions drawn from or based on this report must make reference to this report. If these form part of a main report relating to this investigation or report, this report must be included in its entirety as an Annexure or separate section to the main report.

COPYRIGHT

Copyright on all documents, drawings and records, whether manually or electronically produced, which form part of the submission and any subsequent report or project document, shall vest in Prism Environmental Management Services.

The client, on acceptance of any submission by Prism Environmental Management Services and on condition that the client pays to Prism Environmental Management Services the full price for the work as agreed, shall be entitled to use for its own benefit:

- The results of the project;
- The technology described in any report; and
- Recommendations delivered to the client.

Should the applicant wish to utilise any part of, or the entire report, for a project other than the subject project, permission must be obtained from Prism Environmental Management Services to do so. This will ensure validation of the suitability and relevance of this report on an alternative project.

TABLE OF CONTENTS

1	INTRODUCTION.....	7
2	REQUIREMENTS OF THE SITE SENSITIVITY VERIFICATION AND REPORT OUTLINE	8
3	DETAILS OF THE ENVIRONMENTAL ASSESSMENT PRACTITIONER (EAP)	9
4	DESKTOP ASSESSMENT OF SENSITIVITY	10
4.1	PROJECT LOCATION.....	10
4.2	SUMMARY OF THE FINDINGS OF THE NATIONAL SCREENING TOOL.....	12
4.3	ADDITIONAL DESKTOP SENSITIVITY ASSESSMENT	12
4.4	OTHER AVAILABLE AND RELEVANT INFORMATION	16
5	SATELLITE IMAGERY ASSESSMENT	19
5.1	HISTORICAL IMAGERY	19
5.2	EXISTING STATUS.....	21
5.3	CIVIL AVIATION AND DEFENCE	22
6	SITE VERIFICATION.....	23
6.1	SITE CONDITIONS	23
6.2	UPDATED SENSITIVITY	28
7	CONCLUSION	32
8	ANNEXURES	33
8.1	NATIONAL SCREENING TOOL REPORT	33

LIST OF FIGURES

FIGURE 4-1: LOCALITY MAP.....	10
FIGURE 4-2: AERIAL LOCALITY MAP.....	11
FIGURE 4-3: GPETF 13	13
FIGURE 4-4: C-PLAN	14
FIGURE 4-5: PROTECTED AREAS AND IMPORTANT BIRD AREAS	14
FIGURE 4-6: SURFACE WATER.....	15
FIGURE 4-7: THREATENED ECOSYSTEMS	15
FIGURE 4-8: GAPA.....	16
FIGURE 4-9: KENGIES REGIONAL CHANNEL LAYOUT (TRIPLE 3 ENGINEERING, 2008).....	17
FIGURE 4-10: ARMOFLEX PLAN AND TYPICAL CHANNEL LINING.....	18
FIGURE 4-11: PHOTOGRAPH OF ARMOFLEX CHANNEL ON ADJACENT PROPERTY	18
FIGURE 5-1: GOOGLE EARTH IMAGERY – SEPTEMBER 2008	19
FIGURE 5-2: GOOGLE EARTH IMAGERY – SEPTEMBER 2010	20
FIGURE 5-3: GOOGLE EARTH IMAGERY – DECEMBER 2012	20
FIGURE 5-4: GOOGLE EARTH IMAGERY – JULY 2019	21
FIGURE 5-5: GOOGLE EARTH IMAGERY – CURRENT STATUS	21
FIGURE 5-6: DISTANCE TO LANSERIA AIRPORT	22
FIGURE 5-6: DISTANCE TO CLOSEST MILITARY BASE.....	23

LIST OF TABLES

TABLE 2-1: REPORT OUTLINE.....	8
TABLE 3-1.: DETAILS OF THE ASSESSOR	9
TABLE 4-1: DESKTOP SENSITIVITY AS IDENTIFIED BY THE NATIONAL SCREENING TOOL.....	12
TABLE 6-1: SITE PHOTOGRAPHS.....	25
TABLE 6-2: SITE VERIFICATION SENSITIVITY	30

1 INTRODUCTION

The proposed development of Portion 565 (a portion of Portion 19) of the Farm Zevenfontein No. 407-JR, City of Johannesburg, Gauteng Province, to be known as Kengies Extension 35, involves the development of fifty-one (51) “Residential 2” erven which have a combined area of 1.17 hectares (ha). In addition, one (1) “Special” erf for Private Roads, Guardhouse and Access Control Measures (0.51ha) and one (1) “Private Open Space” erf of 0.35ha will also be developed. All necessary access, internal roads and services will be put in place and include:

- The continuation of the regional bio-engineered stormwater drainage channel with associated buffer strips. It is important to note that this regional channel had been completed in its entirety and this small piece, traversing this development, is the last infill section required. As required by the Competent Authority at the time, this regional bio-engineered stormwater drainage channel has been approved separately for each development in the area. **It should also be noted that the completion of this bio-engineered stormwater system is required for the management of stormwater in the area and is recommended from a wetland and aquatic point of view.**
- A stormwater attenuation pond of 484m² and associated stormwater pipelines and subsurface drainage. The stormwater pipes will vary between 300mm to 600mm in diameter.
- Internal sewer pipelines between 110mm and 160mm in diameter which will connect to the existing bulk sewer line that occurs on the northeastern corner of the proposed development.
- Internal water pipelines of 110mm diameter which will connect to the existing bulk water line in Frederick Road.
- Access to the site which will include 2 inbound lanes of 3.0m each and 1 outbound lane of 4.5m. These lanes will have a 10m throat length. A 2.5m wide island will be put in place and will include a guardhouse.
- An internal road which has been designed to accommodate refuse collection internally and which is 5m in width and occurs in a 10.5m road reserve.

Prism Environmental Management Services (Prism EMS) has been appointed to undertake the requisite Environmental Authorisation process.

In line with the recent Procedures for the assessment and minimum criteria for reporting on identified environmental themes in terms of Section 24(5)(a) and (h) and 44 of the National Environmental Management Act, 1998 when applying for Environmental Authorisation (GN 320 of 20 March 2020), a Site Sensitivity Verification is required prior to commencing with the specialist assessment and aims to confirm the sensitivity of the site identified by the National Screening Tool.

This Site Verification Report aims to provide the findings of this Site Sensitivity Verification and will included as an appendix to the Basic Assessment Report.

2 REQUIREMENTS OF THE SITE SENSITIVITY VERIFICATION AND REPORT OUTLINE

In terms of GN 320 of 20 March 2020, the site sensitivity verification can be undertaken by an environmental assessment practitioner (EAP) or a specialist and should utilize the following methodology:

- A desk top analysis, using satellite imagery;
- A preliminary on-site inspection; and
- Any other available and relevant information.

Further, the outcome of the site sensitivity verification must be recorded in a report that--

- Confirms or disputes the current use of the land and the environmental sensitivity as identified by the screening tool, such as new developments or infrastructure, the change in vegetation cover or status etc.;
- Contains a motivation and evidence (e.g. photographs) of either the verified or different use of the land and environmental sensitivity; and
- Is submitted together with the relevant assessment report prepared in accordance with the requirements of the Environmental Impact Assessment Regulations¹ (EIA Regulations).

In order to ensure these requirements are met, they are tabulated together with the associated chapter name in Table 2-1.

Table 2-1: Report Outline

Chapter Number	Chapter Name	Link to GN 320 of 20 March 2020
Chapter 1	Introduction	-
Chapter 2	Requirements of the Site Sensitivity Verification and Report Outline	-
Chapter 3	Details of Environmental Assessment Practitioner	-
Chapter 4	Desktop Assessment of Sensitivity	<ul style="list-style-type: none"> • Any other available and relevant information
Chapter 5	Satellite Imagery Assessment	<ul style="list-style-type: none"> • A desk top analysis, using satellite imagery
Chapter 6	Site Verification	<ul style="list-style-type: none"> • A preliminary on-site inspection • Contains ... evidence (e.g. photographs) of either the verified or different use of the land and environmental sensitivity

Chapter 7	Conclusion	<ul style="list-style-type: none"> • Confirms or disputes the current use of the land and the environmental sensitivity as identified by the screening tool, such as new developments or infrastructure, the change in vegetation cover or status etc.; • Contains a motivation ...of either the verified or different use of the land and environmental sensitivity
-----------	------------	--

3 DETAILS OF THE ENVIRONMENTAL ASSESSMENT PRACTITIONER (EAP)

Prism EMS have been appointed to undertake the required Environmental Authorisation Process in terms of the National Environmental Management Act (NEMA), 1998 (Act 108 of 1998) and the associated Environmental Impact Assessment (EIA) Regulations, 2014 (as amended). Details of the Environmental Assessment Practitioner who was responsible for the Site Verification is provided in Table 3-1 and the relevant Curriculum Vitae is included in the Basic Assessment Report.

Table 3-1.: Details of the Assessor

Assessor:	Vanessa Stippel
Company:	Prism Environmental Management Services
Qualifications:	MSc. Ecology, Environment and Conservation
Experience:	10 years
Affiliation/ Registration	Professional Member of Southern African Institute of Ecologists and Environmental Scientists SACNASP Pr.Sci.Nat. (116221) EAPASA Registered EAP (2019/175)
Address:	PO Box 1401, Wilgeheuwel, 1736
Tel:	087 985 0951
Fax:	086 601 4800
Email:	vanessa@prismems.co.za

4 DESKTOP ASSESSMENT OF SENSITIVITY

4.1 Project Location

The proposed development takes place on Portion 565 (a portion of Portion 19) of the Farm Zevenfontein No. 407-JR, City of Johannesburg, Gauteng Province. The following are the centre coordinates of the site:

- 25°59'59.86"S; 27°59'52.89"E

Figure 4-1 provides an overview of the project locality and is followed by **Figure 4-2** which provides the aerial locality map.

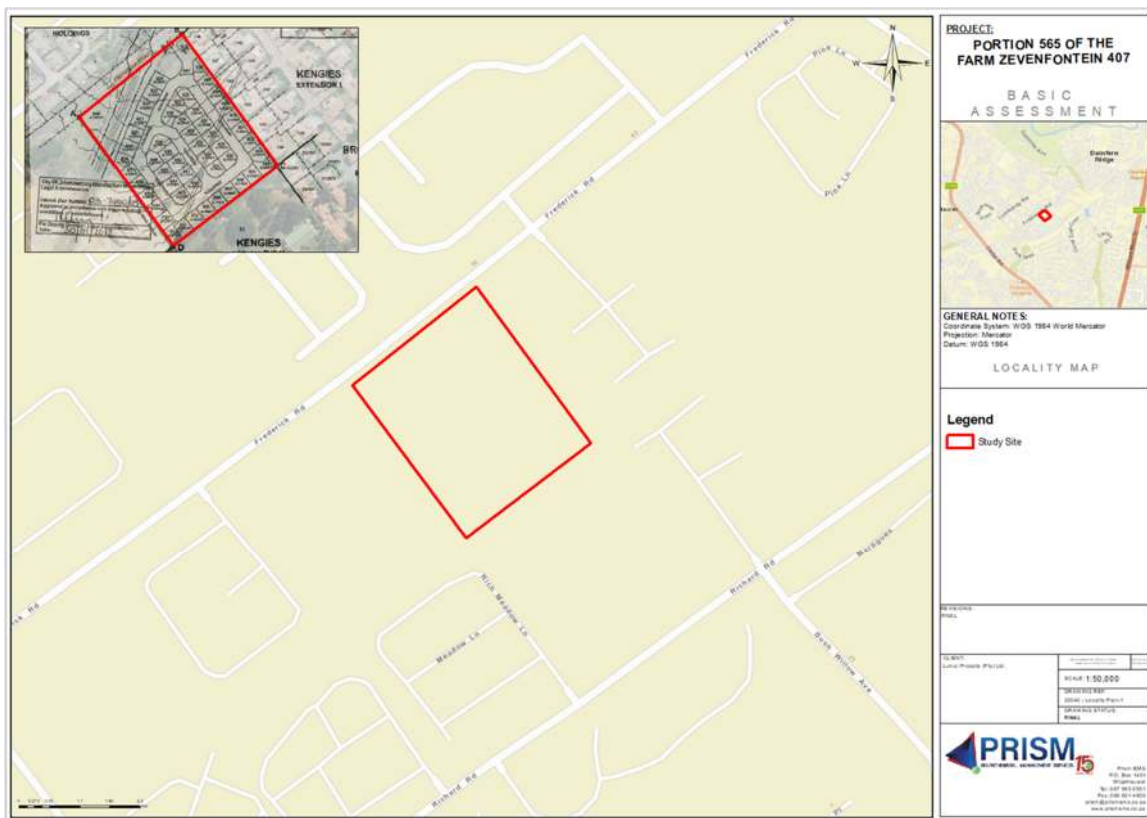


Figure 4-1: Locality Map



Figure 4-2: Aerial Locality Map

4.2 Summary of the Findings of the National Screening Tool

In terms of the Notice of the requirements to submit a report generated by the National Web Based Environmental Screening Tool in terms of Section 24(5)(h) of the National Environmental Management Act, 1998 and Regulation 18(1)(b)(v) of the EIA Regulations, 2014 (as amended) (GN 960 of 5 July 2019), a report generated on the National Screening tool must be submitted as part of the Application for Environmental Authorisation. It is also an important component of the site sensitivity verification, as the aim of the verification is to confirm/dispute the findings of the National Screening Tool Report.

As per the requirements, a Report has been generated and is included as Annexure 12.2. of this report. A summary of the findings of the report are included in Table 4-1.

Table 4-1: Desktop Sensitivity as identified by the National Screening Tool

Theme	Very High Sensitivity	High Sensitivity	Medium Sensitivity	Low Sensitivity
Agricultural			✓	
Animal Species		✓		
Aquatic Biodiversity	✓			
Archaeological and Cultural Heritage				✓
Civil Aviation		✓		
Defence			✓	
Plant Species				✓
Terrestrial Biodiversity	✓			

4.3 Additional Desktop Sensitivity Assessment

In addition, a desktop assessment of the site sensitivity has been undertaken (refer to Figure 4-3 to Figure 4-8) and the following should be noted:

- The site occurs within Zone 1: Urban development Zone and Zone 2: High Control Zone within the Urban Development Zone (UDZ) in terms of the Gauteng Provincial Environmental Management Framework (GPEMF).
- According to Gauteng Conservation (C-Plan), part of the site is affected by an Ecological Support Area (ESA).

- The site does not fall within a National Protected Area Expansion Strategy Focus Area nor Gauteng Protected Area Expansion Priority Area;
- The site is not declared as a Protected Area nor does it occur in close proximity to any Protected Areas;
- According to the Gauteng Agricultural Potential Atlas Version 4 (GAPA IV), the site is indicated as ‘moderate’ and, therefore, does not have high Agricultural potential.
The site is not protected in terms of any international convention.
- According to the National Wetland Map version 5 (NWM5) as presented by SANBI, one wetland area occurs on site. In addition, according to the National Freshwater Ecosystem Priority Areas (NFEPA) Rivers layer, a river also occurs on site.
- The site is not zoned for conservation or public open space.
- The site does not fall within an Important Bird Area (IBA).
- From a desktop perspective, the site falls within the original extent of Egoli Granite Grassland which is a threatened ecosystem type in terms of the National Environmental Management Act: Biodiversity Act (Act No. 10 of 2004).

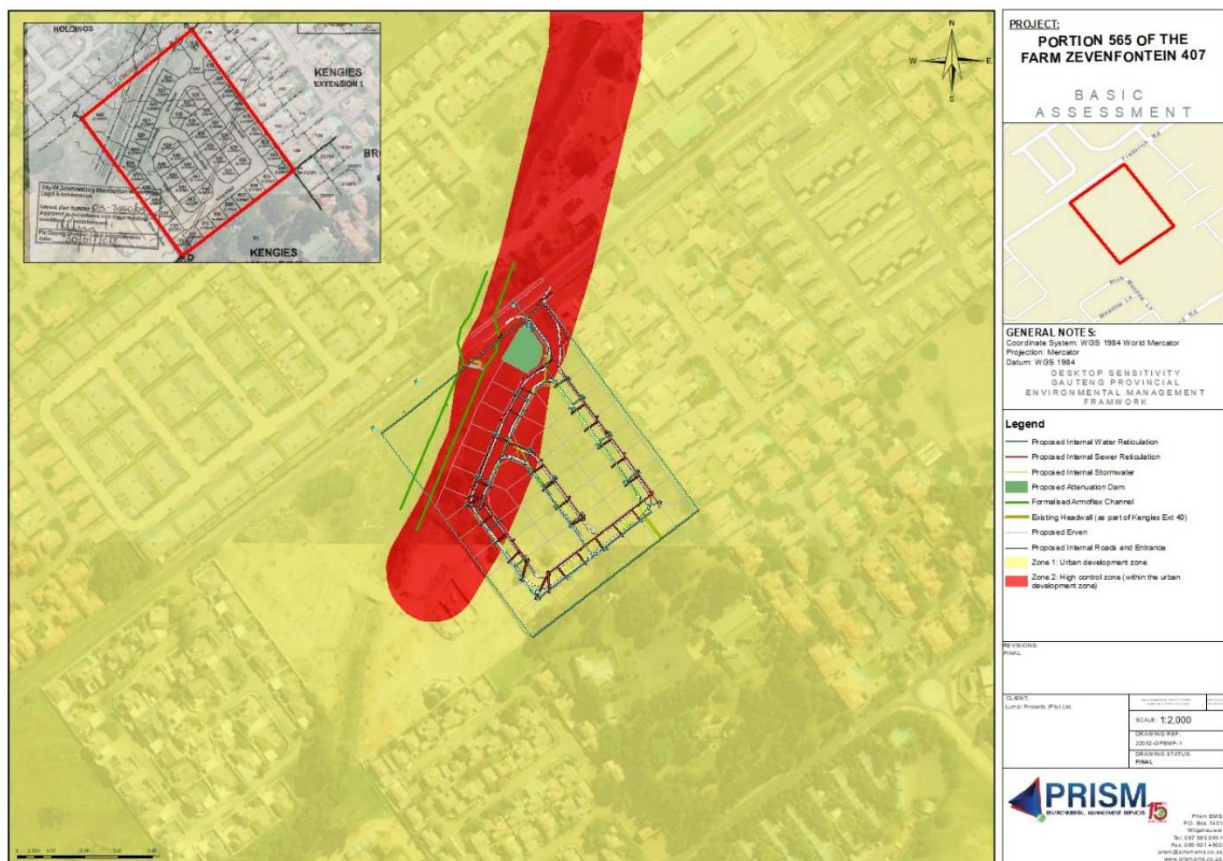


Figure 4-3: GPEMF



Figure 4-4: C-Plan

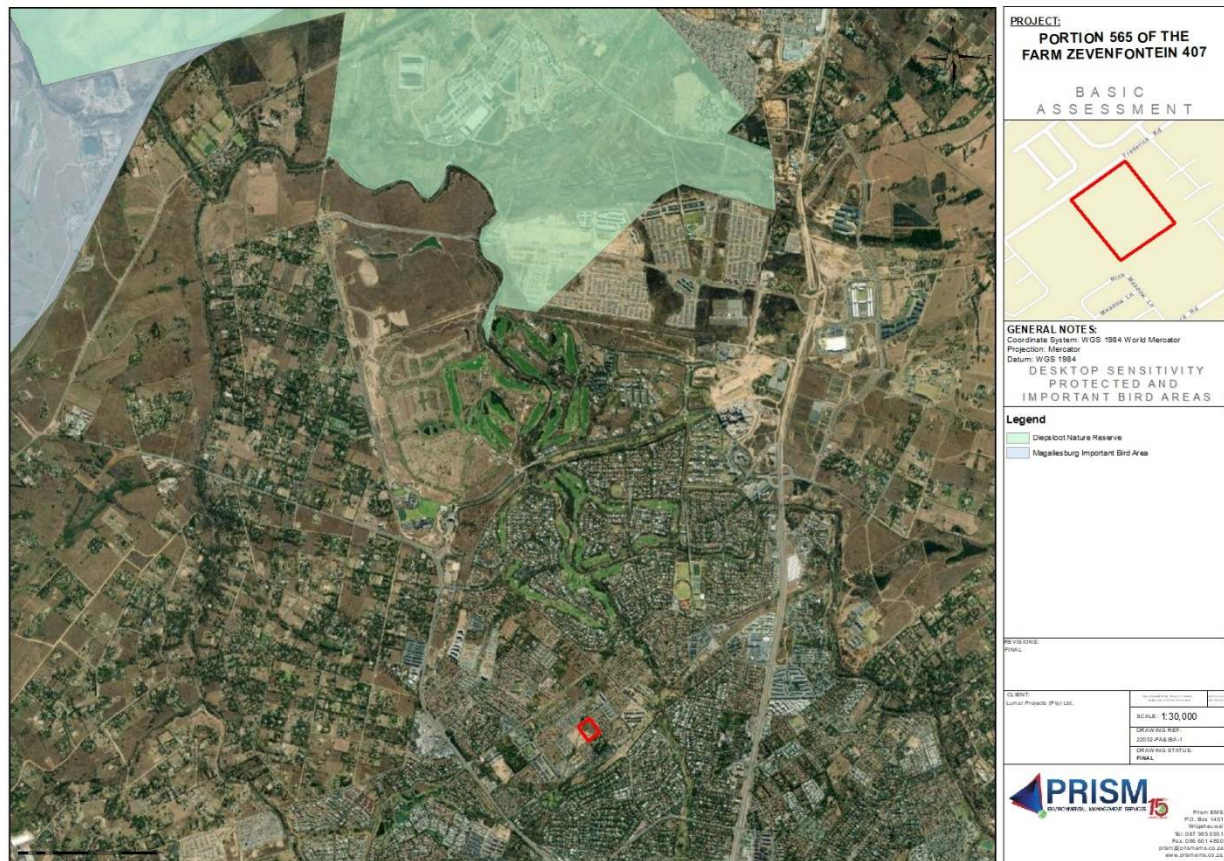


Figure 4-5: Protected Areas and Important Bird Areas



Figure 4-6: Surface Water

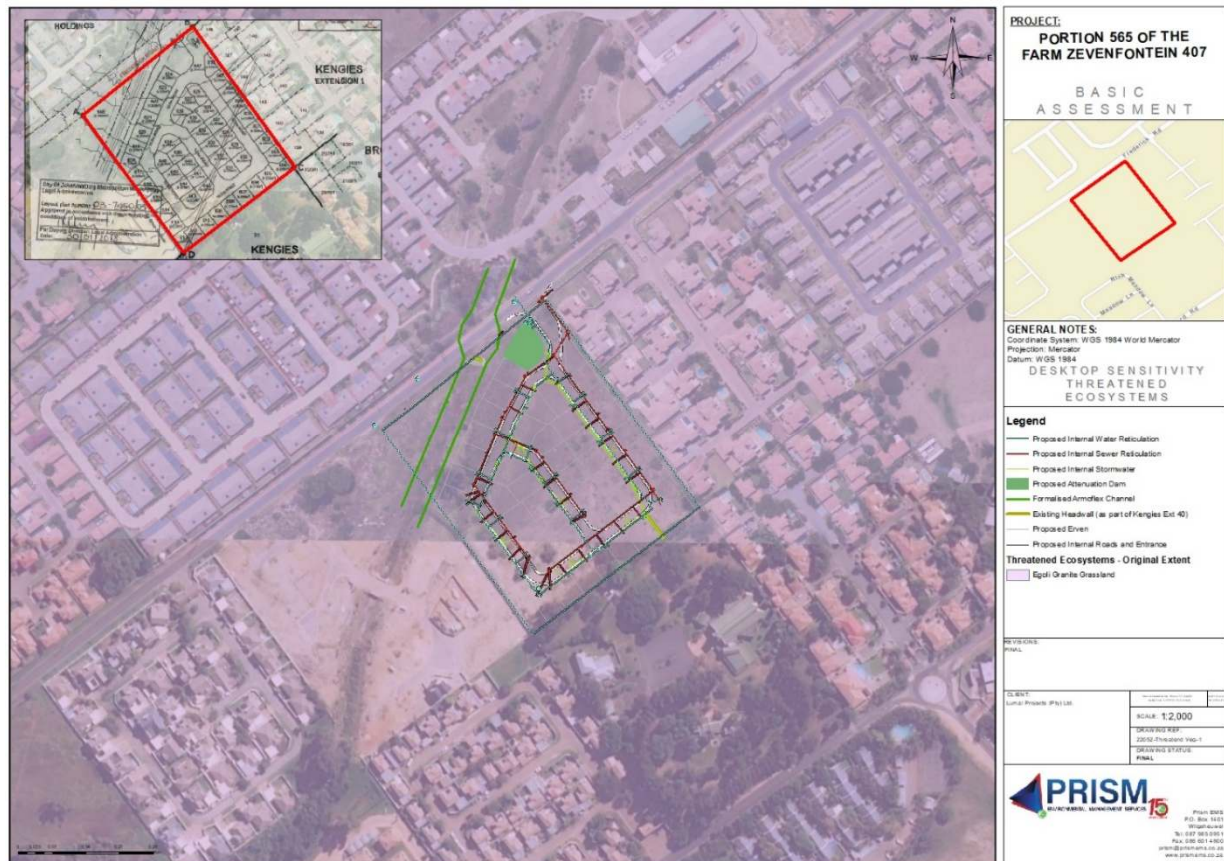


Figure 4-7: Threatened Ecosystems



Figure 4-8: GAPA

4.4 Other Available and Relevant Information

4.4.1 The Report on Best Management Practices for Stormwater Management and Erosion Prevention and Sediment Control

Important additional information that was considered relates to management of stormwater in the Kengies/Broadacres area. In order to better understand the current status of the site and the surrounding areas, a review of “*The Report on Best Management Practices for Stormwater Management and Erosion Prevention and Sediment Control*” by Triple 3 Engineering Solutions (Pty) Ltd (2008) was undertaken.

The report indicates that due to numerous issues in the area related to stormwater as well as the severely disturbed and in some areas, destroyed wetlands, it was decided to utilize environmentally sensitive canalization to manage stormwater. The design aimed to:

- Maintain as accurately as possible natural water infiltration and flows
- Use water sensitive urban design principals
- Use best practice urban stormwater quality and quantity management
- Address temporary and permanent erosion prevention, sediment control and control of other development activities that can cause pollution

As part of the above process, the following approvals were obtained:

- Local Authority Concept and JRA Approval
 - The proposed stormwater canalization was presented to City of Johannesburg and Johannesburg Roads Agency (JRA) and was accepted as a solution to the stormwater issues in the area. Construction drawings was subsequently submitted and approved by the JRA.
- Water Use Licence Application (WULA)
 - The necessary Water Use License (WUL) was issued (during May 2012 and updated during December 2020) for the construction and related work in terms of the wetland and regional stormwater management system for both Kengies Ext 35 and 40.
- Gauteng Department of Agriculture and Rural Development (GDARD)
 - It was decided that each township will obtain GDARD approval for their section of the work. This has been undertaken and all only section of the system requiring canalization is Kengies Ext 35 (this project).

The regional channel layout for the Kengies area is provided in Figure 4-9 and is followed by details of the armorflex using for the canalization as well as a photograph from an adjacent property which utilized this technology (Figure 4-10 and Figure 4-11).

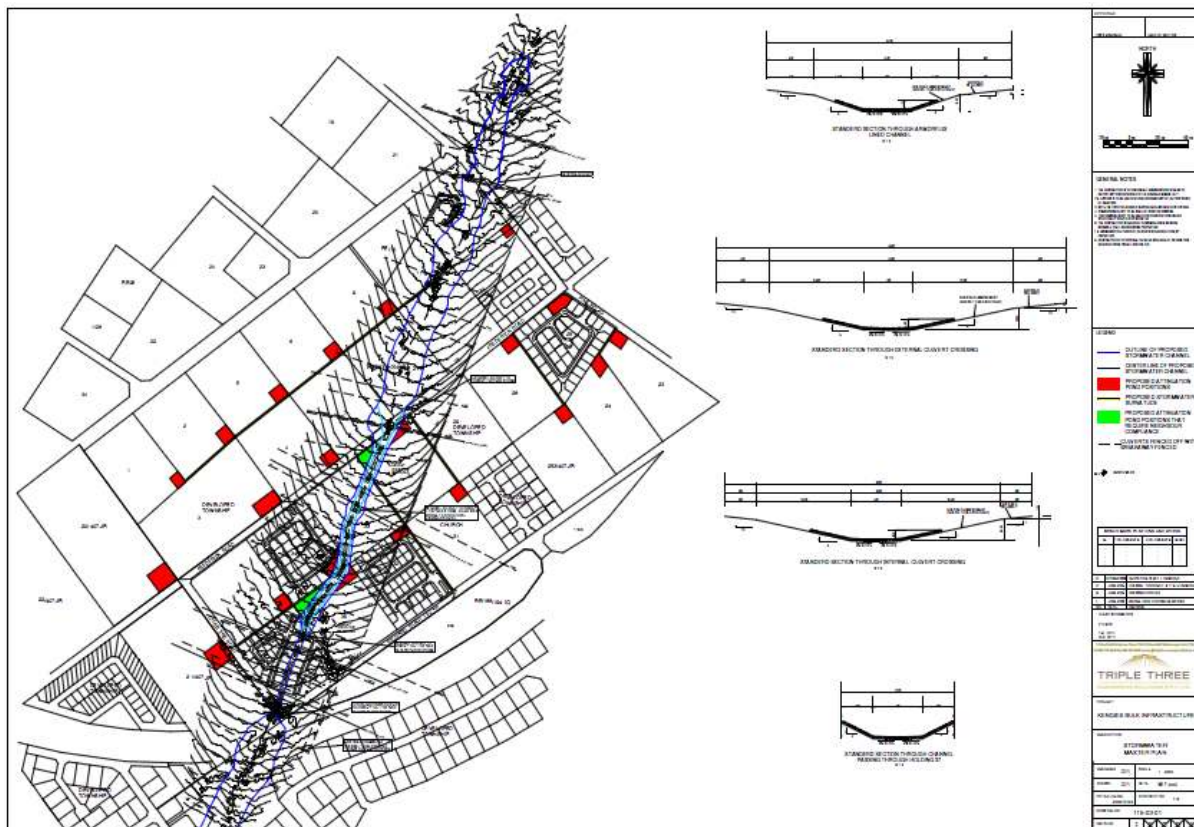


Figure 4-9: Kengies Regional Channel Layout (Triple 3 Engineering, 2008)

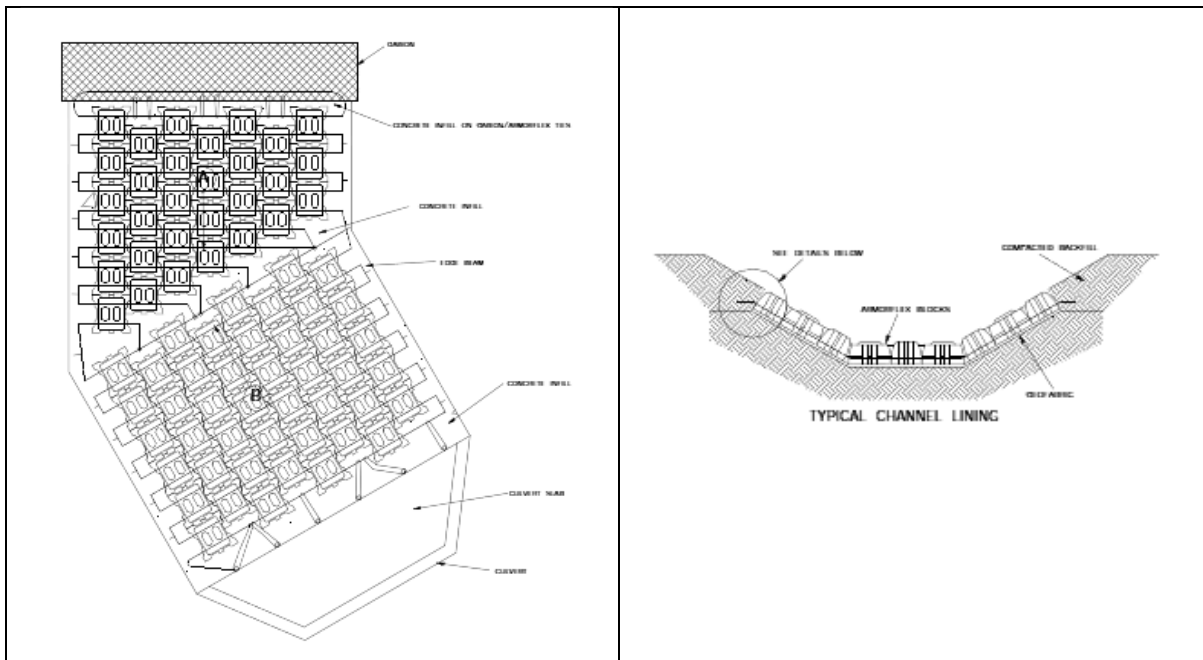


Figure 4-10: Armoflex plan and typical channel lining



Figure 4-11: Photograph of armoflex channel on adjacent property

4.4.2 Water Use License for Kengies Extension 35 and 40

The Water Use License (WUL) for the development of Kengies Extension 40 as well as the finalisation of the bio-engineered stormwater channel on both Kengies Extension 40 and 35 was reviewed and confirmed that from the perspective of the National Water Act, 1998, the proposed bio-engineered stormwater channel has been approved on both Kengies Extension 35 and 40.

The WUL which was approved on 2 May 2012 and subsequently amended in 2020 included a number of monitoring and mitigation measures which have been included in the Environmental Management Programme (EMPr) for the development of Kengies Extension 35.

4.4.3 Environmental Authorisation for Kengies Extension 40

The Environmental Authorisation for Kengies Extension 40 dated 13 October 2008, and the subsequent amendments dated 7 June 2011, 29 July 2011 and 5 June 2019 were also reviewed. The EA Amendment dated 7 June 2011 provides requirements for the channel and indicates that the bio-engineered stormwater channel was approved on this property. Therefore, the only section of the bio-engineered stormwater channel requiring development is that on Portion 565 of the Farm Zevenfontein 407 (i.e. Kengies Extension 35).

5 SATELLITE IMAGERY ASSESSMENT

5.1 Historical Imagery

An assessment of the available historic imagery of the site was undertaken. Clear imagery was only available from September 2008 and showed the site appeared to be affected by erosion and developments in the area (Figure 5-1). A similar pattern was identified in the imagery from September 2010 (Figure 5-2).



Figure 5-1: Google Earth Imagery – September 2008



Figure 5-2: Google Earth Imagery – September 2010

Imagery from 2012 shows the development of the bio-engineered stormwater channel on the adjacent property was completed (Figure 5-3) with construction of Kengies Extension 40 commencing in 2019 (Figure 5-4).



Figure 5-3: Google Earth Imagery – December 2012



Figure 5-4: Google Earth Imagery – July 2019

5.2 Existing Status

Google Earth imagery from 2021 shows that the site occurs in an area which has been built up. High Density Residential developments occur on all sides of the proposed development except for the south (which is a plot with a church and nursery school) and the west (which is a residential development, still under construction) (Figure 5-5).



Figure 5-5: Google Earth Imagery – Current Status

5.3 Civil Aviation and Defence

The closest aviation feature to the site is Lanseria International Airport which is approximately 9km away from the site (Figure 5-6).

Google Earth imagery also suggests that the proposed development is in line with the current uses of the area.

Further, the proposed development is a two storey Residential 2 cluster development and thus will have no impact on the airport.

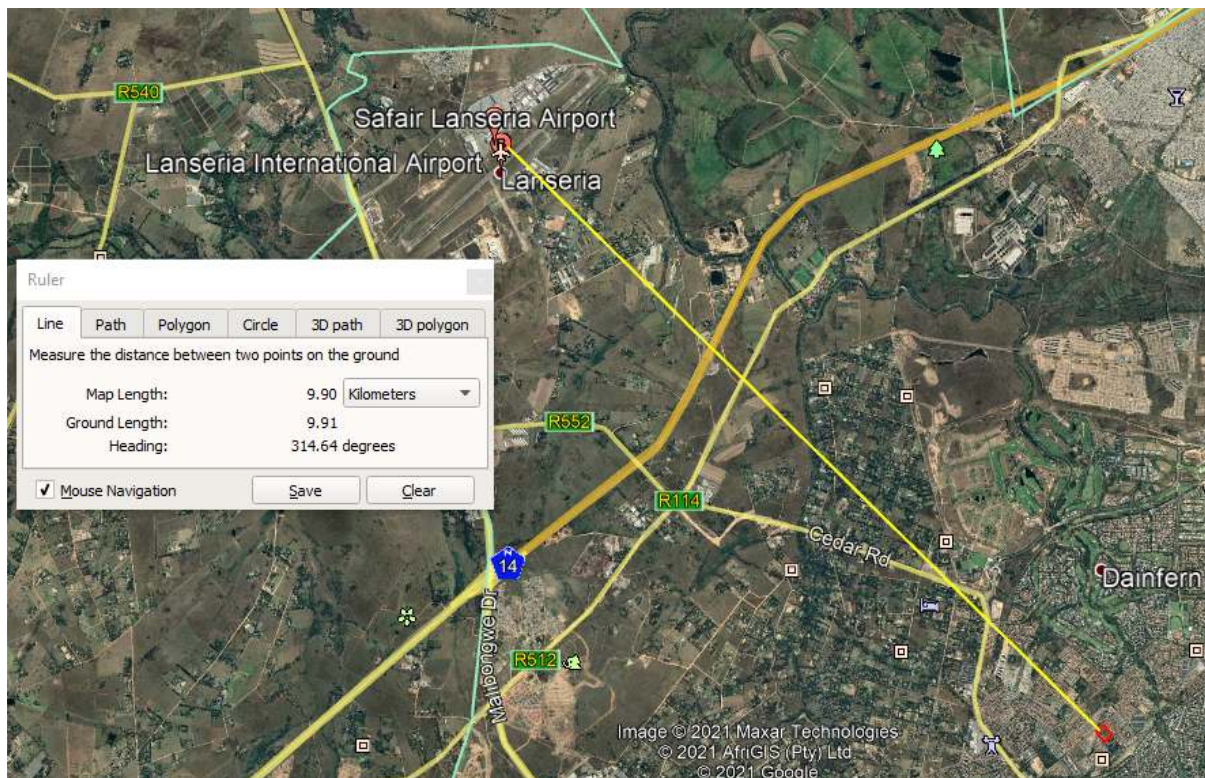


Figure 5-6: Distance to Lanseria Airport

In terms of Defence, available information shows that the closest military base is approximately 13.4 km away from the site (Figure 5-7). The proposed development is therefore not expected to have any impact from a defence perspective.

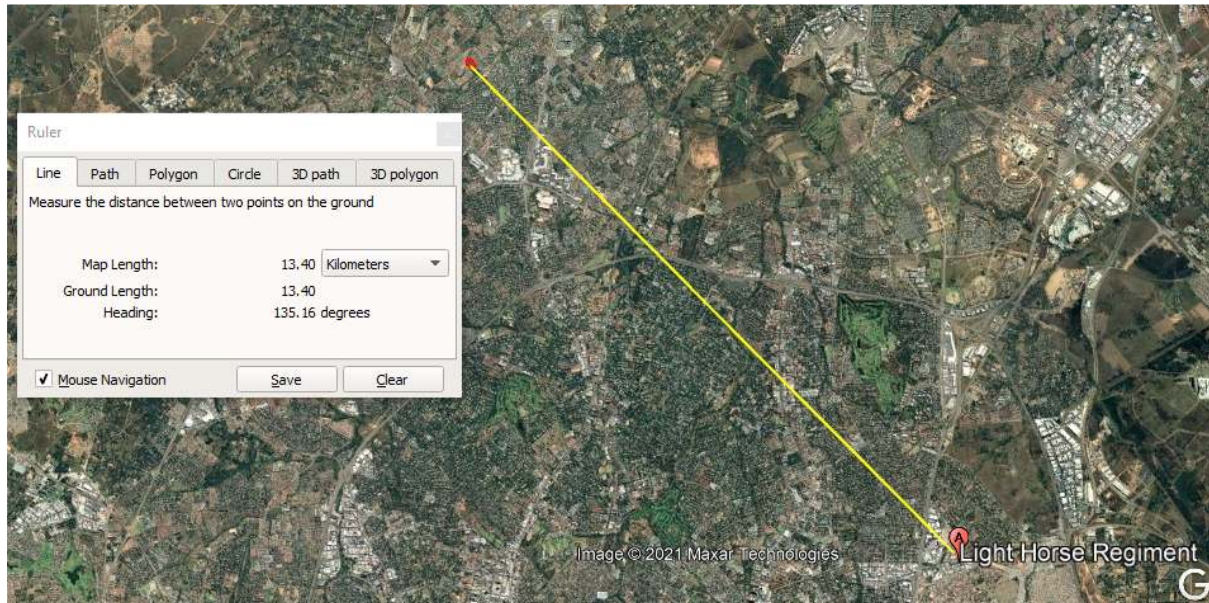


Figure 5-7: Distance to closest Military Base

6 SITE VERIFICATION

6.1 Site Conditions

A Site Verification Assessment took place on 5 May 2021 by the EAP and the following was noted:

- The site is surrounded by residential developments (mostly double storey).
- The site is degraded and there is multiple Invasive Alien Species visible.
- There is evidence of illegal dumping of building material.
- There is evidence of erosion.
- The stormwater channel on Kengies Extension 40 has been completed.
- A culvert to move stormwater across Frederik Road is in place. From there, stormwater travels through the Evergreen Lifestyle Village.
- No civil aviation facilities were observed in the vicinity of the site.
- No defense facilities were observed in the vicinity of the site.

Table 6-1 provides photographs from the site verification assessment.

Table 6-1: Site Photographs



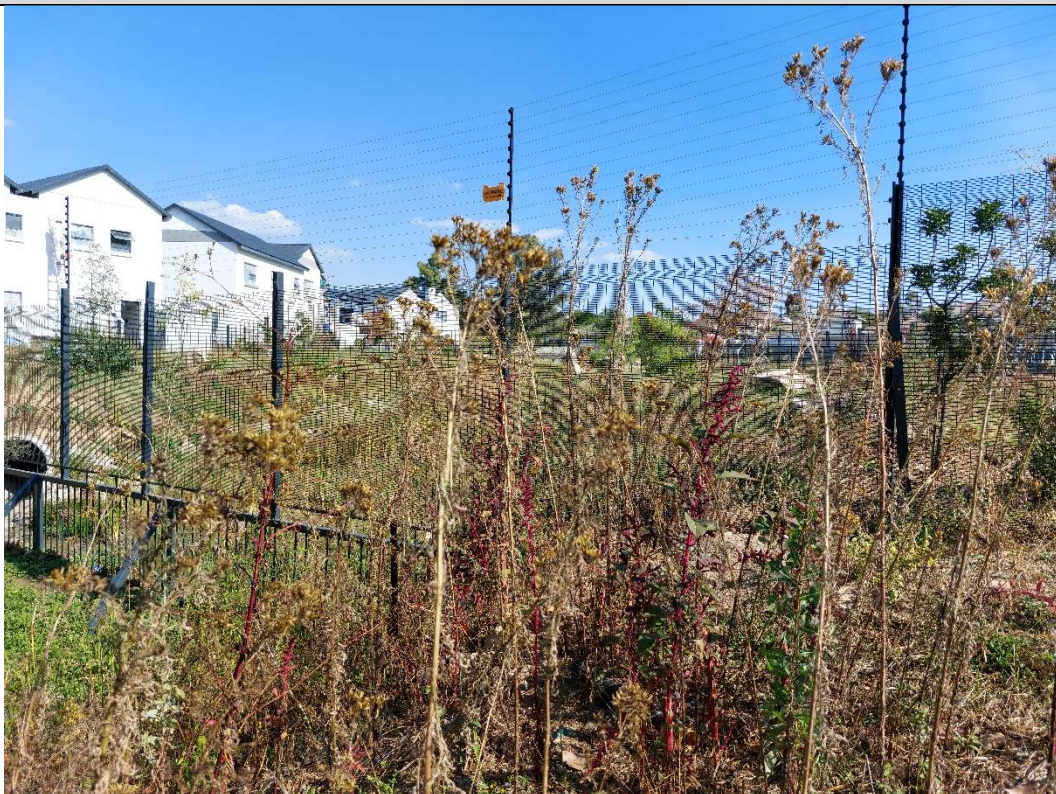
Evidence of degradation



Evidence of illegal dumping



Culvert to manage stormwater across Frederik Road



Adjacent development to the west including bio-engineered stormwater channel (see from Site)



Adjacent development to the west including bio-engineered stormwater channel (seen from in Kengies Extension 40)



Adjacent residential developments to the east

6.2 Updated Sensitivity

Based on the site verification assessment, the desktop sensitivity table (Table 4-1) was updated to better explain the current conditions. Information on the required specialist studies and general comments are also provided (

Table 6-2).

Table 6-2: Site Verification Sensitivity

Theme	Very High Sensitivity	High Sensitivity	Medium Sensitivity	Low Sensitivity	General Comments	Specialist Study Proposed by EAP
Agricultural				✓	<ul style="list-style-type: none"> Historical imagery shows that the site has not been used for agriculture. The site occurs in a residential area and the proposed development is in line with this use as well as the requirements of the COJ 2040 Spatial Development Framework (SDF) and Region A SDF. 	<ul style="list-style-type: none"> None
Animal Species				✓	<ul style="list-style-type: none"> From a desktop perspective, part of the site occurs within the Original extent of a threatened ecosystem, Ecological Support Area (ESA) and Zone 2 of the GPEMF. 	<ul style="list-style-type: none"> Although from a desktop perspective, some sensitivity is possible, the site appears degraded.
Plant Species				✓	<ul style="list-style-type: none"> The site verification assessment however indicated that the site has low sensitivity as it is degraded. 	<ul style="list-style-type: none"> However, to confirm this, a Baseline Ecological Habitat Assessment report which looked at Flora, Avifauna, Mammals and Herpetofauna was undertaken and is included in the Basic Assessment Report.
Terrestrial Biodiversity				✓	<ul style="list-style-type: none"> I&APs raised concerns regarding impacts to Cane Rats. 	
Aquatic Biodiversity				✓	<ul style="list-style-type: none"> From a desktop perspective, the site is affected by a wetland and river. The site verification assessment however indicated that the site has low sensitivity as it is degraded. 	<ul style="list-style-type: none"> Although from a desktop perspective, some sensitivity is possible, the site appears degraded. However, to confirm this, a Wetland Verification assessment

						was undertaken and is included in the Basic Assessment Report.
Archaeological and Cultural Heritage				✓	<ul style="list-style-type: none"> No evidence of archaeological or palaeontological sensitivity from a desktop or site perspective. 	<ul style="list-style-type: none"> Due to the requirements of the National Heritage Resources Act, 1999, a Phase 1 Heritage Impact Assessment has been undertaken and is included in the Basic Assessment Report.
Civil Aviation				✓	<ul style="list-style-type: none"> The closest airport is 9.9km The site is in an existing residential area. No impacts to civil aviation are expected. 	<ul style="list-style-type: none"> None
Defence				✓	<ul style="list-style-type: none"> The closest military base is 13.4km away. The site is in an existing residential area. No impacts to defence facilities are expected. 	<ul style="list-style-type: none"> None

7 CONCLUSION

Based on the findings of this verification assessment, the following specialist studies have been undertaken and are included in the Basic Assessment Report:

- Baseline Ecological Habitat Assessment;
- Wetland Verification; and
- Heritage Impact Assessment.

No further sensitivities were identified that required specific specialist assessment and thus no further studies are deemed necessary.

8 ANNEXURES

8.1 National Screening Tool Report

**SCREENING REPORT FOR AN ENVIRONMENTAL AUTHORIZATION AS
REQUIRED BY THE 2014 EIA REGULATIONS – PROPOSED SITE
ENVIRONMENTAL SENSITIVITY**

EIA Reference number:

Project name: 22052 - Kengies Ext 34


Project title: Basic Assessment Report

Date screening report generated: 19/03/2021 09:09:19

Applicant: Lumal Projects (Pty) Ltd

Compiler: Prism EMS

Compiler signature:



Application Category: Transformation of land | Indigenous vegetation

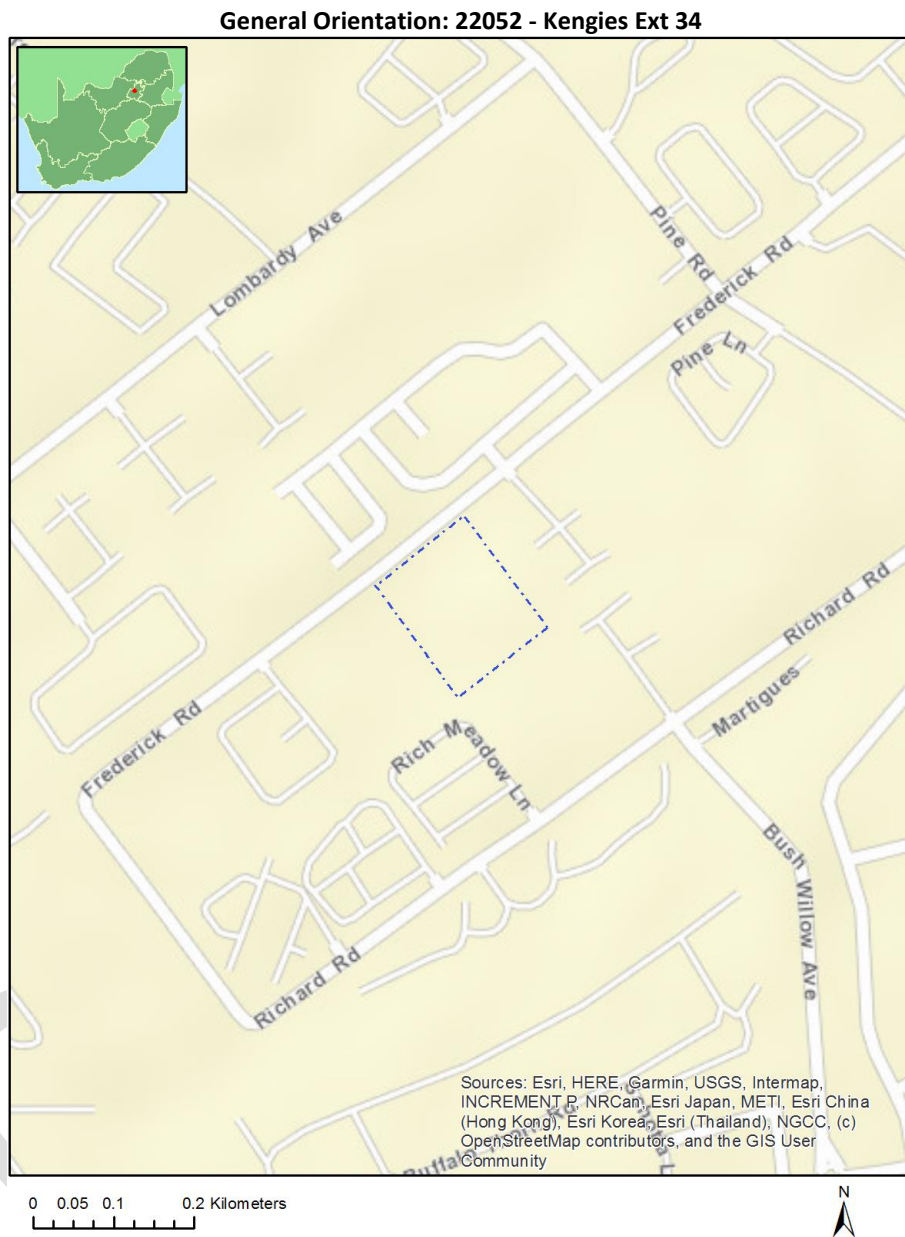


Table of Contents

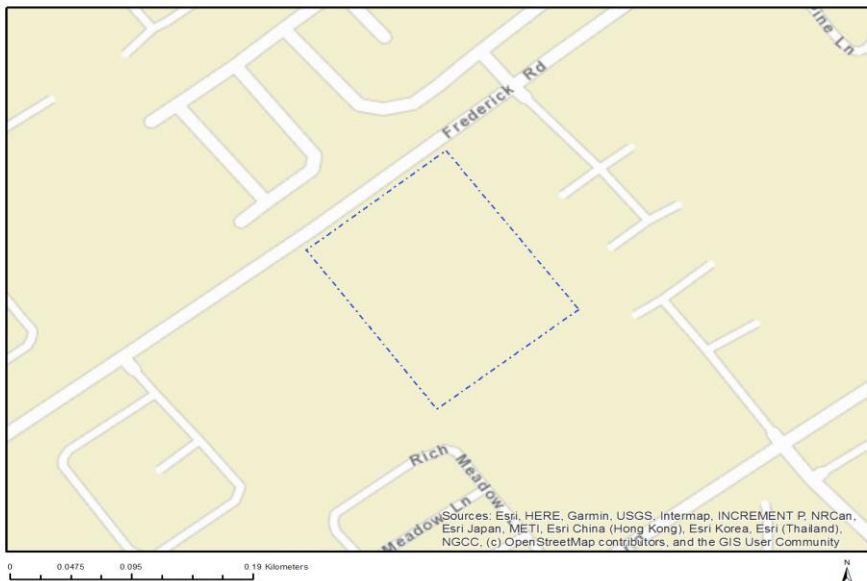
Proposed Project Location	3
Orientation map 1: General location	3
Map of proposed site and relevant area(s)	4
Cadastral details of the proposed site	4
Wind and Solar developments with an approved Environmental Authorisation or applications under consideration within 30 km of the proposed area	4
Environmental Management Frameworks relevant to the application	5
Environmental screening results and assessment outcomes	5
Relevant development incentives, restrictions, exclusions or prohibitions	5
Map indicating proposed development footprint within applicable development incentive, restriction, exclusion or prohibition zones	6
Proposed Development Area Environmental Sensitivity	6
Specialist assessments identified	7
Results of the environmental sensitivity of the proposed area	9
MAP OF RELATIVE AGRICULTURE THEME SENSITIVITY	9
MAP OF RELATIVE ANIMAL SPECIES THEME SENSITIVITY	10
MAP OF RELATIVE AQUATIC BIODIVERSITY THEME SENSITIVITY	11
MAP OF RELATIVE ARCHAEOLOGICAL AND CULTURAL HERITAGE THEME SENSITIVITY	12
MAP OF RELATIVE CIVIL AVIATION THEME SENSITIVITY	13
MAP OF RELATIVE DEFENCE THEME SENSITIVITY	14
MAP OF RELATIVE PLANT SPECIES THEME SENSITIVITY	15
MAP OF RELATIVE TERRESTRIAL BIODIVERSITY THEME SENSITIVITY	16

Proposed Project Location

Orientation map 1: General location



Map of proposed site and relevant area(s)



Cadastral details of the proposed site

Property details:

No	Farm Name	Farm/ Erf No	Portion	Latitude	Longitude	Property Type
1	ZEVENFONTEIN	407	0	25°59'7.11S	28°0'48.75E	Farm
2	ZEVENFONTEIN	407	565	26°0'0.42S	27°59'53.61E	Farm Portion

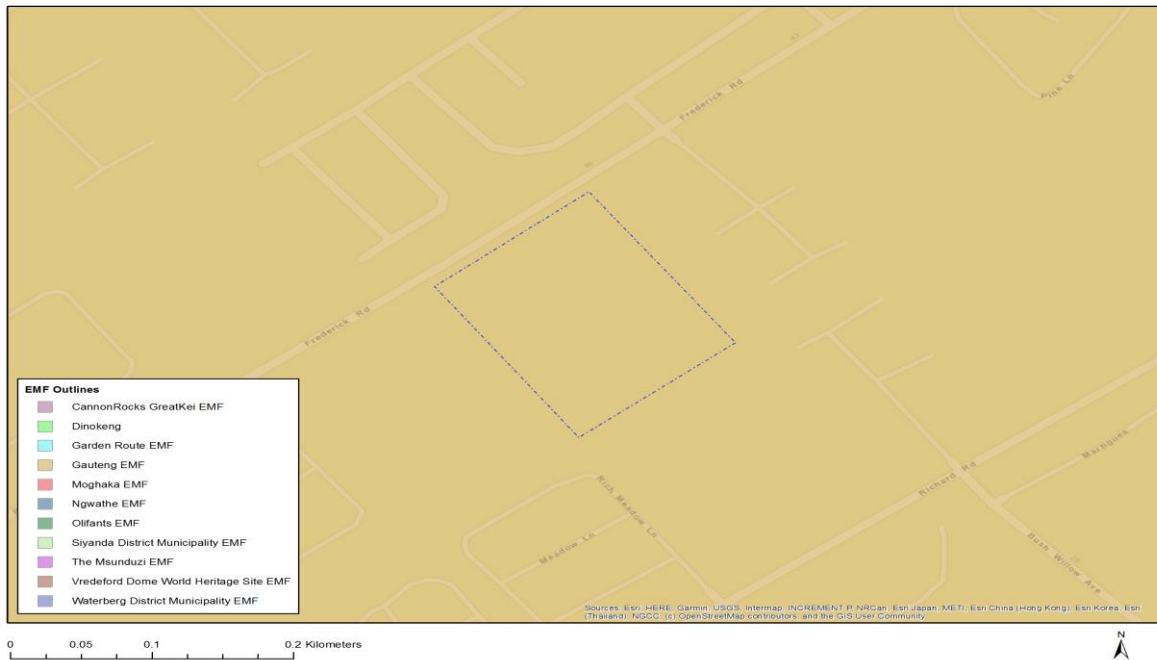
Development footprint¹ vertices:
No development footprint(s) specified.

Wind and Solar developments with an approved Environmental Authorisation or applications under consideration within 30 km of the proposed area

No	EIA Reference No	Classification	Status of application	Distance from proposed area (km)
1	12/12/20/2530	Solar PV	Approved	27.4
2	12/12/20/2551	Solar PV	Approved	28.8
3	12/12/20/2539	Solar PV	Approved	29.3

¹ "development footprint", means the area within the site on which the development will take place and includes all ancillary developments for example roads, power lines, boundary walls, paving etc. which require vegetation clearance or which will be disturbed and for which the application has been submitted.

Environmental Management Frameworks relevant to the application



Environmental Management Framework	LINK
Gauteng EMF	https://screening.environment.gov.za/ScreeningDownloads/EMF/Zone_1, Zone 2, Zone 3, Zone 4, Zone 5.pdf

Environmental screening results and assessment outcomes

The following sections contain a summary of any development incentives, restrictions, exclusions or prohibitions that apply to the proposed development site as well as the most environmental sensitive features on the site based on the site sensitivity screening results for the application classification that was selected. The application classification selected for this report is:

Transformation of land| Indigenous vegetation.

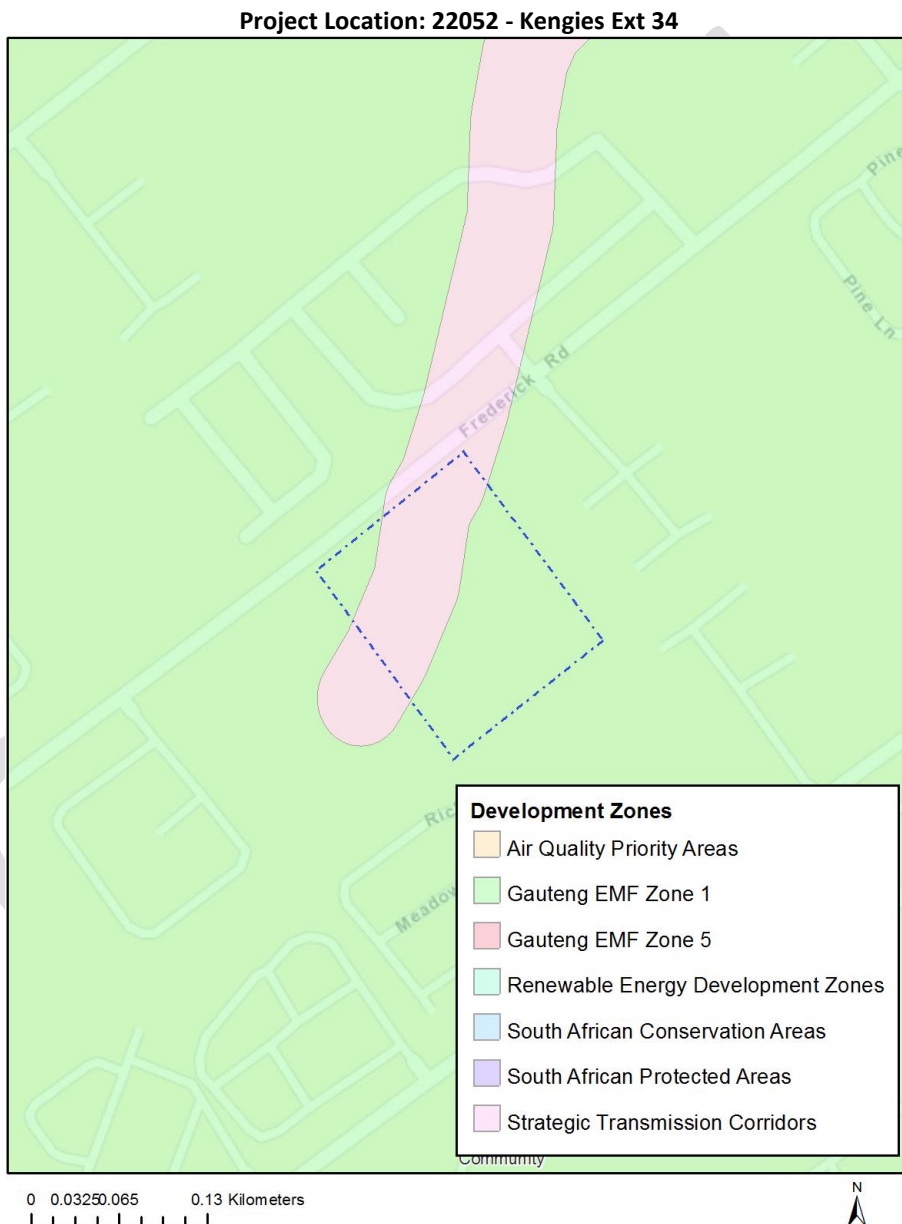
Relevant development incentives, restrictions, exclusions or prohibitions

The following development incentives, restrictions, exclusions or prohibitions and their implications that apply to this site are indicated below.

Incentive, restriction or prohibition	Implication
Strategic	https://screening.environment.gov.za/ScreeningDownloads/DevelopmentZones/GN

Transmission Corridor-Central corridor	113 16 February 2018.pdf
Gauteng EMF-Urban development zone 1	https://screening.environment.gov.za/ScreeningDownloads/DevelopmentZones/Zone_1.pdf

Map indicating proposed development footprint within applicable development incentive, restriction, exclusion or prohibition zones



Proposed Development Area Environmental Sensitivity

The following summary of the development site environmental sensitivities is identified. Only the highest environmental sensitivity is indicated. The footprint environmental sensitivities for the

proposed development footprint as identified, are indicative only and must be verified on site by a suitably qualified person before the specialist assessments identified below can be confirmed.

Theme	Very High sensitivity	High sensitivity	Medium sensitivity	Low sensitivity
Agriculture Theme			X	
Animal Species Theme		X		
Aquatic Biodiversity Theme	X			
Archaeological and Cultural Heritage Theme				X
Civil Aviation Theme		X		
Defence Theme			X	
Plant Species Theme				X
Terrestrial Biodiversity Theme	X			

Specialist assessments identified

Based on the selected classification, and the environmental sensitivities of the proposed development footprint, the following list of specialist assessments have been identified for inclusion in the assessment report. It is the responsibility of the EAP to confirm this list and to motivate in the assessment report, the reason for not including any of the identified specialist study including the provision of photographic evidence of the site situation.

N o	Specialist assessment	Assessment Protocol
1	Landscape/Visual Impact Assessment	https://screening.environment.gov.za/ScreeningDownloads/AssessmentProtocols/Gazetted_General_Requirement_Assessment_Protocols.pdf
2	Archaeological and Cultural Heritage Impact Assessment	https://screening.environment.gov.za/ScreeningDownloads/AssessmentProtocols/Gazetted_General_Requirement_Assessment_Protocols.pdf
3	Palaeontology Impact Assessment	https://screening.environment.gov.za/ScreeningDownloads/AssessmentProtocols/Gazetted_General_Requirement_Assessment_Protocols.pdf
4	Terrestrial Biodiversity Impact Assessment	https://screening.environment.gov.za/ScreeningDownloads/AssessmentProtocols/Gazetted_Terrestrial_Biodiversity_Assessment_Protocols.pdf
5	Aquatic Biodiversity Impact	https://screening.environment.gov.za/ScreeningDownloads/AssessmentProtocols/Gazetted_Aquatic_Biodiversity_Assessment_Protocols.pdf

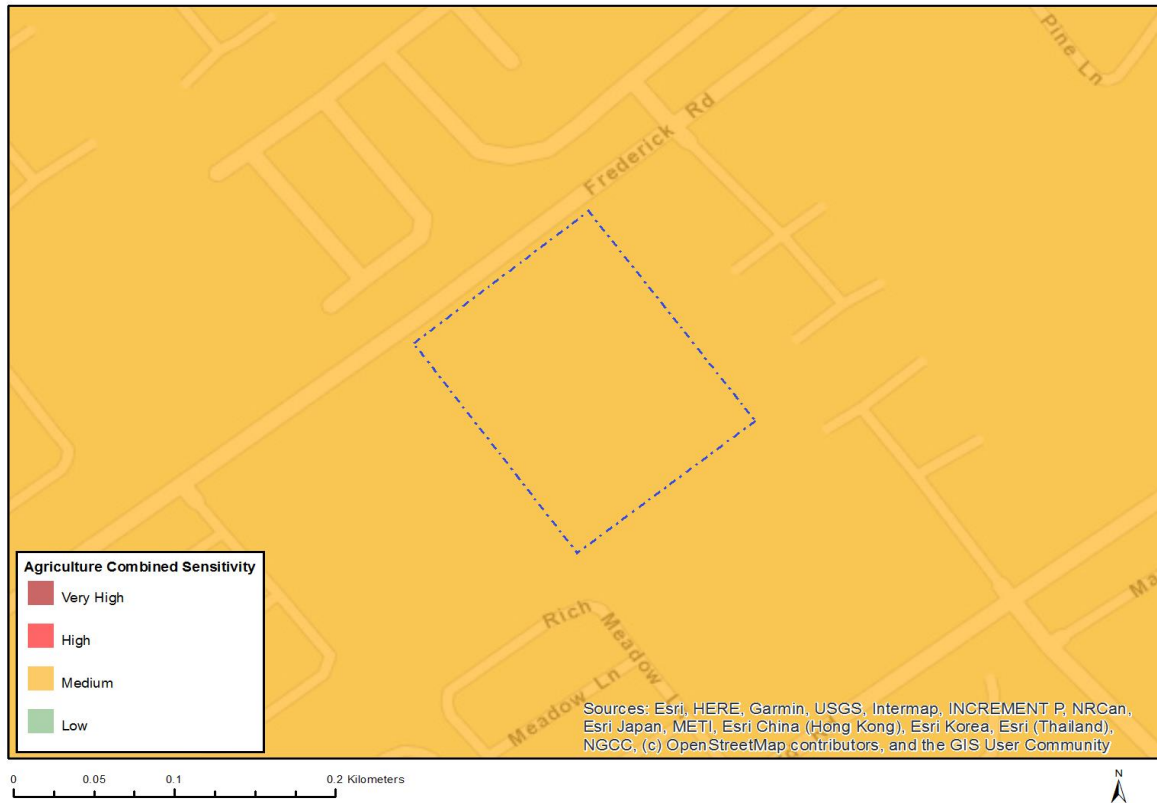
	Assessment	
6	Avian Impact Assessment	https://screening.environment.gov.za/ScreeningDownloads/AssessmentProtocols/Gazetted_Avifauna_Assessment_Protocols.pdf
7	Socio-Economic Assessment	https://screening.environment.gov.za/ScreeningDownloads/AssessmentProtocols/Gazetted_General_Requirement_Assessment_Protocols.pdf
8	Plant Species Assessment	https://screening.environment.gov.za/ScreeningDownloads/AssessmentProtocols/Gazetted_Plant_Species_Assessment_Protocols.pdf
9	Animal Species Assessment	https://screening.environment.gov.za/ScreeningDownloads/AssessmentProtocols/Gazetted_Animal_Species_Assessment_Protocols.pdf

OFFICIAL

Results of the environmental sensitivity of the proposed area.

The following section represents the results of the screening for environmental sensitivity of the proposed site for relevant environmental themes associated with the project classification. It is the duty of the EAP to ensure that the environmental themes provided by the screening tool are comprehensive and complete for the project. Refer to the disclaimer.

MAP OF RELATIVE AGRICULTURE THEME SENSITIVITY

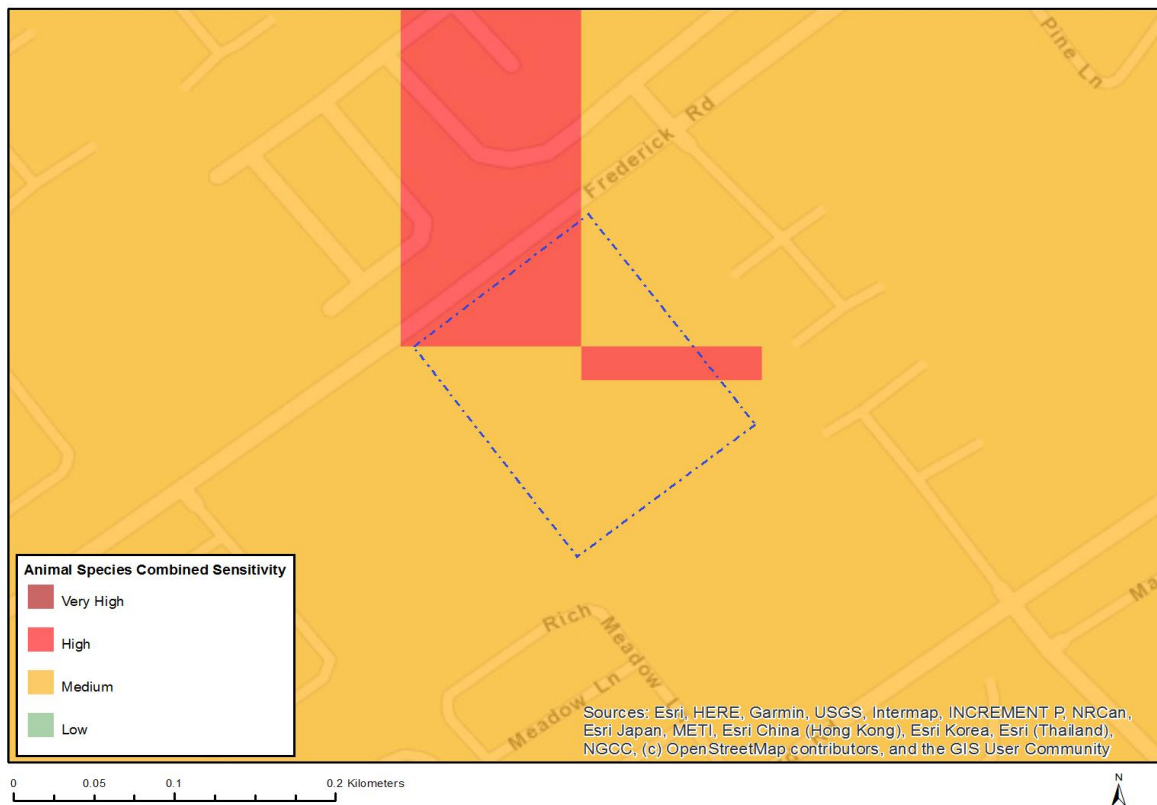


Very High sensitivity	High sensitivity	Medium sensitivity	Low sensitivity
		X	

Sensitivity Features:

Sensitivity	Feature(s)
Medium	Land capability;06. Low-Moderate/07. Low-Moderate/08. Moderate

MAP OF RELATIVE ANIMAL SPECIES THEME SENSITIVITY



Where only a sensitive plant unique number or sensitive animal unique number is provided in the screening report and an assessment is required, the environmental assessment practitioner (EAP) or specialist is required to email SANBI at eiadatarequests@sanbi.org.za listing all sensitive species with their unique identifiers for which information is required. The name has been withheld as the species may be prone to illegal harvesting and must be protected. SANBI will release the actual species name after the details of the EAP or specialist have been documented.

Very High sensitivity	High sensitivity	Medium sensitivity	Low sensitivity
	X		

Sensitivity Features:

Sensitivity	Feature(s)
High	Aves-Tyto capensis
Medium	Invertebrate-Clonia uvarovi
Medium	Mammalia-Chrysospalax villosus
Medium	Sensitive species 7
Medium	Insecta-Aloeides dentatis dentatis
Medium	Aves-Tyto capensis

MAP OF RELATIVE AQUATIC BIODIVERSITY THEME SENSITIVITY

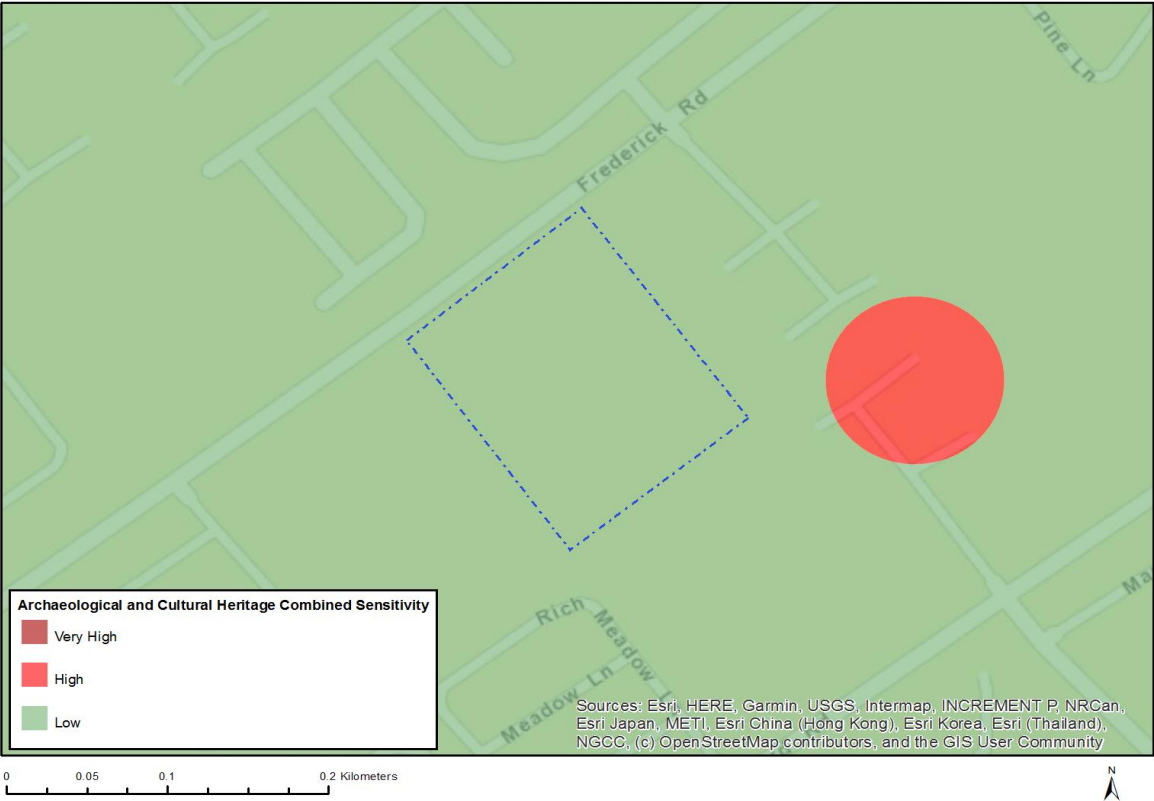


Very High sensitivity	High sensitivity	Medium sensitivity	Low sensitivity
X			

Sensitivity Features:

Sensitivity	Feature(s)
Low	Low sensitivity
Very High	Wetlands and Estuaries

MAP OF RELATIVE ARCHAEOLOGICAL AND CULTURAL HERITAGE THEME SENSITIVITY

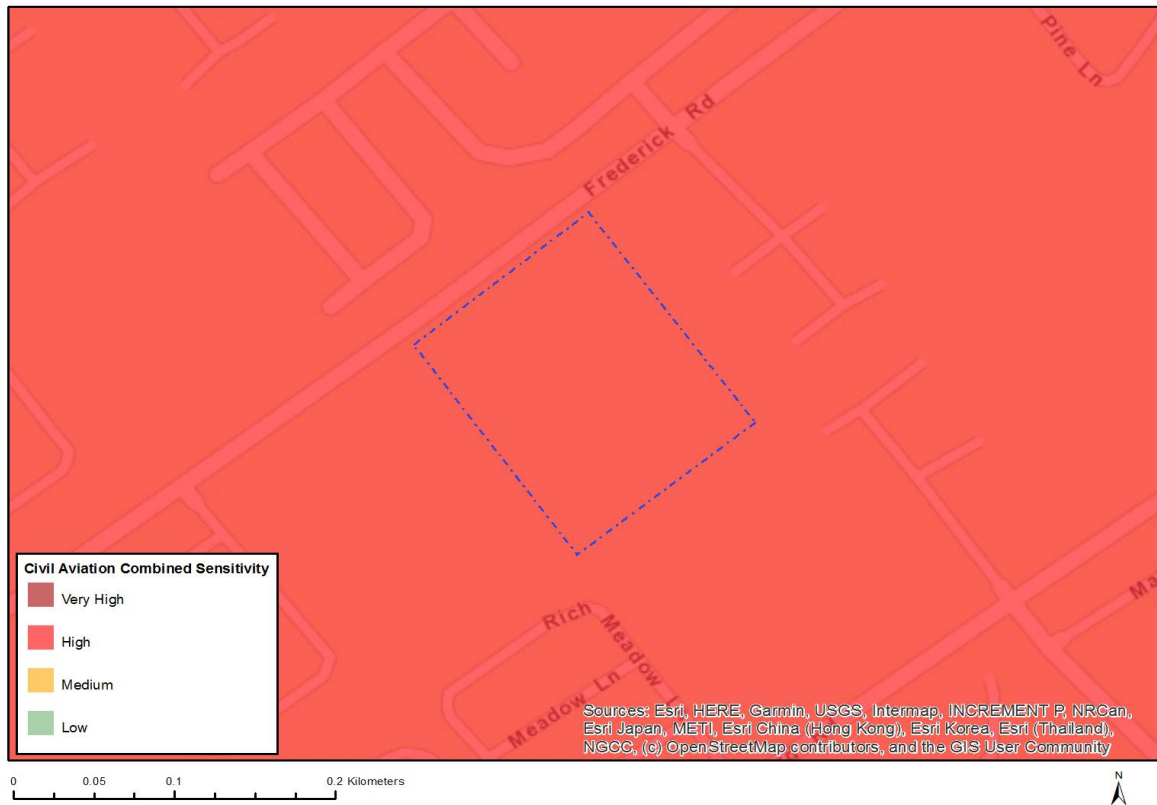


Very High sensitivity	High sensitivity	Medium sensitivity	Low sensitivity
			X

Sensitivity Features:

Sensitivity	Feature(s)
Low	Low sensitivity

MAP OF RELATIVE CIVIL AVIATION THEME SENSITIVITY

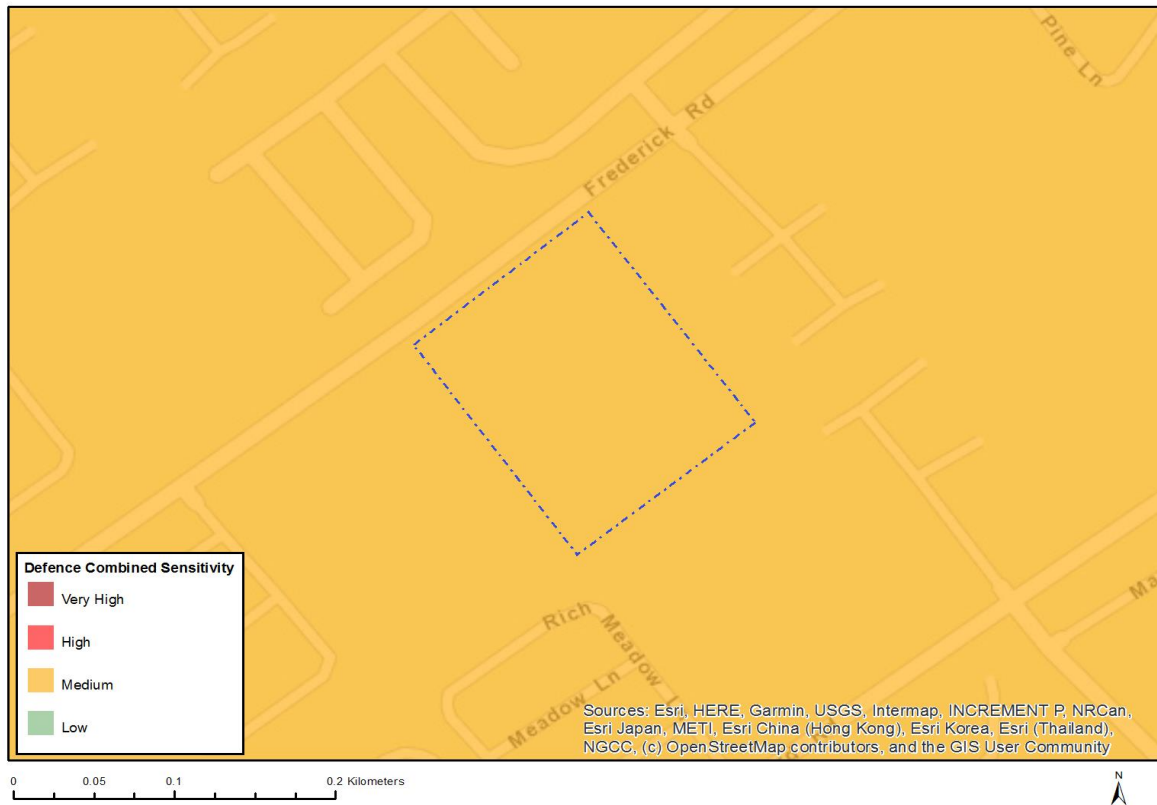


Very High sensitivity	High sensitivity	Medium sensitivity	Low sensitivity
	X		

Sensitivity Features:

Sensitivity	Feature(s)
High	Between 8 and 15 km from a major civil aviation aerodrome
Medium	Between 15 and 35 km from a civil aviation radar
Medium	Between 8 and 15 km of other civil aviation aerodrome

MAP OF RELATIVE DEFENCE THEME SENSITIVITY

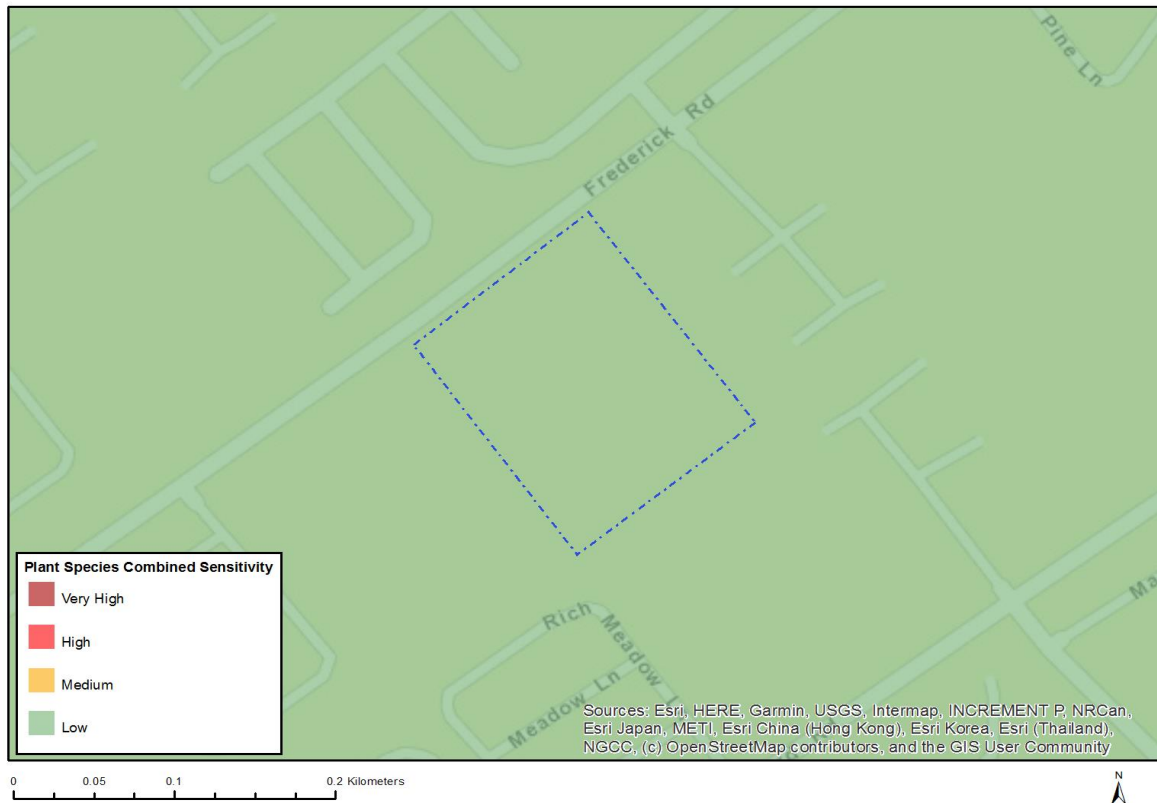


Very High sensitivity	High sensitivity	Medium sensitivity	Low sensitivity
		X	

Sensitivity Features:

Sensitivity	Feature(s)
Medium	Military and Defence Site

MAP OF RELATIVE PLANT SPECIES THEME SENSITIVITY



Where only a sensitive plant unique number or sensitive animal unique number is provided in the screening report and an assessment is required, the environmental assessment practitioner (EAP) or specialist is required to email SANBI at eiadatarequests@sanbi.org.za listing all sensitive species with their unique identifiers for which information is required. The name has been withheld as the species may be prone to illegal harvesting and must be protected. SANBI will release the actual species name after the details of the EAP or specialist have been documented.

Very High sensitivity	High sensitivity	Medium sensitivity	Low sensitivity
			X

Sensitivity Features:

Sensitivity	Feature(s)
Low	Low Sensitivity

MAP OF RELATIVE TERRESTRIAL BIODIVERSITY THEME SENSITIVITY



Very High sensitivity	High sensitivity	Medium sensitivity	Low sensitivity
X			

Sensitivity Features:

Sensitivity	Feature(s)
Very High	Ecological Support Area
Very High	Endangered ecosystem