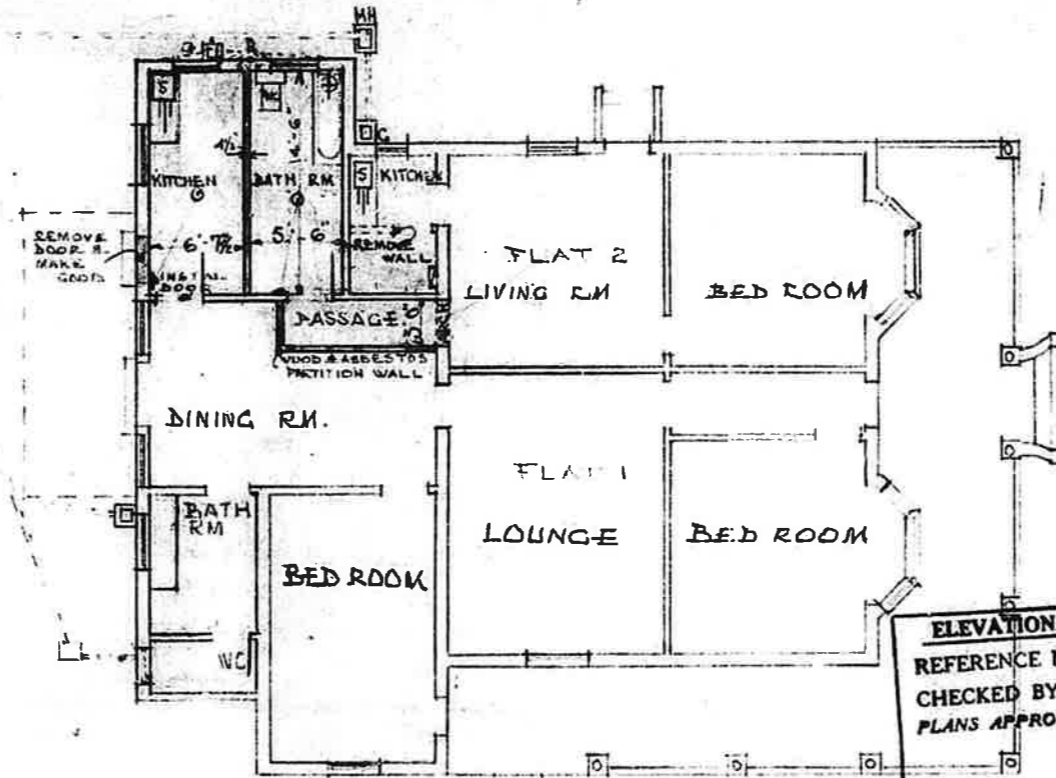


PLAN OF PROPOSED CONVERSION OF PORTION OF KITCHEN TO BATHROOM/WC & BATHROOM/WC TO KITCHEN AT 29 THIRD AVE. DURBAN FOR MR J. BENALI SCALE 1/8"



**ELEVATIONAL CONTROL**  
 REFERENCE No. 29-5-63  
 CHECKED BY *Raj*  
 PLANS APPROVED SUBJECT TO

- LIGHT
- ⊕ WATER HEATER
- FLUSH TYPE SWITCHES
- STOVE SWITCH

27. 5. 63  
 P.A. required when  
 indicated in plan.

SITE SCALE 1/40"

