

Kotulo Tsatsi Energy PV1, Northern Cape

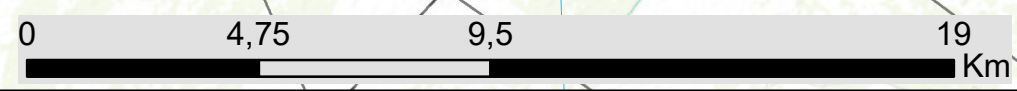
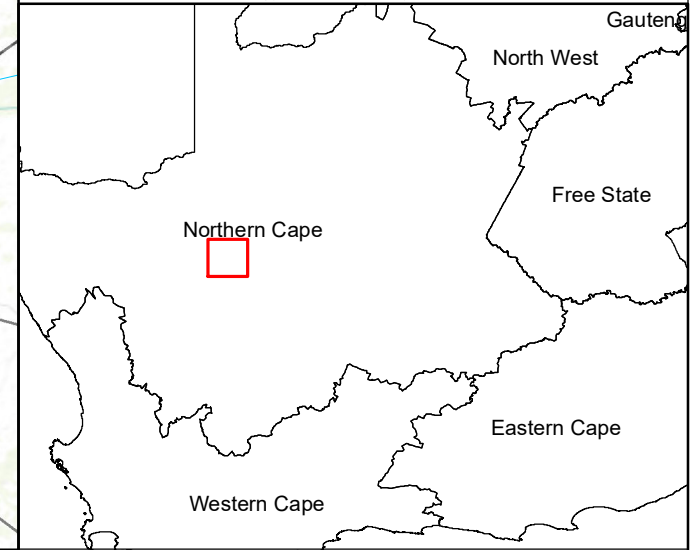
Locality Map

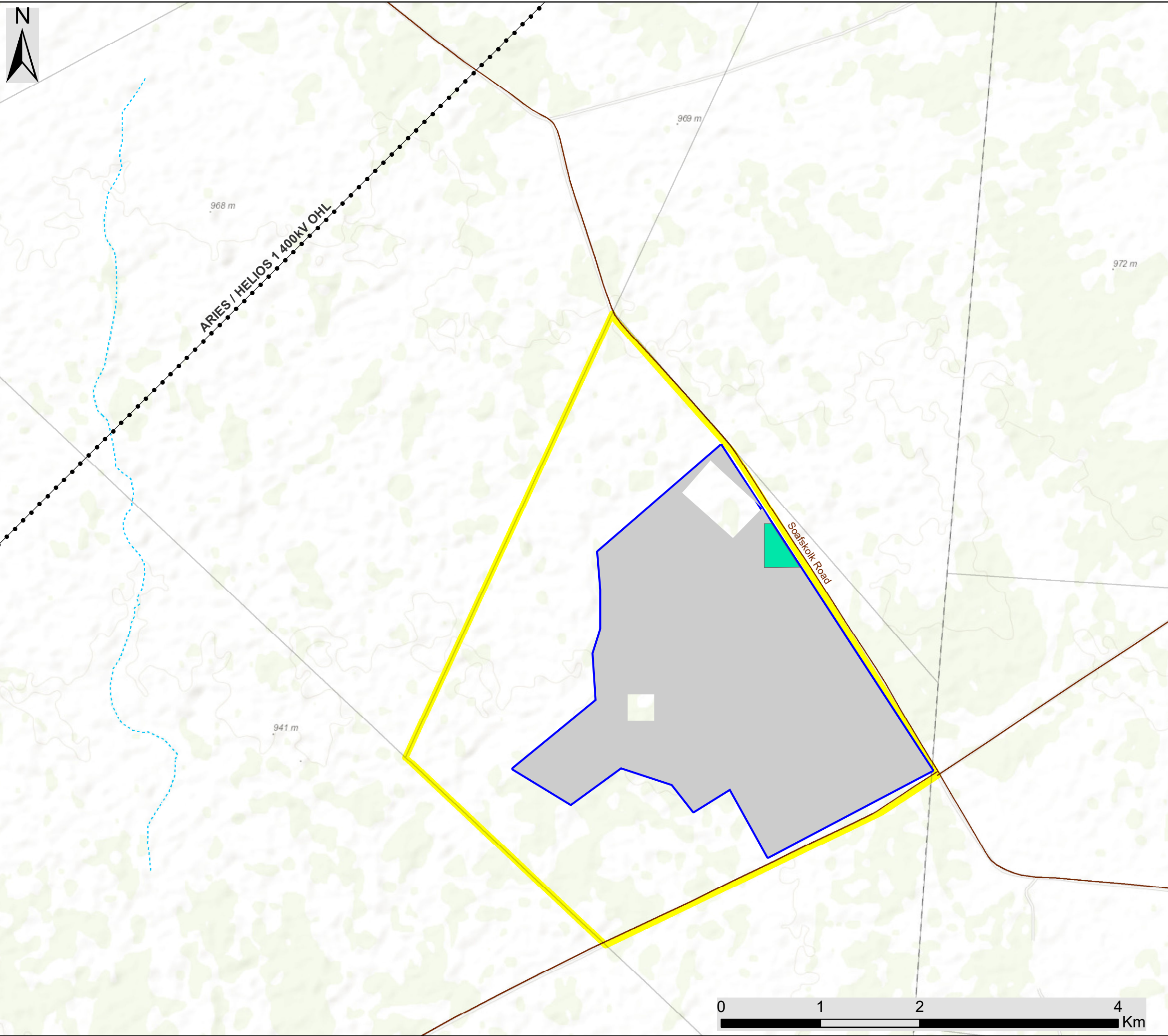
Legend

- Eskom substation
- Existing Power Line
- Regional road
- Main road
- Railway
- Perennial river
- Non-perennial river
- Project Site
- Development Area
- Farm portions



Scale: 1: 155 000
 Projection: WGS_1984
 Map Ref: Kotulo Tsatsi Energy PV1 - Locality & Auth Infra





Kotulo Tsatsi Energy PV1, Northern Cape

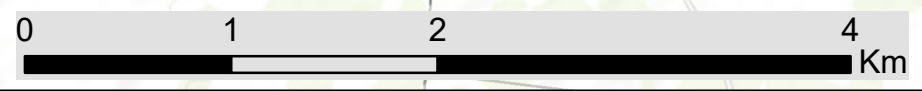
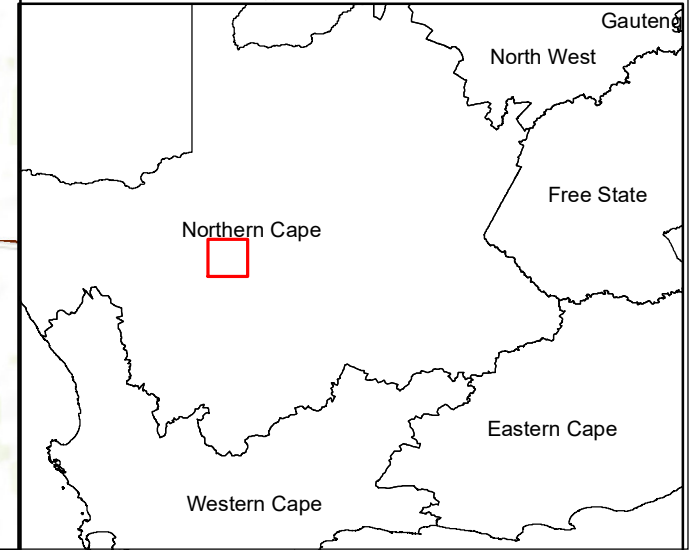
Layout Map

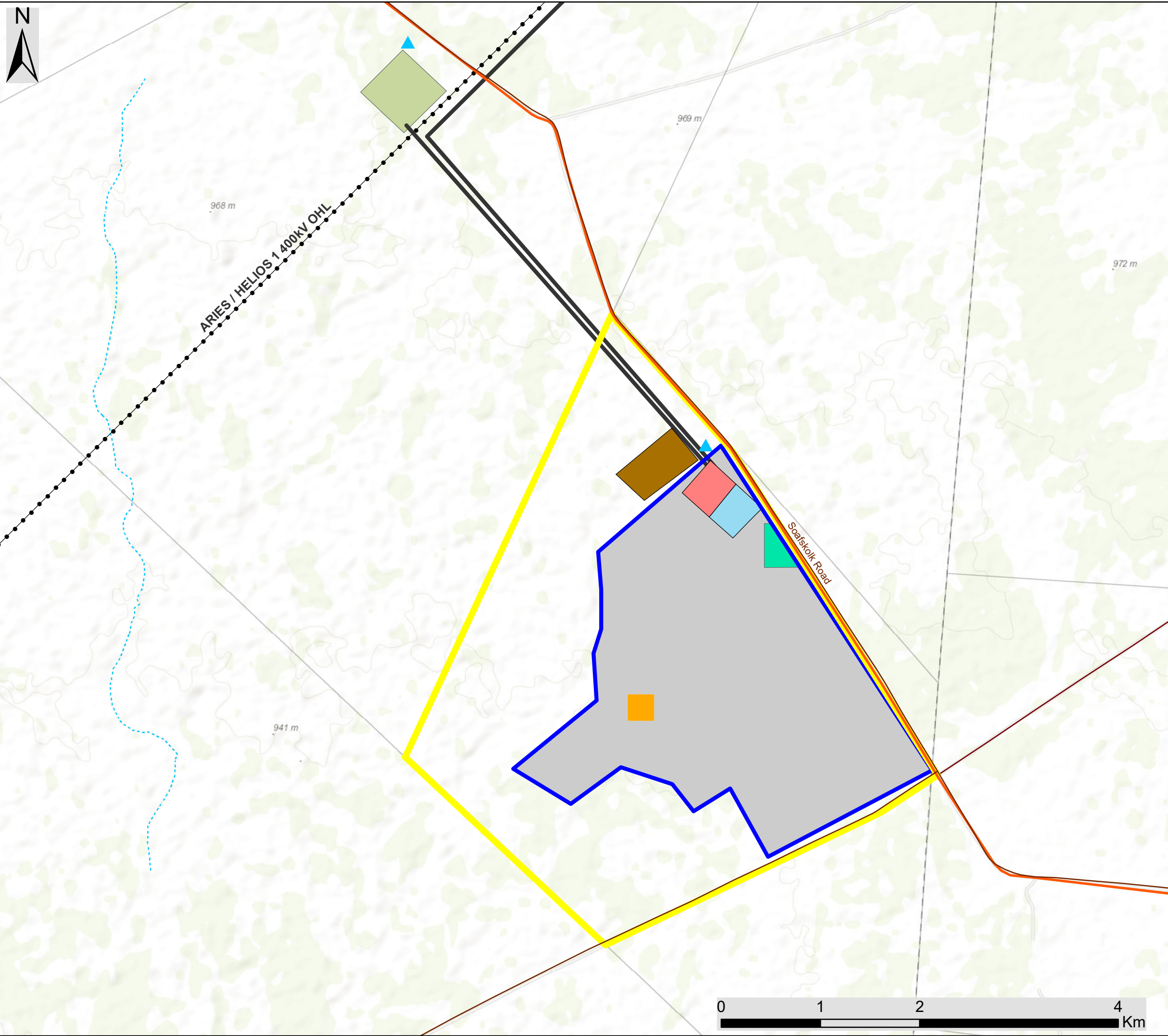
Legend

- - - Non-perennial river
- Main road
- · - Existing Power Line
- Development Envelope
- Admin block, Assem. plant & laydown
- PV Array and IESS
- Development Area
- Farm portions



Scale: 1: 35 800
 Projection: WGS_1984
 Map Ref: Kotulo Tsatsi Energy PV1 - Layout





Kotulo Tsatsi Energy PV1, Northern Cape

PV Facility and Authorised Infrastructure Map

Legend

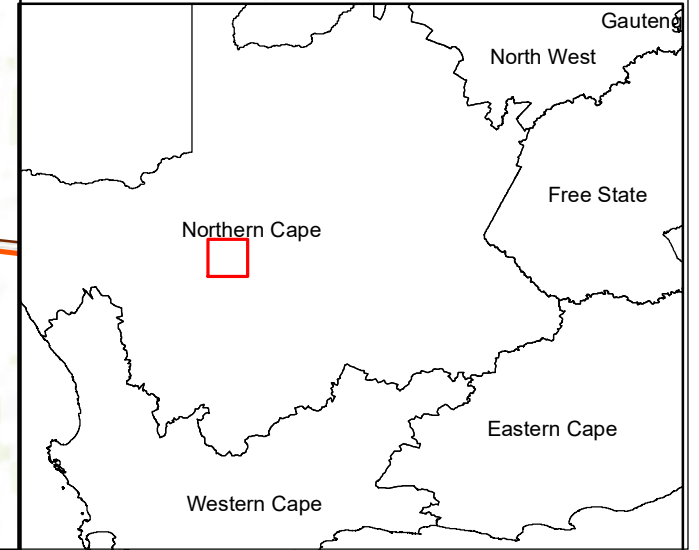
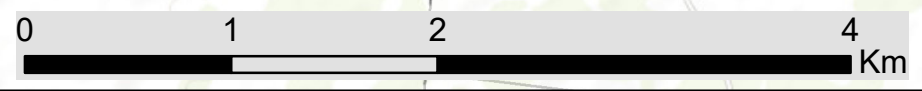
- - - Non-perennial river
- Main road
- Existing Power Line
- Development Envelope
- Admin block, Assem. plant & laydown
- PV Array and IESS
- Farm portions
- Development Area

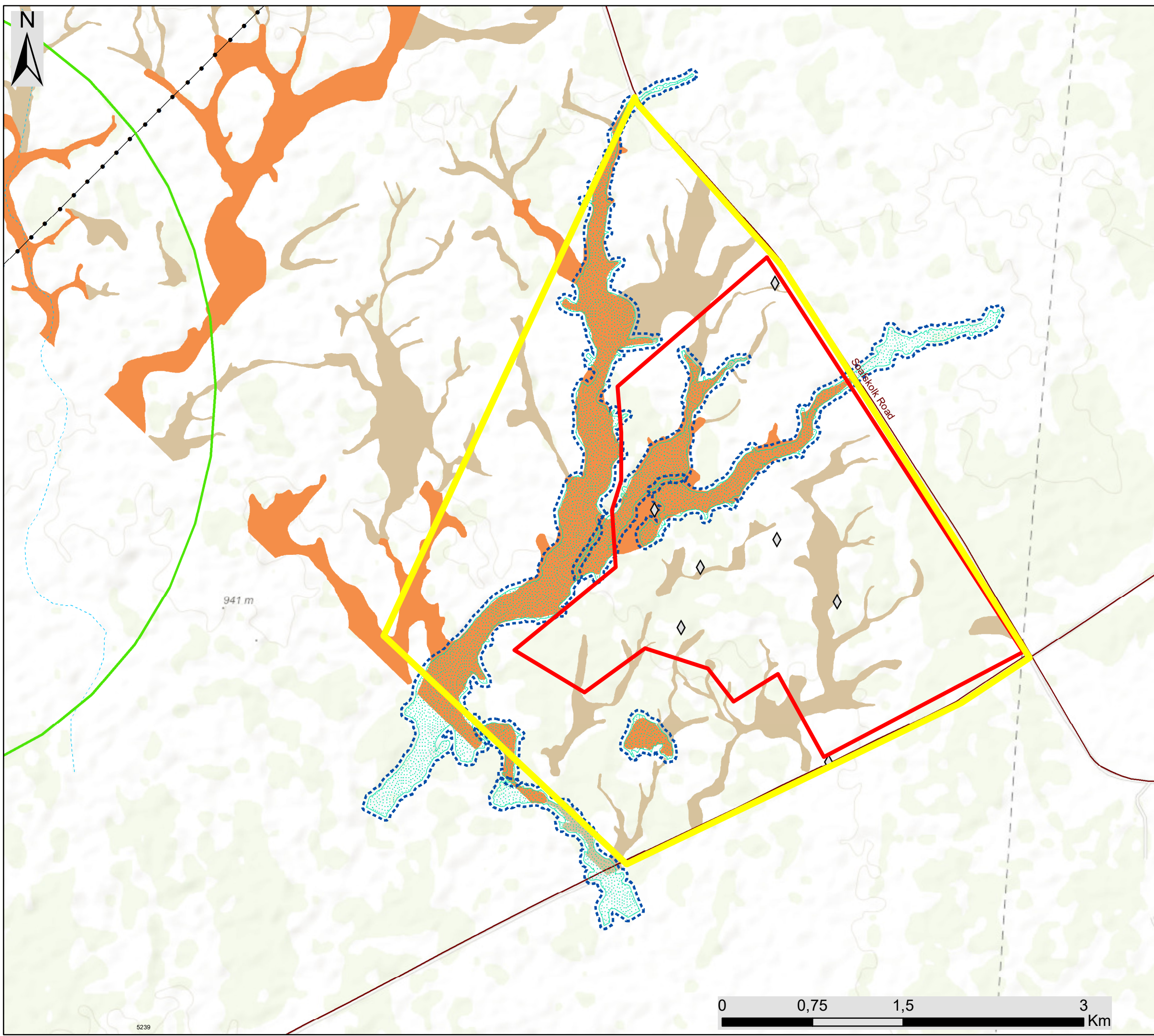
Authorised Infrastructure

- ▲ Raw Water Reservoirs
- Grid Connection
- Water Supply Pipelines
- Man Camp
- Power Block & Thermal Storage
- Project Step-up Substation
- Eskom Switching Station
- Eskom Collector Substation



Scale: 1: 35 800
 Projection: WGS_1984
 Map Ref: Kotulo Tsatsi Energy PV1-





Kotulo Tsatsi Energy PV1, Northern Cape

Environmental Sensitivity Map

Legend

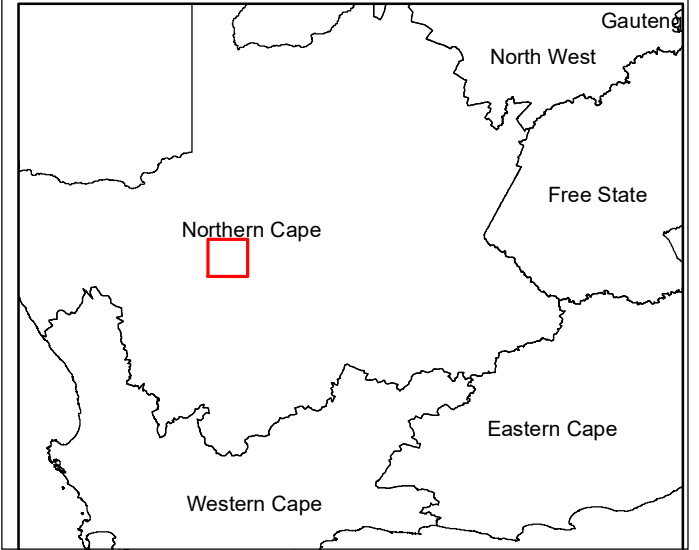
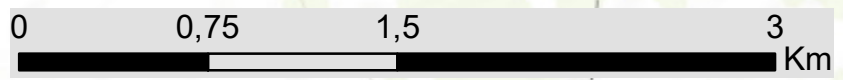
- Existing Power Line
- Main road
- - - Non-perennial river
- ▭ Development Area
- ▭ Development Envelope

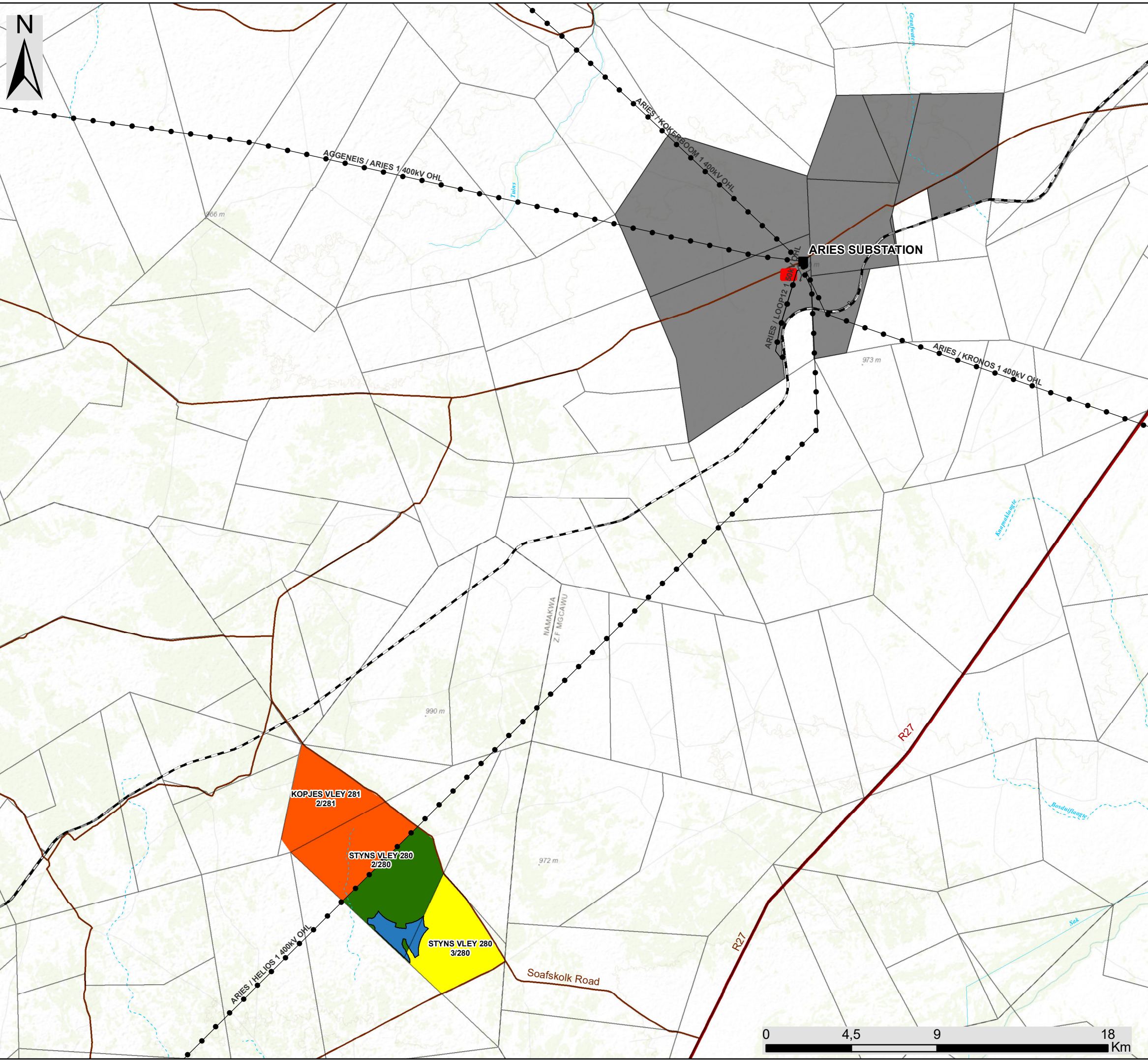
Environmental Sensitivities

- ◇ Heritage Sites (Low)
- ▭ Drainage Feature Buffer (30m) - Very High (No-Go)
- ▭ Drainage Feature - Very High (No-Go)
- ▭ Martial Eagle Buffer (3km) - Very High (No-Go)
- Ecological Sensitivity - High
- Ecological Sensitivity - Medium



Scale: 1: 50 000
 Projection: WGS_1984
 Map Ref: Kotulo Tsatsi Energy PV1 - Sensitivity





Kotulo Tsatsi Energy PV1, Northern Cape

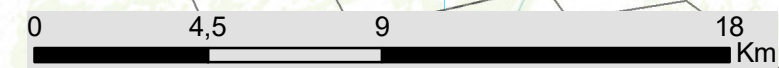
Cumulative Map

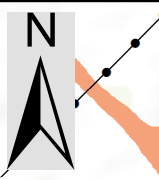
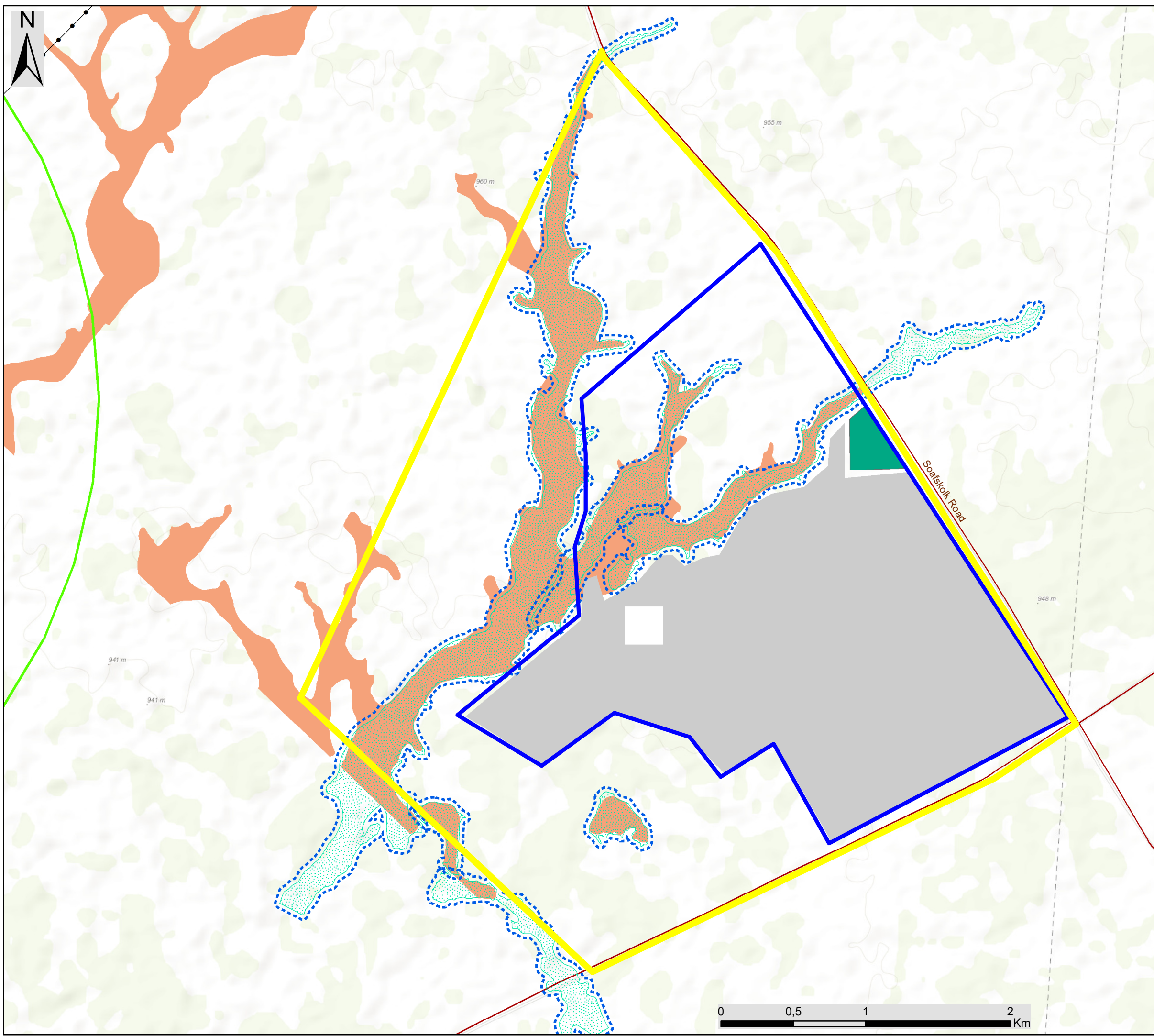
Legend

- Eskom substation
 - Existing Power Line
 - Regional road
 - Main road
 - Railway
 - Perennial river
 - - - Non-perennial river
 - Farm portions
 - Kotulo Tsatsi Energy PV1
- Other solar PV developments:**
- Various authorised solar PV facilities
 - Operational Aries Solar PV
 - Authorised Kotulo Tsatsi PV2
 - Authorised Kotulo Tsatsi Energy CSP2
 - Authorised Kotulo Tsatsi Energy CSP3



Scale: 1: 195 800
 Projection: WGS1984
 Map Ref: Kotulo Tsatsi Energy PV1 -





Kotulo Tsatsi Energy PV1, Northern Cape

Environmental Sensitivity & Optimised Layout Map

Legend

- Existing Power Line
- Main road
- Non-perennial river
- Development Envelope
- Optimised Admin block, Assem. plant & laydown
- Optimised PV Array & IESS
- Development Area

Environmental Sensitivities

- Drainage Feature Buffer (30m) - Very High (No-Go)
- Drainage Feature - Very High (No-Go)
- Martial Eagle Buffer (3km)
- Ecological Sensitivity - High



Scale: 1: 50 000
 Projection: WGS_1984
 Map Ref: Kotulo Tsatsi Energy PV1 - Optimised

