



FINAL SCOPING REPORT  
June 2016

## THE PROPOSED KAGISO SOLAR POWER PLANT NEAR HOTAZEL, NORTHERN CAPE PROVINCE



## PROJECT DETAIL

**DEA Reference No.** : 14/12/16/3/3/2/934

**Project Title** : Proposed Kagiso Solar Power Plant near Hotazel, Northern Cape Province

**Authors** : Mrs. Carli Otte  
Ms. Marelle Griesel

**Client** : Kagiso Solar Power Plant (RF) (Pty) Ltd.

**Report Status** : Final Scoping Report

**Submission date** : 28 June 2016

**When used as a reference this report should be cited as:** Environamics (2016) Final Scoping Report: Proposed Kagiso Solar Power Plant near Hotazel, Northern Cape Province.

### **COPYRIGHT RESERVED**

This technical report has been produced for Kagiso Solar Power Plant (RF) (Pty) Ltd. The intellectual property contained in this report remains vested in Environamics and Kagiso Solar Power Plant (RF) (Pty) Ltd. No part of the report may be reproduced in any manner without written permission from Environamics or Kagiso Solar Power Plant (RF) (Pty) Ltd.

## TABLE OF CONTENTS

<b>PROJECT DETAIL.....</b>	<b>1</b>
<b>TABLE OF CONTENTS.....</b>	<b>2</b>
<b>LIST OF TABLES .....</b>	<b>5</b>
<b>LIST OF FIGURES.....</b>	<b>6</b>
<b>LIST OF TABLES .....</b>	<b>7</b>
<b>APPENDICES .....</b>	<b>7</b>
<b>GLOSSARY OF TERMS AND ACRONYMS.....</b>	<b>8</b>
<b>EXECUTIVE SUMMARY .....</b>	<b>9</b>
<b>EXECUTIVE SUMMARY .....</b>	<b>10</b>
<b>1 INTRODUCTION .....</b>	<b>14</b>
1.1 LEGAL MANDATE AND PURPOSE OF THE REPORT .....	14
1.2 DETAILS OF THE ENVIRONMENTAL ASSESSMENT PRACTITIONER (EAP) .....	16
1.3 DETAILS OF SPECIALISTS .....	16
1.4 STATUS OF THE EIA PROCESS .....	19
1.5 STRUCTURE OF THE REPORT .....	20
<b>2 ACTIVITY DESCRIPTION .....</b>	<b>24</b>
2.1 THE LOCATION OF THE ACTIVITY AND PROPERTY DESCRIPTION.....	24
2.2 ACTIVITY DESCRIPTION .....	25
2.3 PHOTOVOLTAIC TECHNOLOGY .....	27
2.4 LAYOUT DESCRIPTION .....	28
2.5 SERVICES PROVISION.....	29
<b>3 LEGISLATIVE AND POLICY CONTEXT .....</b>	<b>31</b>
3.1 INTRODUCTION .....	31

3.2	LEGISLATIVE CONTEXT.....	33
3.3	POLICY CONTEXT .....	37
3.4	OTHER LEGISLATION.....	45
3.5	RELEVANT GUIDANCE.....	45
3.6	CONCLUSION .....	45
<b>4</b>	<b>THE NEED AND DESIRABILITY.....</b>	<b>46</b>
4.1	THE NEED FOR THE PROPOSED ACTIVITY.....	46
4.2	THE DESIRABILITY OF THE PROPOSED ACTIVITY .....	46
<b>5</b>	<b>DESCRIPTION OF ENVIRONMENTAL ISSUES.....</b>	<b>49</b>
5.1	CONSIDERATION OF ALTERNATIVES.....	49
5.1.1	No-go alternative.....	50
5.1.2	Location alternatives .....	50
5.1.3	Activity alternatives.....	51
5.1.4	Technical alternatives.....	52
5.1.5	Design and layout alternatives.....	53
5.1.6	Technology alternatives .....	54
5.2	PUBLIC PARTICIPATION PROCESS.....	55
5.2.1	General .....	56
5.2.2	Consultation process .....	60
5.2.3	Registered I&APs .....	60
5.2.4	Issues raised by IAPs and consultation bodies .....	60
5.3	THE ENVIRONMENTAL ATTRIBUTES ASSOCIATED WITH THE PREFERRED ALTERNATIVE	61
5.3.1	Biophysical environment.....	62
5.3.2	Description of the socio-economic environment.....	71
5.4	SITE SELECTION MATRIX.....	73
5.5	CONCLUDING STATEMENT ON ALTERNATIVES .....	74

<b>6</b>	<b>DESCRIPTION OF THE IMPACTS AND RISKS.....</b>	<b>76</b>
6.1	SCOPING METHODOLOGY .....	76
6.1.1	Checklist analysis.....	76
6.1.2	Matrix analysis.....	79
6.2	KEY ISSUES IDENTIFIED .....	93
6.2.1	Impacts during the construction phase.....	93
6.2.2	Impacts during the operational phase .....	93
6.2.3	Impacts during the decommissioning phase.....	93
<b>7</b>	<b>CUMULATIVE EFFECTS ASSESSMENT .....</b>	<b>94</b>
7.1	Introduction.....	94
7.2	Geographic Area of Evaluation.....	94
7.3	Temporal Boundary of Evaluation.....	95
7.4	OTHER PROJECTS IN THE AREA .....	95
7.4.1	Existing projects in the area .....	95
7.4.2	Projects in the foreseeable future.....	97
7.5	SPECIALIST INFORMATION ON CUMULATIVE EFFECTS .....	97
7.5.1	Geology.....	98
7.5.2	Soil, Land Capability and Agricultural Potential .....	98
7.5.3	Ecology .....	98
7.5.4	Birds.....	99
7.5.5	Social Impact Assessment .....	100
7.5.6	Visual .....	100
7.5.7	Heritage .....	100
7.5.8	Traffic.....	100
7.6	IMPACT ASSESSMENT.....	101
7.6.1	Potential Cumulative Effects .....	101

7.7	CONCLUSION .....	105
<b>8</b>	<b>PLAN OF STUDY FOR EIA.....</b>	<b>106</b>
8.1	INTRODUCTION .....	106
8.2	ANTICIPATED OUTCOMES OF THE IMPACT ASSESSMENT PHASE .....	106
8.3	TASKS TO BE UNDERTAKEN .....	107
8.3.1	Project Description .....	107
8.3.2	Consideration of alternatives .....	107
8.3.3	Compilation of Environmental Impact Report .....	108
8.3.4	Public participation.....	108
8.4	ASPECTS ASSESSED .....	108
8.4.1	Specialist studies .....	110
8.4.2	Terms of reference for specialist studies .....	110
8.5	METHOD OF ENVIRONMENTAL ASSESSMENT .....	117
8.5.1	Impact Rating System .....	117
8.6	CONSULTATION WITH THE COMPETENT AUTHORITY.....	122
<b>9</b>	<b>CONCLUSION .....</b>	<b>123</b>
<b>10</b>	<b>REFERENCES.....</b>	<b>125</b>

## LIST OF TABLES

Table 1.1: Listed activities

Table 1.2: Details of specialists

Table 1.3: Estimated timeframe for completion of the 'scoping and EIA process'

Table 1.4: Structure of the report

Table 2.1: General site information

Table 2.2: Listed activities

Table 2.3: Coordinates

Table 3.1: Legislative context for the establishment of Solar PV Plant

Table 3.2: Policy context for the establishment of a Solar PV Plant

Table 5.1: Issues raised by key consultation bodies

Table 5.2: Protected tree species frequency, density/ha & number of specimens per VU

Table 5.3: Trip Summary for Long Distance Route

Table 6.1: Environmental checklist

Table 6.2: Matrix analysis

Table 7.1: Potential Cumulative Effects for the proposed project

Table 8.1: Aspects to be assessed

Table 8.2: The rating system

## **LIST OF FIGURES**

Figure 1: Locality map

Figure 2: Regional map

Figure 3: Footprint map

Figure 4: Land capability classification map

Figure 5: Vegetation map

Figure 6: Cumulative impacts map

Figure 7: The proposed laydown area on the Remaining Extent of the farm Kameel Aar No. 315

Figure 8: Map indicating coordinate points

Figure 9: Location alternatives on the Remaining Extent of the farm Kameel Aar No. 315

Figure 10: Horizontal irradiation for South Africa

Figure 11: Preferred site on Remaining Extent of the farm Kameel Aar No. 315

Figure 12: Surrounding land owners

Figure 13: Examples of *Boscia albitrunca*, *Acacia haematoxylon* and *Acacia Erioloba*

Figure 14: The two vegetation units on the site

Figure 15: Cross section profile taken from Hotazel to proposed development

Figure 16: Cross section profile taken from north to south

Figure 17: Cross section profile taken from east to west

Figure 18: Geographic area of evaluation

Figure 19: Utility-scale Renewable Energy Generation Sites

Figure 20: National Wind and Solar PV SEA: Renewable Energy EIA Application Received before Dec. 2015

## **PLATES**

Plate 1: The site (taken towards the north)

Plate 2: The site (taken towards the north-east)

Plate 3: The site (taken towards the east)

Plate 4: The site (taken towards the south-east)

Plate 5: The site (taken towards the south)

Plate 6: The site (taken towards the south-west)

Plate 7: The site (taken towards the west)

Plate 8: The site (taken towards the north-west)

Plate 9: Access road (taken towards the south-east)

Plate 10: Access road (taken towards the north-west)

Plate 11: Proposed access route to the site

Plate 12: Vegetation on site (Devil's Claw)

Plate 13: Power line in the distance, crossing the site

Plate 14: Grey-Camel Thorn Three (*Acacia haematoxylon*) on site

## **APPENDICES**

Appendix A: EAP declaration

Appendix B: Press advertisement

Appendix C: On site notice

Appendix D: List of I&APs

Appendix E: Proof of correspondence

Appendix F: Written comments

Appendix G: Assessment

Appendix G1: Developer Alternatives Assessment



## Appendix G2: Significance Rating of Potential Impacts

### Appendix H: Specialist Reports

Appendix H1: Geotechnical Study

Appendix H2: Ecological Fauna and Flora Habitat Survey & Wetland Assessment

Appendix H3: Avifaunal Study

Appendix H4: Visual Impact Assessment

Appendix H5: Agricultural and Soils Impact Assessment

Appendix H6: Heritage Impact Assessment

Appendix H7: Palaeontological Impact Assessment

Appendix H8: Social Impact Assessment

### Appendix I: Additional Information

## GLOSSARY OF TERMS AND ACRONYMS

BA	Basic Assessment
BAR	Basic Assessment Report
DEA	Department of Environmental Affairs
DM	District Municipality
DoE	Department of Energy
DWS	Department of Water and Sanitation
EA	Environmental Authorisation
EAP	Environmental Assessment Practitioner
EIA	Environmental Impact Assessment
EMPr	Environmental Management Programme
EP	Equator Principles
EPFI	Equator Principles Financial Institutions
Environmental impact	Any change to the environment, whether adverse or beneficial, wholly or partially resulting from an organization's environmental aspects.
GNR	Government Notice Regulation
I&AP	Interested and affected party
IDP	Integrated Development Plan

IFC	International Finance Corporation
IPP	Independent Power Producer
JMLM	Joe Morolong Local Municipality
kV	Kilo Volt
Mitigate	Activities designed to compensate for unavoidable environmental damage.
MW	Megawatt
NEMA	National Environmental Management Act No. 107 of 1998
NERSA	National Energy Regulator of South Africa
NWA	National Water Act No. 36 of 1998
PPP	Public Participation Process
PV	Photovoltaic
REIPPP	Renewable Energy IPP Procurement Process
SAHRA	South African Heritage Resources Agency
SDF	Spatial Development Framework
SPP	Solar Power Plant
VU	Vegetation Unit

## CONTEXT FOR THE DEVELOPMENT

According to Eskom, the demand for electricity in South Africa has been growing at approximately 3% per annum. This growing demand, fueled by increasing economic growth and social development, is placing increasing pressure on South Africa's existing power generation capacity. Coupled with this, is the growing awareness of environmentally responsible development, the impacts of climate change and the need for sustainable development. The use of renewable energy technologies, as one of a mix of technologies needed to meet future energy consumption requirements is being investigated as part of the national Department of Energy's (DoE) long-term strategic planning and research process.

The primary rationale for the proposed solar photovoltaic (PV) facility is to add new generation capacity from renewable energy to the national electricity mix and to aid in achieving the goal of 42% share of all new installed generating capacity being derived from renewable energy forms, as targeted by DoE (Integrated Resource Plan Update 2010-2030). In terms of the Integrated Resource Plan Update (IRP Update, 2010-2030), over the short term (of the next two or three years), clear guidelines arose; namely to continue with the current renewable bid programme

with additional annual rounds of 1000 MW PV, with approximately 8.4GW of the renewable energy capacity planned to be installed from PV technologies over the next twenty years.

To contribute towards this target and to stimulate the renewable energy industry in South Africa, the need to establish an appropriate market mechanism was identified, and the Renewable Energy IPP Procurement (REIPPP) process was announced in August 2012, with the intention of DoE to purchase 3,750MW of renewable energy from IPPs to be delivered to the national grid by end of 2016 under a 20-year Power Purchase Agreement to be signed with Eskom. The establishment of the REIPPP process in South Africa provides the opportunity for an increased contribution towards the sustained growth of the renewable energy sector in the country, the region and internationally, and promote competitiveness for renewable energy with conventional energies in the medium- and long-term.

In response to the above, Kagiso Solar Power Plant (RF) (Pty) Ltd. is proposing the development of a photovoltaic solar facility and associated infrastructure for the purpose of commercial electricity generation on an identified site located near Hotazel in the Northern Cape Province (refer to figure 1 for the locality map). From a regional site selection perspective, this region is preferred for solar energy development due to its global horizontal irradiation value of 2240 kWh/m<sup>2</sup>/annum.

## **EXECUTIVE SUMMARY**

Like many other small and developing municipalities in the country, the Joe Local Municipality faces a number of challenges in addressing the needs and improving the lives of the community (IDP, 2015-16). The Joe Morolong Local Municipality's (JMLM) Integrated Development Plan (IDP, 2015-16) identifies the mission of the municipality as: to commit themselves to developing communities in a sustainable and democratic manner, with the scope of affordability with reference to participation in all decisions affecting their lives, basic service delivery by the municipality and socio-economic development opportunities within a safe and healthy environment. The IDP does not explicitly deal with renewable energy development, but the Joe Morolong IDP does however have development imperatives that relate to the proposed project that will produce sufficient energy to support industry at competitive prices and the investment in public infrastructure focusing on transport, energy and water.

In response to the above Kagiso Solar Power Plant (RF) (Pty) Ltd. intends to develop a 115MW photovoltaic solar facility and associated infrastructure on the Remaining Extent of the farm Kameel Aar 315, Registration Division Kuruman, Northern Cape situated within the Joe Morolong Local Municipality area of jurisdiction. The town of Hotazel is located approximately 8km north west of the proposed development (refer to figure 1 and 2 for the locality and regional maps). The total footprint of the project will approximately be 300 hectares (including supporting infrastructure on site). The site was identified as being highly desirable due to its suitable climatic

conditions, topography (i.e. in terms of slope), environmental conditions (i.e. agricultural potential, ecological sensitivity and archaeology), proximity to a grid connection point (i.e. for the purpose of electricity evacuation), as well as site access (i.e. to facilitate the movement of machinery, equipment, infrastructure and people during the construction phase).

The Environmental Impact Assessment (EIA) Regulations, 2014 (Regulation 982) determine that an environmental authorisation is required for certain listed activities, which might have detrimental effects on the environment. The following activities have been identified with special reference to the proposed development and are listed in the EIA Regulations:

- Activity 11(i) (GN.R. 983): *“The development of facilities or infrastructure for the transmission and distribution of electricity outside urban areas or industrial complexes with a capacity of more than 33 but less than 275 kilovolts.”*
- Activity 28 (ii) (GN.R. 983): *“Residential, mixed, retail, commercial, industrial or institutional developments where such land was used for agriculture or afforestation on or after 1998 and where such development (ii) will occur outside an urban area, where the total land to be developed is bigger than 1 hectare.”*
- Activity 1 (GN.R. 984): *“The development of facilities or infrastructure for the generation of electricity from a renewable resource where the electricity output is 20 megawatts or more...”*
- Activity 15 (GN.R. 984): *“The clearance of an area of 20 hectare or more of indigenous vegetation...”*

Being listed under Listing Notice 1 and 2 (Regulation 983 & 984) implies that the development is considered as potentially having a significant impact on the environment. Subsequently a ‘thorough assessment process’ is required as described in Regulations 21-24. Environamix has been appointed as the independent consultant to undertake the EIA on Kagiso Solar Power Plant’s behalf.

Regulation 21 of the EIA Regulations requires that a scoping report must contain all the information that is necessary for a proper understanding of the nature of issues identified during scoping. The potential positive and negative impacts associated with the proposed activity have been identified. The potentially most significant environmental impacts associated with the development are briefly summarized below:

#### Impacts during the construction phase:

During the construction phase minor negative impacts are foreseen over the short term. The latter refers to a period of months. The potentially most significant impacts relate to the impacts on the fauna and flora, soils, geology, existing services infrastructure, surface water, impacts on heritage resources, traffic impacts and socio-economic impacts such as the provision of temporary employment.

#### Impacts during the operational phase:

During the operational phase the study area will serve as a solar PV energy facility and the potential impacts will take place over a period of 20 – 25 years. The negative impacts are generally associated with impacts on the fauna and flora, soils, geology, the increased consumption of water, surface water and visual impacts. The provision of sustainable services delivery also needs to be confirmed. The operational phase will have a direct positive impact through the provision of employment opportunities for its duration, and the generation of income to the local community. Additional electricity will also be generated. from a clean, renewable resource.

#### Impacts during the decommissioning phase:

The physical environment will benefit from the closure of the solar facility since the site will be restored to its natural state. The decommissioning phase will result in the loss of permanent employment. However, skilled staff will be eminently employable and a number of temporary jobs will also be created during the decommissioning phase.

#### Cumulative impacts:

Cumulative impacts could arise as other similar projects are constructed in the area. According to the Energy Blog's database seven other solar PV plants have been granted preferred bidder status within proximity radius of 120km to the proposed Kagiso PV plant.

However, according to the Department's database eighteen (18) other solar plants have been proposed in relative close proximity to the proposed activity. Environamics and other environmental consultants are also in the process of applying for Environmental Authorisation for four (4) additional PV projects in the surrounding area.

The potential for cumulative impacts may therefore exist. The Final Scoping Report includes a detailed assessment of the potential cumulative impacts associated with the proposed development. Potential cumulative impacts with a significance rating of negative medium during the construction phase relate to: loss or fragmentation of indigenous natural fauna and flora, loss or fragmentation of habitats, generation of waste, temporary employment opportunities, impact of construction workers on local communities, and an influx of job seekers and traffic impacts. Cumulative impacts (-Medium) during the operational phase relate to: visual intrusion, soil erosion, generation of additional electricity, the establishment of a community trust and the development of infrastructure for the generation of clean, renewable energy. The cumulative effect of the generation of waste was identified as being potentially significant during the decommissioning phase.

Regulation 23 of the EIA Regulations determine that an EIA report be prepared and submitted for the proposed activity after the competent authority approves the final scoping report. The EIA report will evaluate and rate each identified impact, and identify mitigation measures that may be required. The EIA report will contain information that is necessary for the competent authority

to consider the application and to reach a decision contemplated in Regulation Appendix 3 of the EIA Regulations.

# 1 INTRODUCTION

This section aims to introduce the Scoping Report and specifically to address the following requirements of the regulations:

**Appendix 2.** (2) A scoping report (...) must include- (a) details of:

- (i) the EAP who prepared the report; and
- (ii) the expertise of the EAP, including a curriculum vitae.

## 1.1 LEGAL MANDATE AND PURPOSE OF THE REPORT

Regulations No. 982, 983, 984 and 985 (of 4 December 2014) promulgated in terms of Section 24(5) and 44 of the National Environmental Management Act, (107 of 1998) determine that an EIA process should be followed for certain listed activities, which might have a detrimental impact on the environment. According to Regulation No. 982 the purpose of the Regulations is: *“...to regulate the procedure and criteria as contemplated in Chapter 5 of the Act relating to the preparation, evaluation, submission, processing and consideration of, and decision on, applications for environmental authorisations for the commencement of activities, subjected to environmental impact assessment, in order to avoid or mitigate detrimental impacts on the environment, and to optimise positive environmental impacts, and for matters pertaining thereto”*.

The EIA Regulations No. 983 and 984 outline the activities for which EIA should apply. The following activities with special reference to the proposed activity are listed in the EIA Regulations:

**Table 1.1:** Listed activities <sup>1</sup>

Relevant notice:	Activity No (s)	Description of each listed activity as per project description:
GNR. 983, 4 December 2014	Activity 11(i)	<ul style="list-style-type: none"><li>“The development of facilities or infrastructure for the transmission and distribution of electricity (i) outside urban areas or industrial complexes with a capacity of more than 33 but less than 275 kilovolts.”</li><li>Activity 11(i) is triggered since the proposed photovoltaic solar facility will transmit and distribute electricity of 132 kilovolts outside an urban area.</li></ul>

<sup>1</sup> Please refer to Table 6.2 for a detailed description of the relevant aspects of the development that will apply to each specific listed activity.

GNR. 983, 4 December 2014	Activity 28(ii)	<ul style="list-style-type: none"> <li>• <i>“Residential, mixed, retail, commercial, industrial or institutional developments where such land was used for agriculture or afforestation on or after 1998 and where such development (ii) will occur outside an urban area, where the total land to be developed is bigger than 1 hectare.”</i></li> <li>• Activity 28(ii) is triggered since portions of the farm has been previously cultivated and the property will be re-zoned to “special” land use.</li> </ul>
GNR. 984, 4 December 2014	Activity 1	<ul style="list-style-type: none"> <li>• <i>“The development of facilities or infrastructure for the generation of electricity where the electricity output is 20 megawatts or more.”</i></li> <li>• Activity 1 is triggered since the proposed photovoltaic solar facility will generate up to 115MW MW electricity.</li> </ul>
GNR. 984, 4 December 2014	Activity 15	<ul style="list-style-type: none"> <li>• <i>“The clearance of an area of 20 hectares or more of indigenous vegetation.”</i></li> <li>• In terms of vegetation type the site falls within the Kathu Bushveld vegetation type, which is described by Mucina and Rutherford (2006) as ‘least threatened’. Activity 15 is triggered since portions of the site has not been lawfully disturbed during the preceding ten years; therefore, more than 20 hectares of indigenous vegetation will be removed.</li> </ul>

Being listed under Listing Notices 1 and 2 (Regulation 983 & 984) implies that the proposed activity is considered as potentially having a significant impact on the environment. Subsequently a ‘thorough assessment process’ is required as described in Regulations 21-24. According to Appendix 2 of Regulation 982 the objective of the scoping process is to, through a consultative process:

- Identify the relevant policies and legislation relevant to the activity;
- Motivate the need and desirability of the proposed activity, including the need and desirability of the activity in the context of the preferred location;
- Identify and confirm the preferred activity and technology alternative through an impact and risk assessment and ranking process;
- Identify and confirm the preferred site, through a detailed site selection process, which includes an impact and risk assessment process inclusive of cumulative impacts and a ranking process of all the identified alternatives focusing on the geographical, physical, biological, social, economic, and cultural aspects of the environment;



- Identify the key issues to be addressed in the assessment phase;
- Agree on the level of assessment to be undertaken, including the methodology to be applied, the expertise required as well as the extent of further consultation to be undertaken to determine the impacts and risks the activity will impose on the preferred site through the life of the activity, including the nature, significance, consequence, extent, duration and probability of the impacts to inform the location of the development footprint within the preferred site; and
- Identify suitable measures to avoid, manage or mitigate identified impacts and to determine the extent of the residual risks that need to be managed and monitored.

This report is the Final Scoping Report to be submitted to the Department of Environmental Affairs. According to Regulation 982 all registered I&APs and relevant State Departments must be allowed the opportunity to review the scoping report. The Draft Scoping Report was made available to I&APs and all relevant State Departments. They were requested to provide written comments on the report within 30 days of receiving it. All issues identified during the review period are documented and compiled into a Comments and Response Report included as part of the Final Scoping Report.

## **1.2 DETAILS OF THE ENVIRONMENTAL ASSESSMENT PRACTITIONER (EAP)**

Environamics was appointed by the applicant as the independent EAP to conduct the EIA and prepare all required reports. All correspondence to the EAP can be directed to:

Contact person: Marélie Griesel  
 Postal Address: PO Box 6484, Baillie Park, 2526  
 Telephone: 018-290 8228 (w) 086 762 8336 (f) 081 477 9545 (Cell)  
 Electronic Mail: marelle@environamics.co.za

Regulation 13(1)(a) and (b) determines that an independent and suitably qualified and experienced EAP should conduct the EIA. In terms of the independent status of the EAP a declaration is attached as Appendix A to this report. The expertise of the EAP responsible for conducting the EIA is also summarized in a curriculum vitae included as part of Appendix A.

## **1.3 DETAILS OF SPECIALISTS**

Table 1.2 provides information on the specialists that have been appointed as part of the EIA process. Regulation 13(1)(a) and (b) determines that an independent and suitably qualified, experienced and independent specialist should conduct the specialist study, in the event where the specialist is not independent, a specialist should be appointed to externally review the work of the specialist as contemplated in sub regulation (2), must comply with sub regulation 1. In terms of the independent status of the specialists, their declarations are attached as Appendix H to this report. The expertise of the specialists is also summarized in their respective reports.

**Table 1.2:** Details of specialists

Study	Prepared by	Contact Person	Postal Address	Tel	e-mail
Avifaunal Study	Birds & Bats Unlimited	Dr. Rob Simmons	Constantia, Cape Town, 8010	Tel. 021 794 8671 Cell 082 780 0133	rob.simmons@uct.ac.za
Ecological Fauna & Flora Habitat Survey	Soilcraft CC	A. Götze	P. O. Box 20640 Noordbrug, 2522	Cell 082 789 4669	albie.erc@gmail.com
Heritage Impact Assessment	J van Schalkwyk Heritage Consultant	J van Schalkwyk	62 Coetzer Avenue, Monument Park, 0181	Cell 076 790 6777	jvschalkwyk@mweb.co.za
Paleontological Study	Paleo Field Services	Dr. Lloyd Rossouw	P. O. Box 38806 Langenhovenpark, 9330	Cell 084 250 5992	lloyd.rossouw@gmail.com
Agricultural & Soils Impact Assessment	Johann Lanz Soil Scientist	Johann Lanz	P. O. Box 6209 Uniedal Stellenbosch, 7612	Tel. 021 866 1518 Cell 082 927 9018	johann@johannlanz.co.za
Visual Impact Assessment	Phala Environmental Consultants	Johan Botha	7a Burger Street Potchefstroom, 2531	Tel. 082 316 7749	johan@phala-environmental.co.za
Social Impact Assessment	Leandri Kruger Research & Social Impact Assessment Consultant	Mrs. L. Kruger	27 Tuscan Views, Ditedu Ave 51, Potchefstroom, 2520	Cell: 082 447 1455	leandrihildebrandt@gmail.com

#### 1.4 STATUS OF THE EIA PROCESS

The EIA process is conducted strictly in accordance with the stipulations set out in Regulations 21-24 of Regulation No. 982. Table 1.3 provides a summary of the EIA process and future steps to be taken. It can be confirmed that to date:

- A site visit was conducted with the developer on 28 February 2016 to discuss the proposed development and assess the site.
- The public participation process was initiated on 17 March 2016 and all I&APs were requested to submit their comments by 20 April 2016.
- A fully completed application form and Draft Scoping report was submitted to the Department on 20 May 2016.
- The Draft Scoping Report was made available to all registered I&APs and relevant State Departments on 19 May 2016 and they were requested to provide their comments on the report within 30 days of the notification (19 June 2016).
- A Public Meeting was held on 23 June 2016 and all registered I&APs were invited to attend through emails and a newspaper advertisement 16 June 2016.

It is envisaged that the Final Scoping Report will be submitted to the Department in June 2016. The EIA process should be completed within approximately nine months of submission of the Draft Scoping Report, i.e. by January 2017 – see table 1.3.

**Table 1.3:** Project schedule

Activity	Prescribed timeframe	Timeframe
Site visit		28 Feb. 2016
Appoint Avifaunal Specialist	6 Months	Feb. – Aug. 2016
Public participation (BID)	30 Days	17 Mar. – 20 April 2016
Conduct specialist studies	-	Feb. – April 2016
Submit application form and DSR	-	20 May 2016
Public participation (DSR)	30 Days	20 May – 21 June 2016
Submit FSR	-	July 2016
Department acknowledges receipt	10 Days	July 2016

Department approves/reject	43 Days	August 2016
Public participation (DEIR)	30 Days	Sept. 2016
Submission of FEIR & EMP	-	October 2016
Department acknowledges receipt	10 Days	October 2016
Decision	107 Days	Oct.-Feb. 2017
Department notifies of decision	5 Days	Feb./March 2017
Registered I&APs notified of decision	14 Days	March 2017
Appeal	20 Days	March 2017

## 1.5 STRUCTURE OF THE REPORT

This report is structured in accordance with the prescribed contents stipulated in Appendix 2 of Regulation No.982. It consists of seven sections demonstrating compliance to the specifications of the regulations as illustrated in table 1.4.

**Table 1.4:** Structure of the report

Requirements for the contents of a scoping report as specified in the Regulations		Section in report	Pages
<b>Appendix 2. (2) - A scoping report must contain all the information that is necessary for a proper understanding of the process, informing all preferred alternatives, including location alternatives, the scope of the assessment, and the consultation process to be undertaken through the environmental impact assessment process, and must include-</b>			
(a)	details of -	1	14-23
	(i) the EAP who prepared the report; and		
	ii) the expertise of the EAP, including a curriculum vitae.		
(b)	the location of the activity, including-	2	24-30
	(i) the 21-digit Surveyor General code of each cadastral land parcel;		
	(ii) where available, the physical address and farm name;		
	(iii) where the required information in items (i) and (ii) is not available, the coordinates of the boundary of the property or properties;		
(c)	a plan which locates the proposed activity or activities applied for at an appropriate scale, or, if it is-		

	(i) a linear activity, a description and coordinates of the corridor in which the proposed activity or activities is to be undertaken; or		
	(ii) on land where the property has not been defined, the coordinates within which the activity is to be undertaken;		
(d)	a description of the scope of the proposed activity, including-		
	(i) all listed and specified activities triggered;		
	(ii) a description of the activities to be undertaken, including associated structures and infrastructure.		
(e)	A description of the policy and legislative context within which the development is proposed including an identification of all legislation, policies, plans, guidelines, spatial tools, municipal development planning frameworks and instruments that are applicable to this activity and are to be considered in the assessment process;	3	31-45
(f)	a motivation for the need and desirability for the proposed development including the need and desirability of the activity in the context of the preferred location;	4	46-48
(g)	a full description of the process followed to reach the proposed preferred activity, site and location within the site, including –	5	49-75
	(i) details of all the alternatives considered;		
	(ii) details of the public participation process undertaken in terms of regulation 41 of the Regulations, including copies of the supporting documents and inputs;		
	(iii) a summary of the issues raised by interested and affected parties, and an indication of the manner in which the issues were incorporated, or the reasons for not including them.		
	(iv) the environmental attributes associated with the alternatives focusing on the geographical, physical, biological, social, economic, heritage and cultural aspects;		
	(ix) the outcome of the site selection matrix;		
	(x) if no alternatives, including alternative locations for the activity were investigated, the motivation for not considering such and		
	(xi) a concluding statement indicating the preferred alternatives, including preferred location of the activity;		
(h)	(v) the impacts and risks identified for each alternative, including the nature, significance, consequence, extent, duration and probability of the impacts, including the degree to which these impacts- (aa) can be reversed; (bb) may cause irreplaceable loss of resources; and (cc) can be avoided, managed or mitigated;	6	76-93
	(vi) the methodology used in determining and ranking the nature, significance, consequences, extent, duration and probability of		

	potential environmental impacts and risks associated with the alternatives;		
	(vii) positive and negative impacts that the proposed activity and alternatives will have on the environment and on the community that may be affected focusing on the geographical, physical, biological, social, economic, heritage and cultural aspects;		
	(viii) the possible mitigation measures that could be applied and level of residual risk; (ix) the outcome of the site selection matrix; (x) if no alternatives, including alternative locations for the activity were investigated, the motivation for not considering such and (xi) a concluding statement indicating the preferred alternatives, including preferred location of the activity;		
(i)	a plan of study for undertaking the environmental impact assessment process to be undertaken, including- (i) a description of the alternatives to be considered and assessed within the preferred site, including the option of not proceeding with the activity; (ii) a description of the aspects to be assessed as part of the EIA process; (iii) aspects to be assessed by specialists; (iv) a description of the proposed method of assessing the environmental aspects, including a description of the proposed method of assessing the environmental aspects including aspects to be assessed by specialists; (v) a description of the proposed method of assessing duration and significance; (vi) an indication of the stages at which the competent authority will be consulted; (vii) particulars of the public participation process that will be conducted during the EIA process; and (viii) a description of the tasks that will be undertaken as part of the EIA process; (ix) identify suitable measures to avoid, reverse, mitigate or manage identified impacts and to determine the extent of the residual risks that need to be managed and monitored.	8	106-122
(j)	an undertaking under oath or affirmation by the EAP in relation to- (i) the correctness of the information provided in the report; (ii) the inclusion of comments and inputs from stakeholders and interested and affected parties; and	Appendix A to the report	

	(iii) any information provided by the EAP to I&APs and any responses by the EAP to comments or inputs made by I&APs;		
(k)	an undertaking under oath or affirmation by the EAP in relation to the level of agreement between the EAP and I&APs on the plan of study for undertaking the EIA;		
(l)	where applicable, any specific information required by the CA; and	N/A	-
(m)	any other matter required in terms of section 24(4)(a) and (b) of the Act.	N/A	-

## 2 ACTIVITY DESCRIPTION

---

This section aims to address the following requirements of the regulations:

**Appendix 2.** (2) A scoping report (...) must include-

(b) the location of the activity, including-

- (i) the 21-digit Surveyor General code of each cadastral land parcel;
- (ii) where available, the physical address and farm name;
- (iii) where the required information in items (i) and (ii) is not available, the coordinates of the boundary of the property or properties;

(c) a plan which locates the proposed activity applied for at an appropriate scale, or, if it is-

- (i) a linear activity, a description and coordinates of the corridor in which the proposed activity or activities is to be undertaken; or
- (ii) on land where the property has not been defined, the coordinates within which the activity is to be undertaken;

(d) a description of the scope of the proposed activity, including-

- (i) all listed and specified activities triggered;
- (ii) a description of the activities to be undertaken, including associated structures and infrastructure.

### 2.1 THE LOCATION OF THE ACTIVITY AND PROPERTY DESCRIPTION

The activity entails the development of a photovoltaic solar facility and associated infrastructure on the Remaining Extent of the farm Kameel Aar No. 315, Registration Division Kuruman, Northern Cape Province situated within the Joe Morolong Local Municipality area of jurisdiction. The proposed development is located in the Northern Cape Province in the northern central interior of South-Africa (refer to figure 2 for the regional map). The town of Hotazel is located approximately 8km north west of the proposed development (refer to figure 1 for the locality map).

The project entails the generation of up to 115MW electrical power through photovoltaic (PV) panels. The total footprint of the project will approximately be 300 hectares (including supporting infrastructure on site) – refer to table 2.1 for general site information. The property on which the facility is to be constructed will be leased by Kagiso Solar Power Plant (RF) (Pty) Ltd. from the property owner, Saltrim Ranches (Pty) Ltd., for the life span of the project (minimum of 20 years). It is expected that generation from the facility will tie in with a new power line to be constructed



by Eskom, which will also traverse the farm Annex Landon No. 278 and the Remaining Extent of the farm Perth No. 276. The property owner of the Remaining Extent of the farm Annex Landon No. 278 is Mr H. D. Fourie and the property owner of the Remaining Extent of the farm Perth No. 276 is Mrs. A. S. Anthonissen.

**Table 2.1:** General site information

Description of affected farm portion	The Remaining Extent of the farm Kameel Aar No. 315, Registration Division Kuruman, Northern Cape
21 Digit Surveyor General codes	C04100000000031500000
Title Deed	T00330/2009
Photographs of the site	Refer to the Plates
Type of technology	Photovoltaic solar facility
Structure Height	Panels ~3.5m, buildings ~ 4m and power lines ~32m
Surface area to be covered	Approximately 300 hectares
Structure orientation	The panels will either be fixed to a single-axis horizontal tracking structure where the orientation of the panel varies according to the time of the day, as the sun moves from east to west or tilted at a fixed angle equivalent to the latitude at which the site is located in order to capture the most sun.
Laydown area dimensions	Approximately 300 hectares
Generation capacity	115MW
Expected production	130-160 GWh per annum

The site is located in a rural area and is bordered by farms and KLK Agricultural Enterprise (north east of the site). The site survey revealed that the site currently consists of grazing for cattle – refer to plates 1-14 for photographs of the development area. The property on which the development is to be established is owned by Saltrim Ranches (Pty) Ltd.

## 2.2 ACTIVITY DESCRIPTION

The proposed development will trigger the following activities:

**Table 2.2:** Listed activities

Relevant notice:	Activity No (s)	Description of each listed activity as per project description:
GNR. 983, 4 December 2014	Activity 11(i)	<ul style="list-style-type: none"> <li>• <i>“The development of facilities or infrastructure for the transmission and distribution of electricity (i) outside urban areas or industrial complexes with a capacity of more than 33 but less than 275 kilovolts.”</i></li> <li>• Activity 11(i) is triggered since the proposed photovoltaic solar facility will transmit and distribute electricity of 132 kilovolts outside an urban area.</li> </ul>
GNR. 983, 4 December 2014	Activity 28(ii)	<ul style="list-style-type: none"> <li>• <i>“Residential, mixed, retail, commercial, industrial or institutional developments where such land was used for agriculture or afforestation on or after 1998 and where such development (ii) will occur outside an urban area, where the total land to be developed is bigger than 1 hectare.”</i></li> <li>• Activity 28(ii) is triggered since the farm has been previously cultivated and the property will be re-zoned to “special”.</li> </ul>
GNR. 984, 4 December 2014	Activity 1	<ul style="list-style-type: none"> <li>• <i>“The development of facilities or infrastructure for the generation of electricity where the electricity output is 20 megawatts or more.”</i></li> <li>• Activity 1 is triggered since the proposed photovoltaic solar facility will generate up to 115MW megawatts electricity.</li> </ul>
GNR. 984, 4 December 2014	Activity 15	<ul style="list-style-type: none"> <li>• <i>“The clearance of an area of 20 hectares or more of indigenous vegetation.”</i></li> <li>• In terms of vegetation type the site falls within the Kathu Bushveld vegetation type, which is described by Mucina and Rutherford (2006) as ‘least threatened’. Activity 15 is triggered since portions of the site has not been lawfully disturbed during the preceding ten years; therefore, more than 20 hectares of indigenous vegetation will be removed.</li> </ul>

The potentially most significant impacts will occur during the construction phase of the development, which will include the following activities:

- Site clearing and preparation: Certain areas of the site will need to be cleared of vegetation and some areas may need to be levelled.
- Civil works to be conducted:

- Terrain levelling if necessary– Levelling will be minimal as the potential site chosen is relatively flat.
- Laying foundation- The structures will be connected to the ground through cement pillars, cement slabs or metal screws. The exact method will depend on the detailed geotechnical analysis.
- Construction of access and inside roads/paths – existing paths will be used where reasonably possible. Additionally, the turning circle for trucks will also be taken into consideration.
- Trenching – all Direct Current (DC) and Alternating Current (AC) wiring within the PV plant will be buried underground. Trenches will have a river sand base, space for pipes, backfill of sifted soil and soft sand and concrete layer where vehicles will pass.

## 2.3 PHOTOVOLTAIC TECHNOLOGY

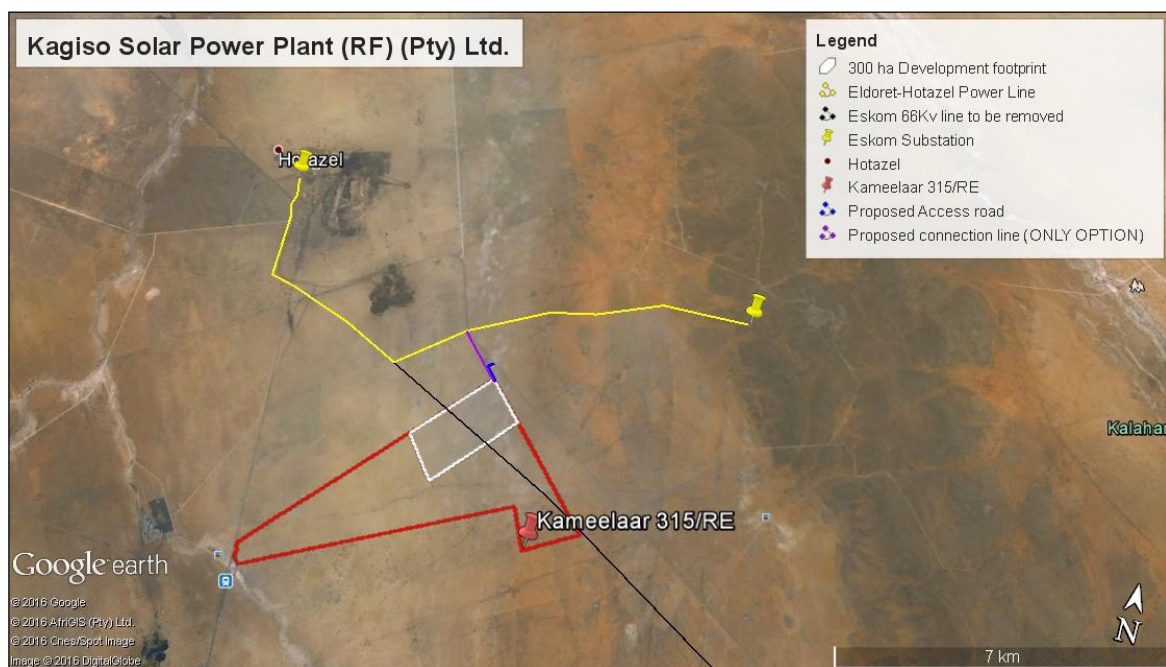
The term photovoltaic describes a solid-state electronic cell that produces direct current electrical energy from the radiant energy of the sun through a process known as the Photovoltaic Effect. This refers to light energy placing electrons into a higher state of energy to create electricity. Each PV cell is made of silicon (i.e. semiconductors), which is positively and negatively charged on either side, with electrical conductors attached to both sides to form a circuit. This circuit captures the released electrons in the form of an electric current (direct current). The key components of the proposed project are described below:

- PV Panel Array - To produce up to 115MW, the proposed facility will require numerous linked cells placed behind a protective glass sheet to form a panel. Multiple modules will be required to form the solar PV array which will comprise the PV facility. The PV modules will either be tilted at a fixed angle, or mounted on trackers tracking from east to west during the day in order to capture the most solar energy.
- Wiring to Central Inverters - Sections of the PV array will be wired to central inverters. The inverter is a pulse width mode inverter that converts direct current (DC) electricity to alternating current (AC) electricity at grid frequency.
- Connection to the grid - Connecting the array to the electrical grid requires transformation of the voltage from 480V to 33kV to 132kV. The normal components and dimensions of a distribution rated electrical substation will be required. Output voltage from the inverter is 480V and this is fed into step up transformers to 132kV. An onsite substation will be required on the site to step the voltage up to 132kV, after which the power will be evacuated into the national grid. Whilst Kagiso Solar Power Plant (Pty) Ltd. has not yet received a cost estimate letter from Eskom, it is expected that generation from the facility will tie in with a new power line to be constructed by Eskom. The Project will inject up to 100MW into the National Grid. The installed capacity will be up to approximately 115MW.
- Electrical reticulation network – An internal electrical reticulation network will be required and will be laid ~2-4m underground as far as practically possible.

- Supporting Infrastructure – The following auxiliary buildings with basic services including water and electricity will be required on site:
  - Office (~16m x 9.85m);
  - Switch gear and relay room (~25m x 14m);
  - Staff lockers and changing room (~21.7m x 9.85m); and
  - Security control (~11.8m x 5.56m)
- Roads – Access will be obtained via the R31 Provincial Road. An internal site road network will also be required to provide access to the solar field and associated infrastructure. The access road will have a width of ~6m and the internal road/track ~5m.
- Fencing - For health, safety and security reasons, the facility will be required to be fenced off from the surrounding farm.

## 2.4 LAYOUT DESCRIPTION

The layout plan will follow the limitations of the site and aspects such as environmentally sensitive areas, roads, fencing and servitudes on site will be considered – refer to figure 7 below. The total surface area proposed for layout options include the PV panel arrays spaced to avoid shadowing, access and maintenance roads and associated infrastructure (buildings, power inverters, transmission lines and perimeter fences). Limited features of environmental significance exist on site. A layout plan will be submitted with the Environmental Impact Report.

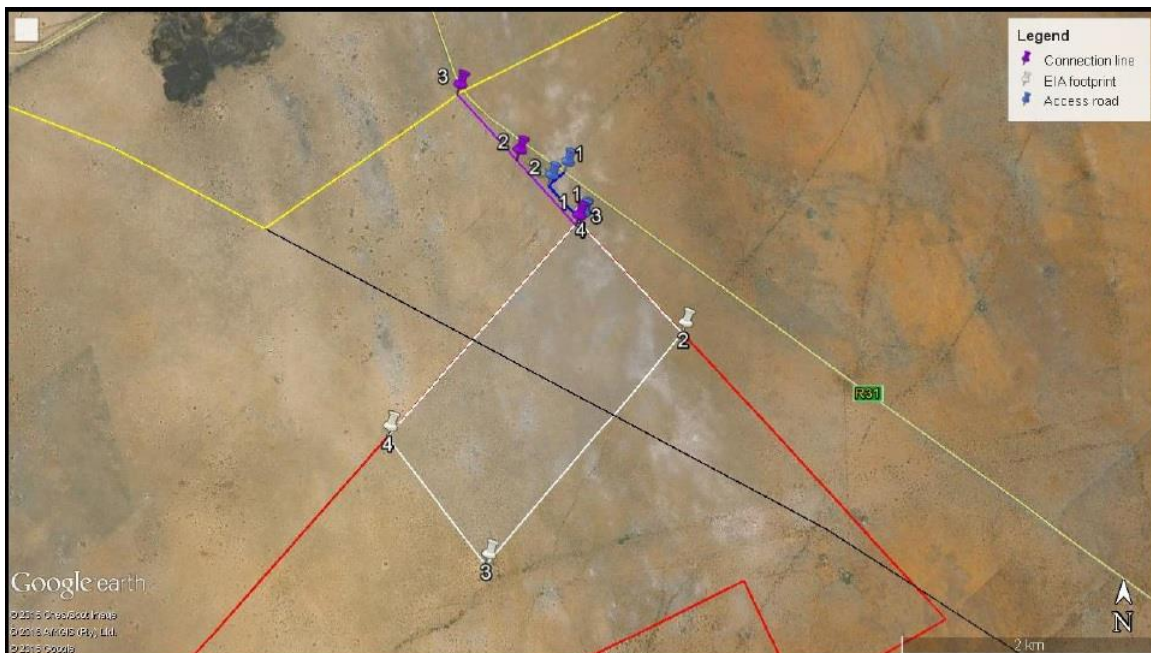


**Figure 7:** The proposed laydown area on the Remaining Extent of the farm Kameel Aar No. 315

Table 2.3 and figure 9 provide and illustrate the corner coordinate points for the proposed development site as well as start, middle and end point coordinates for linear activities.

**Table 2.3:** Coordinates

Coordinates			
<b>EIA Footprint</b>	1	27°14'42.66"S	23° 1'31.79"E
	2	27°15'13.08"S	23° 2'2.92"E
	3	27°16'13.19"S	23° 1'5.03"E
	4	27°15'40.39"S	23° 0'35.57"E
<b>Access Road</b>	1	27°14'29.22"S	23° 1'27.56"E
	2	27°14'33.02"S	23° 1'22.78"E
	3	27°14'42.91"S	23° 1'32.76"E
	4	27°14'43.26"S	23° 1'32.40"E
<b>Power Line</b>	1	27°14'44.01"S	23° 1'31.17"E
	2	27°14'25.85"S	23° 1'13.09"E
	3	27°14'7.40"S	23° 0'54.60"E



**Figure 9:** Map indicating coordinate points

## 2.5 SERVICES PROVISION

Adequate provision of water will be a prerequisite for the development. Water for the proposed development will most likely be obtained from ground water resources, or alternatively from the local municipality. The Department of Water Affairs has been asked to confirm the water resource availability in the relevant catchment management area in order to ensure sustainable water

supply. A full assessment of the application for water use authorisation will only be undertaken in the event that the project proponent has been appointed as a preferred bidder by the Department of Energy.

The site falls within the D41K quaternary drainage region, this drainage region falls under Zone A, which refers to the amount of water that may be taken from the ground water resource per hectare, per annum. According to the Revision of General Authorisations in terms of Section 39 of the National Water Act of 1998 (Act No. 36 of 1998), Zone A indicates that no water may be abstracted from a ground water resource without applying for a Water Use License.

The estimated maximum amount of water required during construction is 200m<sup>3</sup> per month during the 12 months of construction. The estimated maximum amount of water required during the facility's 20 years of production is 3880m<sup>3</sup> per annum. The majority of this usage is for the cleaning of the solar panels. Since each panel requires approximately 2 liters of water for cleaning, the total amount of 460 000 panels will require 920 000 liters per wash. It is estimated that the panels may only need to be washed twice per annum, but provision is made for quaternary cleaning (March, May, July, and September). This totals approximately 3,680,000 liters per annum for washing, and allows 200,000 liters per annum (or 548 liters per day) for toilet use, drinking water, etc. This totals to approximately 3 880m<sup>3</sup> of water required per annum. Drinking water supplied will comply with the SANS:241 quality requirements and it is noted that the Joe Morolong Local Municipality remains the Water Service Authority in that area of jurisdiction.

Generally, the water supply does not require the construction of a reverse osmosis plant. This is however dependant on the quality of the water, or what the mineral content is. Should a reverse osmosis plant be required, brine (the excess minerals) will be formed during the filtration process that will be stored and then removed. Determining baseline water quality conditions is important in order to appropriately manage incidents in the future. The quality of the water will however only undergo testing if the project is selected as preferred bidder by the Department of Energy. Water saving devices and technologies such as the use of dual flush toilets and low-flow taps, the management of storm water, the capture and use of rainwater from gutters and roofs should be considered by the developer. Furthermore, indigenous vegetation will be used during landscaping and the staff will be trained to implement good housekeeping techniques.

Portable chemical toilets will be utilized, that will be serviced privately or by the local municipality. Waste will be disposed at a licensed waste site (such as Hotazel, Kuruman or Kathu). The construction and hazardous waste will be removed to licensed landfill sites accepting such kinds of wastes. During the operational phase household waste will be removed to a licensed landfill site by a private contractor or by the local municipality. The relevant Local Municipality(s) was requested in a letter dated, 18 April 2016 to formally confirm that it has the capacity to provide the proposed development with these services for the lifetime of the project (20 years – refer to Appendix I. To date no feedback has been received from the Municipality.

### 3 LEGISLATIVE AND POLICY CONTEXT

---

This section aims to address the following requirements of the regulations:

**Appendix 2.** (2) A scoping report (...) must include-

(e) a description of the policy and legislative context within which the development is proposed including an identification of all legislation, policies, plans, guidelines, spatial tools, municipal development planning frameworks and instruments that are applicable to this activity and are to be considered in the assessment process;

#### 3.1 INTRODUCTION

Environmental decision making with regards to solar PV plants is based on numerous policy and legislative documents. These documents inform decisions on project level environmental authorisations issued by the National Department of Environmental Affairs (DEA) as well as comments from local and district authorities. Moreover, it is significant to note that they also inform strategic decision making reflected in IDPs and SDFs. Therefore, to ensure streamlining of environmental authorisations it is imperative for the proposed activity to align with the principles and objectives of key national, provincial and local development policies and legislation. The following acts and policies and their applicability to the proposed development are briefly summarised:

- The Constitution of the Republic of South Africa, 1996 (Act No. 108 of 1996)
- National Environmental Management Act, 1998 (Act No. 107 of 1998) [NEMA]
- The National Energy Act, 2008 (Act 34 of 2008)
- National Water Act, 1998 (Act No. 36 of 1998)
- National Environmental Management: Waste Act, 2008 (Act No. 59 of 2008)
- National Environmental Management: Air Quality Act, 2004 (Act No. 39 of 2004)
- The National Heritage Resources Act, 1999 (Act No. 25 of 1999)
- Conservation of Agricultural Resources Act, 1983 (Act No. 85 of 1983)
- Strategic Plan, 2015 – 2020 (2015)
- The White Paper on the Energy Policy of the Republic of South Africa (1998)
- The White Paper on Renewable Energy (2003)
- Integrated Resource Plan (IRP) for South Africa (2010-2030)

- Northern Cape Provincial Development and Resource Management Plan/ Provincial Spatial Development Framework (PSDF) (2012)
- Strategic Environmental Assessment (SEA) for wind and solar PV Energy in South Africa (2014)
- John Taolo Gaetsewe District Municipality Integrated Development Plan for 2012 – 2016
- Joe Morolong Local Municipality Integrated Development Plan for 2015/2016.

The key principles and objectives of each of the legislative and policy documents are briefly summarised in tables 3.1 and 3.2 to provide a reference framework for the implications for the proposed activity.



### 3.2 LEGISLATIVE CONTEXT

**Table 3.1:** Legislative context for the construction of photovoltaic solar plants

LEGISLATION	ADMINISTERING AUTHORITY	DATE	SUMMARY / IMPLICATIONS FOR PROPOSED DEVELOPMENT
<b>The Constitution of South Africa (Act No. 108 of 1996)</b>	National Government	1996	The Constitution is the supreme law of the Republic and all law and conduct must be consistent with the Constitution. The Chapter on the Bill of Rights contains a number of provisions, which are relevant to securing the protection of the environment. Section 24 states that “everyone has the right to (a) an environment that is not harmful to their health or well-being and (b) to have the environment protected, for the benefit of present and future generations, through reasonable legislative and other measures that – (i) prevent pollution and ecological degradation; (ii) promote conservation; and (iii) secure ecologically sustainable development and use of natural resources while promoting justifiable economic and social development. The Constitution therefore, compels government to give effect to the people’s environmental right and places government under a legal duty to act as a responsible custodian of the country’s environment. It compels government to pass legislation and use other measures to protect the environment, to prevent pollution and ecological degradation, promote conservation and secure sustainable development.
<b>The National Environmental Management Act (Act No. 107 of 1998)</b>	National and Provincial Department of Environmental Affairs	1998	NEMA provides for co-operative governance by establishing principles and procedures for decision-makers on matters affecting the environment. An important function of the Act is to serve as an enabling Act for the promulgation of legislation to effectively address integrated environmental management. Some of the principles in the Act are accountability; affordability; cradle to grave management; equity; integration; open information; polluter pays; subsidiary; waste avoidance and minimisation; co-operative governance; sustainable development; and environmental protection and justice.  The mandate for EIA lays with the National Environmental Management Act (107 of 1998) and the EIA Regulations No. 982, 983, 984, and 985 promulgated in terms of Section 24 of NEMA. The EIA Regulations determine that an Environmental Authorisation is required for certain listed activities,

---

			which might have a detrimental effect on the environment. This EIA was triggered by activity 11(i) and 28(ii) listed in Regulation R983 and activities 1 and 15 listed in Regulation R984, which requires a 'scoping and environmental impact assessment process.'
<b>The National Energy Act (Act No. 34 of 2008)</b>	Department of Minerals and Energy	2008	One of the objectives of the National Energy Act was to promote diversity of supply of energy and its sources. In this regard, the preamble makes direct reference to renewable resources, including solar: "To ensure that diverse energy resources are available, in sustainable quantities, and at affordable prices, to the South African economy, in support of economic growth and poverty alleviation, taking into account environmental management requirements (...); to provide for (...) increased generation and consumption of renewable energies..." (Preamble).
<b>The National Water Act (Act No. 36 of 1998)</b>	Department of Water Affairs (DWA)	1998	<p>Sustainability and equity are identified as central guiding principles in the protection, use, development, conservation, management and control of water resources. The intention of the Act is to promote the equitable access to water and the sustainable use of water, redress past racial and gender discrimination, and facilitate economic and social development. The Act provides the rights of access to basic water supply and sanitation, and environmentally, it provides for the protection of aquatic and associated ecosystems, the reduction and prevention of pollution and degradation of water resources.</p> <p>As this Act is founded on the principle that National Government has overall responsibility for and authority over water resource management, including the equitable allocation and beneficial use of water in the public interest, a person can only be entitled to use water if the use is permissible under the Act. Chapter 4 of the Act lays the basis for regulating water use.</p> <p>The site falls within the D41K quaternary drainage region, this drainage region falls under Zone A, which refers to the amount of water that may be taken from the ground water resource, per hectare. According to the Revision of General Authorisations in terms of Section 39 of the National Water Act of 1998 (Act No. 36 of 1998), Zone C indicates that no water may be abstracted from a ground water</p>

---

			resource without applying for a Water Use License. It should also be noted that if the development occurs within 500m from a wetland, a WULA may be required.
<b>National Environmental Management: Waste Act (Act No. 59 of 2008)</b>	Department of Environmental Affairs (DEA)	2008	<p>NEMWA has been developed as part of the law reform process enacted through the White Paper on Integrated Pollution and Waste Management and the National Waste Management Strategy (NWMS). The objectives of the Act relate to the provision of measures to protect health, well-being and the environment, to ensure that people are aware of the impact of waste on their health, well-being and the environment, to provide for compliance with the measures, and to give effect to section 24 of the Constitution in order to secure an environment that is not harmful to health and well-being.</p> <p>Regulations No. R921 (of 2013) promulgated in terms of Section 19(1) of the National Environmental Management: Waste Act (59 of 2008) determine that no person may commence, undertake or conduct a waste management activity listed in this schedule unless a license is issued in respect of that activity. It is not envisaged that a waste permit will be required for the proposed development.</p>
<b>National Environment Management: Air Quality Act (Act No. 39 of 2004)</b>	Department of Environmental Affairs (DEA)	2004	<p>The object of this Act is to protect the environment by providing reasonable measures for the protection and enhancement of the quality of air in the Republic; the prevention of air pollution and ecological degradation; and securing ecologically sustainable development while promoting justifiable economic and social development.</p> <p>Regulations No. R248 (of 31 March 2010) promulgated in terms of Section 21(1)(a) of the National Environmental Management Act: Air Quality Act (39 of 2004) determine that an Atmospheric Emission License (AEL) is required for certain listed activities, which result in atmospheric emissions which have or may have a detrimental effect on the environment. The Regulation also sets out the minimum emission standards for the listed activities. It is not envisaged that an Atmospheric Emission License will be required for the proposed development.</p>
<b>The National Heritage Resources Act</b>	South African Heritage	1999	The Act aims to introduce an integrated and interactive system for the management of the heritage resources, to promote good government at all levels, and empower civil society to nurture and conserve heritage resources so that they may be bequeathed to future generations and to lay down

<b>(Act No. 25 of 1999)</b>	Resources Agency (SAHRA)		<p>principles for governing heritage resources management throughout the Republic. It also aims to establish the South African Heritage Resources Agency together with its Council to co-ordinate and promote the management of heritage resources, to set norms and maintain essential national standards and to protect heritage resources, to provide for the protection and management of conservation-worthy places and areas by local authorities, and to provide for matters connected therewith.</p> <p>The Act protects and manages certain categories of heritage resources in South Africa. For the purposes of the Heritage Resources Act, a “heritage resource” includes any place or object of cultural significance. In this regard the Act makes provision for a person undertaking an activity listed in Section 28 of the Act to notify the resources authority. The resources authority may request that a heritage impact assessment be conducted if there is reason to believe that heritage resources will be affected.</p> <p>A case file has been opened on SAHRIS and all relevant documents will be submitted for their comments and approval.</p>
<b>Conservation of Agricultural Resources Act (Act No. 85 of 1983)</b>	National and Provincial Government	1983	<p>The objective of the Act is to provide for control over the utilization of the natural agricultural resources of the Republic in order to promote the conservation of the soil, the water sources and the vegetation and the combating of weeds and invader plants; and for matters connected therewith.</p> <p>Consent will be required from the Department of Agriculture in order to confirm that the proposed development is not located on high potential agricultural land and to approve the long term lease agreement.</p>

### 3.3 POLICY CONTEXT

**Table 3.2:** Policy context for the construction of solar PV plants

POLICY	ADMINISTERING AUTHORITY	DATE	SUMMARY / IMPLICATIONS FOR PROPOSED DEVELOPMENT
<b>Strategic Plan, 2015 – 2020</b>	Department of Energy	2015	<p>The strategic plan identifies six Departmental programmes. Programme 6 relates to clean energy. The purpose of this programme is to manage and facilitate the development and implementation of clean and renewable energy initiatives as well as Energy Efficiency Demand-Side Management (EEDSM). Strategic objective 6.3 relates to effective renewable energy: To ensure the integration of renewable energy into the mainstream energy supply of South Africa by planning &amp; coordinating initiatives &amp; interventions focused on the development &amp; improvement of the renewable energy market through:</p> <ul style="list-style-type: none"> <li>• facilitating the incorporation of renewable energy technologies into the Integrated Energy Plan (IEP) &amp; other key energy policy documents;</li> <li>• resource mapping;</li> <li>• establishing a conducive environment for the growth of decentralised (renewable energy based) embedded electricity generation;</li> <li>• providing up-to-date data on performance &amp; costs of renewable energy technologies as inputs to the IEP;</li> <li>• identify further development opportunities &amp; providing necessary support to other renewable energy technologies that have the potential to contribute to the electricity, heat &amp; transport sectors;</li> <li>• continuing support &amp; monitoring of renewable energy initiatives &amp; programmes that are already under way; and</li> <li>• implementing awareness campaigns to increase awareness of renewable energy &amp; its benefits within the public sector &amp; the general public.</li> </ul>

<b>The White Paper on the Energy Policy of the Republic of South Africa</b>	Department of Minerals and Energy	1998	<p>The White Paper on the Energy Policy of the Republic of South Africa establishes the international and national policy context for the energy sector, and identifies the following energy policy objectives:</p> <ul style="list-style-type: none"> <li>• Increasing access to affordable energy services</li> <li>• Improving energy governance</li> <li>• Stimulating economic development</li> <li>• Managing energy-related environmental and health impacts</li> <li>• Securing supply through diversity</li> <li>• Energy policy priorities</li> </ul> <p>The White Paper sets out the advantages of renewable energy and states that Government believes that renewables can in many cases provide the least cost energy service, particularly when social and environmental costs are included. The White Paper acknowledges that South Africa has neglected the development and implementation of renewable energy applications, despite the fact that the country's renewable energy resource base is extensive and many appropriate applications exist.</p> <p>The White Paper notes that renewable energy applications have specific characteristics that need to be considered. Advantages include:</p> <ul style="list-style-type: none"> <li>• Minimal environmental impacts in operation in comparison with traditional supply technologies; and</li> <li>• Generally lower running costs, and high labour intensities.</li> </ul> <p>Disadvantages include:</p> <ul style="list-style-type: none"> <li>• Higher capital costs in some cases;</li> <li>• Lower energy densities; and</li> <li>• Lower levels of availability, depending on specific conditions, especially with sun and wind based systems.</li> </ul>
---	-----------------------------------	------	---

<b>The White Paper on Renewable Energy</b>	Department of Minerals and Energy	2003	<p>This White Paper on Renewable Energy supplements the <i>White Paper on Energy Policy</i>, which recognizes that the medium and long-term potential of renewable energy is significant. This Paper sets out Government's vision, policy principles, strategic goals and objectives for promoting and implementing renewable energy in South Africa.</p> <p>The White Paper notes that while South Africa is well-endowed with renewable energy resources that have the potential to become sustainable alternatives to fossil fuels, these have thus far remained largely untapped. Government's long-term goal is the establishment of a renewable energy industry producing modern energy carriers that will offer in future years a sustainable, fully non-subsidised alternative to fossil fuels. The medium-term (10-year) target set in the White Paper is: <i>10 000 GWh (0.8 Mtoe) renewable energy contribution to final energy consumption by 2013, to be produced mainly from biomass, wind, solar and small-scale hydro. The renewable energy is to be utilised for power generation and non-electric technologies such as solar water heating and bio-fuels. This is approximately 4% (1667 MW) of the projected electricity demand for 2013 (41539 MW)</i> (Executive Summary, ix).</p>
<b>Integrated Resource Plan (IRP) for South Africa</b>	Department of Minerals and Energy	2010-2030	<p>The current iteration of the Integrated Resource Plan (IRP) for South Africa, after a first round of public participation in June 2010, led to the Revised Balanced Scenario (RBS) that was published in October 2010. The document outlines the proposed generation new build fleet for South Africa for the period 2010 to 2030. This scenario was derived based on the cost-optimal solution for new build options, which was then "balanced" in accordance with qualitative measures such as local job creation. In addition to all existing and committed power plants, the RBS included a nuclear fleet of 9,6GW; 6,3GW of coal; 11,4GW of renewables; and 11,0GW of other generation sources.</p> <p>A second round of public participation was conducted in November/December 2010, which led to several changes to the IRP model assumptions. The main changes were the disaggregation of renewable energy technologies to explicitly display solar photovoltaic (PV), concentrated solar power (CSP) and wind options; the inclusion of learning rates, which mainly affected 39renewable; and the adjustment of investment costs for nuclear units (a possible increase of 40%).</p>

Additional cost-optimal scenarios were generated based on the changes. The outcomes of these scenarios, in conjunction with the following policy considerations, led to the Policy-Adjusted IRP:

- The installation of 40 renewables were brought forward in order to accelerate a local industry;
- To account for the uncertainties associated with the costs of 40renewable and fuels, a nuclear fleet of 9,6GW was included in the IRP;
- The emission constraint of the RBS (275 million tons of carbon dioxide per year after 2024) was maintained; and
- Energy efficiency demand-side management (EEDSM) measures were maintained at the level of the RBS.

The Policy-Adjusted IRP includes the same amount of coal and nuclear new builds as the RBS, while reflecting recent developments with respect to prices for 40renewable. In addition to all existing and committed power plants (including 10GW committed coal), the plan includes 9,6GW of nuclear; 6,3GW of coal; 17,8GW of 40renewable; and 8,9GW of other generation sources. The Policy-Adjusted IRP has therefore resulted in an increase in the contribution from 40renewable from 11,4 GW to 17,8 GW.

<b>Northern Cape Provincial Development and Resource Management Plan</b>	Northern Cape Provincial Government	2012	<p>The Northern Cape Provincial Spatial Development Framework (further referred to as the PSDF) of 2012 in compliance with the Northern Cape Planning and Development Act 7 of 1998 (Chapter IV, Section 14), aims to “ensure that the use and allocation of the province’s resources, both renewable and non-renewable, are informed by a set of integrated and coordinated policies, objectives, implementation strategies, programmes and, where appropriate, projects aimed at:</p> <ul style="list-style-type: none"> <li>• setting and monitoring, where appropriate, measurable standards with regard to, amongst other, public access to health, safety, amenities, education and economic opportunity;</li> <li>• ensuring that the supply of public infrastructure is directed towards meeting the required standards in a prioritised, coordinated, sustainable and cost-effective way, in terms of capital and maintenance expenditure;</li> </ul>
--	-------------------------------------	------	--



- 
- ensuring the protection and sustainable utilisation of land, water and air where these are important for the maintenance of ecologically-sensitive systems or processes, areas of biological diversity, public health or public amenities;
  - providing an investment and expenditure programme coordinated with budgetary cycles and capable of securing financial and other resources from National Government and any other funding agencies as well as public/private sector partnerships; and
  - informing and guiding the preparation and implementation of district and local municipal infrastructure management plans and land development plans” (PSDF 2012:4).

The PSDF mainly aims to build a prosperous, sustainable growing provincial economy to firstly improve social development and to eradicate poverty. The PSDF adopted the International Union for Conservation of Nature’s (IUCN) mission as their main goal. This goal states that essential ecological processes are being maintained, that natural resources are being preserved and utilised in a sustainable manner, that the use of the biosphere are managed while also maintaining its potential for future generations.

The PSDF of 2012 highlights that renewable energy sources such as solar thermal and wind, comprise 25% of the Northern Cape’s energy generation capacity by the year 2020, and should be progressively phased in as appropriate into the province. The PSDF further sets out energy objectives, which include the following:

- To promote the development of renewable energy supply schemes;
- To enhance the efficiency of Eskom’s power station at the Vanderkloof power station;
- Reinforce additional electricity supply especially renewable energy projects; and
- Develop and implement innovative energy technologies to improve access to reliable, sustainable and affordable energy services. Also recognize that the objective should be to obtain sustainable economic growth.

Lastly, the PSDF notes that the Northern Cape need to develop large-scale renewable energy supply schemes in order to address the growing demand in energy and to promote a green economy in the province.

---

<b>Strategic Environmental Assessment (SEA) for wind and solar PV Energy in South Africa</b>	Department of Environmental Affairs	2014	<p>The Department of Environmental Affairs (DEA) has committed to contribute to the implementation of the National Development Plan and National Infrastructure Plan by undertaking Strategic Environmental Assessments (SEAs) to identify adaptive processes that integrate the regulatory environmental requirements for Strategic Integrated Projects (SIPs) while safeguarding the environment. The wind and solar photovoltaic (PV) SEA was accordingly commissioned by DEA in support of SIP 8, which aims to facilitate the implementation of sustainable green energy initiatives.</p> <p>This SEA identifies areas where large scale wind and solar PV energy facilities can be developed in terms of SIP 8 and in a manner that limits significant negative impacts on the environment, while yielding the highest possible socio-economic benefits to the country. These areas are referred to as Renewable Energy Development Zones (REDZs).</p> <p>The REDZs also provide priority areas for investment into the electricity grid. Currently one of the greatest challenges to renewable energy development in South Africa is the saturation of existing grid infrastructure and the difficulties in expanding the grid. Proactive investment in grid infrastructure is thus likely to be the most important factor determining the success of REDZs.</p> <p>Although it is intended for the SEA to facilitate proactive grid investment in REDZs, such investment should not be limited to these areas. Suitable wind and solar PV development should still be promoted across the country and any proposed development must be evaluated on its own merit. The proposed site does not fall within a REDZs.</p>
<b>John Taolo Gaetsewe District Municipality Integrated</b>	John Taolo Gaetsewe District Municipality	2012 - 2016	<p>The John Taolo Gaetsewe District Municipality's Integrated Development Plan for 2012-2016 (further referred to as "the Plan") highlights the achievements of the municipality. One of these challenges is that the growth in access to electricity as a primary source of energy in the district has been spectacular. Over the period of 2001-2007 electricity as a source of energy has increased to 90% in the district municipality. Thus there, has been a growth of 31.8 % over six (6) years.</p>

<b>Development Plan (IDP)</b>	<p>The Plan goes further by stating that the development priorities of the municipality are:</p> <ul style="list-style-type: none"> <li>• Priority 1: Water and Sanitation;</li> <li>• Priority 2: Roads and Transport;</li> <li>• Priority 3: Local Economic Development (LED);</li> <li>• Priority 4: Land Development and Reform;</li> <li>• Priority 5: Integrated Human Settlements;</li> <li>• Priority 6: Sustainable Development Orientated Municipalities;</li> <li>• Priority 7: Environmental Management, Climate Change and Municipal Health;</li> <li>• Priority 8: Disaster Management; and</li> <li>• Priority 9: HIV/Aids and TB.</li> </ul> <p>One of the long-term strategic objectives of the district, according to the Plan, that particularly relate to the proposed project is “Environmental, Climate Change and Municipal Health”. Under this strategic objective one of the common issues that affect the district identified by the Plan is the use of Solar energy for future purposes. The Plan goes further by stating that “serious investment in and exploitation of renewable sources of energy has not only resulted in the district becoming self-reliant in the generation of electricity, but seen it make a sizeable injection on the national electricity grid”.</p> <p>Furthermore, the plan describes the local economic development strategy of the district. Key thrusts were identified. Thrust 5 (Industrial Development) relate to the proposed project. This thrust refers to the programmes that relate to the manufacturing projects identified and the associated enabling public sector interventions. This thrust also refers to the general improvement in living conditions, infrastructure and overall economic growth, which should serve as a boost of potential in this sector. An example of these projects includes solar energy plants.</p>
-------------------------------	--

<b>Joe Morolong Local Municipality Integrated Development Plan (IDP)</b>	Joe Morolong Local Municipality	2015- 2016	<p>The vision of the Joe Morolong Local Municipality according to the Integrated Development Plan for 2015/2016 (further referred to as the Plan) is to ensure a wealthy and prosperous local community with equal access to basic services and sustainable development opportunities. The Plan also identifies the mission of the municipality as: to commit themselves to developing communities in a sustainable and democratic manner, with the scope of affordability with reference to participation in all decisions affecting their lives, basic service delivery by the municipality and socio-economic development opportunities within a safe and healthy environment.</p> <p>The Plan is the process through which the municipality prepares a strategic developmental plan, which is the principal strategic development plan. This Plan also crosses departmental divisions by linking the physical, social, institutional and economic components of planning and development structures. It also integrates and aligns planning in the different sectors of government, thereby enforcing and upholding the spirit of co-operative governance in the public sector. The Plan makes the following policy pronouncements and performance targets that intersect with developmental mandates assigned to local government. Two of these developing imperatives that relate to the proposed project is to produce sufficient energy to support industry at competitive prices and the investment in public infrastructure focusing on transport, energy and water.</p> <p>The Plan further states that the municipality need to take these issues into account to achieve the objectives set out by government and that the municipality would do more in improving the lives of communities.</p>
--	---------------------------------------	---------------	---

### 3.4 OTHER LEGISLATION

Other legislation mainly refers to the following:

- Planning legislation governing the rezoning process and approval of the layout plan.
- Design standards and legislation for services provision such as water, sewerage, electricity, etc.
- Municipal bylaws related to building plans, building regulations, etc.

### 3.5 RELEVANT GUIDANCE

The following guidance was considered in conducting the EIA:

- The Equator principles III (2013)<sup>2</sup>
- World Bank Group Environmental, Health and Safety General Guidelines (EHS Guidelines) (2007)
- Environmental, Health, and Safety Guidelines for Electric Power Transmission and Distribution (2007)
- International Finance Corporation's Policy on Environmental and Social Sustainability (2012)
- DEA. (2013). Draft National Renewable Energy Guideline. Department of Environmental Affairs, Pretoria, South Africa
- DEA, (2012), Guideline 5 – Final companion to the National Environmental Management Act (NEMA) Environmental Impact Assessment (EIA) Regulations of 2010
- DEA, (2012), Guideline 7 – Public participation in the Environmental Impact Assessment process
- DEA, (2012), Guideline 9 – Need and desirability
- DEAT, (2006), Guideline 3 – General guide to the Environmental Impact Assessment Regulations
- DEAT, (2006), Guideline 4 – Public participation in support of the Environmental Impact Assessment Regulations
- DEAT, (2006), Guideline 5 – Assessment of alternatives and impacts in support of the Environmental Impact Assessment Regulations
- BirdLife, (2015). Guidelines to minimise the impact on birds of Solar Facilities and Associated Infrastructure in South Africa

### 3.6 CONCLUSION

The EIA was undertaken in accordance with the EIA Regulations (2014) published in GNR 982, in terms of Section 24(5) and 44 of the NEMA as amended as well as all relevant National legislation, policy documents, national guidelines, the World Bank EHS Guidelines, the IFC Performance Standards, and the Equator Principles.

---

<sup>2</sup> Although this report is not written in terms of the Equator Principles (EPs), it fully acknowledges that the EPs will need to be complied with should funding for the project be required.

## 4 THE NEED AND DESIRABILITY

---

This section aims to address the following requirements of the regulations:

**28. (1)** A scoping report (...) must include – (i) a description of the need and desirability of the proposed activity.

### 4.1 THE NEED FOR THE PROPOSED ACTIVITY

The proposed activity is a direct result of the growing demand for electricity and the need for renewable energy in South Africa. According to Eskom, the demand for electricity in South Africa has been growing at approximately 3% per annum. This growing demand, fuelled by increasing economic growth and social development, is placing increasing pressure on South Africa's existing power generation capacity. Coupled with this, is the growing awareness of environmentally responsible development, the impacts of climate change and the need for sustainable development.

Over 90% of South Africa's electricity generation is coal based, the World Bank estimates that these results in an annual, per capita carbon emission of ~8.9 tons per person. Based on 2008 fossil-fuel CO<sub>2</sub> emissions statistics released by the Carbon Dioxide Information Analysis Centre, South Africa is the 13th largest carbon dioxide emitting country in the world and the largest emitter in Africa (Boden, et al. 2011).

The primary rationale for the proposed solar PV facility is to add new generation capacity from renewable energy to the national electricity mix and to aid in achieving the goal of 42% share of all new installed generating capacity being derived from renewable energy forms, as targeted by the Department of Energy (DoE) (Integrated Resource Plan 2010-2030). In terms of the Integrated Resource Plan (IRP), approximately 8.4GW of the renewable energy mix is planned to be the new installed capacity generated from solar PV technologies over the next thirty years.

The establishment of the photovoltaic solar facility will significantly contribute to achieving this objective and will also address some of the objectives identified by the Joe Morolong Local Municipality's Integrated Development Plan such as ensuring economic growth in the region and creating long term employment (IDP, 2015-16).

### 4.2 THE DESIRABILITY OF THE PROPOSED ACTIVITY

The facility's contribution towards sustainable development and the associated benefits to society in general is discussed below:

- Lesser dependence on fossil fuel generated power - The deployment of the facility will have a positive macro-economic impact by reducing South Africa's dependence on fossil fuel generated power and assisting the country in meeting its growing electricity demand.

- Increased surety of supply - By diversifying the sources of power in the country, the surety of supply will increase. The power demands of South Africa are ever increasing and by adding solar power this demand can be met, even exceeded without increasing pollution in relation to the use of fossil fuels. The project has the potential of “securing” economic activity by assisting in removing supply constraints if Eskom generation activities result in a supply shortfall. When supply is constrained it represents a limitation to economic growth. When a supply reserve is available, it represents an opportunity for economic growth.
- Local economic growth - The proposed project will contribute to local economic growth by supporting industry development in line with provincial and regional goals and ensuring advanced skills are drawn to the Northern Cape Province. The project will likely encounter widespread support from government, civil society and businesses, all of whom see potential opportunities for revenues, employment and business opportunities locally. The development of the photovoltaic solar facility will in turn lead to growth in tax revenues for local municipalities and sales of carbon credits, resulting in increased foreign direct investment. The location of the proposed development within the Joe Morolong Local Municipality is desirable since this municipal area can be regarded as the poorest area in the district (Joe Morolong IDP, 2015/2016).
- Lower costs of alternative energy - An increase in the number of solar facilities commissioned will eventually reduce the cost of the power generated through solar facilities. This will contribute to the country’s objective of utilising more renewable energy and less fossil fuel based power sources. It will assist in achieving the goal to generate 10 000 GWh of electricity from renewable energy by 2015 and the reduction of South Africa’s GHG emissions by approximately 34% below the current emissions baseline by 2020.
- Reduction in greenhouse gas emissions - The additional power supplied through solar energy will reduce the reliance on the combustion of fossil fuels to produce power. The South African electricity grid is predominantly coal-fired and therefore GHG emissions intensive (coal accounts for more than 92% of the fuel used in South Africa’s electricity generation). The reduction of GHG emissions as a result of the project implementation will be achieved due to reduction of CO<sub>2</sub> emissions from combustion of fossil fuel at the existing grid-connected power plants and plants which would likely be built in the absence of the project activity.
- CDM Project - A solar energy facility also qualifies as a Clean Development Mechanism (CDM) project (i.e. a financial mechanism developed to encourage the development of renewable technologies).
- Climate change mitigation - On a global scale, the project makes a contribution to greenhouse gas emission reduction and therefore contributes toward climate change mitigation.
- Reduced environmental impacts - The reduction in electricity consumed from the grid will not only result in a reduction in greenhouse gas emissions, but also the prevention

of negative impacts associated with coal mining. For example, coal power requires high volumes of water, in areas of South Africa where water supply is already overstretched and water availability is highly variable. Photovoltaic solar energy technology also does not produce the sulphur emissions, ash or coal mining concerns associated with conventional coal fired electricity generation technologies resulting in a relatively low level of environmental impacts. It is a clean technology which contributes toward a better quality environment for employees and nearby communities.

- Social benefits - The project activity is likely to have significant long-term, indirect positive social impacts that may extend to a regional and even national scale. The larger scale impacts are to be derived in the utilization of solar power and the experience gained through the construction and operation of the power plant. In future, this experience can be employed at other similar solar installations in South Africa.
- Provision of job opportunities - The main benefit of the proposed development operating in the area is that local companies or contractors will be hired for the duration of the construction period. The operational phase will provide permanent job opportunities to the local communities from the surrounding area since security guards and general labourers will be required on a full time basis. Approximately 435 employment opportunities will be created during the construction and operational phases.
- Indirect socio-economic benefits - The increase in the demand for services such as accommodation, transportation, security, general maintenance and catering will generate additional indirect socio-economic benefits for the local community members.
- Effective use of resources - Because of predominantly the climate limitations, the site is totally unsuitable for cultivated crops, and viable agricultural land use is limited to grazing only. The grazing capacity on AGIS is classified as 18-21 hectares per large stock unit. The proposed development in this specific area will generate alternative land use income through rental for energy facility, which will have a positive impact on agriculture. It will provide the farming enterprise with increased cash flow and rural livelihood, and thereby improve the financial sustainability of agricultural activities.



## 5 DESCRIPTION OF ENVIRONMENTAL ISSUES

---

This section aims to address the following requirements of the regulations:

**Appendix 2.** (2) A scoping report (...) must include-

- (h) a full description of the process followed to reach the proposed preferred activity, site and location within the site, including –
  - (i) details of all the alternatives considered;
  - (ii) details of the public participation process undertaken in terms of regulation 41 of the Regulations, including copies of the supporting documents and inputs;
  - (iii) a summary of the issues raised by interested and affected parties, and an indication of the manner in which the issues were incorporated, or the reasons for not including them.
  - (iv) the environmental attributes associated with the alternatives focusing on the geographical, physical, biological, social, economic, heritage and cultural aspects;
  - (ix) the outcome of the site selection matrix;
  - (x) if no alternatives, including alternative locations for the activity were investigated, the motivation for not considering such and
  - (xi) a concluding statement indicating the preferred alternatives, including preferred location of the activity;

### 5.1 CONSIDERATION OF ALTERNATIVES

The DEAT 2006 guidelines on ‘assessment of alternatives and impacts’ proposes the consideration of four types of alternatives namely, the no-go, location, activity, and design alternatives. It is however, important to note that the regulation and guidelines specifically state that only ‘feasible’ and ‘reasonable’ alternatives should be explored. It also recognizes that the consideration of alternatives is an iterative process of feedback between the developer and EAP, which in some instances culminates in a single preferred project proposal.

An initial site assessment (refer to Appendix G1) was conducted by the developer on the Remaining Extent of the farm Kameel Aar 315 and the farm was found favorable due to its proximity to grid connections, solar radiation, ecology, lack of wetland features and relative flat terrain. The site selection also took the site geology, land capability, grazing capacity, water availability and land use into consideration before deciding on the specific site. From the information obtained, a single preferred alternative has emerged (Subsolar, 2016).

The following sections explore different types of alternatives in relation to the proposed activity in more detail.

### 5.1.1 No-go alternative

This alternative considers the option of 'do nothing' and maintaining the status quo. The description provided in section 3 of this report could be considered the baseline conditions (status quo) to persist should the no-go alternative be preferred. The site is currently zoned for agricultural land uses. Should the proposed activity not proceed, the site will remain unchanged and will continue to be used for grazing for game and sheep (refer to the photographs of the site). However, the potential opportunity costs in terms alternative land use income through rental for energy facility and the supporting social and economic development in the area would be lost.

### 5.1.2 Location alternatives

This alternative asks the question, if there is not, from an environmental perspective, a more suitable location for the proposed activity. No other properties have at this stage been secured by Kagiso Solar Power Plant (RF) (Pty) Ltd. in the Hotazel area to potentially establish solar facilities. From a local perspective, the Remaining Extent of the farm Kameel Aar 315 is preferred due to its suitable climatic conditions, topography (i.e. in terms of slope), environmental conditions (i.e. agricultural potential, ecological sensitivity and archaeology), proximity to a grid connection point (i.e. for the purpose of electricity evacuation), as well as site access (i.e. to facilitate the movement of machinery, equipment, infrastructure and people during the construction phase).

The proposed development falls within an area used for grazing and the site is therefore considered to have limited environmental sensitivity as a result. The National Department of Agriculture (2006) classified land capability into two broad categories, namely land suited to cultivation (Classes I – IV) and land with limited use, generally not suited to cultivation (Classes V – VIII). The site falls within Class 7 and therefore the agricultural potential of the site is limited and it is highly unlikely that the change in land use will impact significantly on agricultural production (refer to figure 3 for an illustration of the land capability classification).

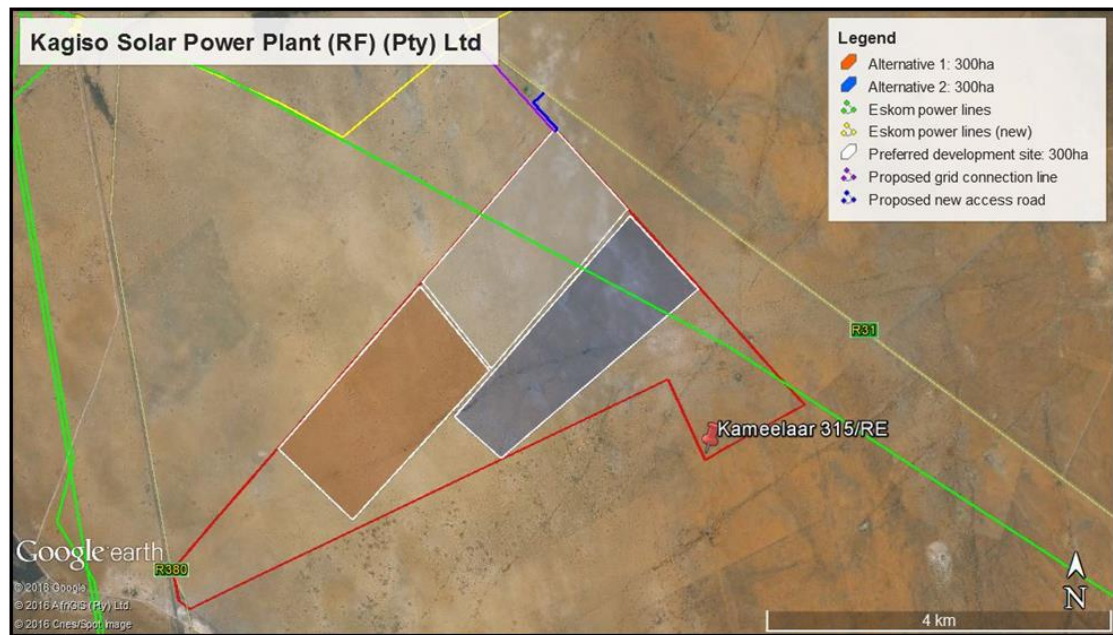
Three possible areas were identified on the Remaining Extent of the farm Kameel Aar 315 for a proposed solar plant – refer to figure 9. Each of these portions are more than 250ha in extent. The areas identified are as follows:

**Preferred development site (white portion):** This is the preferred option since there are no pans on the site and the terrain is flat. This area would also require the shortest power line and access route.

**Alternative 1 (orange portion):** This site contains a rocky outcrop which will make construction very difficult and would require a much longer power line and access road to be constructed. Due to these reasons this portion was not subject to any further investigations.

**Alternative 2 (blue portion):** This site also contains rocky outcrops and would also require a longer power line route. Due to these reasons this portion was not subject to any further investigations. The preferred site on the Remaining Extent of the farm Kameel Aar 315 has limited environmental sensitive features and will be the only location alternative that will be assessed in further detail. Provision was made to assess 300 hectares on the farm although it

is envisaged that only 250 hectares will be developed. The additional area is to make provision for any sensitive environmental features that may arise as a result of the EIA proses.

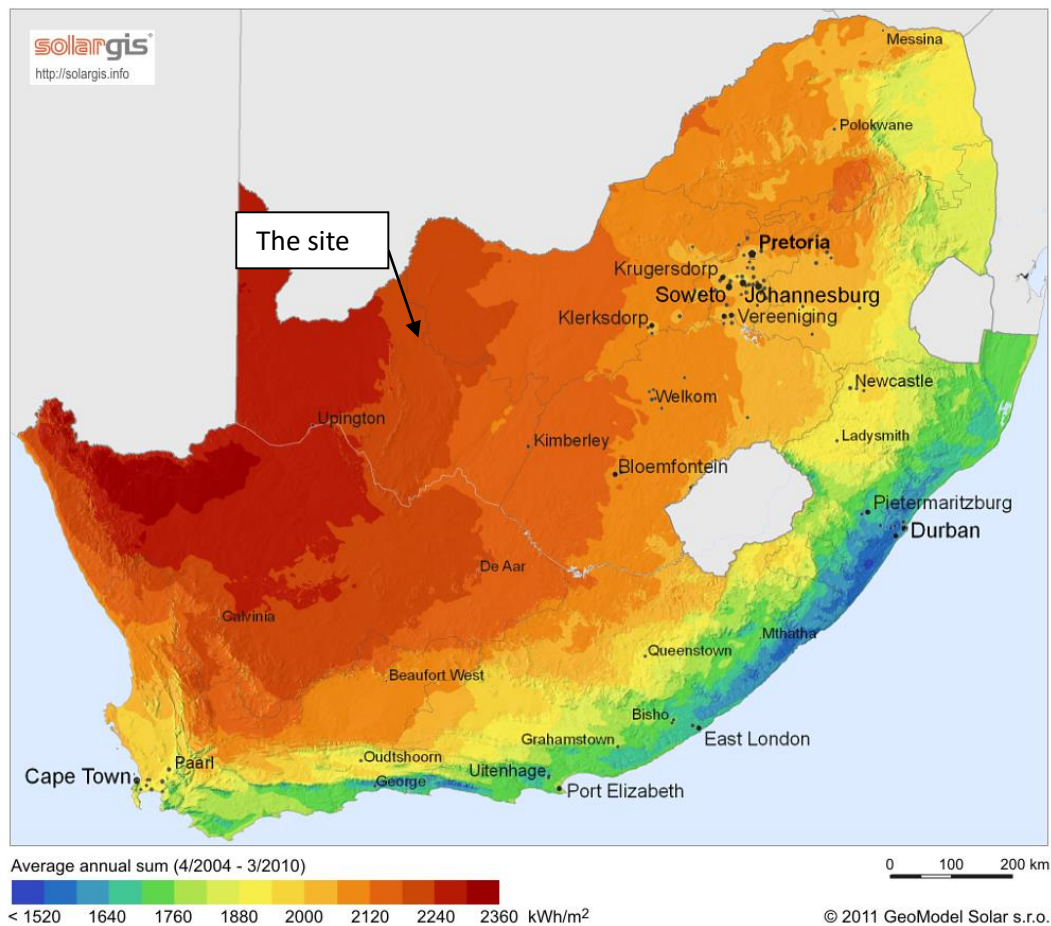


**Figure 9:** Location alternatives on the Remaining Extent of the farm Kameel Aar No. 315

### 5.1.3 Activity alternatives

The scoping process also needs to consider if the development of a solar PV facility would be the most appropriate land use for the particular site.

Photovoltaic (PV) solar facility – Kagiso Solar Power Plant (RF) (Pty) Ltd. is part of a portfolio of solar PV projects throughout South Africa. Kagiso Solar Power Plant (RF) (Pty) Ltd. is of the opinion that solar PV technology is perfectly suited to the site, given the high irradiation values for the Hotazel area – refer to figure 10.



**Figure 10:** Horizontal irradiation for South Africa (SolarGIS, 2011)

The technology furthermore entails low visual impacts, have relatively low water requirements, is a simple and reliable type of technology and all of the components can be recycled.

Wind energy facility - Due to the local climatic conditions a wind energy facility is not considered suitable as the area does not have the required wind resource. Furthermore, the applicant has opted for the generation of electricity via solar power rather than the use of wind turbines. This alternative is therefore regarded as not feasible and will not be evaluated further in this report.

Concentrated solar power (CSP) technology - CSP technology requires large volumes of water and this is a major constraint for this type of technology in the proposed project area. While the irradiation values are high enough to generate sufficient solar power, the water constraints render this alternative not feasible. Therefore, this alternative will not be considered further in this report.

#### 5.1.4 Technical alternatives

It is expected that generation from the facility will tie in with a new 132kV power line. A transmission line will be constructed within 36m wide servitude towards the new power line which is the preferred alternative since it follows the shortest route (approximately 1.5km).

The 132kV overhead transmission line is the only preferred alternative for the applicant due to the following reasons:

Overhead Transmission Lines - Overhead lines are less costly to construct than underground lines. Therefore, the preference with overhead lines is mainly on the grounds of cost. Overhead lines allow high voltage operations and the surrounding air provides the necessary electrical insulation to earth. Further, the surrounding air cools the conductors that produce heat due to lost energy (Swingler et al, 2006).

The overall weather conditions in the Northern Cape Province are less likely to cause damage and faults on the proposed overhead transmission power line. Nonetheless, if a fault occurs, it can be found quickly by visual means using a manual line patrol. Repair to overhead lines is relatively simple in most cases and the line can usually be put back into service within a few days. In terms of potential impacts caused by overhead transmission lines include visual intrusion and threats to sensitive habitat (where applicable).

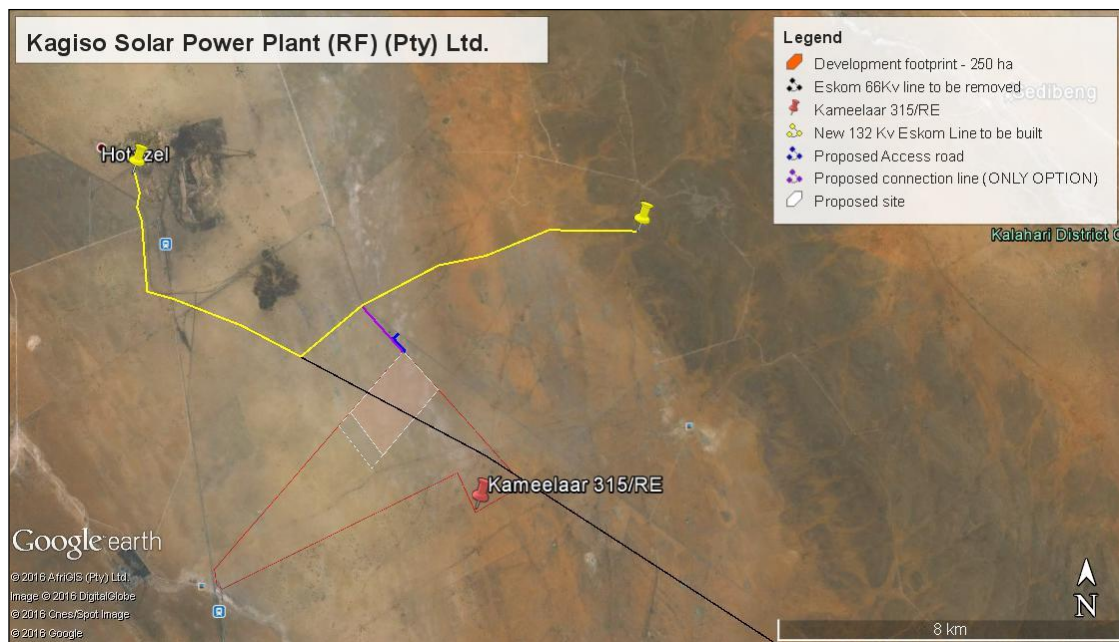
Underground Transmission Lines - Underground cables have generally been used where it is impossible to use overhead lines for example because of space constraints. Underground cables are oil cooled and are also at risk of groundwater contamination. Maintenance is also very difficult on underground lines compared to overhead lines. When a fault occurs in an underground cable circuit, it is almost exclusively a permanent fault due to poor visibility. Underground lines are also more expensive to construct than overhead lines.

#### **5.1.5 Design and layout alternatives**

Design alternatives were considered throughout the planning and design phase (i.e. what would be the best design option for the development?). In this regard discussions on the design were held between the EAP and the developer. The layout plan will be submitted as part of the Environmental Impact Report, indicating the preferred location on site for the proposed development. Three alternative sites on the same farm were identified but after the initial site assessment the alternative sites were ruled out and the EIA will therefore only focus on the single preferred site – refer to figure 11.

It is envisaged that the following environmental features will need to be considered:

- How to accommodate any protected tree or plant species.



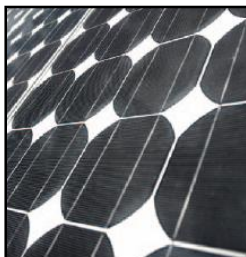
**Figure 11:** Preferred site on Remaining Extent of the farm Kameel Aar No. 315

### 5.1.6 Technology alternatives

There are several types of semiconductor technologies currently available and in use for PV solar panels. Two, however, have become the most widely adopted, namely crystalline silicon and thin film. These technologies are discussed in more detail below:

#### Crystalline (high efficiency technology at higher cost):

Crystalline silicon panels are constructed by first putting a single slice of silicon through a series of processing steps, creating one solar cell. These cells are then assembled together in multiples to make a solar panel. Crystalline silicon, also called wafer silicon, is the oldest and the most widely used material in commercial solar panels. Crystalline silicon modules represent 85-90% of the global annual market today. There are two main types of crystalline silicon panels that can be considered for the solar facility:



- Mono-crystalline Silicon - mono-crystalline (also called single crystal) panels use solar cells that are cut from a piece of silicon grown from a single, uniform crystal. Mono-crystalline panels are among the most efficient yet most expensive on the market. They require the highest purity silicon and have the most involved manufacturing process.



- Poly-crystalline Silicon – poly-crystalline panels use solar cells that are cut from multifaceted silicon crystals. They are less uniform in appearance than mono-crystalline cells, resembling pieces of shattered glass. These are the most common solar panels on the market, being less expensive than mono-crystalline silicon. They are also less efficient,



though the performance gap has begun to close in recent years (First Solar, 2011).

Thin film (low-cost technology with lower efficiency):

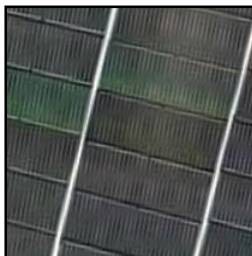
Thin film solar panels are made by placing thin layers of semiconductor material onto various surfaces, usually on glass. The term *thin film* refers to the amount of semiconductor material used. It is applied in a thin film to a surface structure, such as a sheet of glass. Contrary to popular belief, most thin film panels are not flexible. Overall, thin film solar panels offer the lowest manufacturing costs, and are becoming more prevalent in the industry. Thin films currently account for 10-15% of global PV module sales. There are three main types of thin film used:



- Cadmium Telluride (CdTe) - CdTe is a semiconductor compound formed from cadmium and tellurium. CdTe solar panels are manufactured on glass. They are the most common type of thin film solar panel on the market and the most cost-effective to manufacture. CdTe panels perform significantly better in high temperatures and in low-light conditions.



- Amorphous Silicon - Amorphous silicon is the non-crystalline form of silicon and was the first thin film material to yield a commercial product, first used in consumer items such as calculators. It can be deposited in thin layers onto a variety of surfaces and offers lower costs than traditional crystalline silicon, though it is less efficient at converting sunlight into electricity.



- Copper, Indium, Gallium, Selenide (CIGS) - CIGS is a compound semiconductor that can be deposited onto many different materials. CIGS has only recently become available for small commercial applications, and is considered a developing PV technology (First Solar, 2011).

The technology that (at this stage) proves more feasible and reasonable with respect to the proposed solar facility is crystalline silicon panels, due to it being non-reflective, more efficient, and with a higher durability. However, due to the rapid technological advances being made in the field of solar technology the exact type of technology to be used will only be confirmed at the onset of the project.

## 5.2 PUBLIC PARTICIPATION PROCESS

The following sections provide detailed information on the public participation process conducted in terms of Regulations 39 to 44.

### 5.2.1 General

The public participation process was conducted strictly in accordance with Regulations 39 to 44. The following three categories of variables were taken into account when deciding the required level of public participation:

- The scale of anticipated impacts
- The sensitivity of the affected environment and the degree of controversy of the project
- The characteristics of the potentially affected parties

Since the scale of anticipated impacts is low, the low environmental sensitivity of the site and the fact that no conflict was foreseen between potentially affected parties, no additional public participation mechanisms were considered at this stage of the process. The following actions have already been taken:

➤ Newspaper advertisement

Since the proposed development is unlikely to result in any impacts that extend beyond the municipal area where it is located, it was deemed sufficient to advertise in a local newspaper. An advertisement was placed in English in the local newspaper (Kalahari Bulletin) on the 17 March 2016 (see Appendix B) notifying the public of the EIA process and requesting Interested and Affected Parties (I&APs) to register with, and submit their comments to Environamix Environmental Consultants. I&APs were given the opportunity to raise comments within 30 days of the advertisement.

➤ Site notices

Site notices were placed on site in English on 28 February 2016 to inform surrounding communities and immediately adjacent landowners of the proposed development. I&APs were given the opportunity to raise comments by 18 April 2016. Photographic evidence of the site notices is included in Appendix C.

➤ Direct notification of identified I&APs

Identified I&APs, including key stakeholders representing various sectors, were directly informed of the proposed development via registered post and emails on 17 March 2016 and were requested to submit comments by 20 April 2016. For a complete list of stakeholder details see Appendix D and for proof of registered post see Appendix E. The consultees included:

- Northern Cape Department of Environmental Affairs and Nature Conservation
- The Department of Energy
- The Department of Water Affairs and Sanitation
- The National Department of Agriculture

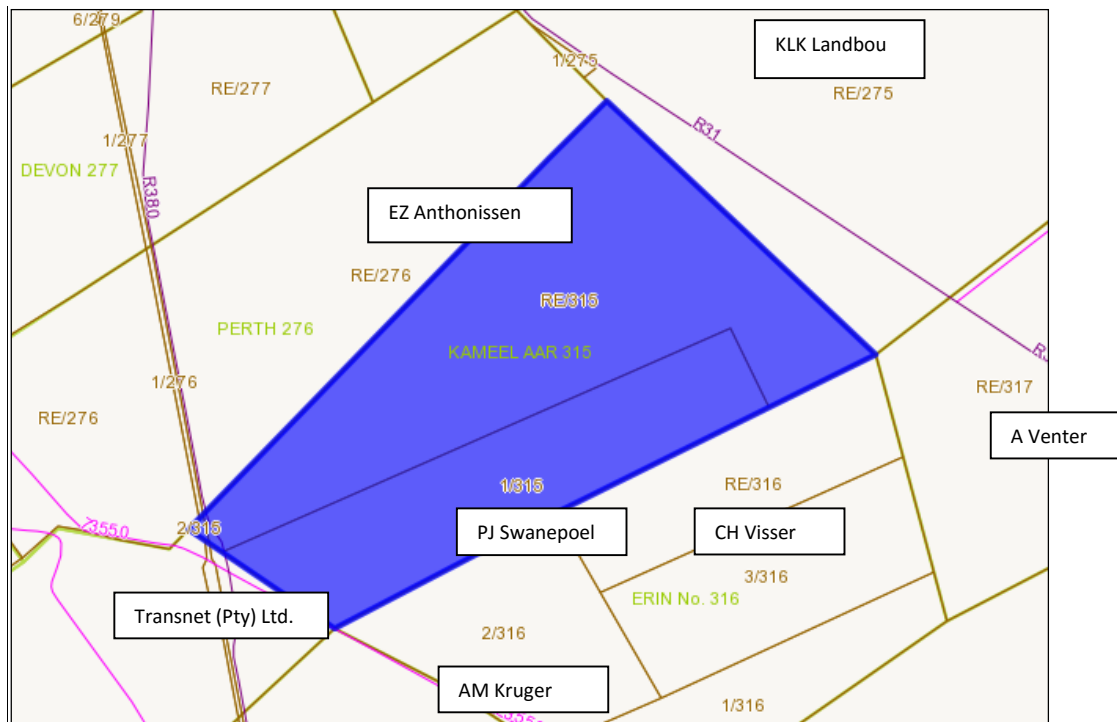


- The Northern Cape Department of Agriculture, Forestry and Fisheries
- The South African Heritage Resources Agency (SAHRA)
- The Provincial Heritage Resources Agency (PHRA), Northern Cape
- Passenger Rail Agency of South Africa (PRASA)
- South African National Roads Agency (SANRAL)
- SENTECH
- Department of Communications
- Department of Mineral Resources NC
- Transnet
- ESKOM
- National Energy Regulator of South Africa (NERSA)
- The Wildlife and Environment Society of South Africa (WESSA)
- The Municipal Manager at the John Taolo Gaetsewe District Municipality
- The Municipal Manager at the Joe Morolong Local Municipality
- The Local Councilor at the Joe Morolong Local Municipality
- The Civil Aviation Authority (CAA)
- The Northern Cape Department of Public Works, Roads and Transport
- Leads 2 Business – Melanie Miles
- Land owner – Mr. Hendrik Venter

It was expected from I&APs to provide their inputs and comments by 20 April 2016. To date comments have been received from The Civil Aviation Authority and Leads2Business.

➤ Direct notification of surrounding land owners and occupiers

Written notices were also provided to all surrounding land owners and occupiers on 17 March 2016. The Joe Morolong Local Municipality and other local property owners were contacted to obtain the contact details of the surrounding land owners; Seven farmer's contact details could be obtained – refer to figure 12. The surrounding land owners were given the opportunity to raise comments by 20 April 2016. To date no one has registered as an I&AP (see Appendix F for written comments). For a list of surrounding land owners see Appendix D.



**Figure 12: Surrounding Land Owners**

➤ Circulation of Draft Scoping Report

The following registered I&APs and State Departments were informed of the availability of the Draft Scoping Report on 19 May 2016.

- Northern Cape Department of Environmental Affairs and Nature Conservation
- The Department of Energy
- The Department of Water Affairs and Sanitation
- The National Department of Agriculture
- The South African Heritage Resources Agency (SAHRA)
- The Provincial Heritage Resources Agency (PHRA), Northern Cape
- Passenger Rail Agency of South Africa (PRASA)
- South African National Roads Agency (SANRAL)
- SENTECH
- Department of Communications
- The Northern Cape Department of Mineral Resources
- Transnet
- ESKOM
- National Energy Regulator of South Africa (NERSA)
- The Wildlife and Environment Society of South Africa (WESSA)

- The Municipal Manager at the Joe Morolong Local Municipality
- The Local Councilor at the Joe Morolong Local Municipality
- The Civil Aviation Authority (CAA)
- The Northern Cape Department of Public Works, Roads and Transport
- Land owner – Mr. Hendrik Venter

It was expected from I&APs to provide their inputs and comments within 30 days after receipt of the notification or copy of the Draft report (20 June 2016). To date SAHRA and SANRAL provided comments (see Appendix F for written comments).

➤ Public participation meeting

All I&AP's were invited to attend the public meeting to be held at the coordinates: (27°14'25.20"S and 23°01'20.88"E) of the site (near Hotazel) on 23 June 2016 at 13:00 PM. The public meeting will be an opportunity to share information regarding the proposed development and provide I&APs with an opportunity to raise any issues and provide comments. An advertisement was placed in English in the local newspaper (Kalahari Bulletin) on 16 June 2016 to notify the public of the public meeting. The following key stakeholders were also directly informed of the public meeting via email on 22 June 2016:

- Northern Cape Department of Environmental Affairs and Nature Conservation
- The Department of Energy
- The Department of Water Affairs and Sanitation
- The National Department of Agriculture
- The South African Heritage Resources Agency (SAHRA)
- The Provincial Heritage Resources Agency (PHRA), Northern Cape
- Passenger Rail Agency of South Africa (PRASA)
- South African National Roads Agency (SANRAL)
- SENTECH
- Department of Communications
- The Northern Cape Department of Mineral Resources
- Transnet
- ESKOM
- National Energy Regulator of South Africa (NERSA)
- The Wildlife and Environment Society of South Africa (WESSA)
- The Municipal Manager at the Joe Morolong Local Municipality

- The Local Councilor at the Joe Morolong Local Municipality
- The Civil Aviation Authority (CAA)
- The Northern Cape Department of Public Works, Roads and Transport
- Leads2Business – Ms. Melanie Miles
- Land owner – Mr. Hendrik Venter

The attendance register for the public meeting is attached as Appendix I.

### 5.2.2 Consultation process

Regulation 41 requires that the municipality, relevant ward councillor and any organ of state having jurisdiction in respect of any aspect of the activity should be given written notice of the activity. A complete list of all the consultees who received written notice as well as proof of correspondence is attached as Appendices D and E.

### 5.2.3 Registered I&APs

I&APs include all stakeholders who deem themselves affected by the proposed activity. According to Regulation 43(1) *“A registered interested and affected party is entitled to comment, in writing, on all reports or plans submitted to such party during the public participation process contemplated in these Regulations and to bring to the attention of the proponent or applicant any issues which that party believes may be of significance to the consideration of the application, provided that the interested and affected party discloses any direct business, financial, personal or other interest which that party may have in the approval or refusal of the application.”*

### 5.2.4 Issues raised by IAPs and consultation bodies

Table 5.1 summarises the comments received from consultation bodies to date. The full wording and original correspondence is included in Appendix F.

**Table 5.1:** Issues raised by key consultation bodies

Organisation	Person	Written comment (see Appendix F)
SAHRA	Ms. Natasha Higgitt	In an email dated 17 March 2016, Ms. Higgitt thanked us for the notification on the SAHRA developments. She notified us that SAHRA does not accept hardcopies. emails or posted submissions. She requested that we create a case on the South Africa Heritage Resources Information System (SAHRIS) and upload all relevant documents to the case file.
Leads2Business	Melanie Miles	In an email dated 18 March 2016, Ms. Miles inquired whether Environamix was currently conducting an EIA for the Kagiso Solar Power Plant and asked whether we could

		forward her the BID for the application and register her as an I&AP.
SACAA	Ms. Lizell Stroh	In an email dated 18 March 2016, Ms. Stroh stated that there is a SACAA process whereby permission is applied for with regards to obstacles which could pose an aviation hazard. She further stated what is required for the application, such as a Google earth document reflecting the footprint of the proposed development and the assessment fee. She also stated that we should indicate the highest structure of the project & the overhead electric transmission line. She asked that we should consider unique names when naming the project due to other wind- and PV farms in the area. She also said to note that the lead time for approval may take up to 90 days upon receipt of the correct data.
SANRAL	Ms. Nicole Abrahams	In an email dated 27 May 2016, Ms. Abrahams stated that if services (overhead powerlines) needed to be constructed over or under a national road (in this case the N14) or within 60m measured from the reserve fence, the service owner must apply for a written permission from SANRAL, before any work may be carried out.  She attached an application form for the proposed encroachment.
AMDA Developments	Mr. Charlie Berrington	On 20 June 2016, in a telephone conversation with the EAP, Ms. Marélie Griesel, Mr. Berrington requested to be listed as an I&AP for all six proposed solar developments in the Northern Cape.
SAHRA	Ms. Natasha Higgitt	In an email dated 20 May 2016, Ms. Higgitt informed the EAP of the requirements for submission to SAHRA.
SAHRA	Ms. Natasha Higgitt	In an email dated 23 June 2016, Ms. Higgitt informed of the availability of comments on the proposed project.

### 5.3 THE ENVIRONMENTAL ATTRIBUTES ASSOCIATED WITH THE PREFERRED ALTERNATIVE

The following sections provide general information on the biophysical and socio-economic attributes associated with the preferred alternative.

### **5.3.1 Biophysical environment**

The biophysical environment is described with specific reference to geology, soils, agricultural potential, vegetation and landscape features, climate, biodiversity and the visual landscape. A number of specialists were consulted to assist with the compilation of this chapter of the report – refer to the table 1.2. The area proposed for development exclusively consists of land used for grazing but from an ecological and conservation point of view threatened and protected plant species, and Red Data bird species were identified on site.

#### **5.3.1.1 Geology, soils and agricultural potential**

According to Mucina and Rutherford (2006) the majority of the site is located in an area which is characterised by surface limestone of Tertiary to Recent age, dolomite and chert of the Campbell Group (Griqualand Wes Supergroup, Vaalian Erathem) and superficial Kalahari sediments with red wind-blown sand (0.3 – 1.2 m) of the Hutton soil form. Rocky pavements are present in places and associated with shallow soils. The majority site is dominated by the Kathu Bushveld. According to Mucina and Rutherford (2006) the southeastern corner of the site is characterised by aeolian red sand and surface calcrete with deep (.1.2m) sandy soils of the Clovelly and Hutton soil forms.

According to the Agriculture and Soils Impact Assessment (attached in Appendix H5) the proposed development is located on a terrain unit of level plains at an altitude of around 1,095 meters. Slope is less than 1% across the site. There are two land types across the site, namely Ah9 in the west and Ae1 in the east. Soils of both land types are very similar and are predominantly deep, well-drained, very sandy red and yellow soils of the Hutton and Clovelly soil forms, although some shallower soils on underlying rock and hardpan occur in land type Ae1.

Land capability is the combination of soil suitability and climate factors. The site and surrounds has a land capability classification, on the 8 category scale, of Class 7 – non-arable, low potential grazing land. The limitations to agriculture are predominantly climate related. The moisture availability class 5 classification, with high variability of rainfall is a very severe limitation to agriculture, which makes any cultivation without irrigation completely non-viable. The very sandy soils, with very limited water holding capacity are a further limitation. The grazing capacity on AGIS is classified as 18-21 hectares per large stock unit.

Because of predominantly the climate limitations, the site is totally unsuitable for cultivated crops, and viable agricultural land use is limited to grazing only. Agricultural conditions and potential are uniform across the site and the choice of placement of infrastructure therefore has no influence on the significance of agricultural impacts. No agriculturally sensitive areas occur within the investigated site and no parts of it therefore need to be avoided by the development. There are no required buffers.

The entire site comprises deep, largely unconsolidated sands. It is not known at what depth below surface any other material would be encountered. The foundations for mounting structures will need to be erected in sand. The geotechnical conditions are assessed, in terms of this investigation, as suitable for the development of a solar energy facility. Because soil

conditions are fairly uniform across the site, there are no more and less suitable parts of the project area for development.

No proposed grid connection alternatives will have any bearing on agricultural impacts. The no-go-alternative has zero impact on agriculture, compared to the low, negative impact for the development. But the no-go alternative also means that the two positive impacts of the project will not be realised.

Because the site is uniformly low potential, from an agricultural point of view, there is no preferred location or layout within the assessed site. There are no conditions resulting from this assessment that need to be included in the environmental authorisation.

#### Underlying geology and air quality

The Asbestos Mountains are a range of hills in the Northern Cape province of South Africa, stretching south, south-west from Kuruman, where the range is known as the Kuruman Hills, to Prieska. The range lies about 150 km west of Kimberley and rises from the Ghaap Plateau. The mountains were named for the asbestos which was mined in the 1900s and is found as a variety of amphibole called *crocidolite*. Veins occur in slaty rocks and are associated with jaspers and quartzites, rich in magnetite and brown iron-ore.

During the mining process, asbestos would regularly go airborne and spread to nearby towns. When people inhaled the dust, they experienced what is known as environmental exposure. One field study conducted from 1960 to 1962 in the Northern Cape cities of Prieska, Kuruman and Koegas (The Mesothelioma Centre, 2016) confirmed that people living in proximity to these mines and mills faced risks of contracting asbestosis, a noncancerous asbestos-related disease.

The authors also reported that “an alarmingly high number of cases with mesothelioma of the pleura had been discovered among people who have lived in the Northern Cape and that there is evidence that this condition is associated with exposure to asbestos dust inhalation which need not be industrial,” (The Mesothelioma Centre, 2016).

Seeing that the proposed site falls within the Ghaap Plateau and is located in relatively close proximity to the Asbestos Mountains, the risk of Asbestos exposure during the construction phase, when vegetation will be removed, soil will be disturbed and excavations will take place, could potentially exist. Special attention should be given to determining soil compositions before the commencement of the construction phase to determine if any asbestos deposits are present at the site. Dust pollution should also be avoided or minimised, to insure the safety of workers on site, and nearby communities at all times.

#### **5.3.1.2 Vegetation and landscape features**

The site falls within two landscape features and habitat characteristics. In terms of vegetation type the majority of the site falls within the Kathu Bushveld and the south eastern corner of the site falls with the Kuruman Thornveld vegetation types, both of which are described by Mucina and Rutherford (2006) as ‘least threatened’ – refer to the vegetation map.

Livestock ranching dominates the immediate surrounds and mining activities are a prominent feature in the region. Topography remains more or less homogeneous throughout the study site with no obvious change in slope. Neither permanent nor semi-permanent water bodies were identified from satellite images or after ground-truthing the sites. The site is structurally diverse with good ground cover for most parts. The site is utilised for grazing on occasion and signs of past veldfires (e.g. some trees only produce basal branches) are visible – refer to plates.

#### Red Data, Protected and Endemic Plant Species

According to the Ecological Fauna & Flora Habitat Survey (refer to Appendix H2) Eight plant species of specific conservation significance were recorded in the study area during the study period. One of these species is listed as a Threatened or Protected Species (ToPS) by the National Environmental Management: Biodiversity Act's (Act No. 10 of 2004) list of ToPS as published in Government Gazette no. 36375 of 16 April 2013 (NEMBA ToPS, 2013). Two are listed by Raimondo et al (2009) in the South African Red Data list as "Declining" species. Two trees are included in the protected tree species list as published in the National Forests Act (Act no.84 of 1998) (NFA, 1998), and five of the eight are listed as protected and one as specially protected by the Northern Cape Nature Conservation Act (Act no. 9 of 2009) (NCNCA, 2009).

Due to the high numbers of nationally protected trees (NFA, 1998) (i.e. *Acacia erioloba*, *A. haematoxylon* and *Boscia albitrunca*) the individual positions of these species were not individually geo-referenced during this study. Instead a number of belt transects were conducted in each different VU to determine the density at which these species occur in the study area and just beyond.



**Figure 13:** Examples of *Boscia albitrunca*, *Acacia haematoxylon* and *Acacia Erioloba*

14 belt transects of 100 x 40 m (4000 m<sup>2</sup>) were conducted in the area (7 in Vegetation Unit (VU) 1 and 7 in VU2) and only the numbers of the three nationally protected trees were considered. All specimens of these species within the belt transect were counted and noted together with the height of each specimen. Differentiation was made between specimens higher than 2 m (> 2 m) and those shorter than 2 m but not less than 1 m (< 2 m = 1 m). Specimens shorter than 1 m were not counted.

The total number of specimens of, for example, *Acacia haematoxylon* in VU1 is calculated at 13529. This number of specimens is the sum of the *A. haematoxylon* shrubs (1 to < 2 m) i.e.

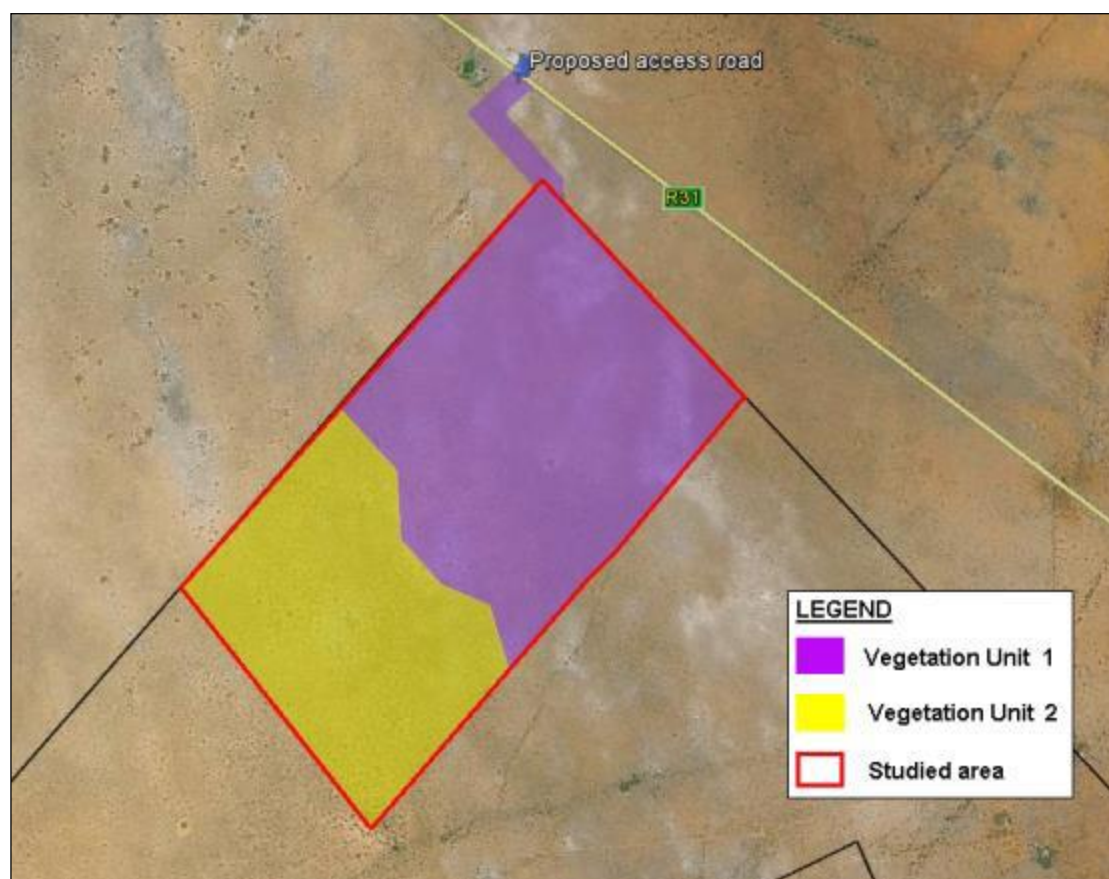


12549, and the trees (> 2 m) i.e. 980. The total calculated number of *A. haematoxylon* specimens to occur in the study area (300 ha preferred site) is 14357.

**Table 5.2:** Protected tree species frequency, density/ha & number of specimens per VU

VU	VU area (ha)	Average species frequency (as counted on 4000m <sup>2</sup> )					
		<i>Acacia erioloba</i>			<i>Acacia haematoxylon</i>		
		1 to <2m	>2m	Total	1 to <2m	>2m	Total
1		3.3	2.4	5.7	27.4	2.1	29.6
2		3.6	28.6	22.1	1.9	0.9	2.7
Average species density / ha							
1		8.21	6.07	14.29	68.57	5.36	73.93
2		8.93	46.43	55.36	4.64	2.14	6.79
Number of species per VU							
1	183	1503	1111	2614	12549	980	13529
2	122	1089	5664	6754	566	261	828
	Total:			9368			

It is strongly advised that once the exact position of development activities and infrastructure has been planned and finalized that a full population study of each affected area be done to determine the population size and extent of these and possibly other protected species within the study area and the relevant appropriate action is then taken.



**Figure 14:** The two vegetation units on the site

#### Exotic Plant Species

No exotic plant species were recorded in the study area during the time of this study.

#### **5.3.1.3 Climate**

According to Mucina and Rutherford (2006) rainfall peaks in summer and autumn with very dry winters. The mean annual precipitation (MAP) ranges from 220-380 mm with frequent to very frequent frost in winter. Mean maximum and minimum temperatures for the area in question are 35.9°C in December and -3.3°C in July, respectively.

Fthenakis and Yu (2014) published a paper on the *Analysis of the Potential for a Heat Island Effect in large Solar Farms*. The study focused on the effect on global climate due to the albedo change from widespread installations of solar panels and found that the air temperature at 2.5m of the ground in the centre of the simulated solar farm selection was 1.9°C higher than the ambient air temperature, but that it declined to the ambient temperature at the height of 5 to 18m of the ground. The data also showed a clear decline in air temperature (within 0.3°C) 300m away from the solar farm. The solar panels also cool completely at night, and it is thus unlikely that a heat island effect could occur. The simulations also showed that the access roads between the solar fields allow for substantial cooling, and therefore, it is unlikely that an increase of size of the solar farm will affect the temperature of the surroundings.

#### **5.3.1.4 Biodiversity**

The primary cause of loss of biological diversity is habitat degradation and loss (IUCN, 2004; Primack, 2006). In the case of this study special attention was given to the identification of sensitive species or animal life and birds on site. The following section will discuss the state of biodiversity on the site in more detail.

##### **5.3.1.4.1 Avifaunal**

According to the Avifaunal Study (refer to Appendix H3) the site proposed for the development is a relatively flat area dominated by Camel Thorn- and Blackthorn trees and Rhus bushes, with open areas interspersed with bush-encroached Rhigozum shrubs. Grass cover is highly variable depending on rain and grazing pressure.

Bird habitat in the region consists mainly of bush-thickened *Acacia mellifera*, but with some mature camelthorn. Taller trees and those growing near farm reservoirs are regularly used by passerine birds as nest sites, perch sites (for foraging) and for shade and roosting in the hottest times of day. Two studies in the Kalahari have indicated that taller trees add significantly to the avian species richness of an area (because of the diverse niches they offer) and their removal, therefore, can reduce avian species richness.

Artificial habitats are provided by land owners in the form of windmills, farm reservoirs and power line poles. Few pans occur in the immediate area and thus wetland birds are unlikely to occur around the site. Arid-adapted birds, including sandgrouse, doves, finches, weavers, sparrow-larks and raptors may well be attracted to farm reservoirs in the dry season.

A feature of potential concern is the possibility that polarized light from the PV panels, which at night gives the impression that there is a waterbody, may cause night-flying birds to descend and die from collision with the structures. A total of 78 bird species were recorded around the Kameel Aar farm from our records combined with bird atlas cards. Of these, 61 species were recorded on the 15 bird atlas cards submitted from 2007 to 2016. Of those, 2 species (White-backed and Lappet-faced Vulture) were collision-prone as ranked by the BARESG (2014), and both were red-listed. While we did not record the vultures, two additional collision-prone species were seen in our 2-day visit: A Greater Kestrel pair and Lanner Falcon. The latter is a Vulnerable red-listed species (Martin et al. 2015) and thus four collision-prone species potentially occur on the site, of which three are red-listed.

The Passage Rate of collision-prone birds through either site was 3 birds in 12 h or 0.25 birds hour<sup>-1</sup>. This is a low rate but may change with further observations as these birds may hunt around the artificial water sources in the dry season. Other aerial birds were recorded within the two sites but they are not classified as highly collision-prone. We recorded their presence on the assumption that they may be attracted to the panels as a source of water and could interact in an unknown manner with the perceived water as posited by the Lake Effect of Kagen et al. (2014).

These include Northern Black Korhaans *Afrotis afraoides* that undertake aerial display flights in the breeding season. In total three korhaan aerial display flights took place over the same area over the same period.

Importantly, no wetland species were recorded in 12 hours of observation, suggesting that future collisions by these species with the PV panels will be unlikely.

The avifauna of the area may be affected by the infrastructure of the Solar Power (PV) plant, but our analysis of the number of birds on site suggests the impact will be minimal based on one site visit in the wet season. It is important to realise that is a preliminary conclusion because it is based on a limited data set and one visit. Our second dry-season visit will help clarify the use of the site by collision-prone species.

We also recommend that all available precautions are taken to avoid the threatened raptors or wetland species being attracted to the panels. If birds are attracted and collide with the panels by mistaking it for open water, then we recommend that innovative bird deterrent techniques are used such as the Torri lines mentioned in the avian Scoping Report (Simmons and Martins 2016).

If these recommendations can be followed and prove effective, we believe that the Kagiso Solar Power Plant can be allowed to proceed with minimal impact to the avifauna of the area.

#### **5.3.1.4.2 Ecological**

The Ecological Fauna and Flora Habitat Survey (refer to Appendix H2) confirms that the site falls within the Eastern Kalahari Bushveld Bioregion of the Savanna Biome (Rutherford et al. 2006). Livestock ranching dominates the immediate surrounds and mining activities are a

prominent feature in the region. Topography remains more or less homogeneous throughout the study site with no obvious change in slope. Neither permanent nor semi-permanent water bodies were identified from satellite images or after ground-truthing the sites. The site is structurally diverse with good ground cover for most parts. The site is utilised for grazing on occasion and signs of past veldfires (e.g. some trees only produce basal branches) are visible.

Literature research revealed that no animals were restricted or endemic to the area. Some species listed have a low likelihood of occurring within the site, but are nonetheless listed if their habits, habitat requirements and estimated distribution ranges agree with the study findings. The likelihood of any amphibians occurring on the site is low due to the complete lack of local water bodies. No physical record of the listed butterfly occurring in the site exists, but has been included due to the close proximity of the nearest record (i.e. Hotazel) and its “Data deficient” status. Furthermore, this species is endemic to the region and has habitat preferences corresponding with habitat characteristics of the alternative site.

204 plant species are recorded on the POSA data base of SANBI for the relevant QDS 2723 AA and 2723 AC. A total of only 102 plant species (from 38 plant families and 77 genera) were recorded in the study area during the time of the study and indicates moderate species diversity.

The low faunal and moderately low floristic species richness and density recorded would equate to an insignificant impact to the regional diversity of plants, mammals, reptiles and amphibians. Although the number of protected faunal species possibly occurring on or in close proximity to the site is low, these deserve consideration.

When considering the area that was investigated during this study (the site and its direct surrounds), from a faunal, floral and general ecological point of view, it is concluded that the preferred site may be accepted for the proposed development.

#### **5.3.1.5 Visual landscape**

The visual impact of photovoltaic facility depends on the complex relationship between the visual environment (landscape), the development (object), and the observer/receptor (e.g. farmer). The establishment of a solar facility on the site is not expected to have a significant visual effect, given that the number of sensitive receptors is very low, electrical infrastructure such as power lines are already located in close proximity to the site and the technology considered for this development will be non-reflective. However, due to the extent of the proposed development (~250 hectares) a visual impact study is being conducted to determine to what extent the proposed development will be visible to observers and whether the landscape provides any significant visual absorption capacity.

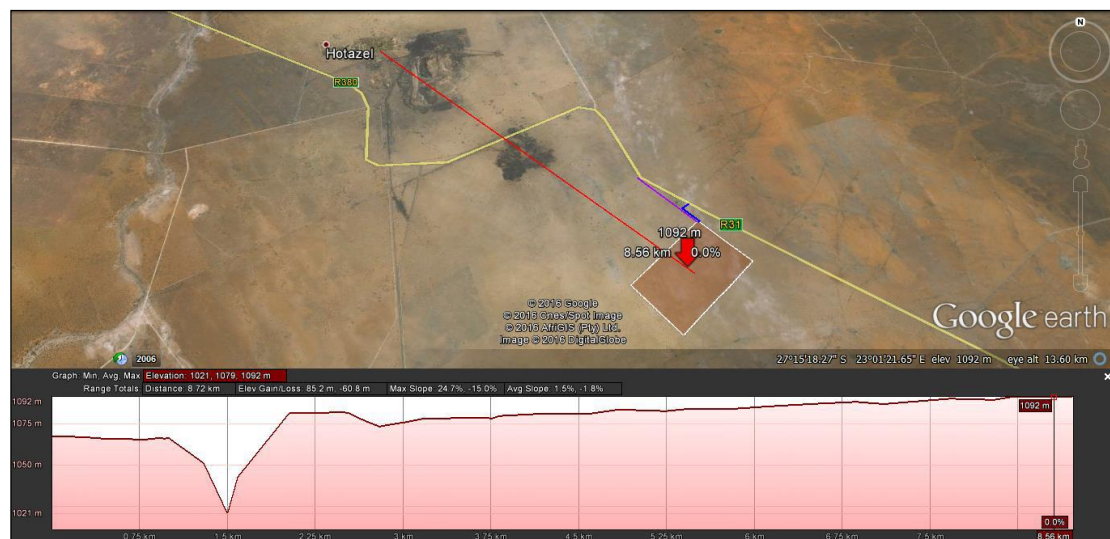
#### **Landform and drainage**

According to the Visual Impact Assessment (attached as Appendix H4) the proposed development is located in an area with relatively low significance in elevation, meaning that the site is not located on a mountain, at the foot of a mountain or in an area with a significant difference in elevation, except to the east where part of the Asbestos Mountains can be seen.

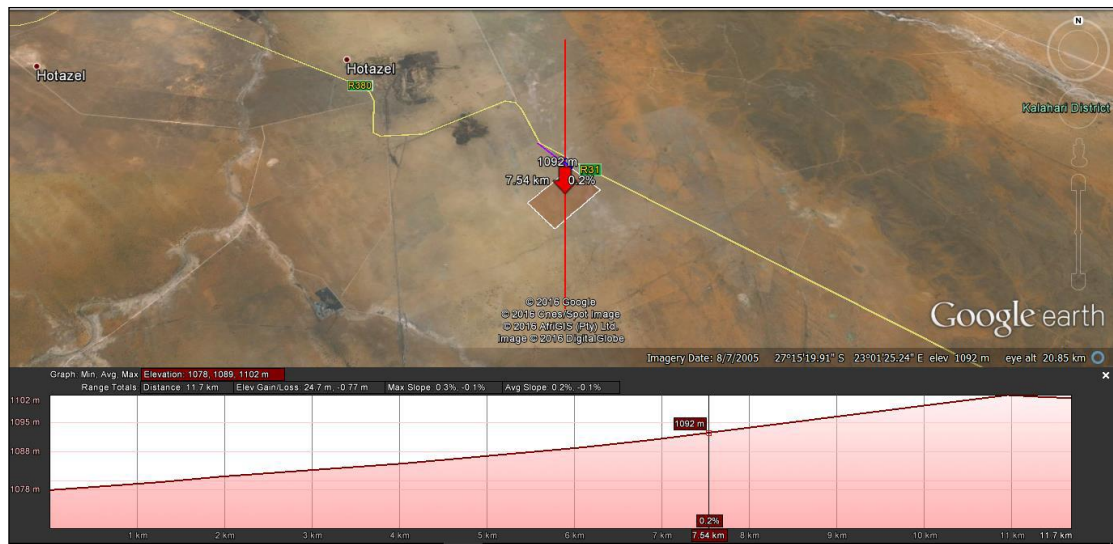
The site is located at an above mean sea level (amsl) of approximately 1097m at the highest elevation and at an amsl of 1089m at the lowest elevation. The town of Hotazel's lowest elevation is approximately 1071m amsl and 1061m amsl at the highest elevation, making the elevation lower than those of the preferred site and alternative. Approximately 4km north east from the proposed development lays the informal settlement of Magobing and 6,6km to the north east the informal settlement of Mogojaneng. Refer to figures 15-17 for cross section profiles.

The proposed development and is not located in close proximity to any major rivers or dams. A non-perennial river, the Kuruman River, is located approximately 13km to the north east on the opposite side of the Asbestos Mountains. The area drains to the north west, towards the town of Hotazel.

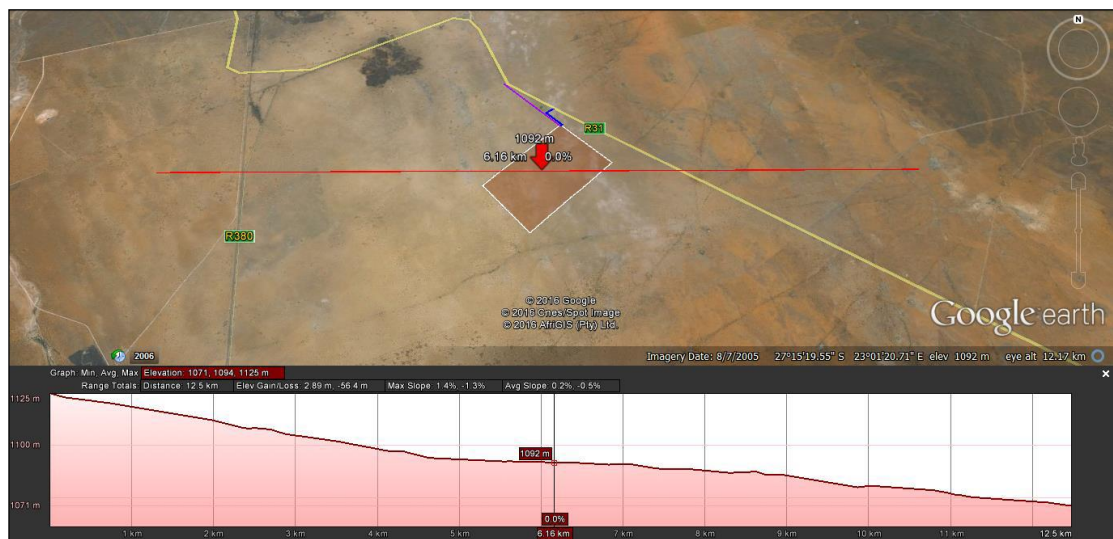
The landform described above is unlikely to limit visibility. Areas within 5km from the proposed development might have a clear view without taking existing screening into account.



**Figure 15:** Cross section profile taken from Hotazel to proposed development



**Figure 16:** Cross section profile taken from north to south



**Figure 17:** Cross section profile taken from east to west

In terms of possible landscape degradation, the landscape does appear to have existing screening up to a certain level. Where line connections are concerned, the preferred line connection will have a small negative visual impact on viewers. The line is short in distance as to a connection point at the nearby Eskom substation approximately 6,3km north east from site, which will have a greater negative visual impact

#### 5.3.1.6 Traffic consideration

Access to the facility will be obtained from the R31 Provincial Road. And a new entrance road to the site is required. Internal site road networks to provide access to the Solar Power Plant and its associated infrastructure will be required. All roads on site require a width of approximately 5-6m to accommodate heavy vehicles. The R31 is currently underutilised and can accommodate greater volumes of traffic as the majority of the traffic is mine vehicles or residents of Hotazel and surrounding farms.



None of the new services that will be installed will be crossing any National Road Reserves. However, as the main access to the proposed facility is on a Regional Route, a wayleave application to the South African National Roads Agency SOC Ltd. (SANRAL SOC Ltd) will be needed. The access itself will also need to be formalised to a standard specified by the agency. The low levels of impact significance can be mitigated and does not result in the irreplaceable loss of resources.

The photovoltaic equipment and all its components will be transported to the Kameel Aar farm over a distance of 1028km or 1116km from either Durban or Cape Town harbours. The vehicles used to transport the photo voltaic equipment are standard container trucks and not oversize vehicles. As this route is travelled by the same type of vehicle throughout, no obstacles (e.g. Low overhead services, cattle grids, narrow bridges etc.) are expected.

The following traffic load figures are expected during the construction period:

**Table 5.3:** Trip Summary for Long Distance Route

<b>Route Description</b>	<b>Delivery trips (None peak)</b>	<b>Construction Vehicle Trips (None peak)</b>	<b>Cumulative trips for two SPPs</b>
Durban to Hotazel via R34 & R31	9 vpd	5 vpd	28 vpd
Cape Town to Hotazel via R27 / N14 via N3	9 vpd	5 vpd	28 vpd

It is envisaged that the estimated additional traffic generated by the construction staff travelling to and from site, can be accommodated on the existing roadways. Adequate traffic accommodation signage must be erected and maintained on either side of the access on the R31 Provincial Road National Route 14 throughout the construction period.

### **5.3.2 Description of the socio-economic environment**

The socio-economic environment is described with specific reference to social, economic, heritage and cultural aspects.

#### **5.3.2.1 Socio-economic conditions**

The development of the Kagiso Solar Power Plant (SPP) has a variety of associated socio-economic benefits. In terms of employment the construction phase will employ approximately 60 new skilled, 220 low-skilled and 120 semi-skilled employment opportunities over a period of 18 – 24 months. The operational phase however, will employ approximately 3 new skilled, 40 low-skilled and 10 semi-skilled employment opportunities over a period of 20 years.

It is reported by the John Taolo Gaetsewe District Municipality IDP of 2012 – 2016 that in 2007 the mining sector in the district was the most significant contributor to the district's GDP (49.6%). Other contributors included the government services sector (12.6%), the trade sector

(9.1%) and the finance and business services (7.7%). Through these figures it is evident that this district heavily relies on the mining sector.

The Joe Morolong Local Municipality is located in the John Gaetsewe District Municipality of the Northern Cape Province. The 2011 Census reports that this municipal area has a population of 89 377 people, comprising 20 707 households. The 2011 Census indicated that 7828 of the population were employed, 4912 unemployed, 6200 discouraged work-seekers. More than 29 000 are economically inactive. A similarity in the weak figures goes for regarding the level of education in this municipal area. Only 2324 of the population completed primary school, 5986 matric and only 1823 went through to higher education.

According to the Joe Morolong IDP of 2015/2016 this municipal area can be regarded as the poorest area in the district. The agricultural sector, mining and community services are the key economic drivers for this municipal area. The mining sector according to the IDP created 471 employment opportunities, whereas agriculture created 720 and community services 1683 employment opportunities.

### **5.3.2.2 Cultural and heritage aspects**

Special attention was given to the identification of possible cultural or heritage resources on site. The initial site investigation concluded that there are no obvious heritage resources located on the site earmarked for development. However, a Heritage Impact Assessment (HIA) has been conducted to ensure that there would be no impact on cultural or historical features as a result of the proposed activity.

According to the Heritage Impact Assessment (attached as Appendix H6) the cultural landscape qualities of the region essentially consist of a two components. The first is a rural area in which the human occupation is made up of a pre-colonial (Stone Age) occupation and a much later colonial (farmer) component. The second component is an urban one consisting of a number of smaller towns, most of which developed during the last 150 years or less.

#### Early history

Surveys in the area have revealed that the archaeological record is temporarily confined to the Middle and Later Stone Age and is spatially concentrated around the riverine edges. More to the south in the region of Kathu, occupation of the region already took place during the Early Stone Age and less obviously present are the Later Stone Age sites some of which occur in the larger region, with Cape Coastal pottery associated with amorphous LSA (herders) or Wilton (hunter-gatherers) in the period 100 BC to AD 1900.

A very low occurrence of Middle Stone Age tools (1 artefact/100m<sup>2</sup>) were identified in a rocky outcrop situated east of the study area. As this locality is outside of the study area, there would be no impact on it as a result of the proposed development.

Early Iron Age occupation did not take place in the region and seems as if the earliest people to have settled here were those of Tswana-speaking origin (Tlhaping and Tlharo) that settled



mostly to the north and a bit to the west of Kuruman. No sites, features or objects dating to the Iron Age were identified in the study area.

Many early explorers, hunters, traders and missionaries travelled through the area on their way to Kuruman on what was to become known as the “missionary road”.

#### Historic period

Although prospecting for minerals, especially diamonds occurred in the area and some knowledge was available on the iron deposits, it was only during the 1940s that the extent of the iron and manganese deposits were established, this was followed by the establishment of towns such as Sishen (1952) and Kathu in 1972. As already indicated, the larger region as well as the study area has been sparsely populated and has largely been used for cattle farming. No sites, features or objects dating to the historic period were identified in the study area.

#### Palaeontology

According to the Paleaontological Impact Assessment, (refer to Appendix H7) the assessment indicates that the proposed development footprint, is underlain by well-developed Kalahari Group surface limestones (TI), and wind-blown sands of low palaeontological sensitivity. The paleontologically and archaeologically significant karst features (dolines) within the Kalahari Group sequence are generally highly visible and easy to avoid. Potential impact on palaeontological heritage resources within the footprint areas at Kameel Aar 315, as well as along the associated transmission line areas, is on the whole considered to be low to very low. As far as the palaeontological heritage is concerned, the proposed Kagiso SPP and associated transmission line development may proceed with no further palaeontological assessments required.

From a heritage point of view, the following condition will apply:

- To address any subsurface cultural or heritage resources it needs to be clearly stated in the construction environmental management plan, submitted with the EIA report, that SAHRA will be informed immediately should any artefacts be exposed during construction. Training of contractors on heritage issues will also form part of the contractor’s brief.

#### **5.4 SITE SELECTION MATRIX**

Due to the nature of the proposed development, the location of the facility is largely dependent on technical and environmental factors such as solar irradiation, climatic conditions, topography of the site, access to the grid and capacity of the grid. Studies of solar irradiation worldwide indicate that the Northern Cape has a huge potential for the generation of power from solar.

The receptiveness of the site to PV Development includes the presence of optimal conditions for the siting of a solar energy facility due to high irradiation values and optimum grid connection opportunities. The Remaining Extent of the Farm Kameel Aar No. 315 where the project is proposed to be located is considered favorable and suitable from a technical perspective due to the following characteristics:

- Climatic conditions: Climatic conditions determine if the project will be viable from an economic perspective as the solar energy facility is directly dependent on the annual direct solar irradiation values of a particular area. The Northern Cape receives the highest average of direct normal and global horizontal irradiation in the country, daily. This is an indication that the regional location of the project includes a low number of rainy days and a high number of daylight hours experienced in the region. Global Horizontal Radiation of  $\sim 2240 \text{ kWh/m}^2/\text{year}$  is relevant in the area.
- Topographic conditions: The surface are on which the proposed facility will be located has a favorable level topography, which facilitates work involved with construction and maintenance of the facility and ensures that shadowing on the panels do not occur.
- Extent of the site: A significant portion of land is required to evacuate the prescribed 115MW and space is a constraining factor in PV facility installations. Provision was made to assess a larger area than is required for the facility to make provision for any other environmental or technical constraints that may arise and avoiding those areas. Larger farms are sought after to make provision for any constraints imposed by the Department of Agriculture on the extent of land that may be used for such facilities per farm. The Remaining Extent of the farm Kameel Aar No. 315 is 1417.73 hectares in extent.
- Site availability and access: The land is available for lease by the developer. Reluctant farm owners or farmers over capitalizing hamper efforts to find suitable farms. Access will be easily obtained from the R31 Regional Road.
- Grid connection: In order for the PV facility to connect to the national grid the facility will have to construct an on-site substation, Eskom switching station and a power line from the project site to connect to the Eskom grid. Available grid connections are becoming scarce and play a huge role when selecting a viable site.
- Environmental sensitivities: From an environmental perspective the proposed site is considered highly desirable due to limited environmental sensitivities in terms of geology, and soils, agricultural potential, vegetation and landscape features, climate, biodiversity and the visual landscape – refer to Section 5.3.1 of this report. Due to the fact that the area proposed for development exclusively consists of land used for grazing, from an ecological or conservation point of view protected plant species and red data bird species are present at the site

It is evident from the discussion above that the Remaining Extent of the Kameel Aar No. 315 may be considered favourable and suitable in terms of these site characteristics. The challenges were therefore to identify the preferred location for the proposed development within the boundaries of the farm.

## **5.5 CONCLUDING STATEMENT ON ALTERNATIVES**

In conclusion the preferred alternative entails the following:

- The development of the 115MW Kagiso Photovoltaic Solar Energy facility on the Remaining Extent of the farm Kameel Aar 315, Registration Kuruman, Northern Cape Province - refer to Section 2 of this report.

The preferred layout on the Remaining Extent of the farm Kameel Aar 315 will be included in the Environmental Impact Report. It may be concluded that no other alternatives will be considered during the next phase of the EIA process.

## 6 DESCRIPTION OF THE IMPACTS AND RISKS

---

This section aims to address the following requirements of the regulations:

**Appendix 2.** (2) A scoping report (...) must include-

(v) the impacts and risks identified for each alternative, including the nature, significance, consequence, extent, duration and probability of the impacts, including the degree to which these impacts-

(aa) can be reversed;

(bb) may cause irreplaceable loss of resources; and

(cc) can be avoided, managed or mitigated;

(vi) the methodology used in determining and ranking the nature, significance, consequences, extent, duration and probability of potential environmental impacts and risks associated with the alternatives;

(vii) positive and negative impacts that the proposed activity and alternatives will have on the environment and on the community that may be affected focusing on the geographical, physical, biological, social, economic, heritage and cultural aspects;

(viii) the possible mitigation measures that could be applied and level of residual risk;

### 6.1 SCOPING METHODOLOGY

The contents and methodology of the scoping report aims to provide, as far as possible, a user-friendly analysis of information to allow for easy interpretation.

- Checklist (see section 6.1.1): The checklist consists of a list of structured questions related to the environmental parameters and specific human actions. They assist in ordering thinking, data collection, presentation and alert against the omission of possible impacts.
- Matrix (see section 6.1.2): The matrix analysis provides a holistic indication of the relationship and interaction between the various activities, development phases and the impact thereof on the environment. The method aims at providing a first order cause and effect relationship between the environment and the proposed activity. The matrix is designed to indicate the relationship between the different stressors and receptors which leads to specific impacts. The matrix also indicates the specialist studies that have been conducted to address the potentially most significant impacts.

#### 6.1.1 Checklist analysis

The independent consultant conducted a site visit on 28 February 2016. The site visit was conducted to ensure a proper analysis of the site specific characteristics of the study area.

Table 6.1 provides a checklist, which is designed to stimulate thought regarding possible consequences of specific actions and so assist scoping of key issues. It consists of a list of structured questions related to the environmental parameters and specific human actions. They assist in ordering thinking, data collection, presentation and alert against the omission of possible impacts. The table highlights certain issues, which are further analysed in matrix format in section 6.2.

**Table 6.1:** Environmental checklist

QUESTION	YES	NO	Un-sure	Description
<b>1. Are any of the following located on the site earmarked for the development?</b>				
I. A river, stream, dam or wetland		×		None.
II. A conservation or open space area				None.
III. An area that is of cultural importance		×		None.
IV. Site of geological significance		×		None.
V. Areas of outstanding natural beauty		×		None.
VI. Highly productive agricultural land		×		None.
VII. Floodplain		×		None.
VIII. Indigenous forest		×		None.
IX. Grass land		×		None.
X. Bird nesting sites		×		The Avifaunal Study (refer to Appendix H3) states that taller Acacia trees and those growing near farm reservoirs are regularly used by passerine birds as nest sites (e.g. Sociable Weavers nest in them), and for perch sites for shade and roosting in the hottest times of day.
XI. Red data species	×			The Avifaunal Study (refer to Appendix 3) identified 3 species White-backed Vulture <i>Gyps africanus</i> , Lappet-faced Vulture <i>Torgos tracheliotus</i> and the Lanner Falcon <i>Falco biarmicus</i> .
XII. Tourist resort		×		None.
<b>2. Will the project potentially result in potential?</b>				
I. Removal of people		×		None.

II. Visual Impacts	×			The VIA (refer to Annexure H5) confirmed that the visual impact of a low-lying PV facility is not expected to be significant as the number of sensitive receptors in the area is very low.
III. Noise pollution		×		Construction activities will result in the generation of noise over a period of months. The noise impact is unlikely to be significant.
IV. Construction of an access road		×		Access will be obtained via the R31 Regional Road.
V. Risk to human or valuable ecosystems due to explosion/fire/ discharge of waste into water or air.		×		None.
VI. Accumulation of large workforce (>50 manual workers) into the site.	×			Approximately 400 employment opportunities will be created during the construction phase of the project.
VII. Utilisation of significant volumes of local raw materials such as water, wood etc.	×			The estimated maximum amount of water required during the facility's 20 years of production is approximately 3 880m <sup>3</sup> per annum.
VIII. Job creation	×			Approximately 453 employment opportunities will be created during the construction and operational phases.
IX. Traffic generation	×			It is estimated that 64 trips per day will be generated over the 12 Month construction period.
X. Soil erosion	×			The site will need to be cleared or graded to a limited extent, which may potentially result in a degree of dust being created, increased runoff and potentially soil erosion. The time that these areas are left bare will be limited to the construction phase, since vegetation will be allowed to grow back after construction.
XI. Installation of additional bulk telecommunication transmission lines or facilities		×		None.
<b>3. Is the proposed project located near the following?</b>				
I. A river, stream, dam or wetland		×		None.
II. A conservation or open space area		×		None.

III. An area that is of cultural importance		×		None.
IV. A site of geological significance		×		None.
V. An area of outstanding natural beauty		×		None.
VI. Highly productive agricultural land		×		None.
VII. A tourist resort		×		None.
VIII. A formal or informal settlement		×		None.

### 6.1.2 Matrix analysis

The matrix describes the relevant listed activities, the aspects of the development that will apply to the specific listed activity, a description of the environmental issues and potential impacts, the significance and magnitude of the potential impacts and possible mitigation measures. The matrix also highlights areas of particular concern (see table 6.2) for more in depth assessment during the EIA process. An indication is provided of the specialist studies which is being conducted and that informed the initial assessment. Each cell is evaluated individually in terms of the nature of the impact, duration and its significance – should no mitigation measures be applied. This is important since many impacts would not be considered insignificant if proper mitigation measures were implemented.

In order to conceptualise the different impacts, the matrix specify the following:

- **Stressor:** Indicates the aspect of the proposed activity, which initiates and cause impacts on elements of the environment.
- **Receptor:** Highlights the recipient and most important components of the environment affected by the stressor.
- **Impacts:** Indicates the net result of the cause-effect between the stressor and receptor.
- **Mitigation:** Impacts need to be mitigated to minimise the effect on the environment.

Please refer to **Annexure G** for a more in-depth assessment of the potential environmental impacts.

**Table 6.2:** Matrix analysis

For ease of reference the significance of the impacts is colour-coded as follow:

Low significance		Medium significance		High significance		Positive impact	
------------------	--	---------------------	--	-------------------	--	-----------------	--

LISTED ACTIVITY (The Stressor)	ASPECTS OF THE DEVELOPMENT /ACTIVITY	POTENTIAL IMPACTS		SIGNIFICANCE AND MAGNITUDE OF POTENTIAL IMPACTS							MITIGATION OF POTENTIAL IMPACTS			SPECIALIST STUDIES / INFORMATION	
		Receptors	Impact description / consequence	Minor	Major	Extent	Duration	Probability	Reversibility	Irreplaceable loss of resources	Possible Mitigation	Possible mitigation measures	Level of residual risk		
CONSTRUCTION PHASE															
<p><u>Activity 11(i) (Regulation 983):</u> “The development of facilities or infrastructure for the transmission and distribution of electricity- (i) outside urban areas or industrial complexes with a capacity of more than 33 but less than 275 kilovolts.”</p> <p><u>Activity 28(ii) (Regulation 983):</u> “Residential, mixed, retail, commercial, industrial or institutional developments where such land was used for agriculture or afforestation on or after 1998 and where such development (ii) will occur outside an urban area, where the total land to be developed is bigger than 1 hectare.”</p> <p><u>Activity 1 (Regulation 984):</u> “The development of facilities or infrastructure for the generation of electricity where the electricity output is 20 megawatts or more.”</p>	<p><u>Site clearing and preparation</u> Certain areas of the site will need to be cleared of vegetation and some areas may need to be levelled.</p> <p><u>Civil works</u> The main civil works are:</p> <ul style="list-style-type: none"><li>• Terrain levelling if necessary– Levelling will be minimal as the potential site chosen is relatively flat.</li><li>• Laying foundation- The structures will be connected to the ground through cement pillars, cement slabs or metal screws. The exact method will depend on the detailed geotechnical analysis.</li><li>• Construction of access and inside roads/paths – existing paths will be used where reasonably possible. Additionally, the turning</li></ul>	BIOPHYSICAL ENVIRONMENT	Fauna & Flora	<ul style="list-style-type: none"><li>• Loss or fragmentation of habitat for faunal and floral species</li><li>• Loss of indigenous faunal and floral species diversity.</li><li>• Loss of faunal and floral species of conservation significance</li></ul>			L	L	D	RR	ML	Yes	<p>- Site clearing must take place in a phased manner, as and when required.</p> <p>- The footprint associated with the construction related activities (access roads, construction platforms, workshop etc.) should be confined to the fenced off area and minimised where possible.</p> <p>- No trapping or snaring to fauna on the construction site should be allowed.</p> <p>- Also refer to the mitigation measures listed in the Ecological Fauna and Flora Habitat Survey &amp; Avifaunal Study.</p>	L	Ecological Fauna and Flora Habitat Survey & Avifaunal Study
			Avifauna	<ul style="list-style-type: none"><li>• Collision with PV itself from birds perceiving the panels as open water</li><li>• disturbance by construction and maintenance activities</li></ul>			L	L	Pr	PR	ML	Yes	<p>- Bird scaring techniques including rotating prisms and experimental use of Torri lines are used if birds are found to impact the PV panels;</p>	L	Avifaunal Study



<p>Activity 15 (Regulation 984): “The clearance of an area of 20 hectare or more of indigenous vegetation...”</p>	<p>circle for trucks will also be taken into consideration.</p> <ul style="list-style-type: none"><li>Trenching – all Direct Current (DC) and Alternating Current (AC) wiring within the PV plant will be buried underground. Trenches will have a river sand base, space for pipes, backfill of sifted soil and soft sand and concrete layer where vehicles will pass.</li></ul>			<ul style="list-style-type: none"><li>displacement through habitat removal and construction work</li><li>direct collision with the power line network.</li></ul>								<p>--The solar panels are constructed as far as possible from water points that could attract any wetland species;</p> <p>- All power lines – <i>present and future</i> – must be marked with bird diverters to reduce the possible impact risk for the bustards and raptorial species.</p>		
	<p><u>Transportation and installation of PV panels into an Array</u></p> <p>The panels are assembled at the supplier’s premises and will be transported from the factory to the site on trucks. The panels will be mounted on metal structures which are fixed into the ground either through a concrete foundation or a deep seated screw.</p>	Air	<ul style="list-style-type: none"><li>Air pollution due to the increase of traffic of construction vehicles.</li></ul>	-		S	S	D	CR	NL	Yes	<p>- Dust suppression measures must be implemented for heavy vehicles such as wetting of gravel roads on a regular basis and ensuring that vehicles used to transport sand and building materials are fitted with tarpaulins or covers.</p>	L	-
	<p><u>Wiring to the Central Inverters</u></p> <p>Sections of the PV array would be wired to central inverters which have a maximum rated power of 2000kW each. The inverter is a pulse width mode inverter that converts DC electricity to alternating electricity (AC) at grid frequency.</p>	Soil	<ul style="list-style-type: none"><li>Loss of topsoil in disturbed areas, causing a decline in soil fertility.</li><li>Soil Erosion caused by alteration of the surface characteristics.</li></ul>			S	M	Po	PR	ML	Yes	<p>- Areas which are not to be constructed on within two months must not be cleared to reduce erosion risks.</p> <p>- The necessary silt fences and erosion control measures must be implemented in areas where these risks are more prevalent.</p> <p>- Vehicles and equipment shall be serviced regularly to avoid the contamination of soil from oil and hydraulic fluid leaks etc.</p> <p>- Also refer to the mitigation measures listed in the Agricultural and Soils Impact Assessment (attached as Appendix H5).</p>	M	Agricultural and Soils Impact Assessment



													drilled (e.g. screen and casing lengths, diameters, total depth, etc). Sampling of monitoring boreholes should be done according to recognised standards.		
			Surface water	<ul style="list-style-type: none"> <li>• Increase in storm water run-off.</li> <li>• Pollution of water sources due to soil erosion.</li> <li>• Destruction of watercourses</li> </ul>		-	L	S	Pr	PR	ML	Yes	<ul style="list-style-type: none"> <li>- Silt fences should be used to prevent any soil entering the stormwater drains</li> <li>- New stormwater construction must be developed strictly according to specifications from engineers in order to ensure efficiency.</li> <li>- Any hazardous substances must be stored at least 200m from any of the water bodies on site.</li> </ul>	M	-
		SOCIAL/ECONOMIC ENVIRONMENT	Local unemployment rate	<ul style="list-style-type: none"> <li>• The creation of local employment and business opportunities, skills development and training;</li> <li>• Technical support to local farmers and municipalities;</li> </ul>		+	P	S	D	I	N/A	Yes	- Where reasonable and practical, Kagiso's service providers should appoint local contractors and implement a 'locals first' policy, especially for semi and low-skilled job categories.	L	Social Impact Assessment
			Visual landscape	<ul style="list-style-type: none"> <li>• Potential visual impact on residents of farmsteads and motorists in close proximity to proposed facility.</li> </ul>		-	L	S	D	CR	NL	Yes	<ul style="list-style-type: none"> <li>Dust suppression will play an important role to minimise the visibility of dust.</li> <li>- Contractors must avoid using roads not relevant to the project.</li> </ul>	L	-

													<ul style="list-style-type: none"> <li>- Good housekeeping should be implemented.</li> <li>- Proper rehabilitation of disturbed areas</li> </ul>		
			Traffic volumes	<ul style="list-style-type: none"> <li>• Increase in construction vehicles.</li> </ul>	-		P	S	Pr	CR	NL	Yes	The development may commence without influencing the levels-of-service for the local road network.	L	Traffic Impacts Assessed by EAP
			Health & Safety	<ul style="list-style-type: none"> <li>• Air/dust pollution.</li> <li>• Road safety.</li> <li>• Impacts associated with the presence of construction workers on site and in the area.</li> <li>• Influx of job seekers to the area.</li> <li>• Increased safety risk to farmers, risk of stock theft and damage to farm infrastructure associated with presence of construction workers on the site.</li> <li>• Increased risk of veld fires.</li> </ul>		-	L	S	Pr	PR	ML	Yes	<ul style="list-style-type: none"> <li>- Contractor to ensure that construction related activities that pose a potential fire risk, such as welding, are properly managed and are confined to areas where the risk of fires has been reduced.</li> <li>- It is recommended that no construction workers, with the exception of security personnel, should be permitted to stay overnight on the site</li> <li>- Also refer to the mitigation measures listed in the Social Impact Assessment (attached as Appendix H8).</li> </ul>	M	Social Impact Assessment
			Noise levels	<ul style="list-style-type: none"> <li>• The generation of noise as a result of construction vehicles, the use of machinery such as drills and people working on the site.</li> </ul>	-		L	S	D	CR	NL	Yes	- During construction care should be taken to ensure that noise from construction vehicles and plant equipment does not intrude on the surrounding residential areas. Plant equipment such as generators, compressors, concrete mixers as well as vehicles	L	-

													should be kept in good operating order and where appropriate have effective exhaust mufflers.		
			Tourism industry	<ul style="list-style-type: none"> <li>Since there are no tourism facilities in close proximity to the site, the proposed activities will not have an impact on tourism in the area.</li> </ul>	N/A	N/A	N/A	N/A	N/A	N/A	N/A	N/A	N/A	N/A	N/A
			Heritage resources	<ul style="list-style-type: none"> <li>Removal or destruction of archaeological and/or paleontological sites.</li> <li>Removal or destruction of buildings, structures, places and equipment of cultural significance.</li> <li>Removal or destruction of graves, cemeteries and burial grounds.</li> </ul>		-	S	S	Po	I	ML	Yes	- Any discovered artifacts shall not be removed under any circumstances. Any destruction of a site can only be allowed once a permit is obtained and the site has been mapped and noted. Permits shall be obtained from the SAHRA should the proposed site affect any world heritage sites or if any heritage sites are to be destroyed or altered.	L	Heritage Impact Assessment & Palaeontological Heritage Assessment
OPERATIONAL PHASE															
	<p>The key components of the proposed project are described below:</p> <ul style="list-style-type: none"> <li><u>PV Panel Array</u> - To produce 115MW, the proposed facility will require numerous linked cells placed behind a protective glass sheet to form a panel. Multiple panels will be required to form the solar PV arrays which will comprise the PV facility. The PV panels will</li> </ul>	BIOPHYSICAL ENVIRONMENT	Fauna & Flora	<ul style="list-style-type: none"> <li>Loss or fragmentation of habitat for faunal and floral species.</li> <li>Loss of indigenous faunal and floral species diversity.</li> <li>Loss of faunal and floral species of conservation significance.</li> <li>Loss or fragmentation of habitats.</li> <li>Degradation and/or destruction of natural pans.</li> </ul>		-	S	L	D	PR	ML	Yes	<ul style="list-style-type: none"> <li>Indigenous vegetation must be maintained and all exotics removed as they appear and disposed of appropriately.</li> <li>Re-vegetation of the disturbed site is aimed at approximating as near as possible the natural vegetative conditions prevailing prior to construction.</li> <li>Implement an Avifauna Monitoring plan.</li> </ul>	M	Ecological Fauna and Flora Habitat Survey & Avifaunal Study

	<p>be tilted at a northern angle in order to capture the most sun.</p> <ul style="list-style-type: none"><li>• <u>Wiring to Central Inverters</u> - Sections of the PV array will be wired to central inverters. The inverter is a pulse width mode inverter that converts direct current (DC) electricity to alternating current (AC) electricity at grid frequency.</li><li>• <u>Connection to the grid</u> - Connecting the array to the electrical grid requires transformation of the voltage from 480V to 33kV to 132kV. The normal components and dimensions of a distribution rated electrical substation will be required. Output voltage from the inverter is 480V and this is fed into step up transformers to 132kV. An onsite substation will be required on the site to step the voltage up to 132kV, after which the power will be evacuated into the national grid. Whilst Kagiso Solar Power Plant has not yet received a cost estimate letter from Eskom, it is expected that generation from the facility will tie in with the new</li></ul>											- Also refer to the mitigation measures listed in the Ecological Fauna and Flora Habitat Survey & Avifaunal Study.			
		Air quality	<ul style="list-style-type: none"><li>• The proposed development will not result in any air pollution during the operational phase.</li></ul>	N/A	N/A	N/A	N/A	N/A	N/A	N/A	N/A	N/A	N/A	N/A	N/A
		Soil	<ul style="list-style-type: none"><li>• Loss of agricultural land use caused by direct occupation of land by the energy facility footprint.</li><li>• Loss of topsoil in disturbed areas, causing a decline in soil fertility.</li><li>• Soil Erosion caused by alteration of the surface characteristics.</li></ul>									Yes	<p>- An effective system of run-off control should be implemented, where it is required, that collects and safely disseminates run-off water from all hardened surfaces and prevents potential down slope erosion.</p> <p>- Another important measure is to avoid stripping land surfaces of existing vegetation by only allowing vehicles to travel on existing roads and not create new roads.</p> <p>- Also refer to the mitigation measures listed in the Agricultural and Soils Impact Assessment (attached as Appendix H5).</p>	M	Agricultural and Soils Impact Assessment
		Geology	<ul style="list-style-type: none"><li>• Collapsible soil.</li><li>• Seepage (shallow water table).</li><li>• Active soil (high soil heave).</li><li>• Erodible soil.</li><li>• Hard/compact geology. If the bedrock occurs close to surface it may present problems when driving solar panel columns.</li><li>• Instability due to soluble rock.</li></ul>									Yes	<p>- Surface drainage should be provided to prevent water ponding.</p> <p>- Mitigation measures proposed by the detailed engineering geological investigation should be implemented.</p>	L	Geotechnical Study included as part of soil study



		SOCIAL/ECONOMIC ENVIRONMENT	Local unemployment rate	<ul style="list-style-type: none"> <li>Job creation. Security guards will be required for 24 hours every day of the week and general laborers will also be required for the cleaning of the panels.</li> <li>Skills development.</li> </ul>		+	L	L	D	I	N/A	Yes	- Where reasonable and practical, Kagiso's service providers should implement a 'locals first' policy, especially for semi and low-skilled job categories	N/A	Social Impact Assessment
			Visual landscape	<ul style="list-style-type: none"> <li>Change in land-use/sense of place. The site is characterized by open veldt with a rural agricultural sense of place. The use of the area for the construction and operation of the PV plant will result in the area not being used for livestock grazing anymore.</li> <li>Potential visual impact on residents of farmsteads and travellers in close proximity to proposed facility.</li> </ul>		-	L	L	D	PR	ML	Yes	<ul style="list-style-type: none"> <li>Screening should be implemented by means of vegetation in conjunction with security fencing.</li> <li>Security lighting should make use of down-lights to minimise light spill, and motion detectors where possible so that lighting at night is minimised.</li> <li>Care should be taken with the layout of the security lights to prevent motorists on the dirt road from being blinded by lights at the approach to the site.</li> </ul>	M	Visual Impact Assessment
			Traffic volumes	<ul style="list-style-type: none"> <li>The proposed development will not result in any traffic impacts during the operational phase.</li> </ul>	-		L	L	Po	CR	NL	Yes	-	L	EAP to assess traffic impacts
			Health & Safety	<ul style="list-style-type: none"> <li>The proposed development will not result in any health and safety impacts during the operational phase.</li> </ul>	N/A	N/A	N/A	N/A	N/A	N/A	N/A	N/A	N/A	N/A	N/A
			Noise levels	<ul style="list-style-type: none"> <li>The proposed development will not result in any noise pollution during the operational phase.</li> </ul>	N/A	N/A	N/A	N/A	N/A	N/A	N/A	N/A	N/A	N/A	N/A
			Tourism industry	<ul style="list-style-type: none"> <li>Enhance tourism in the area. The facility may become an attraction or a landmark within the region that people would want to come and see.</li> </ul>	+		P	L	Po	I	N/A	Yes	-	N/A	-



			Heritage resources	<ul style="list-style-type: none"> <li>It is not foreseen that the proposed activity will impact on heritage resources or vice versa.</li> </ul>	-		S	L	Po	PR	ML	Yes	-	L	-
			Electricity supply	<ul style="list-style-type: none"> <li>Generation of additional electricity. The facility will generate electricity that will be fed into the grid.</li> </ul>	+		I	L	D	I	N/A	Yes	-	N/A	-
			Local community	<ul style="list-style-type: none"> <li>The establishment of a Community Trust.</li> </ul>		+	L	L	Pr	I	N/A	Yes	- Kagiso, in consultation with the JMLM, should investigate the options for the establishment of a Community Development Trust.	N/A	Social Impact Assessment
			Electrical infrastructure	<ul style="list-style-type: none"> <li>Additional electrical infrastructure. The proposed solar facility will add to the existing electrical infrastructure and aid to lessen the reliance of electricity generation from coal-fired power stations.</li> </ul>	+		I	L	D	I	N/A	Yes	-	N/A	-
DECOMMISSIONING PHASE															
-	<u>Dismantlement of infrastructure</u> During the decommissioning phase the Solar PV Energy facility and its associated infrastructure will be dismantled.  <u>Rehabilitation of biophysical environment</u> The biophysical environment will be rehabilitated.	BIOPHYSICAL ENVIRONMENT	Fauna & Flora	<ul style="list-style-type: none"> <li>Re-vegetation of exposed soil surfaces to ensure no erosion in these areas.</li> </ul>	+		S	L	Po	N/A	N/A	Yes	- Re-vegetation of affected areas must be made a priority to avoid erosion.	N/A	-
			Air quality	<ul style="list-style-type: none"> <li>Air pollution due to the increase of traffic of construction vehicles.</li> </ul>	-		S	S	D	CR	NL	Yes	- Regular maintenance of equipment to ensure reduced exhaust emissions.	L	-
			Soil	<ul style="list-style-type: none"> <li>Soil degradation, including erosion.</li> <li>Disturbance of soils and existing land use (soil compaction).</li> <li>Physical and chemical degradation of the soils by construction vehicles (hydrocarbon spills).</li> </ul>		-	S	S	Pr	PR	M	Yes	- Re-vegetation of affected areas must be made a priority to avoid erosion.	M	-
			Geology	<ul style="list-style-type: none"> <li>It is not foreseen that the decommissioning phase will impact on the geology of the site or vice versa.</li> </ul>	N/A	N/A	N/A	N/A	N/A	N/A	N/A	N/A	N/A	N/A	N/A

			Existing services infrastructure	<ul style="list-style-type: none"> <li>Generation of waste that need to be accommodated at a licensed landfill site.</li> <li>Generation of sewage that need to be accommodated by the municipal sewerage system and the local sewage plant.</li> <li>Increase in construction vehicles.</li> </ul>	-	-	L	S	D	I	NL	Yes	-	L	-
			Ground water	<ul style="list-style-type: none"> <li>Pollution due to construction vehicles.</li> </ul>	-	-	S	S	Pr	CR	ML	Yes	-	L	-
			Surface water	<ul style="list-style-type: none"> <li>Increase in storm water run-off.</li> <li>Pollution of water sources due to soil erosion.</li> <li>Destruction of watercourses</li> </ul>	-	-	L	S	Pr	PR	ML	Yes	<ul style="list-style-type: none"> <li>Removal of any historically contaminated soil as hazardous waste.</li> <li>Removal of hydrocarbons and other hazardous substances by a suitable contractor to reduce contamination risks.</li> <li>Removal of all substances which can result in groundwater (or surface water) contamination.</li> </ul>	M	-
		SOCIAL/ECONOMIC ENVIRONMENT	Local unemployment rate	<ul style="list-style-type: none"> <li>Loss of employment.</li> </ul>	-	-	L	L	Po	PR	NL	Yes	- Kagiso should ensure that retrenchment packages are provided for all staff retrenched when the facility is decommissioned.	M	Social Impact Assessment
			Visual landscape	<ul style="list-style-type: none"> <li>Potential visual impact on visual receptors in close proximity to proposed facility.</li> </ul>	-	-	L	S	D	CR	NL	Yes	- Locate laydown and storage areas in zones of low visibility i.e. behind tall trees or in lower lying areas.	L	-
			Traffic volumes	<ul style="list-style-type: none"> <li>Increase in construction vehicles.</li> </ul>	-	-	L	S	Pr	CR	NL	Yes	- Movement of heavy construction vehicles	L	EAP to assess traffic impacts

													through residential areas should be timed to avoid peak morning and evening traffic periods. In addition, movement of heavy construction vehicles through residential areas should not take place over weekends.		
			Health & Safety	<ul style="list-style-type: none"> <li>Air/dust pollution.</li> <li>Road safety.</li> <li>Increased crime levels. The presence of construction workers on the site may increase security risks associated with an increase in crime levels as a result of influx of people in the rural area.</li> </ul>	-		L	S	Pr	PR	ML	Yes	<ul style="list-style-type: none"> <li>Demarcated routes to be established for construction vehicles to ensure the safety of communities, especially in terms of road safety and communities to be informed of these demarcated routes.</li> <li>Where dust is generated by trucks passing on gravel roads, dust mitigation to be enforced.</li> <li>Any infrastructure that would not be decommissioned must be appropriately locked and/or fenced off to ensure that it does not pose any danger to the community.</li> </ul>	L	-
			Noise levels	<ul style="list-style-type: none"> <li>The generation of noise as a result of construction vehicles, the use of machinery and people working on the site.</li> </ul>	-		L	S	D	CR	NL	Yes	<ul style="list-style-type: none"> <li>The decommissioning phase must aim to adhere to the relevant noise regulations and limit noise to within standard working hours in order to reduce disturbance of dwellings in close</li> </ul>	L	-

													proximity to the development.		
			Tourism industry	<ul style="list-style-type: none"> <li>Since there are no tourism facilities in close proximity to the site, the decommissioning activities will not have an impact on tourism in the area.</li> </ul>	N/A	N/A	N/A	N/A	N/A	N/A	N/A	N/A	N/A	N/A	N/A
			Heritage resources	<ul style="list-style-type: none"> <li>It is not foreseen that the decommissioning phase will impact on any heritage resources.</li> </ul>		-	S	S	Pr	PR	ML	Yes	-	L	Heritage Impact Assessment

<b>Nature of the impact:</b>	(N/A) No impact	(+) Positive Impact (-)	Negative Impact		
<b>Geographical extent:</b>	(S) Site;	(L) Local/District;	(P) Province/Region;	(I) International and National	
<b>Probability:</b>	(U) Unlikely;	(Po) Possible;	(Pr) Probable;	(D) Definite	
<b>Duration:</b>	(S) Short Term;	(M) Medium Term;	(L) Long Term;	(P) Permanent	
<b>Intensity / Magnitude:</b>	(L) Low;	(M) Medium;	(H) High;	(VH) Very High	
<b>Reversibility:</b>	(CR) Completely Reversible;	(PR) Partly Reversible;	(BR) Barely Reversible;	-	
<b>Irreplaceable loss of resources:</b>	(IR) Irreversible	(NL) No Loss;	(ML) Marginal Loss;	(SL) Significant Loss;	(CL) Complete Loss
<b>Level of residual risk:</b>	(L) Low;	(M) Medium;	(H) High;	(VH) Very High	-

## 6.2 KEY ISSUES IDENTIFIED

From the above it is evident that mitigation measures should be available for potential impacts associated with the proposed activity and development phases. The scoping methodology identified the following key issues which should be addressed in more detail in the EIA report.

### 6.2.1 Impacts during the construction phase

During the construction phase the following activities will have various potential impacts on the biophysical and socio-economic environment:

- Activity 11(i) (Regulation 983): *“The development of facilities or infrastructure for the transmission and distribution of electricity- (i) outside urban areas or industrial complexes with a capacity of more than 33 but less than 275 kilovolts.”*
- Activity 28(ii) (Regulation 983): *“Residential, mixed, retail, commercial, industrial or institutional developments where such land was used for agriculture or afforestation on or after 1998 and where such development (ii) will occur outside an urban area, where the total land to be developed is bigger than 1 hectare.”*
- Activity 1 (Regulation 984): *“The development of facilities or infrastructure for the generation of electricity where the electricity output is 20 megawatts or more.”*
- Activity 15 (Regulation 984): *“The clearance of an area of 20 hectare or more of indigenous vegetation...”*

During the construction phase minor negative impacts are foreseen over the short term. The latter refers to a period of months. The potentially most significant impacts relate to the impacts on the fauna and flora, soils, geology, existing services infrastructure, traffic impacts, socio-economic impacts such as the provision of temporary employment and other economic benefits, and the impacts on health and safety and heritage resources.

### 6.2.2 Impacts during the operational phase

During the operational phase the study area will serve as a solar plant. The potential impacts will take place over a period of 20 – 25 years. The negative impacts are generally associated with impacts on the fauna and flora, soils, geology, the pressure on existing services infrastructure, and visual impacts. The provision of sustainable services delivery also needs to be confirmed. The operational phase will have a direct positive impact through the provision of employment opportunities for its duration, and the generation of income to the local community.

### 6.2.3 Impacts during the decommissioning phase

The physical environment will benefit from the closure of the solar facility since the site will be restored to its natural state. The decommissioning phase will however potentially result in impact on soils, surface water, heritage objects and the loss of permanent employment. Skilled staff will be eminently employable and a number of temporary jobs will also be created in the process.

## 7 CUMULATIVE EFFECTS ASSESSMENT

---

This section aims to address the requirements of Section 2 of the NEMA to consider cumulative impacts as part of any environmental assessment process.

### 7.1 Introduction

The EIA Regulations (2014) determine that cumulative impacts, “in relation to an activity, means the past, current and reasonably foreseeable future impact of an activity, considered together with the impact of activities associated with that activity, that in itself may not be significant, but may become significant when added to the existing and reasonably foreseeable impacts eventuating from similar or diverse activities.” Cumulative impacts can be incremental, interactive, sequential or synergistic. EIAs have traditionally failed to come to terms with such impacts, largely as a result of the following considerations:

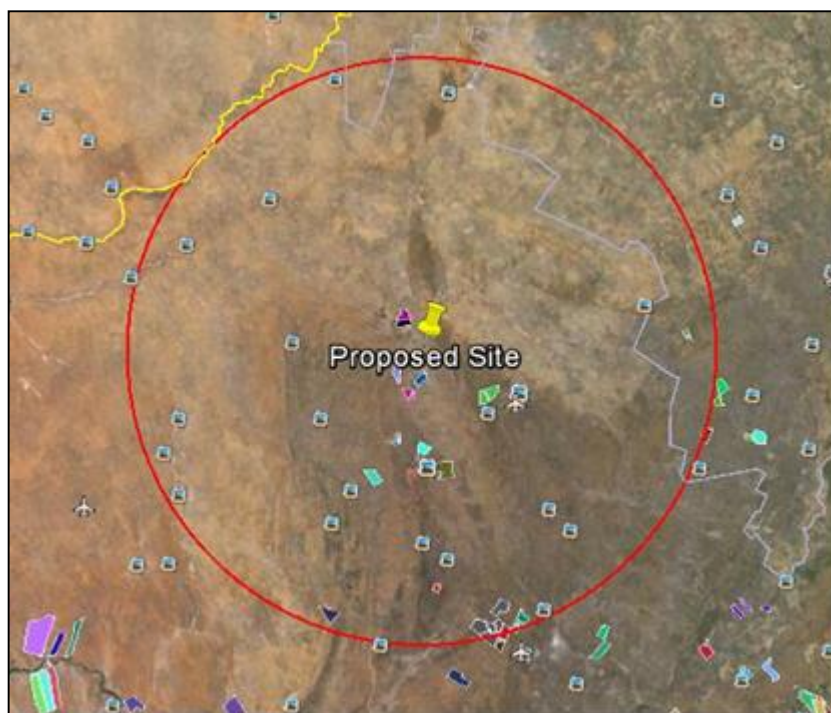
- Cumulative effects may be local, regional or global in scale and dealing with such impacts requires coordinated institutional arrangements;
- Complexity - dependent on numerous fluctuating influencing factors which may be completely independent of the controllable actions of the proponent or communities; and
- Project level investigations are ill-equipped to deal with broader biophysical, social and economic considerations.

Despite these challenges, cumulative impacts have been afforded increased attention in this Scoping Report and for each impact a separate section has been added which discusses any cumulative issues, and where applicable, draws attention to other issues that may contextualise or add value to the interpretation of the impact – refer to Appendix G. This chapter analyses the proposed project’s potential cumulative impacts in more detail by: (1) defining the geographic area considered for the cumulative effects analysis; (2) providing an overview of relevant past and present actions in the project vicinity that may affect cumulative impacts; (3) presenting the reasonably foreseeable actions in the geographic area of consideration; and (4) determining whether there are adverse cumulative effects associated with the resource areas analysed.

The term "Cumulative Effect" has for the purpose of this report been defined as: the summation of effects over time which can be attributed to the operation of the Project itself, and the overall effects on the ecosystem of the Project Area that can be attributed to the Project and other existing and planned future projects.

### 7.2 Geographic Area of Evaluation

The geographic area of evaluation is the spatial boundary in which the cumulative effects analysis was undertaken. The spatial boundary evaluated in this cumulative effects analysis generally includes an area of a 120km radius surrounding the proposed development – refer to figure 18 below.



**Figure 18:** Geographic area of evaluation

The geographic spread of PV solar projects, administrative boundaries and any environmental features (the nature of the landscape) were considered when determining the geographic area of investigation. It was argued that a radius of 120km would generally confine the potential for cumulative effects within this particular environmental landscape. The geographic area therefore only includes projects located within the Northern Cape Province. A larger geographic area may be used to analyse cumulative impacts based on a resource 's specific temporal or spatial impacts. For example, the socioeconomic cumulative analysis may include a larger area, as the construction workforce may draw from a much wider area. The geographic area of analysis is specified in the discussion of the cumulative impacts for that resource where it differs from the general area of evaluation described above.

### **7.3 Temporal Boundary of Evaluation**

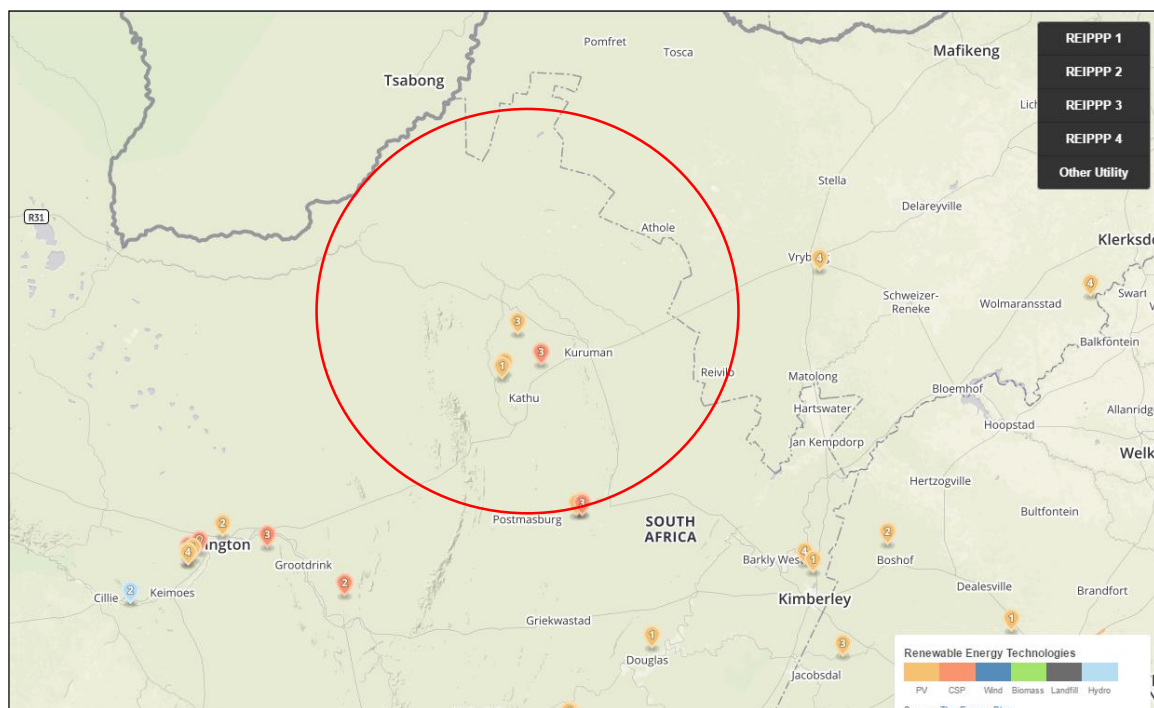
A temporal boundary is the timeframe during which the cumulative effects are reasonably expected to occur. The temporal parameters for this cumulative effects analysis are the anticipated lifespan of the Proposed Project, beginning in 2019 and extending out at least 20 years, which is the minimum expected project life of the proposed project. Where appropriate, particular focus is on near-term cumulative impacts of overlapping construction schedules for proposed projects in the area of evaluation.

### **7.4 OTHER PROJECTS IN THE AREA**

#### **7.4.1 Existing projects in the area**

According to the Energy Blog's database seven solar PV plant has been granted preferred bidders status within the geographic area of investigation – refer to figure 19 below. Two of the plants are fully operational:

- Adams Solar PV2 with a capacity of 82.5MW near Hotazel, Northern Cape Province (Awaiting construction – approved and financed).
- Kathu Solar Energy Facility with a capacity of 75MW near Kathu, Northern Cape Province (Fully operational).
- Sishen Solar Facility with a capacity of 74MW near Kathu, Northern Cape Province (Fully operational).
- Kathu Solar Park (CSP) with a capacity of 100MW near Kathu, Northern Cape Province (Awaiting construction – approved and financed).
- Redstone CSP with a capacity of 100MW near Postmasburg, Northern Cape Province (Awaiting construction – approved and financed).
- Lesedi Power Company with a capacity of 64MW near Postmasburg, Northern Cape Province (Fully operational.)
- Jasper Power Company with a capacity of 75MW near Postmasburg, Northern Cape Province (Fully operational.)



**Figure 19: Utility-scale Renewable Energy Generation Sites**

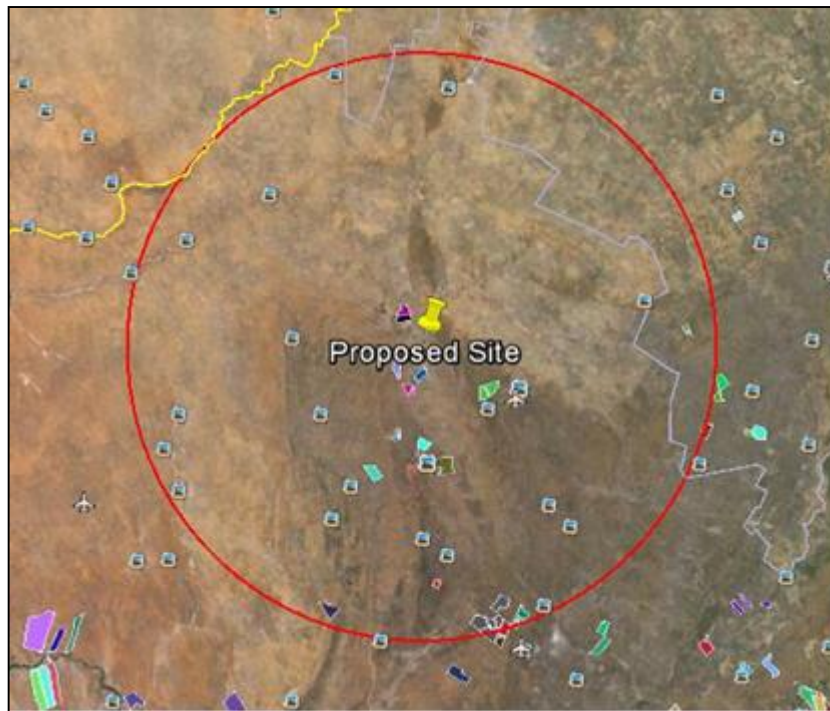
It is unclear whether other projects not related to renewable energy is or has been constructed in this area. In general, development activity in the area is focused on agriculture. Agriculture in the area is primarily associated with cattle grazing.

It is quite possible that future solar farm development may take place within the general area. The next section of this report will aim to evaluate the potential for solar projects for this area in the foreseeable future.



#### 7.4.2 Projects in the foreseeable future

As part of the SEA for Wind and Solar Energy in South Africa, the CSIR and the DEA mapped the location of all EIA applications submitted within South Africa – refer to figure 20 below. According to the DEA database approximately 13 applications have been submitted for renewable energy projects within the geographical area of investigation. The majority of these projects are located in close proximity to Kathu and Postmasburg.



**Figure 20:** National Wind and Solar PV SEA: Renewable Energy EIA Application Received before Dec. 2015

Environamics is also in the process of applying for Environmental Authorisation for four (4) PV projects in the area, namely:

- The proposed Tshepo Solar Power Plant near Hotazel, Northern Cape Province.
- The proposed Boitshoko Solar Power Plant near Kathu, Northern Cape Province.
- The proposed Life Solar Plant near Postmasburg, Northern Cape Province.
- The proposed Lutzburg Solar Plant near Postmasburg, Northern Cape Province.

#### 7.5 SPECIALIST INFORMATION ON CUMULATIVE EFFECTS

In line with the Terms of Reference (ToR) provided as part of the scoping report, specialists were asked to, where possible, take into consideration the cumulative effects associated with the proposed development and other projects which are either developed or in the process of being developed in the local area. The following sections present their findings.

### **7.5.1 Geology**

The desk top Geotechnical Study (refer to Appendix H1) confirmed that based on the available information a fatal flaw cannot be identified that may prematurely terminate the development of the proposed solar farm. There are two land types across the site, namely Ah9 in the west and Ae1 in the east. Soils of both land types are very similar and are predominantly deep, well-drained, very sandy red and yellow soils of the Hutton and Clovelly soil forms, although some shallower soils on underlying rock and hardpan occur in land type Ae1. According to the specialist the site should be regarded as suitable for the proposed development and no cumulative impacts are foreseen.

### **7.5.2 Soil, Land Capability and Agricultural Potential**

The major limitations to agriculture are predominantly climate related. The moisture availability (class 5 classification), with high variability of rainfall is a very severe limitation to agriculture in this area, which makes any cultivation without irrigation completely non-viable. The very sandy soils, with very limited water holding capacity are a further limitation. Land capability is the combination of soil suitability and climate factors. The site and surrounds has a land capability classification, on the 8 category scale, of Class 7 – non-arable, low potential grazing land. The grazing capacity on AGIS is classified as 18-21 hectares per large stock unit.

The Agricultural and Soils Impact Assessment (refer to Appendix H5) confirmed that these potential impacts will be localised within the site boundary area and that the measurable effect of the potential impacts may be reduced significantly with the proposed mitigation measures. There is however a potential for cumulative impacts to arise as a result of other projects that impact on agricultural land in the area. Although the loss of individual project portions of land has low significance, the cumulative impacts of land loss regionally can become more significant. However, despite this cumulative impact, it is still agriculturally strategic from a national perspective to steer as much of the country's renewable energy development as possible to sites such as this one, with very low agricultural potential. It is preferable to incur a higher cumulative loss in a region with low agricultural potential, than to lose agricultural land with a higher production potential elsewhere in the country. Because of the very low agricultural potential of the site considered in this report, its contribution to any cumulative impact is low.

### **7.5.3 Ecology**

The Ecological Fauna and Flora Habitat Survey (refer to Appendix H2) confirmed that cumulative impacts, from an ecological point of view, are those that will impact the natural faunal and floristic communities and habitats surrounding the proposed solar development, mainly by other similar developments and their associated infrastructure in its direct vicinity. As more and more similar developments occur in the direct vicinity of the currently proposed development, habitat losses and fragmentation will occur more frequently and populations of threatened, protected or other habitat specific species (both faunal and floral) will be put under increasing pressure through competition for suitable habitat. Fragmentation of habitats prevent the natural flow of ecosystem services and may have a detrimental effect on the gene pool of a species, which may lead to the loss of a population of such a species on fragmented

portions. Through a development, such as the one proposed for the study area, natural habitat is totally transformed and although some vegetation cover generally returns to these areas, microhabitats are totally destroyed and the area will probably never again be able to function without some human maintenance and management.

If for instance 250 ha of natural habitat for a protected tree species is locally destroyed and in the process 2,000 individual specimens of this species is destroyed, looking at this scenario from a cumulative impact perspective, if another five such developments take place in similar habitat within a short distance from each other, an estimated 12,000 specimens of this species will be cumulatively lost, which may then have a regional detrimental impact on the gene pool of that particular species as well as other species that are dependent on its presence in the ecosystem.

Currently limited data exists to measure and monitor the cumulative impact that the proposed type of development will have on a local and/or regional scale. Research in this regard is therefore urgently proposed. As mitigation for any cumulative impact this development may have, it is also proposed that where practically possible, a buffer of at least 100m (preferably more) of natural vegetation be left undisturbed surrounding this type of development in order to promote and preserve the flow of ecosystem services and gene pools along these corridors as well as the necessary habitat for threatened, protected or other habitat sensitive species.

#### **7.5.4 Birds**

The Avifaunal Study (refer to Appendix H3) states that cumulative impacts are those that will impact the general avian communities in and around the Kagiso solar development, mainly by other solar farms and associated infrastructure. This will happen via the same factors identified here viz: collision, avoidance and displacement. Therefore, we need to know as a starting point the number of solar farms around the region within 50 km, and secondly, to know their impact on avifauna.

Given the general assumption that footprint size and bird impacts are linearly related for CSP solar farms, a starting point in determining cumulative impacts is to determine:

- the number of bird displaced per unit area, by habitat destruction, or disturbed or displaced by human activity;
- the number of birds killed by collision with the structures on site;
- the number of birds killed by collision with infrastructure leading away from the site;
- the number of birds killed by flying through the solar flux of CSP tower sites.

As of the end of 2015, there were 13 proposed or approved renewable energy farms of various sizes within 120 km of Kagiso.

Because there are no post-construction mortality data or displacement data for any of these aspects in South Africa, it is a futile exercise to attempt to put any figures to the Cumulative Impacts for birds in and around the solar sites. Once the data is collected and published (or

released to other specialists) for a minimum of a year's monitoring, we can then quantify this aspect. On present data we cannot even guesstimate the cumulative impact.

#### **7.5.5 Social Impact Assessment**

The Social Impact Assessment (refer to Appendix H8) indicates that from a social impact point of view the project represents an important development opportunity for the communities surrounding Kagiso SPP. Should it be approved, it will not only supply the national grid with much needed clean power, but will also provide a number of opportunities for social upliftment. The cumulative impacts for each of the potential social impacts were assessed throughout the report. The most significant cumulative social impacts are both positive and negative: the community will have an opportunity to better their social and economic well-being, since they will have the opportunity to upgrade and improve skills levels in the area, but impacts on family and community relations may, in some cases, persist for a long period of time. Also in cases where unplanned / unwanted pregnancies occur or members of the community are infected by an STD, specifically HIV and or AIDS, the impacts may be permanent and have long term to permanent cumulative impacts on the affected individuals and/or their families and the community.

#### **7.5.6 Visual**

The Visual Impact Assessment (refer to Appendix H4) confirmed that the construction and operation of the PV facility may increase the cumulative visual impact together with farming activities, dust on gravel roads, existing Eskom power line infrastructure and new projects, mines in the area and other proposed solar power facilities in the area. The significance of the visual impacts can only be determined once projects have been awarded preferred bidder status. However, taking into account the already disturbed visual surround due to extensive mining activities in the area and all the positive factors of such a development including economic factors, social factors and sustainability factors, the visual impact of this proposed development will be insignificant and is suggested that the development commence, from a visual impact point of view.

#### **7.5.7 Heritage**

The Heritage Impact Assessment (Refer to Appendix H6) concluded that no sites, features or objects dating to the Stone Age, Iron Age or Historic period were identified in the study area. Therefore, no cumulative impacts are foreseen.

The Palaeontological Impact Assessment (Refer to Appendix H7) also confirmed that there are no areas within the footprint area that need to be avoided. Potential for cumulative impacts of this project on paleontological resources is considered to be low locally and regionally.

#### **7.5.8 Traffic**

The impact of the construction traffic on the general traffic and the surrounding communities along the haulage route is considered to be low. All the components will be transported by truck from Durban or Cape Town to the site using the routes as defined. Both these routes are of acceptable standard and should not impede travel from a riding quality perspective, both

these routes should also be able to accommodate the additional traffic. No abnormal loads will be transported to the site. The access to the site will be obtained via the road R31. The development of a solar farm on the Remaining Extent of the farm Kameel Aar 315 in the Northern Cape Province is therefore supported, but may result in a minor cumulative impacts if other projects in the area are approved.

## 7.6 IMPACT ASSESSMENT

Following the definitions of the term, the “residual effects on the environment”, i.e. effects after mitigation measures have been put in place, combined with the environmental effects of past, present and future projects and activities will be considered in this assessment. Also, a “combination of different individual environmental effects of the project acting on the same environmental component” can result in cumulative effects.

### 7.6.1 Potential Cumulative Effects

The receptors (hereafter referred to as Valued Ecosystem Components (VECs) presented in Section 6 (refer to the matrix analysis) have been examined alongside other past, present and future projects for potential adverse cumulative effects. A summary of the cumulative effects discussed are summarized in table 7.1. There have been 14 specific VECs identified with reference to the Solar Project (table 6.2), which relates to the biophysical and socio-economic environments. table 7.1 indicates the potential cumulative effects VECs and the rationale for inclusion/exclusion.

**Table 7.1:** Potential Cumulative Effects for the proposed project

Valued Ecosystem Components (VECs)	Rationale for Inclusion / Exclusion	Level of Cumulative Effect
<b>Construction Phase</b>		
Loss or fragmentation of indigenous natural fauna and flora	The loss of habitat on-site has the potential to add to the cumulative impacts that habitat loss in the region is having on avifauna. Other projects will also constitute the removal of more protected tree species as the ones on site and may have a regional detrimental impact.	- Medium
Avifauna	Development of multiple solar energy facilities in this region may have cumulative impacts on birds, this will happen via the same factors identified here viz: collision, avoidance and displacement.	- Medium
Loss or fragmentation of habitats	The developments are located in an area with numerous protected plant and tree	- Medium

	species as well as Red Data Bird species. Removal of large areas of these habitats may have a detrimental effect on loss of habitats.	
Soil erosion	The largest risk factor for soil erosion will be during the operational phase when storm water run-off from the surfaces of the photovoltaic panels could cause erosion. Should these impacts occur, there may be a cumulative impact on storm water runoff in the study area. The specialist rated the cumulative impact of soil erosion as negligible.	- Low
Impacts of the geology on the proposed development	A fatal flaw cannot be identified that may prematurely terminate the development of the proposed solar farm.	N/A
Generation of waste	An additional demand for landfill space could result in significant cumulative impacts if services become unstable or unavailable, which in turn would negatively impact on the local community.	- Medium
Employment opportunities	The community will have an opportunity to better their social and economic well-being, since they will have the opportunity to upgrade and improve skills levels in the area.	+ Medium
Visual intrusion	The construction of the PV plant and 132kV evacuation line may increase the cumulative visual impact together with farming and mining activities and people using the Regional Road adjacent to site. Dust will be the main factor to take into account.	- Low
Increase in construction vehicles	If damage to roads is not repaired, then this will affect the farming and mining activities in the area and result in higher maintenance costs for vehicles of locals and other road users. The costs will be borne by road users who were not responsible for the damage. However, the	- Negligible

	roads to be used from either Durban and Cape Town should be able to accommodate the construction vehicle traffic.	
Impact of construction workers on local communities & influx of job seekers	Impacts on family and community relations that may, in some cases, persist for a long period of time. Also in cases where unplanned / unwanted pregnancies occur or members of the community are infected by an STD, specifically HIV and or AIDS, the impacts may be permanent and have long term to permanent cumulative impacts on the affected individuals and/or their families and the community.	- Medium
Risk to safety, livestock and farm infrastructure.	If fire spreads to neighbouring properties, the effects will be compounded. Negligible cumulative effects, provided losses are compensated for.	- Negligible
Increased risks of grass fires.	The risk of grass fires can be mitigated and managed.	- Negligible
<b>Operational Phase</b>		
Loss of agricultural land	It is preferable to incur a higher cumulative loss in a region with low agricultural potential, than to lose agricultural land with a higher production potential elsewhere in the country. Because of the very low agricultural potential of the site considered in this report, its contribution to any cumulative impact is low.	- low
Change in land use	Overall loss of farmland could affect the livelihoods of the affected farmers, their families, and the workers on the farms and their families. The impacts can however be mitigated via relocation of farm workers and disturbed areas can be rehabilitated after the construction phase.	- Low
Visual intrusion	The operation of the PV plant and 132kV evacuation line may increase the cumulative visual impact together with	- Low

	the existing Eskom power infrastructure, mining in the area and agricultural infrastructure.	
Consumption of water	An additional demand on water sources could result in a significant cumulative impact with regards to the availability of water.	- Medium
Generation of additional electricity	The evacuation of generated electricity into the Eskom grid will strengthen and stabilize the grid (especially in the local area).	+ Low
Establishment of a community trust	Promotion of social and economic development and improvement in the overall well-being of the community.	+ Medium
Change in the sense of place	The construction of the solar plant and associated infrastructure will increase the cumulative change in the sense of place due to industrial type infrastructure that is being proposed and the existing mining infrastructure in the region.	- Low
Development of infrastructure for the generation of clean, renewable energy	Reduce carbon emissions via the use of renewable energy and associated benefits in terms of global warming and climate change.	+ Medium
<b>Decommissioning Phase</b>		
Visual intrusion	The decommissioning of the PV plant and 132kV evacuation line may increase the cumulative visual impact together with farming and mining activities and people using the existing roads adjacent to site. Dust and housekeeping will be the main factors to take into account.	- Low
Generation of waste	An additional demand on municipal services could result in significant cumulative impacts with regards to the availability of landfill space.	- Medium



## 7.7 CONCLUSION

This chapter of the EIR addressed the cumulative environmental effects of the construction, operation and decommissioning project phases. The information to date has shown that no significant adverse residual impacts are likely. However, cumulative impacts could arise as other similar projects are constructed in the area.

The potential most significant cumulative impacts relate to:

- Cumulative effects during construction phase:
  - Loss or fragmentation of indigenous natural fauna and flora (- Medium)
  - Loss or fragmentation of habitats (- Medium)
  - Generation of waste (- Medium)
  - Temporary employment (+ Medium)
  - Impact of construction workers on local communities & influx of job seekers (- Medium)
  - Traffic impacts (- Medium)
- Cumulative effects during the operational phase:
  - Consumption of water (- Medium)
  - Establishment of a community trust (+ Medium)
  - Development of infrastructure for the generation of clean, renewable energy (+ Medium)
- Cumulative effects during the decommissioning phase:
- Generation of waste (- Medium)

## 8 PLAN OF STUDY FOR EIA

---

This section aims to address the following requirements of the regulations:

**Appendix 2.** (2) A scoping report (...) must include -

- (i) a plan of study for undertaking the EIA process to be undertaken, including-
  - (i) a description of the alternatives to be considered and assessed within the preferred site, including the option of not proceeding with the activity;
  - (ii) a description of the aspects to be assessed as part of the EIA process;
  - (iii) aspects to be assessed by specialists;
  - (iv) a description of the proposed method of assessing the environmental aspects, including a description of the proposed method of assessing the environmental aspects including aspects to be assessed by specialists;
  - (v) a description of the proposed method of assessing duration and significance;
  - (vi) an indication of the stages at which the competent authority will be consulted;
  - (vii) particulars of the public participation process that will be conducted during the EIA process; and
  - (viii) a description of the tasks that will be undertaken as part of the EIA process;
  - (ix) identify suitable measures to avoid, reverse, mitigate or manage identified impacts and to determine the extent of the residual risks that need to be managed and monitored.

### 8.1 INTRODUCTION

This section gives a brief outline of the Plan of Study for EIA (PoSEIA) and the tasks that will be undertaken and the anticipated process to meet the objectives for the EIA phase. The approach to the EIA is to focus on those key issues identified for the preferred alternative. This will ensure that the EIA focus on the most significant impacts and in the process save time and resources.

### 8.2 ANTICIPATED OUTCOMES OF THE IMPACT ASSESSMENT PHASE

The purpose of the EIA phase is to assess issues identified in the scoping phase and will include an environmental management programme (EMPr). The EMPr will provide information on the proposed activity and the manner in which potential impacts will be minimized or mitigated. The EIA report will comply with Appendix 3 and will:

- Determine the policy and legislative context within which the activity is located and document how the proposed activity complies with and responds to the policy and legislative context;
- Describe the need and desirability of the proposed activity, including the need and desirability of the activity in the context of the preferred location;
- Identify the location of the development footprint within the preferred site based on an impact and risk assessment process inclusive of cumulative impacts and a ranking process of all the identified development footprint alternatives focusing on the geographical, physical, biological, social, economic, heritage and cultural aspects of the environment;
- Determine the—
  - (i) nature, significance, consequence, extent, duration and probability of the impacts occurring to inform identified preferred alternatives; and
  - (ii) degree to which these impacts-
    - (aa) can be reversed;
    - (bb) may cause irreplaceable loss of resources, and
    - (cc) can be avoided, managed or mitigated;
- Identify the most ideal location for the activity within the preferred site based on the lowest level of environmental sensitivity identified during the assessment;
- Identify, assess, and rank the impacts the activity will impose on the preferred location through the life of the activity;
- Identify suitable measures to avoid, manage or mitigate identified impacts; and
- Identify residual risks that need to be managed and monitored.

### **8.3 TASKS TO BE UNDERTAKEN**

The following sections describe the tasks that will be undertaken as part of the EIA process.

#### **8.3.1 Project Description**

Further technical and supporting information will be gathered to provide a more detailed project description. This will include a detailed site layout plan that will be compiled once the low – medium areas of sensitivity have been indicated by the specialists.

#### **8.3.2 Consideration of alternatives**

The following project alternatives will be investigated in the EIR:

- Design/Layout alternatives: In terms of the actual layout of the proposed PV plant which will only be assessed for the preferred site alternative.

### 8.3.3 Compilation of Environmental Impact Report

A Draft EIR will be compiled to meet the content requirements as per Appendix 3 of GNR982 of the EIA Regulations (4 December 2014) and will also include a draft Environmental Management Programme containing the aspects contemplated in Appendix 4 of GNR982.

### 8.3.4 Public participation

All registered I&APs and relevant State Departments will be given the opportunity to review the Draft Environmental Impact Report in accordance with Regulation R982. A minimum of 30 days commenting period will be allowed and all stakeholders and I&APs will be given an opportunity to forward their written comments within that period. All issues identified during this public review period will be documented and compiled into a Comments and Response Report to be included as part of the Final EIR to be submitted to the National Department of Environmental Affairs (DEA).

## 8.4 ASPECTS ASSESSED

Table 8.1 below provides a summary of the aspects that have been assessed. The aspects are also linked to specialist information obtained.

**Table 8.1:** Aspects assessed

Aspects	Potential impacts	Description of the impact	Specialist studies / technical information
Construction of the PV Solar facility	<ul style="list-style-type: none"><li>Impacts on the fauna and flora</li></ul>	Refer to table 6.2	Ecological Fauna and Flora Habitat Survey & Avifauna study
	<ul style="list-style-type: none"><li>Impacts on agricultural potential (soils)</li></ul>	Refer to table 6.2	Agricultural and Soils Impact Assessment
	<ul style="list-style-type: none"><li>Impacts associated with the geology of the site</li></ul>	Refer to table 6.2	Geotechnical study
	<ul style="list-style-type: none"><li>Impacts on existing services infrastructure</li></ul>	Refer to table 6.2	Confirmation from the Local Municipality
	<ul style="list-style-type: none"><li>Temporary employment, impacts on health and safety</li></ul>	Refer to table 6.2	Social Impact Assessment
	<ul style="list-style-type: none"><li>Impacts on heritage resources</li></ul>	Refer to table 6.2	Heritage Impact Assessment &

			Palaeontological Heritage Assessment
	<ul style="list-style-type: none"> <li>Impacts on Traffic</li> </ul>	Refer to table 6.2	EAP to assess traffic impacts
Operation of the PV Solar facility	<ul style="list-style-type: none"> <li>Impacts on the fauna and flora</li> </ul>	Refer to table 6.2	Ecological Fauna and Flora Habitat Survey & Avifauna study
	<ul style="list-style-type: none"> <li>Impacts on agricultural potential (soils)</li> </ul>	Refer to table 6.2	Agricultural and Soils Impact Assessment
	<ul style="list-style-type: none"> <li>Impacts associated with the geology of the site</li> </ul>	Refer to table 6.2	Geotechnical study as part of soil study
	<ul style="list-style-type: none"> <li>Increased consumption of water</li> </ul>	Refer to table 6.2	EAP assessment
	<ul style="list-style-type: none"> <li>Pressure on existing services infrastructure</li> </ul>	Refer to table 6.2	Confirmation from the Local Municipality
	<ul style="list-style-type: none"> <li>Visual Impact</li> </ul>	Refer to table 6.2	Visual Impact Assessment
	<ul style="list-style-type: none"> <li>Provision of employment &amp; generation of income for the local community</li> </ul>	Refer to table 6.2	Social Impact Assessment
Decommissioning of the PV Solar facility	<ul style="list-style-type: none"> <li>Impacts on agricultural potential (soil)</li> </ul>	Refer to table 6.2	Agricultural and Soils Impact Assessment
	<ul style="list-style-type: none"> <li>Socio-economic impacts (loss of employment)</li> </ul>	Refer to table 6.2	Social Impact Assessment
Cumulative Impacts	<ul style="list-style-type: none"> <li>Cumulative biophysical impacts resulting from similar developments in close proximity to the proposed activity.</li> </ul>	Refer to table 6.2	EAP assessment

#### 8.4.1 Specialist studies

Based on the initial descriptions of potential environmental impacts or aspects (refer to table 7.1), specialists have been subcontracted to assess the potential impacts that may be significant. The specialist studies assess impacts on both the social and the biophysical environment and also help in identifying ways that can help to mitigate the envisaged impacts. The following specialist studies have been included to address the potentially most significant impact as identified during the scoping phase – refer to table 6.2:

- Geotechnical report as part of the soil study: To determine whether the geotechnical conditions at the site are favorable for the development and construction of a solar PV plant.
- Heritage report: To determine whether the proposed activity will impact on any heritage or archeological artifacts.
- Ecological fauna and flora habitat survey: To determine what the impact of the proposed activity will be on the ecology (fauna and flora) in the area.
- Avifaunal Study: To determine what the impacts of the proposed activity will have on the bird (Avifauna) in the area.
- Visual Impact Assessment: To determine to what extent the proposed activity will be visually intrusive to the surrounding communities or other receptors.
- Agricultural and Soils Impact Assessment: To determine how the proposed activity will impact on soil and agricultural resources.
- Social Impact Assessment: To determine how the proposed activity will impact on the socio-economic environment.
- Paleontological Impact Assessment: To determine the impacts on paleontological resources.

#### 8.4.2 Terms of reference for specialist studies

Specialists in their field of expertise have considered baseline data and identified and assessed impacts according to predefined rating scales. Specialists have also suggested optional or essential ways in which to mitigate negative impacts and enhance positive impacts. Further, specialists have, where possible, taken into consideration the cumulative effects associated with this and other projects which are either developed or in the process of being developed in the local area.

The results of these specialist studies have been integrated into the Final Scoping Report (DSR). The Terms of Reference (ToR) or general requirements proposed for the inputs are presented below and stakeholders are encouraged to comment and provide input on these.

#### 8.4.2.1 General Requirements

Specialists' reports must comply with Appendix 6 of GNR982 published under sections 24(5), and 44 of the National Environmental Management Act, 1998 (Act No. 107 of 1998), as amended and whereby the following are to be included:

- The details of-
  - the specialist who prepared the report; and
  - the expertise of that specialist to compile a specialist report including a curriculum vitae;
- A declaration that the specialist is independent in a form as may be specified by the competent authority;
- An indication of the scope of, and the purpose for which, the report was prepared;
- The date and season of the site investigation and the relevance of the season to the outcome of the assessment;
- A description of the methodology adopted in preparing the report or carrying out the specialised process; the specific identified sensitivity of the site related to the activity and its associated structures and infrastructure;
- An identification of any areas to be avoided, including buffers;
- A map superimposing the activity including the associated structures and infrastructure on the environmental sensitivities of the site including areas to be avoided, including buffers;
- A description of any assumptions made and any uncertainties or gaps in knowledge;
- A description of the findings and potential implications of such findings on the impact of the proposed activity, including identified alternatives on the environment;
- Any mitigation measures for inclusion in the EMPr;
- Any conditions for inclusion in the environmental authorisation;
- Any monitoring requirements for inclusion in the EMPr or environmental authorisation;
- A reasoned opinion-
  - as to whether the proposed activity or portions thereof should be authorised; and
  - if the opinion is that the proposed activity or portions thereof should be authorised, any avoidance, management and mitigation measures that should be included in the EMPr, and where applicable, the closure plan;
- A description of any consultation process that was undertaken during the course of preparing the specialist report;

- A summary and copies of any comments received during any consultation process and where applicable all responses thereto; and
- Any other information requested by the competent authority.

In addition to the above, specialists are expected to:

- Review the Scoping Report, with specific reference to the Comments and Response Report to familiarize with all relevant issues or concerns relevant to their field of expertise;
- In addition to the impacts listed in this Scoping Report, identify any issue or aspect that needs to be assessed and provide expert opinion on any issue in their field of expertise that they deem necessary in order to avoid potential detrimental impacts;
- Assess the degree and extent of all identified impacts (including cumulative impacts) that the preferred project activity and its proposed alternatives, including that of the no-go alternative, may have;
- Identify and list all legislation and permit requirements that are relevant to the development proposal in context of the study;
- Reference all sources of information and literature consulted; and
- Include an executive summary to the report.

#### **8.4.2.2 Proposed ToR for the Geotechnical Study**

The geotechnical study will present the findings of a preliminary evaluation of the geotechnical conditions at the proposed Kagiso solar farm project, the investigation should be carried according to standard practice codes and guidelines. The aims of the investigation will be to:

- Verify the underlying geology and soil cover by means of limited surface mapping.
- Assessing the suitability of the area with regard to the proposed development, based on the available geological- and geotechnical information.
- Identify the general constraints and required precautionary measures that may be required for the proposed development from a planning perspective.
- Make recommendations on the most-, intermediately- and least suitable portions of the project area with regard to the proposed development.

It must be noted that this investigation is requested for planning purposes only and will not be utilized for detailed design and construction. The following actions will be excluded from this investigation:

- Detailed flood line delineation.
- Detailed slope analysis.



- Soil mechanical analysis and sampling for laboratory analysis.

#### **8.4.2.3 Proposed ToR for the Heritage Impact Assessment**

A Heritage Impact Assessment will be undertaken for the site in accordance with the requirements of Section 38(3) of the NHRA. The scope of work for this study will consist of:

- A desk-top investigation of the area, in which all available literature, reports, databases and maps were studied; and
- A visit to the proposed development area.

The objectives will be to:

- Identify possible archaeological, cultural and historic sites within the proposed development area;
- Document (GPS coordinates and map) all sites, objects and structures identified on the candidate sites;
- Evaluate the potential impacts of construction, operation and maintenance of the proposed development on archaeological, cultural and historical resources;
- Recommend mitigation measures to ameliorate any negative impacts on areas of archaeological, cultural or historical importance; and
- Consider relevant guidelines.

#### **8.4.2.4 Proposed ToR for the Ecological Fauna and Flora Habitat Survey**

The proposed ToR for the Ecological Fauna and Flora Habitat Survey is as follows:

- Provide a detailed fauna and flora habitat survey;
- Provide a detailed habitat survey of possible threatened or localised plant species, vertebrates and invertebrates;
- Take count and map the location (and provide coordinates) of any protected species or sensitive habitats found on site.
- Record possible host plants or food plants of fauna such as butterflies;
- Evaluate the conservation importance and significance of the site with special emphasis on the current status of threatened species;
- Conduct a literature investigation of possible species that may occur on site;
- Identify potential ecological impacts on fauna and flora that could occur as a result of the development;

- An assessment of the potential direct and indirect impacts resulting from the proposed development during the construction, operation and decommission phases; and
- Make recommendations to reduce or minimise impacts, should the development be approved.

#### **8.4.2.5 Proposed ToR for the Visual Impact Assessment**

The proposed ToR for this Visual Impact Assessment is as follows:

- Conduct a desktop review of available information that can support and inform the specialist study;
- Describe the receiving environment and the visual absorption for the proposed project;
- Conduct a field survey to determine the actual or practical extent of potential visibility of the proposed development;
- Conduct a photographic survey of the landscape surrounding the development;
- Identify issues and potential visual impacts for the proposed project, to be considered in combination with any additional relevant issues that may be raised through the public consultation process;
- Identify possible cumulative impacts related to the visual aspects for the proposed project;
- Assess the potential impacts, both positive and negative, associated with the proposed project for the construction, operation and decommissioning phases;
- Identify management actions to avoid or reduce negative visual impacts; and to enhance positive benefits of the project; and
- Use mapping and photo-montage techniques as appropriate.

#### **8.4.2.6 Proposed ToR for the Agricultural and Soils Impact Assessment**

The purpose of the Agricultural and Soils Impact Assessment will be to determine the soil forms and current land capability of the area where the proposed project will be situated. The objectives of this study will be to:

- Describe the soils (distribution, types, depth, surface features, suitability for agriculture, physical and chemical characteristics, fertility, erodability, dry land production potential and irrigation potential);
- Determine the pre-development land capability;
- Determine the present land use;
- Conduct an Impact Assessment for the soils and land capability which will feed into the overall Environmental Impact Assessment;

- Propose mitigation measures for the impacts to form part of the Environmental Management Program; and
- Compile a Agricultural and Soils Impact Assessment report to meet the Department of Agriculture's requirements and to encompass the findings of the desktop assessment, soil survey, agricultural evaluation and impact assessment.

The soil assessment must include the following as per DEAs requirements:

- Identification of the soil forms present on site;
- The size of the area where a particular soil form is found;
- GPS reading of soil survey points;
- The depth of the soil at each survey point;
- Soil colour;
- Limiting factors;
- Clay content; and
- Slope of the site.

#### **8.4.2.7 Proposed ToR for Avifaunal Study**

The Avifaunal Study should include the following:

- Desktop analysis of existing literature and data;
- Site visit during dry season;
- Site visit during wet season;
- Identification of high risk species, particularly Red listed and other priority species that might be impacted by the proposed activity;
- Description of assessment of the significance of likely impacts on priority avifauna;
- Mitigation measures to reduce the envisaged impacts on birds.

#### **8.4.2.8 Proposed ToR for the Paleontological Impact Assessment**

The scope of work for this study will consist of:

- A desktop investigation of the area, in which all geological maps, published scientific literature, previous paleontological impact studies in the same region and the author's field of experience (consultation with professional colleagues as well as examination of institutional fossil collections and data) should be studied and used.

- Based on the outcome of the desktop study and the comments obtained from SAHRA, the need for a field assessment must be determined. The desktop investigation must be supplemented with a field assessment if required.
- Assess the potential impacts, based on a supplied methodology.
- Describe mitigation measures to address impacts during the construction, operation and decommissioning stages.
- Describe cumulative impacts of the project on paleontological resources in both the local study area regional study area and the proponent's plans to manage those effects.
- Supply the client with geo-referenced GIS shape files of any sensitive areas.

#### **8.4.2.9 Proposed ToR for the Social Impact Assessment**

The terms of reference for the Social Impact Assessment (SIA) are as follow:

- Provide a description of the environment that may be affected by the activity and the manner in which the environment may be affected by the proposed facility;
- Provide a description and assessment of the potential social issues associated with the proposed facility; and
- Identify enhancement and mitigation aimed at maximising opportunities and avoiding and or reducing negative impacts.

The key activities in the SIA process as embodied in the Western Cape Department of Environmental Affairs and Development Planning Guidelines for Social Impact Assessment (February 2007) will include:

- Describing and obtaining an understanding of the proposed intervention (type, scale, location), the communities likely to be affected and determining the need and scope of the SIA;
- Collecting baseline data on the current social environment and historical social trends;
- Identifying and collecting data on the Social Impact Assessment variables and social change processes related to the proposed intervention. This requires consultation with affected individuals and communities;
- Assessing and documenting the significance of social impacts associated with the proposed intervention; and
- Identifying alternatives and mitigation measures.

In this regard the study should involve:

- Review of demographic data from the Census Survey;
- Review of relevant planning and policy frameworks for the area;
- Site specific information collected during the site visit to the area and interviews with key stakeholders;
- Review of information from similar projects; and
- Identification of social issues associated with the proposed project.

#### **8.4.2.10 Expected deliverables**

The specialist is expected to prepare a report that addresses the scope of the work as set out above. The report should be prepared in a suitable font (such as Arial 12) and submitted to Environamix in draft form. If accepted by Environamix and the client an electronic copy should be provided for submission to the Department.

### **8.5 METHOD OF ENVIRONMENTAL ASSESSMENT**

The environmental assessment aims to identify the various possible environmental impacts that could result from the proposed activity. Different impacts need to be evaluated in terms of their significance and in doing so highlight the most critical issues to be addressed.

Significance is determined through a synthesis of impact characteristics which include context and intensity of an impact. Context refers to the geographical scale i.e. site, local, national or global whereas intensity is defined by the severity of the impact e.g. the magnitude of deviation from background conditions, the size of the area affected, the duration of the impact and the overall probability of occurrence. Significance is calculated as shown in table 8.2.

Significance is an indication of the importance of the impact in terms of both physical extent and time scale, and therefore indicates the level of mitigation required. The total number of points scored for each impact indicates the level of significance of the impact.

#### **8.5.1 Impact Rating System**

Impact assessment must take account of the nature, scale and duration of impacts on the environment whether such impacts are positive or negative. Each impact is also assessed according to the project phases:

- planning
- construction
- operation
- decommissioning

Where necessary, the proposal for mitigation or optimisation of an impact should be detailed. A brief discussion of the impact and the rationale behind the assessment of its significance should also be included. The rating system is applied to the potential impacts on the receiving environment and includes an objective evaluation of the mitigation of the impact. In assessing the significance of each impact the following criteria is used:

**Table 8.2:** The rating system

<b>NATURE</b>		
Include a brief description of the impact of environmental parameter being assessed in the context of the project. This criterion includes a brief written statement of the environmental aspect being impacted upon by a particular action or activity.		
<b>GEOGRAPHICAL EXTENT</b>		
This is defined as the area over which the impact will be experienced.		
1	Site	The impact will only affect the site.
2	Local/district	Will affect the local area or district.
3	Province/region	Will affect the entire province or region.
4	International and National	Will affect the entire country.
<b>PROBABILITY</b>		
This describes the chance of occurrence of an impact.		
1	Unlikely	The chance of the impact occurring is extremely low (Less than a 25% chance of occurrence).
2	Possible	The impact may occur (Between a 25% to 50% chance of occurrence).
3	Probable	The impact will likely occur (Between a 50% to 75% chance of occurrence).
4	Definite	Impact will certainly occur (Greater than a 75% chance of occurrence).
<b>DURATION</b>		
This describes the duration of the impacts. Duration indicates the lifetime of the impact as a result of the proposed activity.		

1	Short term	The impact will either disappear with mitigation or will be mitigated through natural processes in a span shorter than the construction phase (0 – 1 years), or the impact will last for the period of a relatively short construction period and a limited recovery time after construction, thereafter it will be entirely negated (0 – 2 years).
2	Medium term	The impact will continue or last for some time after the construction phase but will be mitigated by direct human action or by natural processes thereafter (2 – 10 years).
3	Long term	The impact and its effects will continue or last for the entire operational life of the development, but will be mitigated by direct human action or by natural processes thereafter (10 – 30 years).
4	Permanent	The only class of impact that will be non-transitory. Mitigation either by man or natural process will not occur in such a way or such a time span that the impact can be considered indefinite.
<b>INTENSITY/ MAGNITUDE</b>		
Describes the severity of an impact.		
1	Low	Impact affects the quality, use and integrity of the system/component in a way that is barely perceptible.
2	Medium	Impact alters the quality, use and integrity of the system/component but system/component still continues to function in a moderately modified way and maintains general integrity (some impact on integrity).
3	High	Impact affects the continued viability of the system/component and the quality, use, integrity and functionality of the system or component is severely impaired and may temporarily cease. High costs of rehabilitation and remediation.
4	Very high	Impact affects the continued viability of the system/component and the quality, use, integrity and

		functionality of the system or component permanently ceases and is irreversibly impaired. Rehabilitation and remediation often impossible. If possible rehabilitation and remediation often unfeasible due to extremely high costs of rehabilitation and remediation.
<b>REVERSIBILITY</b>		
This describes the degree to which an impact can be successfully reversed upon completion of the proposed activity.		
1	Completely reversible	The impact is reversible with implementation of minor mitigation measures.
2	Partly reversible	The impact is partly reversible but more intense mitigation measures are required.
3	Barely reversible	The impact is unlikely to be reversed even with intense mitigation measures.
4	Irreversible	The impact is irreversible and no mitigation measures exist.
<b>IRREPLACEABLE LOSS OF RESOURCES</b>		
This describes the degree to which resources will be irreplaceably lost as a result of a proposed activity.		
1	No loss of resource	The impact will not result in the loss of any resources.
2	Marginal loss of resource	The impact will result in marginal loss of resources.
3	Significant loss of resources	The impact will result in significant loss of resources.
4	Complete loss of resources	The impact is result in a complete loss of all resources.
<b>CUMULATIVE EFFECT</b>		
This describes the cumulative effect of the impacts. A cumulative impact is an effect which in itself may not be significant but may become significant if added to other existing or potential impacts emanating from other similar or diverse activities as a result of the project activity in question.		
1	Negligible cumulative impact	The impact would result in negligible to no cumulative effects.



2	Low cumulative impact	The impact would result in insignificant cumulative effects.
3	Medium cumulative impact	The impact would result in minor cumulative effects.
4	High cumulative impact	The impact would result in significant cumulative effects
<b>SIGNIFICANCE</b>		
<p>Significance is determined through a synthesis of impact characteristics. Significance is an indication of the importance of the impact in terms of both physical extent and time scale, and therefore indicates the level of mitigation required. The calculation of the significance of an impact uses the following formula: (Extent + probability + reversibility + irreplaceability + duration + cumulative effect) x magnitude/intensity.</p> <p>The summation of the different criteria will produce a non-weighted value. By multiplying this value with the magnitude/intensity, the resultant value acquires a weighted characteristic which can be measured and assigned a significance rating.</p>		
Points	Impact significance rating	Description
6 to 28	Negative low impact	The anticipated impact will have negligible negative effects and will require little to no mitigation.
6 to 28	Positive low impact	The anticipated impact will have minor positive effects.
29 to 50	Negative medium impact	The anticipated impact will have moderate negative effects and will require moderate mitigation measures.
29 to 50	Positive medium impact	The anticipated impact will have moderate positive effects.
51 to 73	Negative high impact	The anticipated impact will have significant effects and will require significant mitigation measures to achieve an acceptable level of impact.
51 to 73	Positive high impact	The anticipated impact will have significant positive effects.
74 to 96	Negative very high impact	The anticipated impact will have highly significant effects and are unlikely to be able to be mitigated

		adequately. These impacts could be considered "fatal flaws".
74 to 96	Positive very high impact	The anticipated impact will have highly significant positive effects.

## 8.6 CONSULTATION WITH THE COMPETENT AUTHORITY

Consultation with the competent and commenting authorities will continue throughout the duration of impact assessment phase. The authorities will also comment on whether they deem it necessary to conduct additional specialist studies other than what is proposed already in this PoSEIA. On-going consultation will include:

- Submission of the Final EIR following a 30-day public review period (and consideration of comments received).
- Arrangements will be made to discuss the report with the Environmental Officer responsible for the project during the review period.

## 9 CONCLUSION

---

This Final Scoping Report is aimed at identifying the 'scope' of the EIA that will be conducted in respect of the activity for which authorisation is being applied for. It can be concluded that:

- The scoping phase complied with the specifications set out in Regulations 21 and Appendix 2 of GNR982.
- All key consultees have been consulted as required by the Regulations 39 to 44.

Based on the contents of the report the following key environmental issues were identified which need to be addressed in the EIA report:

- Impacts during construction phase:
  - Impacts on the fauna and flora
  - Impacts on soil
  - Impacts associated with the geology of the site
  - Impacts on existing services infrastructure
  - Temporary employment and other economic benefits
  - Impacts on heritage resources
- Impacts during the operational phase:
  - Impacts on the fauna and flora
  - Impacts associated with the soil
  - Impacts associated with the geology of the site
  - Increased consumption of water (3880m<sup>3</sup> per annum)
  - Increase in employment and other economic benefits
  - Visual impacts
  - Generation of income to the Local Community
  - Pressure on existing services infrastructure and water sources.
  - Impacts on heritage resources
  - Additional electricity generation
- Impacts during the decommissioning phase:
  - Loss of permanent employment & the creation of temporary employment

- Impacts on surface water features and soil erosion (non-perennial wetland)
  - Impacts on heritage resources
- Cumulative biophysical impacts resulting from similar development in close proximity to the proposed activity.

The latter issues will be addressed in more detail in the EIA report. The EAP thus recommended that:

The scoping report be approved after which the EIA process, as required by Regulations 23 to 24 may commence.

We trust that the department find the report in order and eagerly await your final decision in this regard.

**Ms. Marelle Griesel**

Environamics Environmental Consultants

## 10 REFERENCES

---

ANON. nd. Guidelines for Environmental Impact Assessments.  
<http://redlist.sanbi.org/eiaguidelines.php>

ACTS *see* SOUTH AFRICA

BODEN, T.A., G. MARLAND, and R.J. ANDRES. 2011. Global, Regional, and National Fossil-Fuel CO<sub>2</sub> Emissions. Carbon Dioxide Information Analysis Center, Oak Ridge National Laboratory, U.S. Department of Energy, Oak Ridge, Tenn., U.S.A.

BOTHA, A. J. 2016. The proposed Kagiso Solar Power Plant near Hotazel, Northern Cape Province. Visual Impact Assessment.

CONSTITUTION *see* SOUTH AFRICA. 1996.

DEPARTMENT OF ENERGY (DoE). Integrated Resource Plan 2010-2030

DEPARTMENT OF ENERGY (DoE). 2015-2020. Strategic Plan.

DEPARTMENT OF ENVIRONMENTAL AFFAIRS. 2014. Strategic Environmental Assessment (SEA) for wind and solar energy in South Africa.

DEPARTMENT OF MINERALS AND ENERGY (DME). 2010-2013. Integrated Resource Plan for South Africa.

DEPARTMENT OF MINERALS AND ENERGY (DME). 2003. White Paper on Renewable Energy.

ENERGY BLOG. 2015. Energy Blog – Project Database. [Web:]  
<http://www.energy.org.za/knowledge-tools/project-database?search=projectlookup&task=search> [Date of assess: 28 September 2015].

FIRST SOLAR. 2011. PV Technology comparison.

GOTZE A. R. 2016. Faunal and Floral Habitat Diversity Assessment for Kagiso Solar Power Plant (Pty) Ltd. Near Hotazel on the Remaining Extent of the farm Kameel Aar No. 315, Registration Division Kuruman, Northern Cape Province.

INTERNATIONAL FINANCE CORPORATION (IFC). 2012. International Finance Corporation's Policy on Environmental and Social Sustainability.

IFC & WORLD BANK GROUP. 2007. Environmental, Health, and Safety General Guidelines.

- JOE MOROLONG LOCAL MUNICIPALITY. 201-2016. Integrated Development Plan (IDP).
- JOHN TAOLO GAETSEWE DISTRICT MUNICIPALITY. 2012-2019. Integrated Development Plan (IDP)
- KRUGER L. 2016. Social Impact Assessment for Kagiso Solar (RF) (Pty) Ltd. Energy Facility Northern Cape Province.
- LANZ, J. 2016. Agricultural and Soils Impact Assessment for Proposed Kagiso Solar Power Plant near Hotazel Northern Cape Province. EIA Phase Report.
- MUCINA, L. AND RUTHERFORD, M.C. 2006. The vegetation of South Africa, Lesotho and Swaziland. *Strelitzia* 19. South African National Biodiversity Institute, Pretoria.
- NATIONAL DEPARTMENT OF AGRICULTURE. 2006. Development and Application of a Land Capability Classification System for South Africa.
- NC PROVINCIAL GOVERNMENT. 2012. Northern Cape Provincial Development and Resource Management Plan. Pretoria: Government Printer.
- NERSA. 2009. South Africa Renewable Energy Feed-in Tariff (REFIT) – Regulatory Guidelines.
- RUSSOUW. L. 2016. Phase 1 Palaeontological Assessment of the proposed Kagiso solar power plant (SPP) facility on the Remaining Extent of the farm Kameel Aar 315, near Hotazel, Northern Cape Province.
- SANBI. 2016. Guidelines for Environmental Impact Assessments. [Web:] <http://redlist.sanbi.org/eiaguidelines.php>. Date of access: 26 April 2016.
- SIMMONS, R. 2016. Pre-construction Avian Impact Assessment of the Kagiso Solar Power Plant (RF) (Pty) Ltd., near Hotazel, Northern Cape.
- SOLARGIS. 2011. Global Horizontal Irradiation (GHI). [Web:] <http://solargis.info/doc/71> [Date of access: 7 May 2014].
- SOUTH AFRICA(a). 1998. The Conservation of Agricultural Resources Act, No. 85 of 1983. Pretoria: Government Printer.
- SOUTH AFRICA. 1996. Constitution of the Republic of South Africa as adopted by the Constitutional Assembly on 8 May 1996 and as amended on 11 October 1996. (B34B-96.) (ISBN: 0-260-20716-7.)
- SOUTH AFRICA(a). 1998. The National Environmental Management Act, No. 107 of 1998. Pretoria: Government Printer.

SOUTH AFRICA(b). 1998. The National Water Act, No. 36 of 1998. Pretoria: Government Printer.

SOUTH AFRICA. 1999. The National Heritage Resources Act, No. 25 of 1999. Pretoria: Government Printer.

SOUTH AFRICA. 2004. The National Environment Management: Air Quality Act, No. 39 of 2004. Pretoria: Government Printer.

SOUTH AFRICA(a). 2008. The National Energy Act, No. 34 of 2008. Pretoria: Government Printer.

SOUTH AFRICA(b). 2008. The National Environmental Management: Waste Act, No. 59 of 2008. Pretoria: Government Printer.

SOUTH AFRICA. 2010. Regulations in terms of Chapter 5 of the National Environmental Management Act, 1998. (GNR. 543, 544 and 545. 2010.). Pretoria: Government Printer.

SOUTH AFRICA. Minister in the Presidency: Planning (2009). *Medium Term Strategic Framework. – A Framework to guide Governments Programme in the Electoral Mandate Period 2009-2014.*

SWINGLER, S. 2006. Statistics on Underground Cable in Transmission networks, Final Report of CIGRE Working Group B1.07.

THE MESOTHELIOMA CENTRE. 2016. Mesothelioma in South Africa. [Web:] <http://www.asbestos.com/mesothelioma/south-africa/>. [Date of access: 27 June 2016].

VAN SCHALKWYK, J. 2016. Cultural Heritage Impact Assessment for the Development of the Proposed Kagiso Solar Power Plant on the Remaining Extent of the farm Kameel Aar 315, Registration Division Kuruman, Northern Cape Province.

WORLD BANK GROUP. 2006. The Equator Principles.