







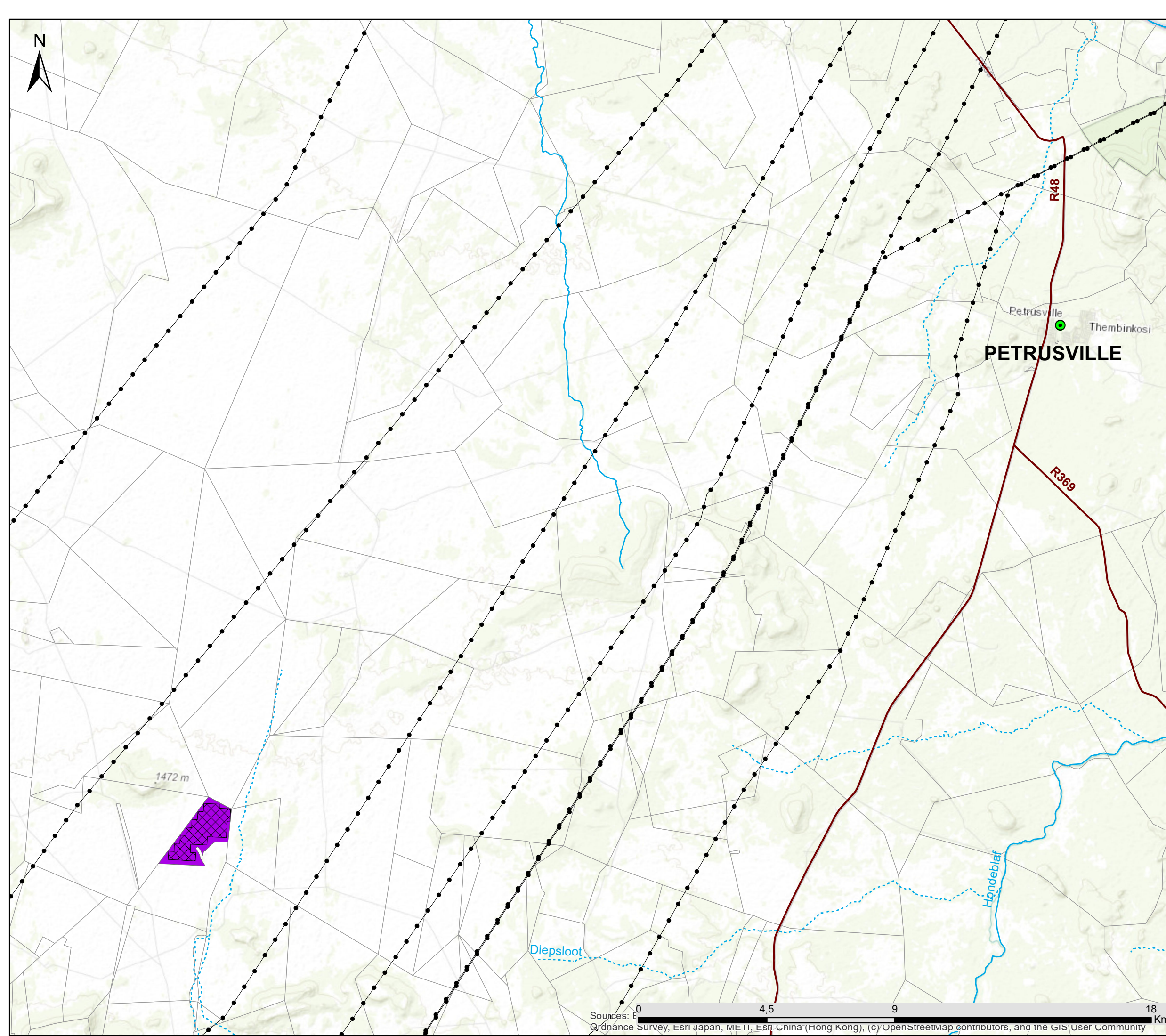


Koppy Alleen Solar PV Facility Crossroads Green Energy Cluster Northern Cape Province

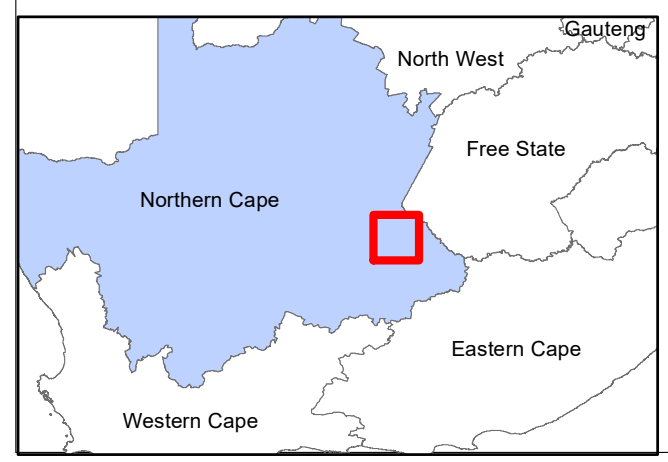
Locality Map

Legend

-  Town
-  Existing Power Line
-  Regional Road
-  Non-perennial River
-  Perennial River
- Proposed Development**
-  Koppy Alleen Solar PV Facility Development Area
-  Koppy Alleen Solar PV Facility Development Footprint
-  Farm Portions



Scale: 125 000
Projection: GCS_WGS_1984
Map Ref: Crossroads Green Energy Cluster



Sources: Ordnance Survey, Esri Japan, MEI, Esri China (Hong Kong), (c) OpenStreetmap contributors, and the GIS User Community

Crossroads Green Energy Cluster Northern Cape Province

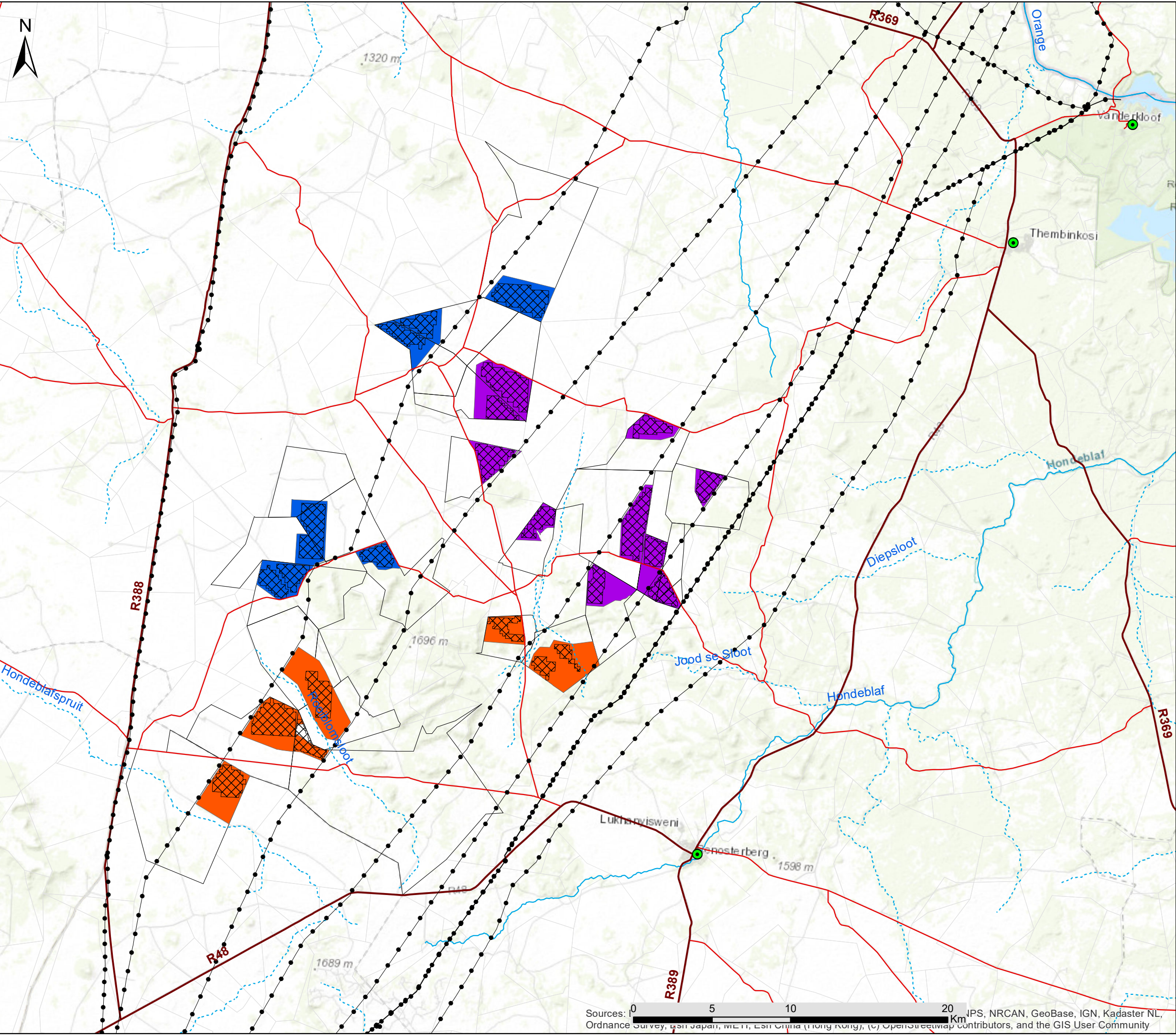
Locality Map

Legend

-  Town
-  Eskom Substation
-  Existing Power Line
-  National Road
-  Regional Road
-  Main Road
-  Non-perennial River
-  Perennial River
-  Phase 1 Solar Facilities
-  Phase 2 Solar Facilities
-  Phase 3 Solar Facilities
-  Affected Farm Portion



Scale: 230 000
 Projection: GCS_WGS_1984
 Map Ref: Hydra B Renewable Energy Cluster




















Sources: 0 5 10 20 km
 IPS, NRCAN, GeoBase, IGN, Kadaster NL, Ordnance Survey, Esri Japan, METI, Esri China (Hong Kong), (c) OpenStreetMap contributors, and the GIS User Community

Crossroads Green Energy Koppy Alleen Solar PV Facility Northern Cape Province

Layout Map

Legend

-  Main Road
-  Non-perennial River
-  Perennial River
- Facility Layout**
-  Internal Roads
-  Power Stations
-  Project Site
-  Facility Fenceline
-  Fire Break (50m)
-  Development Area
-  Development Footprint
-  Solar PV Arrays
-  On-Site Substation
-  Office and Storage
-  Laydown Area
-  Parking Area
-  BESS
-  Affected Property

KOPPY ALLEEN
5/83

Scale: 18 000
Projection: WGS_GCS_1984
Map Ref: Crossroad Green Energy Cluster Koppy Alleen

savannah
environmental



0 0,5 1 2 Km

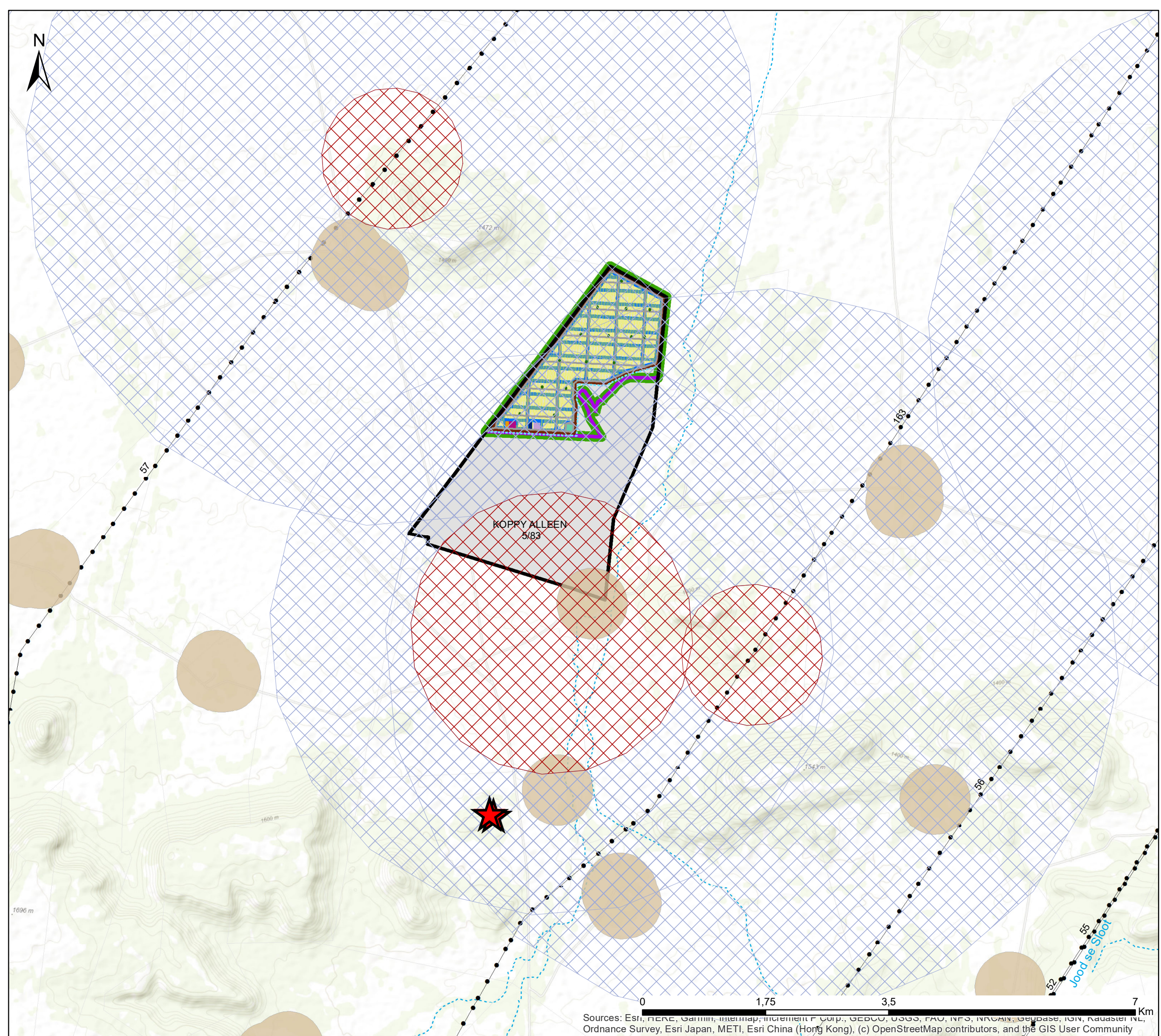
Crossroads Green Energy Koppy Alleen Solar PV Facility Northern Cape Province

Layout & Sensitivity Map

Legend

- Transmission Lines
- Non-perennial River
- Perennial River
- Internal Roads
- Power Stations
- ▭ Project Site
- Facility Fenceline
- Fire Break (50m)
- ▭ Development Area
- ▭ Development Footprint
- Solar PV Arrays
- On-Site Substation
- Office and Storage
- Laydown Area
- Parking Area
- BESS
- Affected Property
- Terrestrial Ecology Sensitivities**
- Karoo Grassland - Medium Sensitivity
- Heritage Sensitivities**
- ★ Heritage Resources - Moderate Sensitivity
- Avifauna Sensitivities**
- ▨ Nest buffers 2km - No Go areas
- ▨ Nest buffers - Low Sensitivity
- Visual Sensitivities**
- Residences - Moderate Sensitivity

Scale: 50 000
 Projection: WGS_GCS_1984
 Map Ref: Crossroad Green Energy Cluster Koppy Alleen



0 1,75 3,5 7 Km
 Sources: Esri, HERE, Garmin, Intelmap, increment P Corp., GEBCO, USGS, FAO, NPS, NRCAN, Geobase, IGN, Radaster NL, Ordnance Survey, Esri Japan, METI, Esri China (Hong Kong), (c) OpenStreetMap contributors, and the GIS User Community

Crossroads Green Energy Solar PV Facilities Cluster Northern Cape Province

Layout & Sensitivity Map

Legend

- Transmission Lines
 - Distribution Lines
 - Regional Road
 - Non-perennial River
 - Perennial River
- Proposed Cluster Development**
- Project Sites
 - Tafelkop Solar PV
 - Koppy Alleen Solar PV
 - Vrede Solar PV
 - Zionsheuvel Solar PV
 - Amper Daar Solar PV
 - Wag n Bietjie Solar PV
 - Ruspoort 1 - Option A Solar PV
 - Ruspoort 1 - Option B Solar PV
 - Ruspoort 2 Solar PV
 - Middelplaas Solar PV
- Avifauna Sensitivities**
- Nest buffers 2km - No Go areas
 - Nest buffers - Low Sensitivity
- Visual Sensitivities**
- Residences - Moderate Sensitivity
- Heritage Sensitivities**
- Heritage 100m Buffer
 - Heritage Resources - Moderate Sensitivity
 - No-go Areas
- Terrestrial Ecology Sensitivities**
- Karoo Grassland - Medium Sensitivity
 - Drainage features - Medium Sensitivity
 - Koppies Shrubland - High Sensitivity

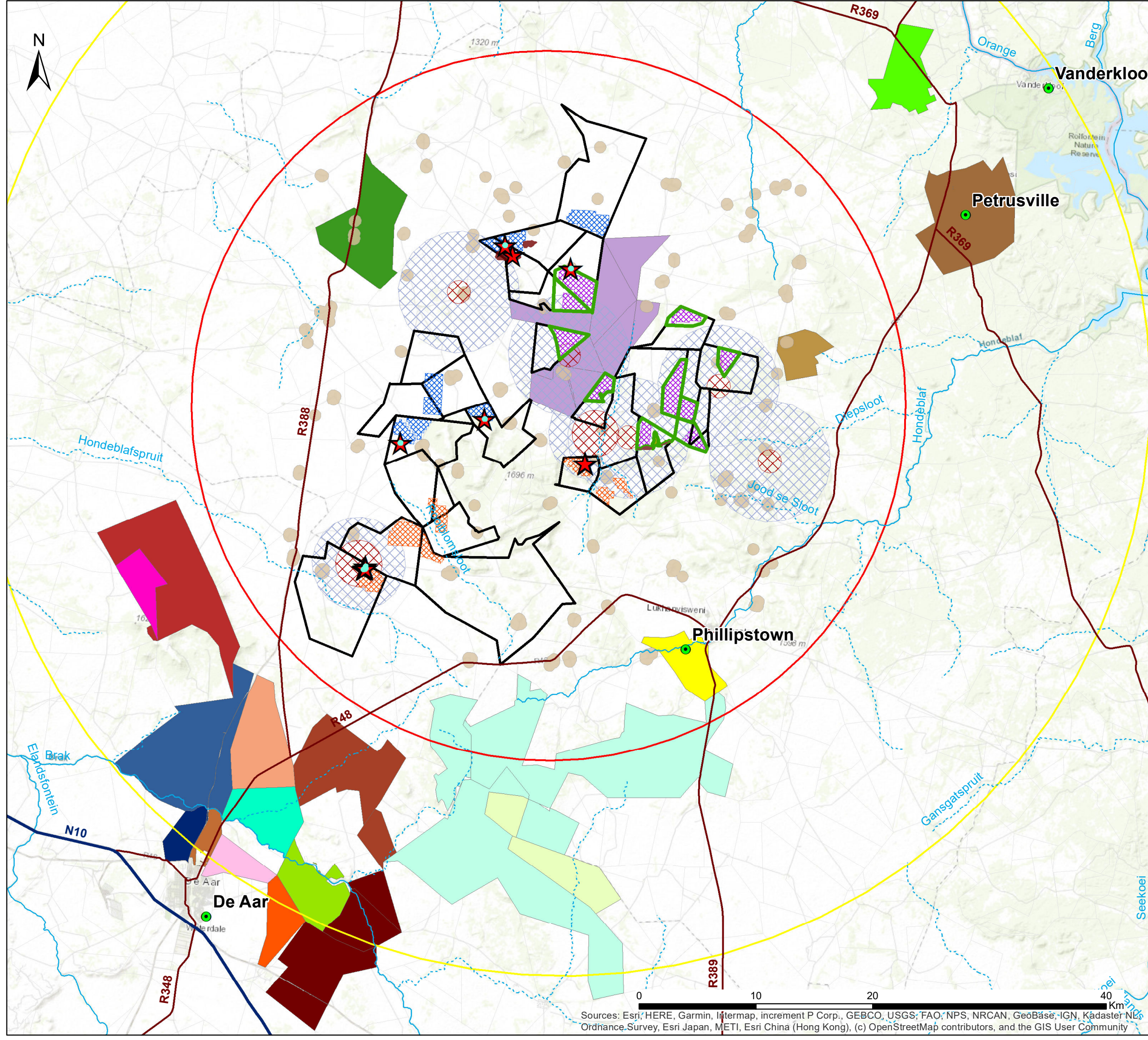


Scale: 100 000
 Projection: WGS_GCS_1984
 Map Ref: Crossroad Green Energy Cluster



Crossroads Green Energy Solar PV Facilities Cluster Northern Cape Province

Layout, Sensitivity & Cumulative Map



- Legend**
- Town
 - National Road
 - Regional Road
 - Non-perennial River
 - Perennial River
 - 30 km radius
 - 50 km radius
- Proposed Cluster Development**
- Phase 1 Solar Facilities
 - Phase 2 Solar Facilities
 - Phase 3 Solar Facilities
 - Project Sites
- Avifauna Sensitivities**
- Nest buffers 2km - No Go areas
 - Nest buffers - Low Sensitivity
- Visual Sensitivities**
- Residences - Moderate Sensitivity
- Heritage Sensitivities**
- Heritage 100m Buffer
 - Heritage Resources - Moderate Sensitivity
- No-go Areas**
- No-go Areas
- Terrestrial Ecology Sensitivities**
- Karoo Grassland - Medium Sensitivity
 - Drainage features - Medium Sensitivity
 - Koppies Shrubland - High Sensitivity
- Other Renewable Energy Developments (REEA 2022 Q1)**
- 300MW Solar Power Plant in Phillipstown (Approved)
 - 70 - 100 MW Solar Power Plant in Petrusville (In Progress)
 - Castle wind energy facility project (Approved)
 - Proposed PV facility on farm Blaauwkratz near De Aar (In Process)
 - PV facility on farm Caroluspoort near De Aar (Approved)
 - PV facility on farm Jakhalsfontein near De Aar (Approved)
 - Solar Capital PV facility on farm Loskop (Operational)
 - Renosterberg PV power plant (Approved)
 - Solar Power Generation Facility on the farm Vetlaagte 4 (Approved)
 - Swartwater 75MW solar PV power facility (Approved)
 - Ilanga Lethemba 2 Solar PV Facility (Approved)
 - PV facility on farm Blaauwkratz near De Aar (In Process)
 - Renosterberg Wind Energy Facility (Approved)
 - The Mulilo De Aar 2 South (Pty) Ltd Wind Energy Facility (Operational)
 - 75MW PV SEF on the Remaining Extent of the Farm Vetlaagte 4 (Approved)
 - Scalec Solar Photovoltaic Farms (Approved)
 - Kudu Solar PV Facilities (In Progress)

Scale: 300 000
 Projection: WGS_GCS_1984
 Map Ref: Crossroad Green Energy Cluster



Sources: Esri, HERE, Garmin, Intermap, increment P Corp., GEBCO, USGS, FAO, NPS, NRCAN, GeoBase, IGN, Kadaster NL, Ordnance Survey, Esri Japan, METI, Esri China (Hong Kong), (c) OpenStreetMap contributors, and the GIS User Community