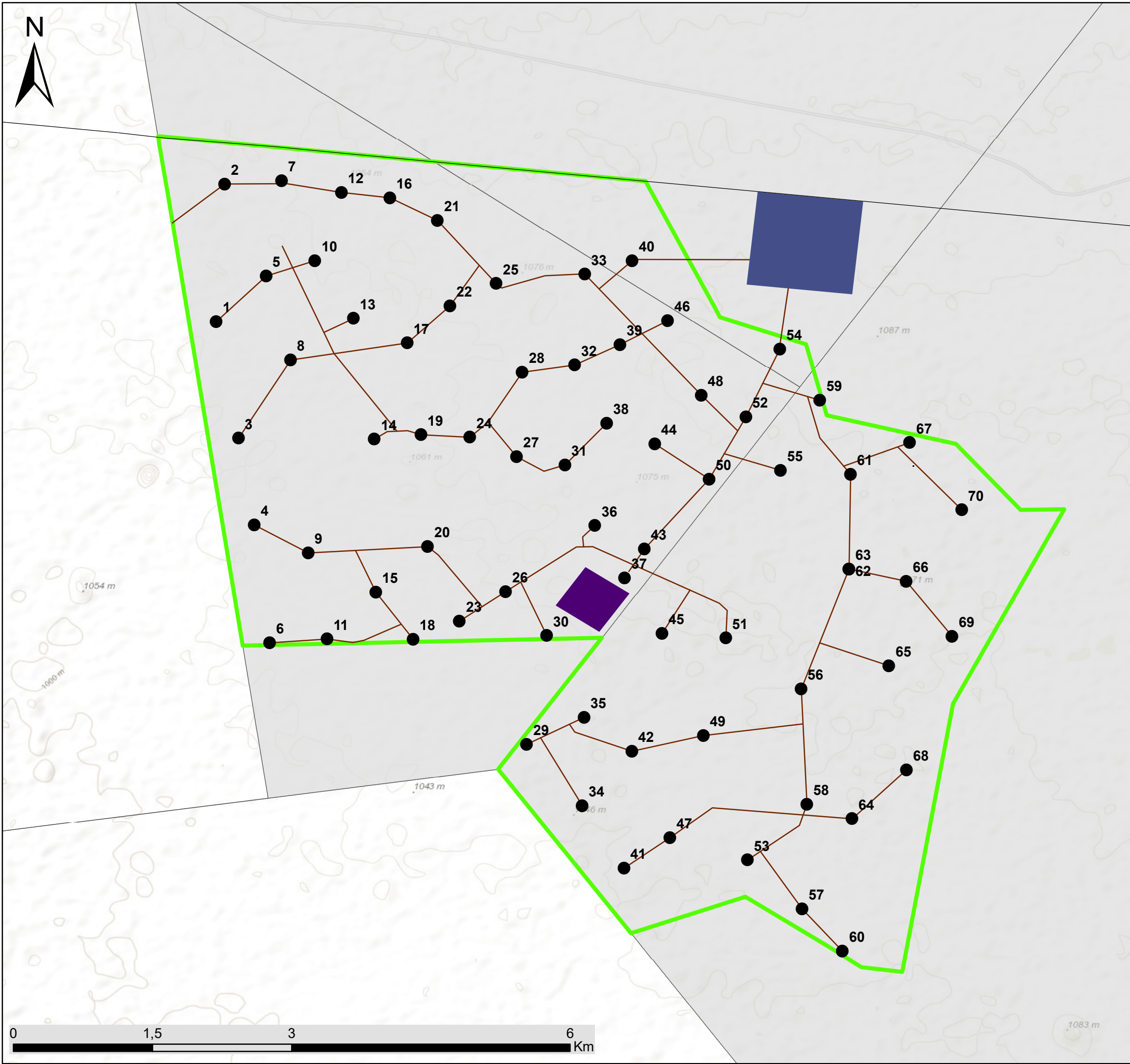




Korana Wind Energy Facility, Northern Cape Province

Layout Map

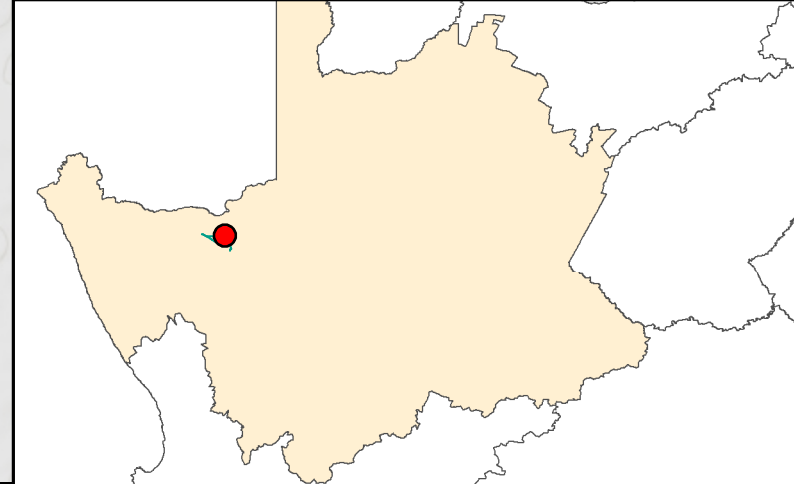


Legend

- Turbines
- Existing Eskom Powerline
- Internal Access Roads and Cables
- Eskom Substation
- Substation, O&M, Laydown area
- ▭ Development Area
- ▭ Affected Farm Portions
- ▭ Farm Portions



Scale: 1:48 000
Projection: LO19
Map ref: Korana WEF Layou Map_02.09.19



Korana Wind Energy Facility, Northern Cape Province

Avifaunal Sensitivity Map

Legend

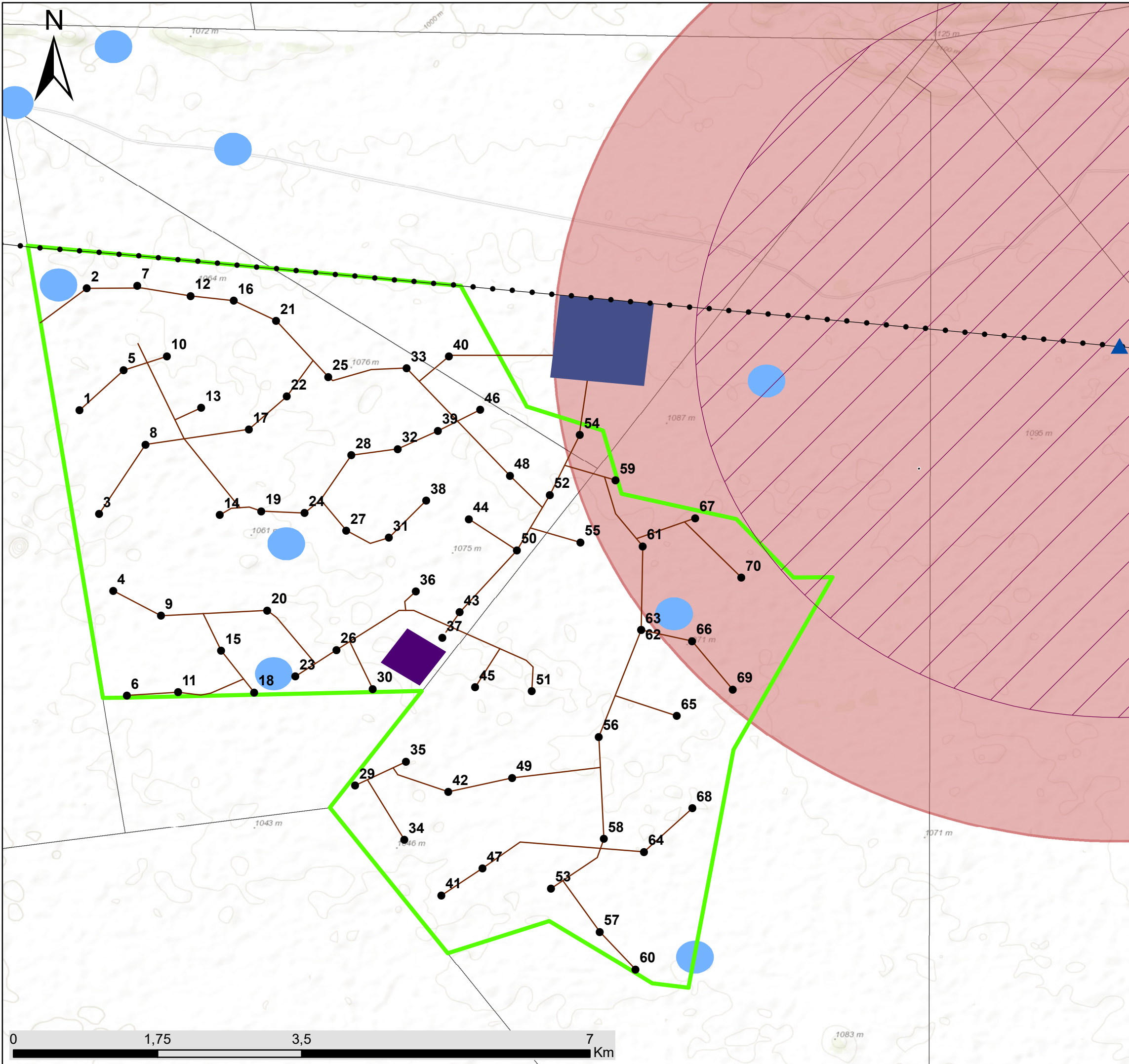
- Turbines
- Existing Eskom Powerline
- Internal Access Roads and Cables
- Eskom Substation
- Development Area
- Substation, O&M, Laydown area
- Farm Portions

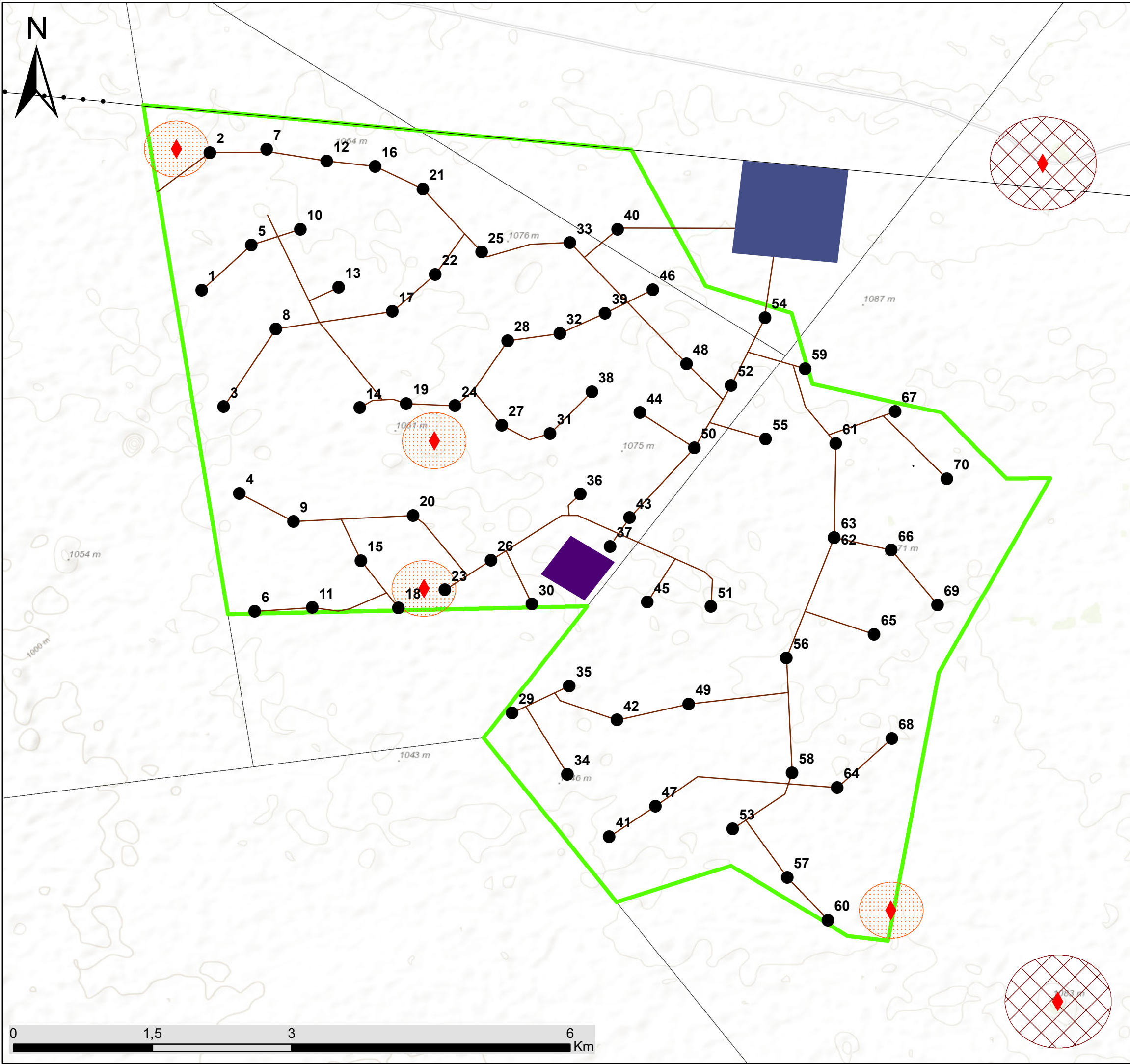
Avifaunal Sensitivities

- ▲ Martial Eagle Nest on Tower 147
- Martial Eagle Nest: 4,5km Buffer
- Water points: 200m Buffer
- Martial Eagle Nest 6km Buffer

savannah
environmental

Scale: 1:48 000
Projection: LO19
Map ref: Korana WEF Avifaunal_03.09.19





Korana Wind Energy Facility, Northern Cape Province

Bat Sensitivity Map

Legend

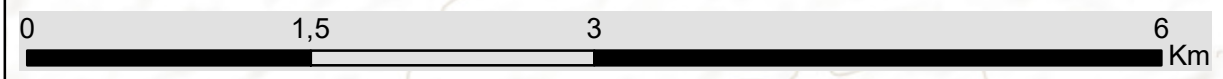
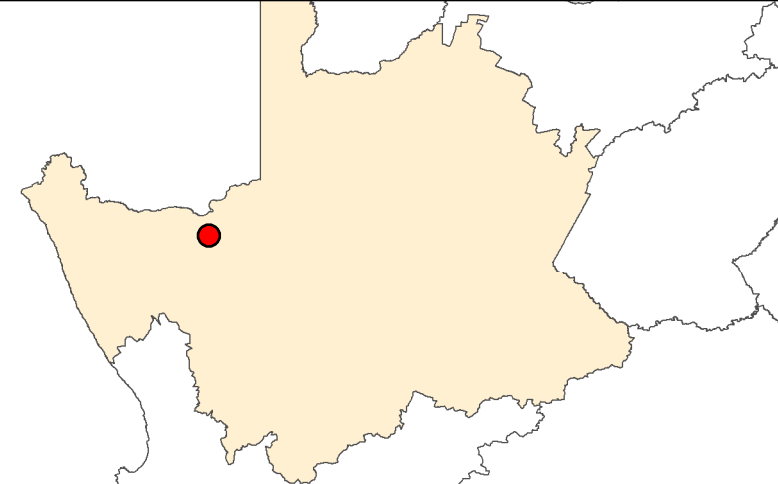
- Turbines
- Existing Eskom Powerline
- Internal Access Roads and Cables
- Eskom Substation
- Substation, O&M, Laydown area
- ▭ Development Area
- ▭ Farm Portions

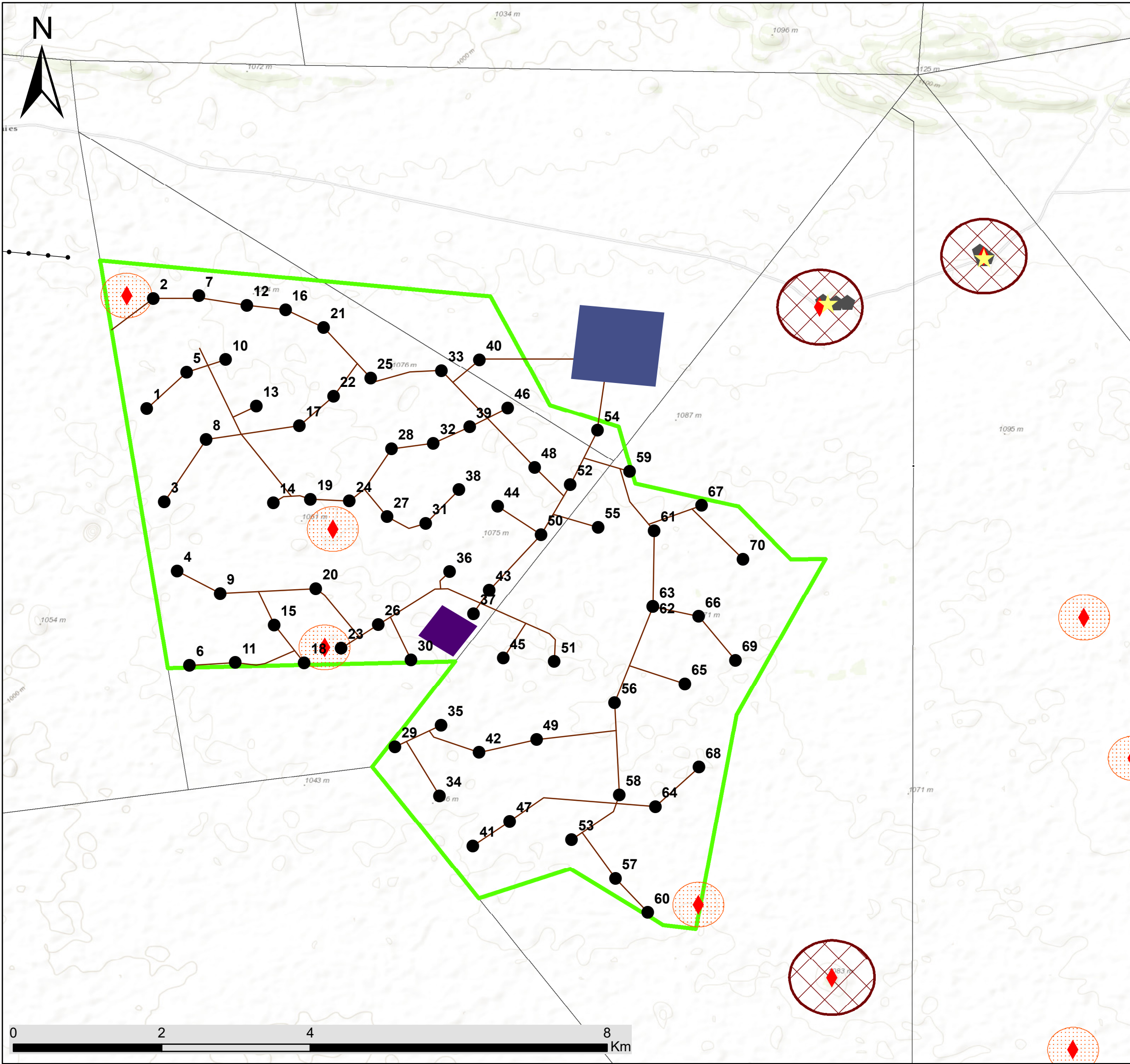
Bat Sensitivities

- ◆ Potential Bat Roosts
- ▭ 300 m Roost Buffer
- ▭ 500 m Roost Buffer



Scale: 1:48 000
 Projection: LO19
 Map ref: Korana WEF Bats Map_02.09.19





Korana Wind Energy Facility, Northern Cape Province

Sensitivity and Layout Map

Legend

- Turbines
- Existing Eskom Powerline
- Eskom Substation
- Internal Access Roads and Cables
- Substation, O&M, Laydown area
- ▭ Development Area
- ▭ Farm Portions

Environmental Sensitivities

- ★ NSD
- ⬢ Recidences (Visual Receptors)
- ▲ Martial Eagle Nest on Tower 147
- ◆ Potential Bat Roosts
- ▨ 300 m Roost Buffer
- ▩ 500 m Roost Buffer
- ▭ Martial Eagle Nest: 4,5km buffer
- ▭ Martial Eagle Nest 6km Buffer
- ▭ Water Points 200m Buffer



Scale: 1:48 000
 Projection: LO19
 Map ref: Korana WEF Bats Map_02.09.19

