

Kya Sand Ext 104

Industrial Township

NE



KRIGE FALCONER PARTNERSHIP ARCHITECTS

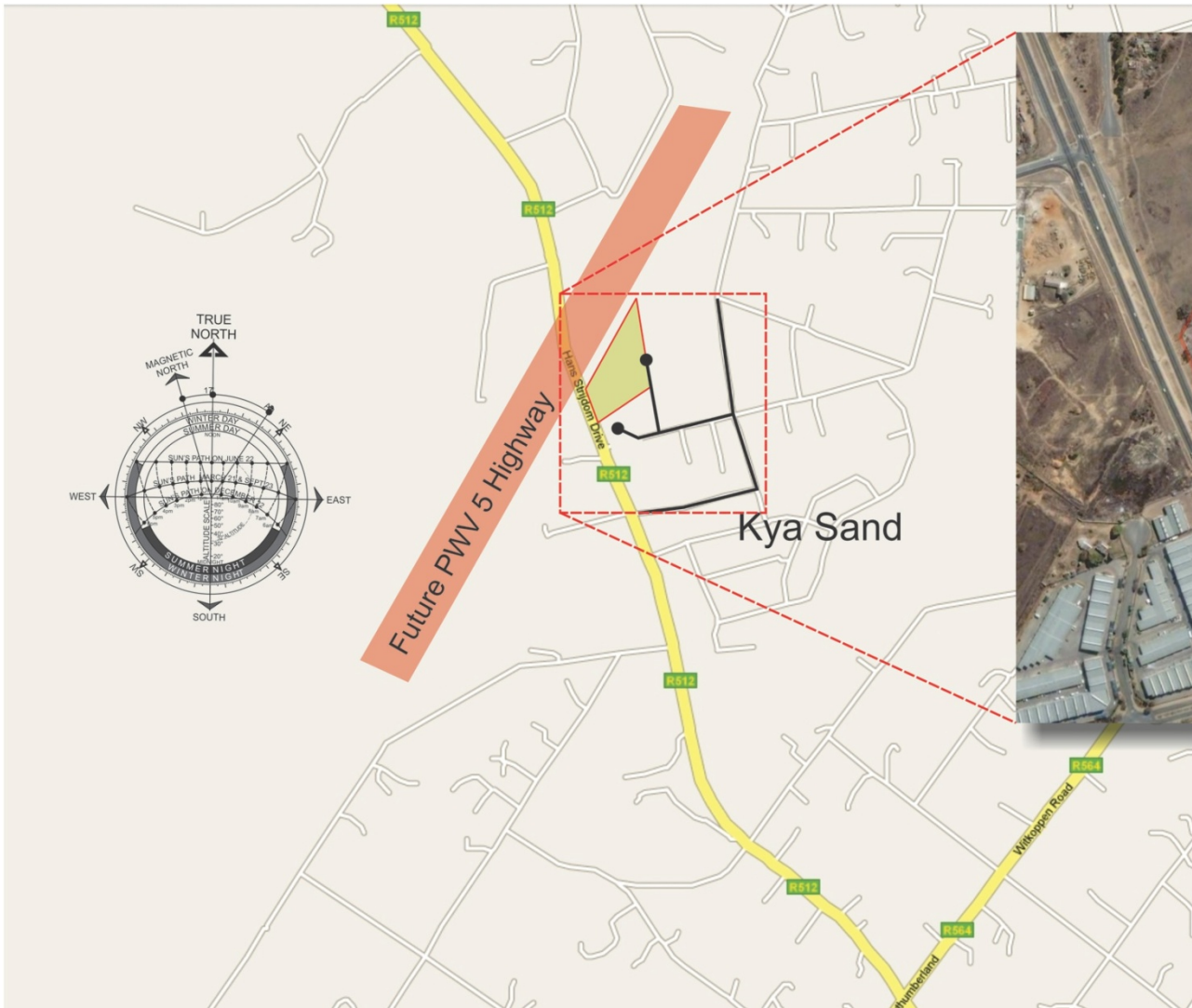


Contents

- Site Locality
- Development Plans
- Townplanning Application
- Environmental Research
- Environmental Application

The Site

- Locality
- Roads and Accessibility
- “Island Site”
- Township Layout
- Development Plans
- Stormwater Management



Location Plan



Kya Sand

Future PWV 5 Highway

Hans Strijdom (Malibongwe)

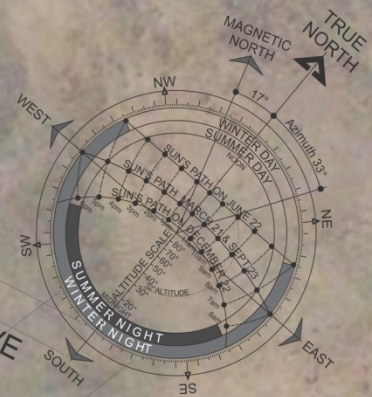
Cosmo City



LAYOUT PLAN - NTS



Permeable Paving on all parking bays



Stormwater & erosion protection to allow for future run-off from PWV5

AERIAL VIEW



**VARIOUS DETAIL VIEWS OF INTEGRATED LANDSCAPING
& STORMWATER MEASURES**



PLANT LIST

Juncus lomatophyllus
(Rush)



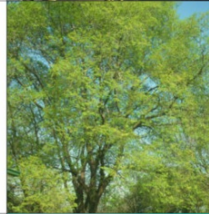
Freylinia visserii
(Wine Honeybells)



Acacia xanthophloea
(Fever Tree)



Celtis africana
(White Stinkwood)



Combretum erythrophyllum
(River Bushwillow)



Zantedeschia aethiopica
(Arum lily)



Dovyalis caffra
(Kei apple)



Dietes grandiflora
(Wild Iris)



Carissa macrocarpa
(Natal plum)



Elegia Tectorum
(Cape thatch reed)



Town Planning

- Application approved
- Final Conditions of Establishment received
- Subject to:
 - Environmental authorisation
 - Power (available and application in progress)




Town Planning Reports

- Engineering
 - Services Report
 - Traffic Impact Analysis
 - Geotechnical

Environmental Research

- Mammal Study
 - No endangered or significant species
- Geohydrologist
 - Very comprehensive report, including particle tracking, chemical analysis and interpretation of aerial photographs from 1938 to 2007
- SocioEconomic Report
 - Possible economic impacts
- Aerial Photographs
 - From 1938 to date
- Wetland Study
 - Focus on identification of current status, little or no comment on significance, sustainability or importance of wetland



-  Site
-  Wetland
-  30 m buffer

