

**CONCRETE NOTES**

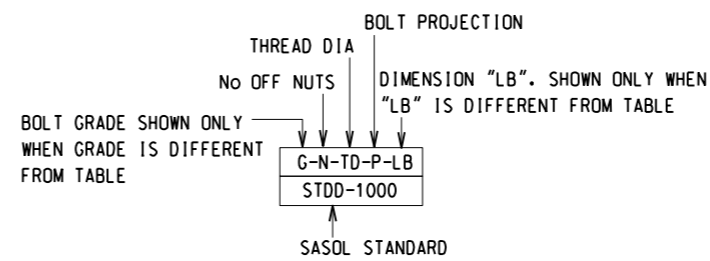
- FOR NOTES REFER TO SASOL STANDARD DRAWING STDD-1003
- CONCRETE GRADE:  
STRUCTURAL CONCRETE = 30MPa / 19mm STONE  
50 mm BLINDING LAYER = 10MPa  
MASS CONCRETE = 7MPa
- DIMENSIONS, ELEVATIONS AND COORDINATES INDICATED BY "REF" SHALL BE VERIFIED ON SITE. DO NOT START CONSTRUCTION BEFORE THIS IS DONE. NOTIFY THE DESIGN ENGINEER OF ANY DEVIATIONS BEFORE START OF CONSTRUCTION.

**DRAWING CALLOUT NOTES**

- DETAIL - TYPICAL CALLOUT LEGEND:



- HD BOLT DETAIL - TYPICAL CALLOUT LEGEND:



**STEEL GENERAL NOTES**

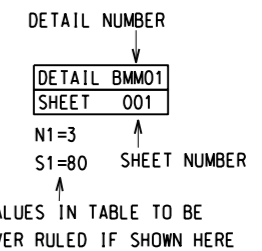
- FOR NOTES REFER TO SASOL STANDARD DRAWING STDD-2012
- ALL STRUCTURAL STEEL TO BE GRADE S355JR TO EN 10025
- DIMENSIONS, ELEVATIONS AND COORDINATES INDICATED BY "REF" SHALL BE VERIFIED ON SITE. DO NOT START FABRICATION OR SITE ERECTION BEFORE THIS IS DONE. NOTIFY THE DESIGN ENGINEER AND SHOP DETAILER OF ANY DEVIATIONS BEFORE START OF FABRICATION.
- PLUS OR MINUS (+/-) OR IN BRACKETS ( ) DIMENSIONS NEAR MEMBER DESCRIPTIONS ARE FROM THE REFERENCED TOP OF STEEL
- ALL GUSSET PLATES TO BE 10 mm U.O.S.
- ALL NOTCHES TO BE RADIUSED
- ALL WELDS TO BE MIN 6mm CFW. MIN E70XX ELECTRODE CLASSIFICATION U.O.S.
- ◄ INDICATES SITE WELD
- ALL BOLTS TO BE M20 CLASS 8.8 TO SANS 1700:2010 Ed 2 U.O.S. ALL NUTS TO BE MIN CLASS 8 TO SANS 1700:2010 Ed 2
- BOLTS FOR COLDFORMED GIRTS & PURLINS AND ANY SAG BARS SHALL BE M16 CLASS 8.8 TO SANS 1700:2010 Ed 2 U.O.S.
- MIN BOLT SPACINGS SHALL BE 70mm FOR M20 AND 60mm FOR M16. U.O.S.
- MIN EDGE DISTANCES SHALL BE 35mm FOR M20 AND 30mm FOR M16. U.O.S.
- ALL HOLE DIA TO BE BOLT DIA + 2 mm U.O.S
- SETTING OUT OF STRUCTURES TO BE RELATIVE FROM EXISTING STRUCTURES AND NOT FROM SURVEY BEACONS WHERE DIMENSIONS ARE INDICATED WITHOUT A "REF"

**DRAWING INDEX**

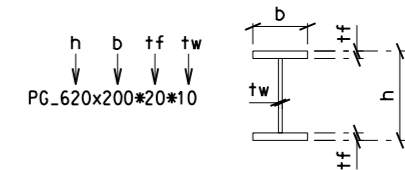
L18221-DW-0500-001	GENERAL LAYOUT AND DRAWING INDEX
L18221-DW-0500-002	SITE DEVELOPMENT PLAN
L18221-DW-0500-003	OFFICE AREA LAYOUT
L18221-DW-0500-004	ROAD SETTING OUT DATA
L18221-DW-0500-005	TYPICAL ROAD DETAIL
L18221-DW-1000-001	TRUCK PARKING - LAYOUT
L18221-DW-1000-002	TRUCK PARKING - SECTION AND DETAILS
L18221-DW-1001-001	SILO 1 - LAYOUT
L18221-DW-1001-002	SILO 1 - SECTION AND DETAILS
L18221-DW-1001-003	FOUNDATION REBAR - SECTION & DETAILS
L18221-DW-1001-004	SUMP 1 & SUMP 2 REBAR - SECTION & DETAILS
L18221-DW-1002-001	SILO 2 - LAYOUT
L18221-DW-1002-002	SILO 2 - SECTION AND DETAILS
L18221-DW-1002-003	FOUNDATION REBAR - SECTION & DETAILS
L18221-DW-1002-004	SILO 2 - REBAR - SECTION & DETAILS
L18221-DW-1002-004	SUMP 3 REBAR - SECTION & DETAILS
L18221-DW-1003-001	200 CASE MAGAZINE - LAYOUT
L18221-DW-1003-002	200 CASE MAGAZINE - SECTION AND DETAILS
L18221-DW-1003-003	200 CASE RETAINING WALL 1 - REBAR - SECTION & DETAILS
L18221-DW-1003-004	200 CASE RETAINING WALL 2 - REBAR - SECTION & DETAILS
L18221-DW-1004-001	300 CASE MAGAZINE - LAYOUT
L18221-DW-1004-002	300 CASE MAGAZINE - SECTION AND DETAILS
L18221-DW-1004-003	300 CASE RETAINING WALL 1 - REBAR - SECTION & DETAILS
L18221-DW-1004-004	300 CASE RETAINING WALL 2 - REBAR - SECTION & DETAILS
L18221-DW-1005-001	MISCELLANEOUS SLABS - SECTION AND DETAILS
L18221-DW-1006-001	2.4m FENCING DETAILS
L18221-DW-1006-002	CARPORTS AND WALKWAY ROOF - FOUNDATION PLAN
L18221-DW-1006-003	CARPORTS AND WALKWAY - FOUNDATION DETAILS
L18221-DW-1006-004	CARPORTS AND WALKWAY - PLAN
L18221-DW-1006-005	CARPORTS AND WALKWAY - SECTIONS
L18221-DW-1006-006	CARPORTS AND WALKWAY - CONNECTION DETAILS
L18221-DW-1006-007	SEPTIC TANK DETAILS
L18221-DW-1006-008	SLIDING GATE DETAIL
L18221-DW-1006-009	GATE DETAILS
L18221-DW-1006-010	SMOKING AREA - PLAN AND DETAILS

**STEEL CONNECTION NOTES**

- CONNECTION LEGEND IN GA DRAWINGS:



- PLATE GIRDER - TYPICAL CALLOUT LEGEND:



**SQUAD CHECK**

SEO	DISCIPLINE	NAME	PRINT	SIGNATURE	DATE
	PROCESS				
	MECHANICAL				
	PIPING				
	CIVIL				
	ELECTRICAL				
	C/SYSTEM PROJECTS				
	CLIENT				

REFERENCE DRAWINGS		
SASOL DRAWING NUMBER	VENDOR DRAWING NUMBER	DESCRIPTION
	L18221-DW-0500-002	SITE DEVELOPMENT PLAN

Copyright Sasol (Pty) Ltd, South Africa. ©All rights reserved.				PROJECT No.	WBS No.	<b>NAKO</b> LBE	www.nakogroup.com mail.lbe@nakogroup.com	CAD MODEL NO: .DGN	LBE JOB No. L18221
No.	REVISION DESCRIPTION	DRAWN	CHECKED	APPROVED	ENGINEER	DATE	DRAWN	DATE	UNIT/SECTION
01	APPROVED FOR CONSTRUCTION (NAKO LBE) (L18221)	P SMITH	H VENTER	P THORBURN	H VENTER	2018/07/26	P SMITH	2018/07/04	AREA
							H VENTER	2018/07/04	
							H VENTER	2018/07/04	
							H VENTER	2018/07/04	
							P THORBURN	2018/07/04	
DEPOT AT WEILAAGTE GENERAL LAYOUT, DRAWING INDEX AND NOTES								VENDOR DWG No.	L18221-DW-0500-001
								OLD DWG.No.	
PLEASE CHECK AND RETURN AS SOON AS POSSIBLE								SHEET No.	01
								REV. No.	
CAD No.:								DIMENSIONS IN mm UNLESS OTHERWISE STATED	
								SCALE:	DWG: A1 SIZE
								SAP/SASOL DWG. No.	