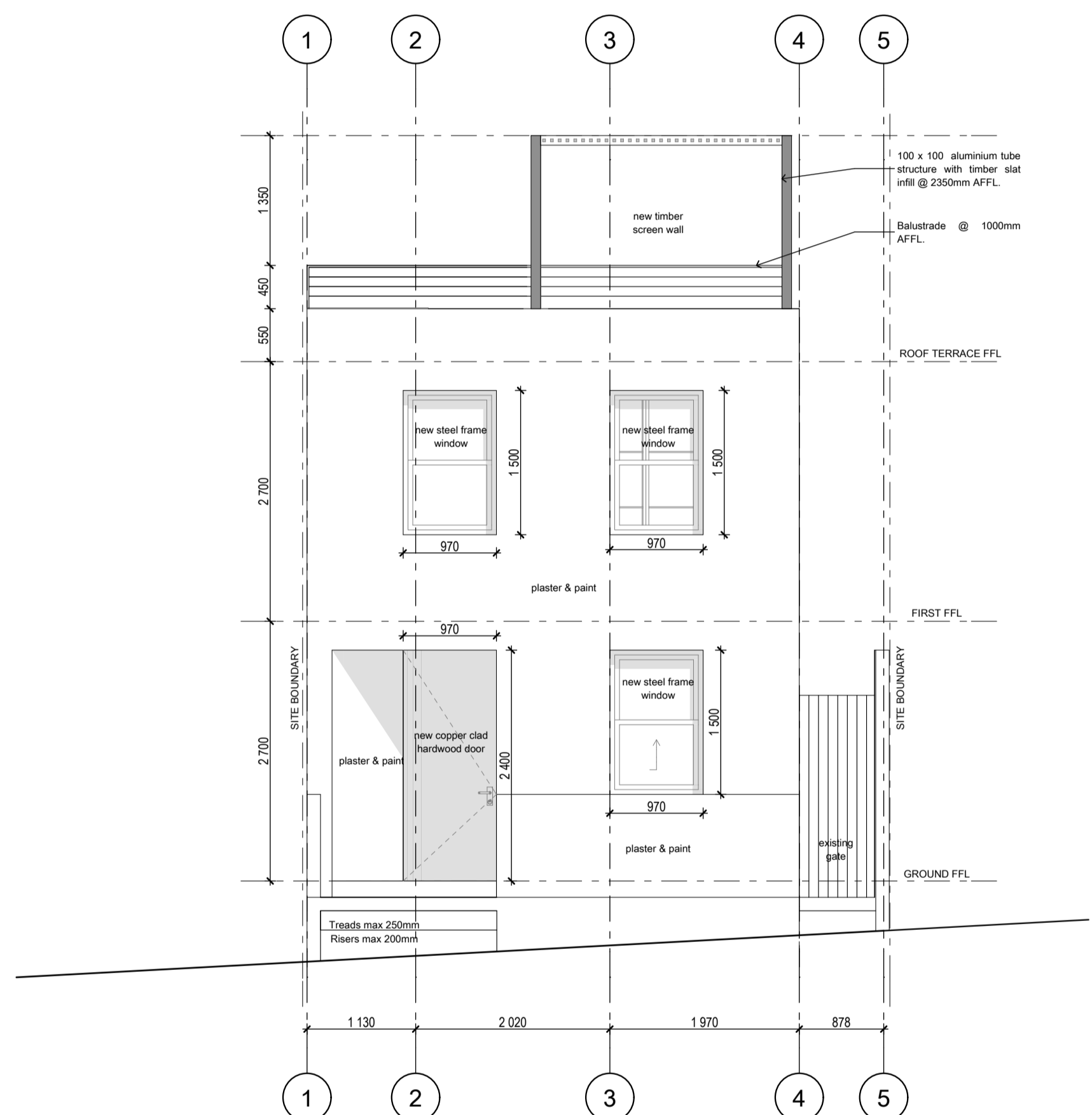


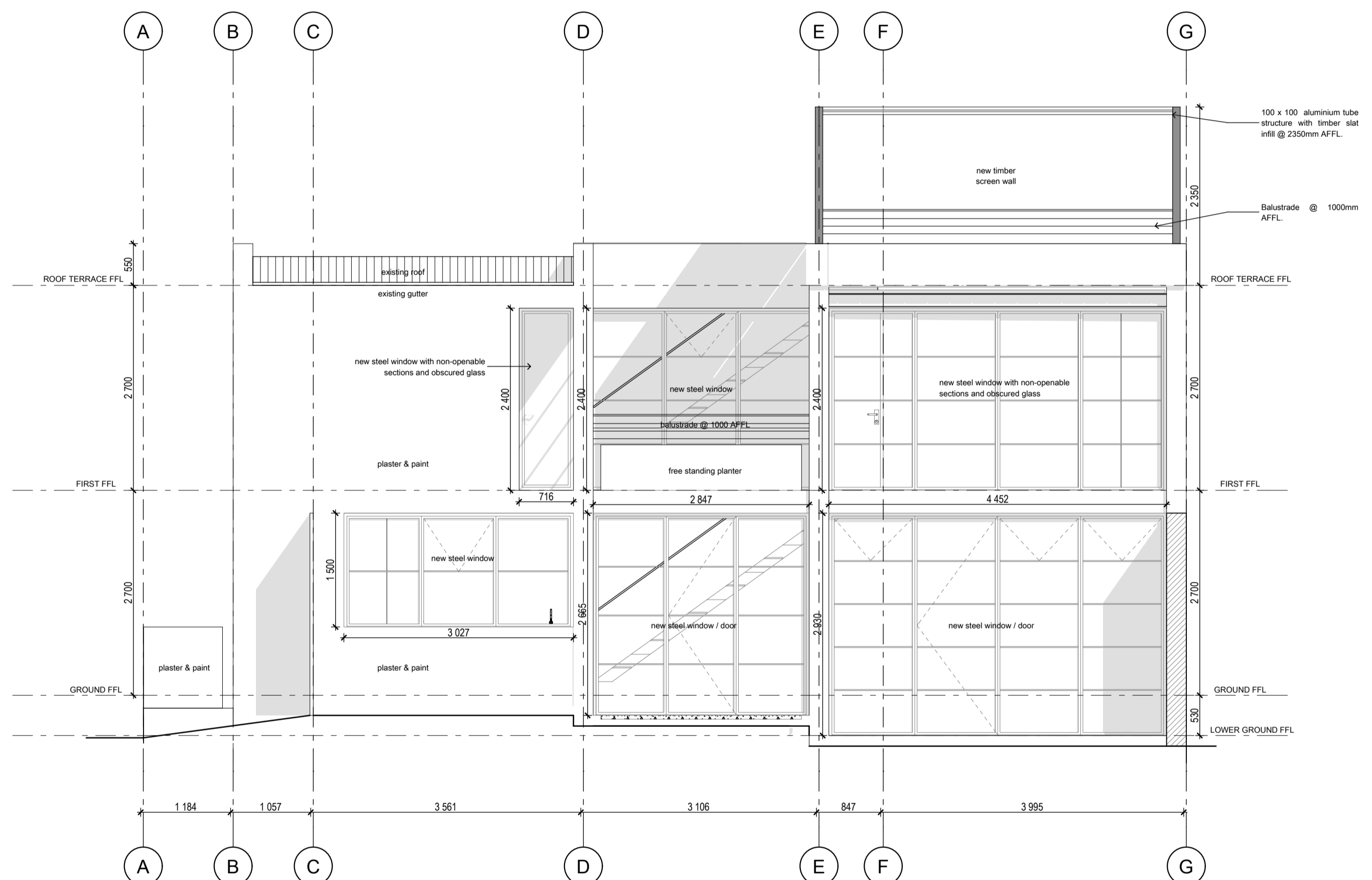
**GENERAL NOTES**  
 DIMENSIONS NOTED ON ARCHITECT'S DRAWINGS ARE FROM FINISHED SURFACES / MATERIALS AND NOT STRUCTURE, UNLESS OTHERWISE INDICATED  
 All relevant details, levels, dimensions, setting out positions are to be checked prior to any work commencing and any discrepancies are to be brought to the attention of the Architect.  
 The Architect accepts no responsibility for errors resulting from misinterpretation of the drawings.  
 All dimensions are given in millimetres unless otherwise noted.  
 Drawings are to read in conjunction with Engineer's drawings.  
 Contractor to keep full set of drawings on site.  
 Contractor is responsible for the correct setting out of the building on site with particular reference to boundaries and building lines.  
 Contractor and Engineer to verify all levels and dimensions on site and check same against Architect's drawings before commencing work.  
 Figured dimensions to be used as preference to scaled dimensions.  
 Large scale details to be used where available.  
 COPYRIGHT  
 Please note that the copyright of the intellectual works and published editions contained herein is vested with The Fold Architecture. Any adaption, distribution, sale or for hire, or any form of reproduction of these works, in any part or in their entirety, by any party other than The Fold Architecture is and infringement of this copyright.

**REVISIONS**

Rev.	Description	Date



N-W ELEVATION 1:50



S-W ELEVATION 1:50

**RIDER PLAN**

PROJECT STATUS : Local Authority Submission

Elevations TFA-12-001

**House Raeside**  
 erf 141380  
 3A Chiappini Street, Schotschekloof  
 Cape Town, Western Cape

DRAWING NO.	DRAWN	REVISION
TFA-12-001-LA-103	CvN	A
SCALE	CHECKED	DATE
1:50	TFA	2015-12-08

2nd Floor 71 Buitengracht Street Cape Town 8001  
 P: Box 50772 Waterfront Cape Town 8002  
 T: +27 21 423 9436  
 F: +27 86 653 8995  
 E: info@thefold.co.za  
 W: www.thefold.co.za