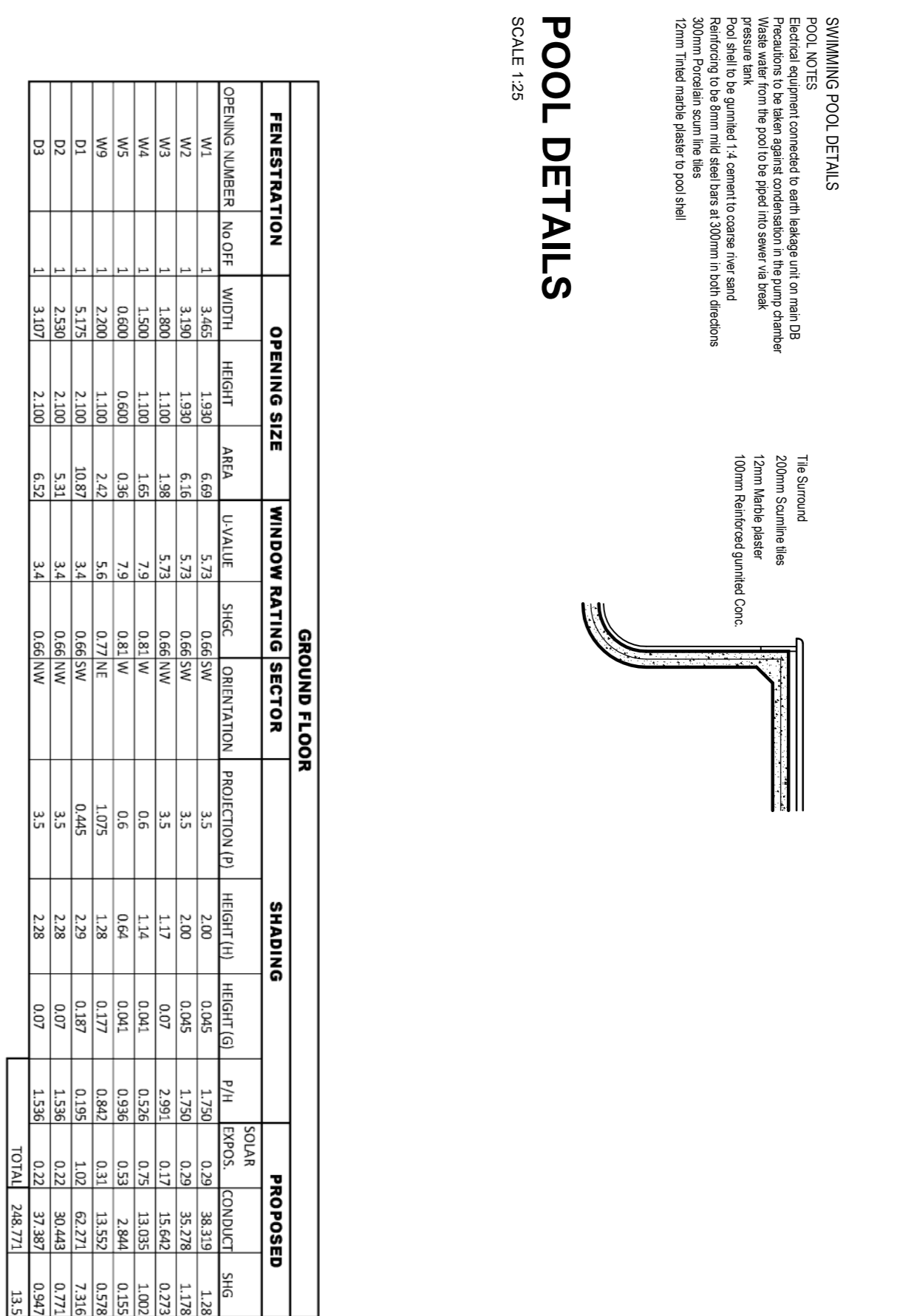


The Contractor is to verify all dimensions & levels on site before commencing any work. Any discrepancies are to be reported to the Architect immediately.

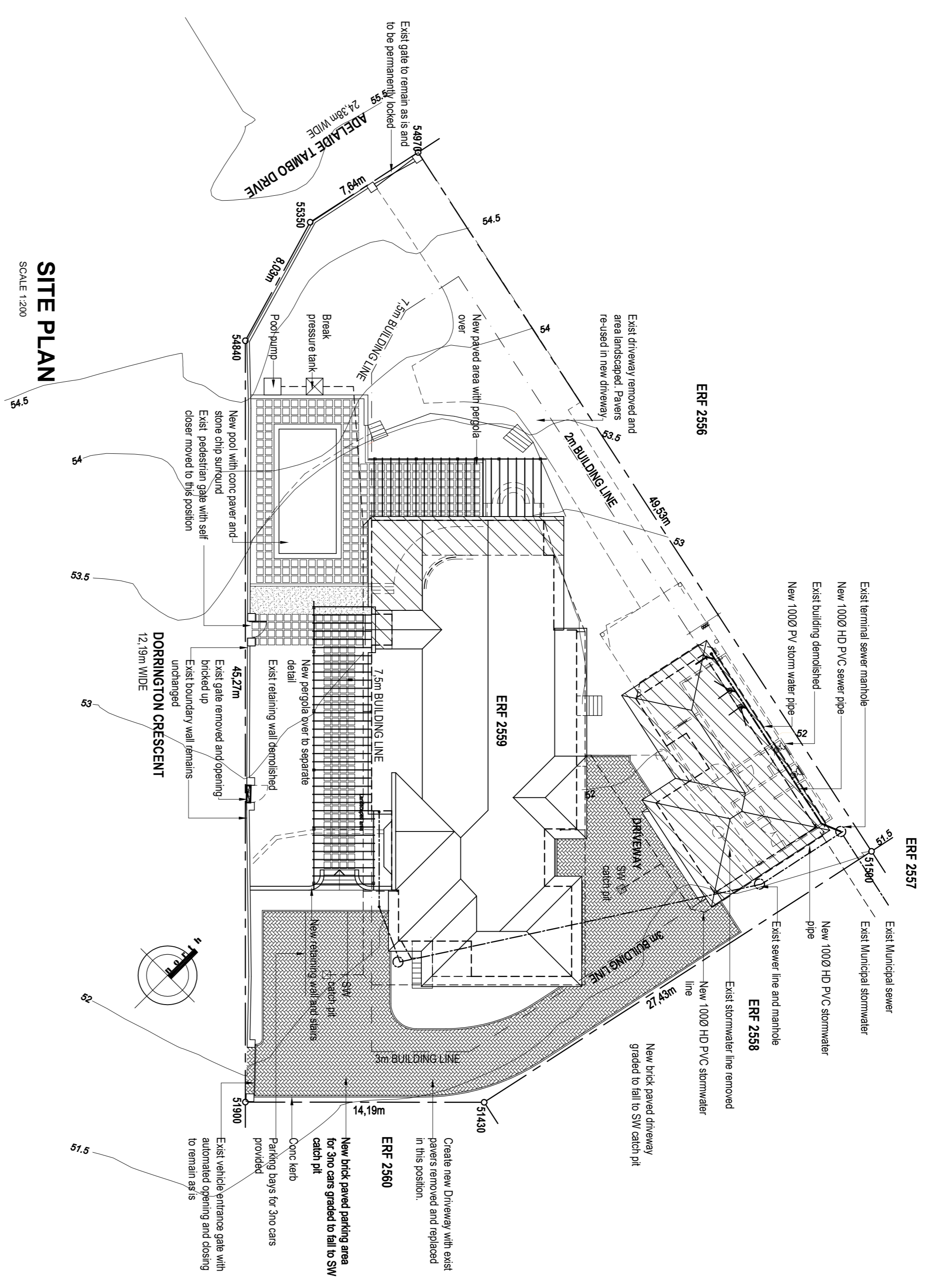
REVISION

NO.	DESCRIPTION



POOL DETAILS

SCALE 1:25



GROUND FLOOR

OPENING NUMBER	NO OF	WIDTH	HEIGHT	AREA	U-VALUE	SIGCF	ORIENTATION	PROJECTION (P)	HEIGHT (H)	HEIGHT (G)	P/W	EXPOS.	CONDUCT	SIGCF
W1	1	3.461	1.930	6.68	5.73	0.65	SW	3.5	2.00	0.045	1.726	0.29	38.319	1.28
W2	1	3.190	1.990	6.36	5.73	0.65	SW	3.5	2.00	0.045	1.726	0.29	35.278	1.28
W3	1	1.900	1.990	3.78	5.73	0.65	SW	3.5	2.00	0.045	1.726	0.29	13.615	1.28
W4	1	1.500	1.100	1.65	7.9	0.81	NW	0.6	1.34	0.041	0.391	0.25	13.615	1.00
W5	1	0.600	0.600	0.36	7.9	0.81	NW	0.6	0.64	0.041	0.391	0.31	2.844	0.378
W9	1	2.200	1.100	2.42	5.6	0.77	NE	1.095	1.28	0.177	0.847	0.31	13.559	0.378
D1	1	5.175	2.100	10.87	3.4	0.65	SW	0.445	2.29	0.187	0.198	1.02	62.271	7.316
D2	1	2.590	2.100	5.44	3.4	0.65	NW	0.445	2.28	0.07	1.391	0.22	30.445	0.72
D3	1	3.107	2.100	6.53	3.4	0.65	NW	0.445	2.28	0.07	1.391	0.22	34.871	0.72
TOTAL													248.271	13.1

CLADDING TO COMPLY TO SANS 1040 PART N

Window No. (Refer to drawing)	Frame material	Window description	Cladding material	Thickness	Cladding min	Cladding max	Area
W1	Aluminium	2/6 sliding sections with 2/6 fixed panes	Uncoated safety glass	6.0mm	max. area 2.93sqm	max. area 2.93sqm	14.136
W2	Aluminium	2/6 sliding sections with 2/6 fixed panes	Uncoated safety glass	6.0mm	max. area 2.93sqm	max. area 2.93sqm	13.289
W3	Aluminium	2/6 side hung outward opening sections and two fixed panes	Monolithic coated glass	6.0mm	max. area 1.54sqm	max. area 1.54sqm	10.600
W4	Aluminium	2/6 side hung outward opening sections and two fixed panes	Monolithic coated glass	6.0mm	max. area 1.54sqm	max. area 1.54sqm	8.292
W5	Aluminium	2/6 side hung outward opening sections and two fixed panes	Monolithic coated glass	6.0mm	max. area 1.54sqm	max. area 1.54sqm	9.600

Door No.	Door section	Frame material	Door description	Cladding material	Thickness	Cladding min	Cladding max	Area
D1	5175 x 2100	Aluminium	Sliding folding door with two leaves	Uncoated low E safety glass double glazed	6.0mm	max. area 2.93sqm	max. area 2.93sqm	14.136
D2	2530 x 2100	Aluminium	Sliding folding door with two leaves	Uncoated low E safety glass double glazed	6.0mm	max. area 2.93sqm	max. area 2.93sqm	10.600
D3	3107 x 2100	Aluminium	Sliding folding door with two leaves	Uncoated low E safety glass double glazed	6.0mm	max. area 2.93sqm	max. area 2.93sqm	13.559
D4	2815 x 2100	Aluminium	Sliding door with two sliding leaf and 1 no fixed pane	Uncoated low E safety glass	6.0mm	max. area 2.93sqm	max. area 2.93sqm	11.716

FINEPOINT STUDIO
 ARCHITECTURAL DESIGN
 C 084 5710 3880 F 086 728 4005 E ian.damirell@finepointstudio.co.za
 Ian Damirell
 1009 Ave 317 Ave Two SACE SAAT

PROPOSED ALTERATIONS AND ADDITIONS FOR MR AND MRS CONNOR ON ERF 2559, 11 DORRINGTON CRES DURBAN NORTH

SUBMISSION DRAWING - SITE PLAN

Job No. **2012/01** Drawing No. **LA04** Rev. No. *****

Author: **IAN DAMIRELL**
 Designer: **IAN DAMIRELL**
 Checker: **IAN DAMIRELL**