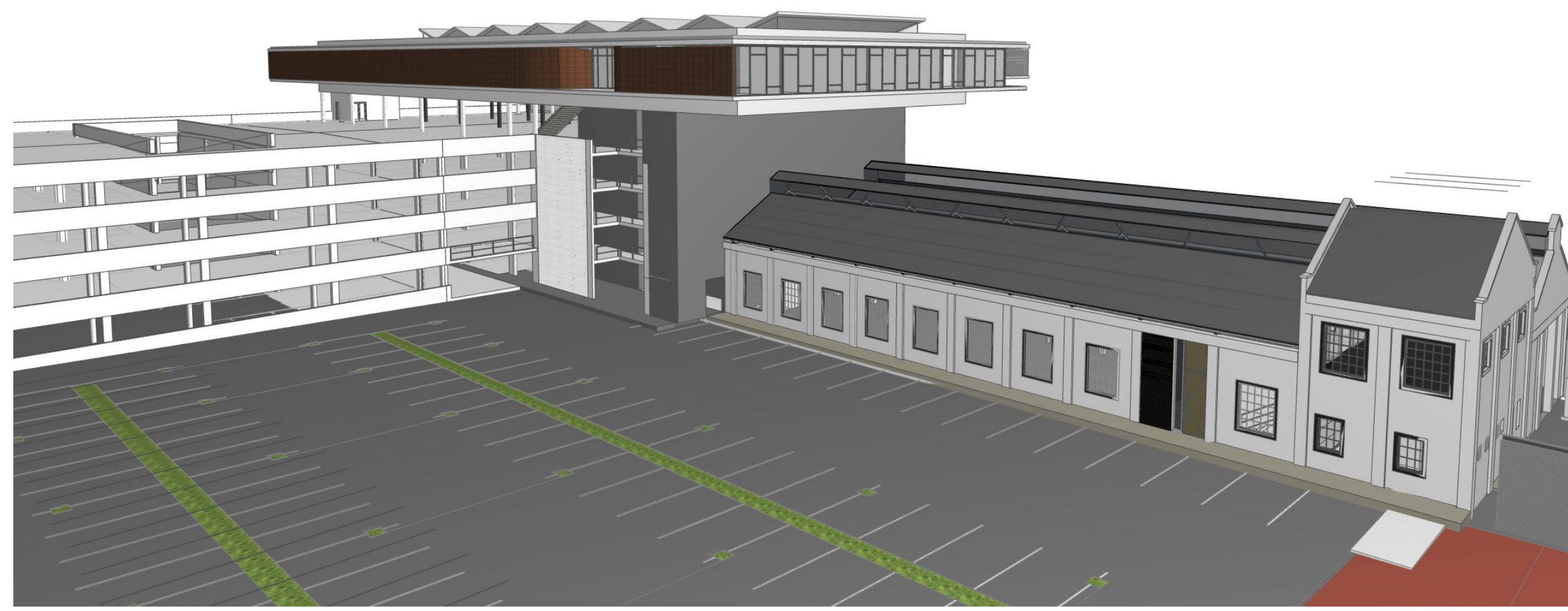
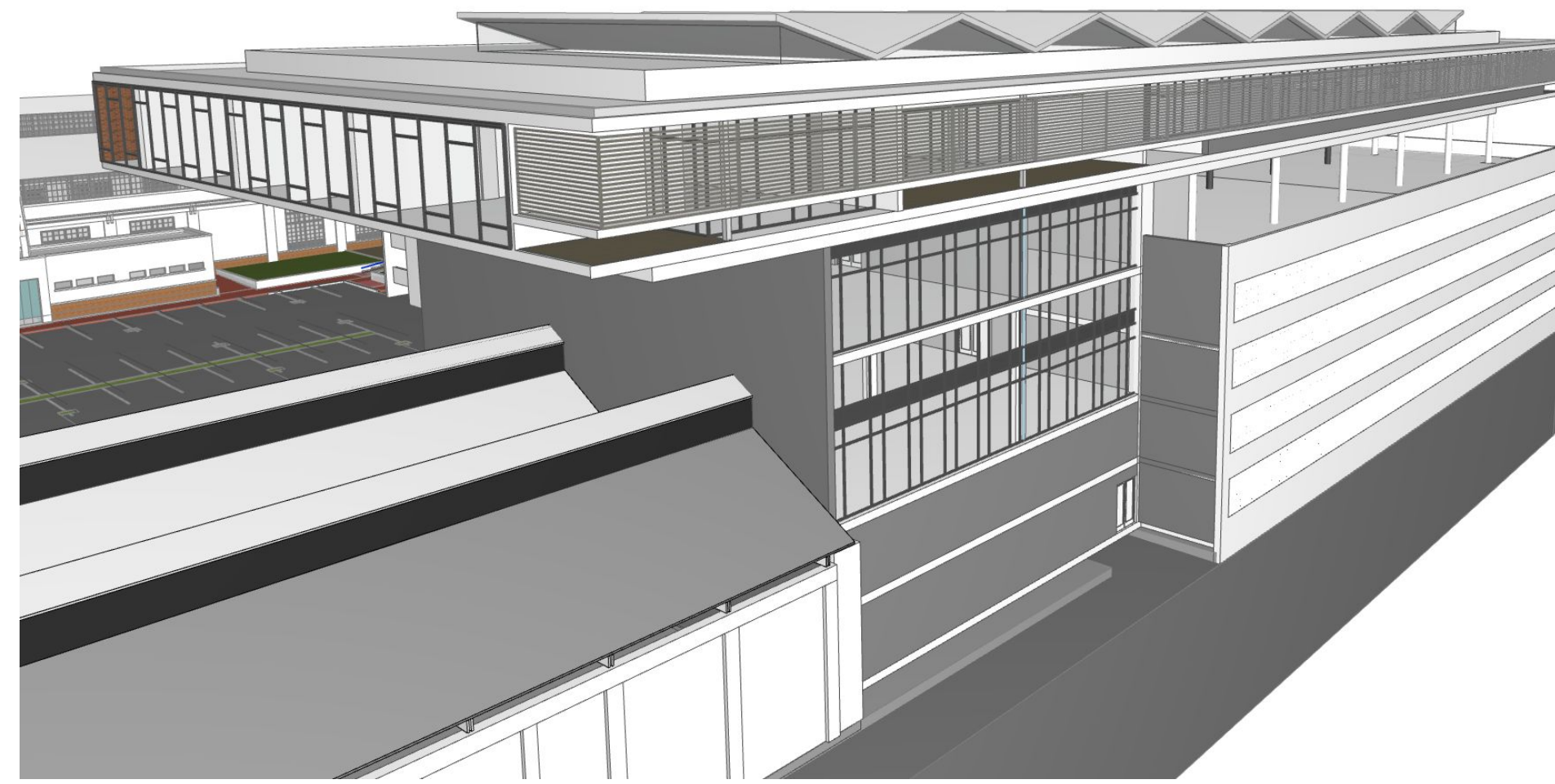


ALL DIMENSIONS TO BE CHECKED ON SITE BY THE CONTRACTOR PRIOR TO CONSTRUCTION.
ANY DISCREPANCIES ARE TO BE REPORTED TO THE ARCHITECT PRIOR TO CONSTRUCTION.
THESE DRAWINGS ARE NOT TO BE SCALED. ONLY THE DIMENSIONS ARE TO BE FOLLOWED.

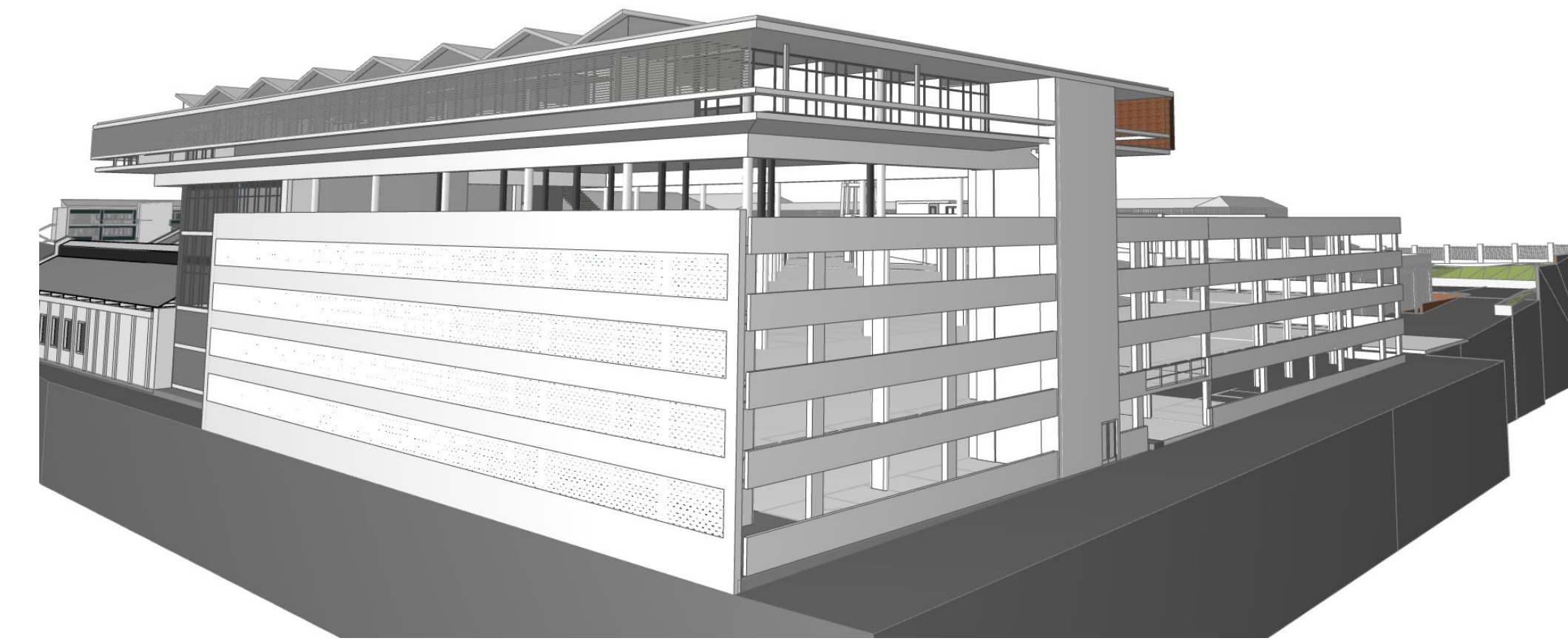
REV	DESCRIPTION	DATE



SOUTH WESTERN | LMP 03



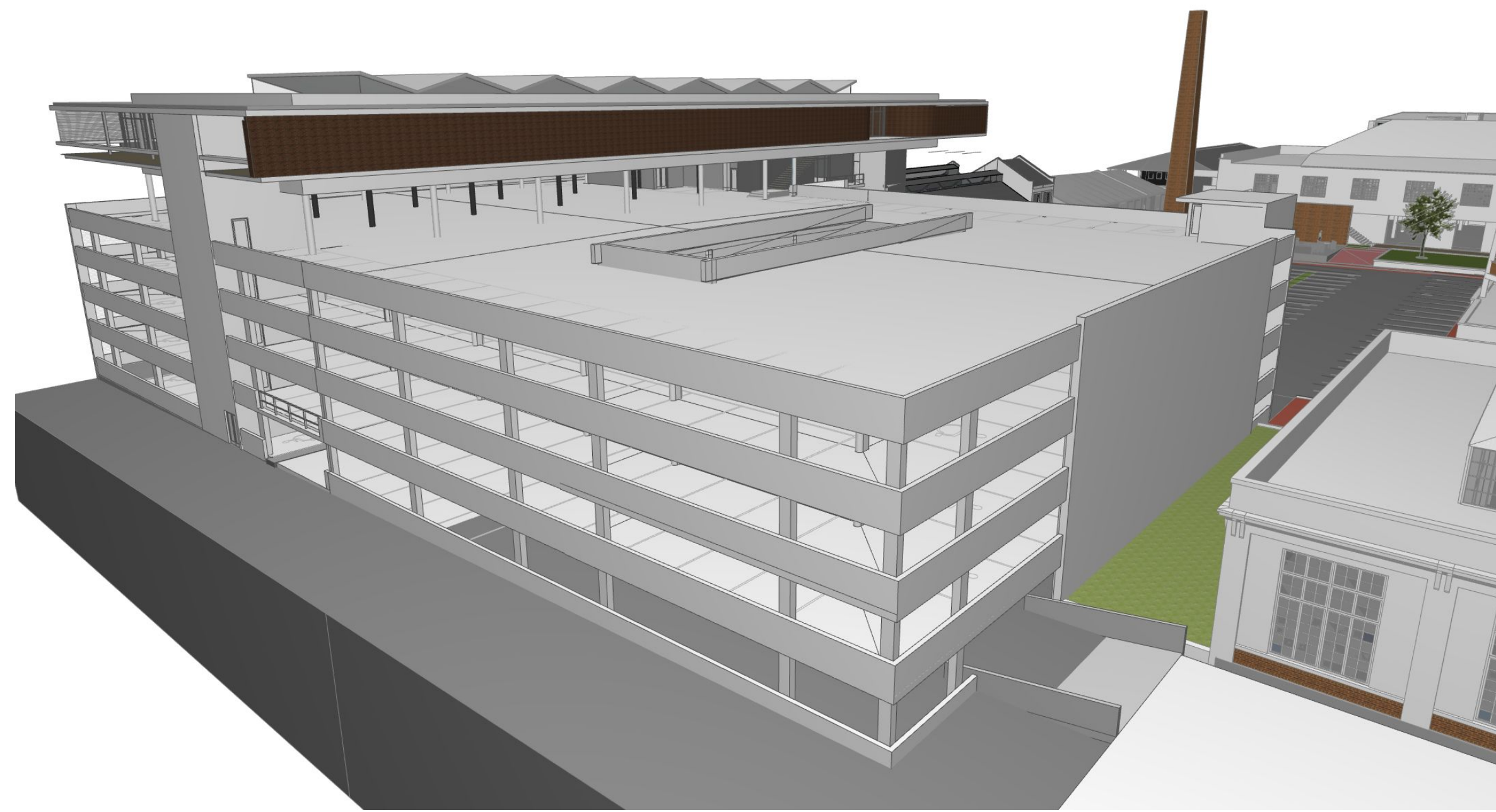
SOUTH EASTER CORNER OF OFFICE | LMP 03



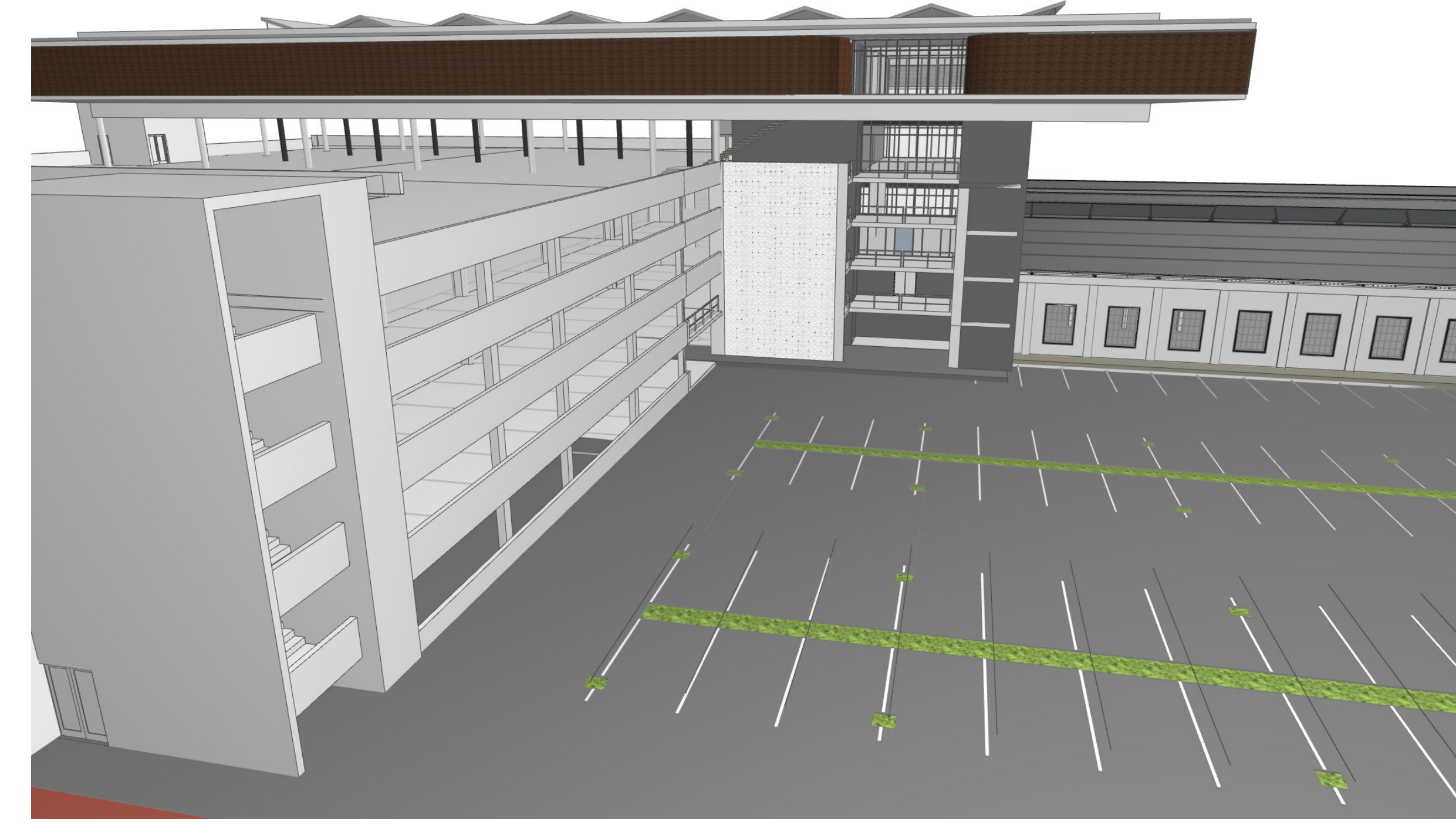
NORTH EASTERN CORNER OF OFFICE AND PARKADE | LMP 03



EXISTING LMP WAREHOUSE TO REMAIN | LMP 03 & LMP 08



NORTH WESTERN CORNER OF OFFICES AND TOP LEVEL OF PARKADE | LMP 03



WESTERN FACADE OF OFFICE FROM COURTYARD LEVEL FLOATING OVER EXISTING BUILDING | LMP 03



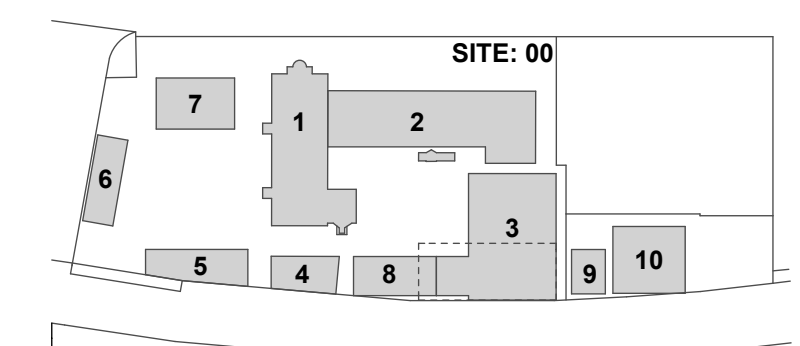
RENDER | VIEW OF LMP 03 FROM GROWTH POINT RUGBY STADIUM TRAINING FIELD

AMAFI SUBMISSION | DEVIATIONS

OWNER: JT ROSS PROPERTIES PTY LTD

J. Ross

LMP | Key plan



LION MATCH PARK | ZONE 03
PROPOSED NEW PARKADE + OFFICE BUILDING
FOR: JT ROSS PROPERTIES PTY LTD
ON ERF 2062, 892 UMGENI ROAD, DURBAN

3D VIEWS

PROJ. NO.	ZONE	STAGE	SERIES	TYPE	REV	DATE	DRWING
2011-008	03	M	GA	300	00	2014.02.07	MLB

dean jay architects

+27 31 303 1214 | 1
+27 31 312 0601 | 1
studio@deanjayarchitects.com | 1
www.deanjayarchitects.com | 1
Unit 7 892 Umgeni Road, Durban, 4001
CK 1997 / 0891441 / 23