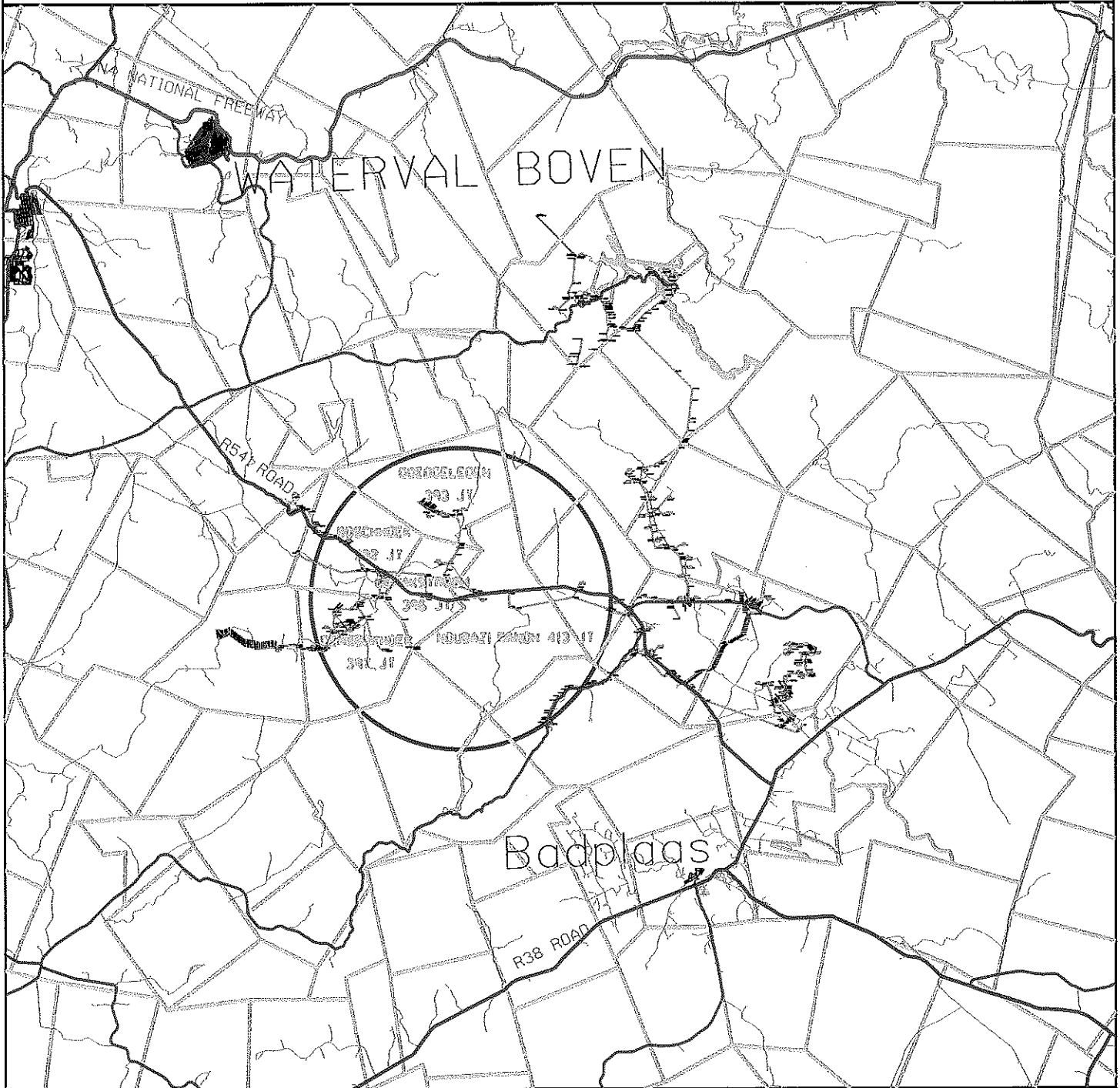


LOCALITY PLAN



**Disclaimer**  
 Geographic Mapping of Malaheri  
 are not responsible for any errors  
 in external datasets displayed on this map.



COORDINATE SYSTEM: LO84/31

SCALE 1:250 000

Information from official maps reproduced under Government printers copyright authority No. 4138 of 28/03/1999



Mpumalanga Operating Unit  
 Land Development

P.O. Box 223  
 eMalaheri 1035  
 Tel 013 - 693 3121  
 Fax 013 - 693 3261

Feeder:	VYGEBOOM/KALKKLOOF 22KV	Surveyor:	
Customer:	N.L THOMO	Geographic mapping:	A MABESELE
Project No:	BA120119901B	Date compiled:	13/04/2015
Portion of map no:	2530 CD N	T-OFF POLE COORD:	Y=54760.7040 30° 27' 13.7" E X=2858600.8050 25° 50' 03.8" S
Page:	1 of 3	Revised by:	
		Revision date:	