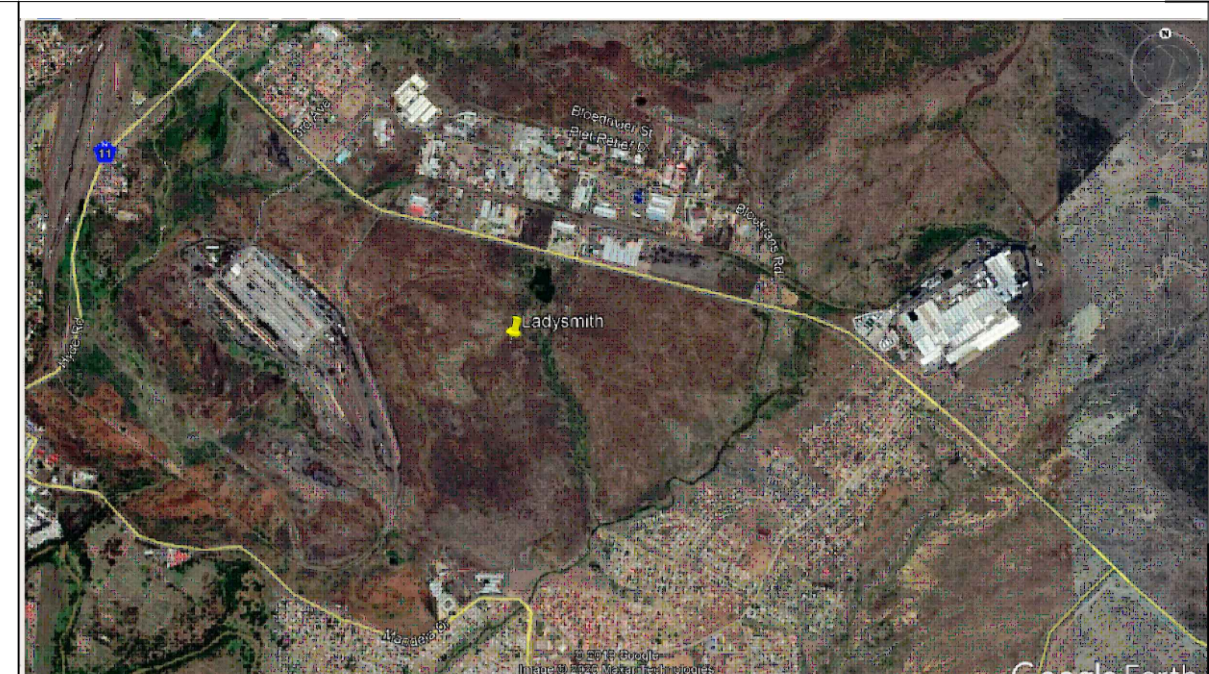
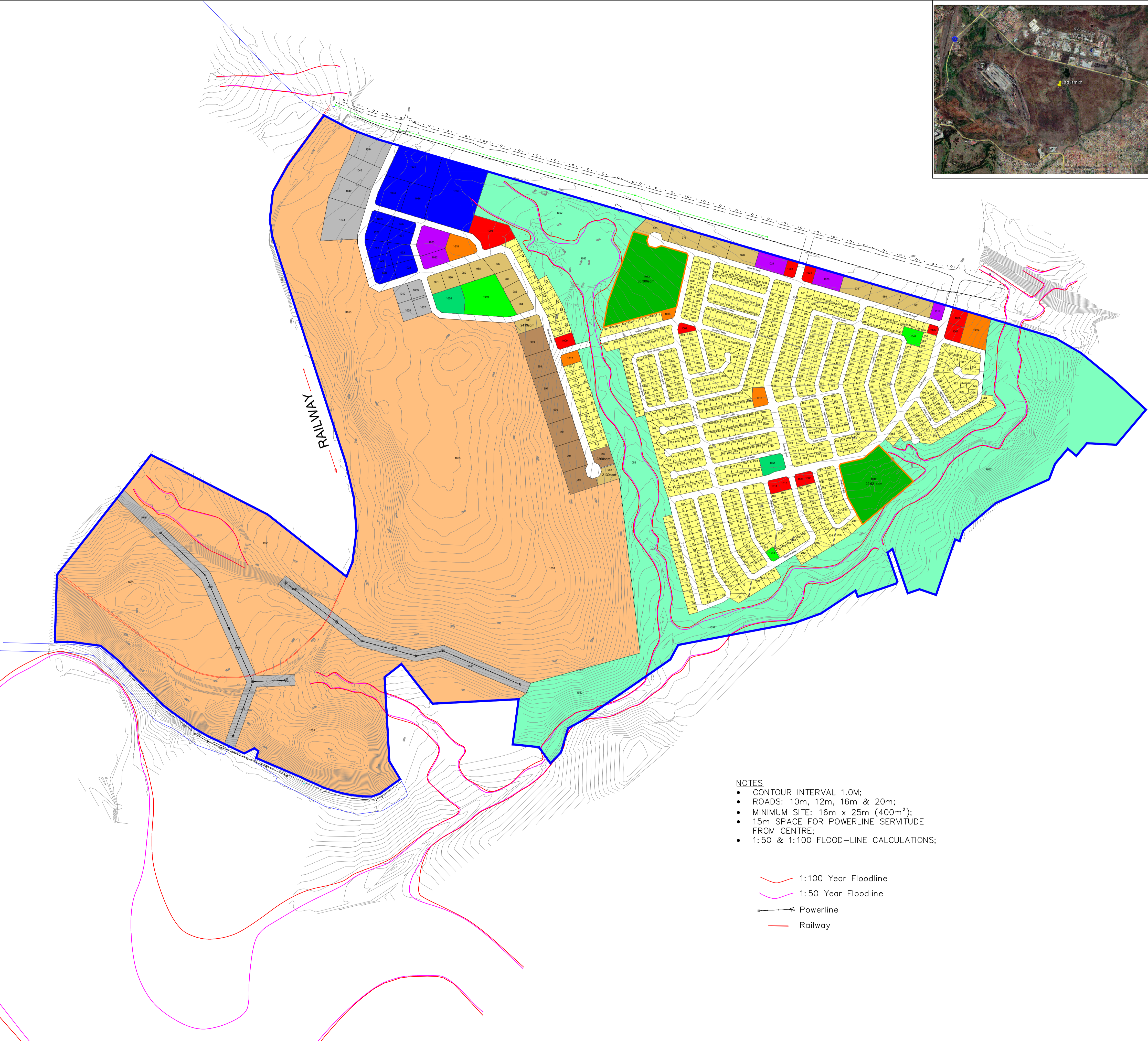


PROPOSED SUBDIVISION & REZONING
ON A PART OF ERF 15990 OF LADYSMITH, UNDER
ALFRED DUMA LOCAL MUNICIPALITY



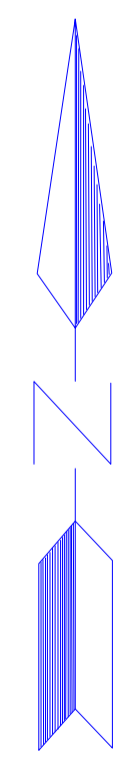
LAND USE TABLE

Legend	Land Use Zone	Site No.	No. of Sites	Area in (Ha)	%
	Special Residential 1	1 - 974	974	42.159	15.551
	Special Residential 2	975 - 991	17	4.761	1.756
	Special Residential 3	992 - 999	8	3.379	1.246
	Limited Commercial	1000 - 1011	12	2.059	0.759
	Educational	1012 - 1013	2	5.792	2.136
	Institutional	1014 - 1018	5	1.445	0.533
	Light Industrial	1019 - 1023	5	1.625	0.599
	Special Industry	1024 - 1036	13	6.513	2.402
	Municipal & Government	1037 - 1046	10	8.717	3.215
	Recreational	1047 - 1049	3	1.462	0.539
	Public Open Space	1050 - 1051	2	0.604	0.222
	Passive Open Space	1052	1	53.808	19.849
	Tourism	1053	1	118.515	43.718
	Roads	—	—	20.247	7.468
	Total		1 053	271.086	100%



- NOTES
- CONTOUR INTERVAL 1.0M;
 - ROADS: 10m, 12m, 16m & 20m;
 - MINIMUM SITE: 16m x 25m (400m²);
 - 15m SPACE FOR POWERLINE SERVITUDE FROM CENTRE;
 - 1:50 & 1:100 FLOOD-LINE CALCULATIONS;

- 1:100 Year Floodline
- 1:50 Year Floodline
- Powerline
- Railway



PROPOSED SUBDIVISION & REZONING
ON A PART OF ERF 15990 OF LADYSMITH, UNDER
ALFRED DUMA LOCAL MUNICIPALITY

DRAWN BY:	X. KHOSA
SCALE:	1:100
DATE:	SEP 2020

CONSULTANTS



Structura Building, Hazeldean Office Park Silverlakes Road,
Tyger Valley, 0081 TEL: +2765 904 5723
P.O Box 36571 FAX: +27 86 6117409
Menlo Park, EMAIL: info@scngroup.co.za
0102