



Agency for Cultural Resource Management
Specialists in Archaeological Studies and Heritage Resource Management

18 September, 2017

Att: Ms Natasha Higgitt
SAHRA
PO Box 4637
Cape Town
8001

Dear Ms Higgitt,

ARCHAEOLOGICAL SCREENING ASSESSMENT, CONSTRUCTION OF ILLEGAL VINEYARDS ON PORTION 13 OF ORANGE FALLS FARM NO. 16, AUGRABIES, NORTHERN CAPE PROVINCE: SECTION 24G RECTIFICATION PROCESS

CASE ID: 11307

Your letter dated 30 August, 2017 (Interim Comment) refers:

Please note the following:

1. The affected portion of land is entirely transformed and degraded (refer to Figure 1).
2. The 'illegal' vineyard has been operational since 2010.
3. The affected landholdings were already grazed prior to development of the vineyards.
4. No archaeological remains were found during a screening assessment of the affected site.

However, relatively large numbers of Middle Stone Age tools in banded ironstone were recorded during an assessment of Farm No. 16/13 (refer to Figure 2). This study, separate from the Section 24G Rectification, was undertaken as part of a Basic Assessment Process for a proposed new vineyard development on the same farm, and is part of a separate application process being done by EnviroAfrica cc¹. A desktop palaeontological study will also be undertaken by Dr John Almond (Nature Viva) as part of the new application.

I trust this clarifies matters.

Yours sincerely

Jonathan Kaplan

¹ Kaplan, J. 2017 in prep. Archaeological Impact Assessment proposed development of agricultural land on Portion 13 of Orange Falls Farm No. 16, Augrabies Falls Way, Augrabies, Northern Cape. Report prepared for EnviroAfrica cc. ACRM, Cape Town



Figure 1. Orange Falls Farm 16/13. Red polygon illustrates the Section24G Application area

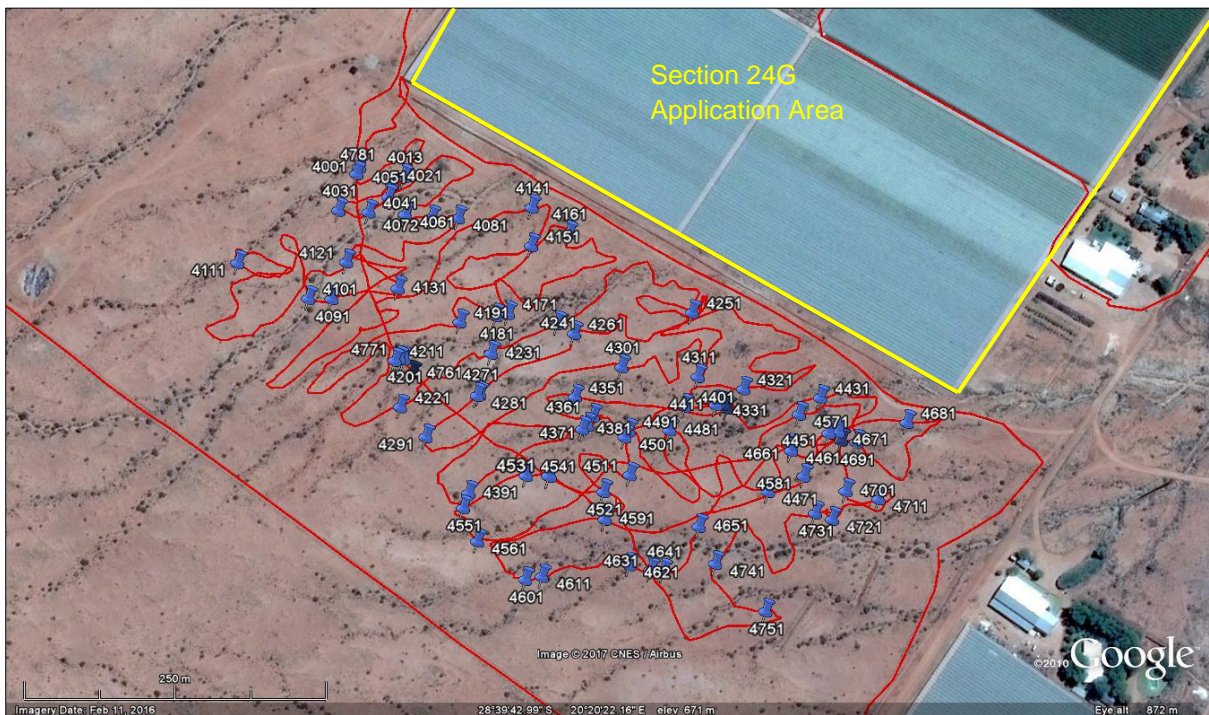


Figure 2. Orange Falls Farm No. 16/13. Archaeological survey for a separate application process. Track paths in red and waypoints of archaeological finds (blue pins).