

SC No.
2445/2010

COMPONENTS:

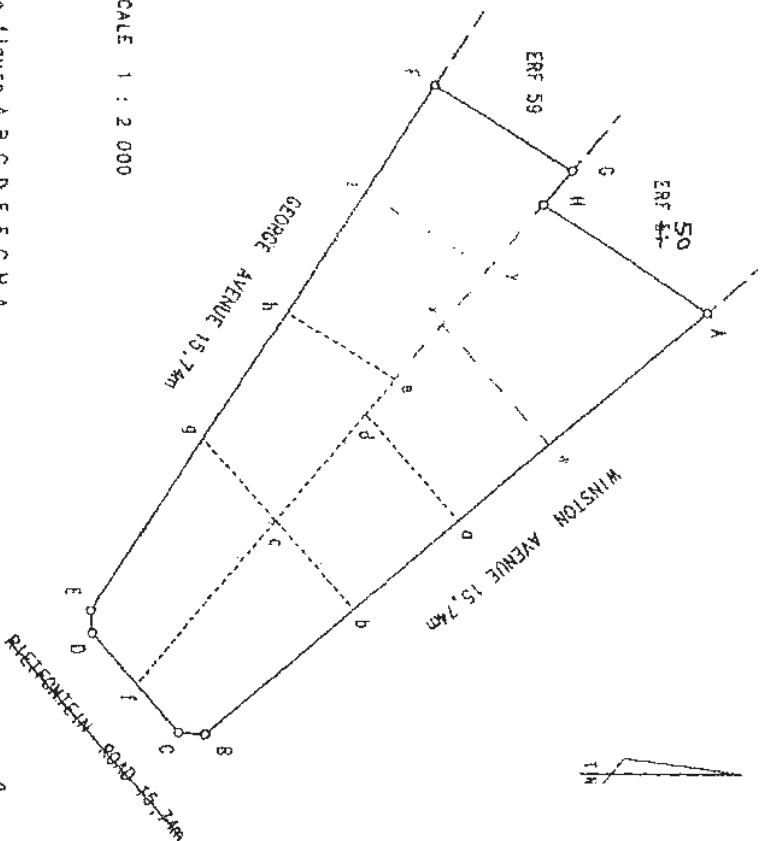
- 1 The figure A,a,d,e,h,F,G,H,A represents Erf 357, vide Diagram S.G.No 9599/2008, Deed of Transfer No. T 13587/2007
- 2 The figures a,b,c,d,p represents Erf 53, vide General Plan No. A 9471/1969, Deed of Transfer No. T20777/1973
- 3 The figures b,B,C,f,c,b represents Erf 54, vide General Plan S.G.No. A 9471/1969, Deed of Transfer No. T 205/1973
- 4 The figure c,f,D,E,S,c represents Erf 55, vide General Plan S.G.No A 9471/1969, Deed of Transfer No. T 15371/1972
- 5 The figure e,c,g,n,e represents Erf 56, vide General Plan S.G.No A 9471/1969, Deed of Transfer No. T 7798/1972

Approved

[Signature]

for
SURVEYOR-
GENERAL
28.07.2010

Ord. No. 15/1986
Section 92(2)(c)



SCALE 1 : 2 000

The figure A B C D E F G H A represents 1,8612 hectares of land being ERF 360 in the Township of RIVONIA EXTENSION 1 and comprising the components 1 to 5 as listed above

Province of Gauteng
Compiled in June 2010
Professional Land Surveyor PLS0087
[Signature] D J CAMERON

Title diagram is annexed to:		The original diagrams are		File ERVEN	
No		as listed above		S.R. No.	
d d				T P 3490	
1 1 0	Pratoria Registrar of Seeds			Comp. IRIA-7/c	
				G.P. SG.No. A9471/1969	