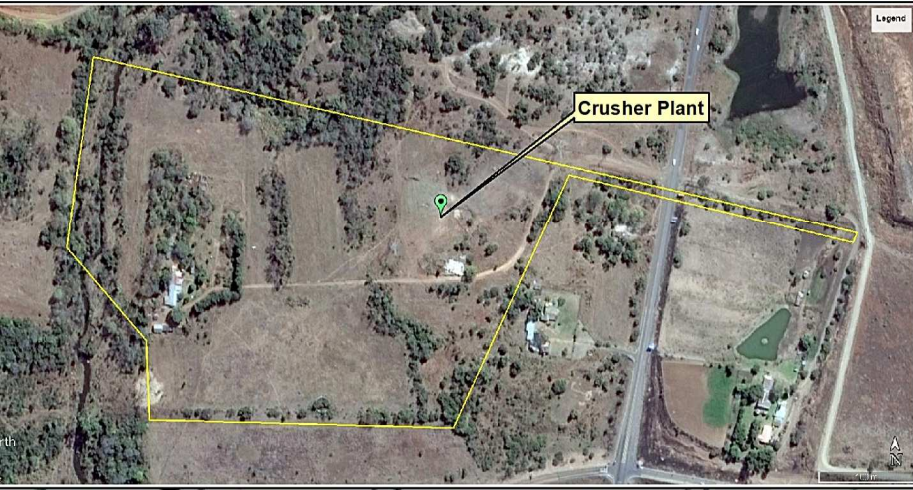


# PROPOSED MAKWASE CRUSHER PLANT DEVELOPMENT ON THE FARM KAFFERSKRAAL 342 JQ PORTION 233 RUSTENBURG LOCAL MUNICIPALITY (WARD 32) NORTH-WEST PROVINCE

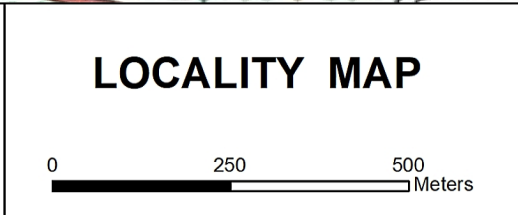


**LEGEND**

Boundary and Beacon	[Symbol]
Boundary	[Symbol]
Area	[Symbol]
River	[Symbol]
Water	[Symbol]
Annual River	[Symbol]
Annual Water	[Symbol]
Course	[Symbol]
Viaduct	[Symbol]
Structure (above ground)	[Symbol]
Dam; Reservoir; Water Point	[Symbol]
Rock Outcrop	[Symbol]
Land	[Symbol]
Vineyard	[Symbol]
Ground	[Symbol]
Freeway; National Route	[Symbol]
Route	[Symbol]
Road; Bench Mark	[Symbol]
Bridge	[Symbol]
Hiking Trail	[Symbol]
Station or Siding	[Symbol]
Way; Tunnel	[Symbol]
Cutting	[Symbol]
Area (High, Low Density)	[Symbol]
Ruin	[Symbol]
Police Station; Store	[Symbol]
Shop; School; Hotel	[Symbol]
Monument	[Symbol]
Observation Tower	[Symbol]
Excavation	[Symbol]
Electrical Station; Marine Beacon	[Symbol]
Light and Marine Light	[Symbol]
Grave	[Symbol]

**LEGEND**

Plant Location	[Symbol]
Kafferskraal 342 JQ Portion 233	[Symbol]



Datum: WGS 84  
 Data Source: ENPAT 2001  
 Chief Surveyor General  
 SG Code: TOJQ00000000034200233

**BOBOLELE CONSULTING (PTY) LTD**  
 68 Hill of Good Hope, Springfield Street, Carlswald, 1685  
 Tel: 062 401 4013, E-mail: bobolele1@gmail.com

Prepared by: Andre Zanolli  
 Contact Person: Andre Zanolli  
 E-mail: zoology3a@gmail.com  
 Contact Number: 072 601 2111  
 Date: 06 November 2011