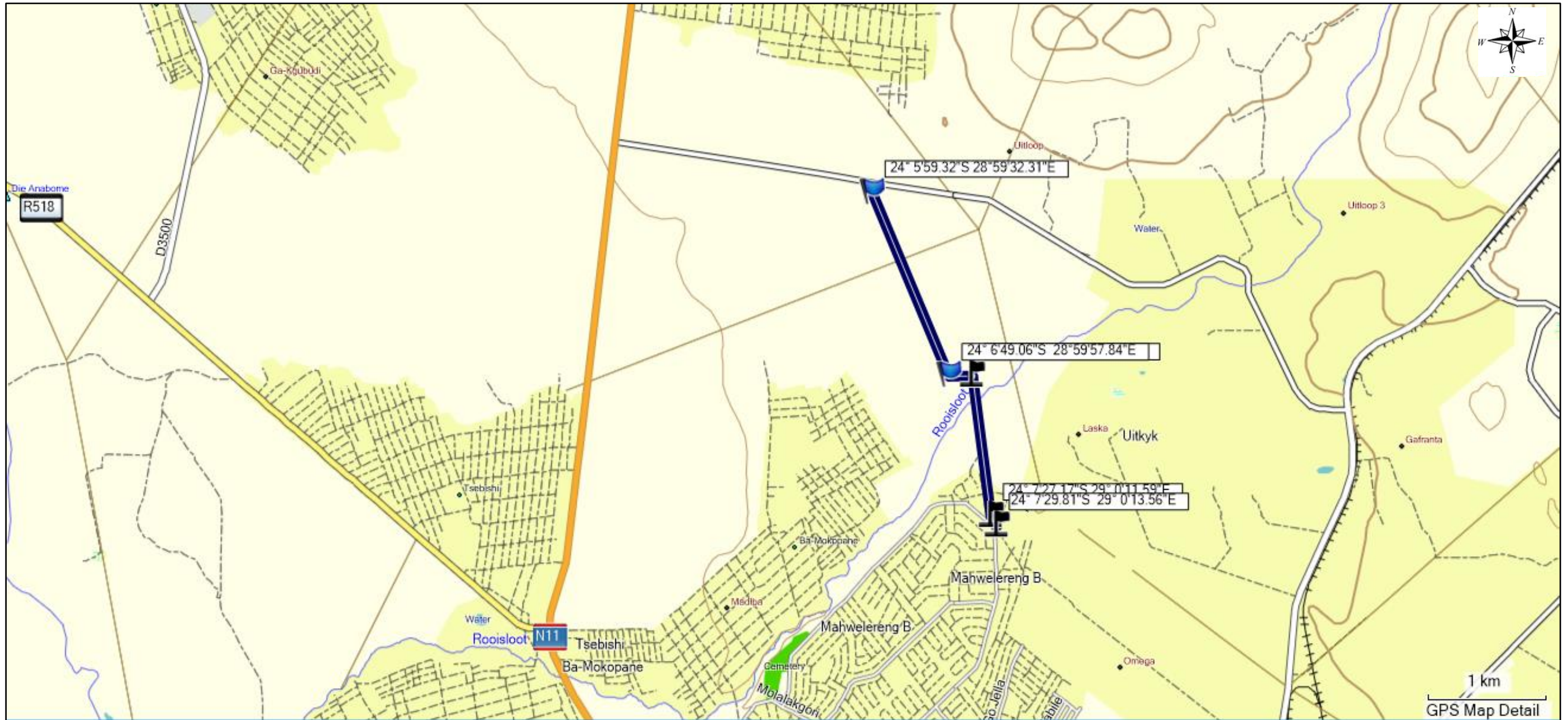


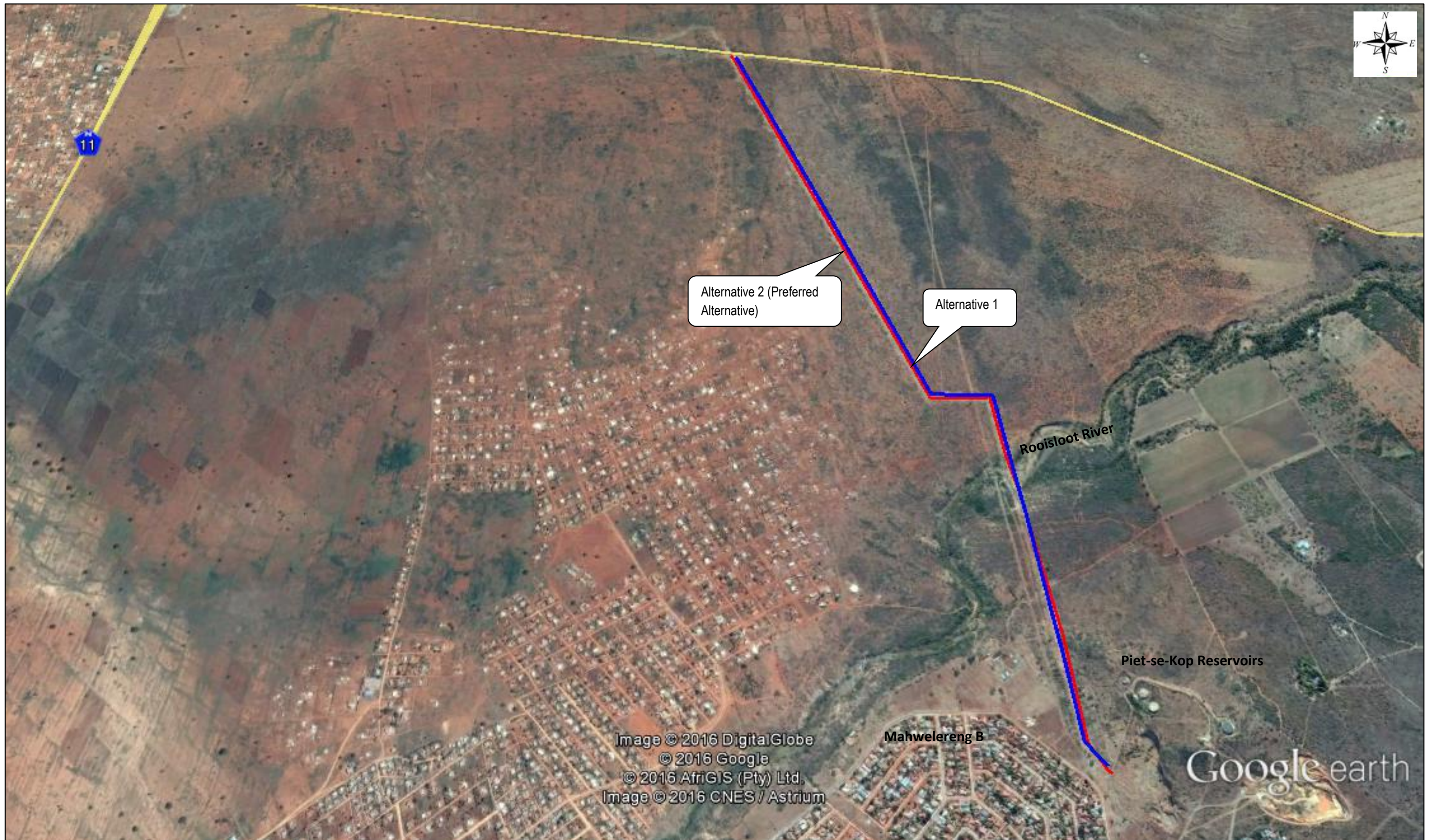
Locality Map:

Proposed 3,2km, 400mm diameter water pipeline, with a throughput of 163.15 l/s linking existing pipelines from the Piet-se-Kop reservoir to existing pipelines near Tshamahansi Village



Aerial Map:

Proposed 3,2km, 400mm diameter water pipeline, with a throughput of 163.15 l/s linking existing pipelines from the Piet-se-Kop reservoir to existing pipelines near Tshamahansi Village.



Locality Map:
Proposed 16,6km, 600mm diameter water pipeline, with a throughput of 271.10l/s linking existing pipelines near Witrivier/Phafola to Bakenberg.



Aerial Map:

Proposed 16,6km, 600mm diameter water pipeline, with a throughput of 271.10l/s linking existing pipelines near Witrivier/Phafola to Bakenberg.

