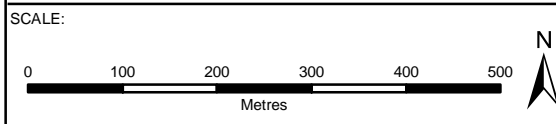
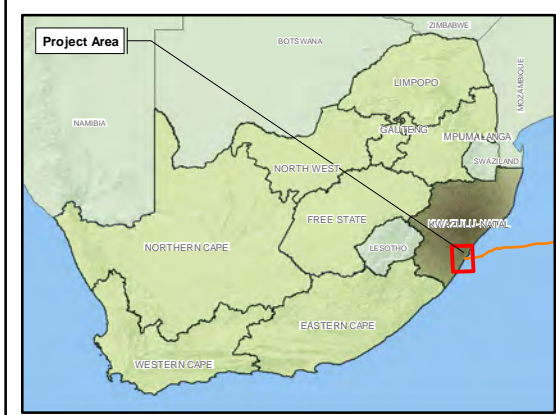


APPENDIX D

PROJECT LOCALITY MAPS



- ### Legend
- Beach Manhole
 - Splicing Manhole
 - Liquid Telecom Manhole
 - Terrestrial Cable Route
 - - - Road Drill
 - Subsea Cable Route
 - ▨ Servitudes



TITLE:
 Direct Area of Influence (AOI) map of the proposed METISS subsea cable system, Amanzimtoti, Kwa-Zulu Natal province.

CLIENT:
Alcatel Submarine Networks (ASN)

DATE: May 2019	CHECKED: AB	PROJECT: 0482086
DRAWN: TN	APPROVED: VS	SCALE: 1:8 000

DRAWING: A3_OrthoLayoutAOIMap_ASN_Rev3	REV: 3
---	-----------

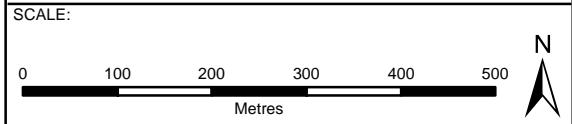
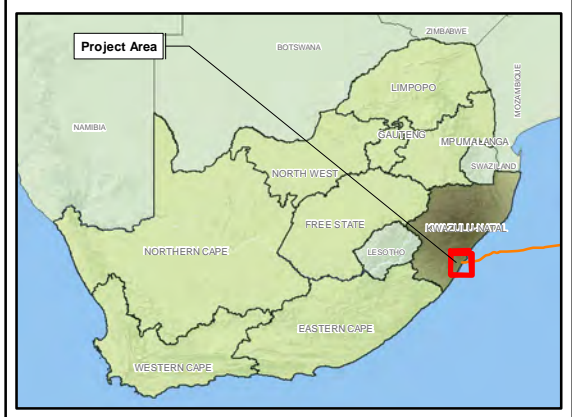
ERM
 1st Floor
 The Great Westerford Building
 240 Main Road
 Rondebosch, 7700
 Tel: +27 (0)21 681 5400
 Fax: +27 (0)21 686 0736

Projection: Geographic, Datum: WGS84
 Source: ESRI Map Service,
 eThekweni Web Map Service, CBA 2016, Servitudes
 Inset: ESRI Data and Maps

SIZE:
A3



- ### Legend
- Beach Manhole
 - Splicing Manhole
 - Liquid Telecom Manhole
 - Terrestrial Cable Route
 - Road Drill
 - Subsea Cable Route
 - Rivers
 - CBA Irreplaceable (2016)



TITLE:
Sensitivity map of the proposed METISS subsea cable system, Amanzimtoti, Kwa-Zulu Natal province.

CLIENT:
Alcatel Submarine Networks (ASN)

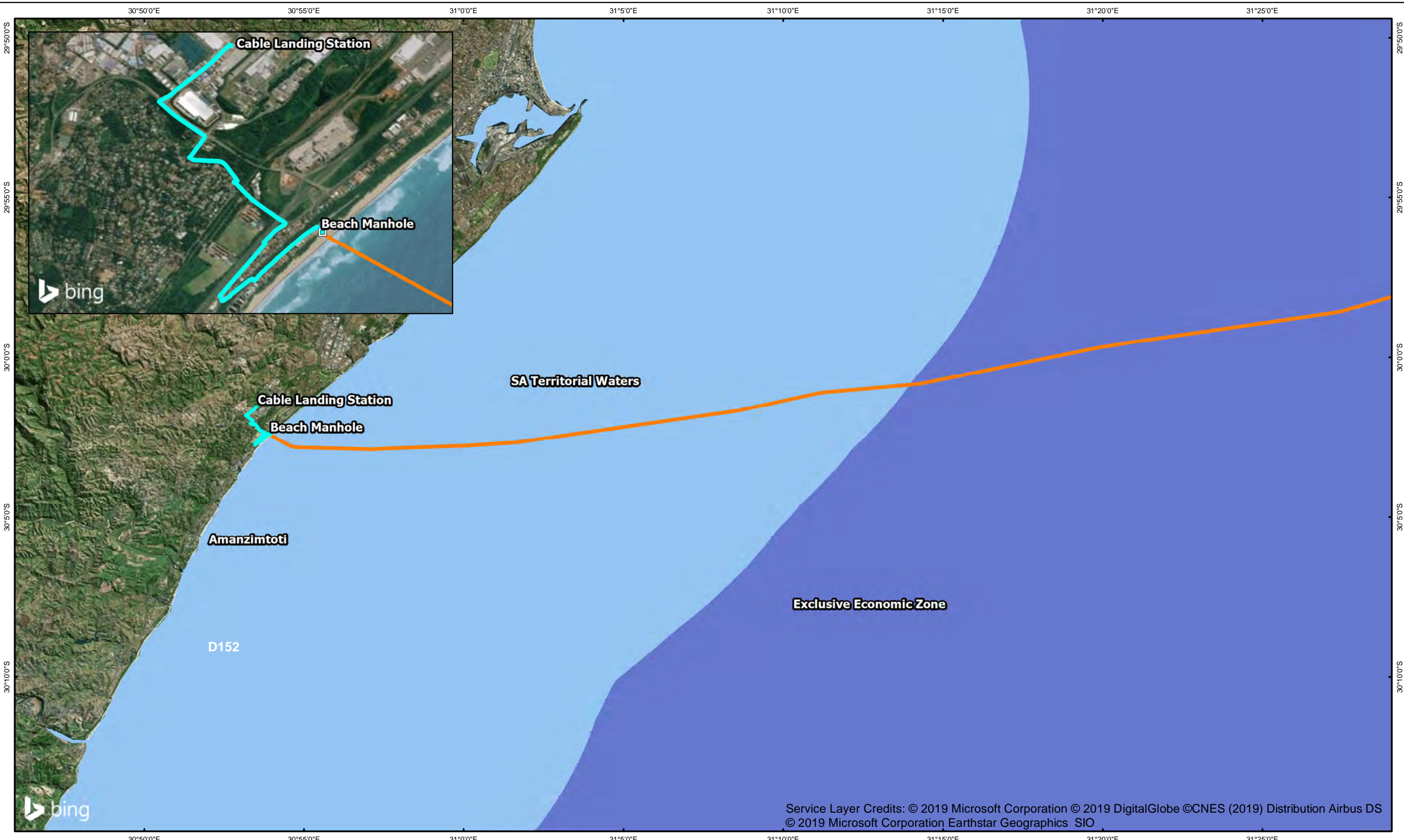
DATE: May 2019	CHECKED: AB	PROJECT: 0482086
DRAWN: TN	APPROVED: VS	SCALE: 1:8 000

DRAWING: A3_OrthoLayoutSensitivityMap_ASN_Rev3	REV: 3
---	-----------

ERM
 1st Floor
 The Great Westerford Building
 240 Main Road
 Rondebosch, 7700
 Tel: +27 (0)21 681 5400
 Fax: +27 (0)21 686 0736





Projection: Geographic, Datum: WGS84
 Source: ESRI Map Service, eThekweni Web Map Service, CBA 2016, Servitudes
 Inset: ESRI Data and Maps

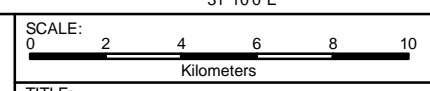
SIZE:
A3



Service Layer Credits: © 2019 Microsoft Corporation © 2019 DigitalGlobe ©CNES (2019) Distribution Airbus DS
 © 2019 Microsoft Corporation Earthstar Geographics SIO

Legend

-  Terrestrial Cable Route
-  Subsea Cable Route
-  SA Territorial Waters
-  Exclusive Economic Zone



TITLE:
 Locality map of the proposed METISS subsea cable system,
 Amanzimtoti, Kwa-Zulu Natal province.

CLIENT:
Alcatel Submarine Networks (ASN)



DATE: May 2019	CHECKED: AB	PROJECT: 0482086
DRAWN: TN	APPROVED: VS	SCALE: 1:200 000

DRAWING:
 A3_TopoLocalityMap_ASN_Rev3

ERM
 1st Floor
 The Great Westerford Building
 240 Main Road
 Rondebosch, 7700
 Tel: +27 (0)21 681 5400
 Fax: +27 (0)21 686 0736



Projection: Geographic, Datum: WGS84
 Source: Chief Directorate National Geo-Spatial Information WGS2930DD_31CC_30308B.TIF
 Inset: ESRI Data and Maps

SIZE:
 A3



LIQUID TELECOM KZN PROJECTS

Metiss ASN

PROJECT DETAIL

Metiss ASN
Amanzimtoti



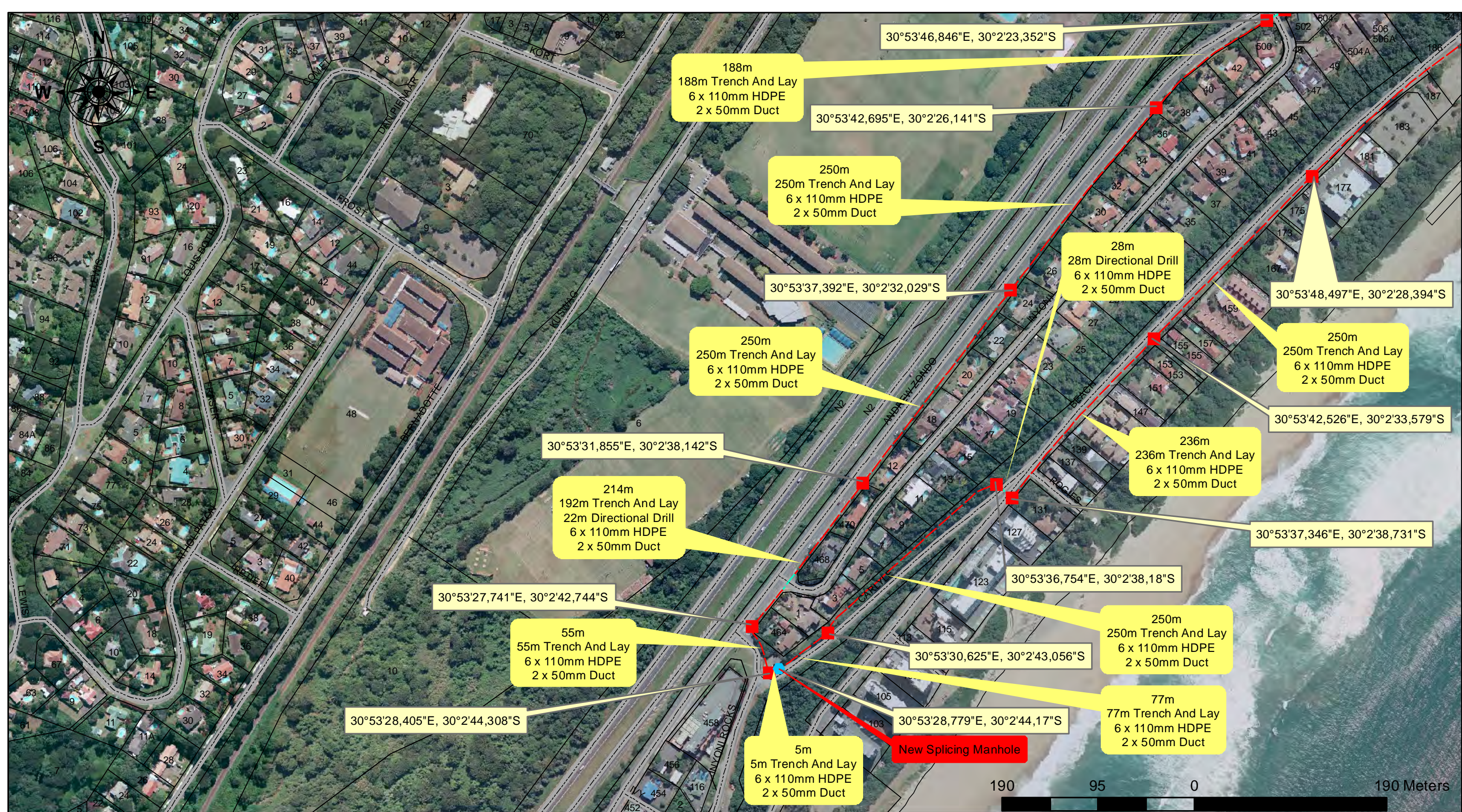
P.O.BOX 1630
UMHLANGA
4320
TEL : 031 5662296

DRAWN	KESAVAN ARJOON
DESIGNED	KESAVAN ARJOON
DATE	06 MAY 2019
CHECKED	SASHLIN NAIDOO
ROUTE PLANNER	ANDILE SCINA
CONTACT NUMBER	011 585 0261
ESD	
APPROVED	
PAGE SIZE	A4
SCALE	1:866



Legend

- ◆ New Splicing Manhole
- New Beach Manhole
- New ASN Pull Through Manhole
- New Directional Drill
- New Trench And Lay
- roads
- parcels



LIQUID TELECOM KZN PROJECTS

Metiss ASN

PROJECT DETAIL

Metiss ASN
Amanzimtoti



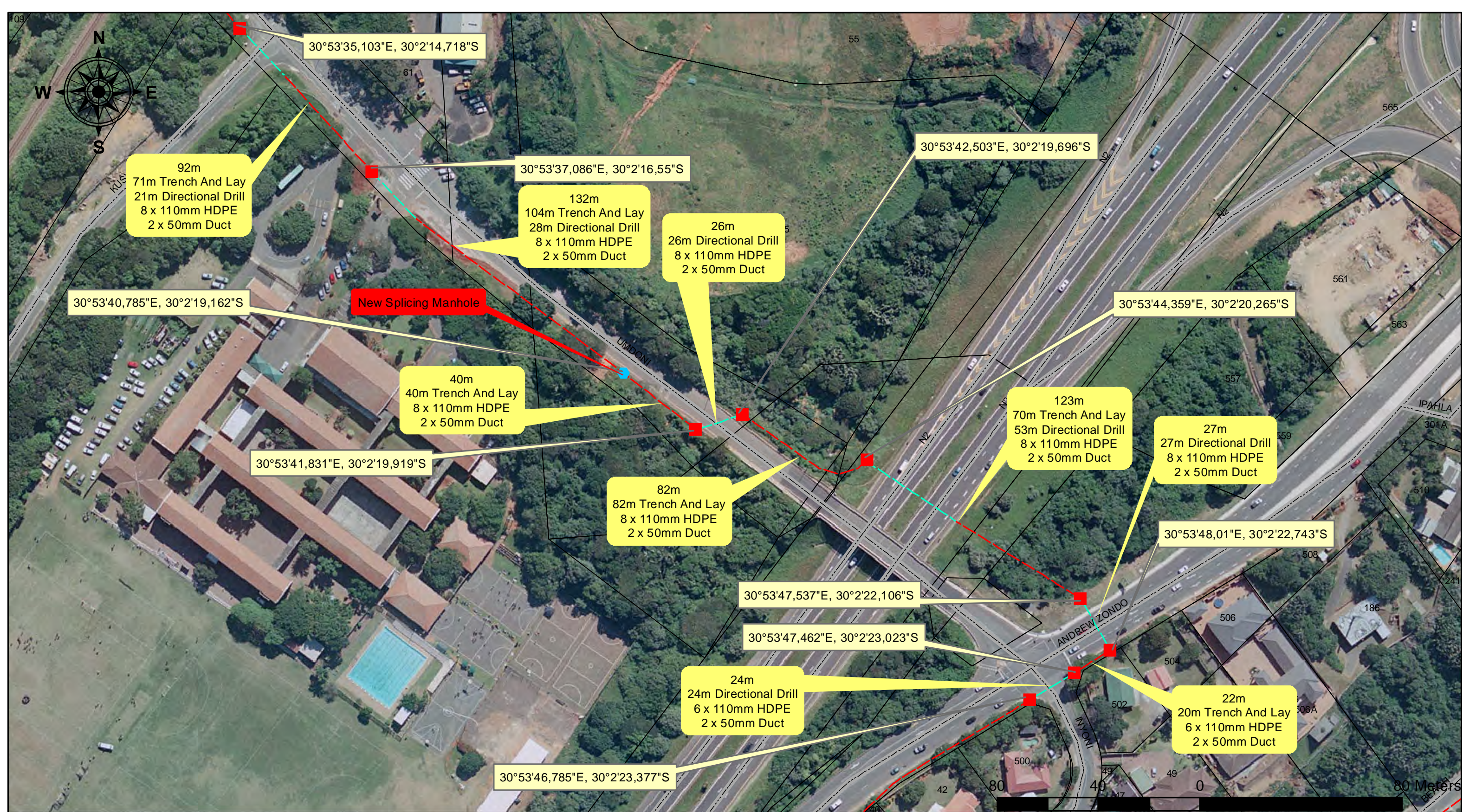
P.O.BOX 1630
UMHLANGA
4320
TEL : 031 5662296

DRAWN	KESAVAN ARJOON
DESIGNED	KESAVAN ARJOON
DATE	06 MAY 2019
CHECKED	SASHLIN NAIDOO
ROUTE PLANNER	ANDILE SCINA
CONTACT NUMBER	011 585 0261
ESD	
APPROVED	
PAGE SIZE	A4
SCALE	1:3 465



Legend

- ◆ New Splicing Manhole
- New Beach Manhole
- New ASN Pull Through Manhole
- New Directional Drill
- New Trench And Lay
- roads
- parcels



LIQUID TELECOM KZN PROJECTS

Metiss ASN

PROJECT DETAIL

Metiss ASN
Amanzimtoti



P.O.BOX 1630
UMHLANGA
4320
TEL : 031 5662296

DRAWN	KESAVAN ARJOON
DESIGNED	KESAVAN ARJOON
DATE	24 MAY 2019
CHECKED	SASHLIN NAIDOO
ROUTE PLANNER	ANDILE SCINA
CONTACT NUMBER	011 585 0261
ESD	
APPROVED	
PAGE SIZE	A4
SCALE	1:1 386



Legend

- ◆ New Splicing Manhole
- New Beach Manhole
- New ASN Pull Through Manhole
- New Directional Drill
- New Trench And Lay
- roads
- parcels



LIQUID TELECOM KZN PROJECTS

Metiss ASN

PROJECT DETAIL

Metiss ASN
Amanzimtoti



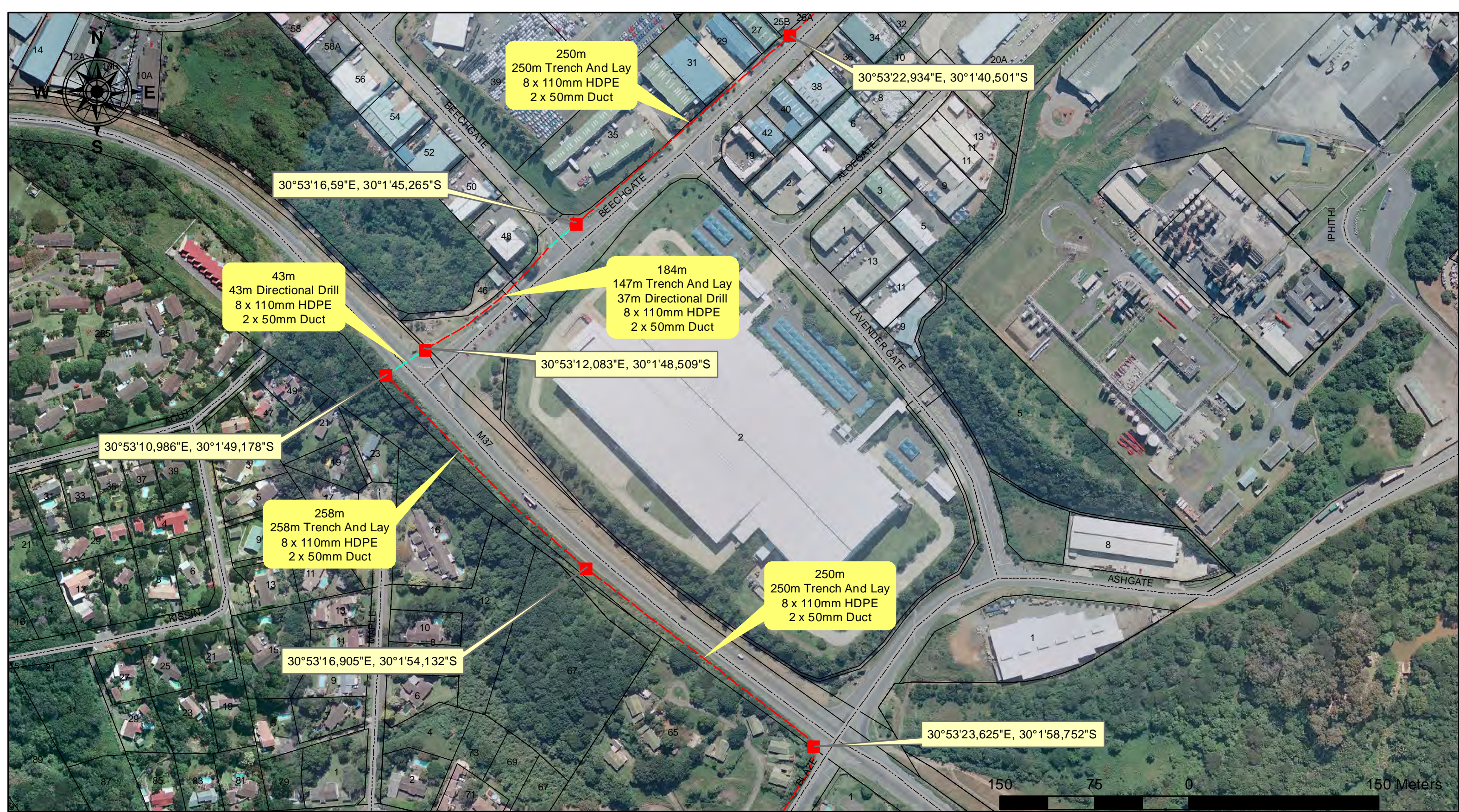
P.O.BOX 1630
UMHLANGA
4320
TEL : 031 5662296

DRAWN	KESAVAN ARJOON
DESIGNED	KESAVAN ARJOON
DATE	24 MAY 2019
CHECKED	SASHLIN NAIDOO
ROUTE PLANNER	ANDILE SCINA
CONTACT NUMBER	011 585 0261
ESD	
APPROVED	
PAGE SIZE	A4
SCALE	1:2 772



Legend

- ◆ New Splicing Manhole
- ◆ New Beach Manhole
- New ASN Pull Through Manhole
- New Directional Drill
- - - New Trench And Lay
- roads
- parcels



LIQUID TELECOM KZN PROJECTS

Metiss ASN

PROJECT DETAIL

Metiss ASN
Amanzimtoti



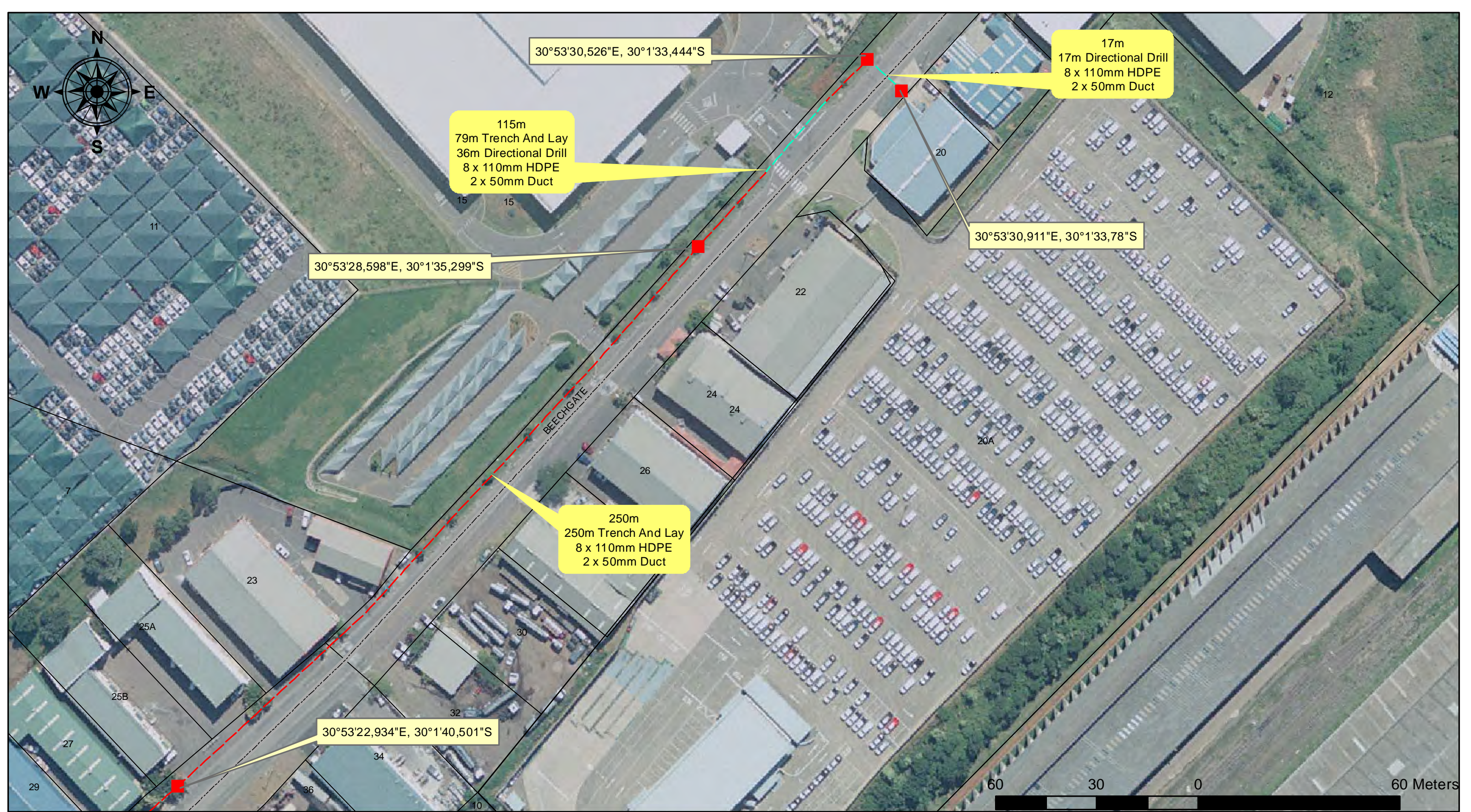
P.O.BOX 1630
UMHLANGA
4320
TEL : 031 5662296

DRAWN	KESAVAN ARJOON
DESIGNED	KESAVAN ARJOON
DATE	24 MAY 2019
CHECKED	SASHLIN NAIDOO
ROUTE PLANNER	ANDILE SCINA
CONTACT NUMBER	011 585 0261
ESD	
APPROVED	
PAGE SIZE	A4
SCALE	1:2 772



Legend

- ◆ New Splicing Manhole
- ◆ New Beach Manhole
- New ASN Pull Through Manhole
- New Directional Drill
- New Trench And Lay
- roads
- parcels



LIQUID TELECOM KZN PROJECTS

Metiss ASN

PROJECT DETAIL

Metiss ASN
Amanzimtoti



P.O.BOX 1630
UMHLANGA
4320
TEL : 031 5662296

DRAWN	KESAVAN ARJOON
DESIGNED	KESAVAN ARJOON
DATE	24 MAY 2019
CHECKED	SASHLIN NAIDOO
ROUTE PLANNER	ANDILE SCINA
CONTACT NUMBER	011 585 0261
ESD	
APPROVED	
PAGE SIZE	A4
SCALE	1:1 040



Legend

- ◆ New Splicing Manhole
- New Beach Manhole
- New ASN Pull Through Manhole
- New Directional Drill
- New Trench And Lay
- roads
- parcels