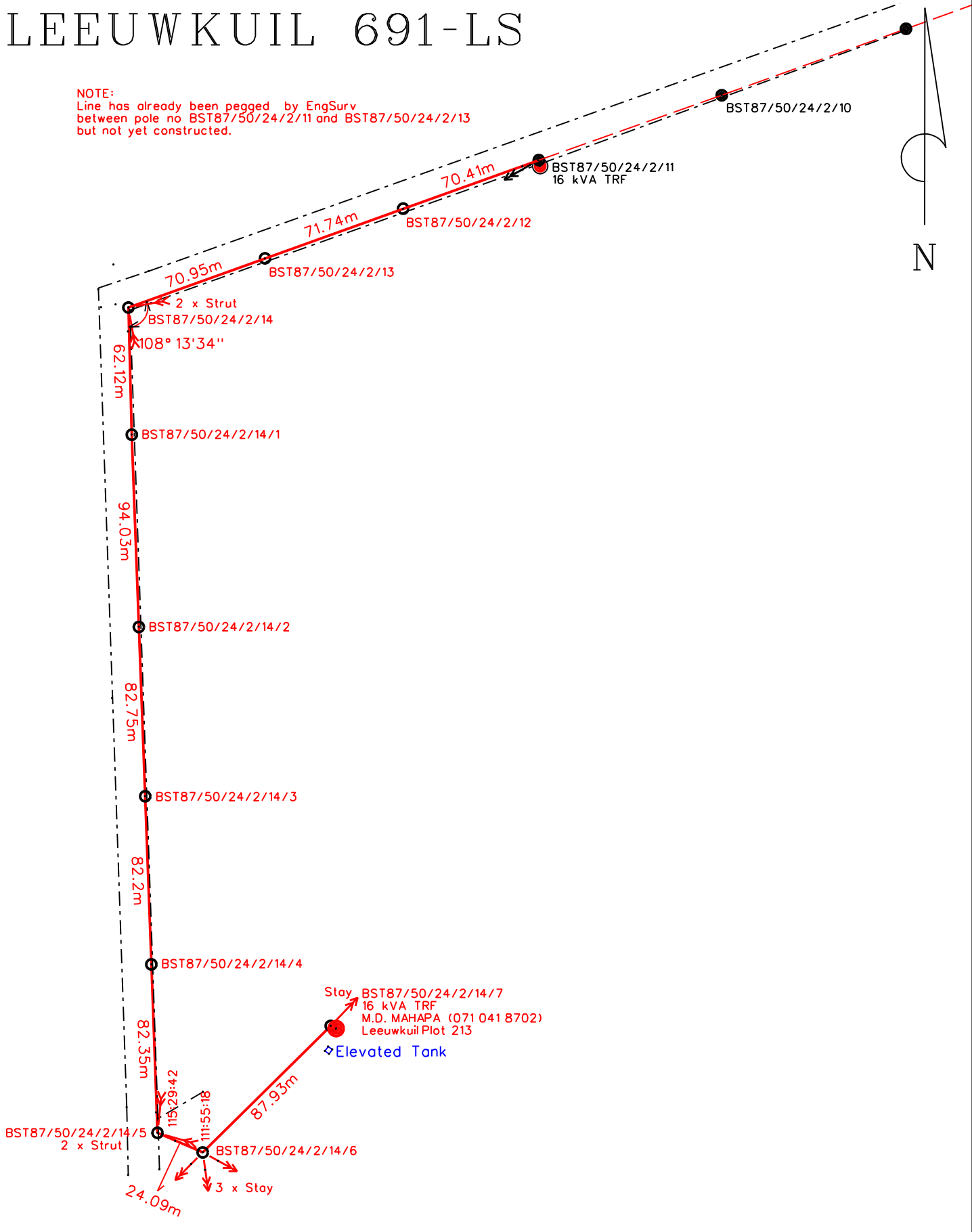


LEEUKUIL 691-LS

NOTE:
Line has already been pegged by EngSurv
between pole no BST87/50/24/2/11 and BST87/50/24/2/13
but not yet constructed.



<p><i>SurvMap cc</i> 2003/085242/23</p>	<p>Tel: 015-297 6850 Fax: 086 659 4192 Cell: 082 933 3223 E-Mail: survmap@telkomsa.net</p>	<p>79 Plein Street POLOKWANE 0699</p>
---	--	---