

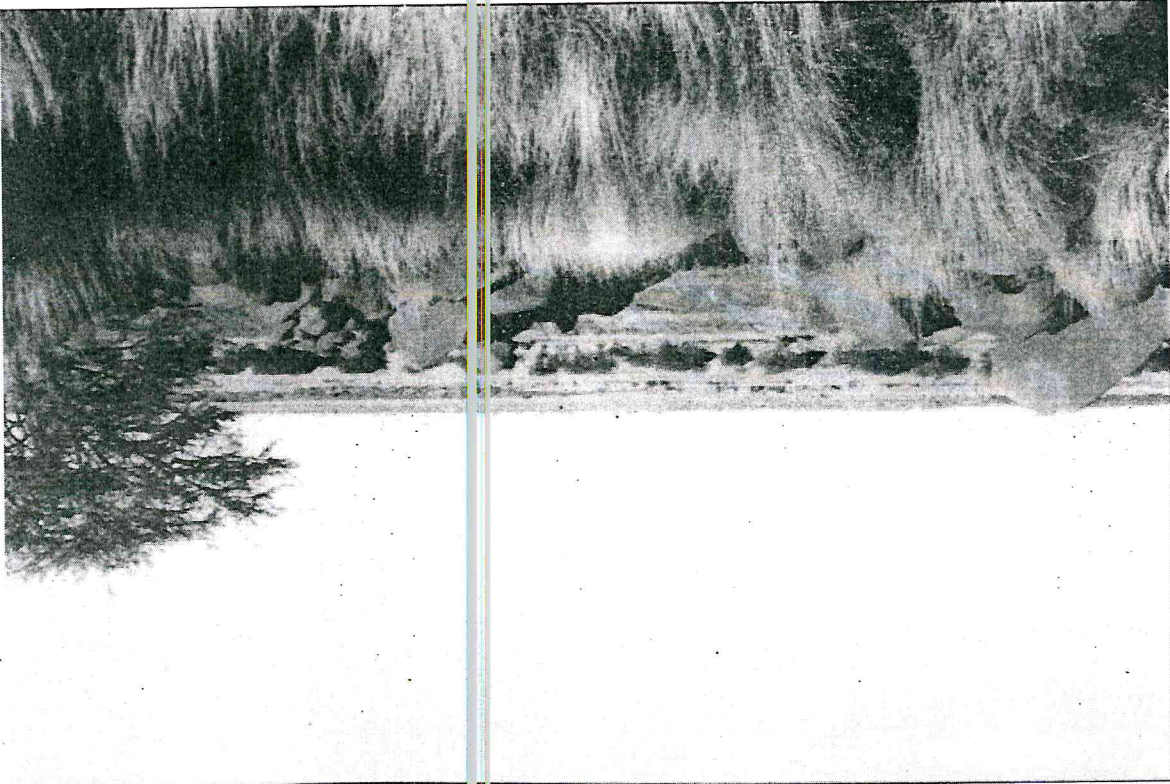
Kgatlagadi Geoservices
P O Box 3390
Diamond Pavilion
8305 Kimberley RSA

Page 1 of 3
1/25/2010

[Prepared for Supermix Group (Pty) Limited / Nootgedaght Mine]

September 2009

John L C Kilham



**NOOTGEDAGHT ALLUVIAL MINE
- GEOLOGICAL DETAILS FOR MINING WORK
PROGRAMME REVISION - September 2009**

CONFIDENTIAL

March 2008

Nootgedaght Alluvial Mine
Note for the Record

Gravel thicknesses vary from <100mm to 250mm, with rare isolated pockets extending to >300mm. The diamondiferous gravels occur in patches of present river area. This area is typical Northern Cape savannah with scattered acacias and grassland established on red Kalahari sandveld.

The estimated diamond-bearing gravel resource is 1,8 million tons.

The gravels typically occur at grades of between 0,1 and 1,0 cph (carats per hundred tons). This locality also has a large diamond population, albeit very rare.

Industrial Minerals

The remaining minerals (or materials), i.e. the alluvial boulders, cobbles, and pebbles that are removed from the mining paddocks as described in the mining techniques employed are also used by Supermix.

During the excavation of the diamondiferous gravels, i.e. the "rookopie", the entire gravel assemblage, apart from the large boulders remaining in the mining paddock form the start of the progressive rehabilitation process. These excavated gravels are then transported to the central treatment plant and steadily fed into the process.

The typical Vaal River gravels consist predominantly of larger quartzites and andesites, with lesser quantities of shales, dolerites, and minor cherts, diamictites and jaspers.

During the diamond extraction process at the treatment plant, the boulders, cobbles, pebbles, and the sand fractions are successively removed as gangue materials not required in the final diamond recovery process. These materials are then removed from the plant stockpiles and put aside for further treatment as industrial products used in various other Supermix ventures i.e. the construction industry.

1st September 2009

John L C Kilham
 M.Sc (geology) Pr.Sci.Nat.
Kgalagadi Geoservices
Kimberley.

Kgalagadi Geoservices
 P O Box 3390
 Diamond Pavilion
 8305 Kimberley RSA