

Results of Magnetometry Survey at Kuruman Moffat Mission in September 2017

*Prepared by David Redhouse
University of Cambridge*

A number of areas at the Kuruman Moffat Mission site were surveyed in September 2017.

Surveys in areas 1 and 2 adjacent to the mission church and the Moffat house were impacted by shallow soil and the underlying ferrous geology of the site.

Areas 3, 4 & 5 show some potential points of interest, but are hard to interpret, again due to the underlying geology.

Of greatest significance in terms of the magnetometry results is the larger scale survey undertaken at area 6, a field on the other side of the river, in the grounds of Seodin Laerskool (where the alluvial soil makes magnetometry more suitable).

The grey areas indicate areas/points that were unsurveyed due to obstacles/building.

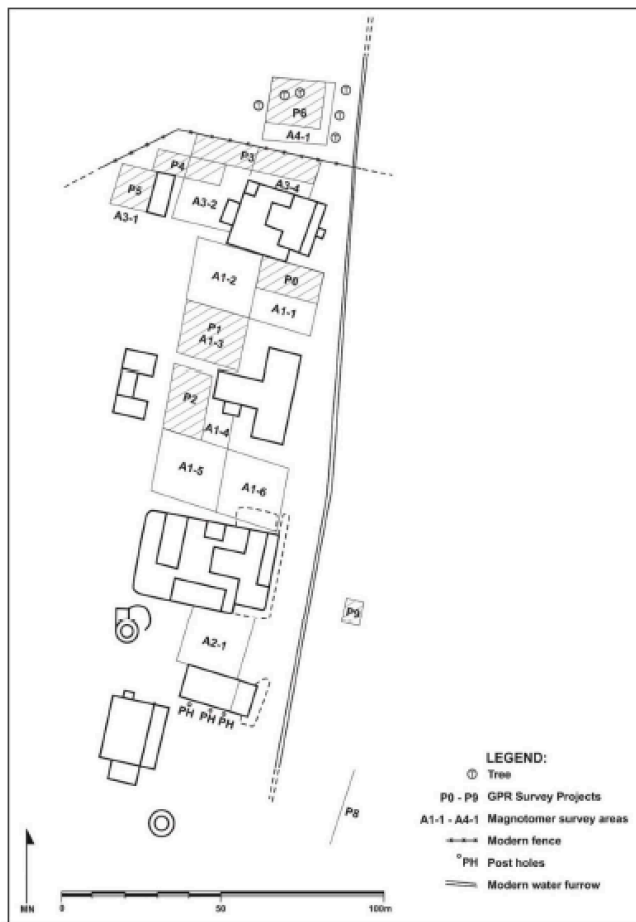


Figure 1 Sketch map of areas surveyed at KMM

Area 1: A1-1-6 on sketch map

Area to back and sides of mission church. This mostly appears to show the geology. It is potentially significant that the top right corner, is much quieter, suggesting perhaps a greater depth of soil. Historic maps have suggested historic structures in this area and ground penetrating radar appears to show sub-surface features.

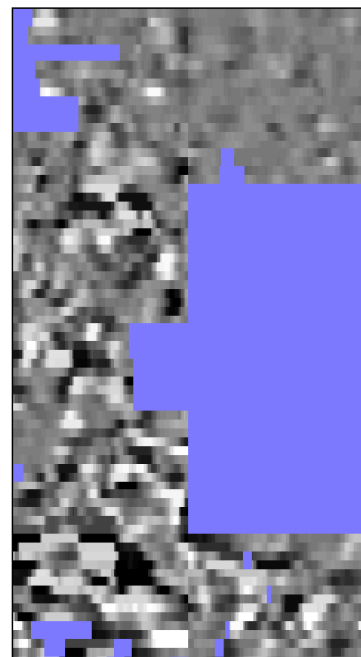


Figure 2 Area 1

Area 2: A2-1 on sketch map

Between the church and Moffat House. Mostly representative of the geology, also with greater depth of soil towards the mission garden area.

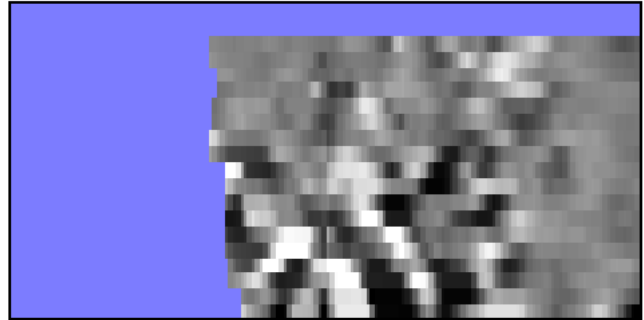


Figure 3 Area 2

Area 3: A3-1-4 on sketch map

Behind the Hamilton House. Areas of potential interest in the sections to the left, which support findings from the ground penetrating radar study suggesting sub-surface structures.

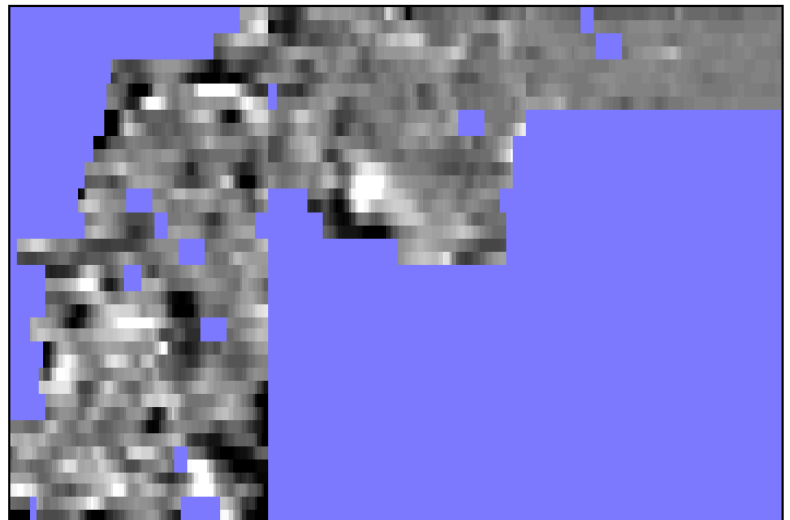


Figure 4 Area 3

Area 4: A4-1 on sketch map

Conducted in area where Chapman trading store was located. Fairly unclear but with some potential points of interest.

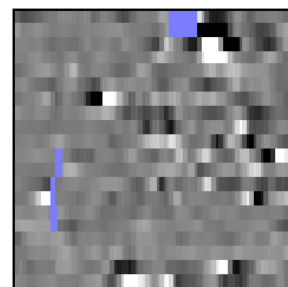


Figure 5 Area 4

Area 5: A5 on sketch map

The back yard of the Hamilton House. This mostly indicates the location of a cess pit

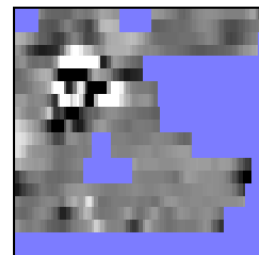


Figure 6 Area 5

Area 6: Location adjacent to intersection with Seodin Road, shown on Google Earth Image



Figure 7 Location of Area 6

Field on the other side of the river from Kuruman Moffat Mission, at the corner of Seodin Road, where historic maps indicated a historic African village. It is now the property of the Seodin Laerskool and is adjacent to the Principal's house, which originally formed part of the Moffat Institution – remains of which are indicated on the plan. The survey results appear to show two trapezoidal structures as positive anomalies towards the top right. Surface scatters of 19th century transfer print ceramics in the field suggest it warrants further archaeological investigation through field survey and targeted excavation.

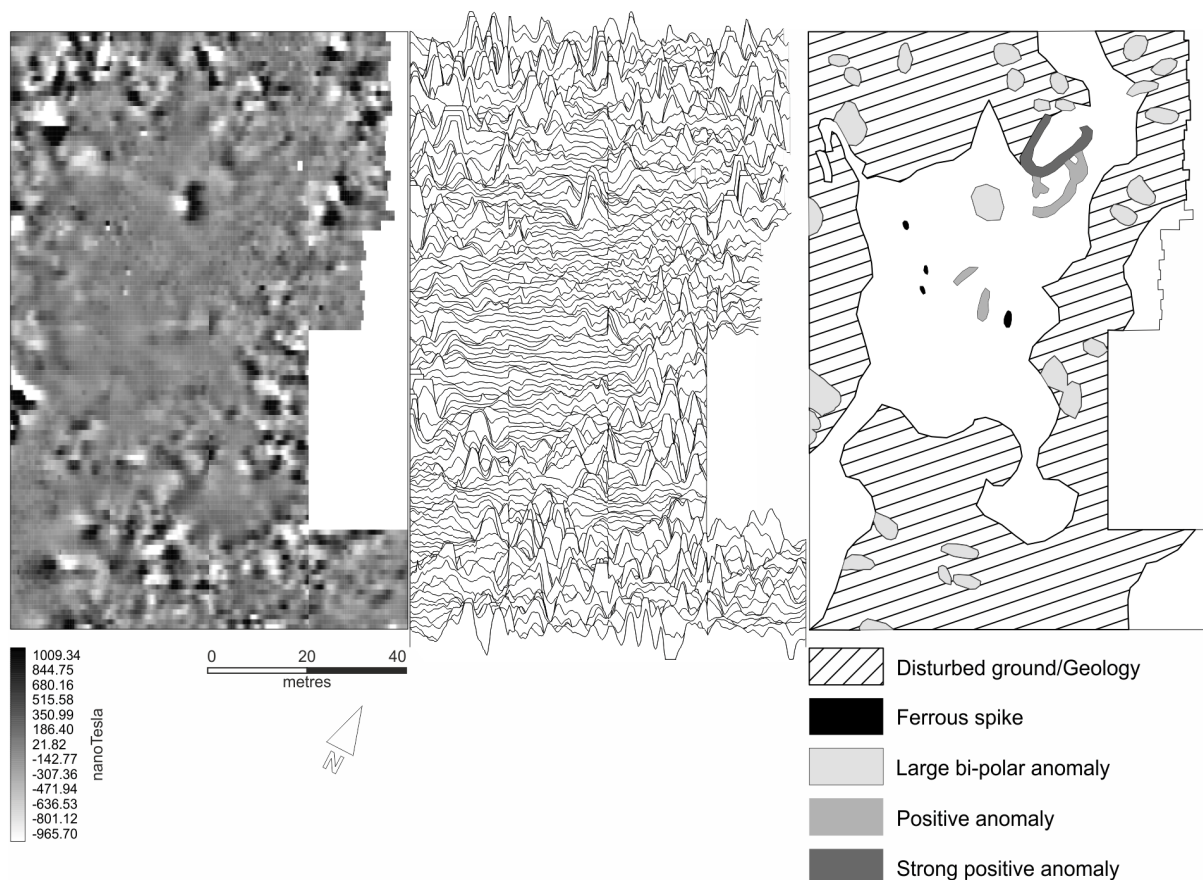


Figure 8 Area 6