

# Proposed Waste Disposal Site, Eskom Majuba Power Station, Amersfoort, Mpumalanga Province

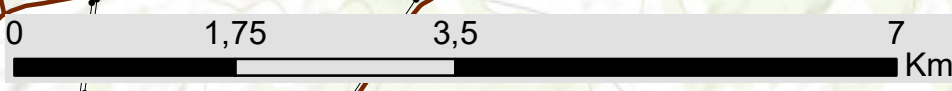
## Locality Map

### Legend

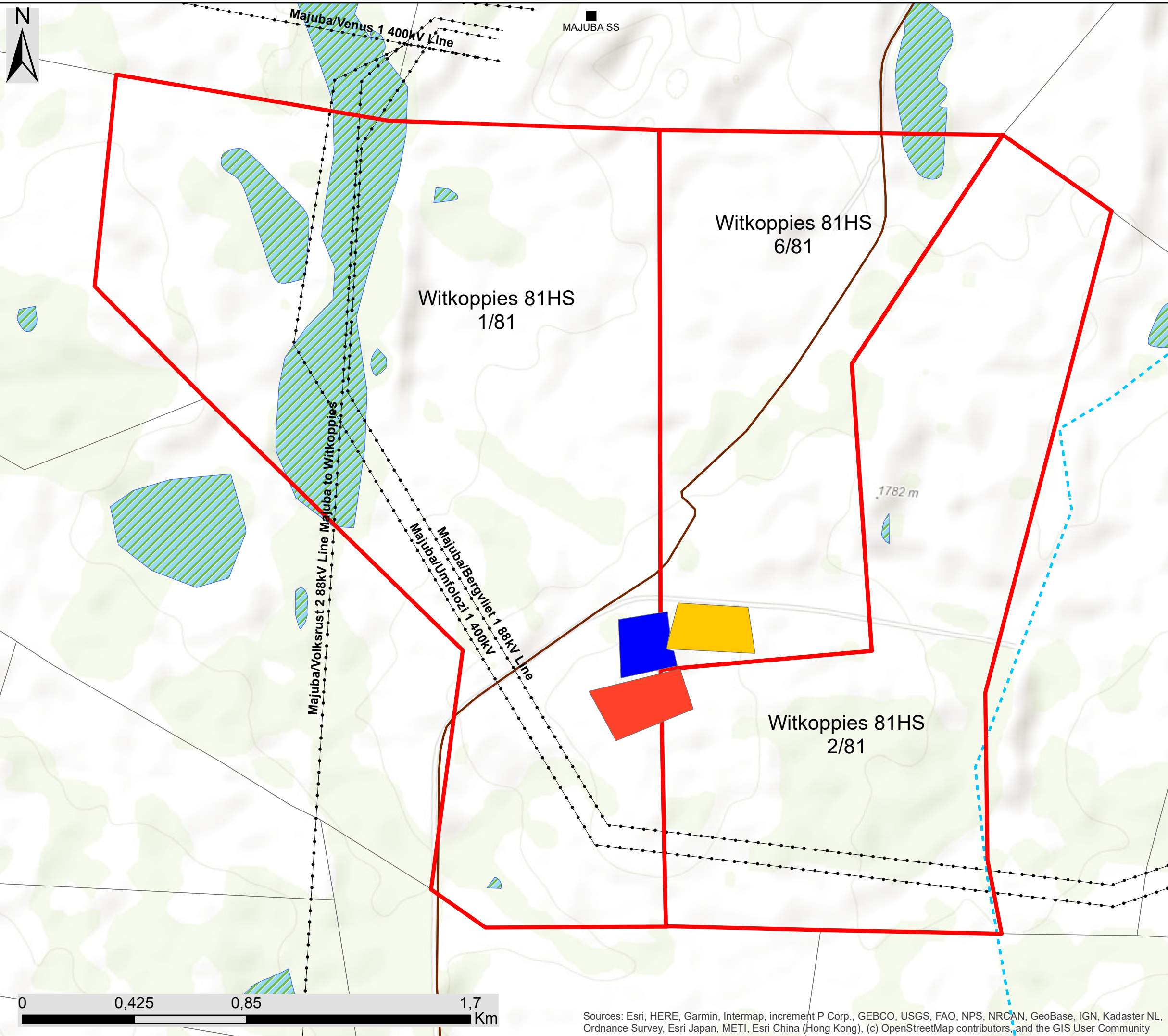
- Towns
- Eskom Substation
- .-.- Existing Power Line
- Main Road
- National Road
- Regional Road
- - - Non-Perennial River
- Project Site
- Waste Disposal Development Area Alternatives



Scale: 1: 95 023  
 Projection: WGS\_1984  
 Map Ref: Waste Disposal - Eskom Majuba REF - Locality



Sources: Esri, HERE, Garmin, Intermap, increment P Corp., GEBCO, USGS, FAO, NPS, NRCAN, GeoBase, IGN, Kadaster NL, Ordnance Survey, Esri Japan, METI, Esri China (Hong Kong), (c) OpenStreetMap contributors, and the GIS User Community



**Proposed Waste Disposal Site,  
Eskom Majuba Power Station,  
Amersfoort, Mpumalanga Province**

Layout Map

**Legend**

- Eskom Substation
- Existing Power Line
- Main Road
- - - Non-Perennial River
- ▨ NFEPA Wetlands
- Farm Portions

**Layout**

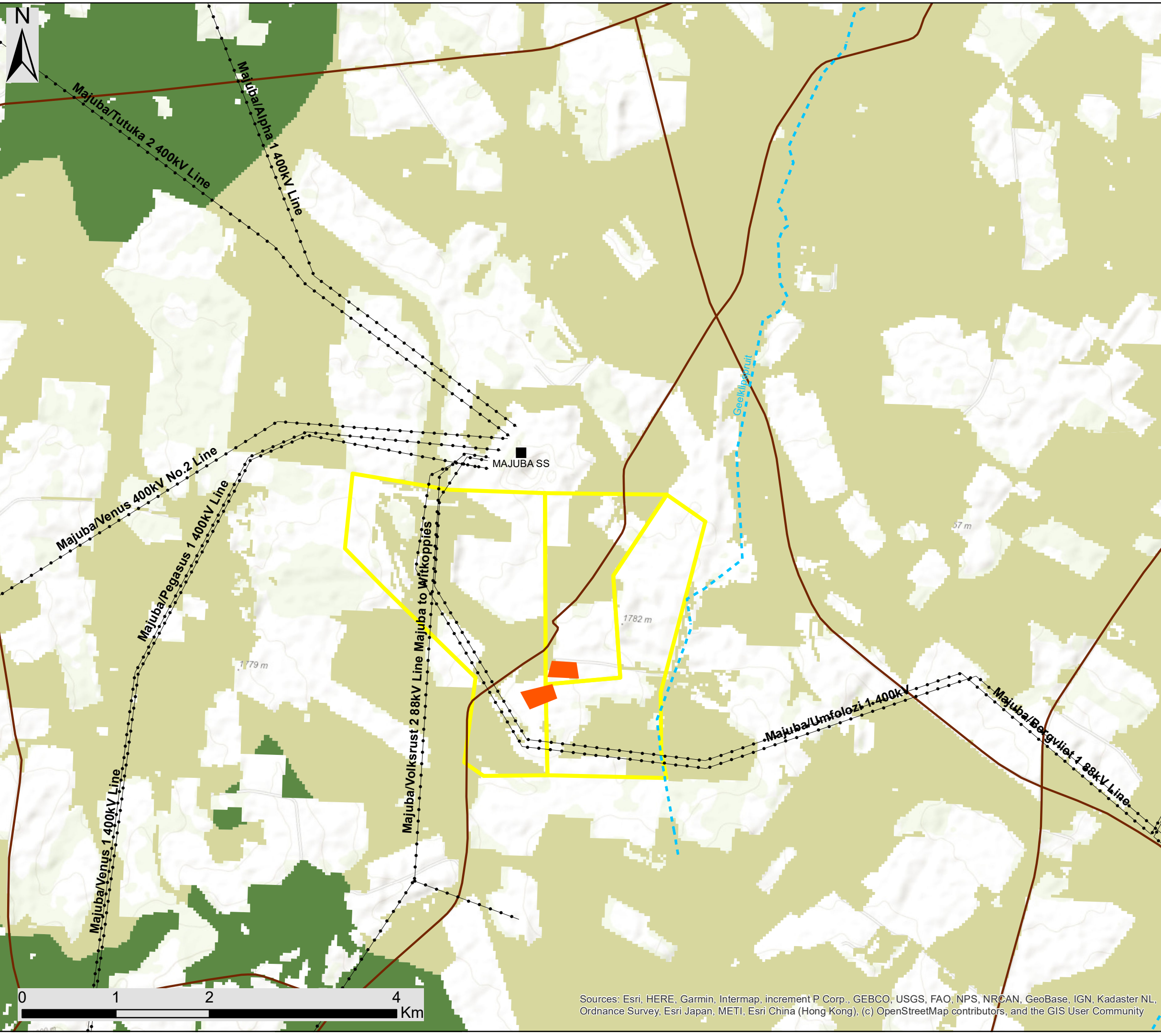
- ▨ Alternative A
- ▨ Alternative B
- ▨ Existing Landfill
- ▭ Project Site



Scale: 1: 13 789  
 Projection: WGS 1984  
 Map Ref: Waste Disposal - Eskom Majuba REF - Layout



Sources: Esri, HERE, Garmin, Intermap, increment P Corp., GEBCO, USGS, FAO, NPS, NRCAN, GeoBase, IGN, Kadaster NL, Ordnance Survey, Esri Japan, METI, Esri China (Hong Kong), (c) OpenStreetMap contributors, and the GIS User Community



**Proposed Waste Disposal Site,  
Eskom Majuba Power Station,  
Amersfoort, Mpumalanga Province**  
Vegetation Map  
(NBA - Remaining Vegetation)

**Legend**

- Towns
- Eskom Substation
- Existing Power Line
- Main Road
- National Road
- Regional Road
- Non-Perennial River
- Project Site
- Waste Disposal Development Area Alternatives

**Vegetation Type**

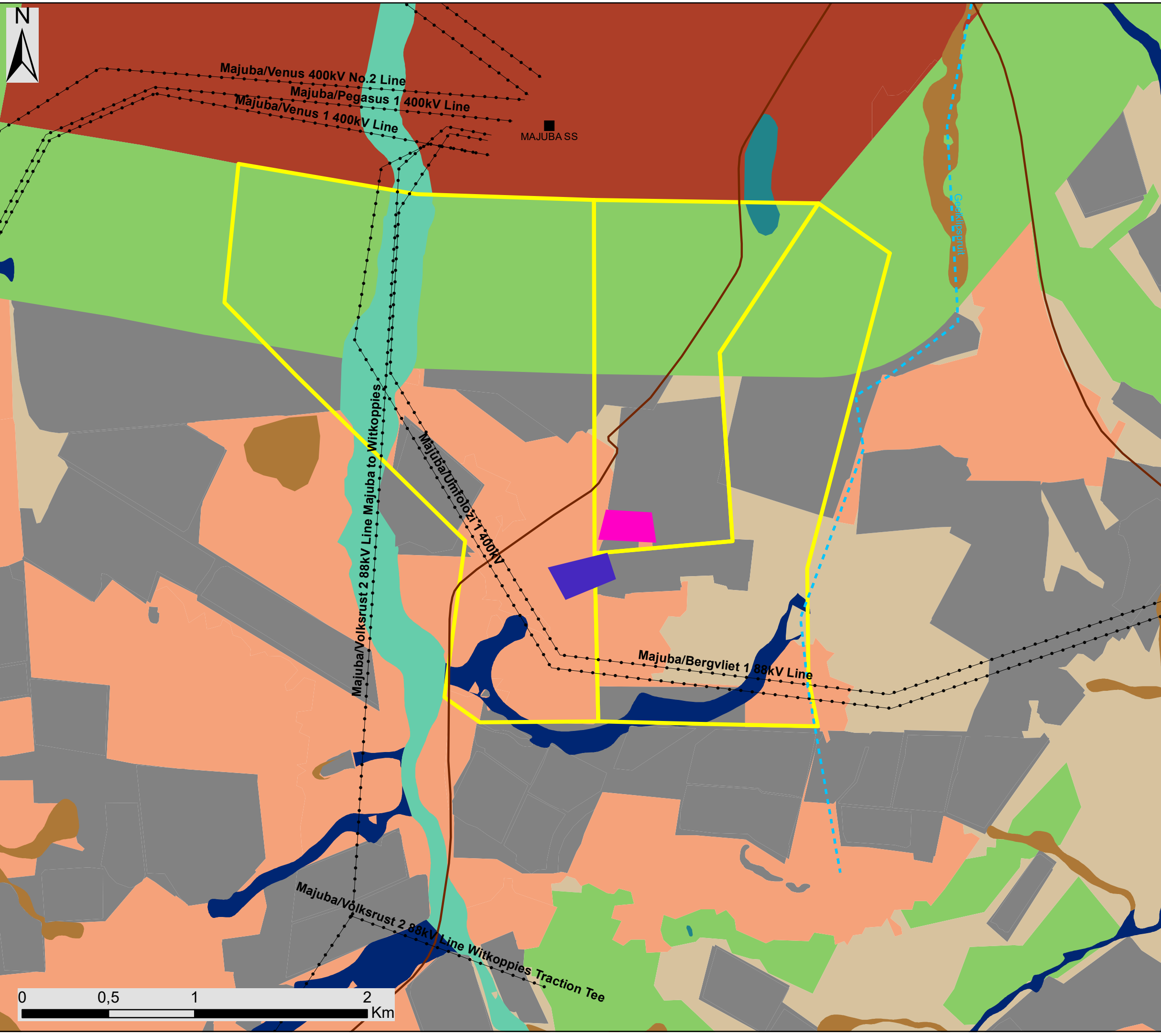
- Amersfoort Highveld Clay Grassland (Least Concern)
- Soweto Highveld Grassland (Vulnerable)



Scale: 1: 95 023  
Projection: WGS\_1984  
Map Ref: Waste Disposal - Eskom Majuba - Veg



Sources: Esri, HERE, Garmin, Intermap, increment P Corp., GEBCO, USGS, FAO, NPS, NRCAN, GeoBase, IGN, Kadaster NL, Ordnance Survey, Esri Japan, METI, Esri China (Hong Kong), (c) OpenStreetMap contributors, and the GIS User Community



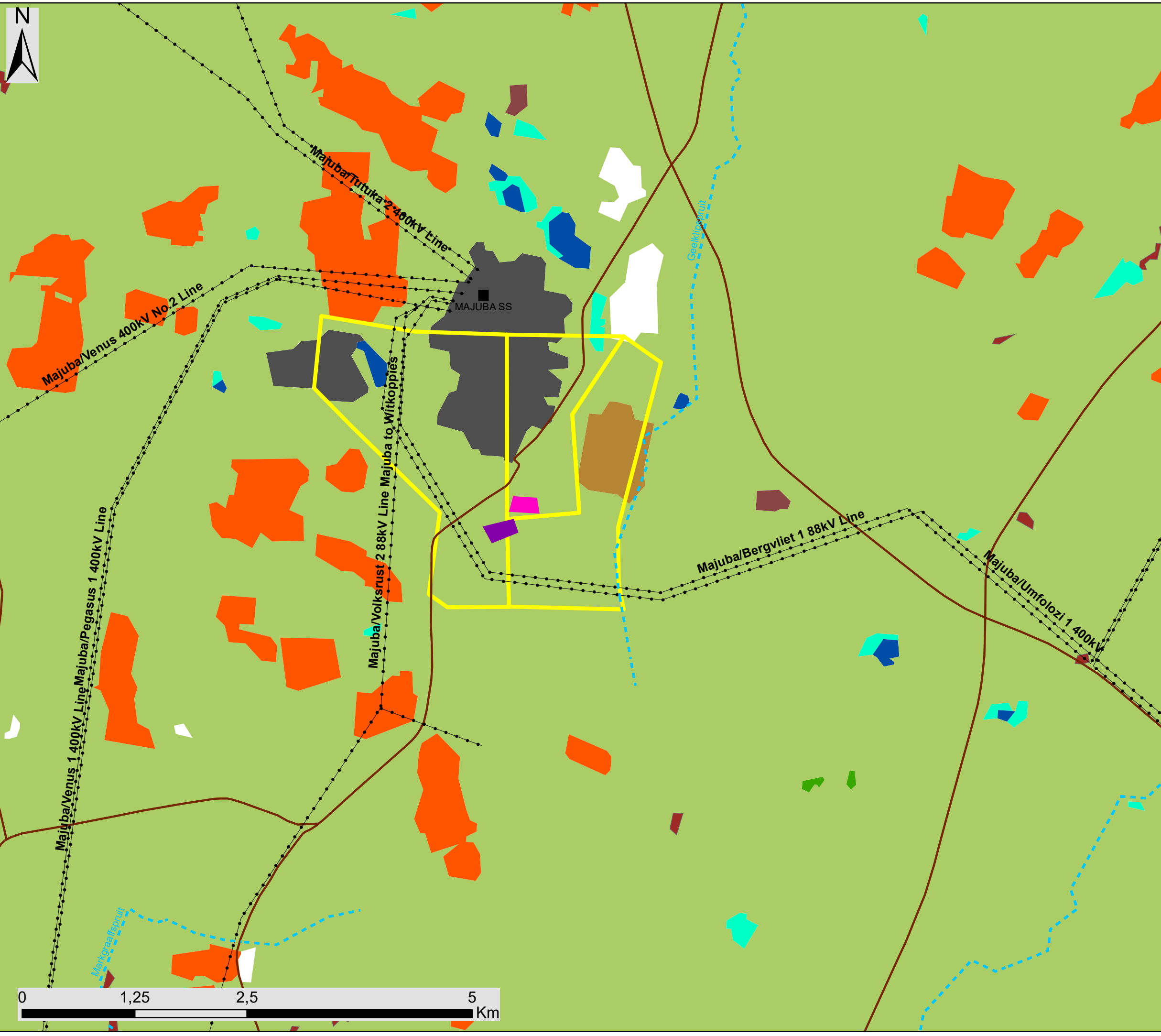
# Proposed Waste Disposal Site, Eskom Majuba Power Station, Amersfoort, Mpumalanga Province

## CBA & Sensitive Areas Map

- Legend**
- Towns
  - Eskom Substation
  - - - Existing Power Line
  - Main Road
  - National Road
  - Regional Road
  - Non-Perennial River
  - Project Site
  - Waste Disposal Area - Alternative A
  - Waste Disposal Area - Alternative B
- NBA - Wetlands**
- Depression Wetland
  - Floodplain
  - Seep Wetland
  - Valley Bottom Wetland
- MBSP - Critical Biodiversity Areas**
- Critical Biodiversity Area
  - Ecological Support Area
  - Heavily or moderately modified
  - Other Natural Areas
  - Protected Areas

Scale: 1: 95 023  
 Projection: WGS 1984  
 Map Ref: Waste Disposal - Eskom Majuba - Sens





# Proposed Waste Disposal Site, Eskom Majuba Power Station, Amersfoort, Mpumalanga Province

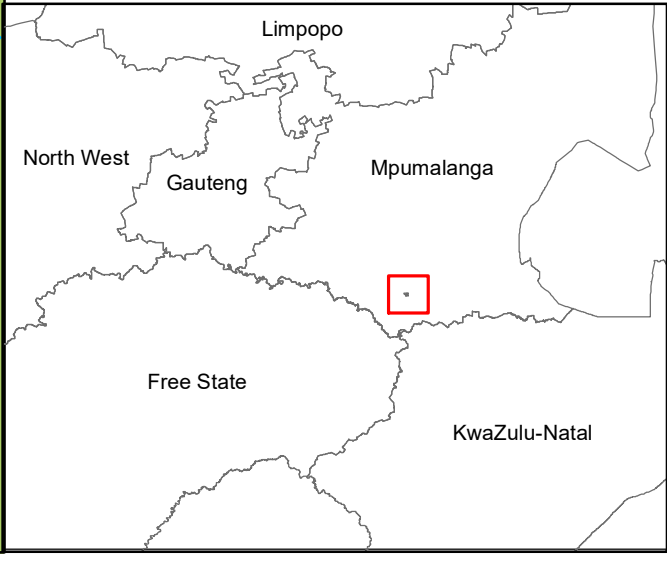
## Land Cover Map

- Legend**
- Eskom Substation
  - Existing Power Line
  - Main Road
  - Project Site
  - Waste Disposal Area - Alternative A
  - Waste Disposal Area - Alternative B
- Land Cover**
- Cultivated, temporary, commercial, dryland
  - Forest Plantations (Pine spp)
  - Mines & Quarries (mine tailings, waste dumps)
  - Mines & Quarries (surface-based mining)
  - Thicket, Bushland, Bush Clumps, High Fynbos
  - Unimproved (natural) Grassland
  - Urban / Built-up, (industrial / transport : heavy)
  - Waterbodies
  - Wetlands



savannah  
environmental

Scale: 1: 95 023  
Projection: WGS\_1984  
Map Ref: Waste Disposal - Eskom Majuba REF - Land Cover





**Proposed Waste Disposal Site,  
Eskom Majuba Power Station,  
Amersfoort, Mpumalanga Province**

Sensitivity Map

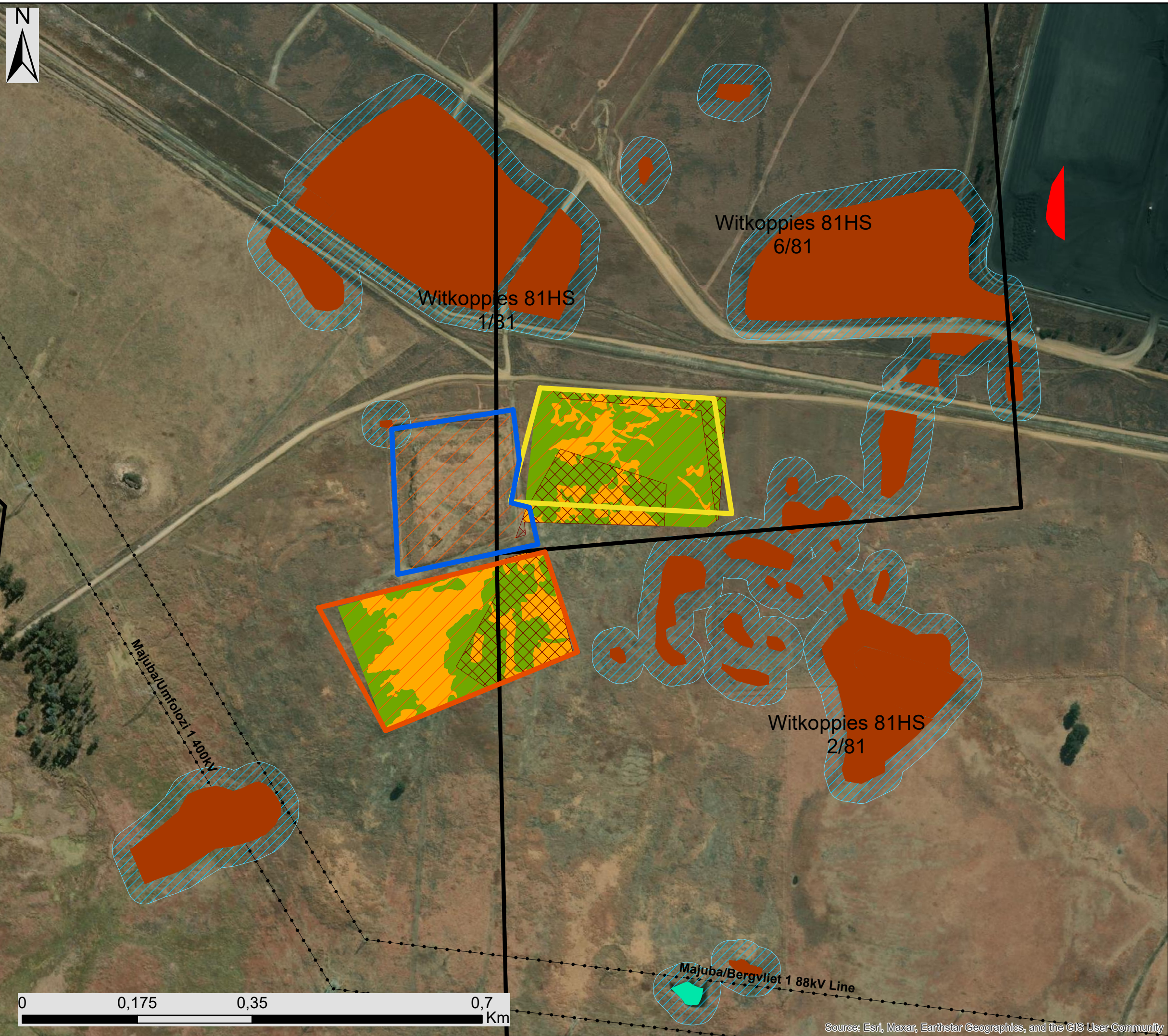
**Legend**

- Existing Power Line
- NFEPA Wetlands
- Short Grassland (Medium Sensitivity)
- Secondary Grassland (Low Sensitivity)
- Farm Dam
- Seep - Permanent and Seasonal
- Majuba Wetland Buffer (30m)
- Critical Biodiversity Area, CBA Irreplaceable
- Heavily or Moderately Modified

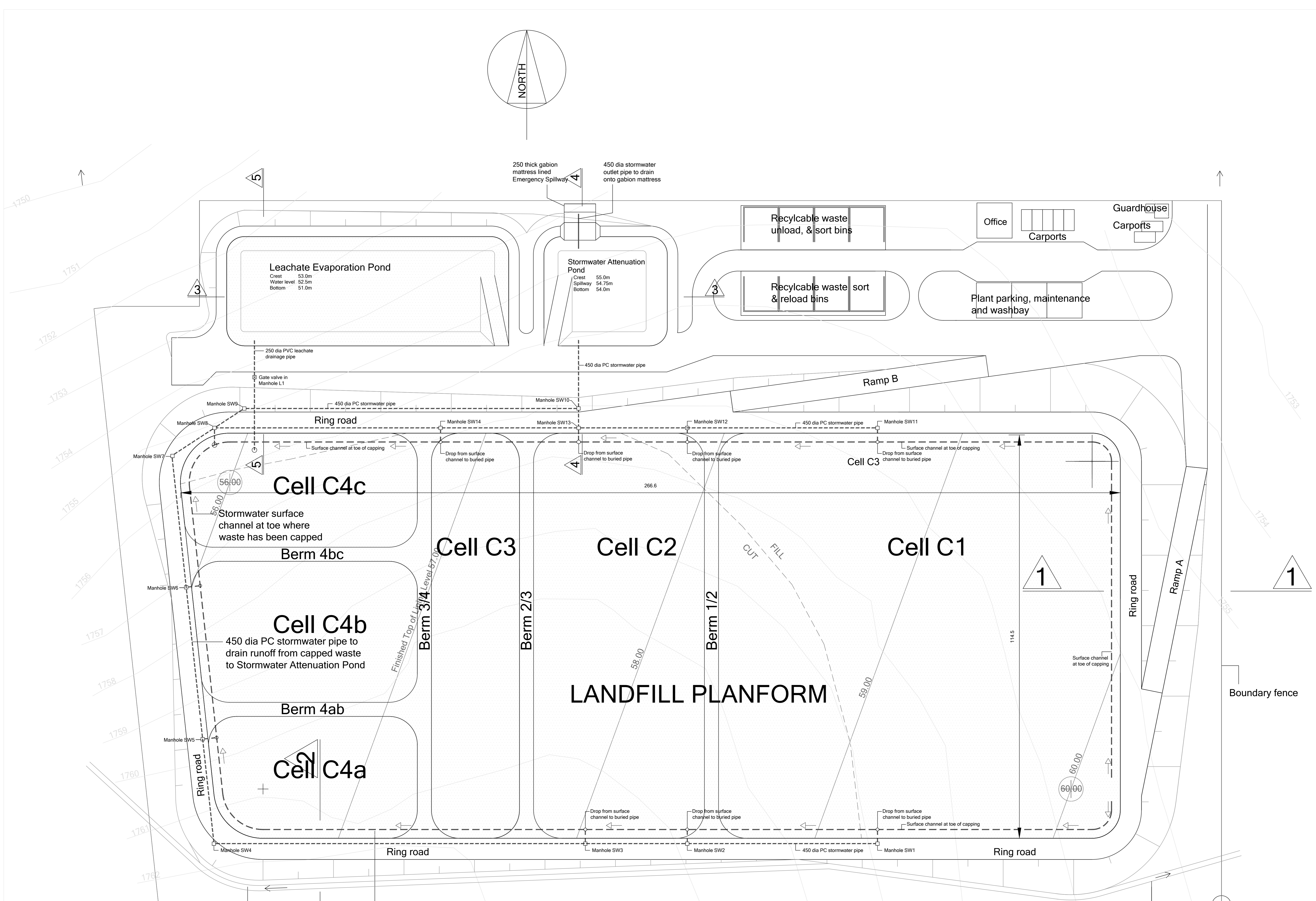
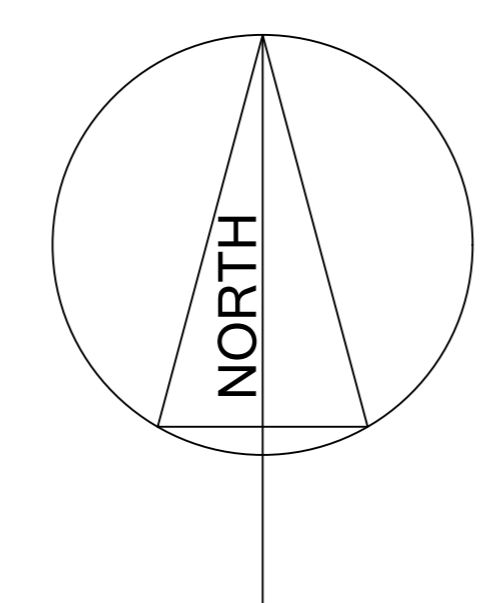
**Layout**

- Alternative A
- Alternative B
- Existing Landfill
- Project Site

Scale: 1: 13 789  
Projection: WGS 1984  
Map Ref: Waste Disposal - Eskom Majuba Sensitivity map

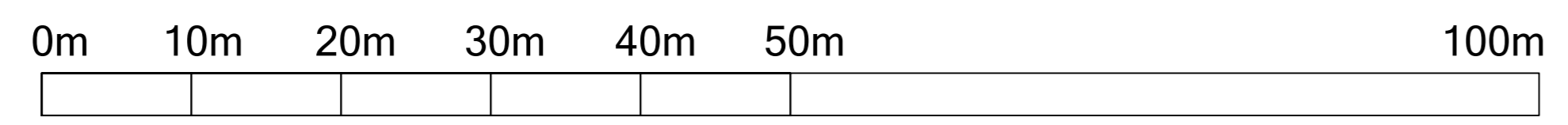


Source: Esri, Maxar, Earthstar Geographics, and the GIS User Community



**PRELIMINARY  
FOR ESKOM  
CONSIDERATION**

The Employer 	
Project <b>NEW GENERAL WASTE DISPOSAL FACILITY AT MAJUBA POWER STATION</b>	
Drawing Title <b>GENERAL ARRANGEMENT</b>	
Drawing Number wsm-maj-01	Revision D
Date 16 March 2022	



**PLAN**

Cells C1 to C4 to be landfilled in sequence. Cells being landfilled to be separated from unfilled area by temporary internal berms that are to be removed for reuse of the soil fill as landfilling is extended to cover their locations.

NO.	DATE	BY	CHKD BY	APP BY	REVISION	RESERVE DRAWING
APPROVED BY: _____ AUTHORIZED BY: _____ ESKOM HOLDINGS LTD. 2002/01/02/06						
DRAWN BY: _____ SCALE: _____						REV. _____