



Tshedza Mining Resources (Pty) Ltd

a subsidiary of Mbuyelo Coal (Pty) Ltd

To whom it may concern

Grave relocation on the farms Weilaagte 271 IR and Welgevonden 272 IR

This letter serves as a motivation for the planned grave relocation at Tshedza Mining Resources (Pty) Ltd: Manungu Colliery.

Tshedza Mining Resources (Pty) Ltd: Manungu Colliery has an approved Mining Right in respect of coal reserves on the farms Weilaagte 271 IR and Welgevonden 54 IT, located approximately 10 km southwest of Delmas and 2.8 km north of Devon. Manungu Colliery has been in operation since 2015 and intends to expand its opencast mining footprint. The grave relocation is necessary to allow for the aforesaid expansion. Attached is the Life of Mine layout showing the current and future expansion as well as the location of the graves in question.

The grave relocation areas are marked site 3, 4 and 5 on the attached layout. The total of 158 graves to be relocated was confirmed by African Grave Relocation Specialist, whom is the appointed service provider for the grave relocation project.

The coordinates of the grave sites are as follows:

Location	Latitude	Longitude
Site 3	26°13'55.93" S	28°41'54.48"
Site 4	26°14'00.54" S	28°42'03.15"
Site 5	26°14'31.74" S	28°42'01.07"

The Cultural and Heritage Assessment was undertaken in 2013 prior to the commissioning of the operations. A number of graves were identified some of the graves were fenced off prior to the current mining as per recommendation in the report.

The future open cast mining will produce No. 2 seam coal for Eskom Market and it will be impractical to mine this coal without relocating the graves.

Furthermore, the location of the graves on top of the coal reserve will bring the following challenges.

Mining restrictions: mining activities are quite dynamic. This involves quick changes in a short period of time to suit operations. Haul road moves frequently and dumping



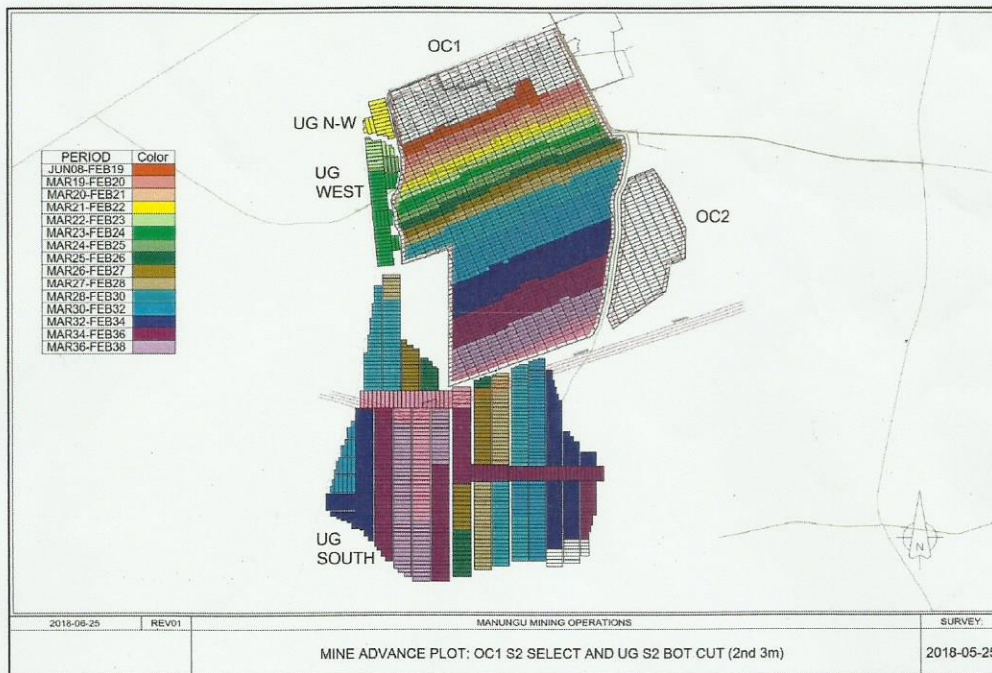
points are decided on financial sense. An operation of this nature needs no restriction for ultimate safety and profit of the business.

Blasting Activities: blasting form an integral part of the mining cycle of the operation. Blasting by nature involves fly rocks. These are rock elevated by the blast force. These rocks are brought down to the surface by the gravitational force at a very high speed and have the potential to damage whatever is in their radius. Graveyards are dignified and for that has to be moved from that sort of line of damage.

Access: it is a norm or/and a believe to some to visit graveyards often. With the graveyards right into the operation it will be difficult for one to come in and out as they wish due to the strict and highly regulated laws governing mine safety.

Coal qualities: the grave area encompasses the blocks of good quality coal which makes it the target area for the operation.

Based on the recent scheduling report the area will be mined in the year 2025, however with the increased of volumes it is most likely to be before the scheduled period see the figure below (the circle shaded with purple depicts the graveyard area).



**General Manager
Manungu Colliery**