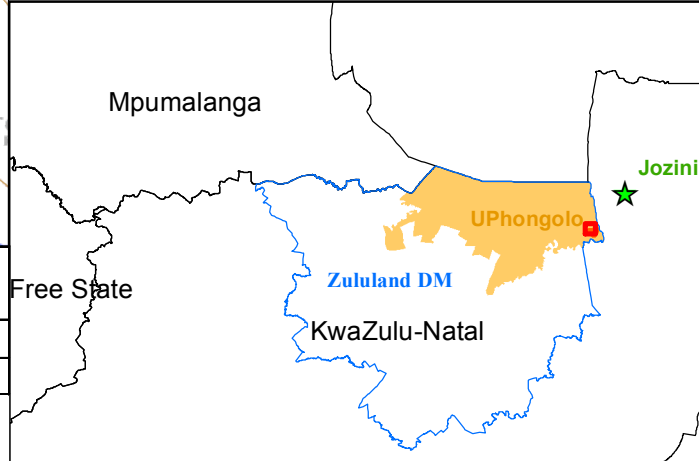
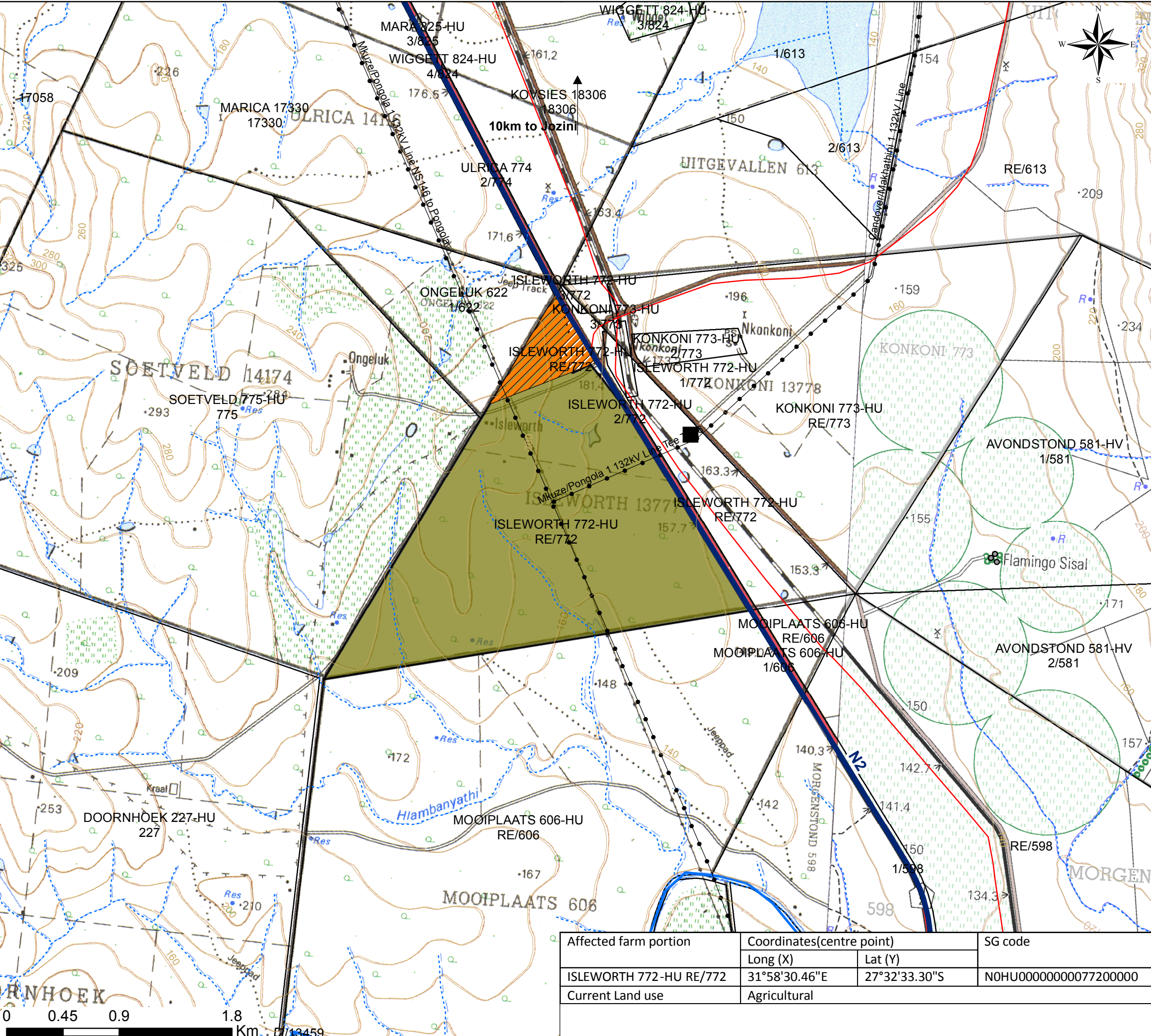


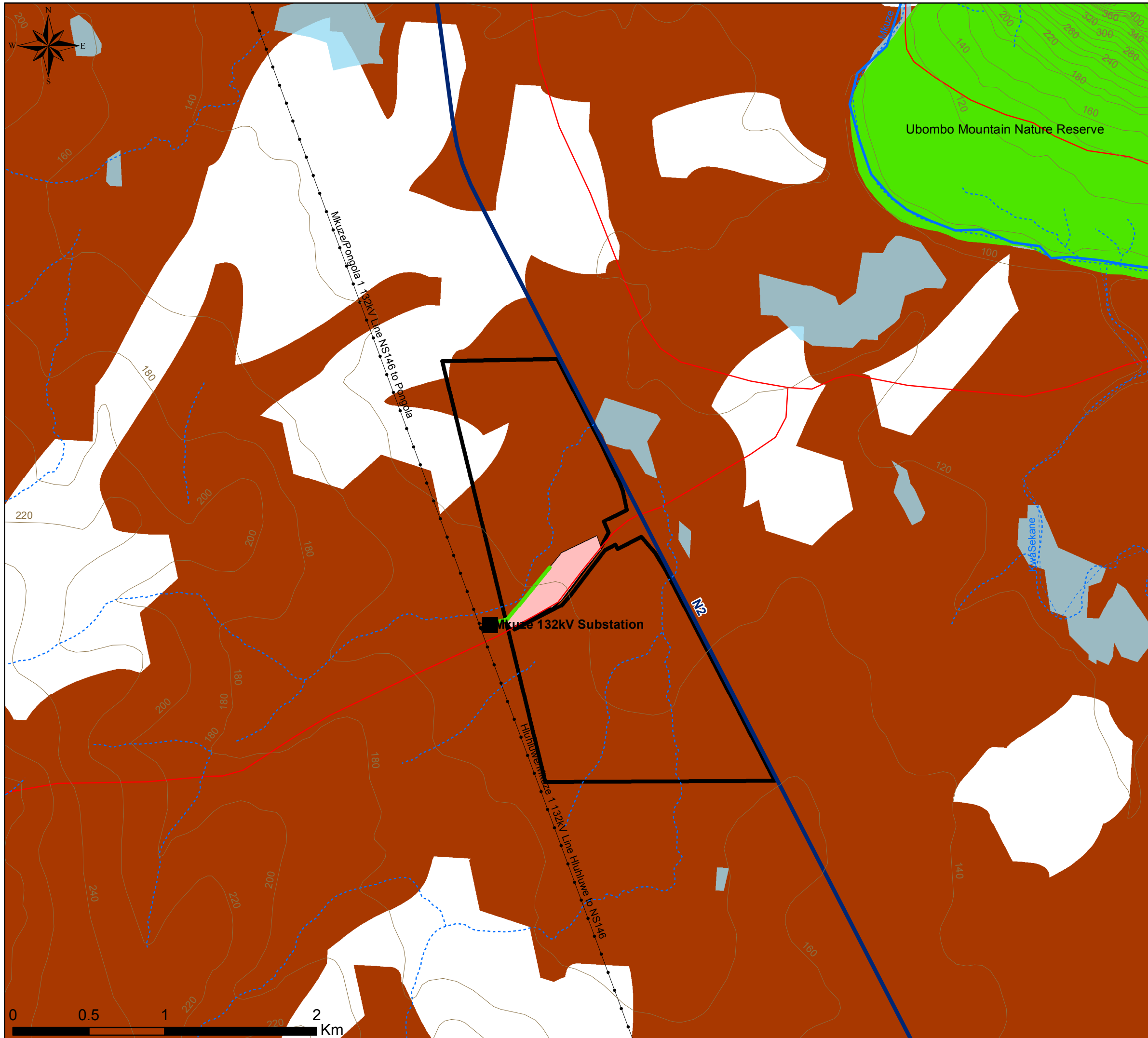
# Senekal 1 Solar Energy Facility: Locality Map

## Legend

- Homestead/farm residence
- Silo substation
- Contours (20m)
- Existing power line
- National route
- Main road
- Perrenial river
- - - Non-perennial river
- ▨ Project area
- Farm Portion



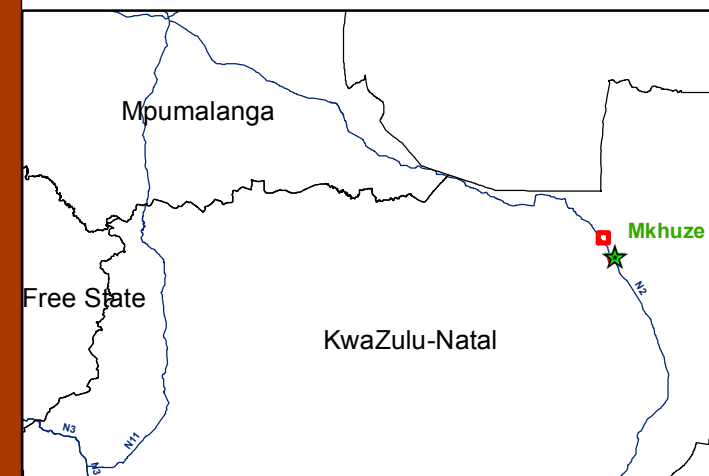
Affected farm portion	Coordinates(centre point)		SG code
	Long (X)	Lat (Y)	
ISLEWORTH 772-HU RE/772	31°58'30.46"E	27°32'33.30"S	N0HU0000000077200000
Current Land use	Agricultural		

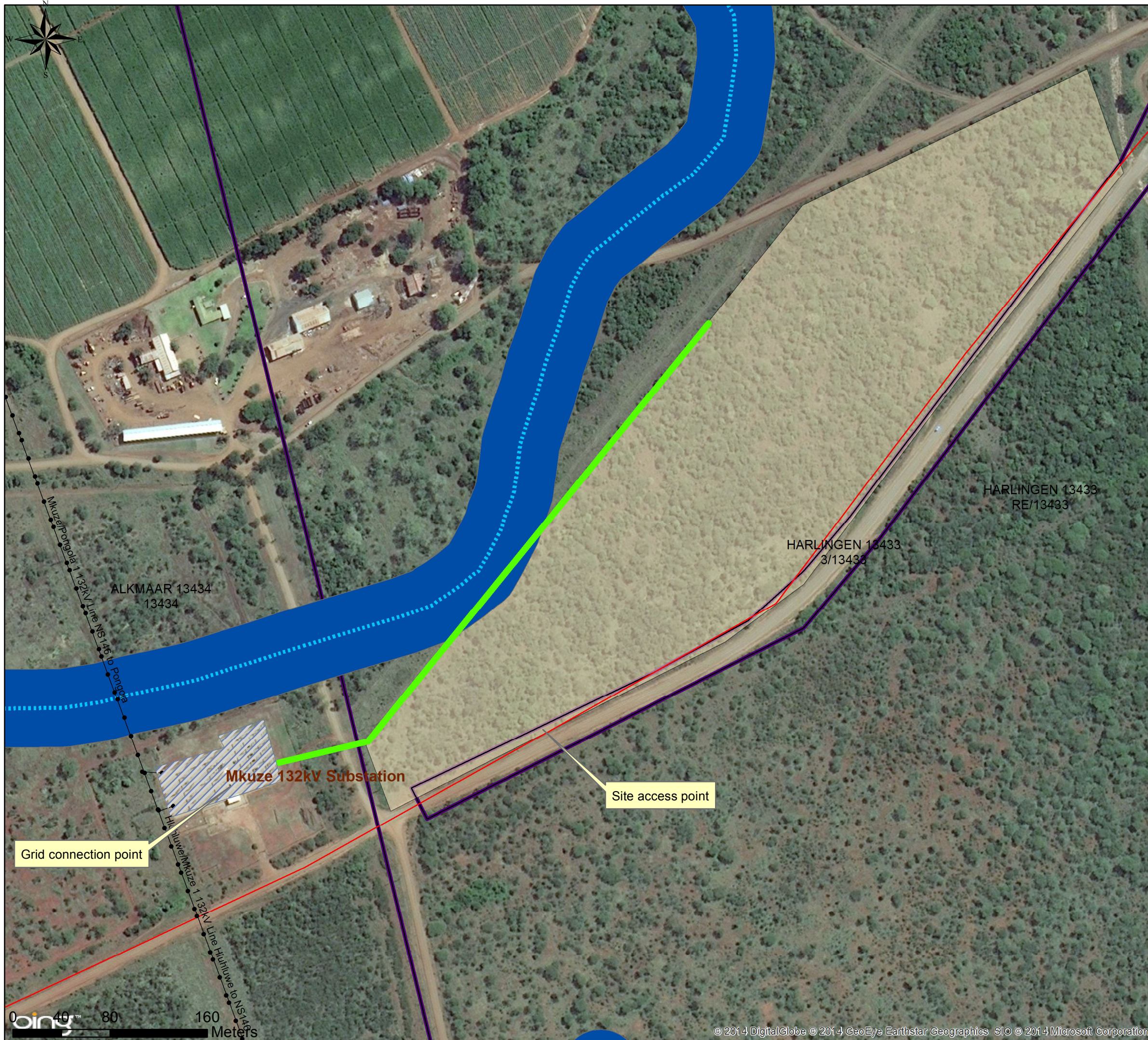


# Senekal 2 Solar Energy Facility: CBA Map

## Legend

- Distribution substation
- Existing power line
- National route
- Main road
- Perrenial river
- Non-perennial river
- Proposed power line
- Farm Portion
- 5MW PV area
- Wetlands
- Protected areas
- Critical Biodiversity Area 1





## Senekal 2 Solar Energy Facility:

Watercourses with a 32m buffer confirmed within the study area

### Legend

- Existing power line
- Perennial river
- Non-perennial river
- Main road
- Watercourses with a 32m buffer
- Project site
- Distribution substation

### Senekal 2 Layout:

- Overhead power line
- 5MW PV area

