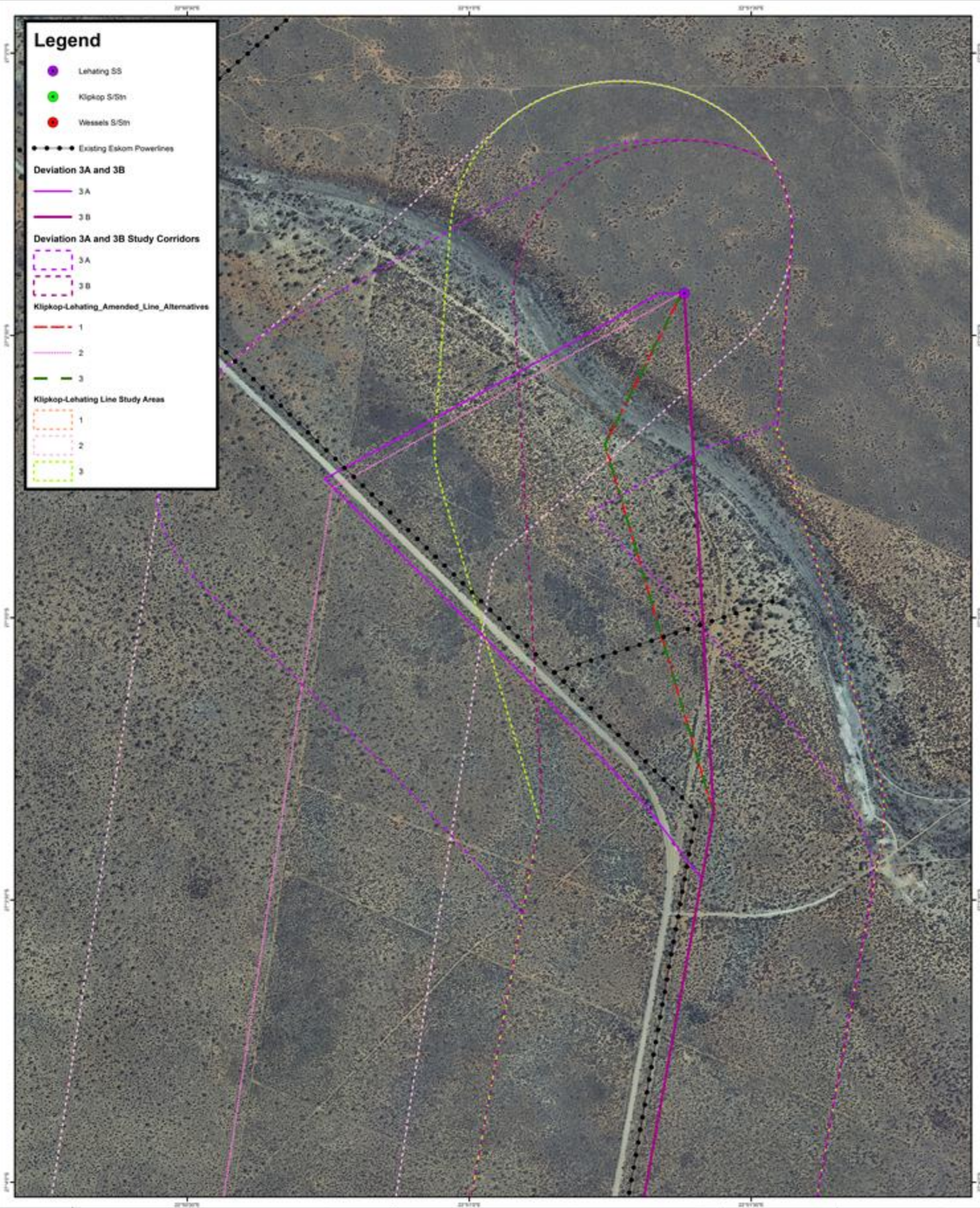


Appendix A: Maps

Eskom Proposed Klipkop-Lehating 132 kV Powerline: Alternative Powerline Route Map



Datum: WGS84
Spheroid: WGS84
Projection: Deg Min Sec

J&G Project 3909
Project name: Eskom Lehating Project
Date: 23/07/2015

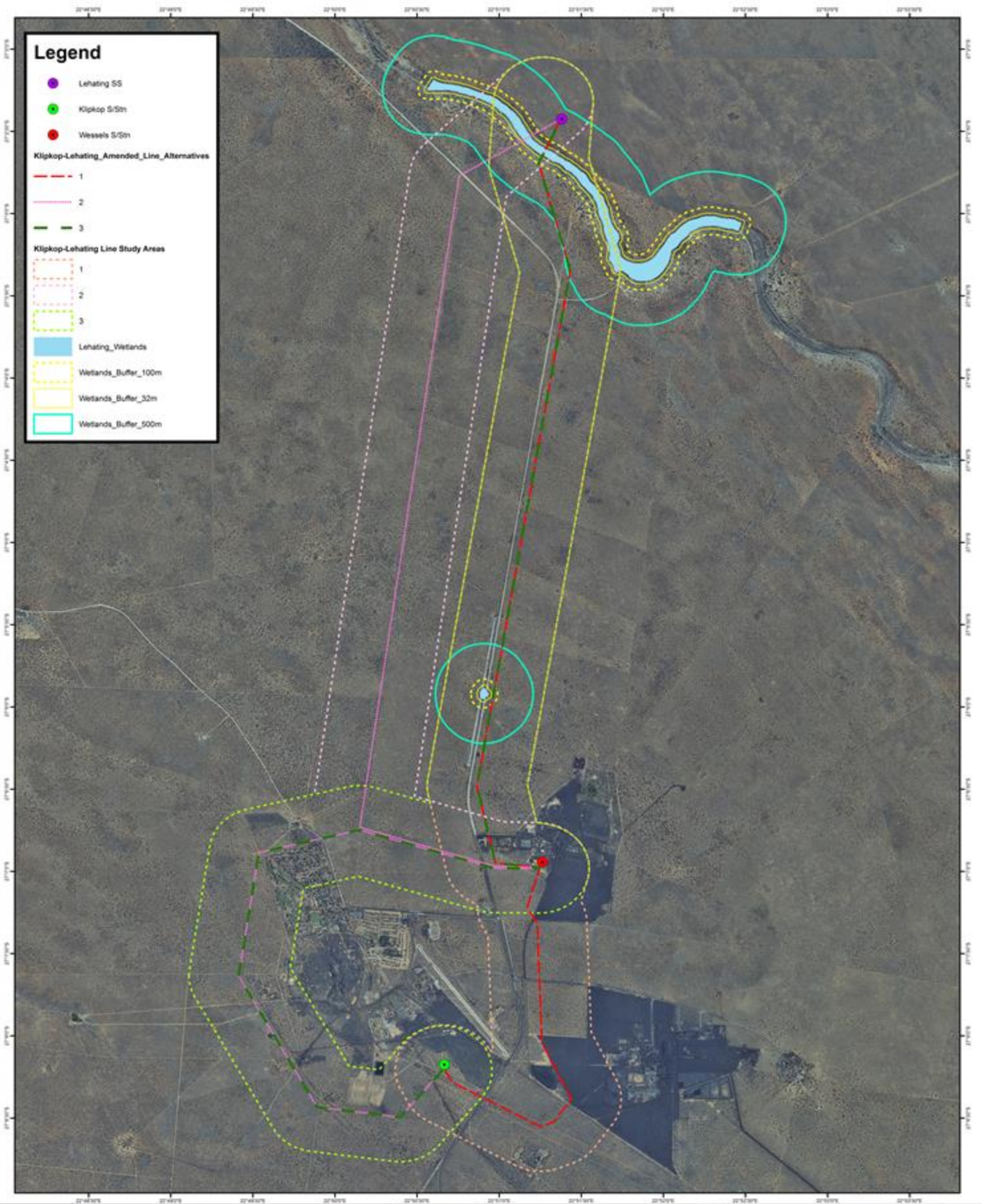
Source:
Geology Department of Agriculture and Rural Development (GDARD).
1:10 000 Ortho Photos of 2010.
Biodiversity Information for the Joe Morolong Local Municipality as
obtained from the South African National Biodiversity Institute's
(SANBI) website

J&G, Jeffares & Green (Pty) Ltd.
37 Sunningdale Office Park,
Pretoria Rd., Sunningdale
Tel: (011) 807-0000
Email: jg@jg.co.za
Web: www.jg.co.za



© Copyright J&G (Pty) Ltd.

Eskom Proposed Klipkop-Lehating 132 kV Powerline: Alternative Powerline Route Map



Datum: WGS84
Spheroid: WGS84
Projection: Deg Min Sec

J&G Project 3909
Project name: Eskom Lehating Project
Date: 23/07/2015

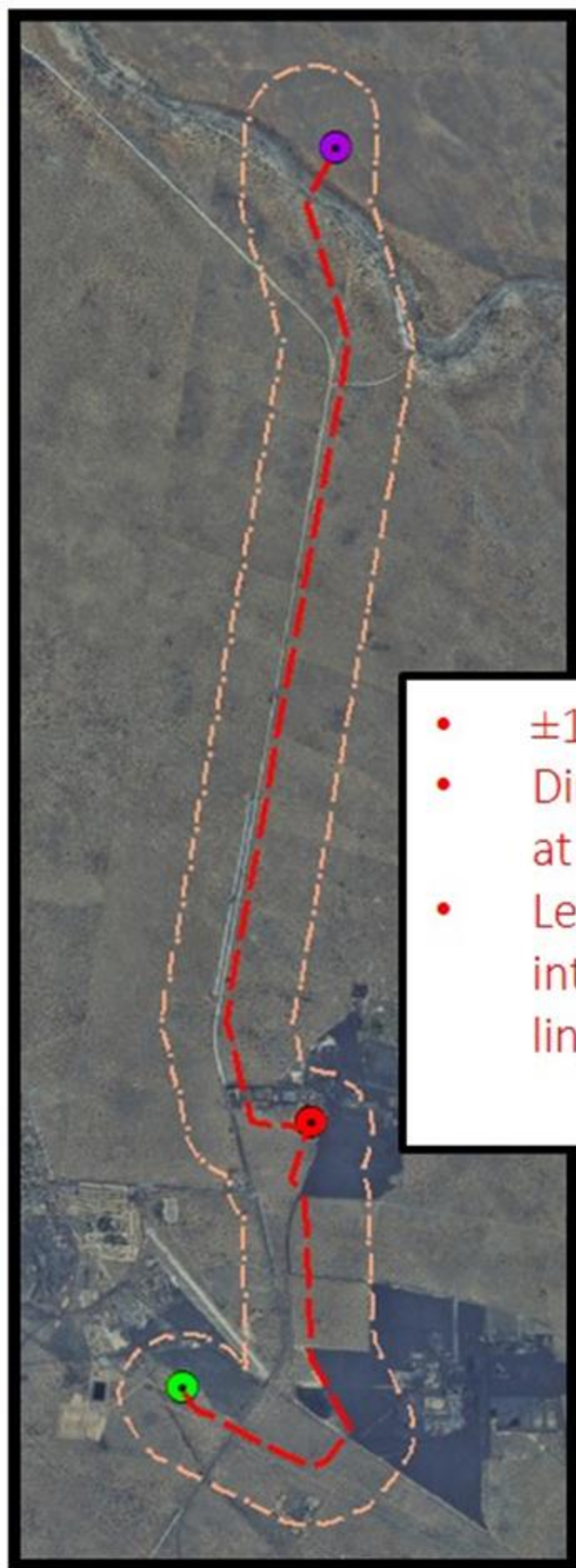
Source:
Geology Department of Agriculture and Rural Development (GDARD).
1:10,000 Ortho Photos of 2010.
Biodiversity Information for the Joe Morolong Local Municipality as
obtained from the South African National Biodiversity Institute's
(SANBI) website

J&G, Jeffares & Green (Pty) Ltd.
37 Sunningdale Office Park,
Pretoria Rd, Sunningdale
Tel: (011) 807-0000
Email: jg@jg.co.za
Web: www.jg.co.za



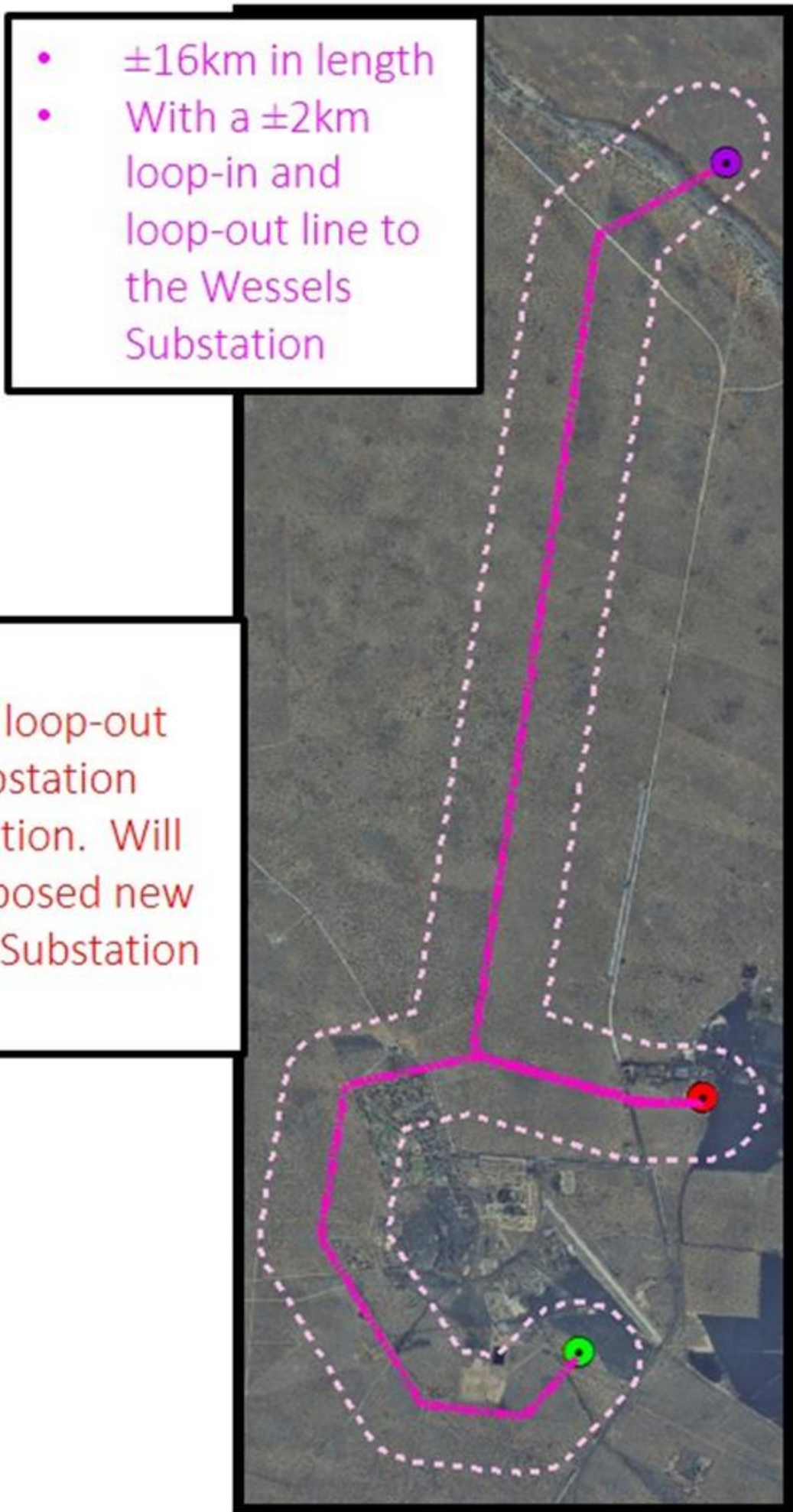
© Copyright JGI (Pty) Ltd.

Route Alternative 1



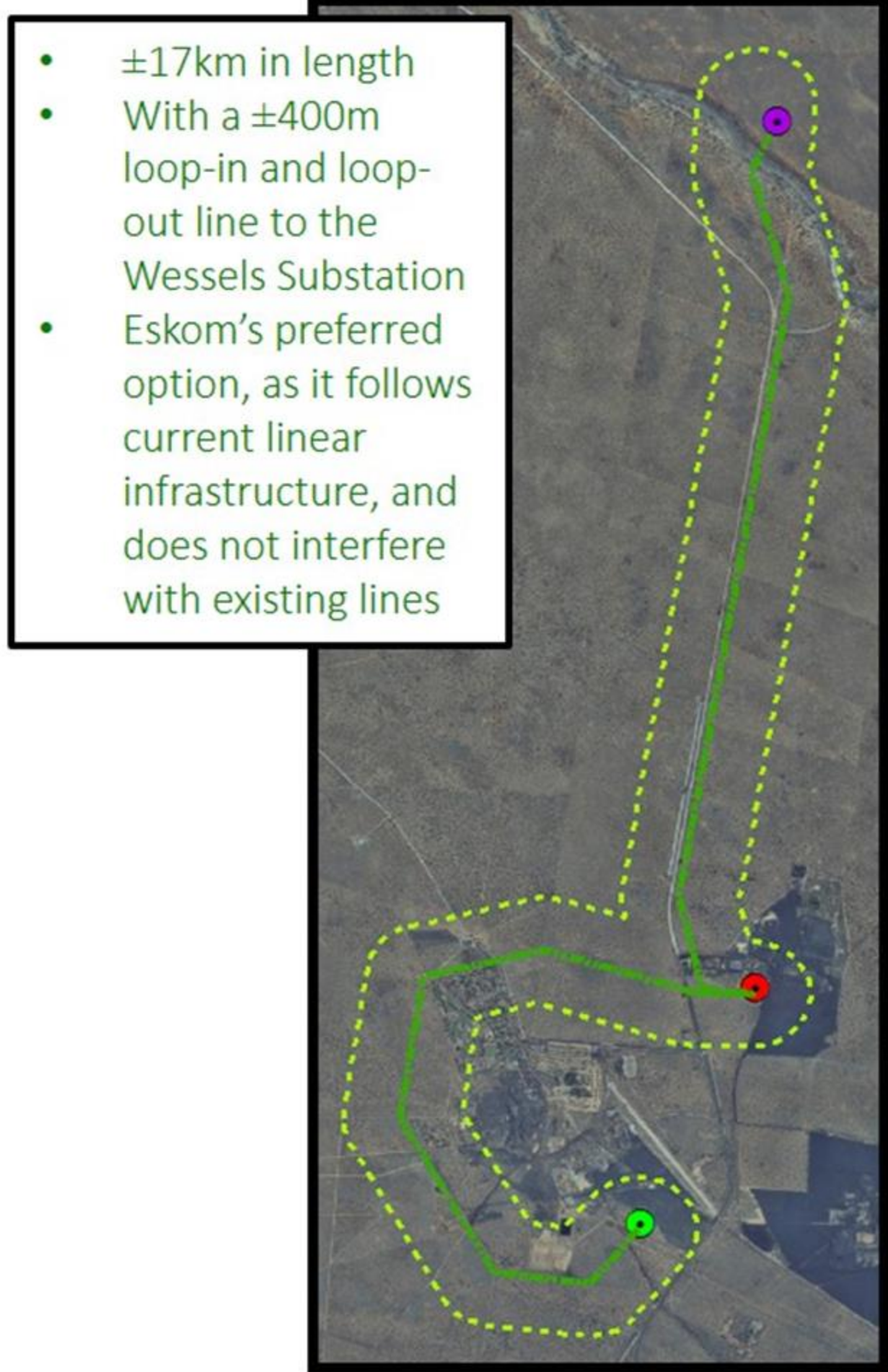
- ±14km in length
- Direct loop-in and loop-out at the Wessels Substation
- Least preferred option. Will interfere with proposed new lines for the Delta Substation

Route Alternative 2



- ±16km in length
- With a ±2km loop-in and loop-out line to the Wessels Substation

Route Alternative 3



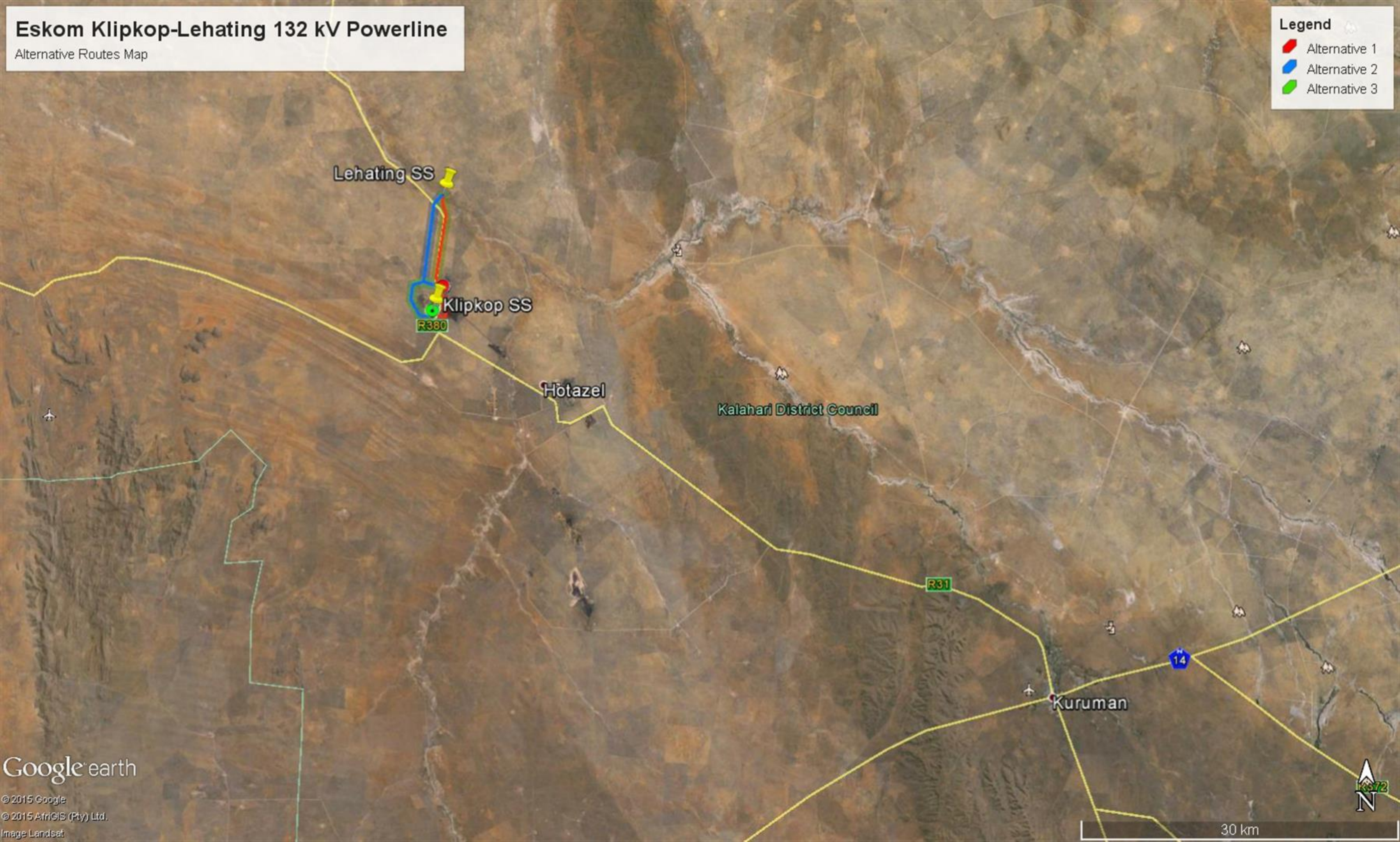
- ±17km in length
- With a ±400m loop-in and loop-out line to the Wessels Substation
- Eskom's preferred option, as it follows current linear infrastructure, and does not interfere with existing lines

Eskom Klipkop-Lehating 132 kV Powerline

Alternative Routes Map

Legend

- Alternative 1
- Alternative 2
- Alternative 3

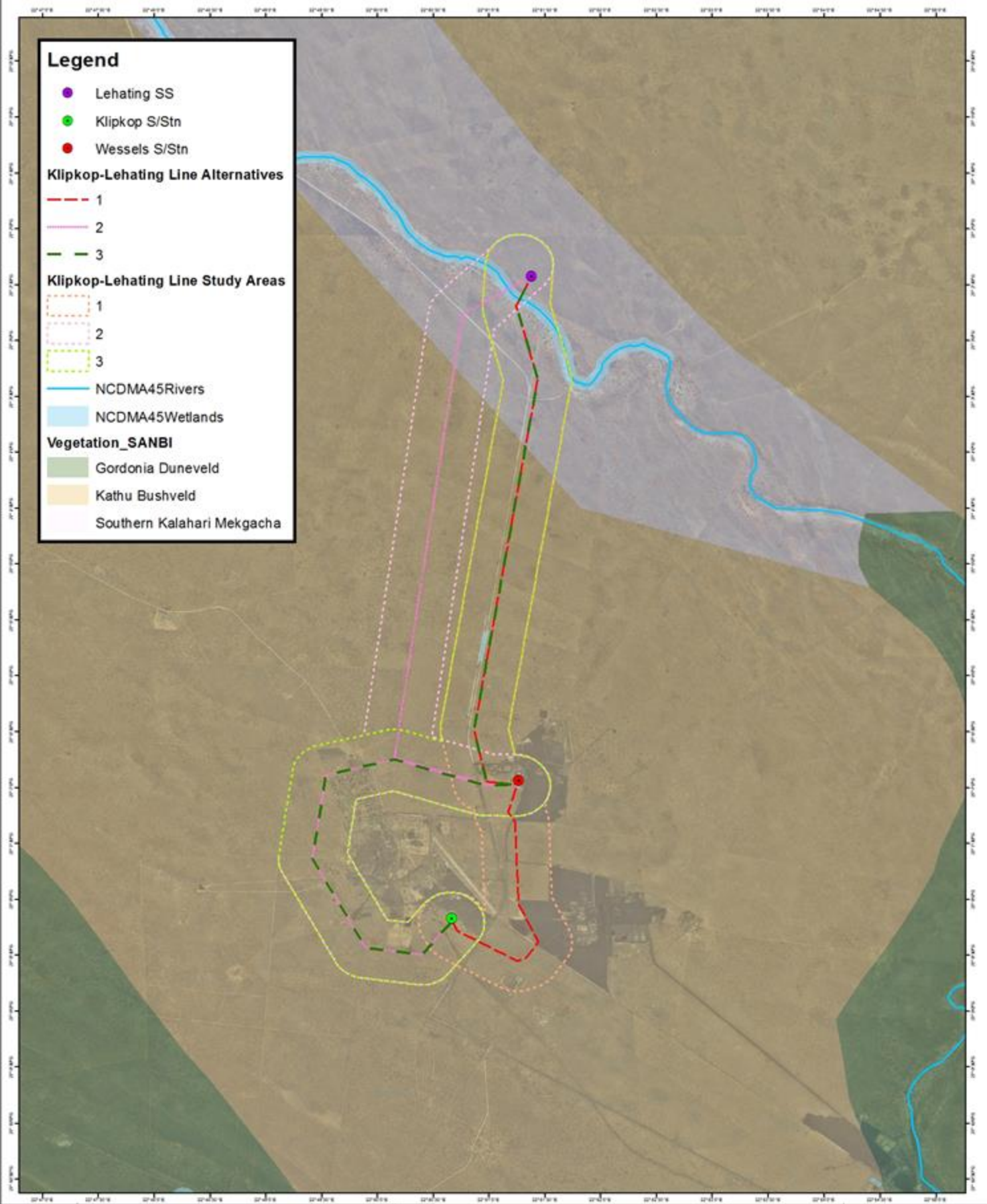


Google earth

© 2015 Google
© 2015 AfrGIS (Pty) Ltd.
Image Landsat

30 km

Eskom Proposed Klipkop-Lehating 132 kV Powerline: Vegetation Map

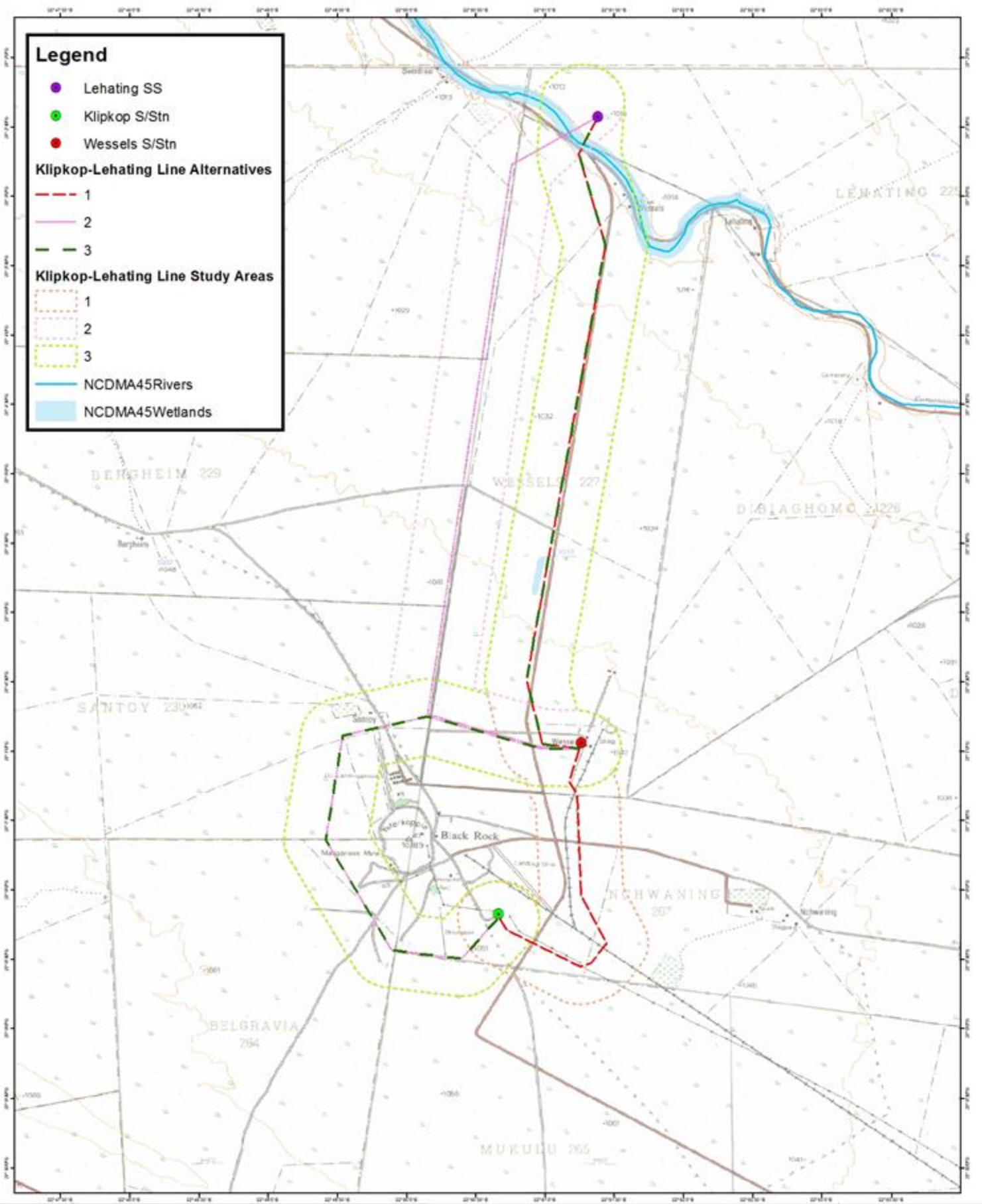


Drawn: WGS84
Spheroid: WGS84
Projection: Deg Min Sec

J&G Project 2909
Project name: Eskom Lehating Project
Date: 23/01/2015
Source:
Gauteng Department of Agriculture and Rural Development (GDARD),
1-10 900 Ortho Photos of 2010
Biodiversity Information for the Joe Morolong Local Municipality as
obtained from the South African National Biodiversity Institute's
(SANBI) website

GIL Jeffries & Green (Pty) Ltd
31 Sunninghill Office Park,
Pretoria Rd, Sunninghill
Tel: (011) 807-6460
Email: gjg@gilgreen.co.za
Web: www.gilgreen.co.za

Eskom Proposed Klipkop-Lehating 132 kV Powerline: Locality Map



Legend

- Lehating SS
- Klipkop S/Stn
- Wessels S/Stn

Klipkop-Lehating Line Alternatives

- 1
- 2
- 3

Klipkop-Lehating Line Study Areas

- 1
- 2
- 3
- NCDMA45 Rivers
- NCDMA45 Wetlands



Datum: WGS84
Spheroid: WGS84
Projection: Dag Win Sec

J&G Project 2908
Project name: Eskom Lehating Project
Date: 23/02/2015

Source:
Geuting Department of Agriculture and Rural Development (GDARD),
1:10 000 Ortho Photos of 2010
Boundary information for the Joe Molekoe Local Municipality as
obtained from the South African National Biodiversity Institute's
(SANBI) website

GIL Jeffares & Green (Pty) Ltd
37 Sunninghill Office Park,
Fetters Rd, Sunninghill
Tel: (011) 807-0460
Email: jg@gil.co.za
Web: www.gil.co.za