

Proposed Development of a Office Precinct within the Mapungubwe National Park, Limpopo Province

Viewshed Analysis Map:
Mapungubwe

Legend

- Office Precinct
- 10_Km
- 5_Km
- 2_Km
- 1_Km
- <all other values>

CLASS

- N
- M
- R
- S
- NFEPA_Rivers
- Very High Visibility
- High Visibility
- Moderate Visibility
- Low Visibility

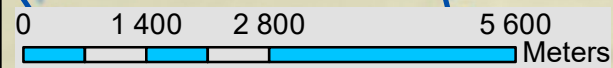
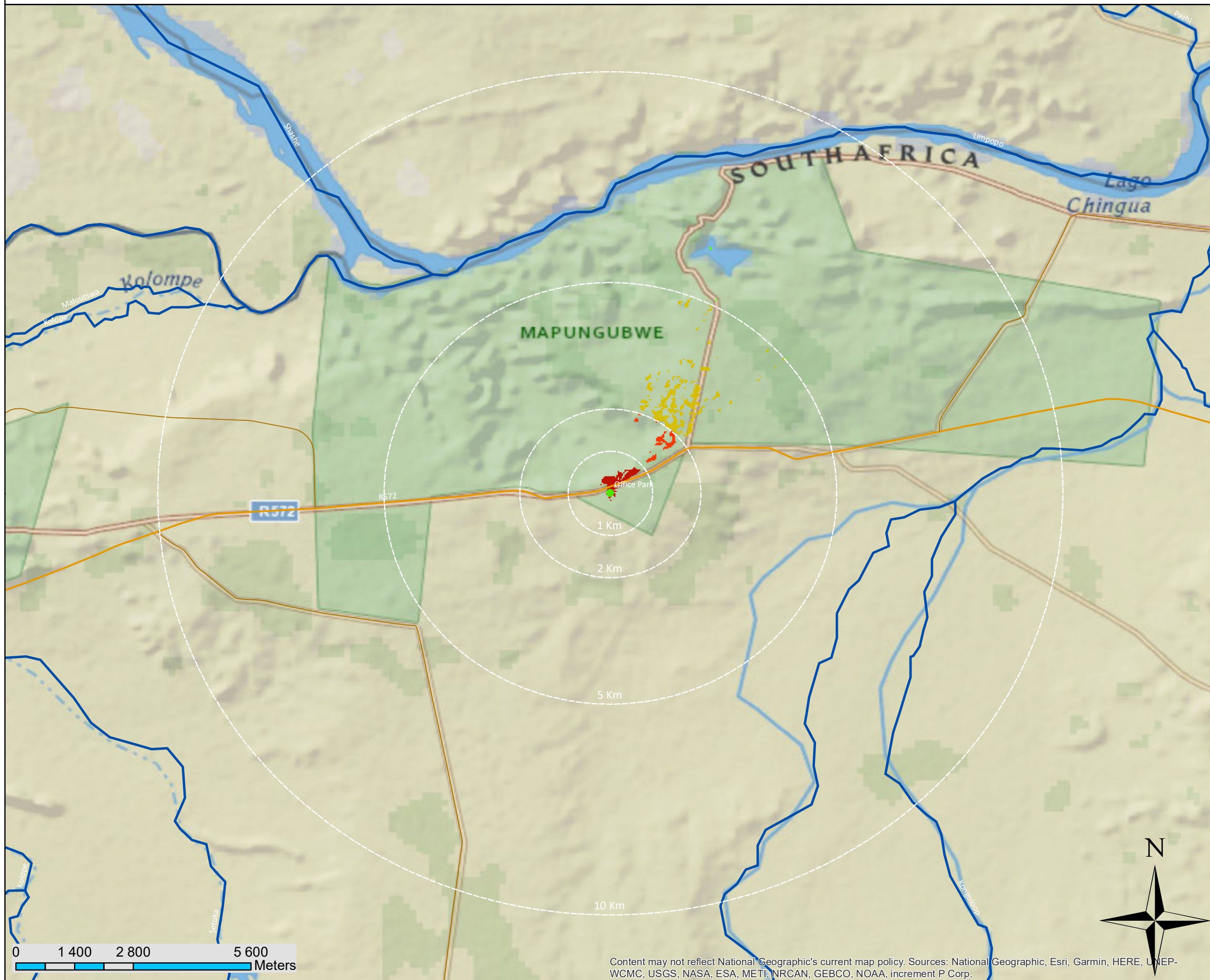
Co-ordinates:
Lat: 22° 14' 36.43" S
Long: 29° 24' 32.82" E

DATUM: WGS 84/UTM 35S
PROJECTION: PROJECTED
DATE: NOVEMBER 2019
SCALE: 1:86 000

Prepared by:



Prepared for:



Content may not reflect National Geographic's current map policy. Sources: National Geographic, Esri, Garmin, HERE, UNEP-WCMC, USGS, NASA, ESA, METI, NRCAN, GEBCO, NOAA, increment P Corp.

