

ISAZISO SESICELO SOCWANINGO LWEZEMVELO

Isasizo sesicelo sokwenza ucwaningo Lwezemvelo oluhambisana nomgomo oshicilelwe emthethweni kaZwelonke wokuphathwa kweMvelo ka2014, njengoba uchtshiyelwe (isahluko 5, sesigaba 24(5), 24M kanye nesigaba 44 somthetho kaZwelonke wokuphathwa kwemvelo, ka1998, njengoba uchtshiyelwe) sifakiwe ngaphansi komnyango Wokuthuthukiswa Kwezomnotho, Ezokuvasha, NezeMvelo wakwaZulu-Natali.

Intuthuko ohlongozwayo idinga imvumo exhumene neBasic Assessment Report ngakho bonke abanentshisekelo nabathintekayo kulesi sicelo bayameywa ukuthi babhalise kwa-K2M Environmental zingakapheli izinsuku ezingamashumi amathathu (30) kushicilelwe lesimemezelo.

Isihloko sephrojekthi ehlongozwayo:

Maqaqa Piggery

Inombolo yenkomba yeEIA:

DC21/0011/2022

Indawo YeProjekthi:

Iphrojekthi isendaweni esele kwipulazi iQuembe 11043, kuWadi 4 kaMasipala waseMdoni. Umgwaqo oholela kwisiza ungasempumalanga yaso isiza.

Ama GPS Co-ordinates endawo:

Latitude: 30° 13' 45.614" Ningizimu

Longitude: 30° 29' 4.424" Empumalanga

Incazelo YeProjekthi:

Ibhizinisi lezokulima elaziwa ngeMaqaqa Trading CC lifisa ukwakha indawo yokufuya izingulube. Inhloso yokwakha lendawo esahlongozwa, ukufuya kanye nokuthengisa ngezingulube emakethe yenyama. Okwamanje le ndawo ayisetsheziwa. Ingqikithi yendawo ilinganiselwa kumahektha angu-2.63 kanti amahektha alomhlaba angu-0.52 kuphela afaneleke ukunisela. Ingqalasizinda ehlongozwayo izobandakanya:

- Izindlu ezihlwanyelayo ezintathu (3) (30m x 15m iyinye). Izingulube ezingamashumi amahlanu (50) ezizogcinwa ngokuhlanganyela.
- Isakhiwo esizoba nehhovisi, igumbi lokugcina impahla kanye nezindlu zangasese
- Umgodi we-slurry kanye nodonga lokubiyela. Umgodi we-slurry uzoba ngu50m³ ubukhulu, 1.8m ukuphakama no6m ububanzi.
- Ithangi lika doti kanye nendawo yokugcina ubulongwe.
- Amathangi kaJojo amathathu okuqoqa nokugcina amanzi. Amanzi azotholakala emfuleni iNcazuka.
- Izindlu zangasese zizosebenzisa i-septic tank kanye nohlelo lwe-soakaway

Isimemo Somphakathi Sokuphawula:

Ababambe iqhaza bayamenywa ukuba babhalise njengabanentshisekelo noma abathintekayo baphinde baphawule emqulwini osalungiswa weBasic Assessment zingakapheli izinsuku ezingamashumi amathathu kukhishwe lesisimemezelo. iKhophi yomqulu osalungiswa weBasic Assessment izotholakala eMzinto Public Library (ku786 Nelson Mandela Rd, Hazelwood, Umzinto, 4200) kusukela mhla zingu-**22 June 2022**. Umqulu ungaphinde utholakale ngezindlela zobuchwepheshe besimanjemanje uma ucelwa.

Izethulo mayelana nalesi sicelo zingafakwa ngesikahhlamezi (fax) noma nge email kuMnumzane Gert Watson (kwimininingwane yezokuxhumana engezansi.) Izethulo kumele zifike emahhovisi akwa-K2M Environmental ngaphambili noma ngawo umhlaka **22 July 2022**.

Olunye ulwazi ngalesicelo lungatholakala kwa:

K2M Environmental (Pty) Ltd

Ningaxhumana noMnumzane Gert Watson

Inombolo yoCingo: (031) 764 6743

Isikhalamezi: (031) 764 2354

i-eMail: gert@k2m.co.za or
prisantha@k2m.co.za

ENVIRONMENTAL IMPACT ASSESSMENT PROCESS FOR THE PROPOSED MAQAQA PIGGERY LOCATED WITHIN WARD 4 OF THE UMDONI LOCAL MUNICIPALITY



BACKGROUND INFORMATION DOCUMENT

JUNE 2022



PURPOSE OF THIS DOCUMENT

The purpose of this Background Information Document (BID) is to provide a brief description of the proposed development and the EIA Process that will be followed. The aim is to inform Interested and Affected Parties (IAPs) on how to participate in the EIA Process and to obtain comments from IAPs on the proposed development. Findings of the EIA Process, including concerns raised by IAPs will be submitted to the KwaZulu Natal Department of Economic Development, Tourism and Environmental Affairs (DEDTEA).

INTRODUCTION

An enterprise known as Maqaqa Trading CC, wishes to construct a piggery with the aim of breeding, producing and selling pigs to local enterprises in the meat market. K2M Environmental (Pty) Ltd was appointed as the independent Environmental Assessment Practitioner (EAP) to undertake the Environmental Impact Assessment for the proposed development.

PROJECT DESCRIPTION

LOCATION AND DIRECTION TO THE SITE

The project area is located on Portion 27 of the Farm Quembe No. 11043 within Ward 4 of the Umdoni Local Municipality. Access to the site will be obtained via the existing access road which borders the project area to the east.

PROJECT CO-ORDINATES

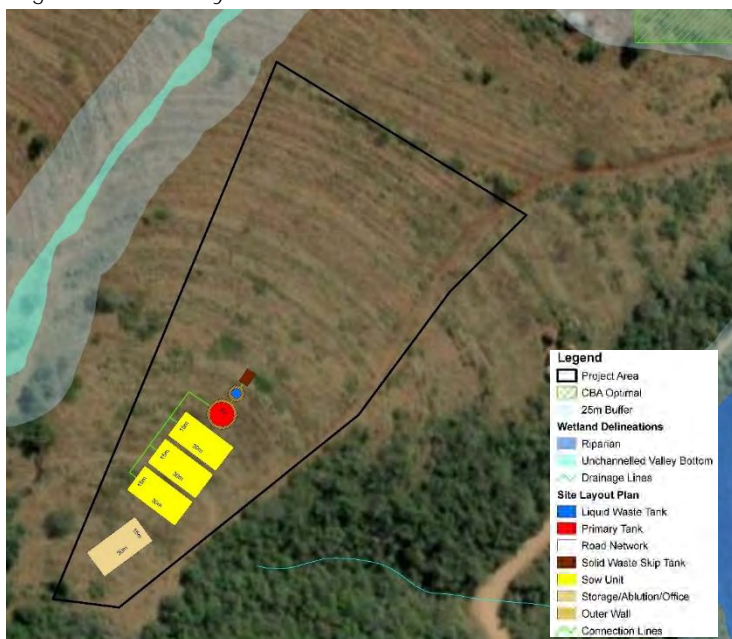
Latitudinal Extent: 30° 13' 45.61" S

Longitudinal Extent: 30° 29' 4.42" E

CURRENT LAND USE

The project area is currently vacant and was historically used for agricultural purposes. No environmentally sensitive areas have been identified within the project area. An unchanneled valley bottom wetlands was identified to west of the site.

Figure 1: Site Layout Plan



DESCRIPTION OF PROPOSED ACTIVITY

The project area, which is currently vacant, has a total extent of approximately 2.63 ha with a development footprint of approximately 0.52 ha. The proposed infrastructure of the piggery upon completion will entail the following:

- 3 sow units with dimensions of 30m x 15m per unit. A total of 50 pigs will be kept collectively.
- A building which will comprise of an office, storeroom and ablution. The building dimension will be 30m x 15m.
- A lined slurry pit of 50m³ in capacity at a height of 1.8m, diameter of 6m and outer wall.
- A tank to store the liquid waste for evaporation and a skip bin for storage of the solid waste which will then be dried and utilised for compost.
- 3 onsite JoJo tanks for the storage of water. Water will be abstracted from the Ncazuka River.
- The ablution facility will be a septic tank and soakaway system which will be located outside the 32m watercourse buffer.

LEGAL REQUIREMENTS

The EIA process for this proposed development will be conducted in accordance with the 2014 Environmental Impact Assessment Regulations (as amended), published in terms of sections 24(2) and 24D of the National Environmental Management Act (Act No. 107 of 1998).

The National Environmental Management Act (NEMA) 2014 EIA Regulations lists activities that may have a significant impact on the environment, and which consequently require environmental authorization from the competent authority. The regulations also specify the environmental assessment process, and information that is required to enable DEDTEA to make a decision regarding the proposed activity.

The Basic Assessment Process is required to be followed with accordance to the 2014 EIA Regulations (as amended), as the following activities have the potential to be triggered by the proposed development:

ACTIVITY 4 OF LISTING NOTICE 1 (GN.R. 327):

The development and related operation of facilities or infrastructure for the concentration of animals in densities that exceed-

(ii) 8 square meters per small stock unit and;

a. more than 1 000 units per facility excluding pigs where (b) applies; or

b. more than 250 pigs per facility excluding piglets that are not yet weaned;

Background:

The maximum carrying capacity of pigs and piglets of the proposed piggery development will be 450 units which exceeds the threshold of 250 pigs.

ENVIRONMENTAL IMPACT ASSESSMENT PROCESS

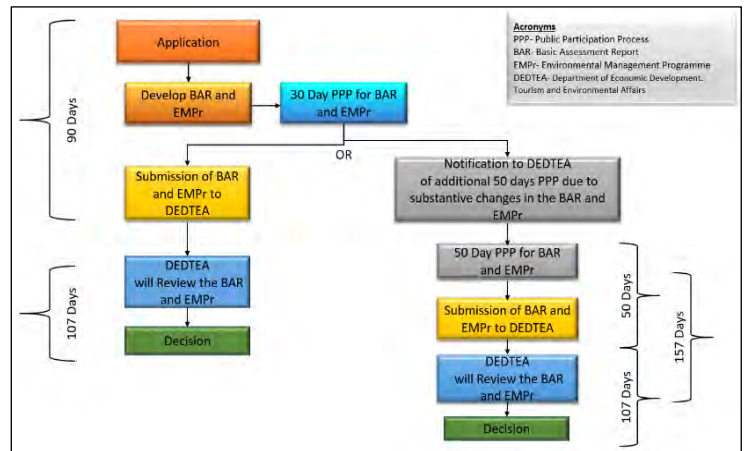
ENVIRONMENTAL ASSESSMENT PRACTITIONER

K2M Environmental (Pty) Ltd has been appointed by the applicant as the independent Environmental Assessment Practitioner (EAP) responsible for undertaking the Environmental Impact Assessment.

THE BASIC ASSESSMENT PROCESS

The project methodology involved with the required Environmental Authorization Process is illustrated in Figure 2.

Figure 2: Illustration of the Basic Assessment Process



POTENTIAL ENVIRONMENTAL ISSUES

GEOPHYSICAL AND BIOPHYSICAL:

- Potential soil pollution and soil erosion.
- Potential pollution and contamination from the septic tank and slurry pit.
- Invasion of alien plants as they are attracted to disturbed environments.
- An Environmental Management Programme is developed with which to monitor and mitigate any environmental impacts before they occur, during the construction and operational phase of the proposed development.

SOCIO-ECONOMIC ISSUES:

- Odours associated with the piggery may be a nuisance to the surrounding households.
- The construction phase of development will result in a number of temporary employment opportunities for unemployed members of the surrounding community.
- The operational phase of the proposed piggery will create employment opportunities for the surrounding community.

CULTURAL-HISTORIC ISSUES:

Documentation was submitted to KZN Amafa for their comments.

PUBLIC PARTICIPATION PROCESS

Public participation is the foundation of the Environmental Impact Assessment process. The principles of the National Environmental Management Act (NEMA) guide various aspects of the EIA process, including public participation which involves provision of sufficient information, in a transparent manner, to IAPs. During the Public Participation Process input from, specialists, government, and non-government organizations as well as all other potential IAPs are gathered to enable more informed decision-making.

Public Participation during the Basic Assessment Process will entail the EAP notifying all IAPs about the draft Basic Assessment Report. IAPs will then be given the opportunity of at least 30 days to comment and raise issues and/or concerns of the draft BAR. Once the 30-day commenting period is over, the EAP will then compile the Final BAR which will be inclusive of comments and responses and submit to DEDTEA for assessment. IAPs will then be notified in writing of the decision taken by DEDTEA pertaining to the project.

Stakeholders are invited to register as Interested and Affected Parties (IAPs) as well as comment on the Draft Basic Assessment Report within 30 days of this notice. A copy of the Draft Basic Assessment Report is available at the Umzinto Public Library located on 786 Nelson Mandela Rd, Hazelwood, Umzinto, 4200 from the 22 June 2022. Alternatively, the Draft Basic Assessment Report may be made available electronically to the IAP upon request.

Representations with respect to this application may be made by fax or mail to Mr Gert Watson (contact details below) and must reach K2M Environmental offices on or before the 22 July 2022.

Further information pertaining to this project can be obtained from:

Contact Person: Mr. Gert Watson

Tel: 031 7646 743

Fax: 031 7642 354

Email: gert@k2m.co.za

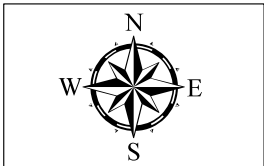
prisantha@k2m.co.za



**UMDONI LOCAL MUNICIPALITY:
MAQAQA PIGGRY PROJECT**

LOCALITY

Scale: 1:5 000	Date: February 2022
Drawn By: P. Govender	Checked By: G Watson
Coordinate System:	WGS 84 (Lo 31)



Legend

- Project Area
- Local Municipalities
- Wards (2020)
- Road Network**
 - Provincial
 - District
 - Local
 - Unnumbered Access Roads



MAQAQA PIGGERY DEVELOPMENT: UMDONI LOCAL MUNICIPALITY

DEVELOPMENT LAYOUT PLAN

Legend

Project Area

CBA Optimal

25m Buffer

Wetland Delineations

Riparian

Unchannelled Valley Bottom

Drainage Lines

Site Layout Plan

Liquid Waste Tank

Primary Tank

Road Network

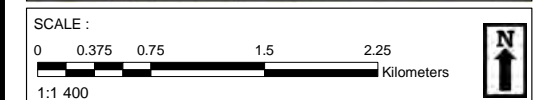
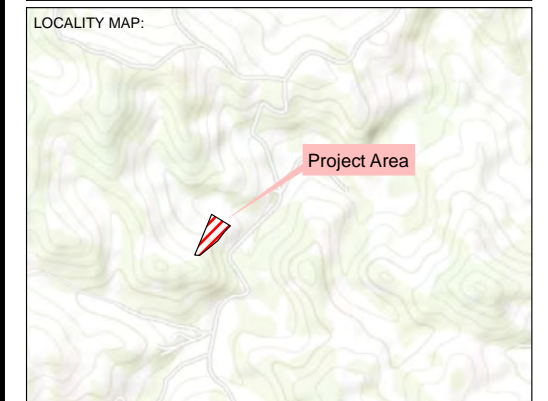
Solid Waste Skip Tank

Sow Unit

Storage/Ablution/Office

Outer Wall

Connection Lines



DATE: JUNE 2022

MAP REFERENCE/ VERSION NUMBER : KZN E-309 _Version 1

COORDINATE SYSTEM: WGS84 (Lo31)

PREPARED BY:



Date: _____