

103263

Messel Bay Sorted Material

Site 5-6 Find No. 103263

Square S823W724 Quadrant SW

Unit Name NWR6M Date 14 NOV 06

Lot No. 3339

Category FAUNA



103338

Mossel Bay Sorted Material

Site 5-6 Find No. 103338

Square S823W724 Quadrant SW

Unit Name NWR6J Date 15 NOV 06

Lot No. 3341

Category FAUNA



103387

Mossel Bay Sorted Material

Site 5-6 Find No. 103387

Square S823W724 Quadrant SW

Unit Name NWR6J Date NOV 06

Lot No. 3341

Category

FAUNA



106386

Mossel Bay Sorted Material

Site 5-6 Find No. 106386

Square S841W726 Quadrant SE

Unit Name LS7X Date 14-Jun-07

Lot No. 3246

Category fauna



107010

Mossel Bay Sorted Material

Site 5-6 Find No. 107010

Square S847W726 Quadrant NE

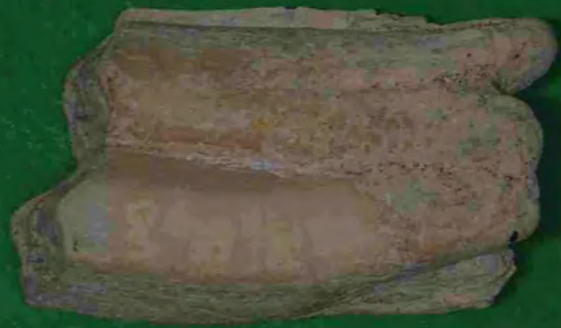
Unit Name LS7J Date 13-Jun-07

Lot No. 3226

Category Fauna



115433



MAPCRM cc: Site: PP30
Sorted Material Date 20.9.05
Square N _____ E _____
Unit Name cleanings around sand Quad _____
Lot # 2399 Mesh Size 10 mm
Category Fauna 115433



120970

Mossel Bay Sorted Material

Site 5-6 Find No. 120970

Square S845W726 Quadrant NE

Unit Name LS7BU Date 02-Jun-07

Lot No. 3428

Category fauna



Mossel Bay Sorted Material
Site 5-6 Find No. 129996
Square S845W726 Quadrant NE
Unit Name LS7FA Date 25-Oct-07
Lot No. 154
Category Fauna

Mossel Bay Archaeology Project
129996



129996



134571

Mossel Bay Sorted Material
Site 5-6 Find No. 134571
Square S847W727 Quadrant SE
Unit Name LS7FO Date 30-Oct-07
Lot No. 1171
Category *fauna*



General
Plotted Find
Mossel Bay Archaeology Project
134571



160907

Mossel Bay Sorted Material
Site 5-6 Find No. 160907
Square s840w725 Quadrant SW
Unit Name LS8EU Date 05-Nov-08
Lot No. 8013 Residue yes
Category Fauna

General Picked Find
60907
MOSSSEL BAY ARCHAEOLOGY PROJECT



182998

Mossel Bay Site: 5-6
Sorted Material Date 4 Dec 08
Square S 845 W 726
Unit Name LS8LF Quad nw
Lot # 8216 Mesh Size PP
Category Fauna 82998.28



212474

Mossel Bay Sorted Material

Site 5-6 Find No. 212474

Square s845w727 Quadrant SE

Unit Name LS9CA Date 11-Jun-09

Lot No. 8358 Residue yes

Category Fauna



213839

Mossel Bay Sorted Material

Site 5-6 Find No. 213839

Square s845w727 Quadrant SE

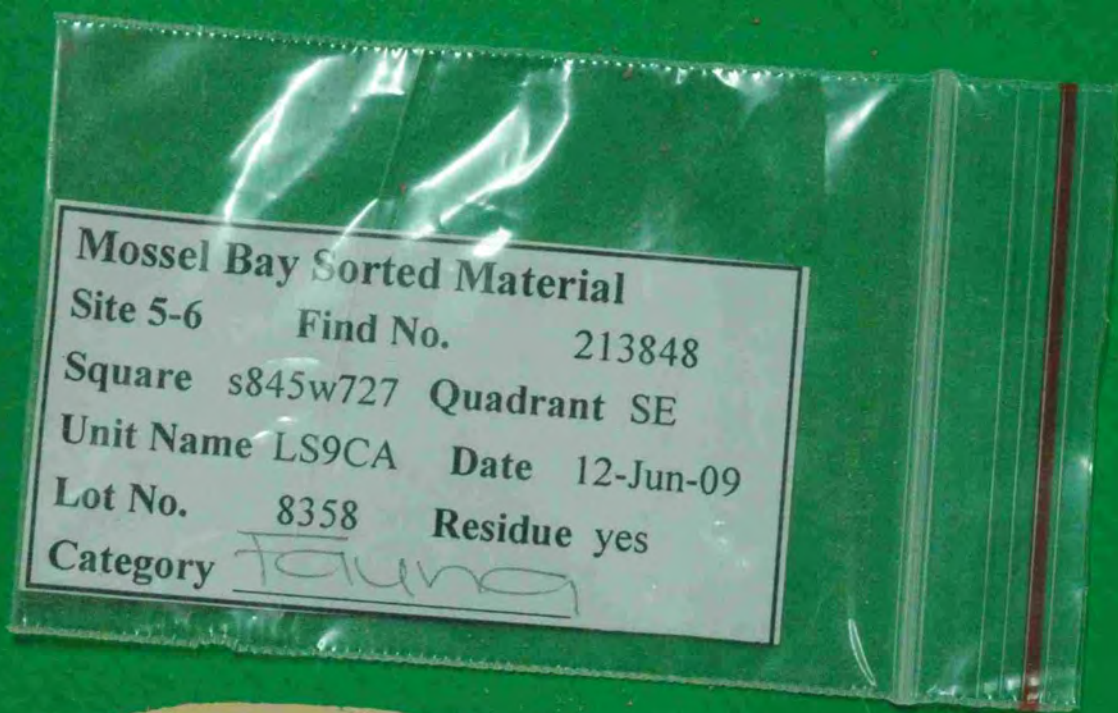
Unit Name LS9CA Date 12-Jun-09

Lot No. 8358 Residue yes

Category Fauna



213848



221351

Mossel Bay Sorted Material
Site 5-6 Find No. 221351
Square s845w727 Quadrant NE
Unit Name LS9DB Date 19-Jun-09
Lot No. 8411 Residue no
Category Tanning

General
Plotted Find
221351
Mossel Bay Archaeology Project



22230

22230



Mossel Bay Site 13B
Sorted Material

Date 3 APR 03

Square N 97 E 95

Unit Name W3AH₂ Quad NE

Lot # 682 Mesh Size Plotted Find

Category fauna 22230

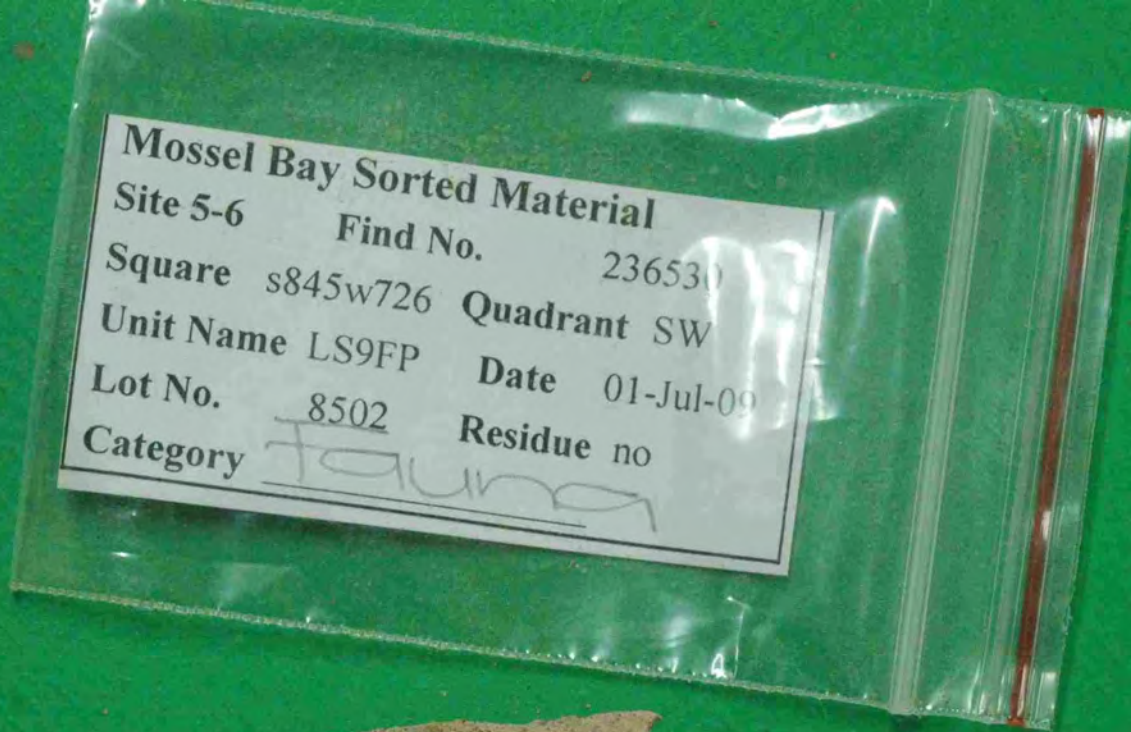


22929

Flaked Find #22929
Mossel Bay Site 13B
Bucket Tag
Date 12-4-03
Square A9E95 Quad SW
Urn Name W3BN
Lot # 743



236530



252980

Mossel Bay Sorted Material

Site 5-6 Find No. 252980
Square s847w727 Quadrant SW
Unit Name LS9IN Date 10-Jul-09
Lot No. 8602 Residue no
Category Leana



Mossel Bay Archaeology Project
Plotted Find
252980



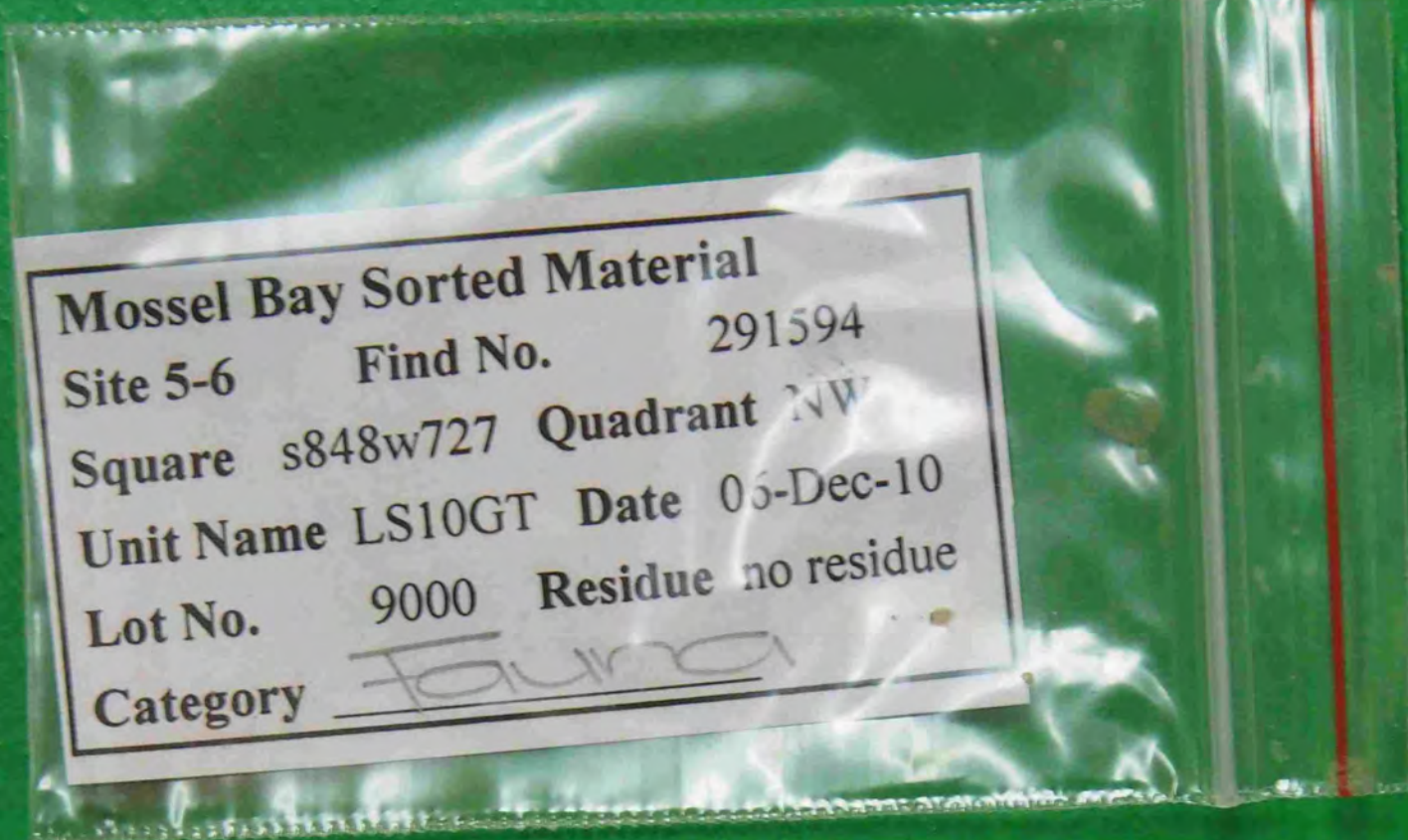
253542

Mossel Bay Sorted Material
Site S-6 Find No. 253542
Square s847w727 Quadrant SW
Unit Name LS9IN Date 10-Jul-09
Lot No. 8602 Residue no
Category Sana

Mossel Bay Archaeology Project
Plotted Find
253542



291594



Mossel Bay Sorted Material
Site 5-6 Find No. 291594
Square s848w727 Quadrant NW
Unit Name LS10GT Date 06-Dec-10
Lot No. 9000 Residue no residue
Category Found



Plotted Find
291594
Mossel Bay Archaeology Project



10

cm



291843

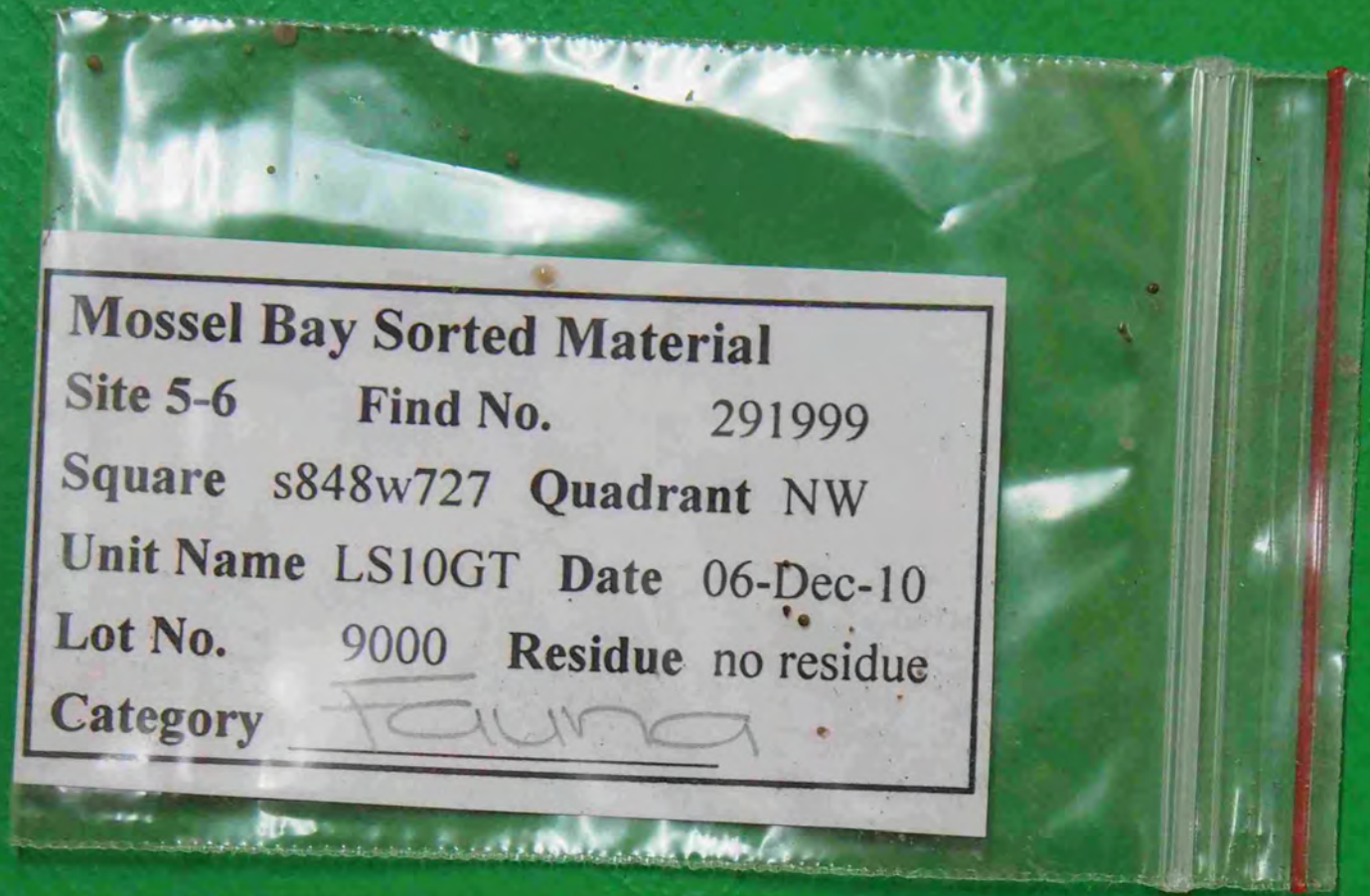
Mossel Bay Sorted Material

Site 5-6 Find No. 291843
Square s848w727 Quadrant NW
Unit Name LS10GT Date 06-Dec-10
Lot No. 9000 Residue no residue
Category Fauna

Plotted Find
Mossel Bay Archaeology Project
291843



291999



Mossel Bay Sorted Material
Site 5-6 Find No. 291999
Square s848w727 Quadrant NW
Unit Name LS10GT Date 06-Dec-10
Lot No. 9000 Residue no residue
Category Fauna



Plotted Find
Mossel Bay Archaeology Project
291999



34615



Mossel Bay Site 13B

Sorted Material

Date 23 APRIL 2003

Square

N 97

E

95

Unit Name

W3CE

Quad

NW

Lot # 782

Mesh Size Plotted

find

Category FAUNA

34615



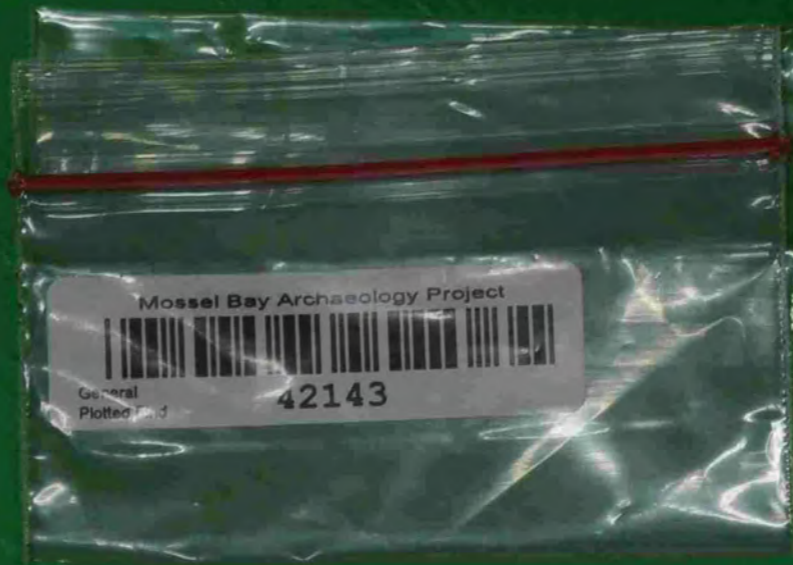
42117



Mossel Bay Site 13B
Sorted Material Date 21 OCT 104
Square N 92 E 108
Unit Name E4AB Quad NW
Lot # 1051 Mesh Size PP
Category FAUNA



42143



Mossel Bay Site 13B
Sorted Material
Date 2003104
Square N 92 E 108
Unit Name E4AB Quad NW
Lot # 1051 Mesh Size PP
Category FAUNA



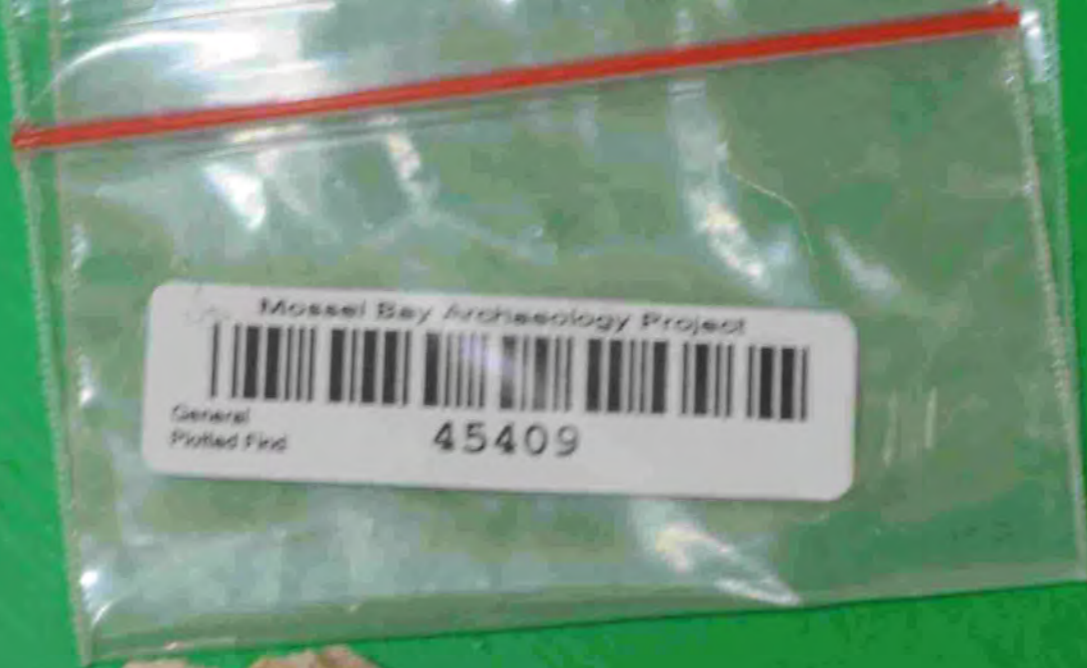
45264

Mossel Bay Site 13B
Sorted Material
Date 10 Oct 04
Square N 98 E 96
Unit Name W14Z Quad SE
Lot # 1383 Mesh Size PP
Category Fauna



45409

Mossel Bay Site 13B
Sorted Material Date 20 OCT 04
Square NQ4 E 94
Unit Name M44AP Quad SE
Lot # 1352 Mesh Size PP
Category FAUNA



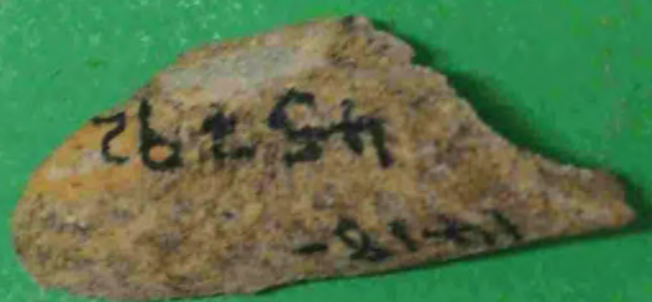
45713



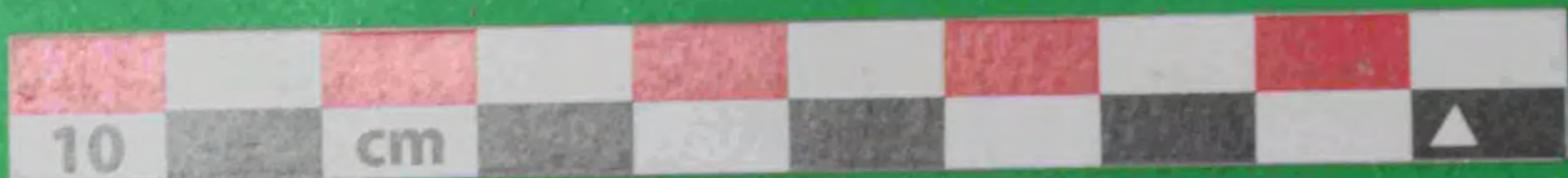
Mossel Bay Site 13B
Sorted Material Date 4 Nov 04
Square N 97 E 94
Unit Name WYCK Quad NE
Lot # 1417 Mesh Size PP
Category FAUNA 45713



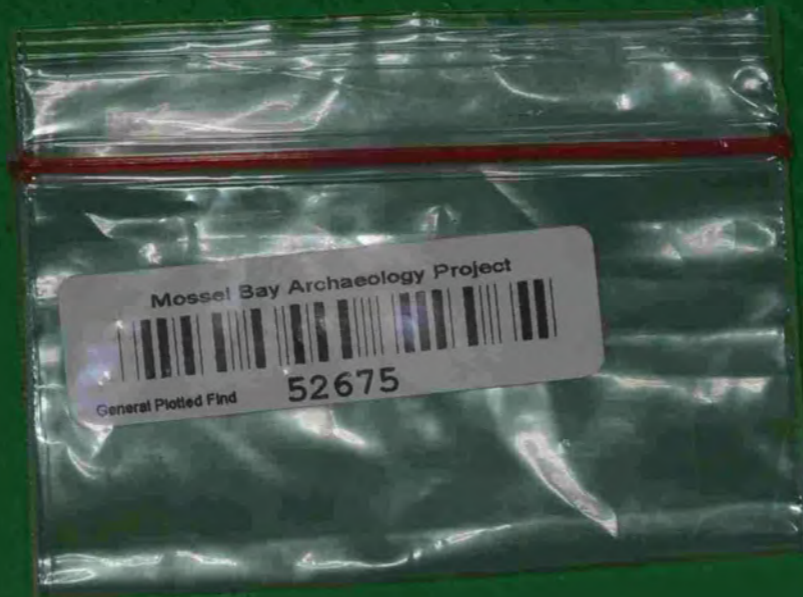
45792



Mossel Bay Site 13B
Sorted Material Date 4 NOV 04
Square N 97 E 94
Unit Name W4AT2 Quad NE
Lot # 1418 Mesh Size PP
Category FAUNA 45792



52675



Mosse! Bay Site 13B
Sorted Material Date 16 Nov 04
Square N 93 E 108
Unit Name E4BI Quad SW
Lot # 1114 Mesh Size PP
Category FAUNA



52943

Mossel Bay Site 13B
Sorted Material

Date 17 Nov 04

Square N 98 E 108

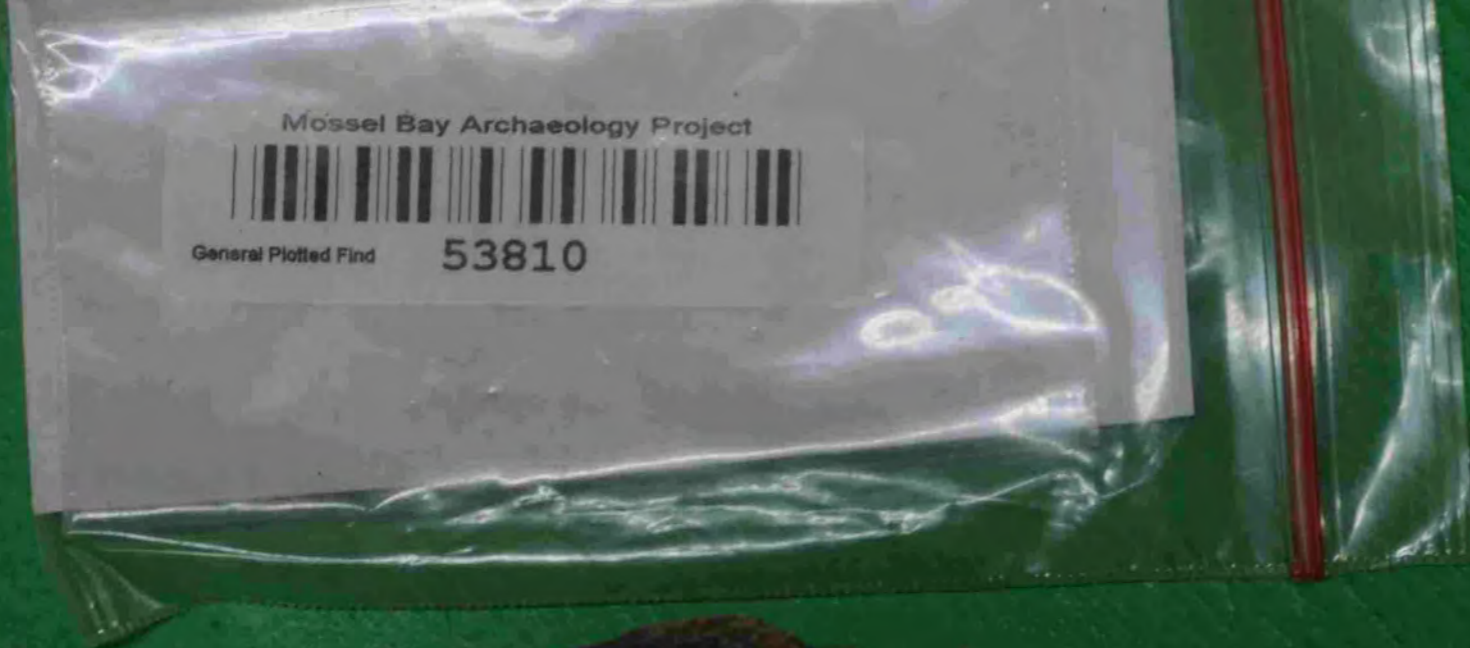
Unit Name E4BP Quad SW

Lot # 1117 Mesh Size PP

Category Fauna



53810



Mossel Bay Site 13B

Bucket Tag _____ Date 12/15/12

Square M9BE916 Quad SE

Strat Unit Name W/4'EM

Lot # _____

Mossel Bay Archaeology Project

Lot Number 1495

64546



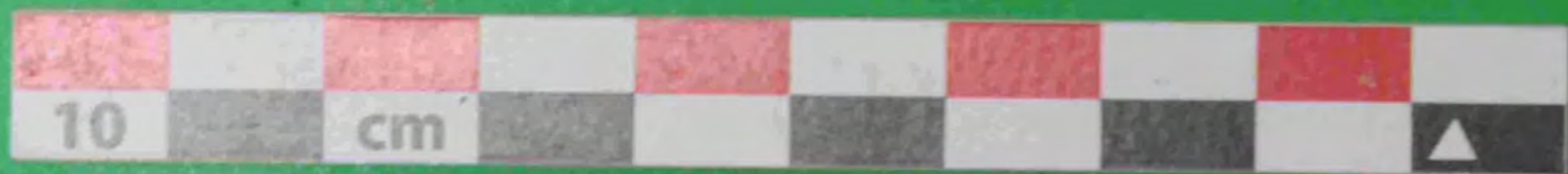
Mossel Bay Site 13B
Sorted Material Date 22 Nov '05

Square N 93 E 107

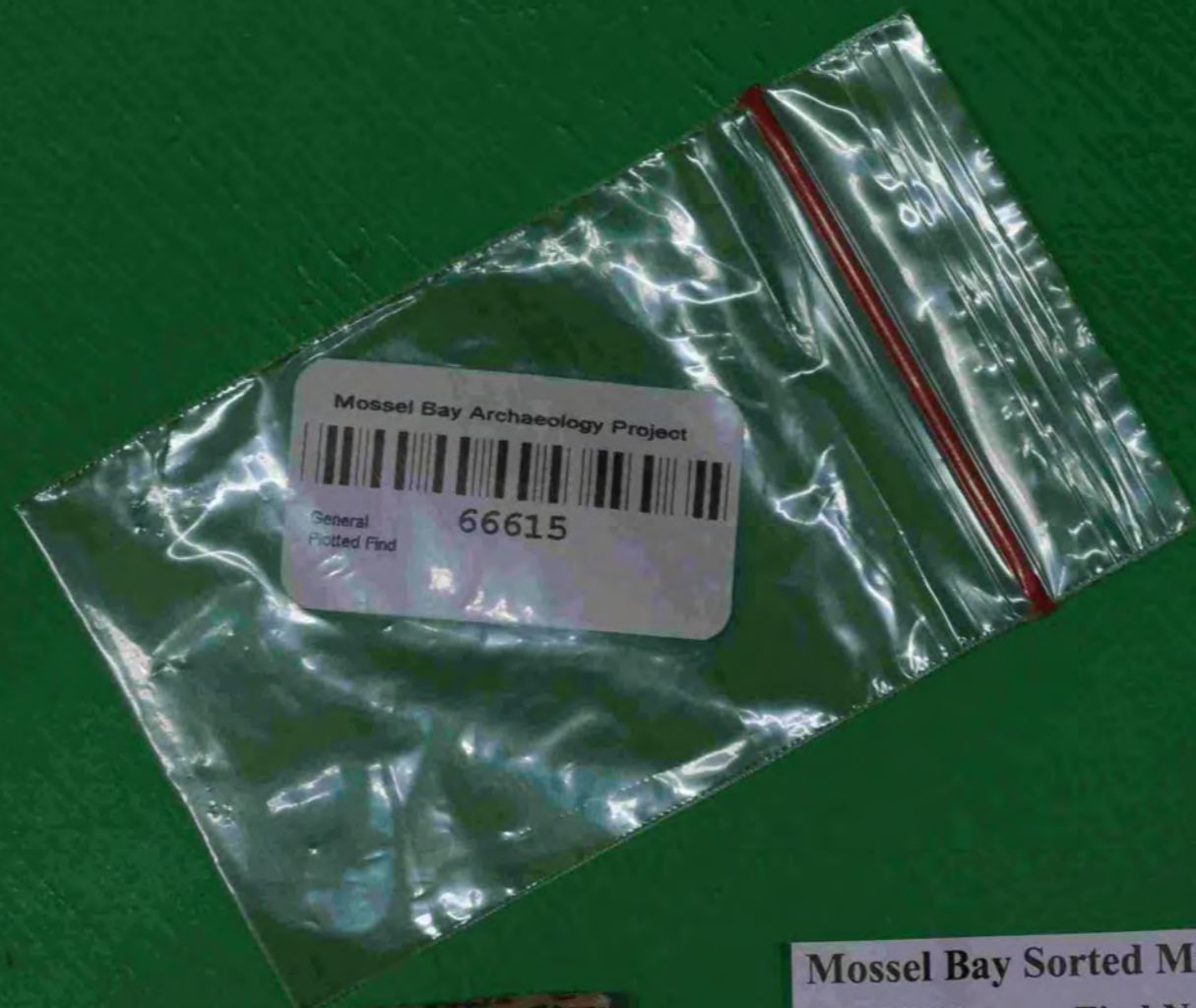
Unit Name EST Quad SW

Lot # 1572 Mesh Size P.P

Category Fauna 64546



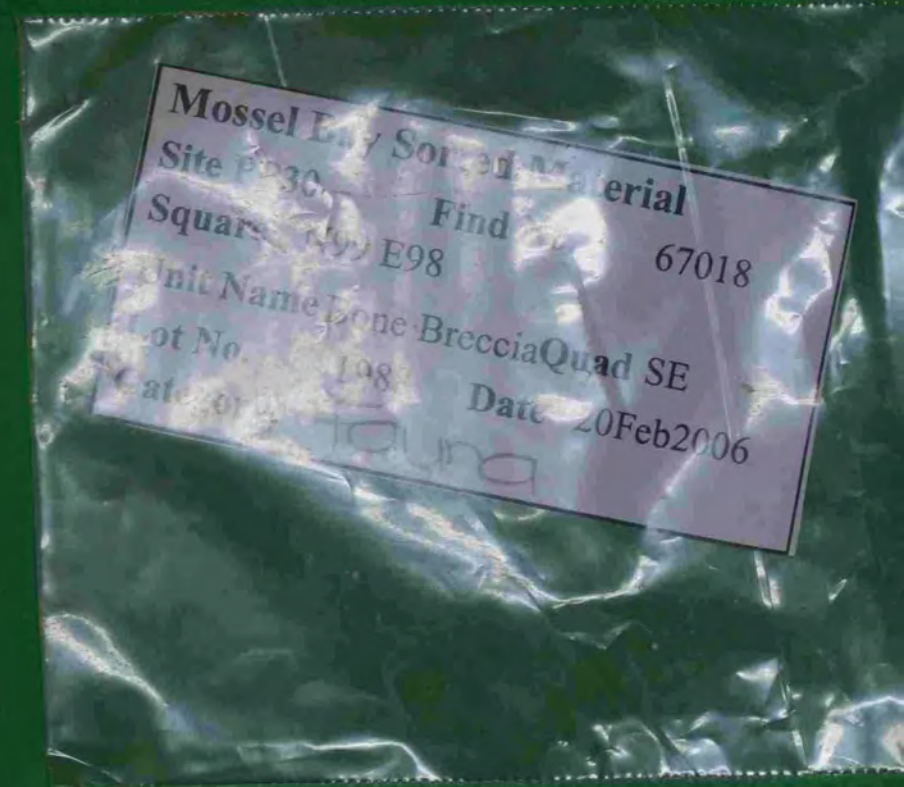
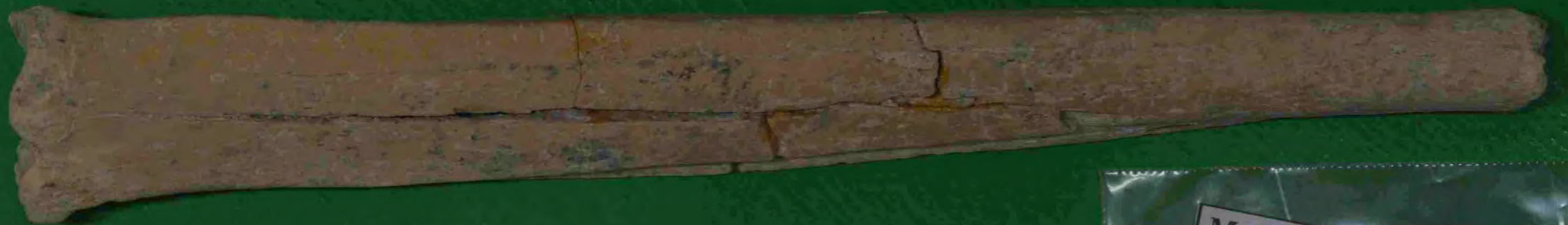
66615



Mossel Bay Sorted Material
Site PP30 Find No. 66615
Square N100.5 E96.5
Unit Name YB16 Quad NW
Lot No. 1931 Date 08Feb2006
Category: *fauna*



67018



67189



Mossel Bay Sorted Material

Site PP30 Find No. 67189

Square N100.5 E97

Unit Name YB51 Quad SW

Lot No. 2108 Date 23Feb2006

Category: *Fauna*



67209



Mossel Bay Sorted Material
Site PP30 Find No. 67209
Square N100.5 E98
Unit Name YB28 Quad SE
Lot No. 2097 Date 23Feb2006
Category: Fauna



67429



MA PCRMC: Site: 1250
Sorted Material Date: 23.2.06
Square N 150 E 413
Unit Name YB 209 Quad NWN
Lot # 2133 Mesh Size PP
Category Foundry 67429

67768



Mossel Bay Site : PP30

Sorted Material Date 10 Mar 2006

Square N 100.5 E 97.5

Unit Name YRISA Quad SW

Lot # 2100 Mesh Size PP

Category Fauna 67768.1



67838



MAPCRM cc: Site PP30
Bucket Tag Date: 5/23/06
Square N1005 97
Quad: NE
Strat Unit Name: 20 Trent
Lot #: 222
Lo Number PP30



Mossall Bay
Archaeology Project: **67838**
General Picked Find

67867

Mossel Bay Sorted Material
Site PP30 Find No. 67867
Square N100.5 E97
Unit Name YB52 Quad NE
Lot No. 2276 Date 15Mar2006
Category: *Fauna*



67923



MAPCRM cc: Site: PP30
Sorted Material Date 20.5.06
Square N _____ E _____
Unit Name Shanings Quad _____
Lot # 2701 Mesh Size PP
Category fauna 67923



80107



Mossel Bay Site 13B
Sorted Material Date 07 Dec 2005

Square N 95 E 109

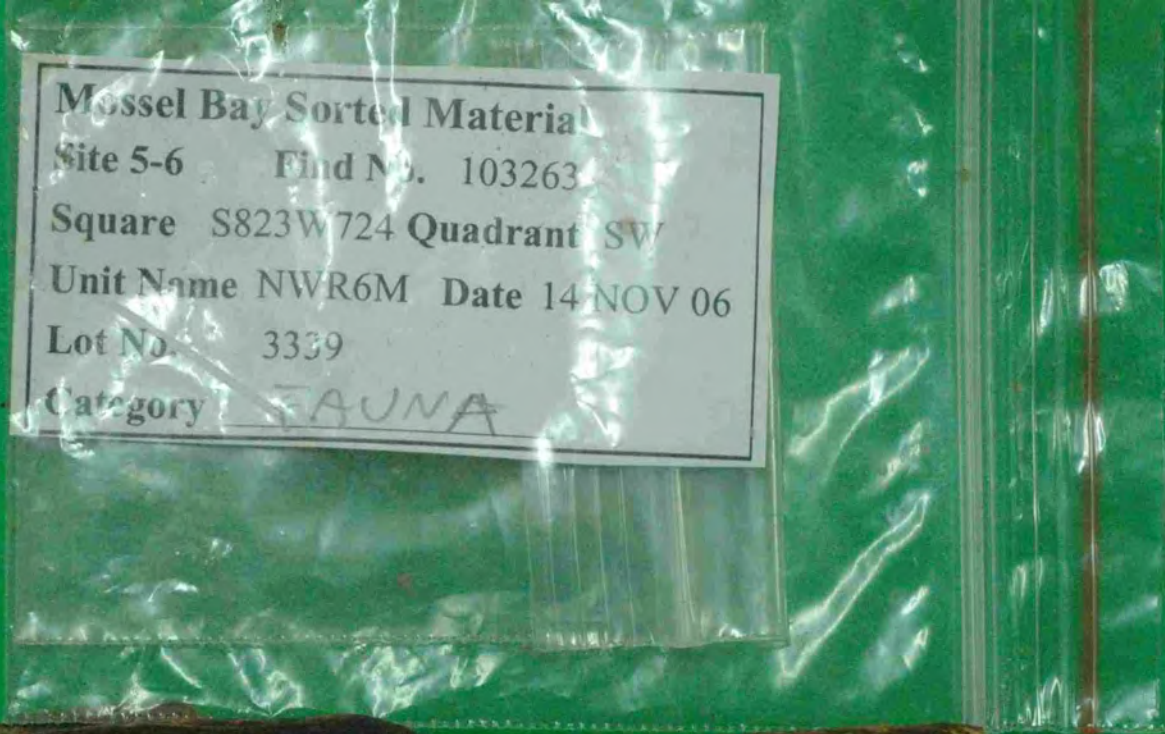
Unit Name NESAX Quad SE

Lot # 1673 Mesh Size PP

Category FAUNA 80107



103263



103338

Mossel Bay Sorted Material

Site 5-6 Find No. 103338

Square S823W724 Quadrant SW

Unit Name NWR6J Date 15 NOV 06

Lot No. 3341

Category FAUNA



103387

Mossel Bay Sorted Material

Site 5-6 Find No. 103387

Square S823W724 Quadrant SW

Unit Name NWR6J Date NOV 06

Lot No. 3341

Category

FAUNA



106386

Mossel Bay Sorted Material

Site 5-6 Find No. 106386

Square S841W726 Quadrant SE

Unit Name LS7X Date 14-Jun-07

Lot No. 3246

Category fauna



107010

Mossel Bay Sorted Material

Site 5-6 Find No. 107010

Square S847W726 Quadrant NE

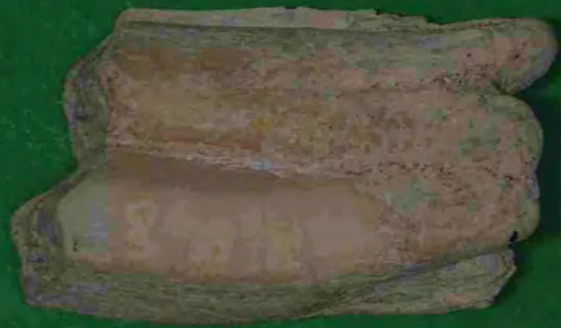
Unit Name LS7J Date 13-Jun-07

Lot No. 3226

Category Fauna



115433



MAPCRM cc: Site: PP30
Sorted Material Date 20.9.05
Square N _____ E _____
Unit Name cleanings around sand Quad _____
Lot # 2399 Mesh Size 10 mm
Category Fauna 115433



120970

Mossel Bay Sorted Material

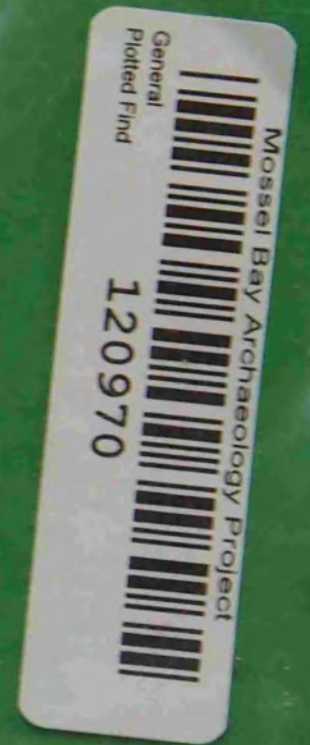
Site 5-6 Find No. 120970

Square S845W726 Quadrant NE

Unit Name LS7BU Date 02-Jun-07

Lot No. 3428

Category fauna



Mossel Bay Sorted Material
Site 5-6 Find No. 129996
Square S845W726 Quadrant NE
Unit Name LS7FA Date 25-Oct-07
Lot No. 154
Category Fauna

Mossel Bay Archaeology Project
129996



129996



134571

Mossel Bay Sorted Material
Site 5-6 Find No. 134571
Square S847W727 Quadrant SE
Unit Name LS7FO Date 30-Oct-07
Lot No. 1171
Category *fauna*



General
Plotted Find
Mossel Bay Archaeology Project
134571



160907

Mossel Bay Sorted Material
Site 5-6 Find No. 160907
Square s840w725 Quadrant SW
Unit Name LS8EU Date 05-Nov-08
Lot No. 8013 Residue yes
Category Fauna

General Picked Find
60907
MOSSSEL BAY ARCHAEOLOGY PROJECT



182998

Mossel Bay Site: 5-6
Sorted Material Date 4 Dec 08
Square S 845 W 726
Unit Name LS8LF Quad nw
Lot # 8216 Mesh Size PP
Category Fauna 82998.28



212474

Mossel Bay Sorted Material

Site 5-6 Find No. 212474

Square s845w727 Quadrant SE

Unit Name LS9CA Date 11-Jun-09

Lot No. 8358 Residue yes

Category Fauna



213839

Mossel Bay Sorted Material

Site 5-6 Find No. 213839

Square s845w727 Quadrant SE

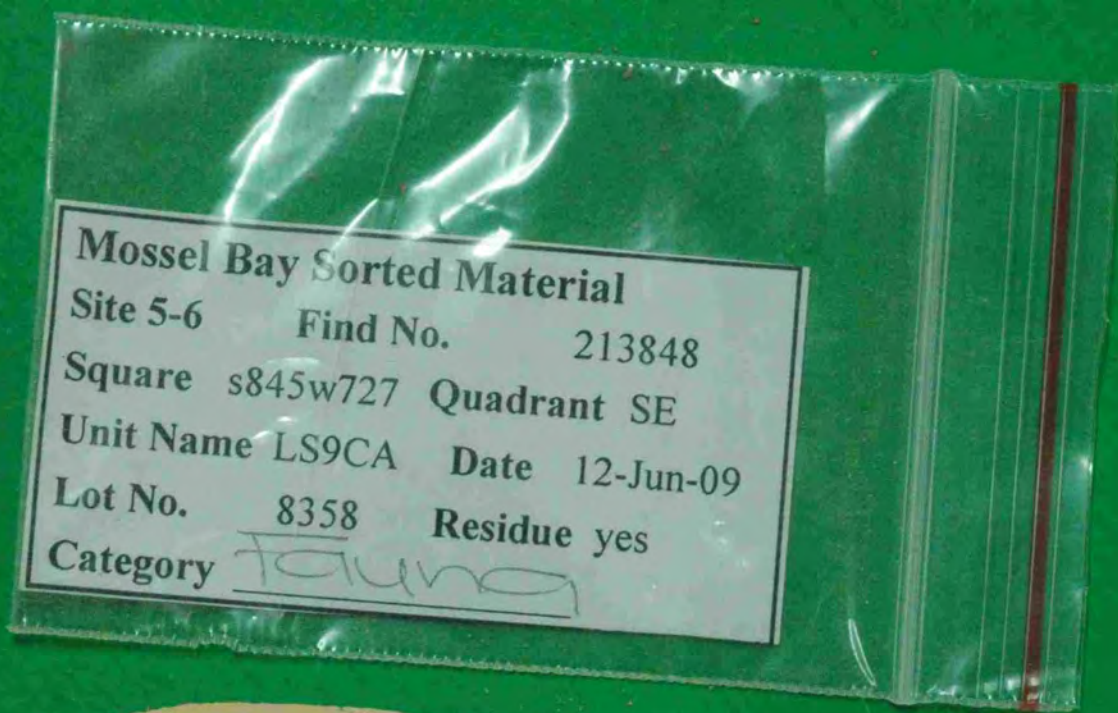
Unit Name LS9CA Date 12-Jun-09

Lot No. 8358 Residue yes

Category Fauna



213848



221351

Mossel Bay Sorted Material
Site 5-6 Find No. 221351
Square s845w727 Quadrant NE
Unit Name LS9DB Date 19-Jun-09
Lot No. 8411 Residue no
Category Tanning

General
Plotted Find
221351
Mossel Bay Archaeology Project



22230

22230



Mossel Bay Site 13B
Sorted Material

Date 3 APR 03

Square N 97 E 95

Unit Name W3AH₂ Quad NE

Lot # 682 Mesh Size Plotted Find

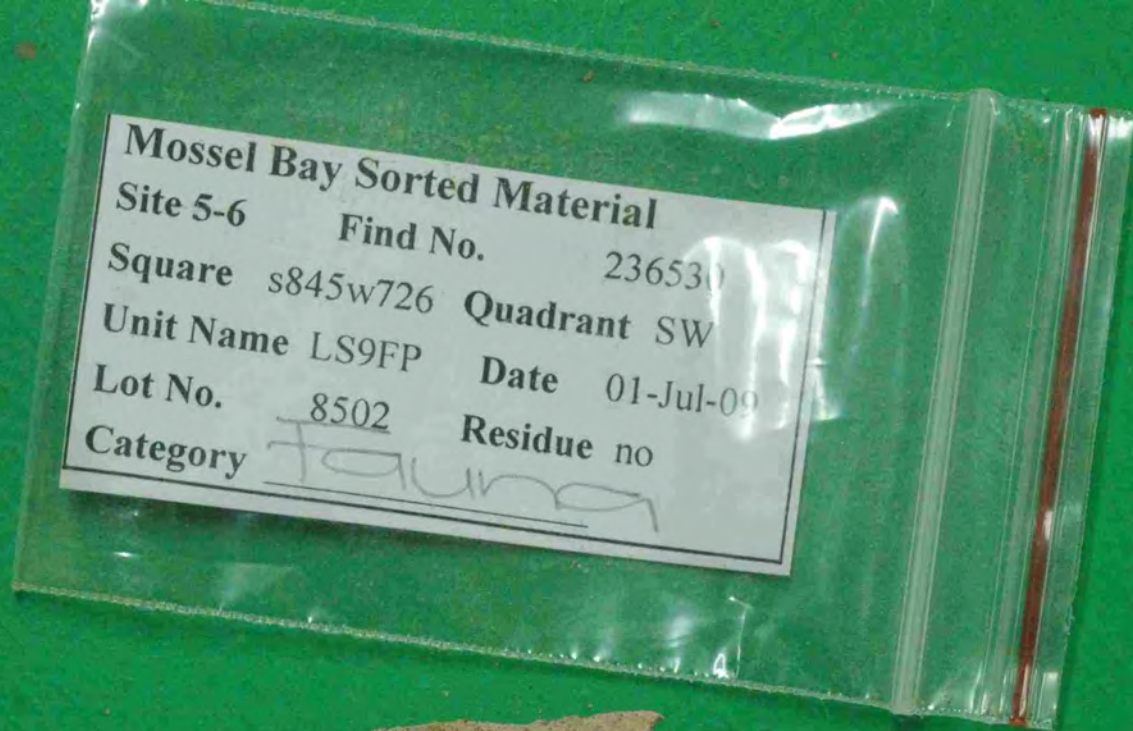
Category fauna 22230



Flaked Find #22929
Mossel Bay Site 13B
Bucket Tag
Date 12-4-03
Square A9E95 Quad SW
Urn Name W3BN
Lot # 743



236530



252980

Mossel Bay Sorted Material

Site 5-6 Find No. 252980
Square s847w727 Quadrant SW
Unit Name LS9IN Date 10-Jul-09
Lot No. 8602 Residue no
Category Leana



Mossel Bay Archaeology Project
Plotted Find
252980



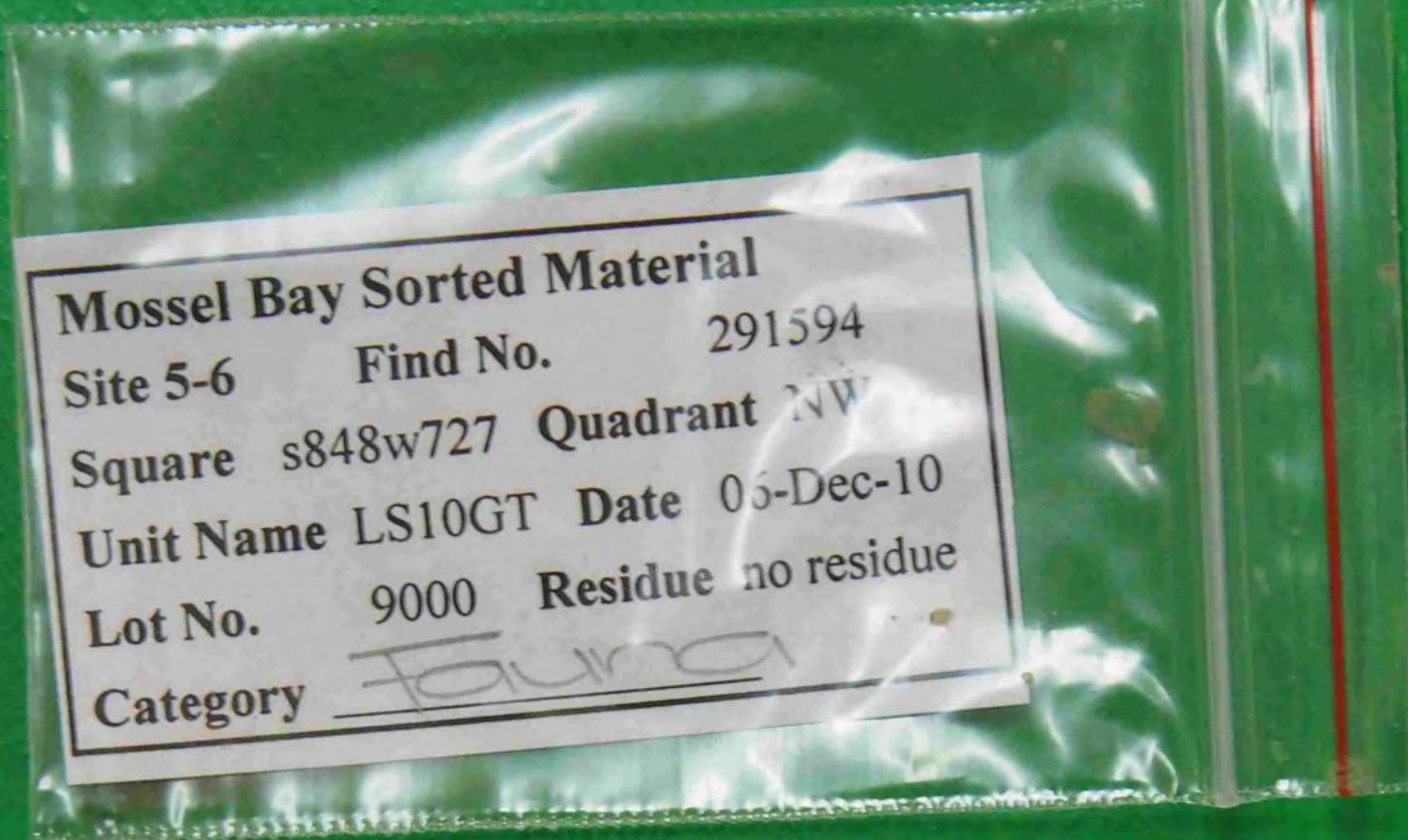
253542

Mossel Bay Sorted Material
Site S-6 Find No. 253542
Square s847w727 Quadrant SW
Unit Name LS9IN Date 10-Jul-09
Lot No. 8602 Residue no
Category Sana

Mossel Bay Archaeology Project
Plotted Find
253542



291594



Mossel Bay Sorted Material
Site 5-6 Find No. 291594
Square s848w727 Quadrant NW
Unit Name LS10GT Date 06-Dec-10
Lot No. 9000 Residue no residue
Category Found



Plotted Find
291594
Mossel Bay Archaeology Project



10

cm

291843

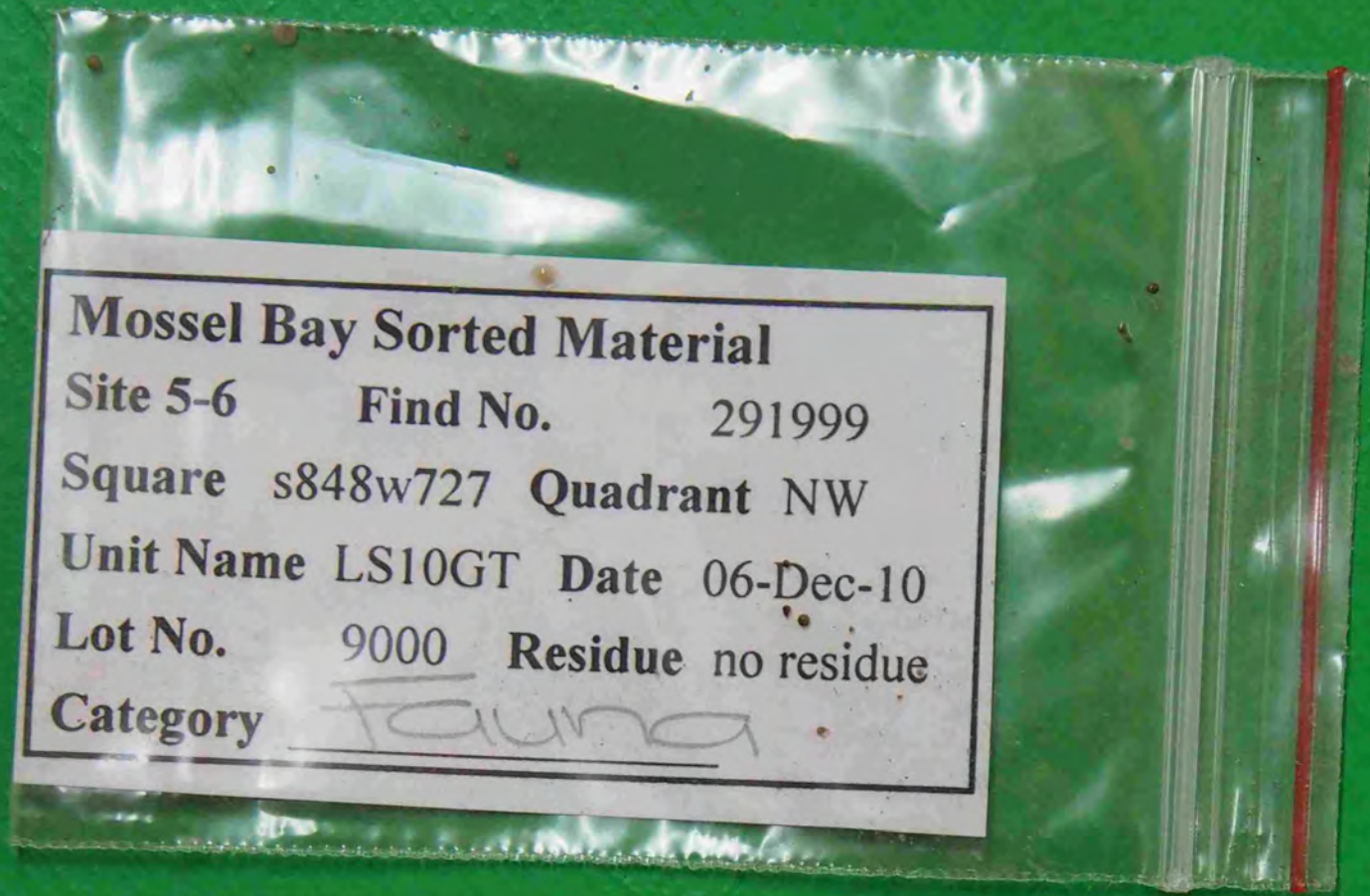
Mossel Bay Sorted Material

Site 5-6 Find No. 291843
Square s848w727 Quadrant NW
Unit Name LS10GT Date 06-Dec-10
Lot No. 9000 Residue no residue
Category Fauna

Plotted Find
Mossel Bay Archaeology Project
291843



291999



34615



Mossel Bay Site 13B

Sorted Material

Date 23 APRIL 2003

Square

N 97

E

95

Unit Name

W3CE

Quad

NW

Lot # 782

Mesh Size Plotted

find

Category FAUNA

34615



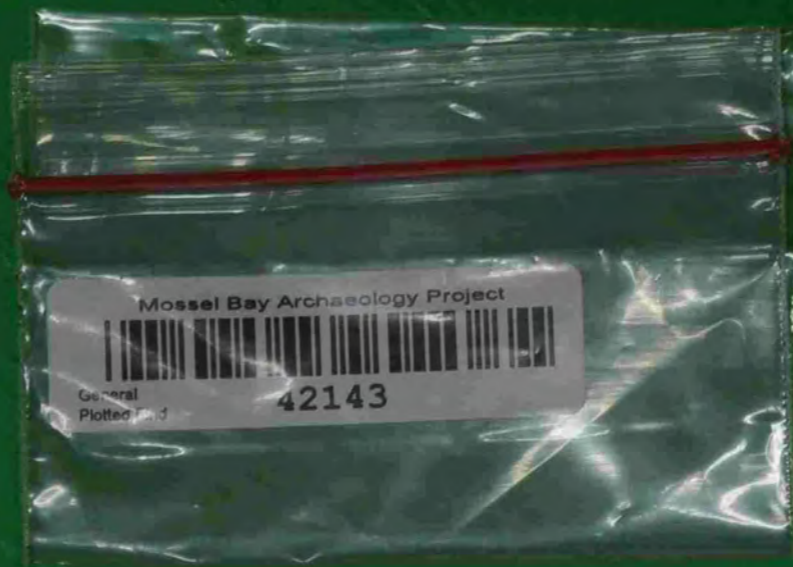
42117



Mossel Bay Site 13B
Sorted Material Date 21 OCT 104
Square N 92 E 108
Unit Name E4AB Quad NW
Lot # 1051 Mesh Size PP
Category FAUNA



42143



Mossel Bay Site 13B
Sorted Material
Date 2003104
Square N 92 E 108
Unit Name E4AB Quad NW
Lot # 1051 Mesh Size PP
Category FAUNA



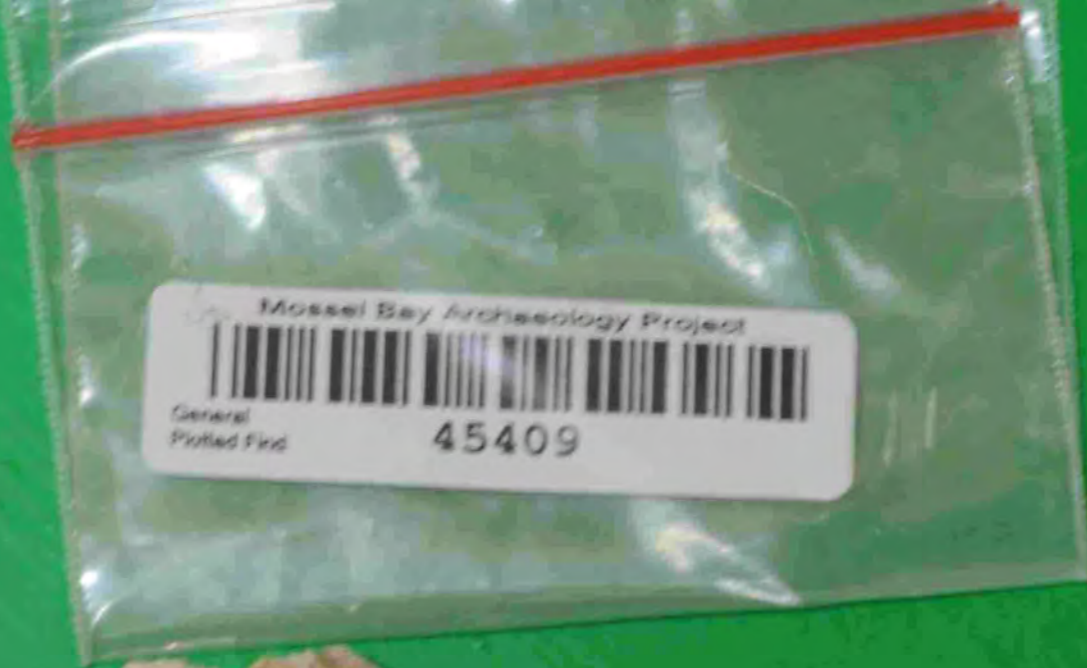
45264

Mossel Bay Site 13B
Sorted Material
Date 10 Oct 04
Square N 98 E 96
Unit Name W14Z Quad SE
Lot # 1383 Mesh Size PP
Category Fauna



45409

Mossel Bay Site 13B
Sorted Material Date 20 OCT 04
Square N04 E 94
Unit Name M4AP Quad SE
Lot # 1352 Mesh Size PP
Category FAUNA



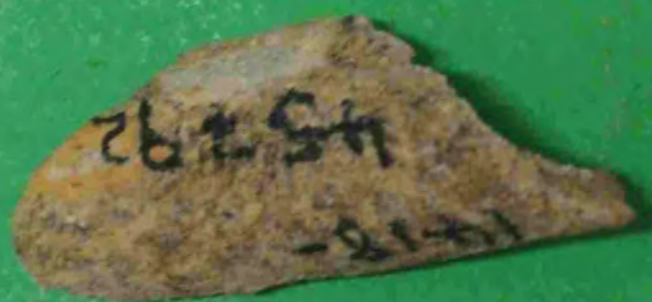
45713



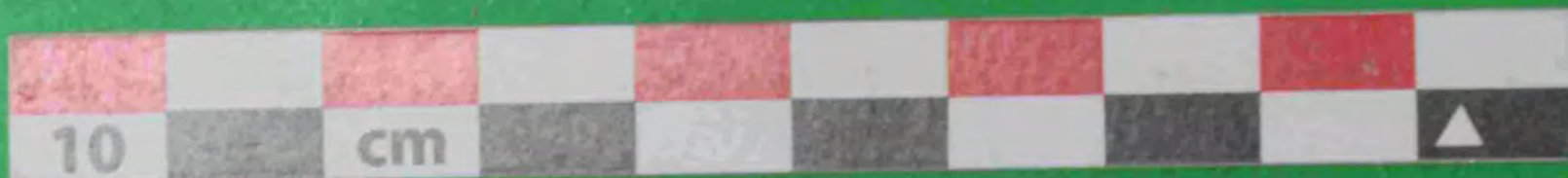
Mossel Bay Site 13B
Sorted Material Date 4 Nov 04
Square N 97 E 94
Unit Name W4CK Quad NE
Lot # 1417 Mesh Size PP
Category FAUNA 45713



45792



Mossel Bay Site 13B
Sorted Material Date 4 NOV 04
Square N 97 E 94
Unit Name W4AT2 Quad NE
Lot # 1418 Mesh Size PP
Category FAUNA 45792



52675



Mosser Bay Site 13B
Sorted Material Date 16 Nov 04
Square N 93 E 108
Unit Name E4BI Quad SW
Lot # 1114 Mesh Size PP
Category FAUNA



52943

Mossel Bay Site 13B
Sorted Material

Date 17 Nov 04

Square N 98 E 108

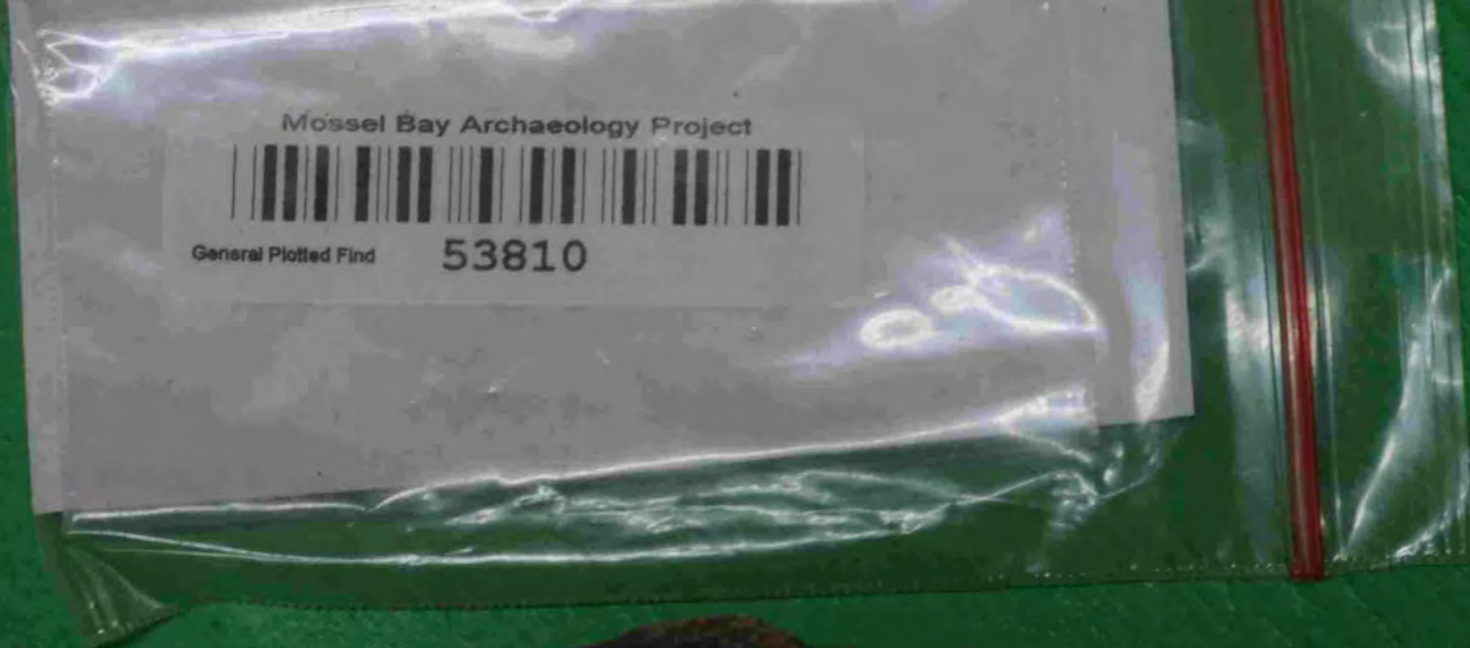
Unit Name E4BP Quad SW

Lot # 1117 Mesh Size PP

Category Fauna



53810



Mossel Bay Site 13B

Bucket Tag _____ Date 12/15/12

Square M9BE916 Quad SE

Strat Unit Name W/4'EM

Lot # _____

Mossel Bay Archaeology Project

Lot Number 1495



64546



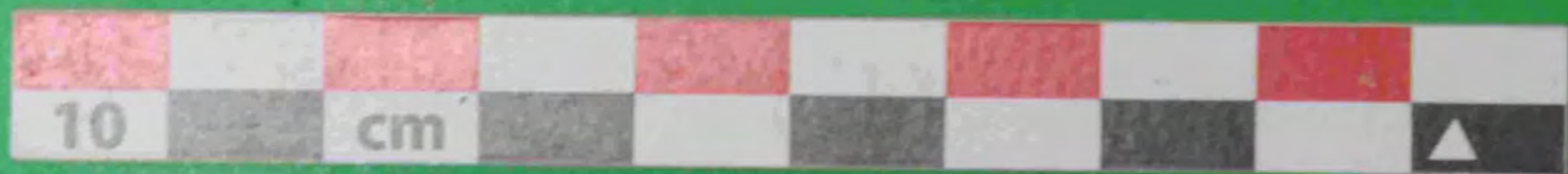
Mossel Bay Site 13B
Sorted Material Date 22 Nov '05

Square N 93 E 107

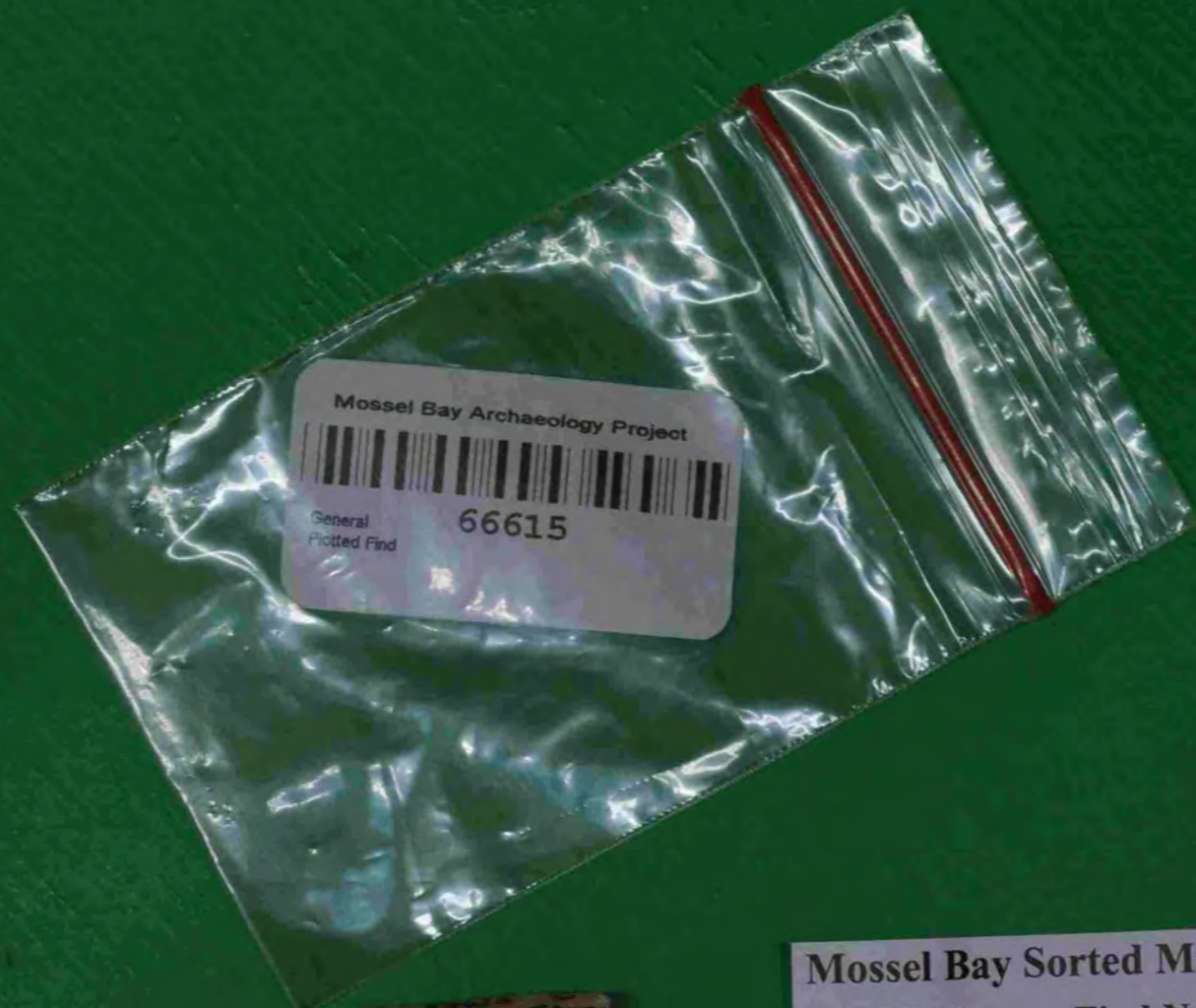
Unit Name EST Quad SW

Lot # 1572 Mesh Size P.P

Category Fauna 64546



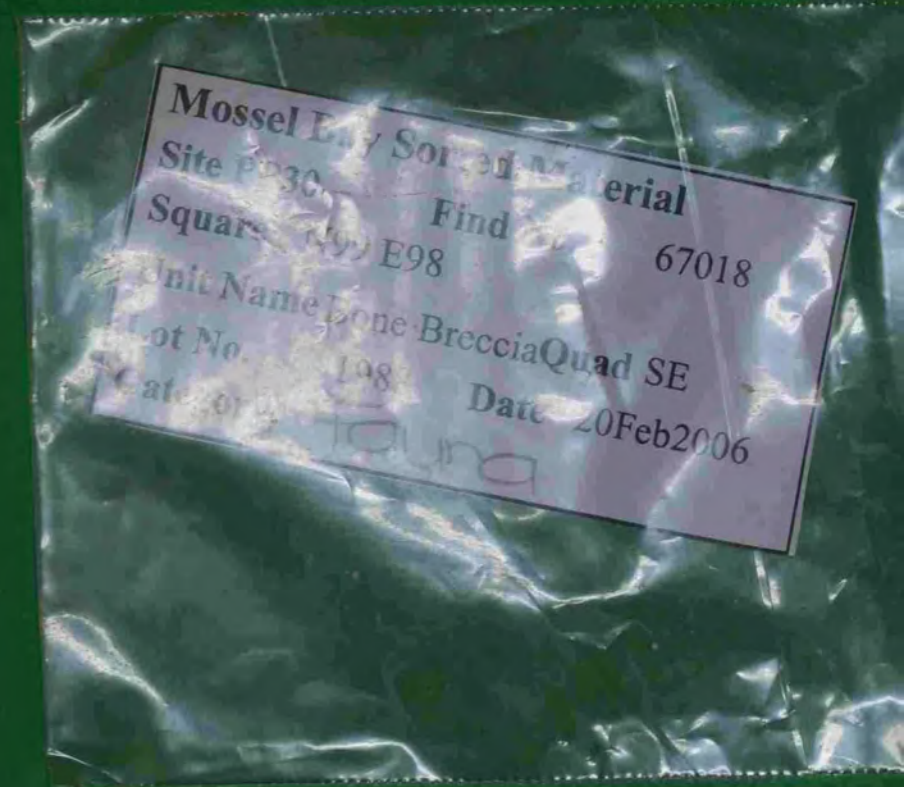
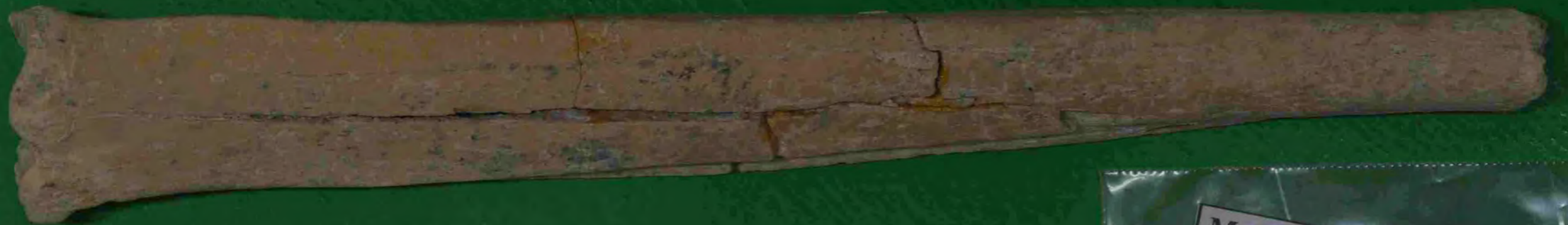
66615



Mossel Bay Sorted Material
Site PP30 Find No. 66615
Square N100.5 E96.5
Unit Name YB16 Quad NW
Lot No. 1931 Date 08Feb2006
Category: *fauna*



67018



67189



Mossel Bay Sorted Material

Site PP30 Find No. 67189
Square N100.5 E97
Unit Name YB51 Quad SW
Lot No. 2108 Date 23Feb2006
Category: *Fauna*



67209



Mossel Bay Sorted Material
Site PP30 Find No. 67209
Square N100.5 E98
Unit Name YB28 Quad SE
Lot No. 2097 Date 23Feb2006
Category: Fauna



67429



| | |
|--------------------|----------------|
| MA PCRMCc: | Site: 1250 |
| Sorted Material | Date: 03.21.06 |
| Square N 150 E 413 | |
| Unit Name YB 209 | Quad NW |
| Lot # 2133 | Mesh Size PP |
| Category Foundry | 67429 |

67768



89219

Mossel Bay Site : PP30

Sorted Material Date 10 Mar 2006

Square N 100.5 E 97.5

Unit Name YRISA Quad SW

Lot # 2100 Mesh Size PP

Category Fauna 67768.1



67838



MAPCRM cc: Site PP30
Bucket Tag Date: 5/23/06
Square N1005 97
Quad: NE
Strat Unit Name: 20 Trent
Lot #: 222
Lo Number PP30



Mossall Bay
Archaeology Project: **67838**
General Picked Find

67867

Mossel Bay Sorted Material
Site PP30 Find No. 67867
Square N100.5 E97
Unit Name YB52 Quad NE
Lot No. 2276 Date 15Mar2006
Category: *Fauna*



67923



MAPCRM cc: Site: PP30
Sorted Material Date 20.5.06
Square N _____ E _____
Unit Name Shanings Quad _____
Lot # 2701 Mesh Size PP
Category fauna 67923



80107



Mossel Bay Site 13B
Sorted Material Date 07 Dec 2005

Square N 95 E 109

Unit Name NESAX Quad SE

Lot # 1673 Mesh Size PP

Category FAUNA 80107

