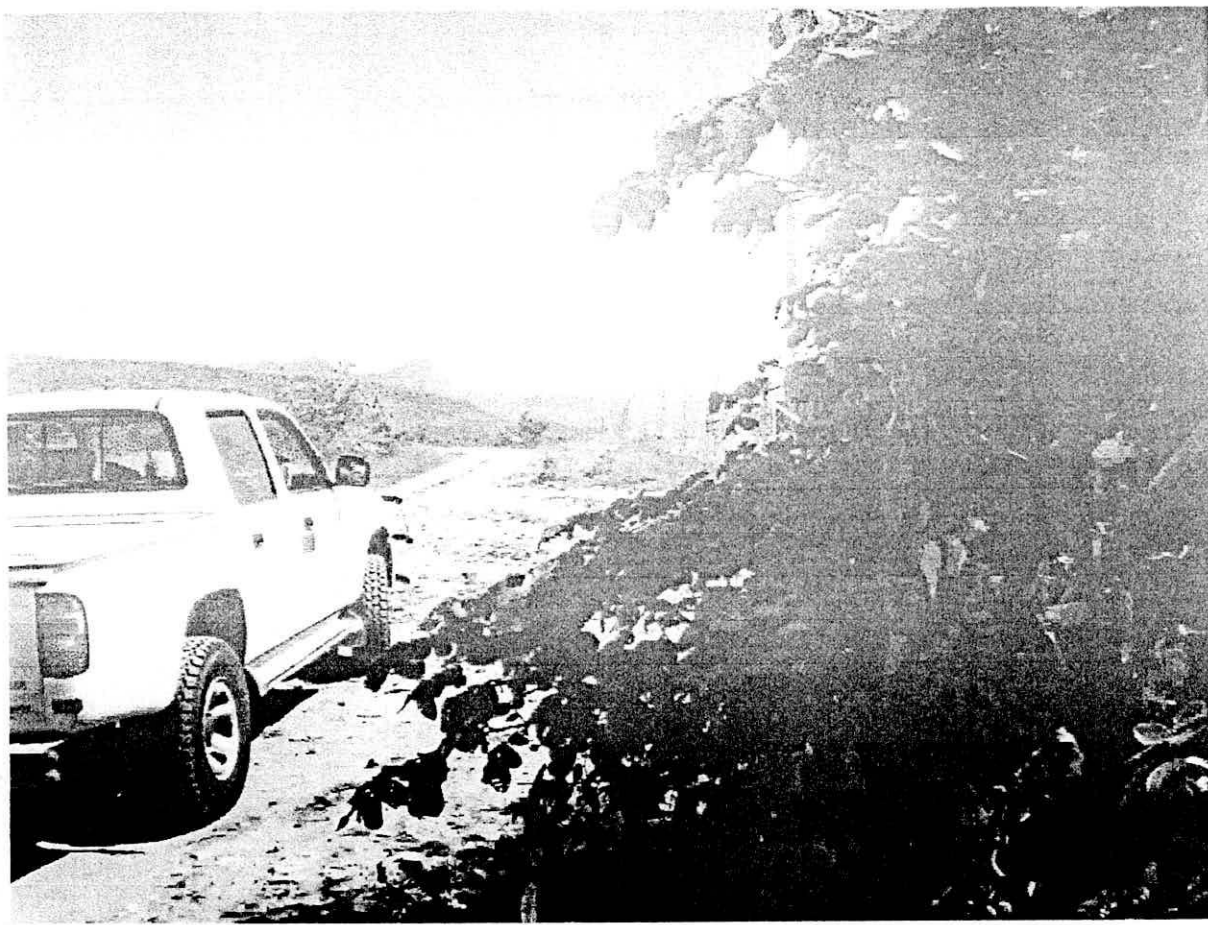
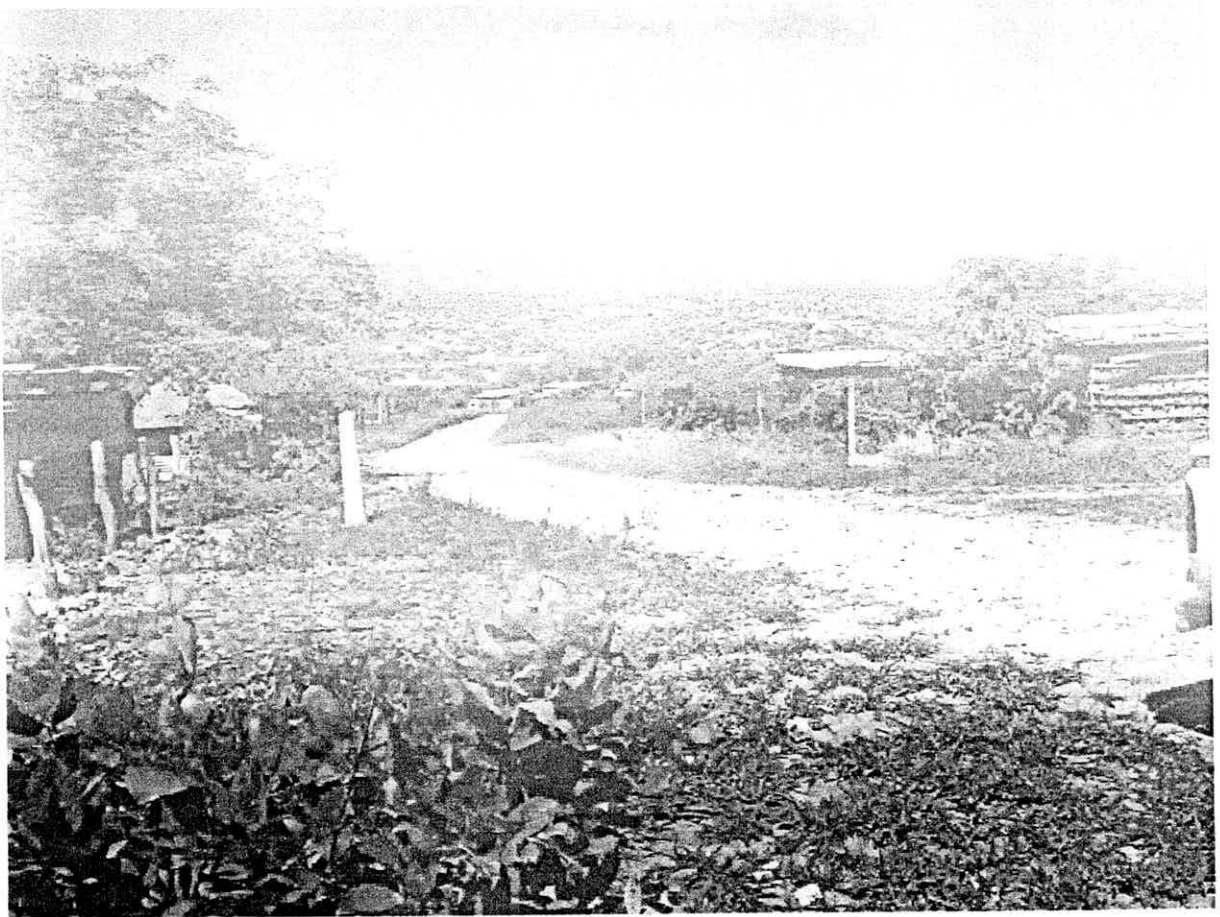


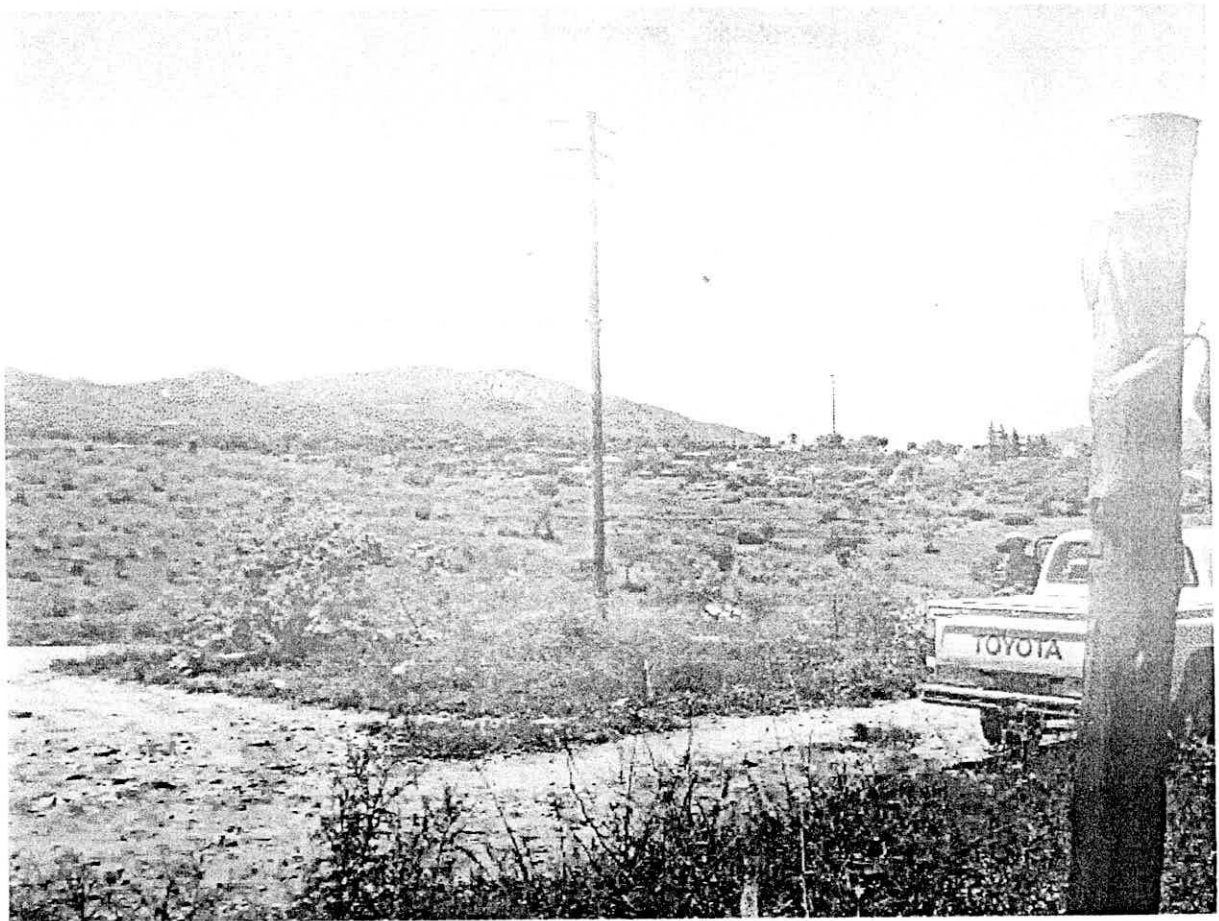
Cell C











LOCALITY PLAN



Datamw
Geographic Mapping Nelspruit
are not responsible for any errors
in external datasets displayed on this map.

SCALE 1:250 000

Information from official maps reproduced under Government printers copyright authority No. 4138 of 29/03/1969



Northern Region
Land Development

P.O.Box 1567
Nelspruit 1200
Tel 013 -755 9617
Fax 013 -755 9660

Feeder:	MATSULU B FEEDER 1	Surveyor:	JOSEPH GWEBU
Customer:	CELL C MATSULU B RESERVOIR	Geographic mapping:	ERINA VISAGIE
Project No:	KK12119	Date compiled:	15/12/2004
Length of line:	0.549km	Revised by:	
Portion of map no:	2530	Revision date:	
Page:	1 of 4		

DASHED RED LINE INDICATES POWERLINE ROUTE

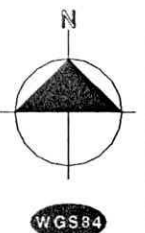


Route plan
Northern Region

Disclaimer
Geographic Mapping Houtekruit
are not responsible for any errors
in external datasets displayed on this map.
The following external datasets were used:
Cadastral
Topographical

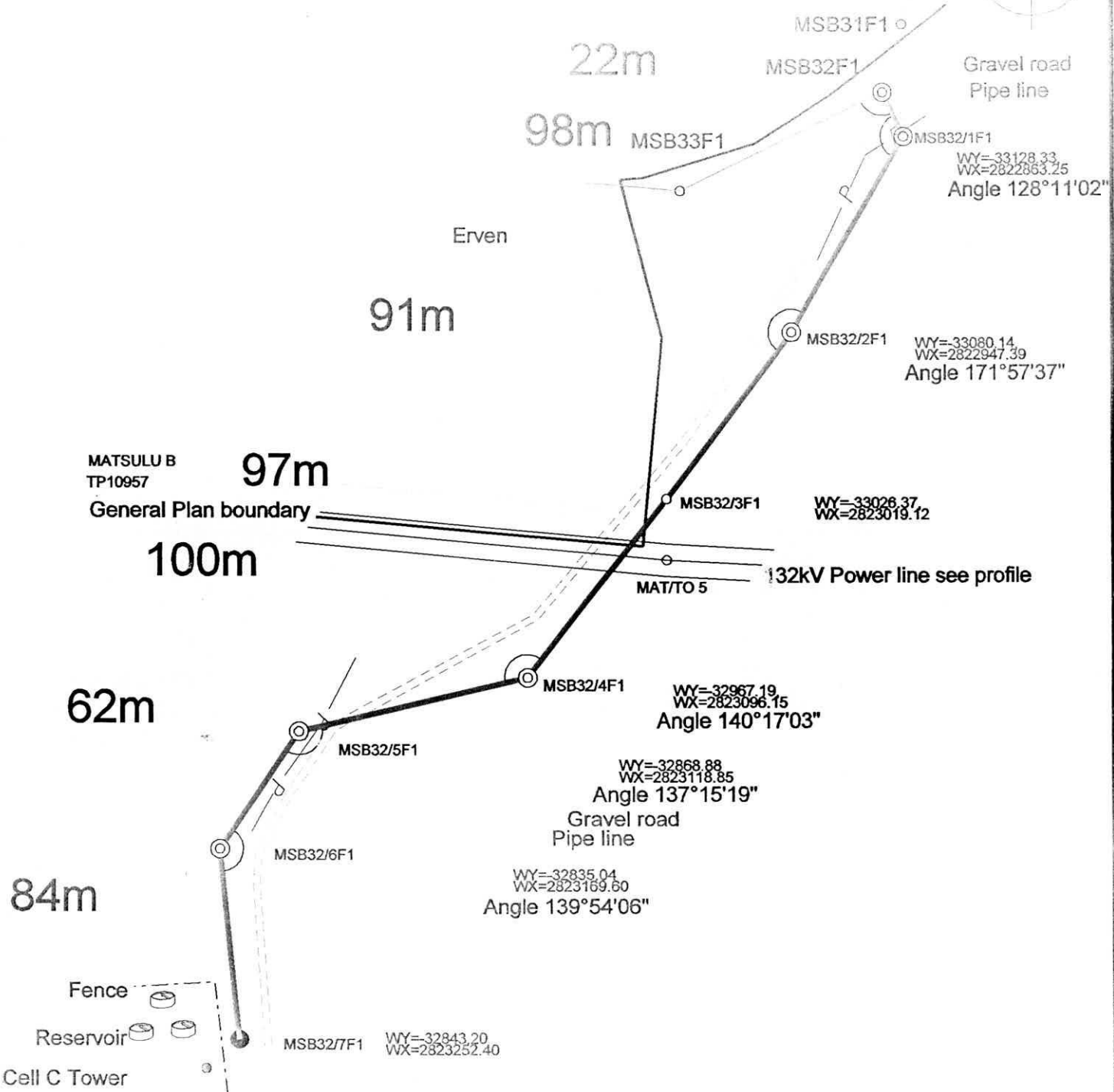
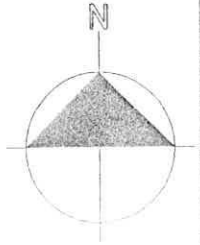
Feeder: MATSULU B FEEDER 1
Customer: CELL C MATSULU B RESERVOIR
Project No: KK12119
FSA / TSA Area: KANYAMAZANE

Portion of map no:
Scale: 1:25 000





Pole no: MSB32F1
Tee off angle 87°16'31"
MATSULU B FEEDER1 22kV
WY=-33119.25,WX=2822844.21



MATSULU B
TP10957

General Plan boundary

132kV Power line see profile

MAT/TO 5

62m

MSB32/5F1

WY=-32967.19
WX=2823096.15
Angle 140°17'03"

WY=-32868.88
WX=2823118.85
Angle 137°15'19"

Gravel road
Pipe line

MSB32/6F1

WY=-32835.04
WX=2823169.60
Angle 139°54'06"

84m

Fence

Reservoir

Cell C Tower

MSB32/7F1 WY=-32843.20
WX=2823232.40

25kVA 30

Project no: KK12119

CELL C MATSULU B RESERVOIR

REMAINDER

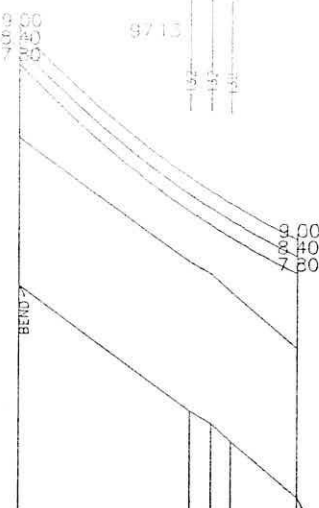
MATSULU 543-JU

MSB32F1

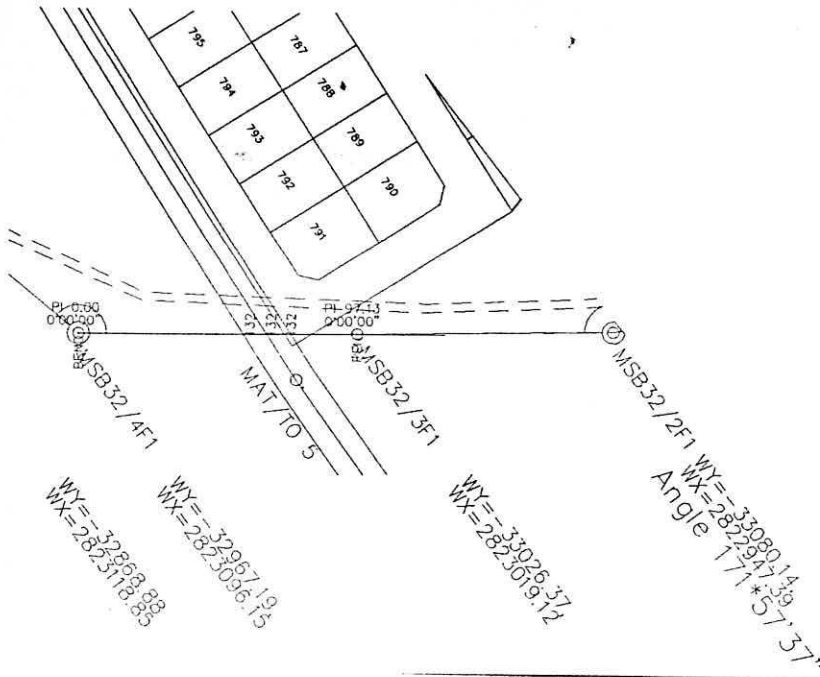
9.11m	—
8.60m	—
8.11m	—

1 1715m160.011
X=33026.37
Y=-2823096.15

2 1715m160.011
X=33026.37
Y=-2823096.15



Station	0.00	60.12	67.40	74.22	Station
Elevation	100.00	95.82	95.19	94.56	Elevation



REMAINDER MATSULU 543-JU

2500 m
Horiz. Scale

250 m
Vert. Scale

Conductor: FOX Templating Temp. 50°C	PROJECT NAME Project no: KK12119	Surveyed by: GWEBU	Rev. 0 Rev. Date: 07-02-2002
Shielding Wire: N/A		Optimised by: S LABUSCHAGNE	Date Printed: 2004/12/17 09:28:23 Page: 1 of 1
Ground Tolerance: 0.0 m	ESKOM DISTRIBUTION NORTHERN REGION	Approved by:	File Name: KK12119

NmL10370



