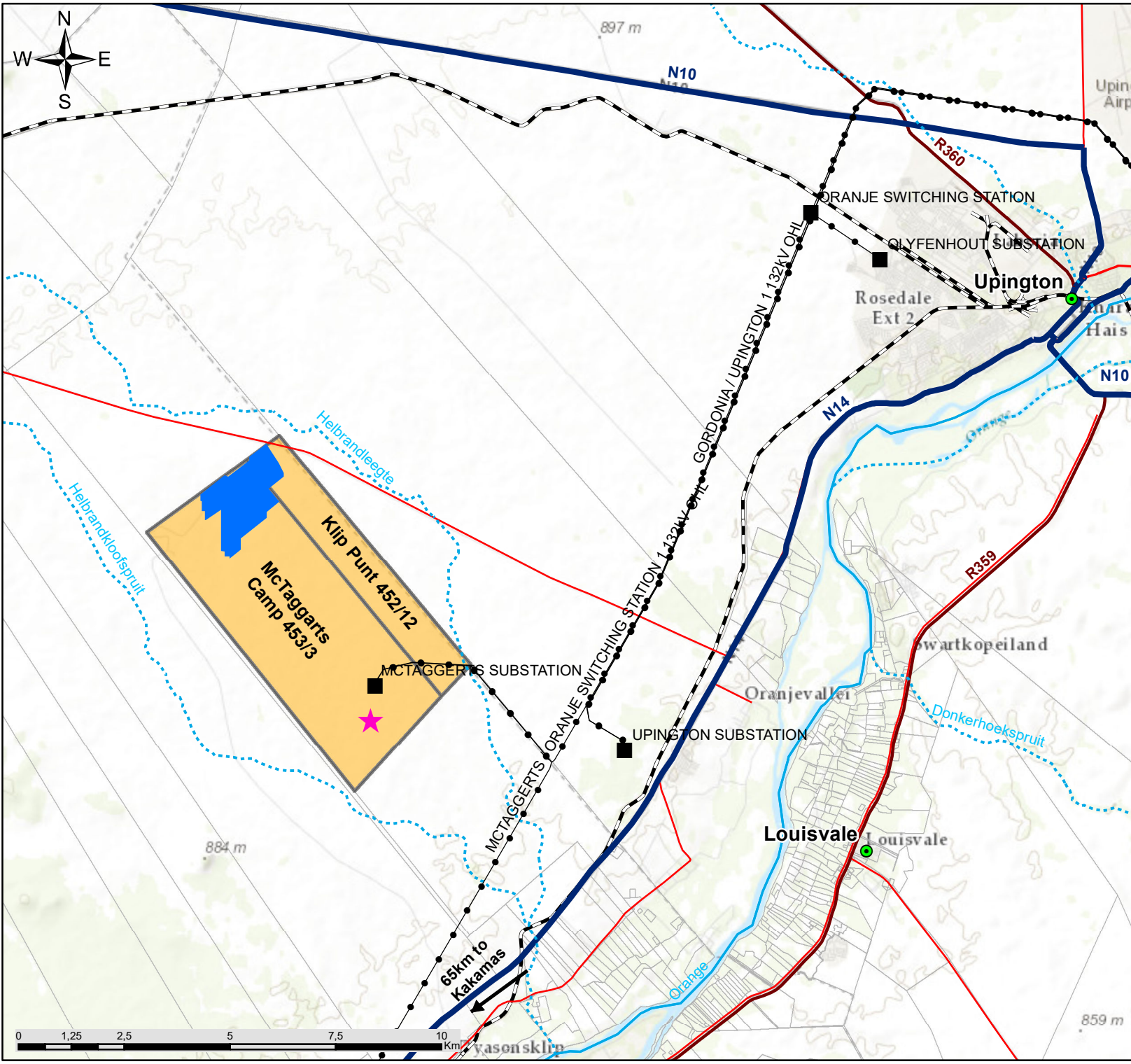


Appendix M: A3 Maps & Coordinates

Development Area Coordinates

	Latitude	Longitude
01	28°30'30.19"S	21° 2'34.99"E
02	28°30'23.25"S	21° 2'44.80"E
03	28°30'14.57"S	21° 2'44.80"E
04	28°29'59.02"S	21° 3'7.13"E
05	28°29'54.54"S	21° 3'7.08"E
06	28°29'46.67"S	21° 3'18.25"E
07	28°29'36.64"S	21° 3'8.58"E
08	28°29'27.24"S	28°29'27.24"S
09	28°29'24.30"S	21° 3'22.15"E
10	28°29'17.26"S	21° 3'17.98"E
11	28°29'2.19"S	21° 3'6.89"E
12	28°29'11.94"S	21° 2'52.11"E
13	28°29'15.02"S	21° 2'52.03"E
14	28°29'27.33"S	21° 2'33.82"E
15	28°29'26.31"S	21° 2'30.75"E
16	28°29'41.19"S	21° 2'9.56"E
17	28°29'46.10"S	21° 2'9.56"E
18	28°29'46.07"S	21° 2'10.64"E
19	28°29'53.90"S	21° 2'10.76"E
20	28°29'53.92"S	21° 2'13.49"E
21	28°30'0.59"S	21° 2'13.43"E
22	28°30'0.55"S	21° 2'14.50"E
23	28°29'52.67"S	21° 2'27.67"E
24	28°29'52.94"S	21° 2'27.48"E
25	28°30'24.61"S	21° 2'27.54"E
26	28°30'24.55"S	21° 2'30.68"E
27	28°30'28.42"S	21° 2'30.71"E
28	28°30'28.49"S	21° 2'35.04"E
Centre Point Coordinates	28°29'45.42"S	21° 2'48.25"E



McTaggarts PV3, Northern Cape Province

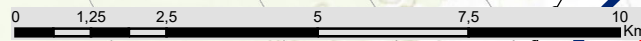
Locality Map

Legend

- Town
- Eskom Substations
- ★ Kwi Solar 1 CSP Facility (existing)
- Eskom Power Line
- Perennial River
- - - Non-perennial River
- National Route
- Regional Road
- Main Road
- - - Railway Line
- McTaggarts PV3 Development Area (~260ha)
- Broader Study Area
- Farm Portions

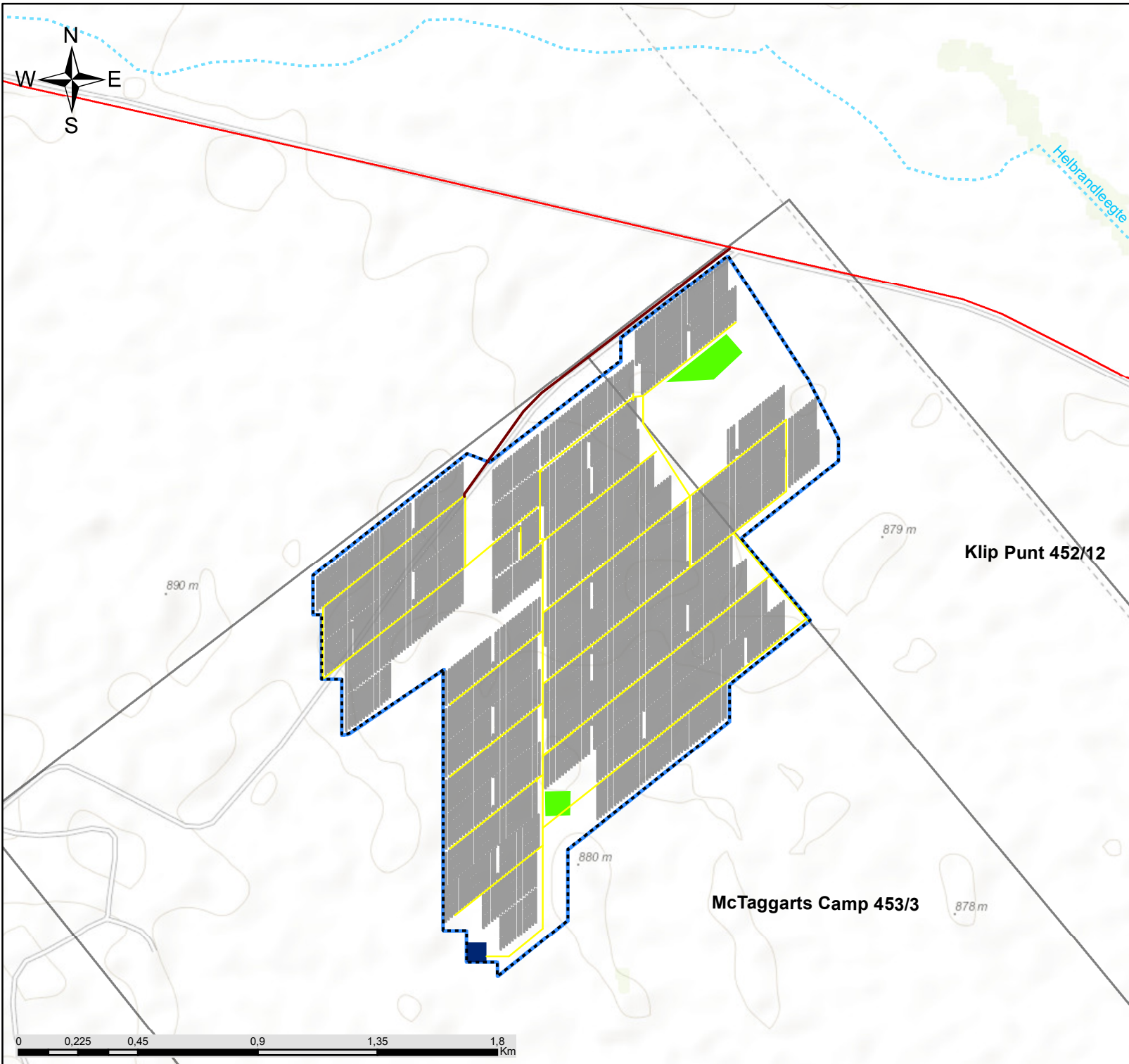


Scale: 1:125 000
 Projection: LO21
 Ref: McTaggarts PV3 - Locality Map 18.10.19



McTaggarts PV3, Northern Cape Province

Layout Map



Legend

- Non-perennial River
- Main Road
- Study Area

Layout

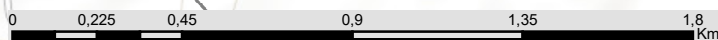
- Access Road
- Fence
- Internal Access Roads
- Buildings and Laydown Area
- On-Site Substation
- Solar Panel Area
- Development Area (~260ha)

Klip Punt 452/12

McTaggarts Camp 453/3

savannah
environmental

Scale: 1:20 000
Projection: LO21
Ref: McTaggarts PV3 - Layout Map 25.10.19





McTaggarts PV3, Northern Cape Province

Environmental Feature and Layout Map

Legend

- Main road
- Non-perennial river
- Development area (~260ha)

Layout

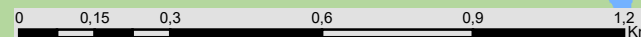
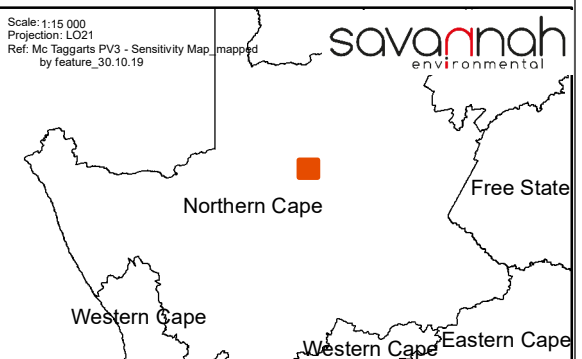
- Access road
- Fence
- Internal access roads
- On-site substation
- Buildings and laydown area
- Solar panel area

Environmental Features

- Heritage resources
- Korhaan habitat
- Drainage line
- Poorly developed drainage line
- Pan
- Plains
- Transformed

Scale: 1:15 000
Projection: LO21
Ref: Mc Taggarts PV3 - Sensitivity Map, mapped
by Feature_30.10.19

savannah
environmental





McTaggart's PV3, Northern Cape Province

Environmental Sensitivity and Layout Map

Legend

- Main road
- Non-perennial river
- Development area (~260ha)

Layout

- Access road
- Fence
- Internal access roads
- On-site substation
- Buildings and laydown area
- Solar panel area

Environmental Sensitivity

- Low heritage sensitivity
- Very high sensitivity (no-go)(Avifauna, Ecological and Aquatic)
- High sensitivity (Avifauna, Ecological and Aquatic)
- Medium high sensitivity (Avifauna)
- Medium sensitivity (Avifauna)
- Transformed

Scale: 1:15 000
Projection: LO21
Ref: Mc Taggart's PV3 - Sensitivity Map, mapped
by sensitivity_30.10.19

savannah
environmental

