

McTaggarts PV3, Northern Cape Province

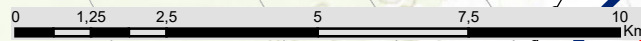
Locality Map

Legend

- Town
- Eskom Substations
- ★ Kwi Solar 1 CSP Facility (existing)
- Eskom Power Line
- Perennial River
- - - Non-perennial River
- National Route
- Regional Road
- Main Road
- - - Railway Line
- McTaggarts PV3 Development Area (~260ha)
- Broader Study Area
- Farm Portions

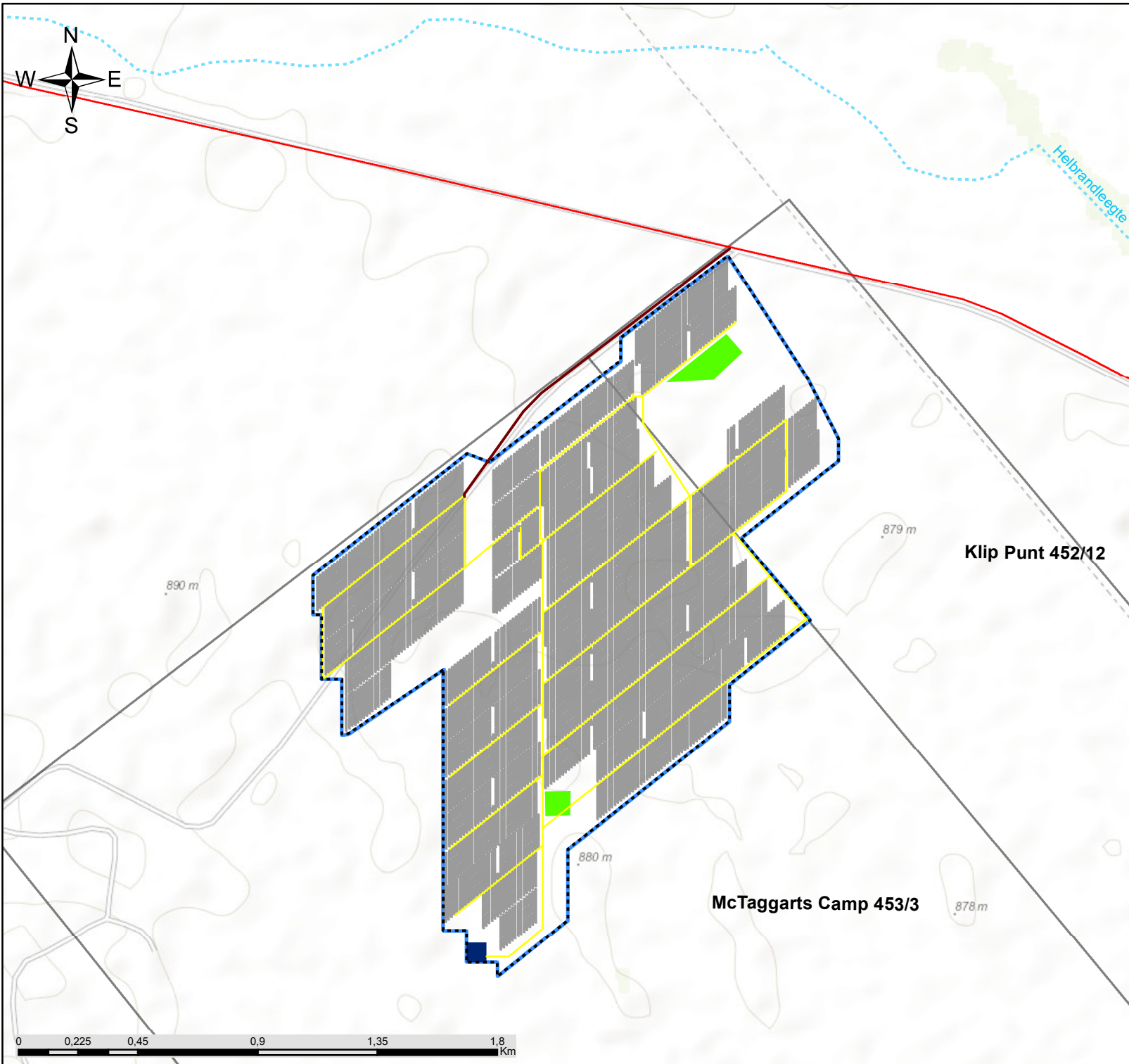


Scale: 1:125 000
 Projection: LO21
 Ref: McTaggarts PV3 - Locality Map 18.10.19



McTaggarts PV3, Northern Cape Province

Layout Map



Legend

- Non-perennial River
- Main Road
- Study Area

Layout

- Access Road
- Fence
- Internal Access Roads
- Buildings and Laydown Area
- On-Site Substation
- Solar Panel Area
- Development Area (~260ha)

Klip Punt 452/12

McTaggarts Camp 453/3

savannah
environmental

Scale: 1:20 000
Projection: LO21
Ref: McTaggarts PV3 - Layout Map 25.10.19





McTaggarts PV3, Northern Cape Province

Environmental Feature and Layout Map

Legend

- Main road
- Non-perennial river
- Development area (~260ha)

Layout

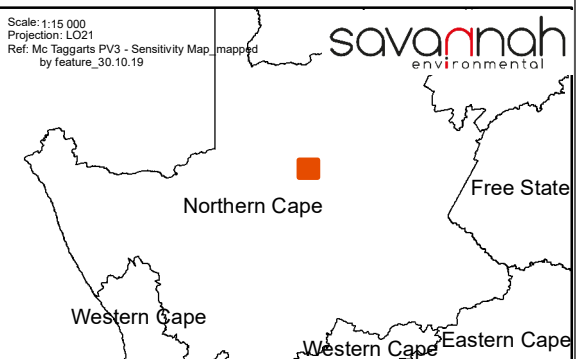
- Access road
- Fence
- Internal access roads
- On-site substation
- Buildings and laydown area
- Solar panel area

Environmental Features

- Heritage resources
- Korhaan habitat
- Drainage line
- Poorly developed drainage line
- Pan
- Plains
- Transformed

Scale: 1:15 000
Projection: LO21
Ref: Mc Taggarts PV3 - Sensitivity Map, mapped
by Feature_30.10.19

savannah
environmental





McTaggart's PV3, Northern Cape Province

Environmental Sensitivity and Layout Map

Legend

- Main road
- Non-perennial river
- Development area (~260ha)

Layout

- Access road
- Fence
- Internal access roads
- On-site substation
- Buildings and laydown area
- Solar panel area

Environmental Sensitivity

- Low heritage sensitivity
- Very high sensitivity (no-go)(Avifauna, Ecological and Aquatic)
- High sensitivity (Avifauna, Ecological and Aquatic)
- Medium high sensitivity (Avifauna)
- Medium sensitivity (Avifauna)
- Transformed

Scale: 1:15 000
Projection: LO21
Ref: Mc Taggart's PV3 - Sensitivity Map, mapped
by sensitivity_30.10.19

savannah
environmental

