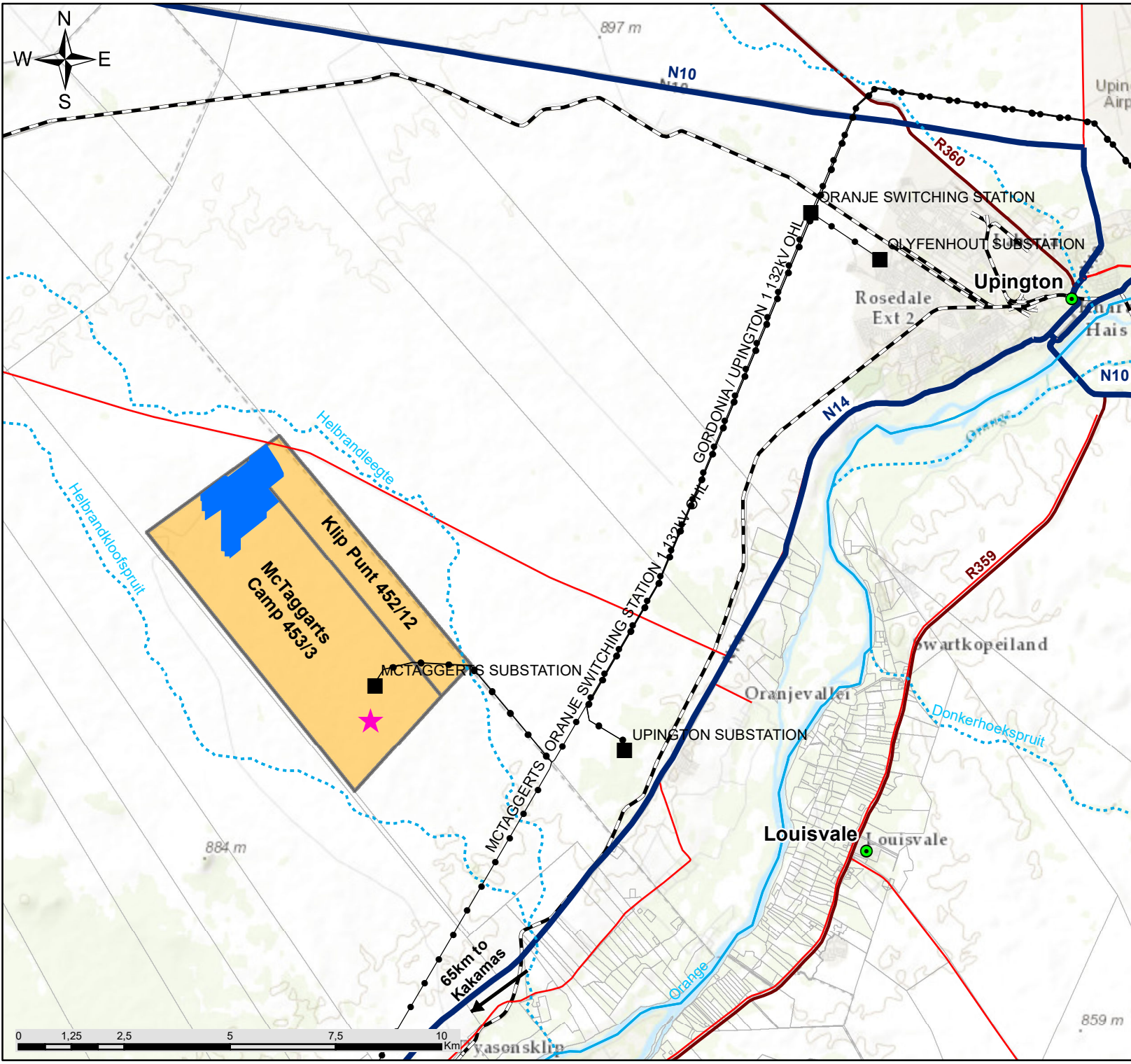


**Appendix O: A3 Maps & Coordinates**

Development Area Coordinates

	<b>Latitude</b>	<b>Longitude</b>
<b>01</b>	28°30'30.19"S	21° 2'34.99"E
<b>02</b>	28°30'23.25"S	21° 2'44.80"E
<b>03</b>	28°30'14.57"S	21° 2'44.80"E
<b>04</b>	28°29'59.02"S	21° 3'7.13"E
<b>05</b>	28°29'54.54"S	21° 3'7.08"E
<b>06</b>	28°29'46.67"S	21° 3'18.25"E
<b>07</b>	28°29'36.64"S	21° 3'8.58"E
<b>08</b>	28°29'27.24"S	28°29'27.24"S
<b>09</b>	28°29'24.30"S	21° 3'22.15"E
<b>10</b>	28°29'17.26"S	21° 3'17.98"E
<b>11</b>	28°29'2.19"S	21° 3'6.89"E
<b>12</b>	28°29'11.94"S	21° 2'52.11"E
<b>13</b>	28°29'15.02"S	21° 2'52.03"E
<b>14</b>	28°29'27.33"S	21° 2'33.82"E
<b>15</b>	28°29'26.31"S	21° 2'30.75"E
<b>16</b>	28°29'41.19"S	21° 2'9.56"E
<b>17</b>	28°29'46.10"S	21° 2'9.56"E
<b>18</b>	28°29'46.07"S	21° 2'10.64"E
<b>19</b>	28°29'53.90"S	21° 2'10.76"E
<b>20</b>	28°29'53.92"S	21° 2'13.49"E
<b>21</b>	28°30'0.59"S	21° 2'13.43"E
<b>22</b>	28°30'0.55"S	21° 2'14.50"E
<b>23</b>	28°29'52.67"S	21° 2'27.67"E
<b>24</b>	28°29'52.94"S	21° 2'27.48"E
<b>25</b>	28°30'24.61"S	21° 2'27.54"E
<b>26</b>	28°30'24.55"S	21° 2'30.68"E
<b>27</b>	28°30'28.42"S	21° 2'30.71"E
<b>28</b>	28°30'28.49"S	21° 2'35.04"E
<b>Centre Point Coordinates</b>	28°29'45.42"S	21° 2'48.25"E



# McTaggarts PV3, Northern Cape Province

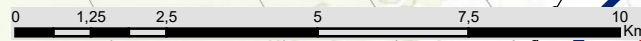
## Locality Map

### Legend

- Town
- Eskom Substations
- ★ Kwi Solar 1 CSP Facility (existing)
- Eskom Power Line
- Perennial River
- - - Non-perennial River
- National Route
- Regional Road
- Main Road
- - - Railway Line
- McTaggarts PV3 Development Area (~260ha)
- Broader Study Area
- Farm Portions

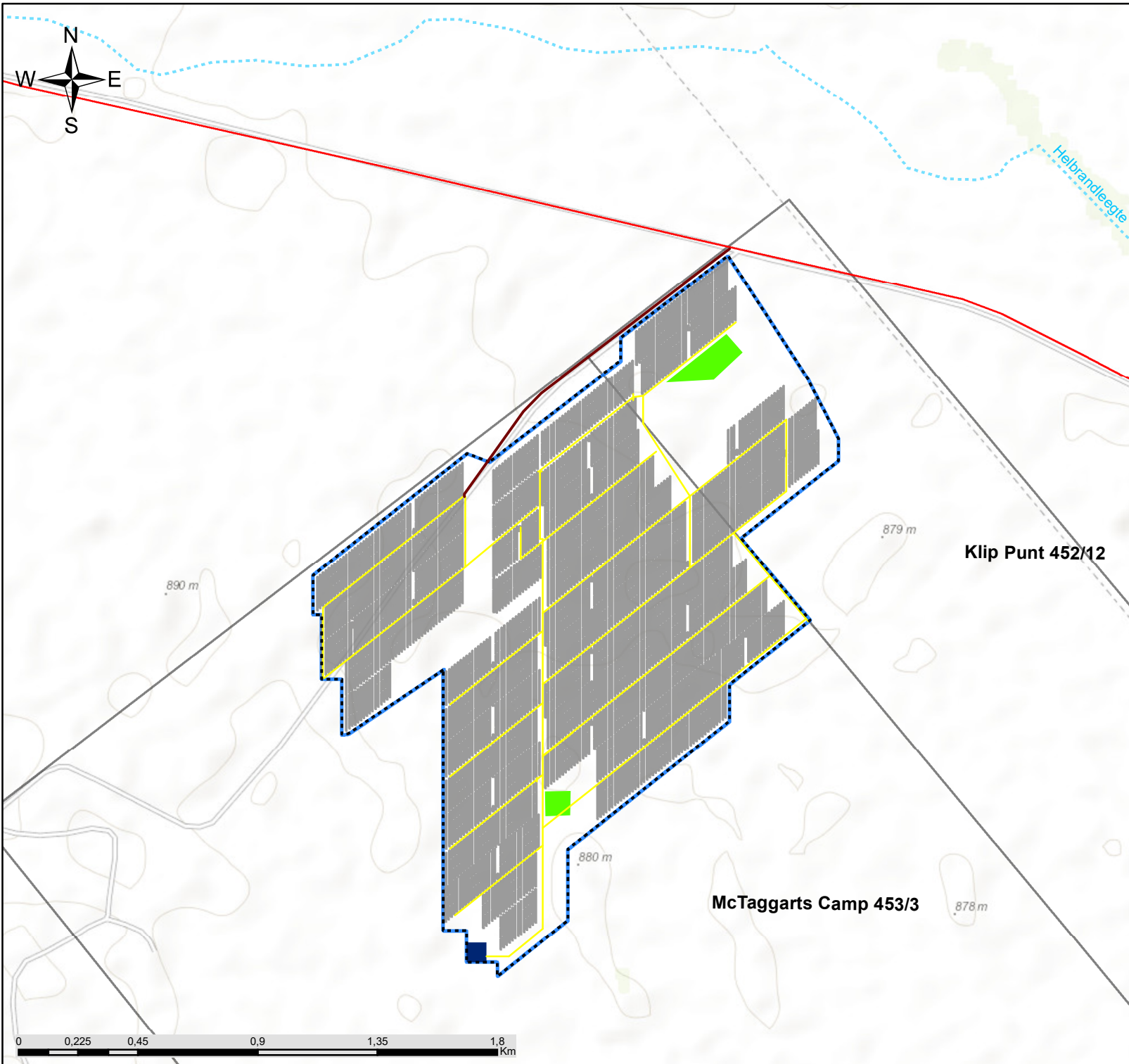


Scale: 1:125 000  
 Projection: LO21  
 Ref: McTaggarts PV3 - Locality Map 18.10.19



# McTaggarts PV3, Northern Cape Province

## Layout Map



### Legend

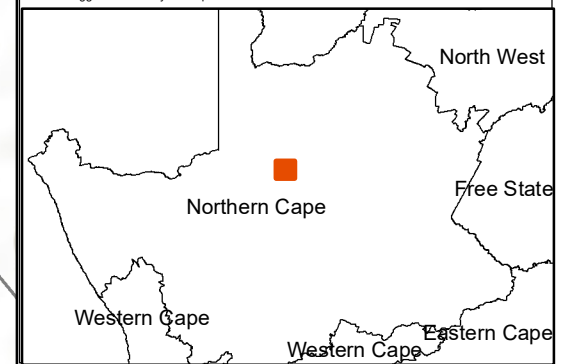
- Non-perennial River
- Main Road
- Study Area

### Layout

- Access Road
- Fence
- Internal Access Roads
- Buildings and Laydown Area
- On-Site Substation
- Solar Panel Area
- Development Area (~260ha)

savannah  
environmental

Scale: 1:20 000  
Projection: LO21  
Ref: McTaggarts PV3 - Layout Map 25.10.19



0 0,225 0,45 0,9 1,35 1,8 Km





# McTaggarts PV3, Northern Cape Province

## Environmental Feature and Layout Map

### Legend

- Main road
- Non-perennial river
- Development area (~260ha)

### Layout

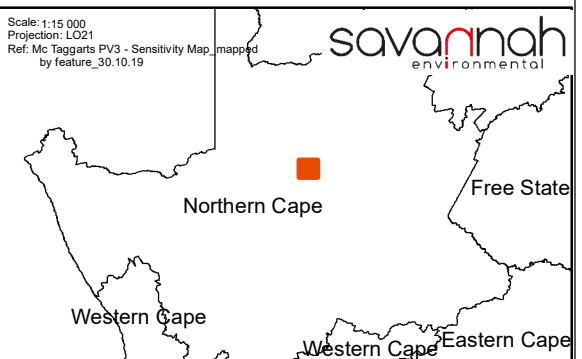
- Access road
- Fence
- Internal access roads
- On-site substation
- Buildings and laydown area
- Solar panel area

### Environmental Features

- Heritage resources
- Korhaan habitat
- Drainage line
- Poorly developed drainage line
- Pan
- Plains
- Transformed

Scale: 1:15 000  
Projection: LO21  
Ref: Mc Taggarts PV3 - Sensitivity Map, mapped  
by Feature\_30.10.19

savannah  
environmental





# McTaggart's PV3, Northern Cape Province

## Environmental Sensitivity and Layout Map

### Legend

- Main road
- Non-perennial river
- Development area (~260ha)

### Layout

- Access road
- Fence
- Internal access roads
- On-site substation
- Buildings and laydown area
- Solar panel area

### Environmental Sensitivity

- Low heritage sensitivity
- Very high sensitivity (no-go)(Avifauna, Ecological and Aquatic)
- High sensitivity (Avifauna, Ecological and Aquatic)
- Medium high sensitivity (Avifauna)
- Medium sensitivity (Avifauna)
- Transformed

Scale: 1:15 000  
Projection: LO21  
Ref: Mc Taggart's PV3 - Sensitivity Map, mapped  
by sensitivity\_30.10.19

savannah  
environmental

