

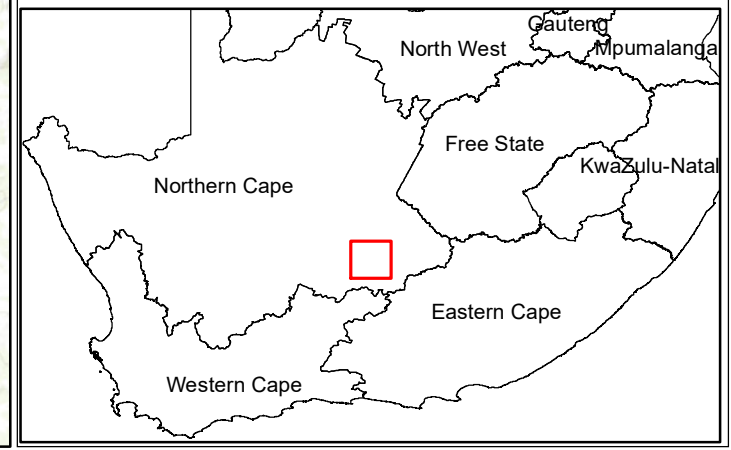
Merino Wind Energy Facility Richmond, Northern Cape Province

Locality Map

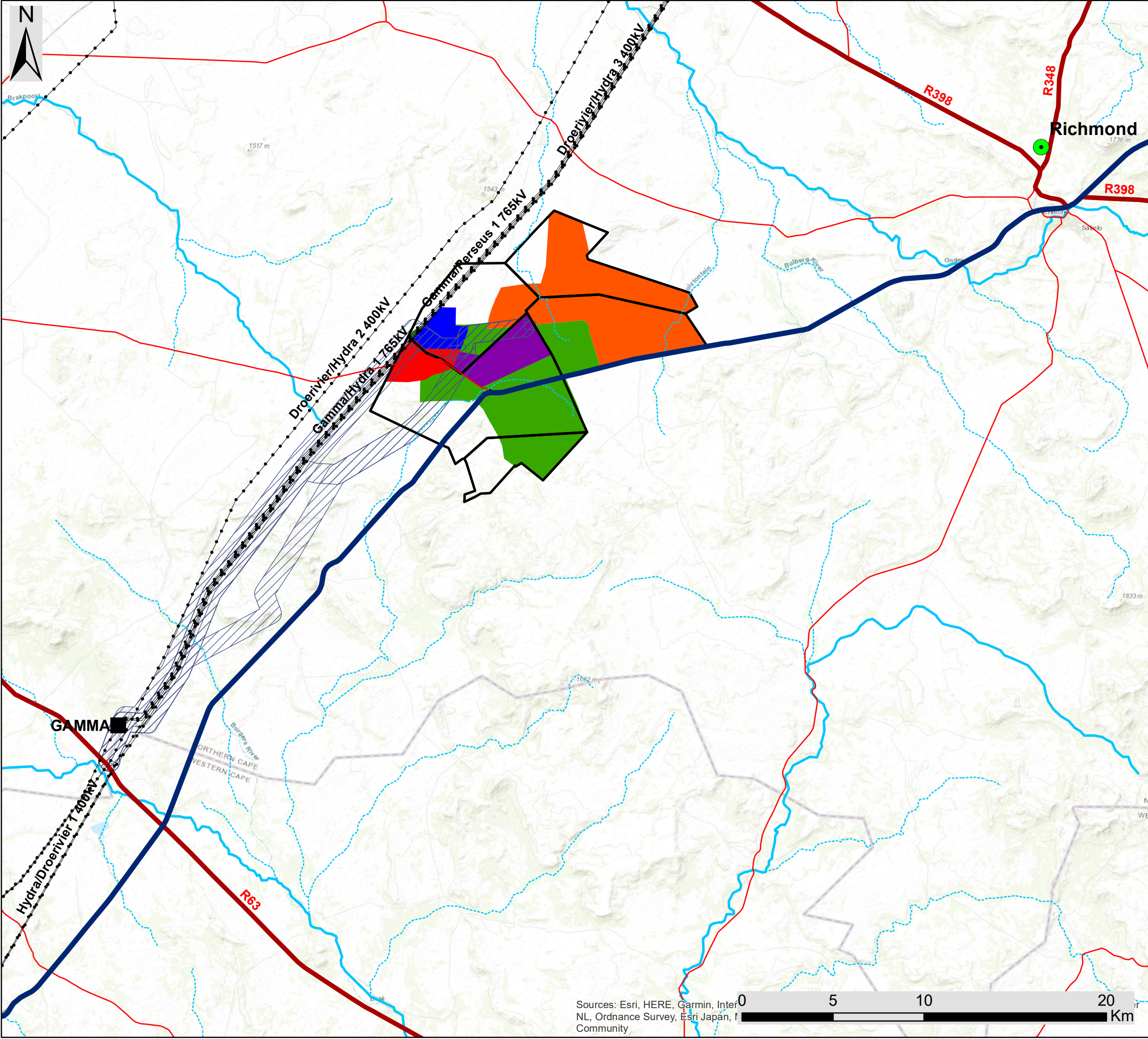
Legend

- Town
- Eskom Substation
- Existing Power Line
- National Road
- Regional Road
- Main Road
- Non-Perennial River
- Perennial River
- Project Site
- Merino Wind Energy Facility Development Area

Scale: 1: 250 000
 Projection: WGS_1984
 Map Ref: MerinoWEF - Locality



Sources: Esri, HERE, Garmin, InterNL, Ordnance Survey, Esri Japan, ICommunity



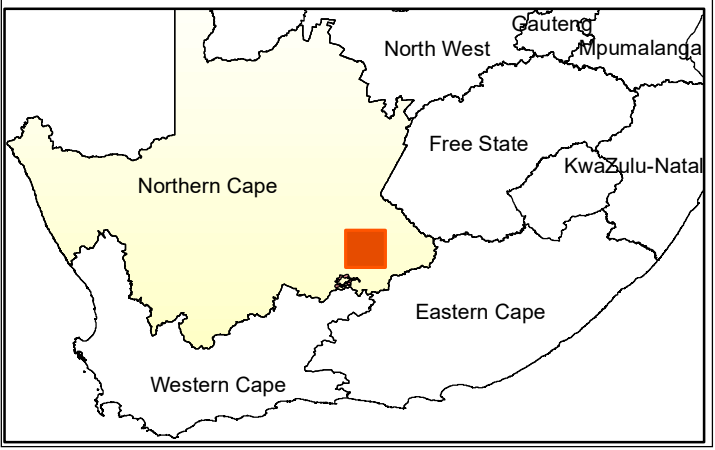
Proposed Greater Karoo Renewable Energy Cluster, Richmond, Northern Cape Province

Locality Map

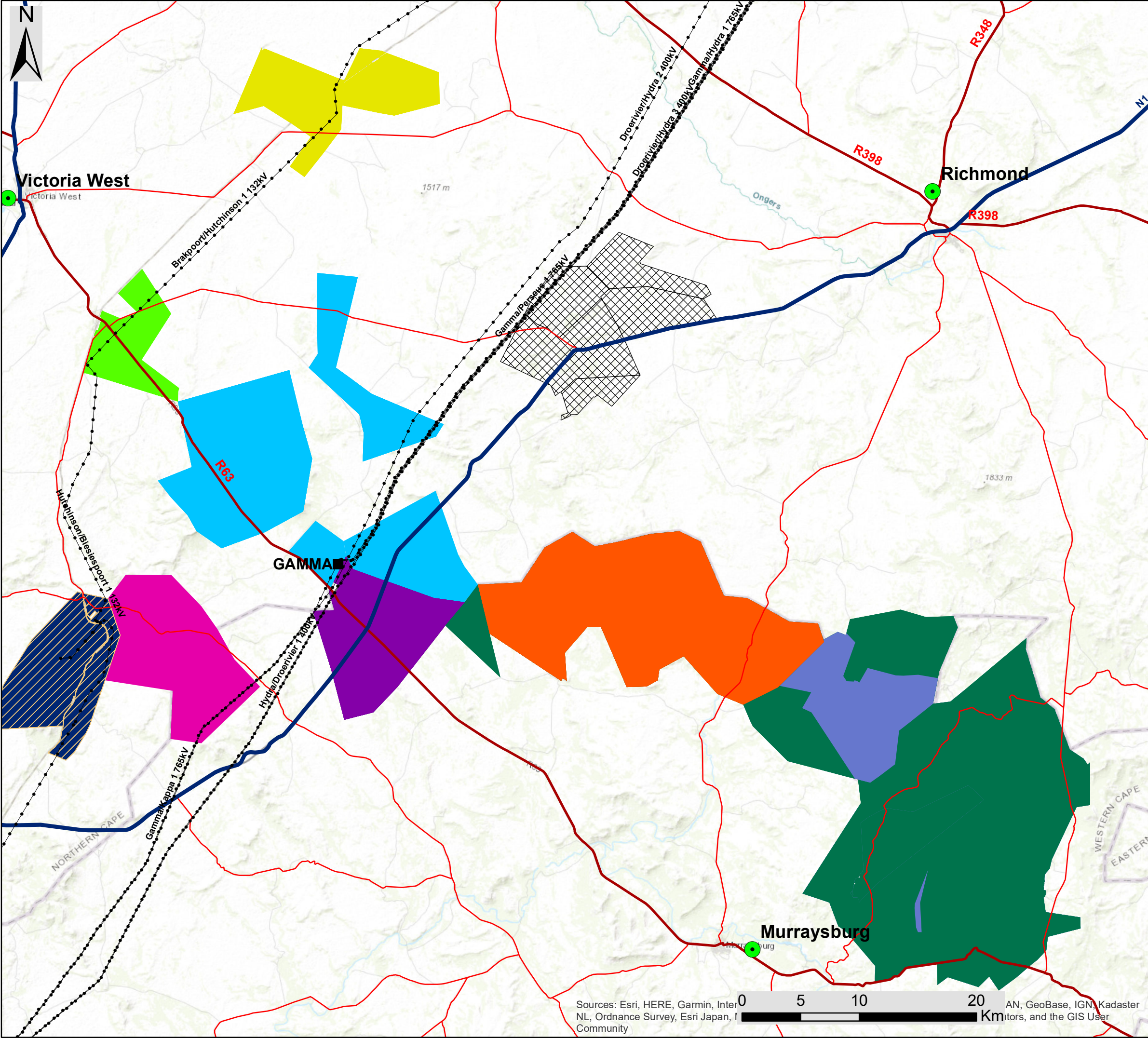
Legend

- Town
- Eskom Substation
- Existing Power Line
- National Road
- Regional Road
- Main Road
- Non-Perennial River
- Perennial River
- Grid Connection Corridor Alternatives (1km wide)
- Nku Solar PV
- Moriri Solar PV
- Kwana Solar PV
- Angora Wind Energy Facility
- Merino Wind Energy Facility
- Project Sites

Scale: 1: 250 000
 Projection: WGS_1984
 Map Ref: Great Karoo BID - Locality



Sources: Esri, HERE, Garmin, InterNL, Ordnance Survey, Esri Japan, Community
 0 5 10 20 Km



Proposed Greater Karoo Renewable Energy Cluster, Richmond, Northern Cape Province

Cumulative Map

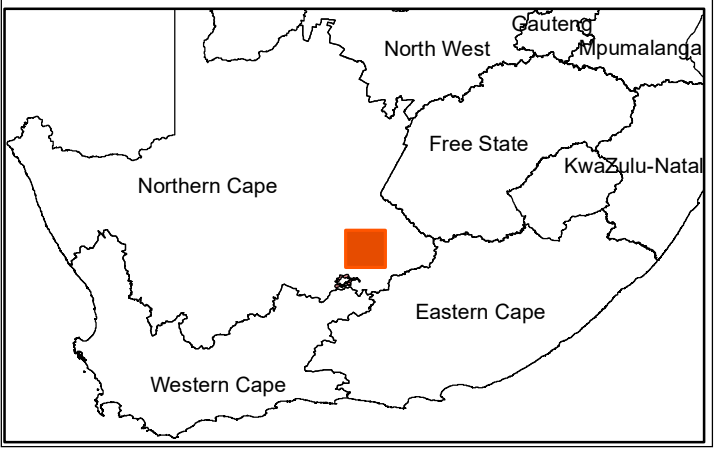
Legend

- Town
- Eskom Substation
- Existing Power Line
- National Road
- Regional Road
- Main Road
- Great Karoo Renewable Energy Cluster

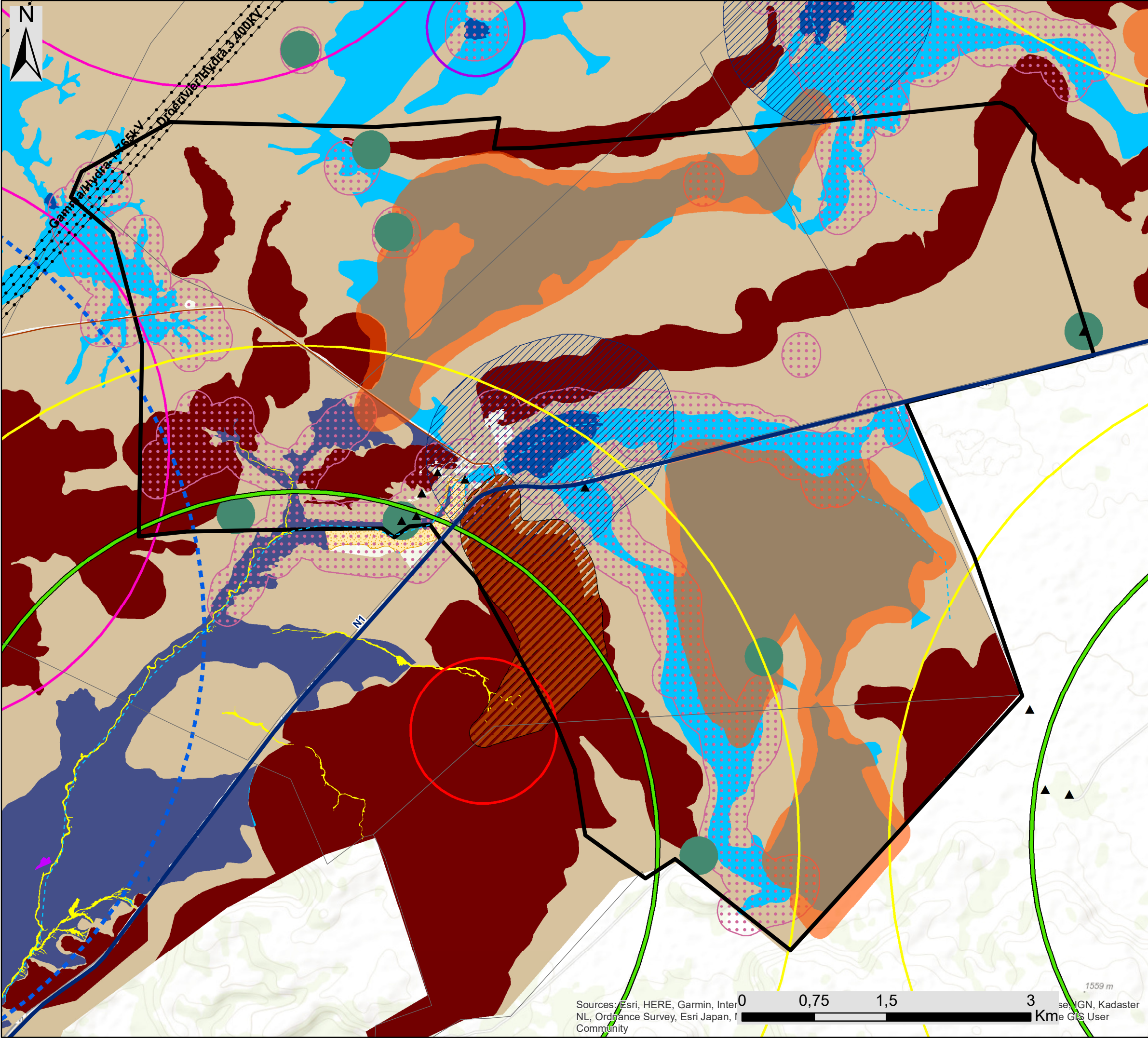
Known Authorised Renewable Energy Facilities (based on affected property)

- Nobelsfield Wind Energy Facility
- Bietjiesfontein Solar Energy Facility
- Karoo Renewable Energy Facility
- Brakpoort Solar PV Facility
- Umsinde Emoyeni Wind Energy Facility
- Aurora Solar PV Facility
- Mainstream Renewable Energy Cluster
- Ishwati Emoyeni Wind Energy Facility
- Trouberg Wind Energy Facility
- Modderfontein Wind Energy Facility

Scale: 1: 250 000
 Projection: WGS_1984
 Map Ref: Great Karoo Cumulative



Sources: Esri, HERE, Garmin, InterNL, Ordnance Survey, Esri Japan, Community AN, GeoBase, IGN, Kadaster
 0 5 10 20 Km
 meters, and the GIS User



Merino Wind Energy Facility Richmond, Northern Cape Province

Preliminary Sensitivity Map

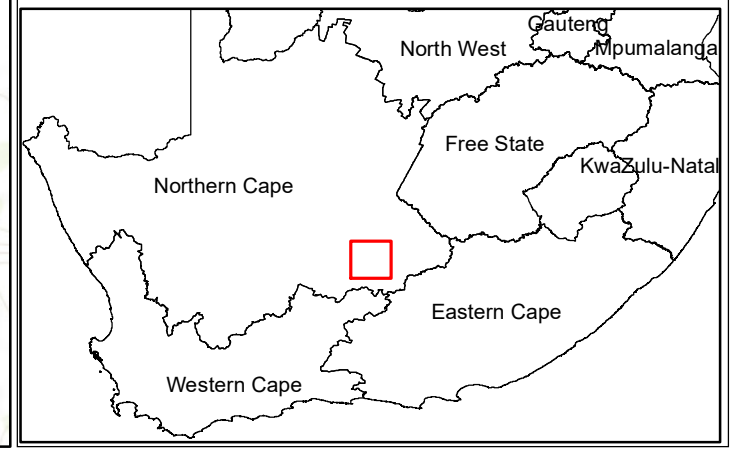
Legend

- Existing Power Line
- National Road
- Main Road
- Non-Perennial River
- Perennial River
- Project Site
- Merino Wind Energy Facility Development Area

Environmental Features & Sensitivities

- Noise Sensitive Receptors
- Verreaux Eagle - Turbine No-Go (3.7km)
- Verreaux Eagle - Medium Sensitivity Buffer (5.2km)
- Tawny Eagle - Turbine No-Go (3km)
- Martial Eagle - Turbine No-Go (5km)
- Jackal Buzzard - Turbine No-Go (750m)
- Small Dam - Avifauna Turbine No-Go (500m)
- Waterpoint - Avifauna Turbine No-Go (200m)
- Ridge - Verreaux Eagle Turbine No-Go
- Large Dam - Avifauna Turbine No-Go (800m)
- Bats - Moderate Sensitivity Buffer (150m)
- Bats - High Sensitivity Buffer (200m)
- Channel - Very High Ecological Sensitivity
- Drainage - Very High Ecological Sensitivity
- Open water - Very High Ecological Sensitivity
- Cultivation - High Ecological Sensitivity
- Drainage - High Ecological Sensitivity
- Open water - High Ecological Sensitivity
- Mountain slopes - Medium-High Ecological Sensitivity
- Karroid plains - Medium Ecological Sensitivity

Scale: 1: 37000
 Projection: WGS_1984
 Map Ref: MerinoWEF - Prelim Sens



Sources: Esri, HERE, Garmin, Inter
 NL, Ordnance Survey, Esri Japan, I
 Community

0 0,75 1,5 3 Km

1559 m
 IGN, Kadaster
 GIS User