

# Crossroads Green Energy Middelplaas Solar PV Facility Northern Cape Province

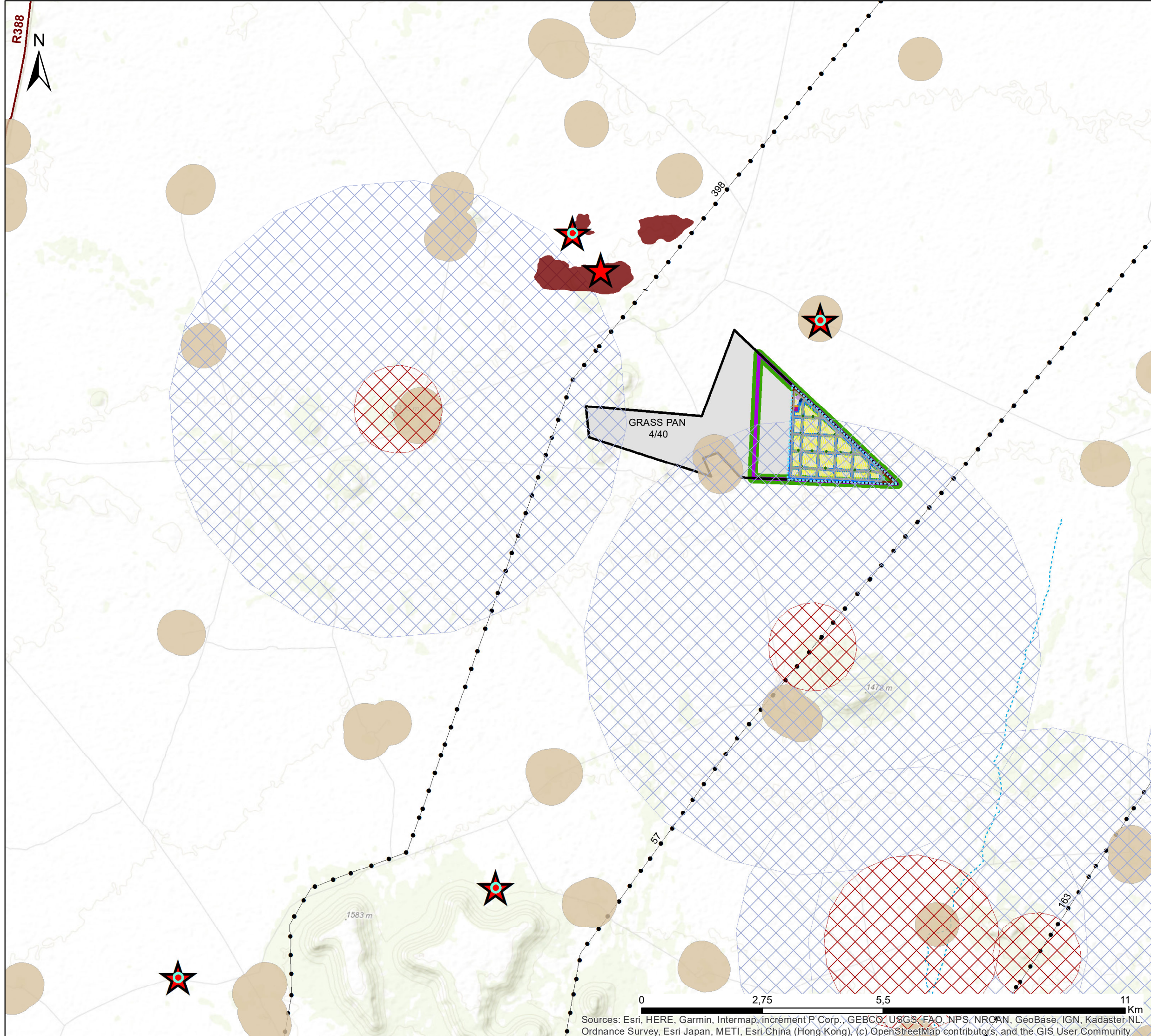
## Layout & Sensitivity Map

### Legend

- Transmission Lines
  - Regional Road
  - Non-perennial River
  - Perennial River
- ### Facility Layout
- Internal Roads
  - Power Stations
  - Development Footprint
  - Development Area
  - Project Site
  - Fire Break (50m)
  - Facility Fenceline
  - On-Site Substation
  - BESS
  - Office and Storage
  - Laydwn Area
  - Parking Area
  - Solar PV Arrays
  - Affected Property
- ### Heritage Sensitivities
- Heritage 100m Buffer
  - Heritage Resources - Moderate Sensitivity
  - No-go Areas
- ### Avifauna Sensitivities
- Nest buffers 2km - No Go areas
  - Nest buffers - Low Sensitivity
- ### Visual Sensitivities
- Residences - Moderate Sensitivity
- ### Terrestrial Ecology Sensitivities
- Karoo Grassland - Medium Sensitivity

Scale: 80 000  
Projection: WGS\_GCS\_1984  
Map Ref: Crossroad Green Energy Cluster Middelplaas

savannah  
environmental



Sources: Esri, HERE, Garmin, Intermap, increment P Corp., GEBCO, USGS, FAO, NPS, NRCAN, GeoBase, IGN, Kadaster NL, Ordnance Survey, Esri Japan, METI, Esri China (Hong Kong), (c) OpenStreetMap contributors, and the GIS User Community