

# ENGINEERING SURVEY DESIGN DRAWING

Reference Effective Date	Revision

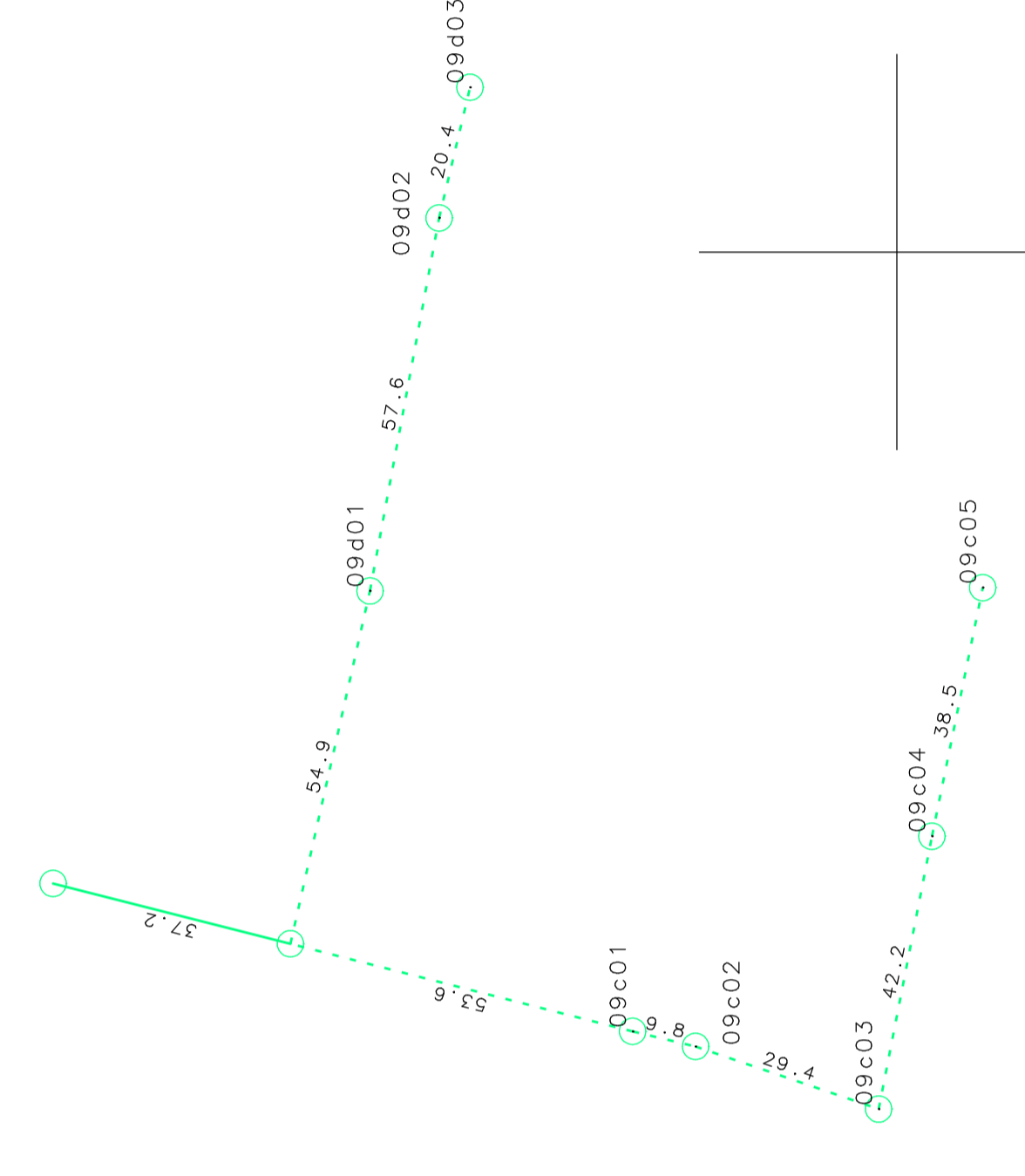
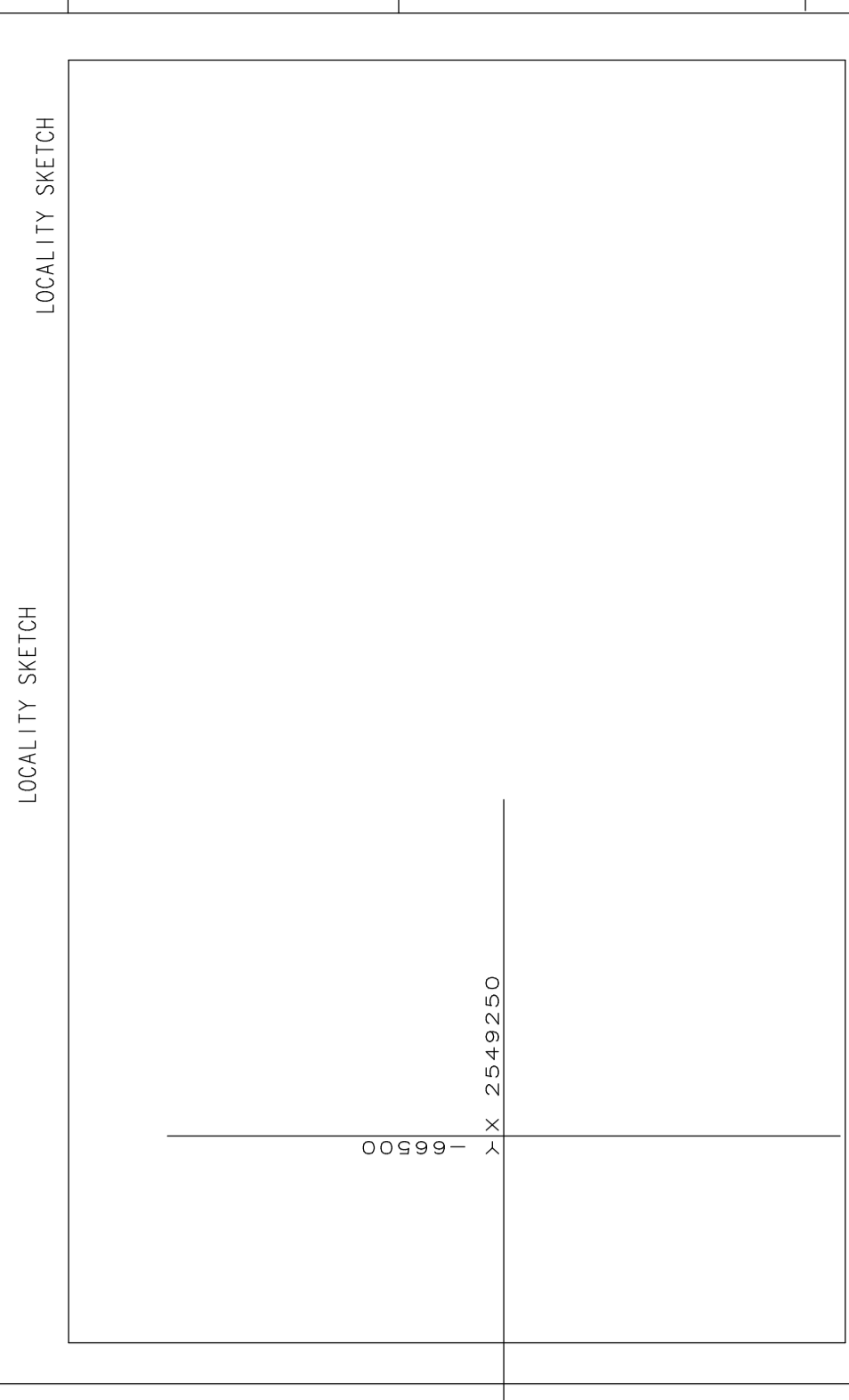
DATA	COORDINATES SYSTEM: WGS 31	HEIGHTS
SIDES (#)	ANGLE OF DIRECTION	
	CONSTRAINTS	

AREA: THOHOYANDOU  
 SURVEYED BY: TREK GEOMATICS SOLUTIONS (PTY) LTD  
 DATE: 06/01/2023



- Existing MV powerline
- New MV powerline
- Existing LV powerline
- New LV powerline
- MV to be dismantled
- LV to be dismantled
- Transformer
- MV Stay Wire
- MV Strut Pole
- LV Stay Wire
- LV Strut Pole
- MV Pole
- 9m Connecting pole
- LV Pole



SCALE: PLAN NO: 01

MV Cable Length : 3.7  
 LV Cable Length : 7.3

NO	REV	DATE	BY	CHKD	REFERENCE DRAWING

REGISTER

NO	REV	DATE	BY	CHKD	APP'D

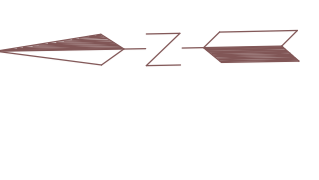
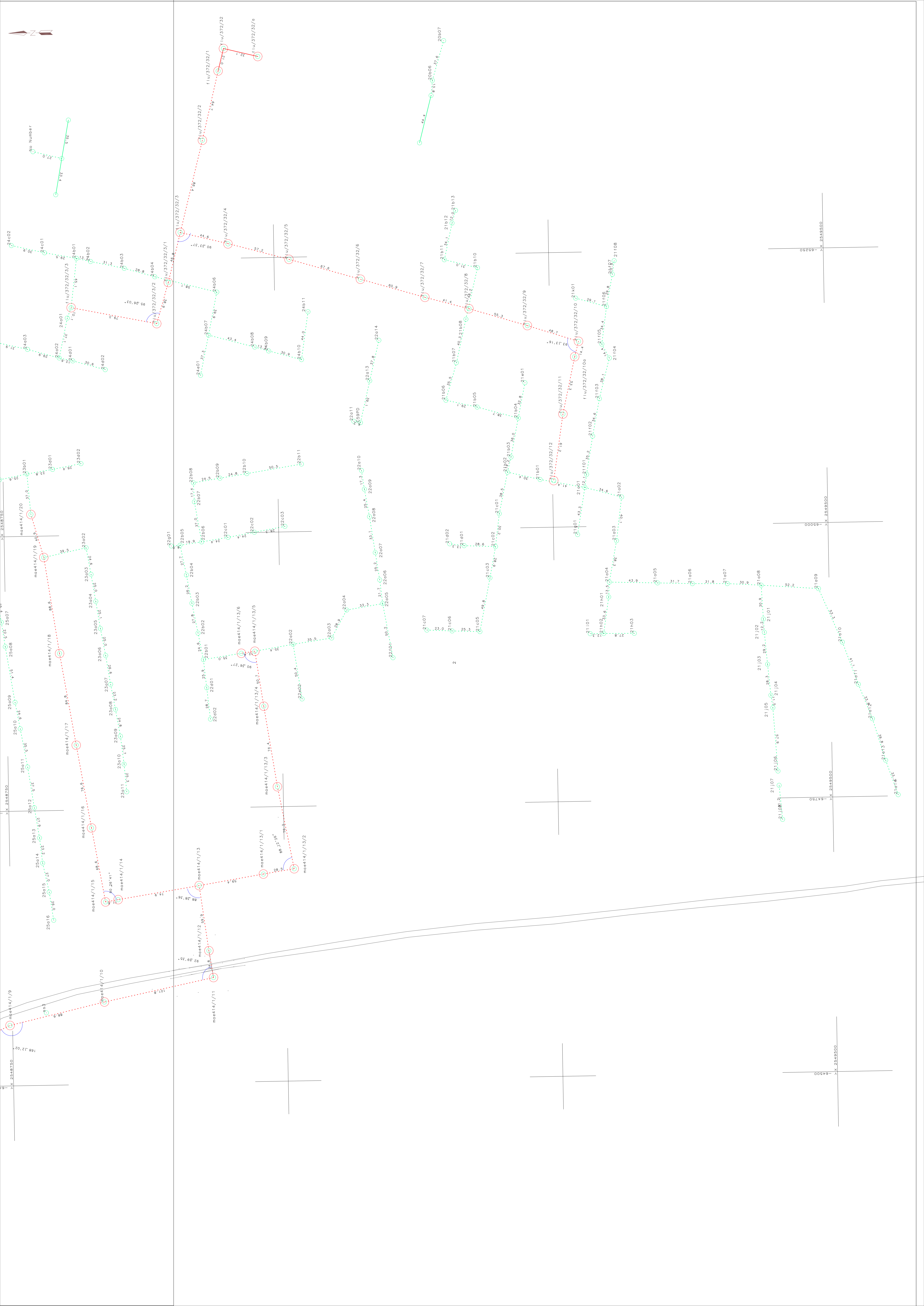
Scale: 1:1000

Drawn: T. KURUMI  
 Checked: T. KURUMI

ESKOM MIDDORONI PEGGING

REV: 0

22 DEC 2022 A01



Scale Number  
5.5K

2

X: 2548750  
Y: 64500

X: 2549500  
Y: 64500

X: 2549500  
Y: 64750

X: 2549500  
Y: 65000

X: 2549500  
Y: 66250

