

# BACKGROUND INFORMATION DOCUMENT

Prospecting Right application and Environmental Authorization application for Kamoma 2020 Investments (Pty) Ltd on the Farm Moabsvelden 248 IR, situated under the Magisterial District of Delmas, Mpumalanga Province.



Singo Consulting (Pty) Ltd

## KAMOMA 2020 INVESTMENTS (PTY) LTD

### INTRODUCTION

Singo Consulting (Pty) Ltd has been appointed as an independent Environmental Consultant by **Kamoma 2020 Investments (Pty) Ltd** to conduct Environmental Impact Assessment (EIA), Compile an Environmental Management Programme report (EMPr) and undertake Public Participation Process (PPP). Kamoma 2020 Investments (Pty) Ltd applied for a Prospecting Right (**DMR Ref: MP 30/5/1/1/2/15652PR**) and the Environmental Authorization in terms of Section 16 of the Mineral and Petroleum Resources Development Act, (Act No. 28 of 2002) (MPRDA) on **Portions 11,17,26,31,37 & 39 (42)** of the Farm **Moabsvelden 248 IR**, situated under the Magisterial District of Delmas, Mpumalanga Province.

Notice is given in terms of the Mineral and Petroleum Development Act (MPRDA) (Act 28 of 2002) and EIA regulations 2014, published under Government Notice No. 982 in Gazette No. 3822 of 4 December 2014, amended on 7 April 2017, that **Kamoma 2020 Investments (Pty) Ltd** has applied for a Prospecting Right.

### PURPOSE OF THE DOCUMENT

The purpose of this Background Information Document (BID) is to provide a brief description of the proposed project, present the Prospecting Right application according to South African Legislation, provide more details about the Public Participation Process (PPP) which will be followed and to obtain comments and concerns raised by the Interested and Affected Parties (I&APs) on the issues related to the project.

### PROJECT DESCRIPTION

Prospecting Right application has been submitted for the purpose of prospecting for **Coal** on Portions **11,17,26,31,37 & 39(42)** of the farm **Moabsvelden 248 IR**. The proposed prospecting area is located approximately at 39 km south west of Ogies, 27 km north east of Springs and approximately 65 km south west of Emalahleni respectively.

### REGULATORY FRAMEWORK

The following relevant legislation will be followed for this project: Mineral and Petroleum Resources Development Act, 2002, (Act 28 of 2002) (MPRDA), National Environmental Management Act, 1998 (Act 38 of 1998), EIA regulation, as amended (April 2017), National Water Act, 1998 (Act 36 of 1998), National Air Quality Standards (GN 1210:2009) and National Dust Control regulations (GN 275:2017). In terms of the MPRDA, it is required to consult with Interested and Affected Parties (I&APs). Comments received from I&APs will be recorded and included in the EMPs for the projects which will submitted to the Department of Mineral Resources (DMR). The EMPs will be compiled and implemented to ensure that potential impacts of the proposed prospecting activities are mitigated and managed. According to the MPRDA, the EMP need to include the following activities but is not limited to:

- describing the environment that is likely to be affected by the proposed prospecting; and identifying potential impacts.
- Assessing the significance of the potential impacts of the proposed project on the environment, socio economic conditions and cultural heritage; and evaluating the proposed mitigation measures to minimize negative impacts.

## INVITATION TO COMMENT

As part of the EIA process, more especially the Public Participation Process (PPP) for this proposed project, I&APs are invited to register and kindly submit any comments or concerns to reach Ms Sinazo Bhengu until **Wednesday, the 23<sup>rd</sup> of June 2021** using the contact details provided below. The public is also invited to review and comment on the Draft Basic Assessment Report (DBAR) & EMP which will be available for review for 30 days calendar period, from **24<sup>th</sup> of June 2021 to the 23<sup>rd</sup> of July 2021**. This report will be available upon request, via Email from the respective EAP.

For comments or concerns about this document, please contact:



Ms Sinazo Bhengu  
 Tel: 013 692 0041  
 Cell: 065 817 4850

Email: [sinazo@singocinsulting.co.za](mailto:sinazo@singocinsulting.co.za)

Office No.16, First Floor, Corridor Hill Crossing  
 09 Langa Crescent, Corridor Hill, eMalahleni

## PUBLIC PARTICIPATION PROCESS

Public Participation Process (PPP) is the cornerstone of any EIA process that facilitates openness and transparency. It provides a platform for I&APs to obtain sufficient information about the proposed development and affords them an opportunity to make valuable contributions towards the EIA process and associated specialists studies in terms of their issues and concerns.

## ENVIRONMENTAL IMPACT ASSESSMENT PROCESS

**Who is doing the EIA?**

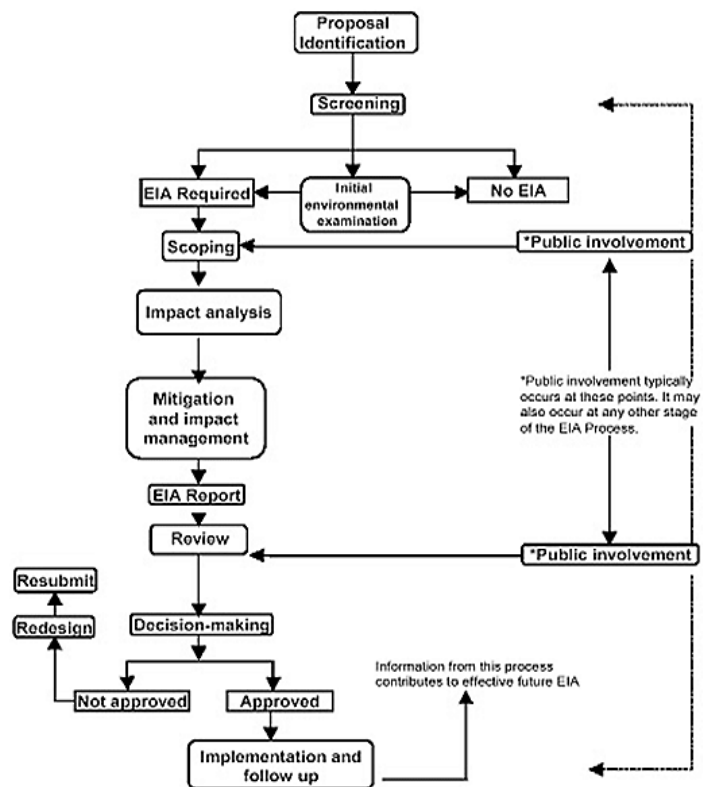
In terms of the EIA regulations, an independent Environmental Assessment Practitioner (EAP) must be appointed to conduct the EIA. Therefore, Singo Consulting (Pty) Ltd has been appointed as an independent Environmental Assessment Practitioner (EAP), to compile an Environmental Management Plan (EMP) and to undertake the Public Participation Process (PPP) for the respective Prospecting Right application.

### WHAT IS AN ENVIRONMENTAL IMPACT ASSESSMENT?

An environmental Impact Assessment (EIA) is a process of evaluating the likely environmental impacts of a proposed project or development, taking into account inter-related socio-economic, cultural and human-health impacts, both beneficial and adverse.

The purpose of the EIA is to demonstrate to the authorities what the potential consequences of their choices will be in environmental, economic and social terms. Public concerns and issues must therefore be identified timeously so that these can be evaluated and incorporated into the final design if necessary. The EIA consists of two phases. The first phase is the **Scoping Study**, which identifies potential issues that need more detailed investigation. The second phase is the EIA phase, where detailed investigations of the issues identified during scoping are undertaken.

### EIA Process



**Figure 1: The EIA process & stages of PPP**

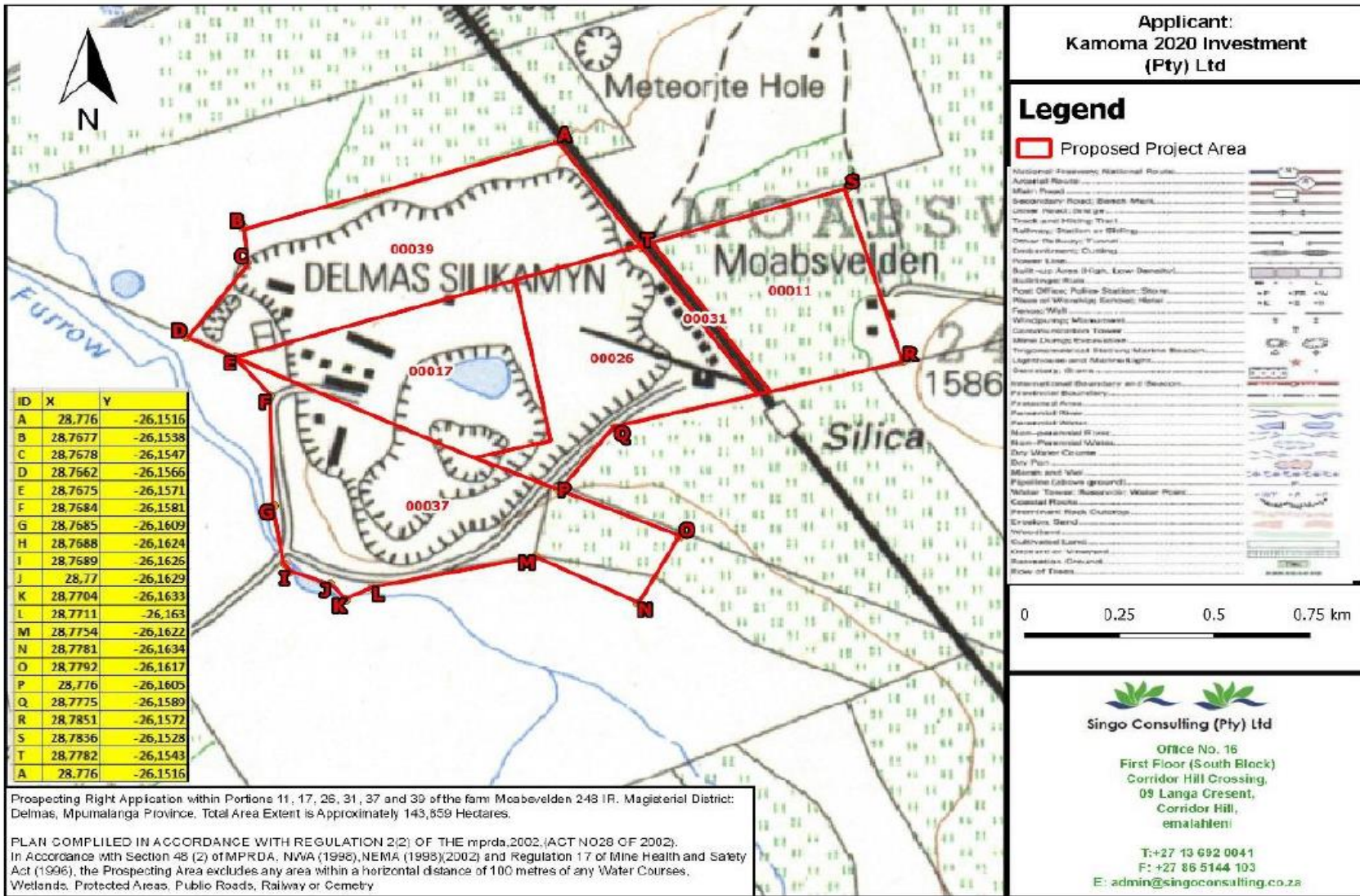


Figure 2: Location of the proposed project.



Office No.16, First Floor  
Corridor Hill Crossing  
09 Langa Crescent, Corridor Hill  
eMalahleni  
1035  
T: +27 13 692 0041  
C: +27 65 817 4850  
E: [sinazo@singoconsulting.co.za](mailto:sinazo@singoconsulting.co.za)

**REGISTRATION AND COMMENT SHEET (DMR Ref: MP 30/5/1/1/2/15652PR)**

**PROSPECTING RIGHT APPLICATION ON THE FARM MOABVELDEN 248 IR, SITUATED IN THE  
MAGISTERIAL DISTRICT OF DELMAS, MPUMALANGA PROVINCE.**

I would like to register as an I&AP and/or bring to the attention of Singo Consulting (Pty) Ltd the following comments. (Please use additional paper if required)

**Attention:** Sinazo Bhengu

**Email:** [sinazo@singoconsulting.co.za](mailto:sinazo@singoconsulting.co.za)

(Please fill out the sheet below, for your contact details to be captured on our database)

<b>Title:</b>	<b>Name:</b>	<b>Surname:</b>
<b>Company/ Organisation:</b>		
<b>Designation:</b>		
<b>Address:</b>		
<b>Tel No:</b>	<b>Cell No:</b>	<b>Email:</b>
<b>Nature of Interest on the project:</b>		

**PLEASE PROVIDE YOUR COMMENTS OR QUESTIONS HERE**

---

---

---

---

---

---

---

---