

Moeding Solar PV Facility and associated infrastructure, North West Province

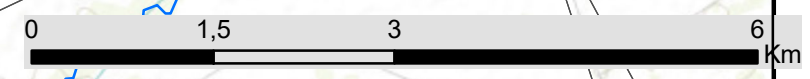
Locality Map

Legend

- Town
- Eskom Substation
- Railway
- National Route
- Regional Road
- Main Road
- Non-perennial River
- Perennial River
- Project Site
- Affected Property
- Farm Portion

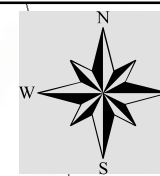


Scale: 1:62 500
 Projection: LO25
 Map Ref: Moeding Regional Map 18.12.2018



Moeding Solar PV Facility, North West Province

Environmental Sensitivity Map -
Development Area

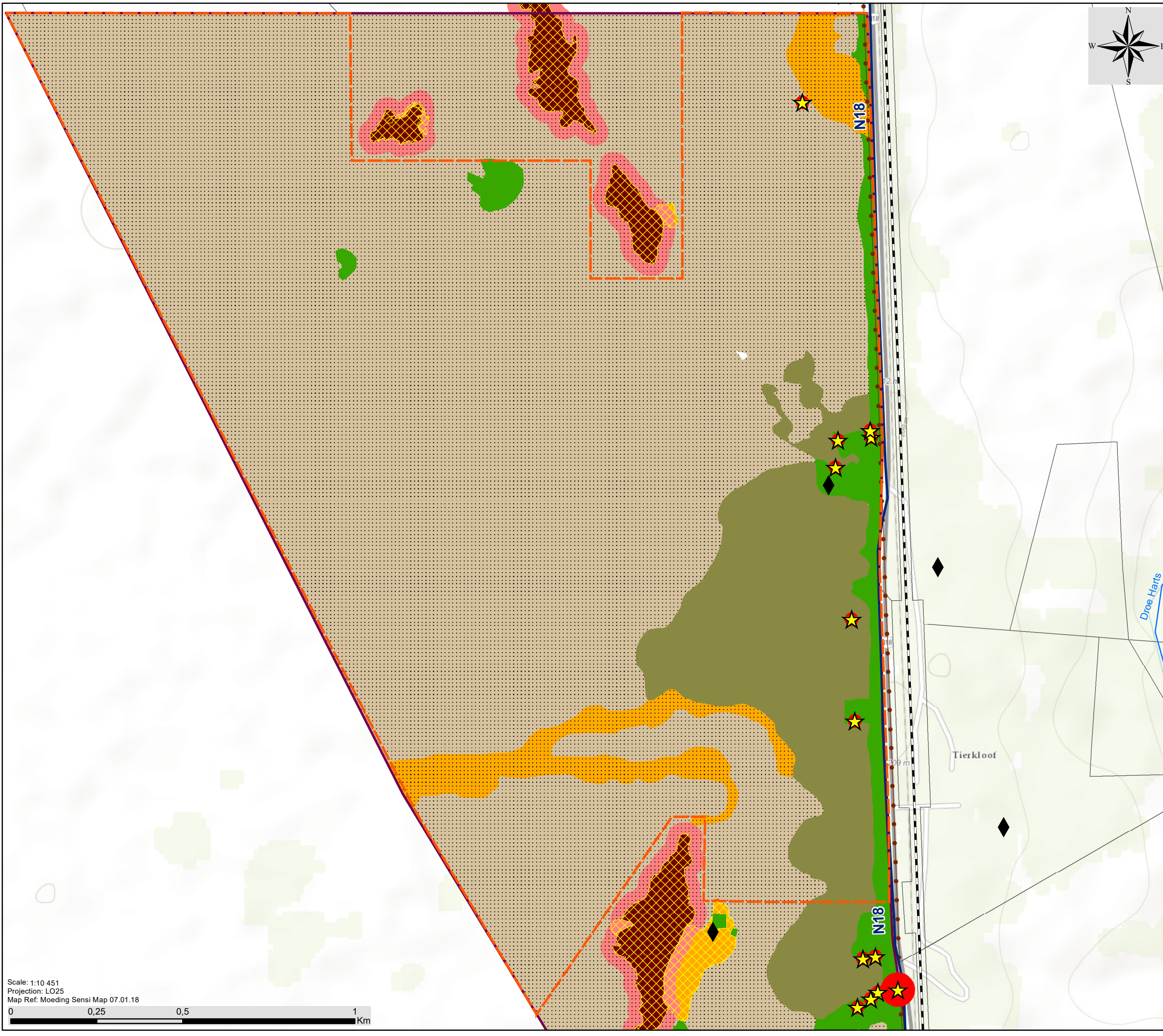
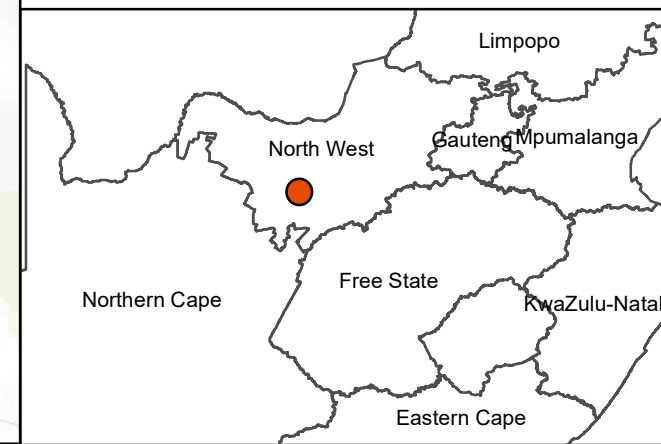


Legend

- Mookodi - Magopele 132kV (to be constructed)
- Railway
- National Route
- Non-perennial River
- Perennial River
- Development Area (436,6ha)
- Project Site (642ha)
- Farm Portion

Environmental Sensitivities:

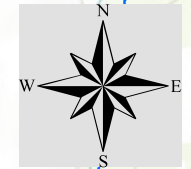
- Visual Receptor
- Heritage Sites
- High Heritage Sensitivity (No-go Area)
- Very High Ecological Sensitivity (No-go Area)
- High Ecological Sensitivity
- High Avifauna Sensitivity
- Medium Ecological Sensitivity
- Medium Avifauna Sensitivity
- Medium-Low Avifauna Sensitivity
- Medium-Low Ecological Sensitivity
- Low Ecological and Avifauna Sensitivity



Scale: 1:10 451
 Projection: LO25
 Map Ref: Moeding Sensi Map 07.01.18

Moeding Solar PV Facility, North West Province

Environmental Sensitivity Map -
300m Power Line Corridor



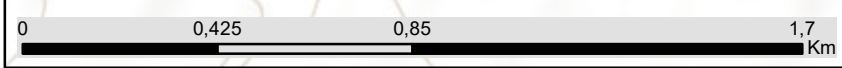
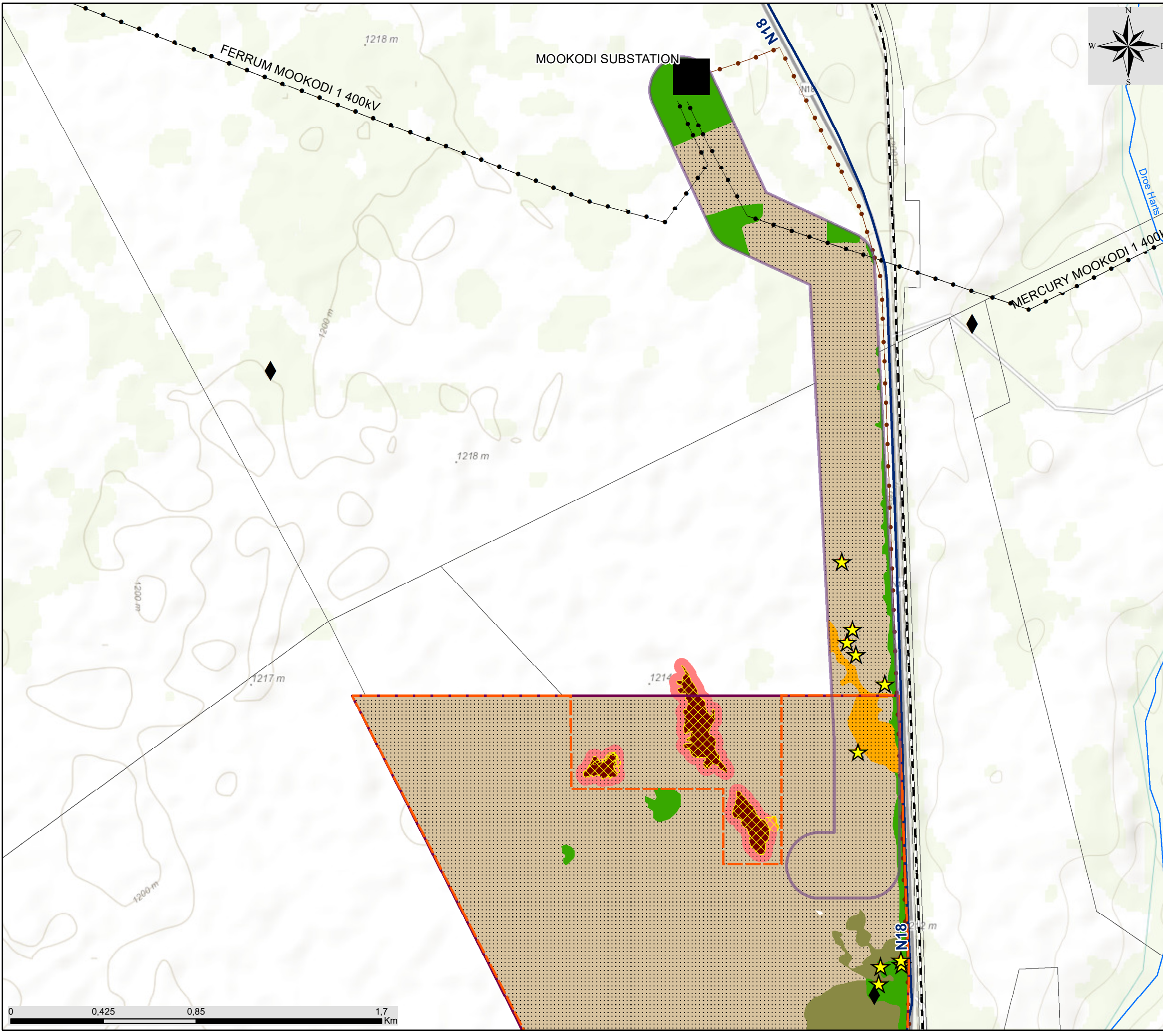
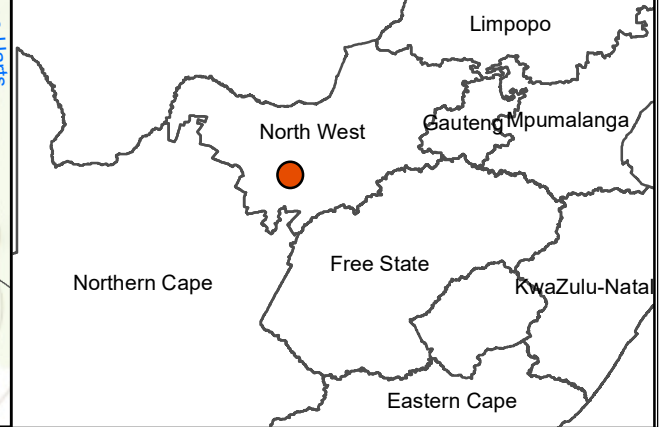
Legend

- Eskom Substation
- Mookodi - Magopele 132kV (to be constructed)
- Railway
- National Route
- Non-perennial River
- Perennial River
- 300m Corridor for Power Line Alternative 1
- Development Area (436,6ha)
- Project Site (642ha)
- Farm Portion

Environmental Sensitivities:

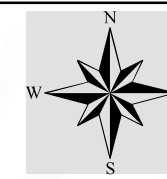
- Visual Receptor
- Heritage Sites
- High Heritage Sensitivity (No-go Area)
- Very High Ecological Sensitivity (No-go Area)
- High Ecological Sensitivity
- High Avifauna Sensitivity
- Medium Ecological Sensitivity
- Medium Avifauna Sensitivity
- Medium-Low Ecological Sensitivity
- Medium-Low Avifauna Sensitivity
- Low Ecological and Avifauna Sensitivity

savannah environmental
Scale: 1:16 477
Projection: LO25
Map Ref: Moeding Corridor Sensi Map 07.01.18
















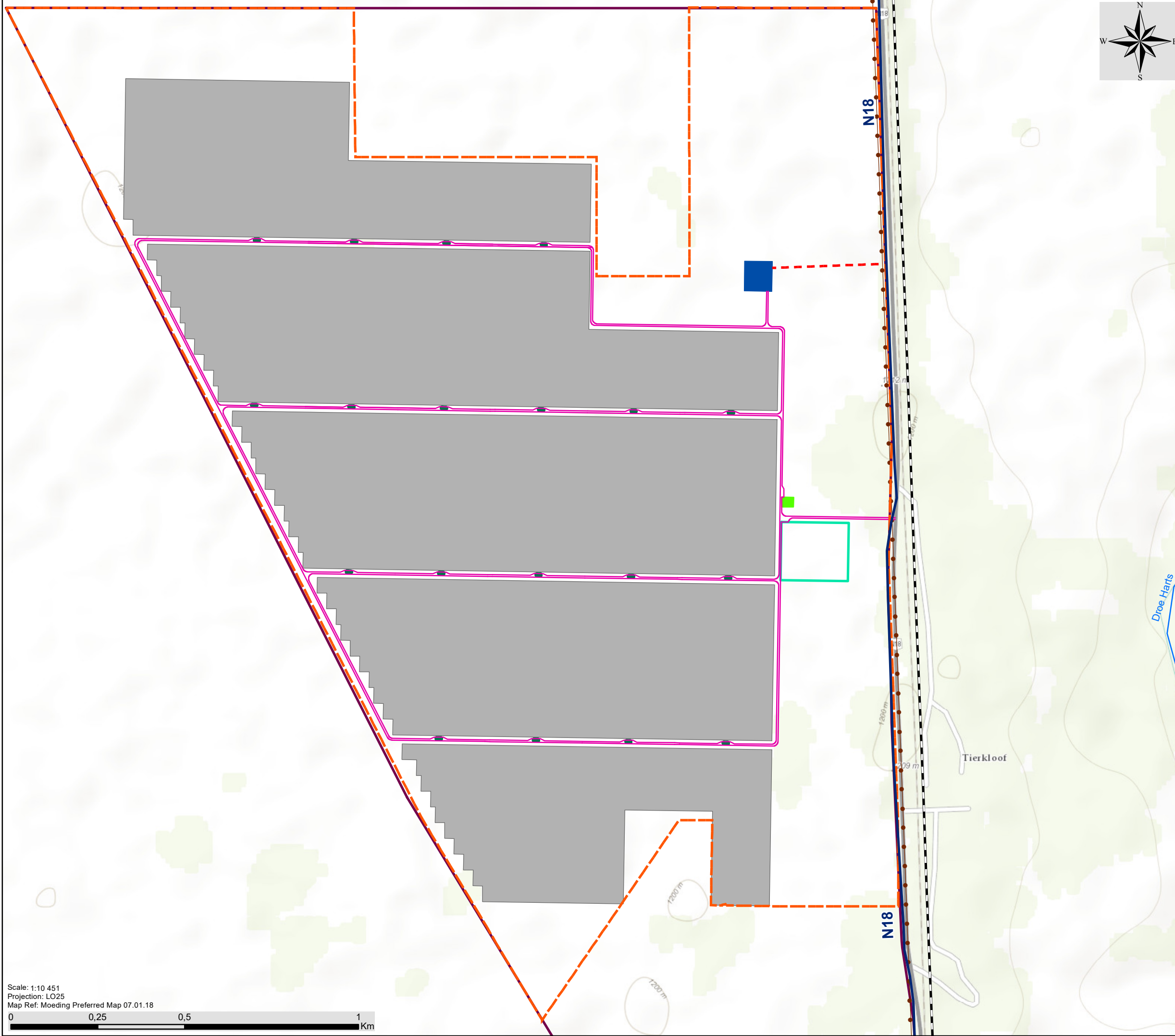
Moeding Solar PV Facility, North West Province

Preferred Layout Map

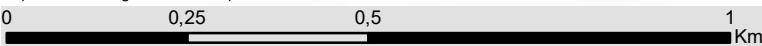


Legend

-  National Route
 -  Mookodi - Magopele 132kV (to be constructed)
 -  Railway
 -  Perennial River
 -  Development Area (436,6ha)
 -  Project Site (642ha)
- Layout:**
-  Internal Access Road
 -  Power Line Alternative 2 (preferred)
 -  On-site_Substation
 -  Inverters
 -  O&M Building
 -  Permanent Compound Area
 -  Solar Field

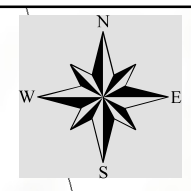


Scale: 1:10 451
 Projection: LO25
 Map Ref: Moeding Preferred Map 07.01.18



Moeding Solar PV Facility, North West Province

Preferred Layout and Environmental Sensitivity Map



Legend

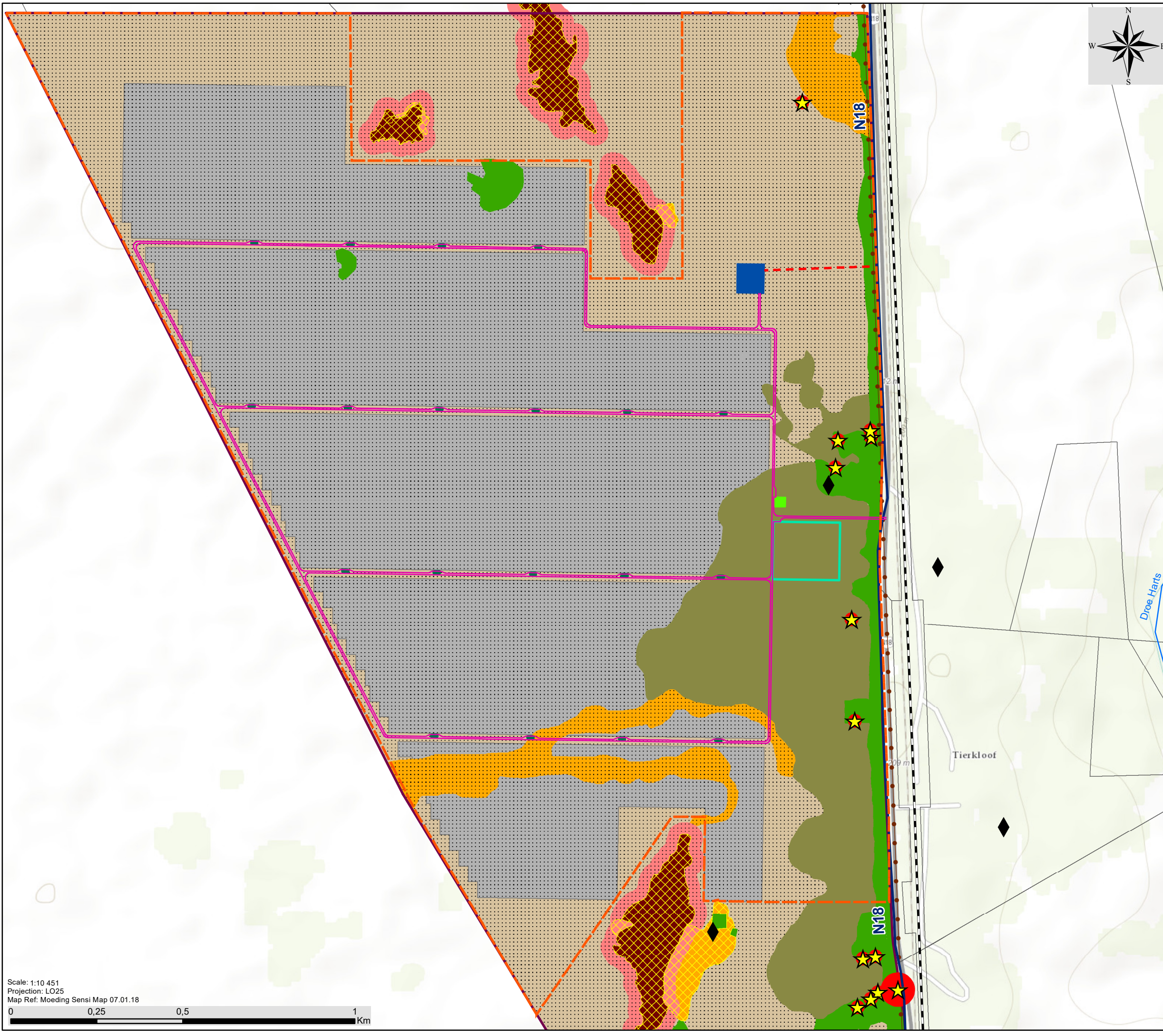
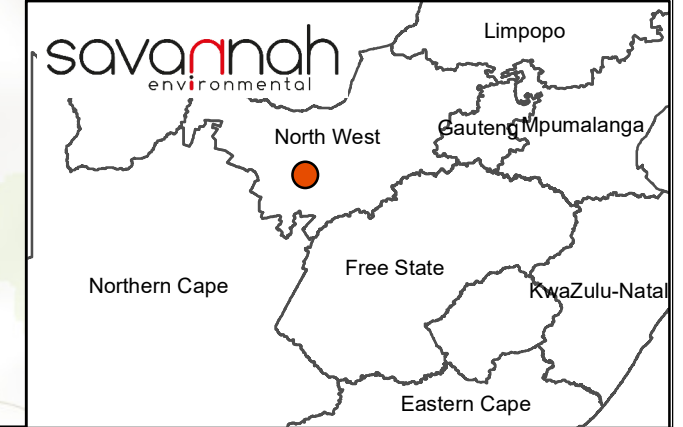
- Mookodi - Magopele 132kV (to be constructed)
- Railway
- National Route
- Perennial River
- Development Area (436,6ha)
- Project Site (642ha)
- Farm Portion

Layout:

- Internal Access Road
- Power Line Alternative 2 (preferred)
- On-site_Substation
- Inverters
- O&M Building
- Permanent Compound Area
- Solar Field

Environmental Sensitivities:

- Visual Receptor
- Heritage Sites
- High Heritage Sensitivity (No-go Area)
- Very High Ecological Sensitivity (No-go Area)
- High Ecological Sensitivity
- High Avifauna Sensitivity
- Medium Ecological Sensitivity
- Medium Avifauna Sensitivity
- Medium-Low Ecological Sensitivity
- Medium-Low Avifauna Sensitivity
- Low Ecological and Avifauna Sensitivity



Scale: 1:10 451
 Projection: LO25
 Map Ref: Moeding Sensi Map 07.01.18

Moeding Solar PV Facility and associated infrastructure, North West Province

(in relation to other solar energy facilities)



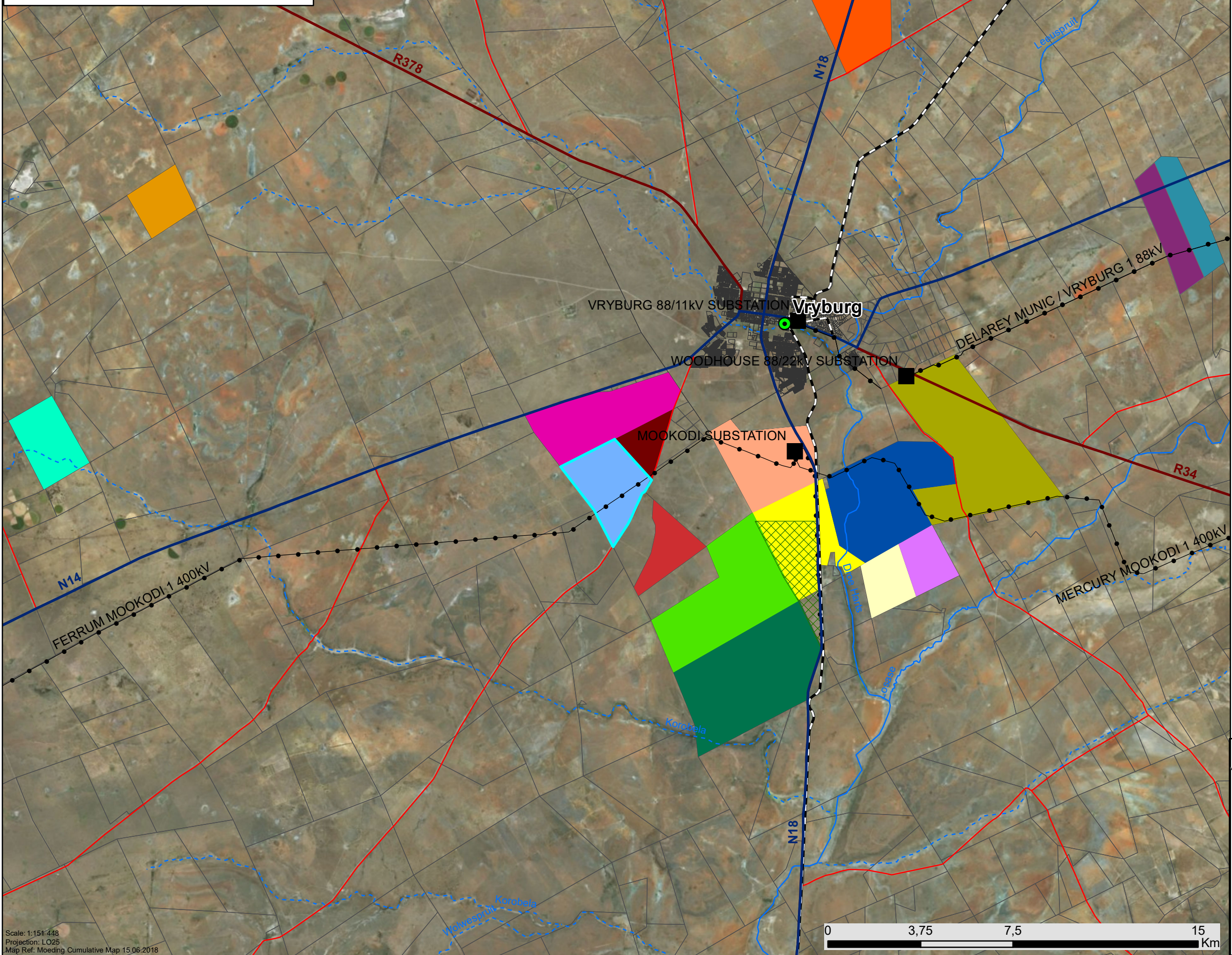
Legend

- Town
- Eskom Substation
- Existing Power Line
- Railway
- National Route
- Regional Road
- Main Road
- Non-perennial River
- Perennial River
- Project Site
- Farm Portion

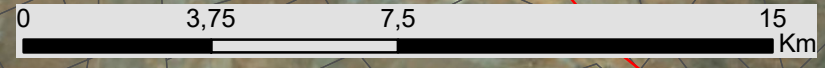
Other Solar Energy Facilities (SEF):

(illustrations based on affected properties and not project site)

- Subsolar Sonbesie (1 x PV)
- Subsolar Rosendal (1 x PV)
- Subsolar Protea (1x PV)
- Subsolar Waterloo (1 x PV)(PB4)
- Subsolar Khubu (1 x PV)
- Subsolar Gamma (1x PV)
- Biotherm Sedawo (3 x PV)
- Kabi Solar Tiger Kloof (1 x PV)
- Genesis Eco-Energy Woodhouse (2 x PV)
- ABO Wind Vryburg Solar 1 (1 x PV)
- ABO Wind Vryburg Solar 2 & 3 (2 x PV)
- AMDA Klondike (3 x PV)
- Alpha Solar Power Plant (1 x PV)
- Meerkat Solar Power Plant (1 x PV)
- Carocraft Solar Park (1 x PV)
- 60MW Carocraft PV Solar Park (1 x PV)
- Renewable Energy Generation Project (1 x PV)

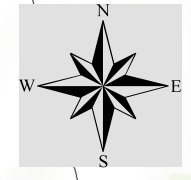


Scale: 1:151 448
 Projection: LO25
 Map Ref: Moeding Cumulative Map 15.06.2018



Moeding Solar PV Facility, North West Province

Preferred Layout and Environmental Sensitivity Map (Updated)



Legend

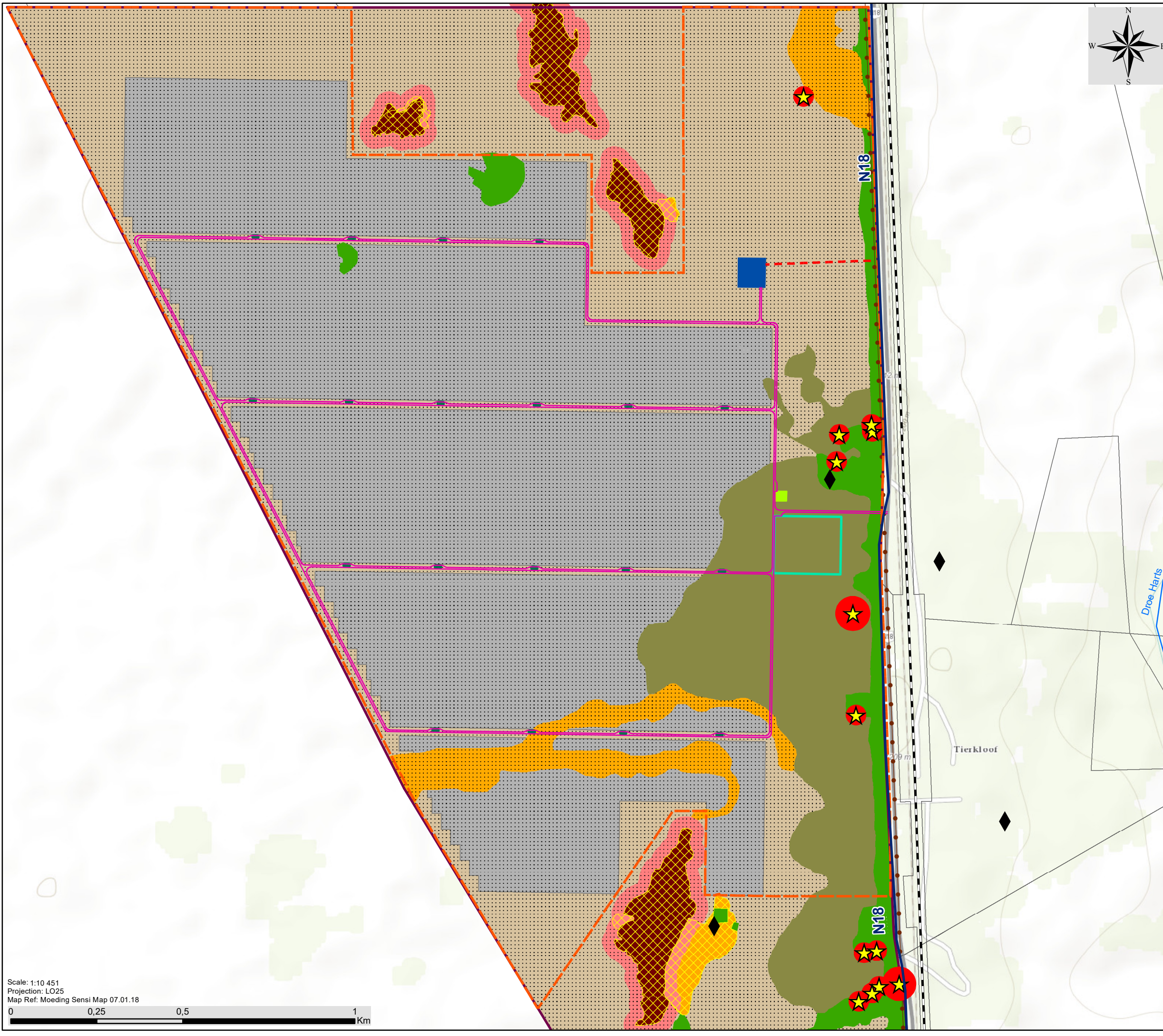
- Mookodi - Magopele 132kV (to be constructed)
- Railway
- National Route
- Perennial River
- Development Area (436,6ha)
- Project Site (642ha)
- Farm Portion

Layout:

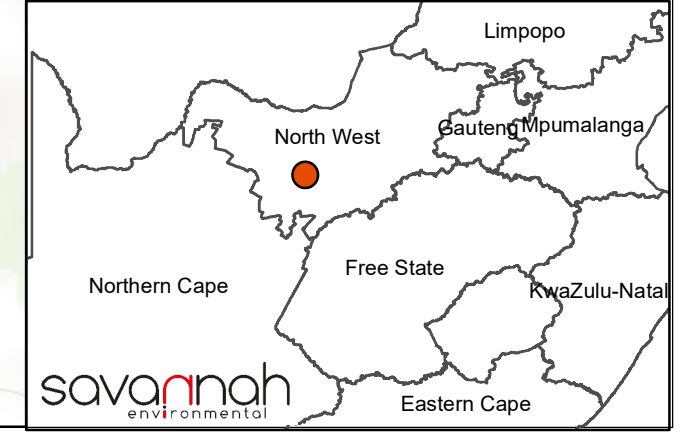
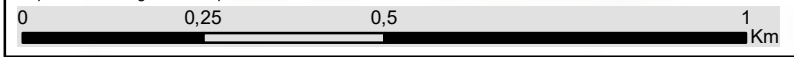
- Internal Access Road
- Power Line Alternative 2 (preferred)
- On-site Substation
- Inverters
- O&M Building
- Permanent Compound Area
- Solar Field

Environmental Sensitivities:

- Visual Receptor
- Heritage Sites
- High Heritage Sensitivity (No-go Area)
- Very High Ecological Sensitivity (No-go Area)
- High Ecological Sensitivity
- High Avifauna Sensitivity
- Medium Ecological Sensitivity
- Medium Avifauna Sensitivity
- Medium-Low Ecological Sensitivity
- Medium-Low Avifauna Sensitivity
- Low Ecological and Avifauna Sensitivity



Scale: 1:10 451
 Projection: LO25
 Map Ref: Moeding Sensi Map 07.01.18



Appendix O: Site Coordinates

Corner point coordinates for Affected Properties (Starting in the northern most corner moving clockwise):

Coordinates		
	Latitude (S)	Longitude (E)
1	26° 59' 50,156" S	24° 43' 7,540" E
2	27° 0' 6,203" S	24° 43' 23,033" E
3	26° 59' 58,389" S	24° 45' 2,234" E
4	27° 0' 25,859" S	24° 45' 12,862" E
5	27° 0' 32,933" S	24° 45' 13,808" E
6	27° 1' 11,632" S	24° 45' 14,111" E
7	27° 1' 7,737" S	24° 45' 23,053" E
8	27° 2' 36,085" S	24° 45' 47,340" E
9	27° 2' 59,234" S	24° 46' 25,258" E
10	27° 3' 14,188" S	24° 45' 55,910" E
11	27° 3' 3,736" S	24° 45' 50,976" E
12	27° 3' 3,123" S	24° 45' 42,042" E
13	27° 2' 44,455" S	24° 45' 40,845" E
14	27° 2' 44,697" S	24° 45' 34,519" E
15	27° 3' 2,265" S	24° 45' 29,520" E
16	27° 3' 1,644" S	24° 45' 20,439" E
17	27° 2' 59,323" S	24° 45' 20,346" E
18	27° 2' 59,423" S	24° 45' 17,046" E
19	27° 3' 18,986" S	24° 45' 17,806" E
20	27° 3' 18,955" S	24° 45' 18,885" E
21	27° 3' 25,943" S	24° 45' 19,148" E
22	27° 3' 26,011" S	24° 45' 18,080" E
23	27° 3' 30,875" S	24° 45' 18,443" E
24	27° 3' 30,781" S	24° 45' 19,531" E
25	27° 4' 54,190" S	24° 45' 23,057" E
26	27° 3' 19,076" S	24° 44' 27,963" E
27	27° 0' 6,385" S	24° 42' 36,359" E

Corner point coordinates for Project Site (Starting in the north-eastern corner moving clockwise):

Coordinates		
	Latitude (S)	Longitude (E)
1	27° 2' 3,934" S	24° 45' 14,626" E
2	27° 3' 31,769" S	24° 45' 17,177" E
3	27° 3' 38,480" S	24° 45' 18,323" E
4	27° 4' 51,518" S	24° 45' 20,540" E
5	27° 3' 49,384" S	24° 44' 47,010" E
6	27° 2' 3,762" S	24° 43' 43,814" E

Corner point coordinates for Development Area (Starting in the north-eastern corner moving clockwise):

Coordinates		
	Latitude (S)	Longitude (E)
1	27° 2' 3,934" S	24° 45' 14,626" E
2	27° 3' 27,877" S	24° 45' 16,780" E
3	27° 3' 27,740" S	24° 44' 57,217" E
4	27° 3' 19,791" S	24° 44' 57,369" E
5	27° 3' 19,784" S	24° 44' 53,882" E
6	27° 3' 38,435" S	24° 44' 39,553" E

7	27° 2' 3,762" S	24° 43' 43,814" E
8	27° 2' 3,846" S	24° 44' 20,107" E
9	27° 2' 17,757" S	24° 44' 20,241" E
10	27° 2' 17,803" S	24° 44' 45,435" E
11	27° 2' 28,944" S	24° 44' 45,410" E
12	27° 2' 28,961" S	24° 44' 55,086" E
13	27° 2' 3,860" S	24° 44' 55,122" E

Power Line Alternative 1:

Coordinates		
	Latitude (S)	Longitude (E)
Start (On-site Substation)	27° 2' 28,199" S	24° 45' 3,740" E
Middle	27° 1' 27,789" S	24° 45' 6,829" E
End	27° 0' 33,769" S	24° 44' 38,873" E

Power Line Alternative 2 coordinates:

Coordinates		
	Latitude (S)	Longitude (E)
Start (On-site Substation)	27° 2' 28,199" S	24° 45' 3,740" E
Middle	27° 2' 28,014" S	24° 45' 9,711" E
End	27° 2' 27,878" S	24° 45' 15,550" E

Main Access Road coordinates (starting at the N18):

Coordinates		
	Latitude (S)	Longitude (E)
Start	27° 2' 51,667" S	24° 45' 16,195" E
Middle	27° 2' 51,570" S	24° 45' 10,321" E
End	27° 2' 51,534" S	24° 45' 4,503" E