

# Background Information Document

Basic Assessment for the proposed Mojaletema Co-Operative (Pty) Ltd Pig Production facility on farm portion 5 Uitkyk, Nigel, Gauteng

Prepared by CSIR on behalf of Mojaletema Co-Operative (Pty) Ltd

CSIR Reference number: CSIR/IU/EMS/ER/2016/0003/A

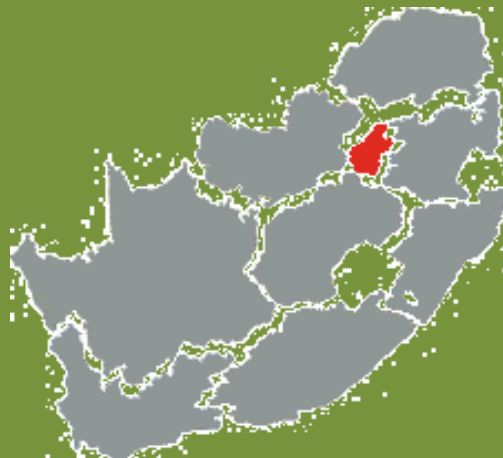
30 August 2016



Babalwa Mqokeli

[bmqokeli@csir.co.za](mailto:bmqokeli@csir.co.za)

Tel: (021) 888 2432



environmental affairs

Department:  
Environmental Affairs  
REPUBLIC OF SOUTH AFRICA

## You are invited to participate in the following process:

### INTRODUCTION TO THE PROPOSED PROJECT

Mojaletema Co-Operative (Pty) Ltd is proposing a small-scale pig production endeavour on 1.8 hectares of the farm portion 5 Uitkyk, located in the Nigel, Gauteng Province. This area falls under the Ekurhuleni Municipality, and is approximately 65 km South East of Johannesburg (Figure 1). The proposed project will include the following components:

- Build a pig house for 80 sow and 5 boars
- Build a processing and packaging room
- Already existing municipal infrastructure (roads and electricity connection).

South African pork industry is relatively large in terms of overall South African agricultural sector. It contributes around 2.15% to the primary agricultural sector. The Mojaletema Co-Operative will seek to boost local economic development in the area and provide opportunities to decrease poverty and unemployment. Mojaletem Co-Operative (Pty) Ltd is being provided *pro-bono* environmental services by the DEA/CSIR's Special Needs and Skills Development Programme, which aims to assist small-medium micro-enterprises with the application for Environmental Authorisation in order to enhance local economic development.

### SUMMARY OF THE BASIC ASSESSMENT PROCESS

In terms of the National Environmental Management Act (NEMA) EIA Regulations published in GNR 983, 984 and 985 of 4 December 2014 Government Gazette Number 38282, and NEM:WA Regulations published in GNR 921 on the 29 November 2013 Government Gazette No 37083, a **Basic Assessment** (BA) process and a **Waste Management License** is required as the project applies to the following listed activities (detailed in Table 1 below).

**Table 1: Listed activities relating to the proposed project**

Relevant notice:	Activity No (s) (in terms of the relevant notice) :	Description of each listed activity as per the Government Notice:
GN. R 983, 4 December 2014	4	The development and related operation of facilities or infrastructure for the concentration of animals for the purpose of commercial production in densities that exceed- (i) 20 square metres per large stock unit and more than 500 units per facility; (ii) 8 square metres per small stock unit and; a. More than 1000 units per facility excluding pigs where (b) applies; b. More than 250 pigs per facility excluding piglets that are not yet weaned.
GN. R 983, 4 December 2014	27	The clearance of an area of 1 hectare or more, but less than 20 hectares, of indigenous vegetation, except where such clearance of indigenous vegetation is required for- (i)The undertaking of a linear activity. (ii) Maintenance purposes undertaken in accordance with a maintenance management plan.

Relevant notice:	Activity No (s) (in terms of the relevant notice) :	Description of each listed activity as per the Government Notice:
GN. R 985, 4 December 2014	12.	The clearance of an area of 300 square meters or more of indigenous vegetation except where such clearance of indigenous vegetation is required for maintenance purposes undertaken in accordance with a maintenance management plan.(ii) Within the critical biodiversity areas identified in bioregional plans.
GN. R 985, 4 December 2014	14.	The development of-(iv) dams, where the dam, including infrastructure and water surface areas exceeds 10 square meters in size Sites identified as Critical Biodiversity Areas (CBAs) and Ecological Support Areas (ESAs) in the Gauteng Conservation Plan or in bioregional plans
GN. R 921, 29 November 2013	Category A - 1	The storage of general waste in lagoons.
GN. R 921, 29 November 2013	Category A - 12	The construction of a facility for a waste management activity listed in Category A of this Schedule (not in isolation to associated waste management activity).

The proposed project requires Environmental Authorization (EA) from the Department of Agriculture and Rural Development, Gauteng (GDARD). The Basic Assessment process that will be undertaken for this project is summarised in the following steps below:

**Step 1: Notify Authorities and potential Interested and affected parties (I&APs) (30 days)**

The first stage in the process entails notifying all potential I&APs of the proposed project, by sending out a Background Information Document (BID), and providing I&APs with an opportunity to register as an I&AP. I&APs are required to register their interest on the project database within 30 days hereof.

**Step 2: Basic Assessment Report (BAR) for Public Comment (30 days)**

The BA process is undertaken in order to identify and assess potential environmental impacts, both positive and negative, that may be associated with the project. Mitigation and management measures will be identified to reduce potential negative impacts and will be included in the Environmental Management Programme (EMPr) for this project. The BAR will include comments received from all I&APs on this document and findings of the specialist study.

**Step 3: BAR to be submitted to GDARD for decision-making**

The BAR will be drafted and will be submitted to GDARD for decision-making. The comments and issues raised will be included in the BAR. All I&APs will be provided with written notification on whether the project has been granted or refused EA and about the appeal process.

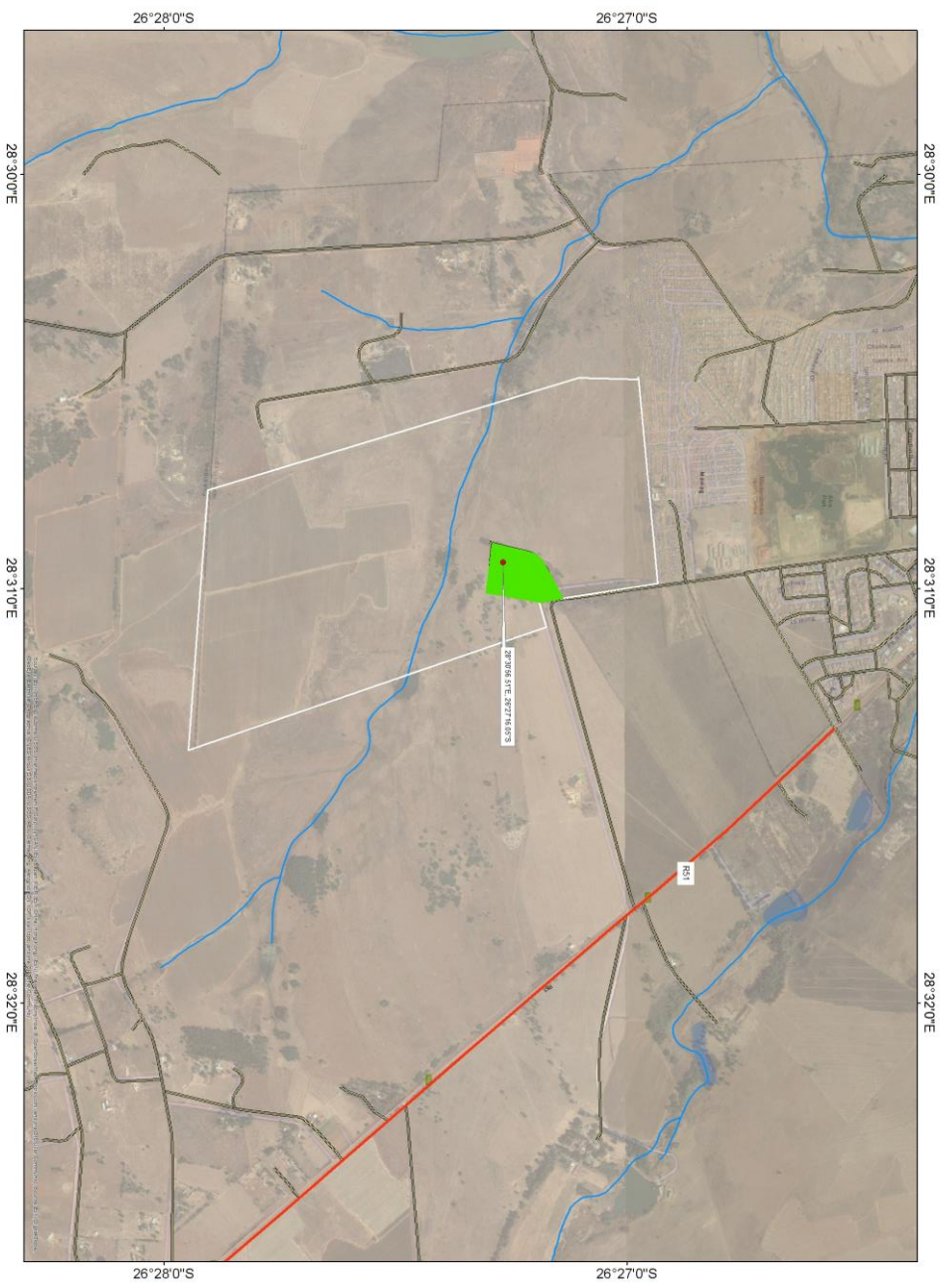
**HOW CAN YOU GET INVOLVED?**

1. By mailing, emailing or faxing a comment form to the Environmental Assessment Practitioner indicated below/telephonically contacting the Environmental Assessment Practitioner if you have a query, comment, or require further information regarding the BA process.
2. By reviewing the various reports and provide comments within the stipulated comment periods provided (i.e. the BID and BAR).

To register as an I&AP or to comment on the project, please complete the Comment/Registration Form that has been included with this BID and kindly send to **Ms. Babalwa Mqokeli** on or before 30 September 2016:

<b>Ms. Babalwa Mqokeli</b>	
✉ Email:	<a href="mailto:bmqokeli@csir.co.za">bmqokeli@csir.co.za</a>
☎ Tel:	021-888-2432
✉ Fax:	021-888-2693
📍 Address:	CSIR, PO Box 320, Stellenbosch, 7599
🌐 Website:	<a href="http://www.csir.co.za/ems/specialneeds/">http://www.csir.co.za/ems/specialneeds/</a>

# Appendix A.1: Project Layout Map



Coordinate System: GCS WGS 1984  
Datum: WGS 1984  
Units: Degree

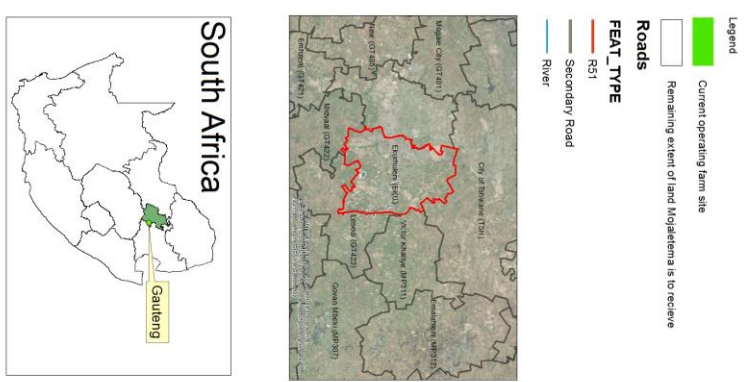


Figure 1: Location of the Proposed Mojaletema Co-Operative Pig Production facility on farm portion 5 Uitkyk, Nigel, Gauteng