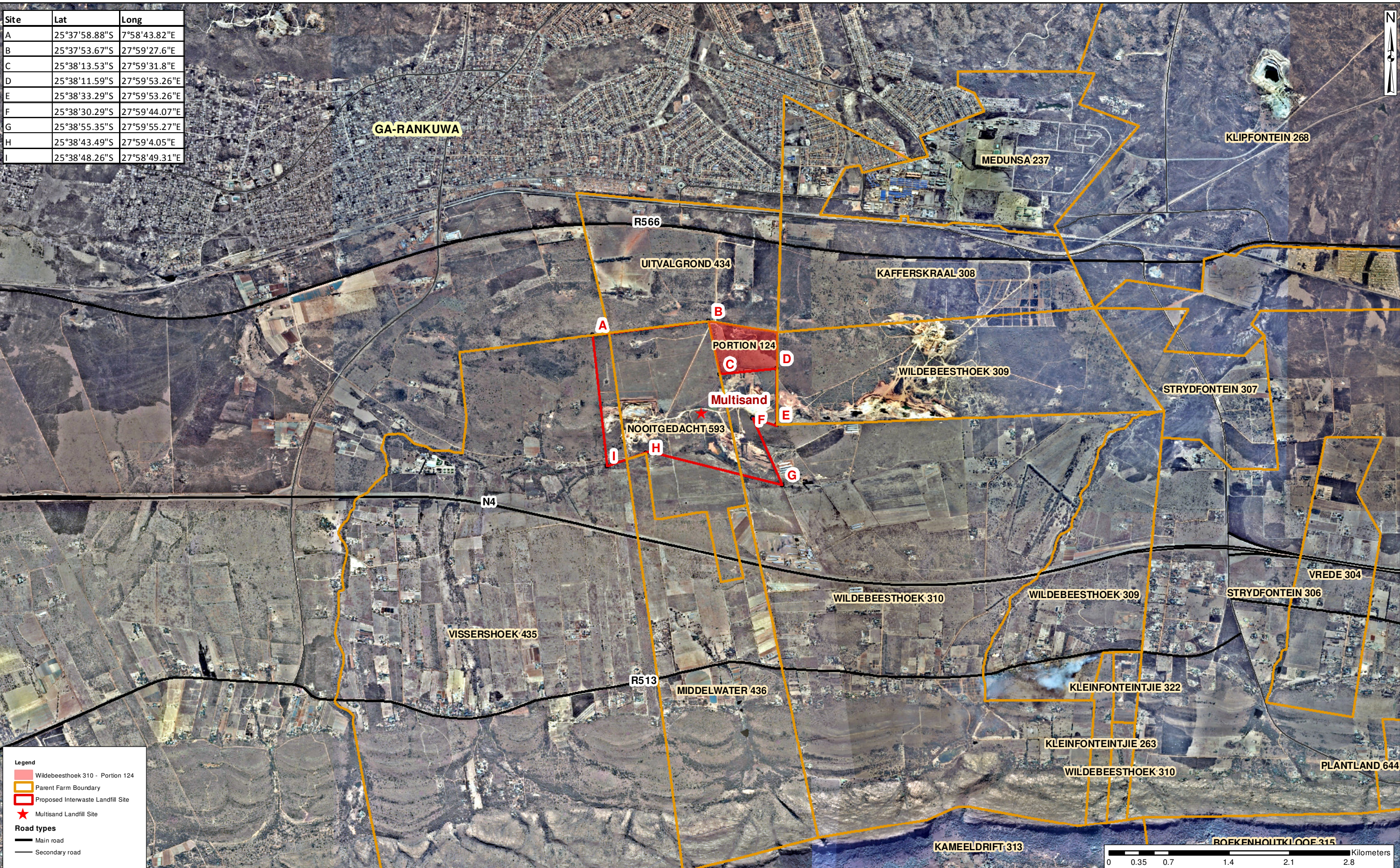


Site	Lat	Long
A	25°37'58.88"S	7°58'43.82"E
B	25°37'53.67"S	27°59'27.6"E
C	25°38'13.53"S	27°59'31.8"E
D	25°38'11.59"S	27°59'53.26"E
E	25°38'33.29"S	27°59'53.26"E
F	25°38'30.29"S	27°59'44.07"E
G	25°38'55.35"S	27°59'55.27"E
H	25°38'43.49"S	27°59'4.05"E
I	25°38'48.26"S	27°58'49.31"E



Project Title:	PROPOSED INTERWASTE MULTISAND REGIONAL WASTE FACILITY	
Map Title:	Location of the Project Area	
<small>Whilst every care has been taken in compiling the information on this map, AECOM cannot accept responsibility for any inaccuracies.</small>		
		FIGURE 1-1 Sources: 1:10 000 Orthophotos (Department of Rural Development & Land Reform)
Scale:	1:40 000	
Projection:	Geographic - Hartbeeshoek 1994	
Drawn by:	LC Gallagher	
GIS QC by:	JM Storie - PGP 0124	
Approved by:	J Hayes	
Date:	2014-05-19	
Map Ref.:	Location of the Project Area.mxd	
Revision:	00	
Project Nr.:	J13020	
<small>© Copyright</small>		
<small>Y:\7_Projects\J13020 - Multisand_Fig1.1_Location of the Project Area_A3L.mxd</small>		