

# Proposed Multisand Regional Landfill – Environmental Impact Assessment Process

Johan Hayes

Focus Group Meeting



## Content

- Welcome and Attendance Register
- Purpose of the Meeting
- EIA Process and Content of the DSR
  - Project Description and Location
  - Specialist Studies
  - Potential Impacts
- Discussion
- General
- Way forward

March 13, 2014

Page 2



## Applicant

ROLE ON TEAM	ORGANISATION
<b>Applicant</b>	Interwaste Pty Ltd
<b>Environmental Authorisation</b>	Gauteng Department of Agriculture, Conservation and Tourism (GDARD)
<b>Waste Management License</b>	National Department of Environmental Affairs (DEA)
<b>Independent Environmental Assessment Practitioner (EAP)</b>	AECOM SA (Pty) Ltd

## Project Area

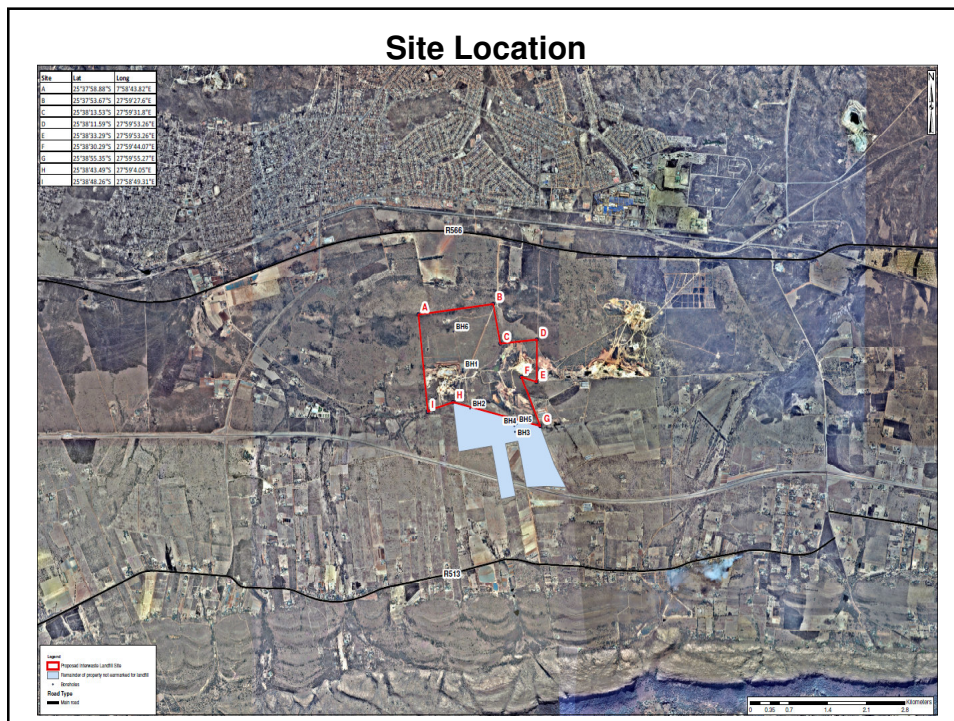
- Middelwater 593 JQ, Ptn 33 OF Vissershoeck 435 JQ, Ptn 125 of Wildebeesthoek 310 JR, De Wildt

March 13, 2014

Page 3



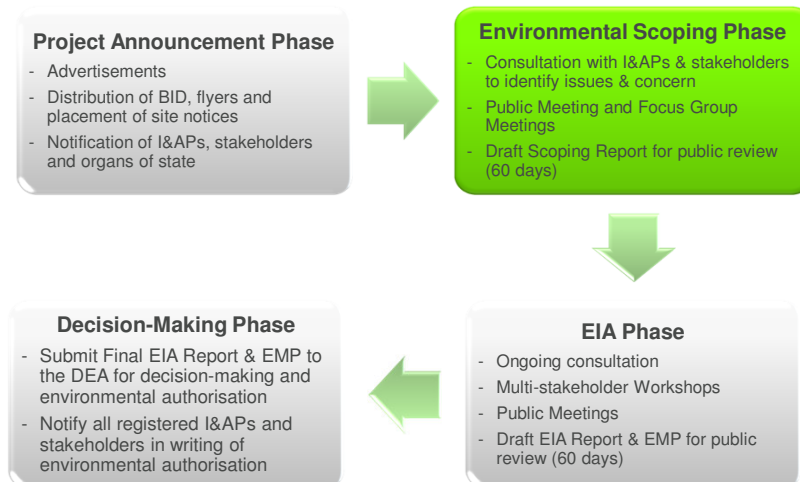
## Site Location



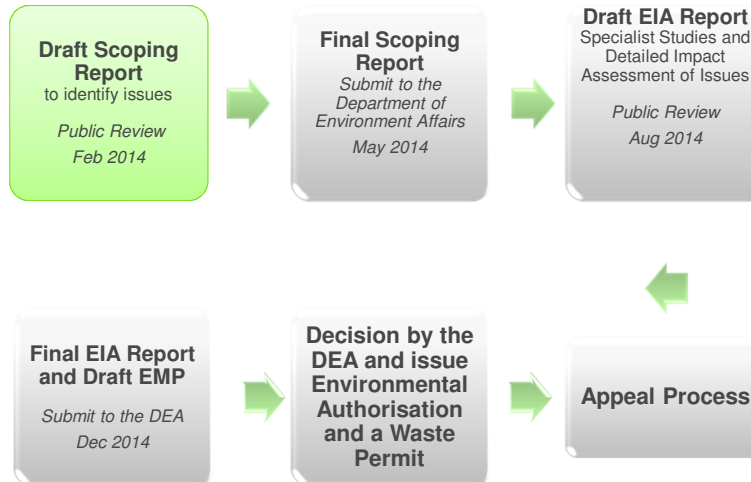
## Introduction

- New landfill facility requires authorisation by means of an EIA conducted in terms of:
  - Environmental authorisation in terms of the NEMA (Act 107 OF 1998), EIA listed activities R544, 545 and 545
  - Waste management license in terms of the NEMWA (Act 59 of 2008), Category A and B activities
- Construction of the landfill may not commence prior to approval of the above NEMA and NEMWA activities
- Do-Nothing approach considered in cases where the proposed activity will have significant negative impacts that cannot be effectively or satisfactorily mitigated

## Public Participation Process

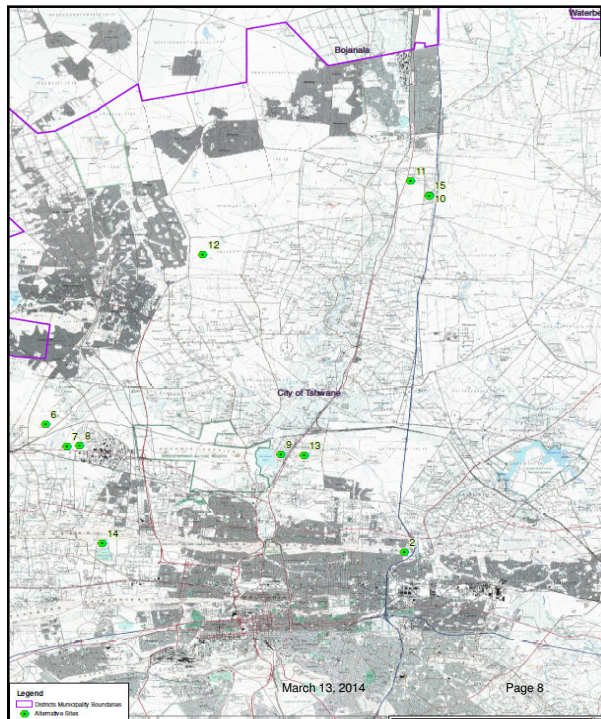


## Integrated EIA Process – NEMA and NEM:WA



March 13, 2014

Page 7



### Motivation

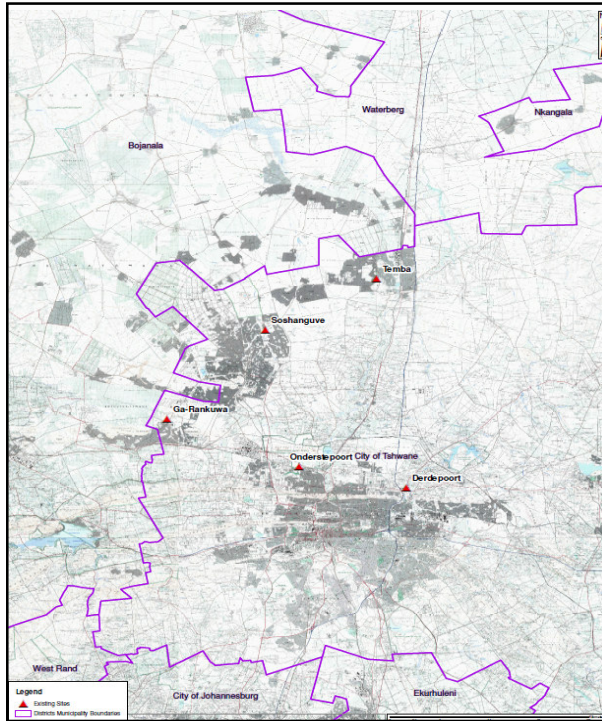
- Availability of landfill capacity in Gauteng
- Gauteng 2010 waste minimisation plan
- Need and desirability for regional landfill for Northern Parts of Gauteng
- Tshwane IDP (2004)

### Alternative site selection of 15 sites were conducted

#### Criteria Considered:

- Location (Latitude Longitude);
- Type of feature;
- Description e.g. operating quarry, sandworks etc;
- Approximate size (and excavation depth);
- Potential fatal flaws; and
- Underlying geology.



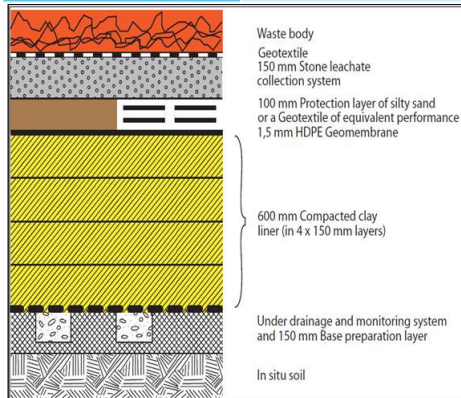


Landfill Name	Remaining Life (base date 2015)
Derdepoort	0 years
Ga-Rankuwa	9 -14 years
Onderstepoort	9 -14 years
Soshanguve	0 - 4 years
Temba	0 years



## Project Description

Classification of landfill - Draft new regulations and standards (DWA, 2013)	
Landfill classification	Class B
Size	Large (> 500 t/day)
Typical types of waste accepted	<ul style="list-style-type: none"> <li>Type 2 - Moderate Risk:</li> <li>Domestic waste;</li> <li>Post-consumer packaging</li> <li>Non-hazardous business waste;</li> <li>Uncontaminated builders rubble and excavated earth material;</li> <li>Waste tyres;</li> <li>Garden waste;</li> <li>Non-infectious animal carcasses;</li> <li>Type 2, 3 and 4 waste streams for disposal (general and hazardous);</li> <li>Waste where the leachable concentration of specific contaminants falls within acceptable thresholds, as described in GN 443</li> </ul>



Page 10



## Infrastructure

- Waste disposal cells
- Treatment facility
- Access control and perimeter fence
- Access roads
- Weighbridge
- Leachate collection system, stormwater berms, leachate treatment facility
- Pollution control ponds
- Weather station
- Admin buildings
- Fuel storage facility
- Electricity, water and sewage infrastructure

Presentation Title

March 13, 2014

Page 11





## Specialist Studies

NAME	IMPACT ASSESSMENT STUDY	COMPANY
Sam Pollard	Air Quality	AECOM
Lukas Niemand	Ecological	Pachnoda Consulting
Reinie Meyer	Geohydrological	Private
Anton van Vollenhoven	Heritage	Archaetnos
Garry Paterson	Soil and Agricultural Potential	ARC
Ingrid Snyman	Social Impact	Batho Earth
Gary Edwards	Traffic Impact	AECOM
Maryna Storie	Visual Impact	AECOM
Ina Venter	Wetland Delineation	SPEC
Johann Enslin	Surface Water	AECOM

March 13, 2014

Page 15



## Potential Impacts

Aspect	Issues
Air Quality	Health and nuisance impacts at sensitive receptors (residential properties)
Social	Inflow of workers, limited employment opportunities, decrease of property values, malodours, flies & insects & rodents, increasing traffic, visual impacts, health impacts, noise, crime, fires
Traffic	Increased traffic, access roads, traffic noise, increased risk of accidents occurring
Potential Cumulative Impacts	<ul style="list-style-type: none"> <li>• Air quality (odours and dust pollution)</li> <li>• Surface water and groundwater</li> <li>• Traffic impacts and noise impacts</li> <li>• Soil impacts (erosion)</li> <li>• Vectors and rodents</li> <li>• Windblown litter</li> <li>• Infrastructure impacts (e.g. existing pipelines &amp; pylons)</li> <li>• Positive impact on regional waste management, service delivery and development of infrastructure.</li> </ul>

March 13, 2014

Page 16





## Potential Impacts



### Involvement of I&AP

- Register as an I&AP and be involved
  - Register and be informed of all progress
  - Review project documentation
  - Comment and provide support/concerns and questions
  - Attend public participation events
- Key dates and activities in EIA Process

Date	Activity
May 2014	Submission of Final Scoping Report to DEA
June – July 2014	DEA Review of Final Scoping Report
July – August 2014	Specialist Studies
August – September 2014	Public Review of Draft EIA Report
December 2014	Submission of Final EIA Report to DEA
December – March 2015	DEA Review of EIA Report
May 2015	Environmental Authorisation Issued
May 2015	Notification of Environmental Authorisation

## Question and Comments

### **Please direct enquiries or comments to:**

Ms Mamokete Maimane or Ms Marti le Roux  
at AECOM SA (Pty) Ltd:

**Tel:** 012 421 3638 / 3615 **Fax:** 086 299 2145

### **Postal Address:**

PO Box 3173

Pretoria

0001

E-mail: [multisand@aecomemd.com](mailto:multisand@aecomemd.com)

March 13, 2014

Page 19



Thank You

