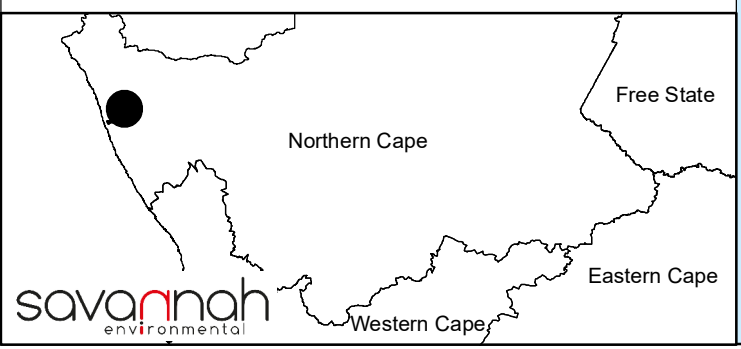


Grid Connection Infrastructure for the Namas Wind Farm, Northern Cape

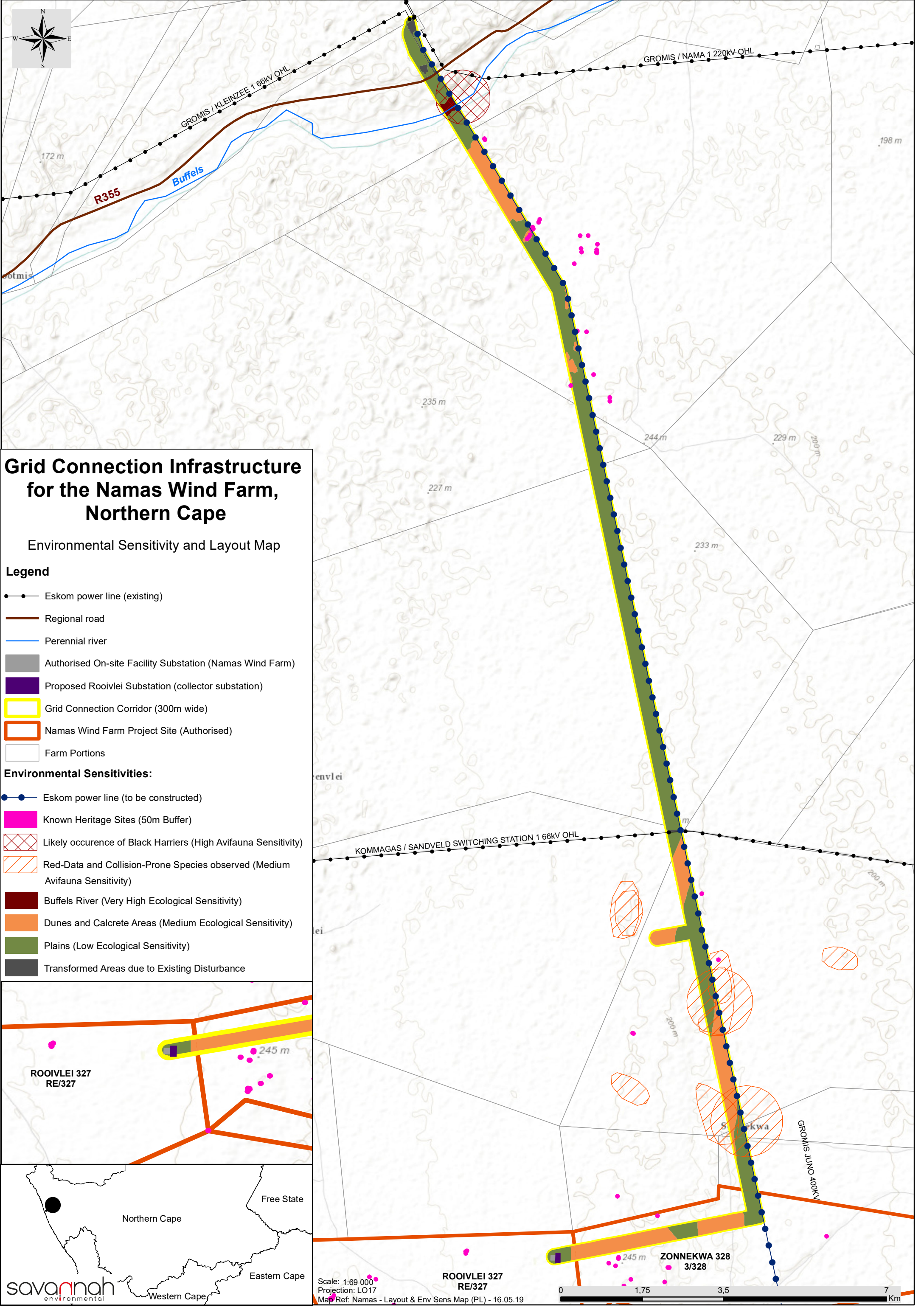
Locality Map

- Legend**
- Town
 - Eskom substation
 - Eskom power line (to be constructed)
 - Eskom power line (existing)
 - Regional road
 - Perennial river
 - Non-perennial river
 - Grid Connection Corridor (300m wide)
 - Namas Wind Farm Project Site (Authorised)
 - Farm Portions



Scale: 1:120 000
 Projection: LO17
 Map Ref: Namas - Locality Map (PL) - 22.03.19

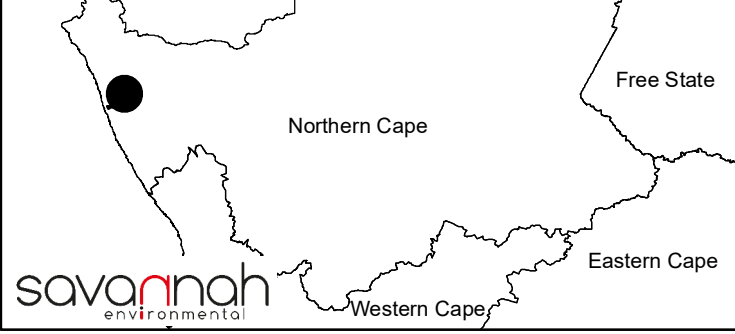
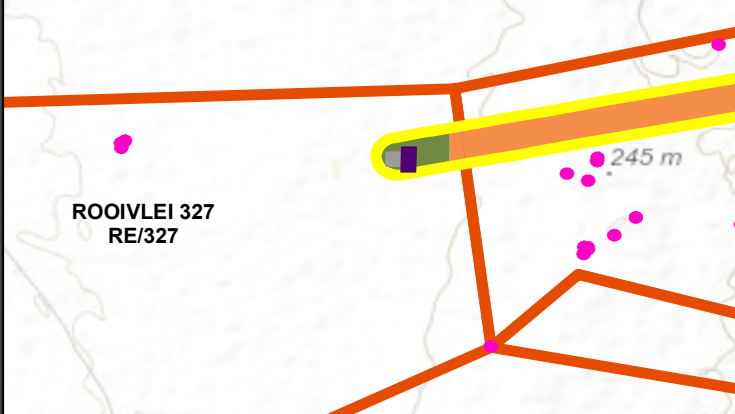


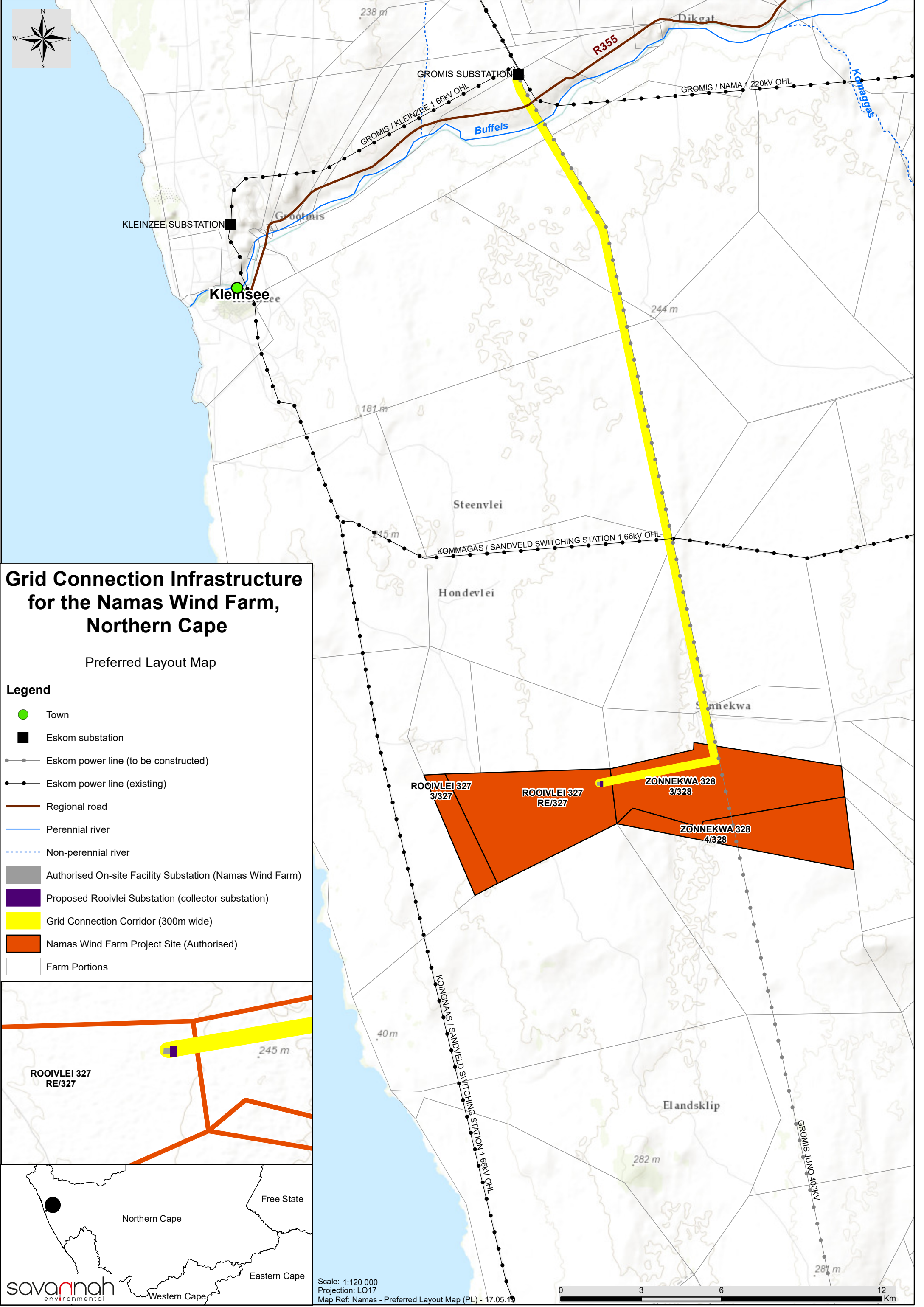


Grid Connection Infrastructure for the Namas Wind Farm, Northern Cape

Environmental Sensitivity and Layout Map

- Legend**
- Eskom power line (existing)
 - Regional road
 - Perennial river
 - Authorised On-site Facility Substation (Namas Wind Farm)
 - Proposed Rooivlei Substation (collector substation)
 - ▭ Grid Connection Corridor (300m wide)
 - ▭ Namas Wind Farm Project Site (Authorised)
 - ▭ Farm Portions
- Environmental Sensitivities:**
- Eskom power line (to be constructed)
 - Known Heritage Sites (50m Buffer)
 - ▨ Likely occurrence of Black Harriers (High Avifauna Sensitivity)
 - ▨ Red-Data and Collision-Prone Species observed (Medium Avifauna Sensitivity)
 - Buffels River (Very High Ecological Sensitivity)
 - Dunes and Calcrete Areas (Medium Ecological Sensitivity)
 - Plains (Low Ecological Sensitivity)
 - Transformed Areas due to Existing Disturbance

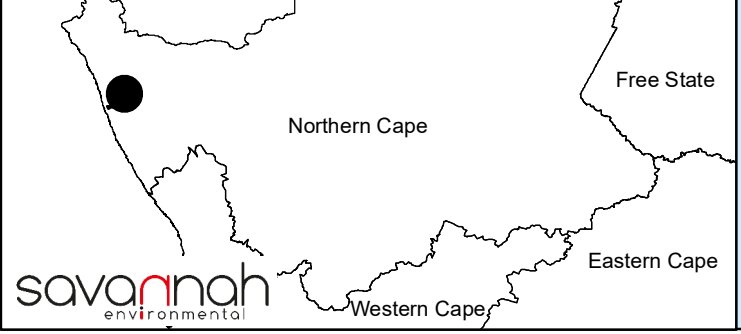
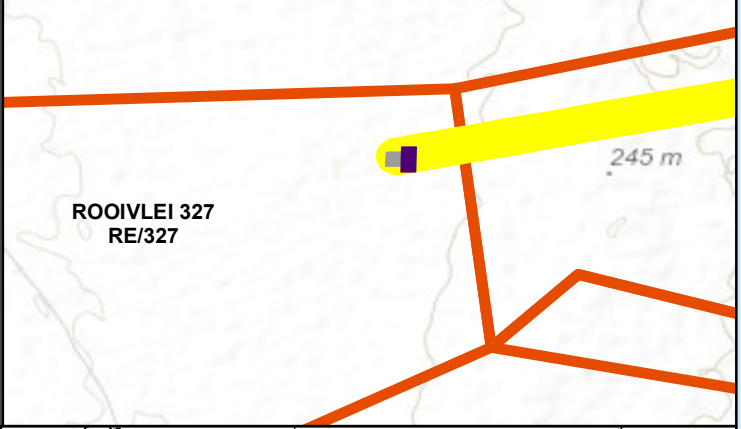




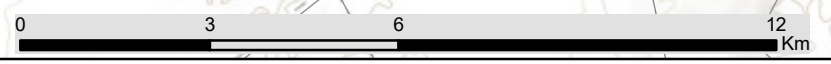
Grid Connection Infrastructure for the Namas Wind Farm, Northern Cape

Preferred Layout Map

- Legend**
- Town
 - Eskom substation
 - Eskom power line (to be constructed)
 - Eskom power line (existing)
 - Regional road
 - Perennial river
 - Non-perennial river
 - Authorised On-site Facility Substation (Namas Wind Farm)
 - Proposed Rooivlei Substation (collector substation)
 - Grid Connection Corridor (300m wide)
 - Namas Wind Farm Project Site (Authorised)
 - Farm Portions



Scale: 1:120 000
 Projection: LO17
 Map Ref: Namas - Preferred Layout Map (PL) - 17.05.19



Appendix K: Grid Connection Corridor Coordinates

Grid connection corridor coordinates (the grid connection infrastructure for the Namas Wind Farm will be developed within the 300m wide corridor):

Coordinates		
	Latitude (S)	Longitude (E)
Starting point (within the authorised Namas Wind Farm project site)	29° 50' 19,319" S	17° 12' 34,172" E
Middle Point	29° 43' 45,954" S	17° 13' 51,478" E
End point (existing Gromis Substation)	29° 35' 57,428" S	17° 10' 44,929" E