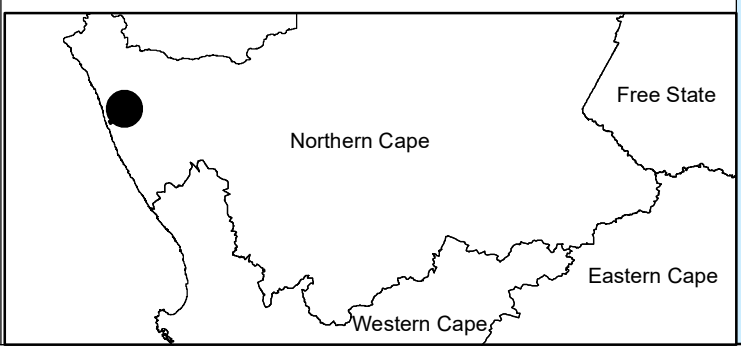


# Namas Wind Farm, Northern Cape

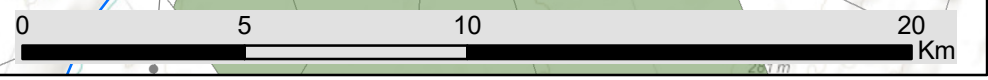
Locality Map

## Legend

- Town
- Eskom substation
- Eskom power line (to be constructed)
- Eskom power line (existing)
- Regional road
- Perennial river
- Non-perennial river
- Namaqua National Park
- Namas Wind Farm Project Site
- Farm Portions



Scale: 1:170 000  
 Projection: LO17  
 Map Ref: Namas - Locality Map (WF) - 06.06.18





# Namas Wind Farm, Northern Cape

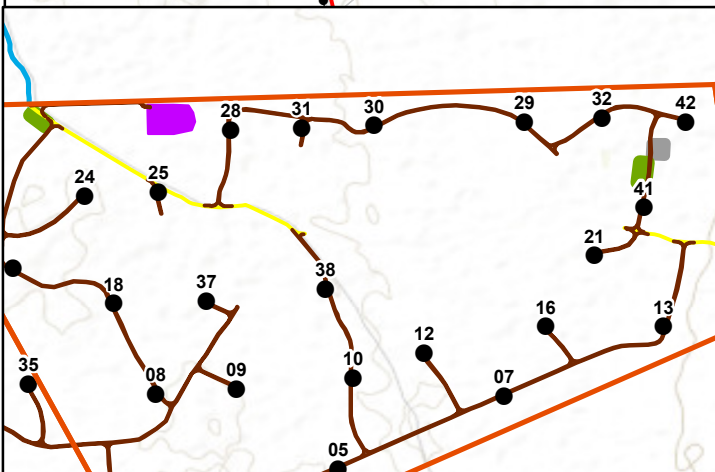
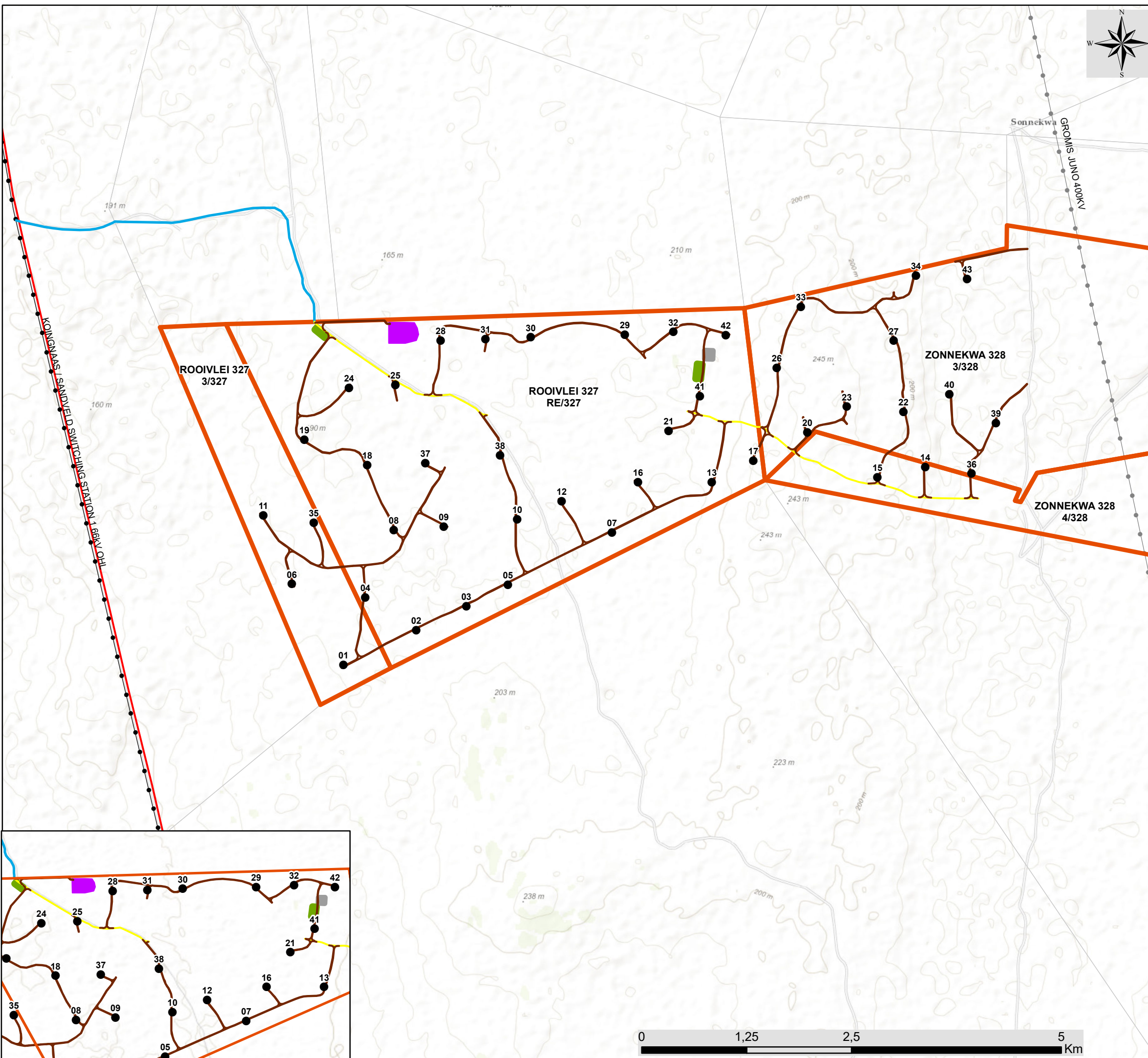
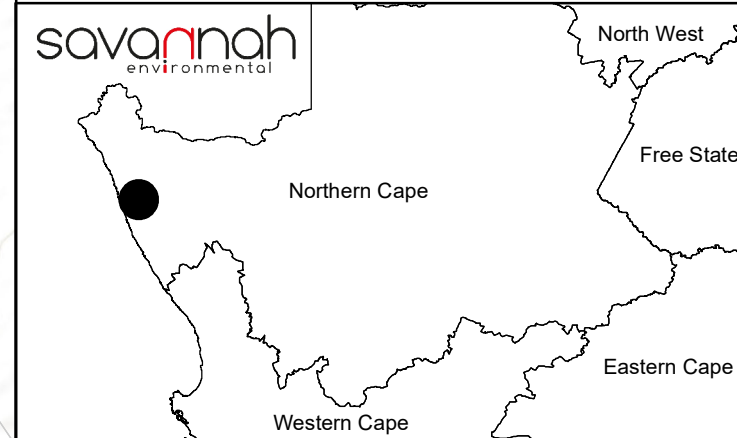
## Layout Map



### Legend

- Eskom power line (to be constructed)
  - Eskom power line (existing)
  - Main road
  - Farm Portions
  - Namas Wind Farm Affected Properties
- Layout Plan (development footprint):**
- Wind Turbine
  - Access Alternative (to be upgraded)
  - Existing roads to be upgraded
  - Internal Access Roads to be constructed
  - On-site Facility Substation
  - Laydown area
  - O&M Buildings

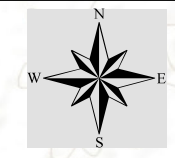
Scale: 1:44 000  
Projection: LO17  
Map Ref: Namas - Layout Map (zoom-in) (WF) - 13.09.18



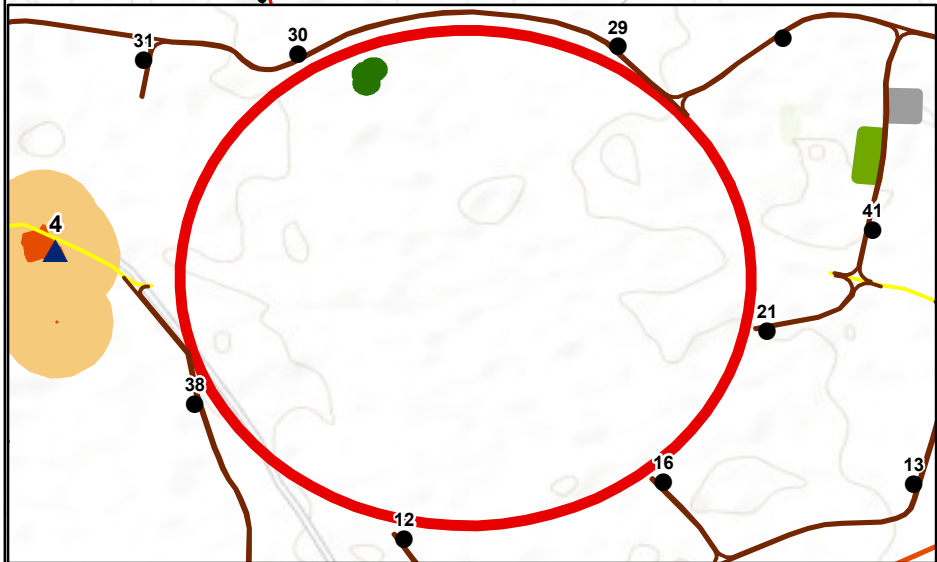
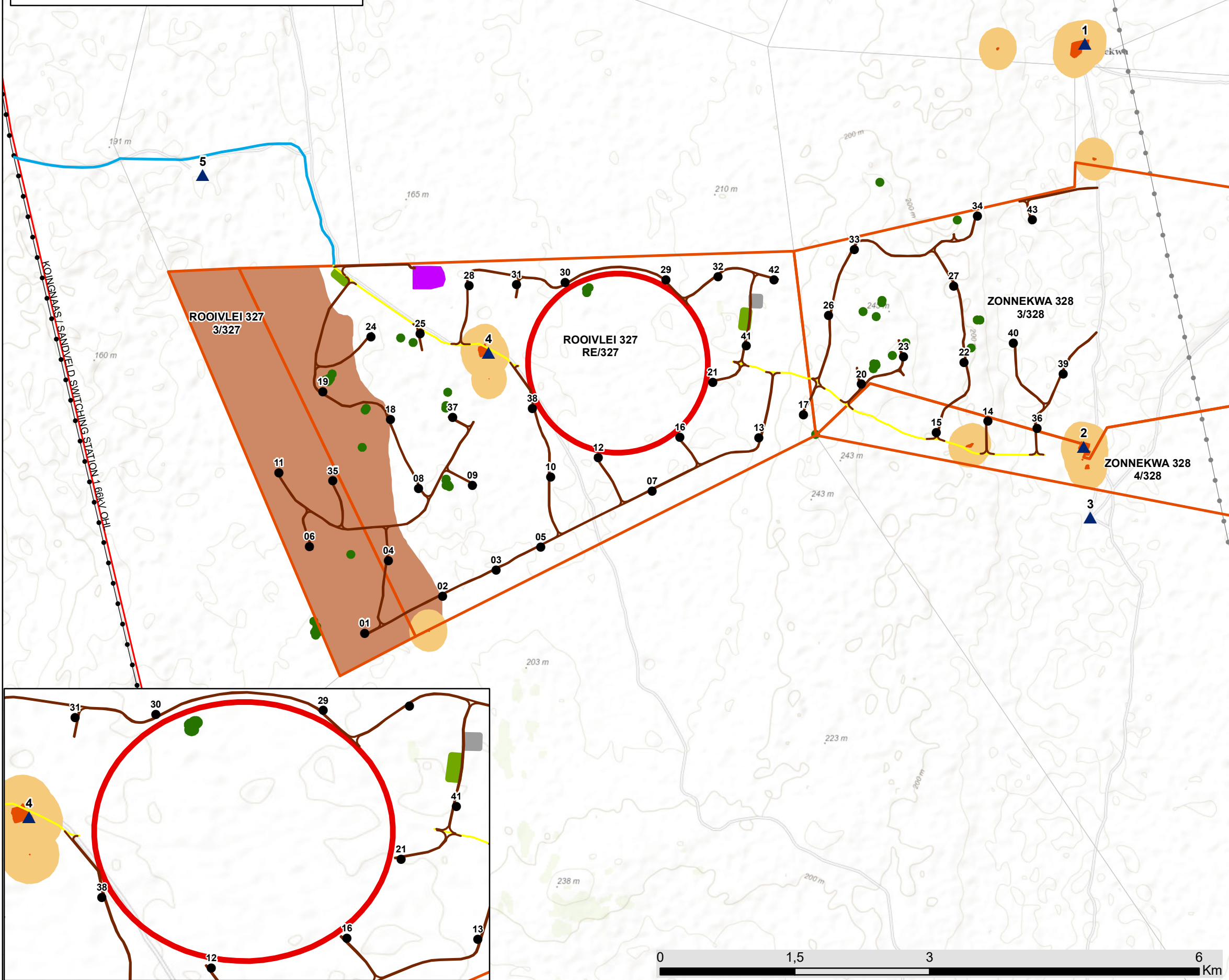


# Namas Wind Farm, Northern Cape

Environmental Sensitivity and Layout Map



- Legend**
- Eskom substation
  - Eskom power line (to be constructed)
  - Eskom power line (existing)
  - Regional road
  - Main road
  - Perennial river
  - - - Non-perennial river
  - Farm Portions
  - Namas Wind Farm Project Site
- Layout Plan (development footprint):**
- Wind Turbine
  - Access Alternative (to be upgraded)
  - Existing roads to be upgraded
  - Internal Access Roads to be constructed
  - On-site Facility Substation
  - Laydown area
  - O&M Buildings
- Sensitive Environmental Features:**
- ▲ Noise Sensitive Development
  - Secretarybird Nest 1km Buffer (Avifauna No-Go Area)
  - High Bat Sensitivity Area
  - 200m High Bat Sensitivity Buffer
  - Significant Heritage Sites (50m buffer)
  - Coastal Duneveld (Moderately High Ecological Sensitivity)



Scale: 1:44 000  
 Projection: LQ17  
 Map Ref: Namas - Sensitivity & Layout Map (WF) - 05.06.18

