

**SCREENING REPORT FOR AN ENVIRONMENTAL AUTHORIZATION AS
REQUIRED BY THE 2014 EIA REGULATIONS – PROPOSED DEVELOPMENT
FOOTPRINT ENVIRONMENTAL SENSITIVITY**

EIA Reference number: TBA

Project name: Umsobomvu Substations, Concrete Tower Manufacturing Facilities and Temporary Laydown Areas

Project title: Umsobomvu Substations, Concrete Tower Manufacturing Facilities and Temporary Laydown Areas

Date screening report generated: 14/11/2021 17:10:32

Applicant: Umsobomvu Wind Power (Pty) Ltd

Compiler: Coastal and Environmental Services (Pty) Ltd

Compiler signature:

R Greeff

Application Category: Transformation of land|Indigenous vegetation

Table of Contents

Proposed Project Location	3
Orientation map 1: General location	3
Map of proposed site and relevant area(s)	4
Cadastral details of the proposed site	4
Wind and Solar developments with an approved Environmental Authorisation or applications under consideration within 30 km of the proposed area	7
Environmental Management Frameworks relevant to the application	8
Environmental screening results and assessment outcomes	8
Relevant development incentives, restrictions, exclusions or prohibitions	8
Map indicating proposed development footprint within applicable development incentive, restriction, exclusion or prohibition zones	9
Proposed Development Area Environmental Sensitivity	9
Specialist assessments identified	10
Results of the environmental sensitivity of the proposed area	12
MAP OF RELATIVE AGRICULTURE THEME SENSITIVITY	12
MAP OF RELATIVE ANIMAL SPECIES THEME SENSITIVITY	13
MAP OF RELATIVE AQUATIC BIODIVERSITY THEME SENSITIVITY	14
MAP OF RELATIVE ARCHAEOLOGICAL AND CULTURAL HERITAGE THEME SENSITIVITY	15
MAP OF RELATIVE CIVIL AVIATION THEME SENSITIVITY	16
MAP OF RELATIVE DEFENCE THEME SENSITIVITY	17
MAP OF RELATIVE PALEONTOLOGY THEME SENSITIVITY	18
MAP OF RELATIVE PLANT SPECIES THEME SENSITIVITY	19
MAP OF RELATIVE TERRESTRIAL BIODIVERSITY THEME SENSITIVITY	20

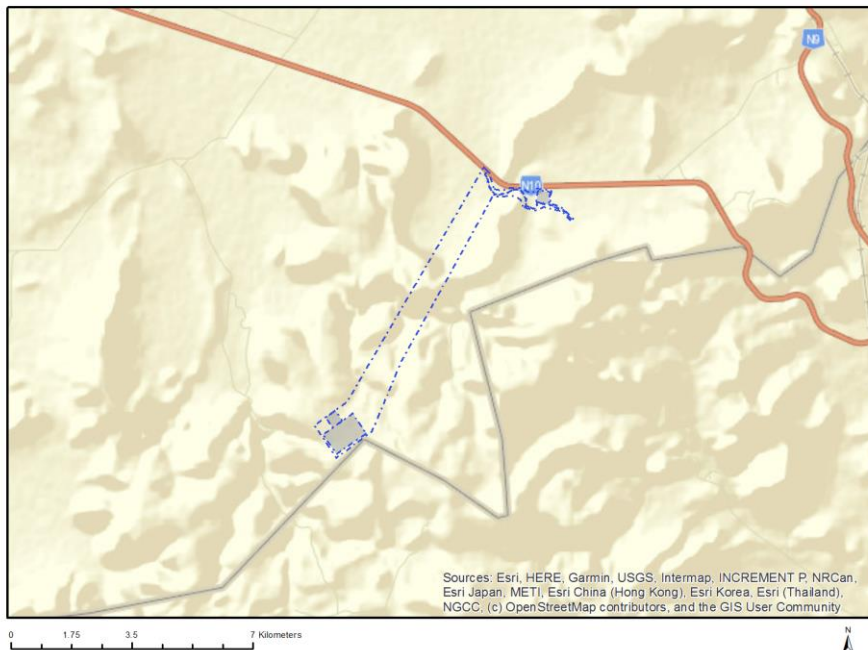
Proposed Project Location

Orientation map 1: General location

General Orientation: Umsobomvu Substations, Concrete Tower Manufacturing Facilities and Temporary Laydown Areas



Map of proposed site and relevant area(s)



Cadastral details of the proposed site

Property details:

No	Farm Name	Farm/ Erf No	Portion	Latitude	Longitude	Property Type
1		3	0	31°23'0.48S	24°49'20.9E	Farm
2		3	0	31°20'54.03S	24°48'0.62E	Farm
3	WINTERHOEK	118	0	31°15'53.95S	24°51'15.15E	Farm
4	HARTEBEESTPLAAT	135	0	31°21'0.79S	24°50'31.64E	Farm
5	BOSJESMANS FOUNTAIN	136	0	31°19'28.57S	24°49'57.45E	Farm
6	HARTEBEESTPLAAT	135	0	31°20'58.89S	24°50'36.07E	Farm Portion
7		3	8	31°21'43.75S	24°48'56.48E	Farm Portion
8	BOSJESMANS FOUNTAIN	136	0	31°19'26.89S	24°50'5.67E	Farm Portion
9		3	8	31°21'45.73S	24°48'55.33E	Farm Portion
10	WINTERHOEK	118	0	31°18'35.74S	24°51'29.51E	Farm Portion
11	WINTERHOEK	118	2	31°18'1.46S	24°51'48.38E	Farm Portion

Development footprint¹ vertices:

Footprint	Latitude	Longitude
1	31°18'4.41S	24°52'14.21E
1	31°18'5.83S	24°52'25.44E

¹ “development footprint”, means the area within the site on which the development will take place and includes all ancillary developments for example roads, power lines, boundary walls, paving etc. which require vegetation clearance or which will be disturbed and for which the application has been submitted.

1	31°18'15.46S	24°52'23.79E
1	31°18'14.04S	24°52'12.57E
1	31°18'4.41S	24°52'14.21E
2	31°21'14.43S	24°49'2.06E
2	31°21'6.43S	24°48'55.47E
2	31°21'0.85S	24°49'4.8E
2	31°21'8.83S	24°49'11.34E
2	31°21'14.43S	24°49'2.06E
3	31°21'35.83S	24°49'6.03E
3	31°21'19.8S	24°48'53.1E
3	31°21'3.03S	24°49'20.94E
3	31°21'18.96S	24°49'33.94E
3	31°21'35.83S	24°49'6.03E
4	31°17'47.07S	24°51'24.54E
4	31°17'50.81S	24°51'29.31E
4	31°17'50.38S	24°51'28.17E
4	31°17'50.14S	24°51'27.37E
4	31°17'50.23S	24°51'26.81E
4	31°17'50.75S	24°51'26.09E
4	31°17'51.26S	24°51'25.8E
4	31°17'51.7S	24°51'25.72E
4	31°17'52.36S	24°51'25.83E
4	31°17'54.01S	24°51'26.47E
4	31°17'55.94S	24°51'27.36E
4	31°17'58.29S	24°51'28.2E
4	31°18'0.67S	24°51'29.08E
4	31°18'2.07S	24°51'29.57E
4	31°18'2.89S	24°51'30.01E
4	31°18'3.79S	24°51'30.68E
4	31°18'5.02S	24°51'31.66E
4	31°18'6.31S	24°51'32.61E
4	31°18'7.13S	24°51'33.32E
4	31°18'7.64S	24°51'33.91E
4	31°18'7.89S	24°51'35.06E
4	31°18'7.88S	24°51'36.15E
4	31°18'7.7S	24°51'37.57E
4	31°18'7.39S	24°51'39.84E
4	31°18'6.99S	24°51'42.64E
4	31°18'6.49S	24°51'45.26E
4	31°18'6.27S	24°51'45.86E
4	31°18'5.71S	24°51'46.97E
4	31°18'4.72S	24°51'48.84E
4	31°18'3.82S	24°51'50.63E
4	31°18'3.48S	24°51'51.84E
4	31°18'3.32S	24°51'53.2E
4	31°18'3.33S	24°51'55.29E
4	31°18'3.78S	24°51'56.61E
4	31°18'4.37S	24°51'57.78E
4	31°18'4.98S	24°51'58.66E
4	31°18'5.78S	24°51'59.54E
4	31°18'6.25S	24°51'59.88E
4	31°18'7.1S	24°52'0.34E
4	31°18'8.24S	24°52'1.13E
4	31°18'9.71S	24°52'2.21E
4	31°18'10.76S	24°52'2.9E
4	31°18'11.73S	24°52'3.34E
4	31°18'12.52S	24°52'3.53E
4	31°18'13.34S	24°52'3.49E
4	31°18'14.2S	24°52'3.39E
4	31°18'15.1S	24°52'3.23E

4	31°18'16.11S	24°52'3.01E
4	31°18'16.96S	24°52'3.12E
4	31°18'18.95S	24°52'10.87E
4	31°18'18.91S	24°52'11.44E
4	31°18'18.63S	24°52'12.06E
4	31°18'18.17S	24°52'12.52E
4	31°18'16.96S	24°52'12.79E
4	31°18'15.32S	24°52'13.21E
4	31°18'14.81S	24°52'13.39E
4	31°18'14.57S	24°52'13.49E
4	31°18'14.39S	24°52'13.62E
4	31°18'14.16S	24°52'13.79E
4	31°18'14.08S	24°52'14.52E
4	31°18'14.66S	24°52'18.11E
4	31°18'15.53S	24°52'23.77E
4	31°18'17.71S	24°52'30.39E
4	31°18'20.02S	24°52'37.36E
4	31°18'20.16S	24°52'37.94E
4	31°18'22.73S	24°52'40.5E
4	31°18'27.88S	24°52'45.7E
4	31°18'28.29S	24°52'45.35E
4	31°18'21.02S	24°52'38.08E
4	31°18'20.61S	24°52'37.44E
4	31°18'17.09S	24°52'27.01E
4	31°18'16.01S	24°52'23.41E
4	31°18'15.01S	24°52'17.04E
4	31°18'14.79S	24°52'15.2E
4	31°18'14.79S	24°52'14.8E
4	31°18'14.97S	24°52'14.22E
4	31°18'15.39S	24°52'13.79E
4	31°18'16.85S	24°52'13.49E
4	31°18'18.6S	24°52'12.98E
4	31°18'19.35S	24°52'12.59E
4	31°18'19.48S	24°52'11.52E
4	31°18'19.38S	24°52'10.64E
4	31°18'19.09S	24°52'9.35E
4	31°18'18.48S	24°52'7.17E
4	31°18'17.93S	24°52'5.19E
4	31°18'17.58S	24°52'3.5E
4	31°18'17.43S	24°52'2.99E
4	31°18'17.61S	24°52'1.77E
4	31°18'16.9S	24°52'1.96E
4	31°18'15.63S	24°52'2.41E
4	31°18'14.39S	24°52'2.73E
4	31°18'12.93S	24°52'2.94E
4	31°18'12.14S	24°52'2.86E
4	31°18'11.37S	24°52'2.55E
4	31°18'10.82S	24°52'2.31E
4	31°18'10.13S	24°52'1.86E
4	31°18'9.69S	24°52'1.48E
4	31°18'8.71S	24°52'0.8E
4	31°18'7.8S	24°52'0.12E
4	31°18'6.9S	24°51'59.61E
4	31°18'6.07S	24°51'59.08E
4	31°18'5.27S	24°51'58.13E
4	31°18'4.8S	24°51'57.4E
4	31°18'4.05S	24°51'55.99E
4	31°18'3.8S	24°51'55.11E
4	31°18'3.8S	24°51'53.02E
4	31°18'3.94S	24°51'51.89E

4	31°18'4.3S	24°51'50.83E
4	31°18'5.11S	24°51'49.11E
4	31°18'5.96S	24°51'47.59E
4	31°18'6.54S	24°51'46.45E
4	31°18'6.95S	24°51'45.45E
4	31°18'7.08S	24°51'44.67E
4	31°18'7.43S	24°51'42.66E
4	31°18'7.68S	24°51'41.2E
4	31°18'8.41S	24°51'36.15E
4	31°18'8.37S	24°51'35.03E
4	31°18'8.26S	24°51'34.31E
4	31°18'7.91S	24°51'33.47E
4	31°18'7.55S	24°51'33.08E
4	31°18'7.06S	24°51'32.59E
4	31°18'6.02S	24°51'31.66E
4	31°18'5.04S	24°51'30.93E
4	31°18'4.01S	24°51'30.15E
4	31°18'3.2S	24°51'29.51E
4	31°18'2.7S	24°51'29.18E
4	31°18'2.3S	24°51'28.99E
4	31°18'1.53S	24°51'28.7E
4	31°18'0.93S	24°51'28.44E
4	31°18'0.07S	24°51'28.1E
4	31°17'59.46S	24°51'27.91E
4	31°17'58.23S	24°51'27.46E
4	31°17'57.5S	24°51'27.18E
4	31°17'56.36S	24°51'26.68E
4	31°17'55.14S	24°51'26.18E
4	31°17'52.57S	24°51'25.1E
4	31°17'52.34S	24°51'25.08E
4	31°17'51.85S	24°51'24.96E
4	31°17'51.58S	24°51'24.98E
4	31°17'50.99S	24°51'25.05E
4	31°17'49.25S	24°51'25.9E
4	31°17'48.95S	24°51'25.78E
4	31°17'47.98S	24°51'25.1E
4	31°17'47.07S	24°51'24.54E

Wind and Solar developments with an approved Environmental Authorisation or applications under consideration within 30 km of the proposed area

No	EIA Reference No	Classification	Status of application	Distance from proposed area (km)
1	12/12/20/2653/AM4	Solar PV	Approved	16.1
2	14/12/16/3/3/1/735	Solar PV	Approved	16.7
3	14/12/16/3/3/1/729	Solar PV	Approved	18.6
4	14/12/16/3/3/1/730	Solar PV	Approved	21.5
5	12/12/20/2653	Solar PV	Approved	16.1
6	12/12/20/2654	Solar PV	Approved	15.9
7	12/12/20/2465/2	Solar PV	Approved	8.3
8	14/12/16/3/3/1/1730/AM1	Solar PV	Approved	21.5
9	14/12/16/3/3/1/553	Solar PV	Approved	18.8
10	14/12/16/3/3/2/355	Solar PV	Approved	3.5
11	12/12/20/2654/AM4	Solar PV	Approved	15.9
12	14/12/16/3/3/2/354	Solar PV	Approved	28.9

Environmental Management Frameworks relevant to the application

No intersections with EMF areas found.

Environmental screening results and assessment outcomes

The following sections contain a summary of any development incentives, restrictions, exclusions or prohibitions that apply to the proposed development footprint as well as the most environmental sensitive features on the footprint based on the footprint sensitivity screening results for the application classification that was selected. The application classification selected for this report is:

Transformation of land | Indigenous vegetation.

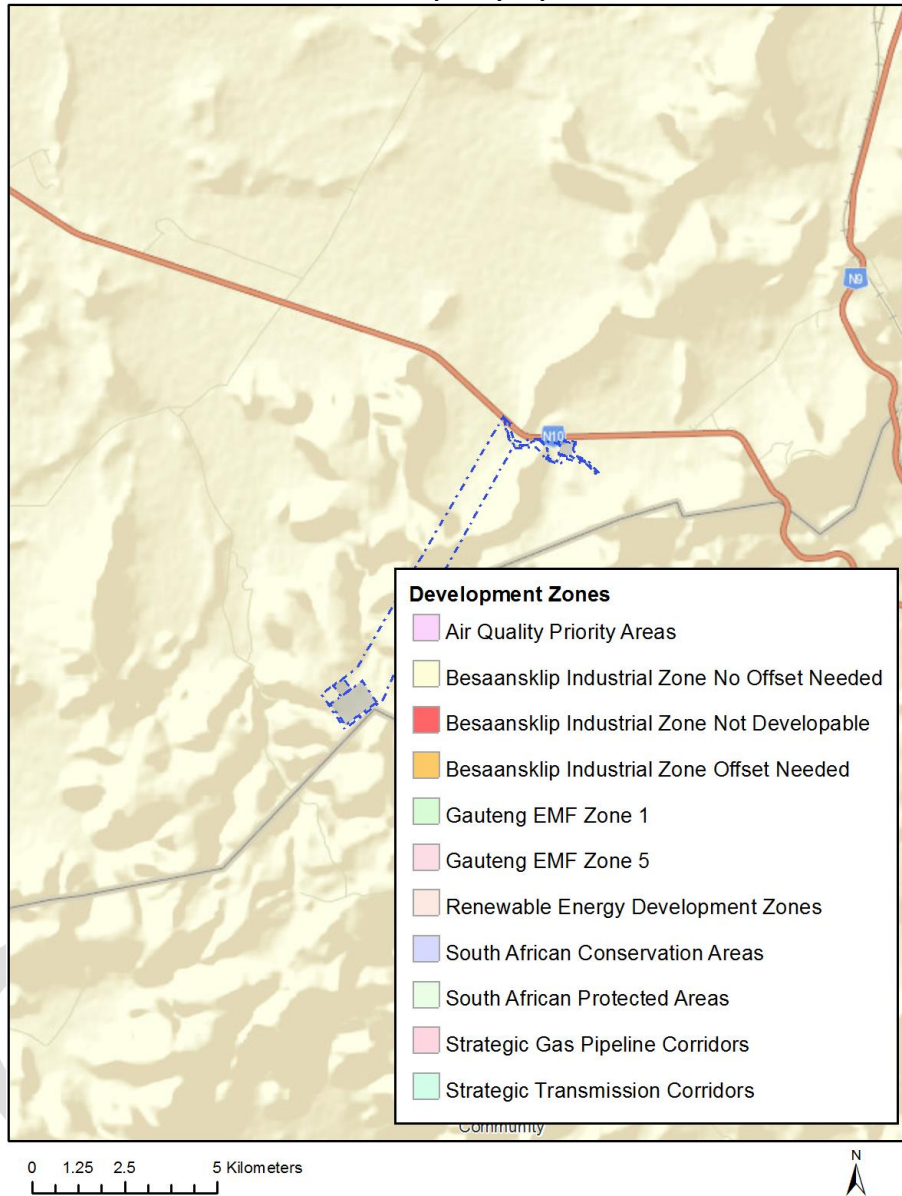
Relevant development incentives, restrictions, exclusions or prohibitions

The following development incentives, restrictions, exclusions or prohibitions and their implications that apply to this footprint are indicated below.

No intersection with any development zones found.

Map indicating proposed development footprint within applicable development incentive, restriction, exclusion or prohibition zones

Project Location: Umsobomvu Substations, Concrete Tower Manufacturing Facilities and Temporary Laydown Areas



Proposed Development Area Environmental Sensitivity

The following summary of the development footprint environmental sensitivities is identified. Only the highest environmental sensitivity is indicated. The footprint environmental sensitivities for the proposed development footprint as identified, are indicative only and must be verified on site by a suitably qualified person before the specialist assessments identified below can be confirmed.

Theme	Very High sensitivity	High sensitivity	Medium sensitivity	Low sensitivity
-------	-----------------------	------------------	--------------------	-----------------

Agriculture Theme		X		
Animal Species Theme		X		
Aquatic Biodiversity Theme				X
Archaeological and Cultural Heritage Theme		X		
Civil Aviation Theme				X
Defence Theme				X
Paleontology Theme	X			
Plant Species Theme				X
Terrestrial Biodiversity Theme	X			

Specialist assessments identified

Based on the selected classification, and the environmental sensitivities of the proposed development footprint, the following list of specialist assessments have been identified for inclusion in the assessment report. It is the responsibility of the EAP to confirm this list and to motivate in the assessment report, the reason for not including any of the identified specialist study including the provision of photographic evidence of the footprint situation.

N o	Special ist assess ment	Assessment Protocol
1	Landscape/Visual Impact Assessment	https://screening.environment.gov.za/ScreeningDownloads/AssessmentProtocols/Gazetted_General_Requirement_Assessment_Protocols.pdf
2	Archaeological and Cultural Heritage Impact Assessment	https://screening.environment.gov.za/ScreeningDownloads/AssessmentProtocols/Gazetted_General_Requirement_Assessment_Protocols.pdf
3	Palaeontology Impact Assessment	https://screening.environment.gov.za/ScreeningDownloads/AssessmentProtocols/Gazetted_General_Requirement_Assessment_Protocols.pdf
4	Terrestrial Biodiversity Impact Assessment	https://screening.environment.gov.za/ScreeningDownloads/AssessmentProtocols/Gazetted_Terrestrial_Biodiversity_Assessment_Protocols.pdf
5	Aquatic Biodiversity Impact Assessment	https://screening.environment.gov.za/ScreeningDownloads/AssessmentProtocols/Gazetted_Aquatic_Biodiversity_Assessment_Protocols.pdf
6	Avian Impact Assessment	https://screening.environment.gov.za/ScreeningDownloads/AssessmentProtocols/Gazetted_Avifauna_Assessment_Protocols.pdf

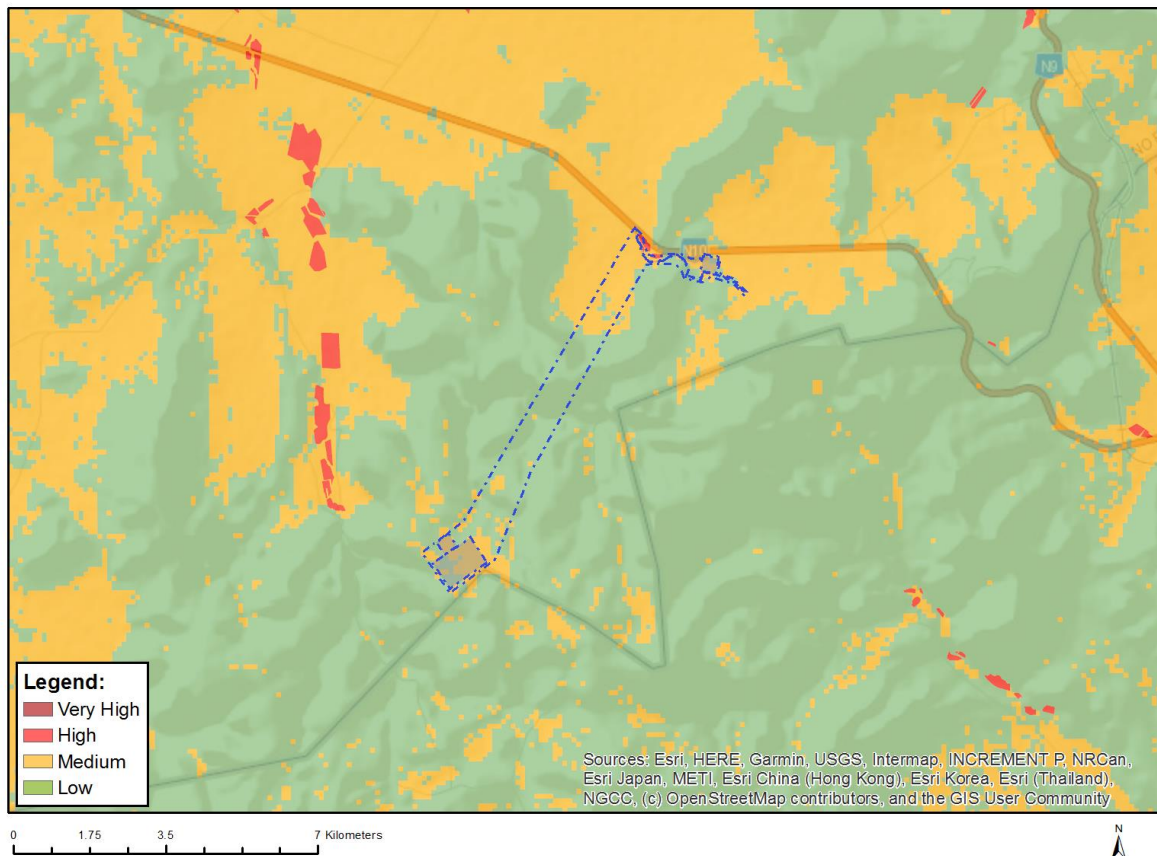
7	Socio-Economic Assessment	https://screening.environment.gov.za/ScreeningDownloads/AssessmentProtocols/Gazetted_General_Requirement_Assessment_Protocols.pdf
8	Plant Species Assessment	https://screening.environment.gov.za/ScreeningDownloads/AssessmentProtocols/Gazetted_Plant_Species_Assessment_Protocols.pdf
9	Animal Species Assessment	https://screening.environment.gov.za/ScreeningDownloads/AssessmentProtocols/Gazetted_Animal_Species_Assessment_Protocols.pdf

OFFICIAL

Results of the environmental sensitivity of the proposed area.

The following section represents the results of the screening for environmental sensitivity of the proposed footprint for relevant environmental themes associated with the project classification. It is the duty of the EAP to ensure that the environmental themes provided by the screening tool are comprehensive and complete for the project. Refer to the disclaimer.

MAP OF RELATIVE AGRICULTURE THEME SENSITIVITY

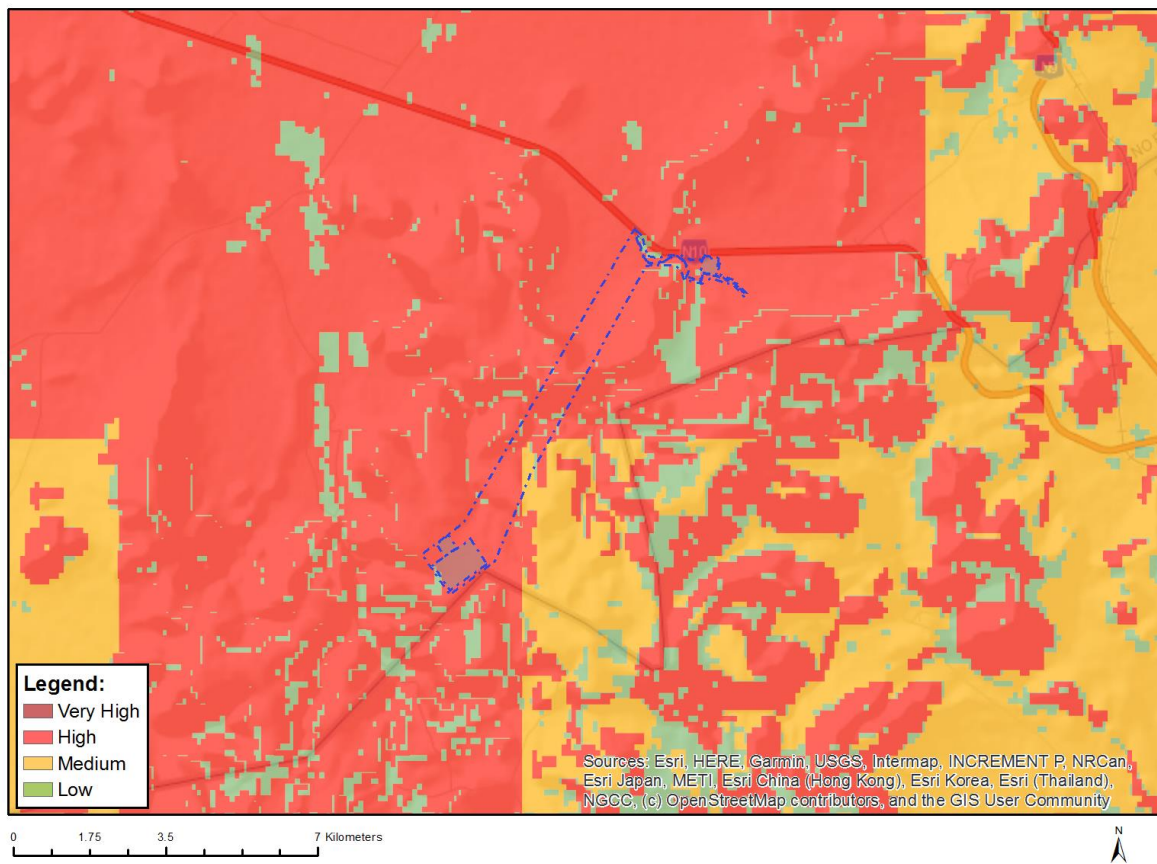


Very High sensitivity	High sensitivity	Medium sensitivity	Low sensitivity
	X		

Sensitivity Features:

Sensitivity	Feature(s)
High	Annual Crop Cultivation / Planted Pastures Rotation; Land capability; 06. Low-Moderate/07. Low-Moderate/08. Moderate
Low	Land capability; 01. Very low/02. Very low/03. Low-Very low/04. Low-Very low/05. Low
Medium	Land capability; 06. Low-Moderate/07. Low-Moderate/08. Moderate

MAP OF RELATIVE ANIMAL SPECIES THEME SENSITIVITY



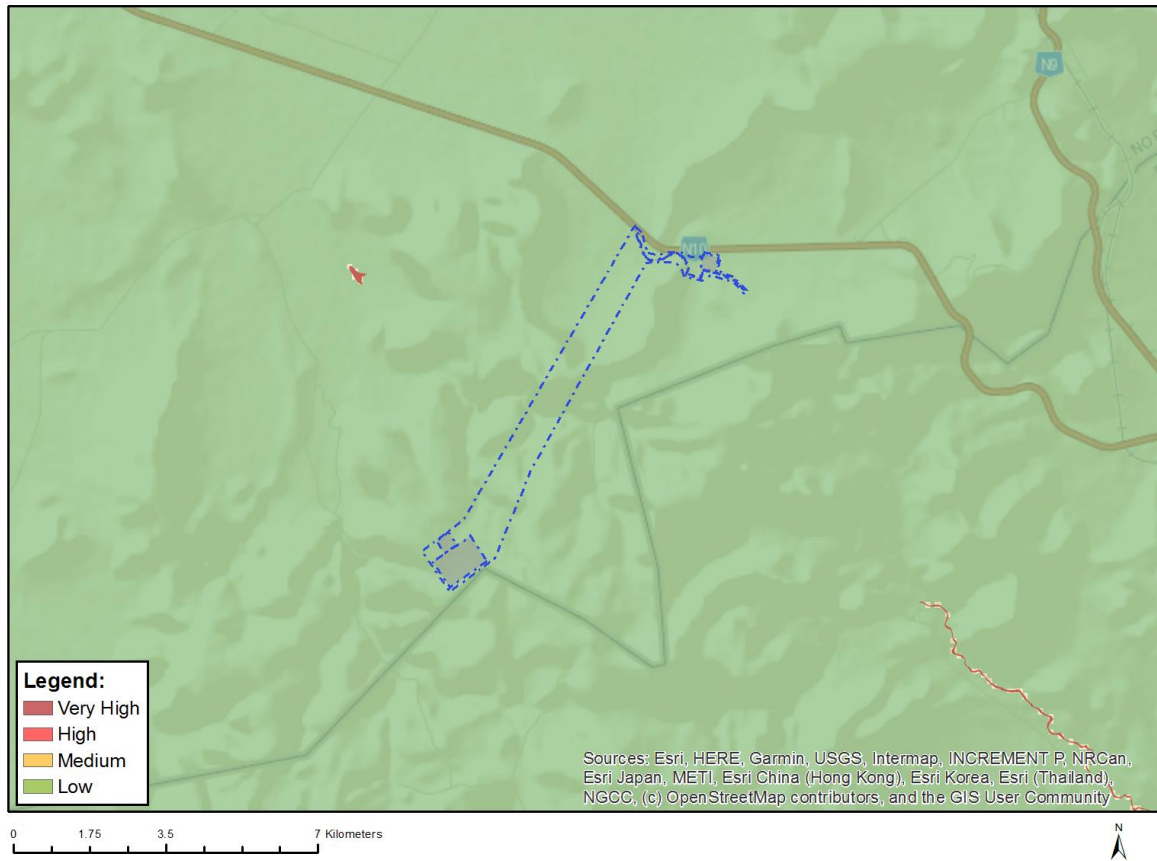
Where only a sensitive plant unique number or sensitive animal unique number is provided in the screening report and an assessment is required, the environmental assessment practitioner (EAP) or specialist is required to email SANBI at eiadatarequests@sanbi.org.za listing all sensitive species with their unique identifiers for which information is required. The name has been withheld as the species may be prone to illegal harvesting and must be protected. SANBI will release the actual species name after the details of the EAP or specialist have been documented.

Very High sensitivity	High sensitivity	Medium sensitivity	Low sensitivity
	X		

Sensitivity Features:

Sensitivity	Feature(s)
High	Aves-Aquila verreauxii
High	Aves-Neotis ludwigii
Low	Low sensitivity

MAP OF RELATIVE AQUATIC BIODIVERSITY THEME SENSITIVITY

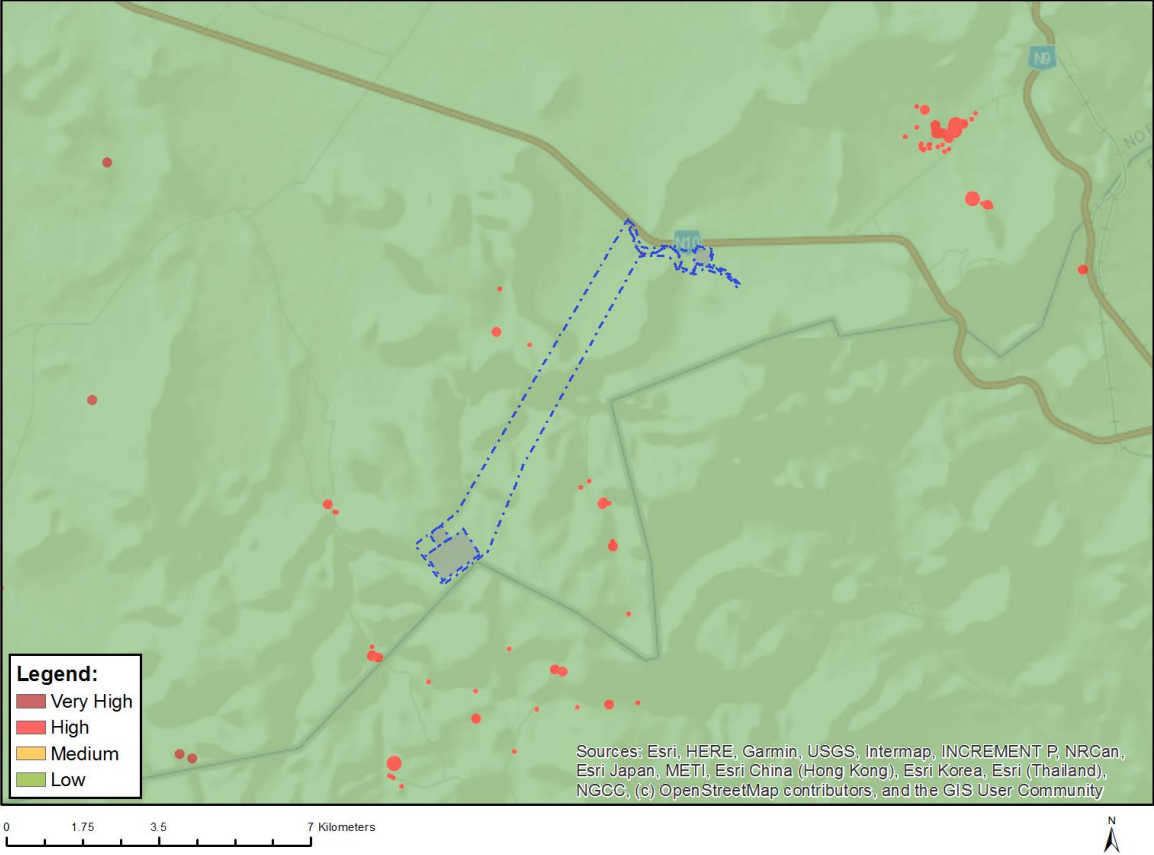


Very High sensitivity	High sensitivity	Medium sensitivity	Low sensitivity
			X

Sensitivity Features:

Sensitivity	Feature(s)
Low	Low sensitivity

MAP OF RELATIVE ARCHAEOLOGICAL AND CULTURAL HERITAGE THEME SENSITIVITY

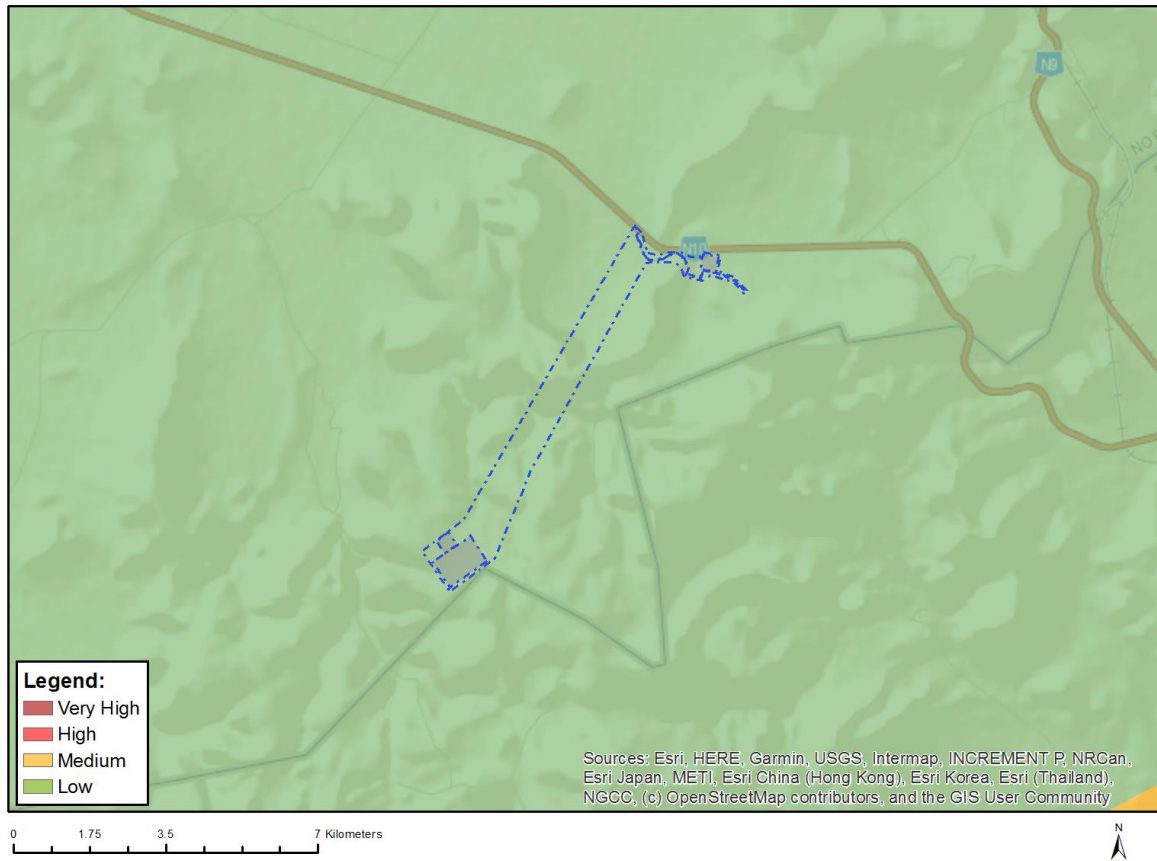


Very High sensitivity	High sensitivity	Medium sensitivity	Low sensitivity
	X		

Sensitivity Features:

Sensitivity	Feature(s)
High	Within 50m of a Grade IIIc Heritage site
Low	Low sensitivity

MAP OF RELATIVE CIVIL AVIATION THEME SENSITIVITY

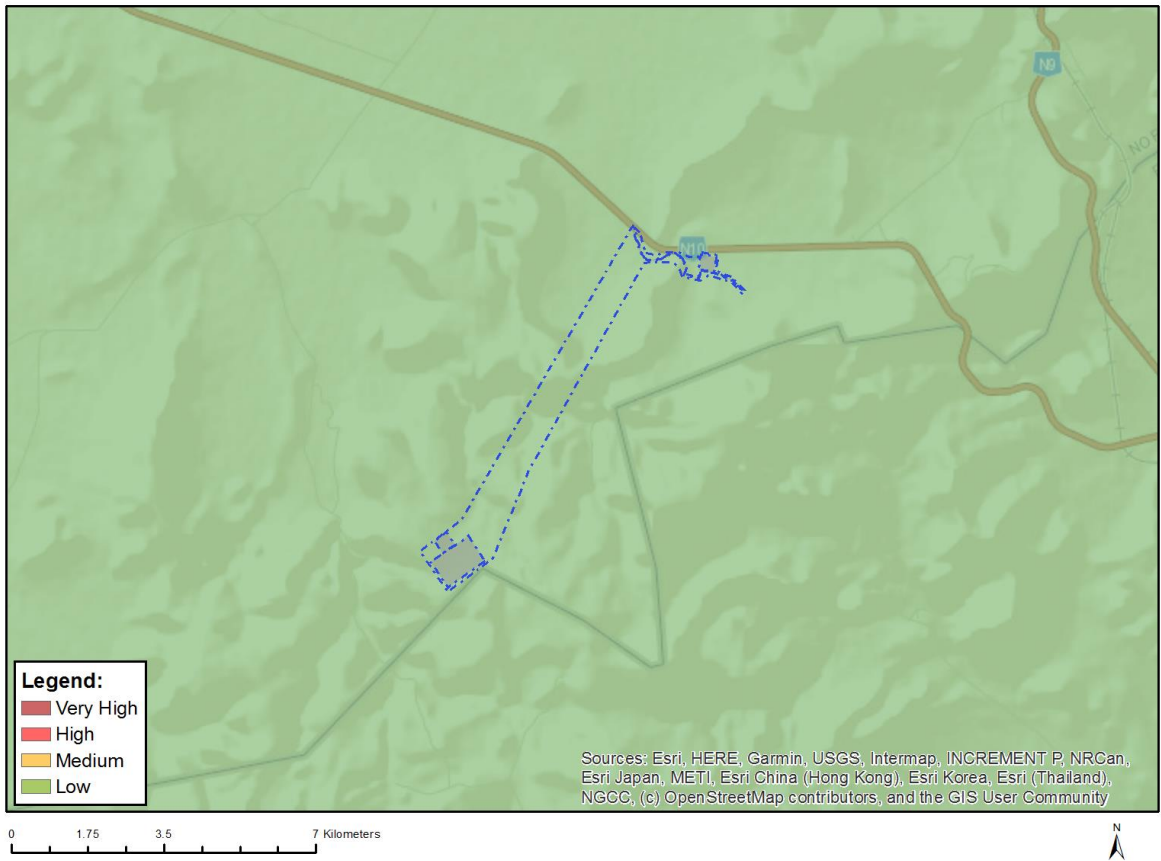


Very High sensitivity	High sensitivity	Medium sensitivity	Low sensitivity
			X

Sensitivity Features:

Sensitivity	Feature(s)
Low	Low sensitivity

MAP OF RELATIVE DEFENCE THEME SENSITIVITY

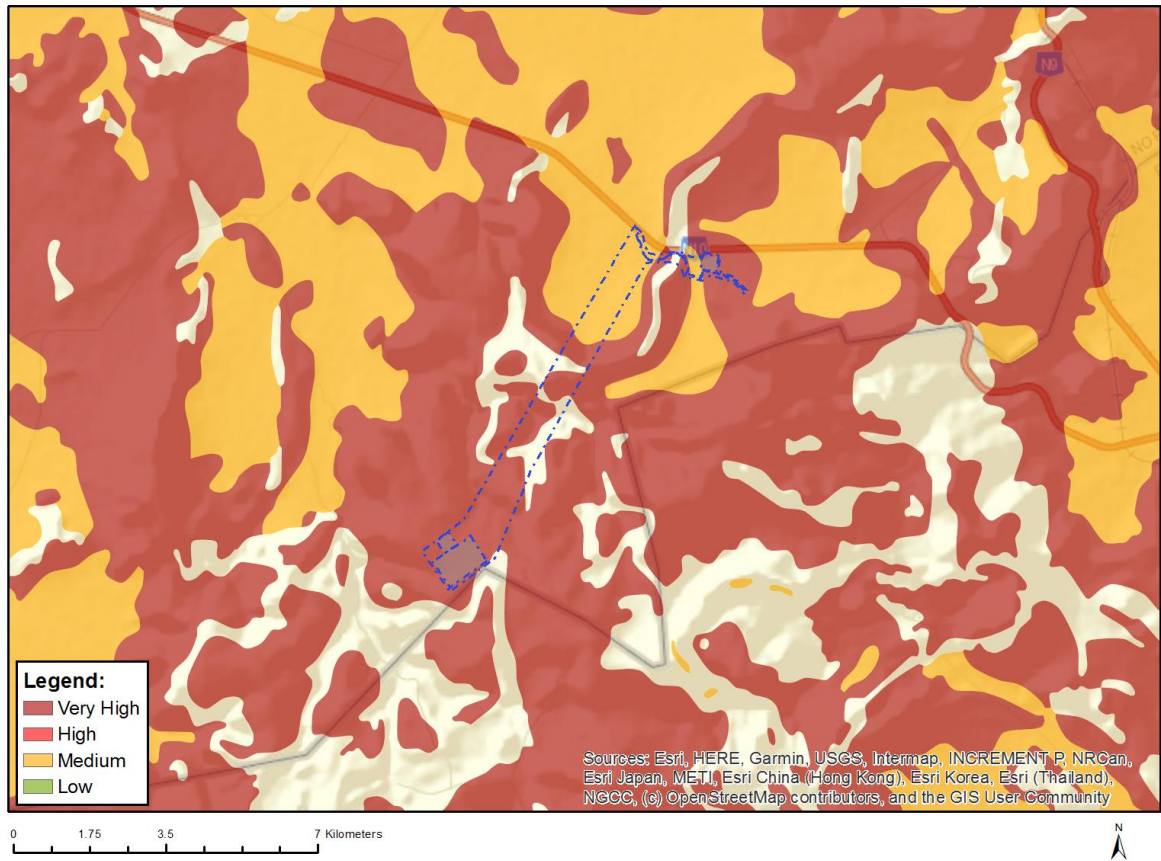


Very High sensitivity	High sensitivity	Medium sensitivity	Low sensitivity
			X

Sensitivity Features:

Sensitivity	Feature(s)
Low	Low Sensitivity

MAP OF RELATIVE PALEONTOLOGY THEME SENSITIVITY

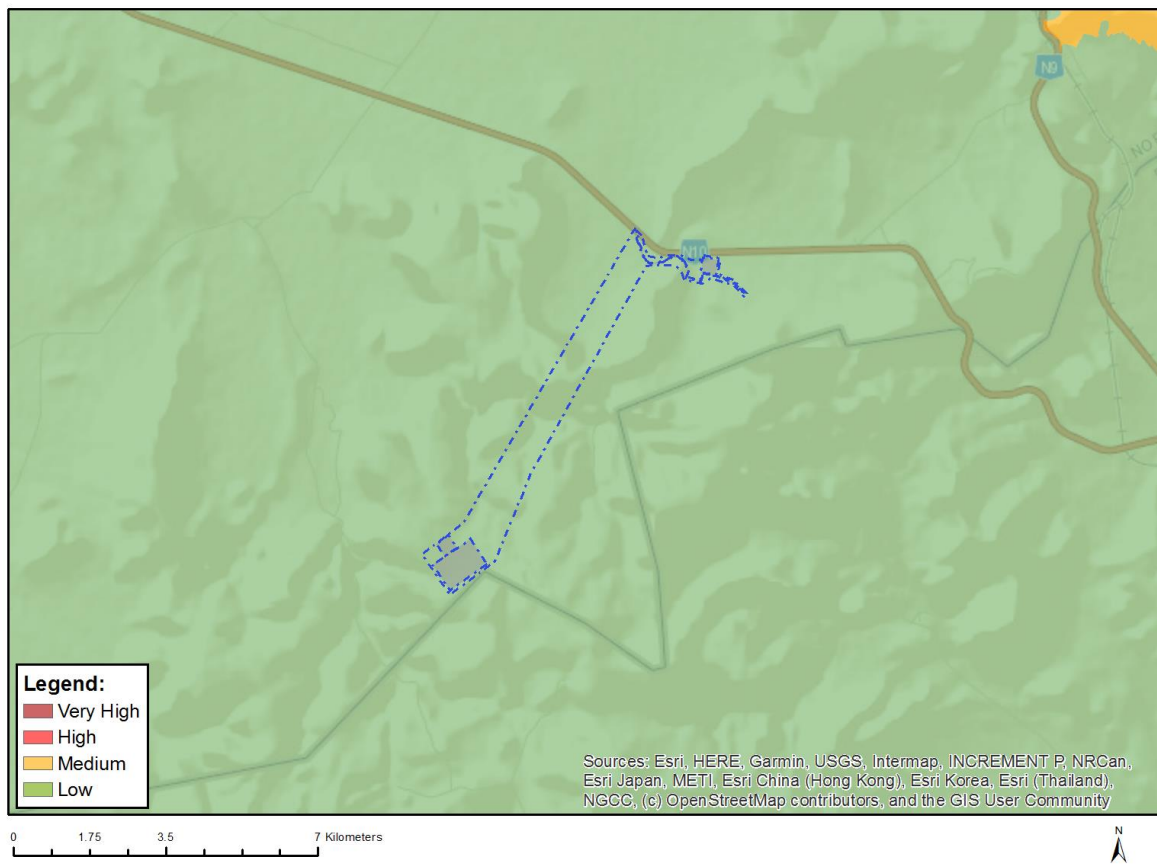


Very High sensitivity	High sensitivity	Medium sensitivity	Low sensitivity
X			

Sensitivity Features:

Sensitivity	Feature(s)
Medium	Features with a Medium paleontological sensitivity
Very High	Features with a Very High paleontological sensitivity

MAP OF RELATIVE PLANT SPECIES THEME SENSITIVITY



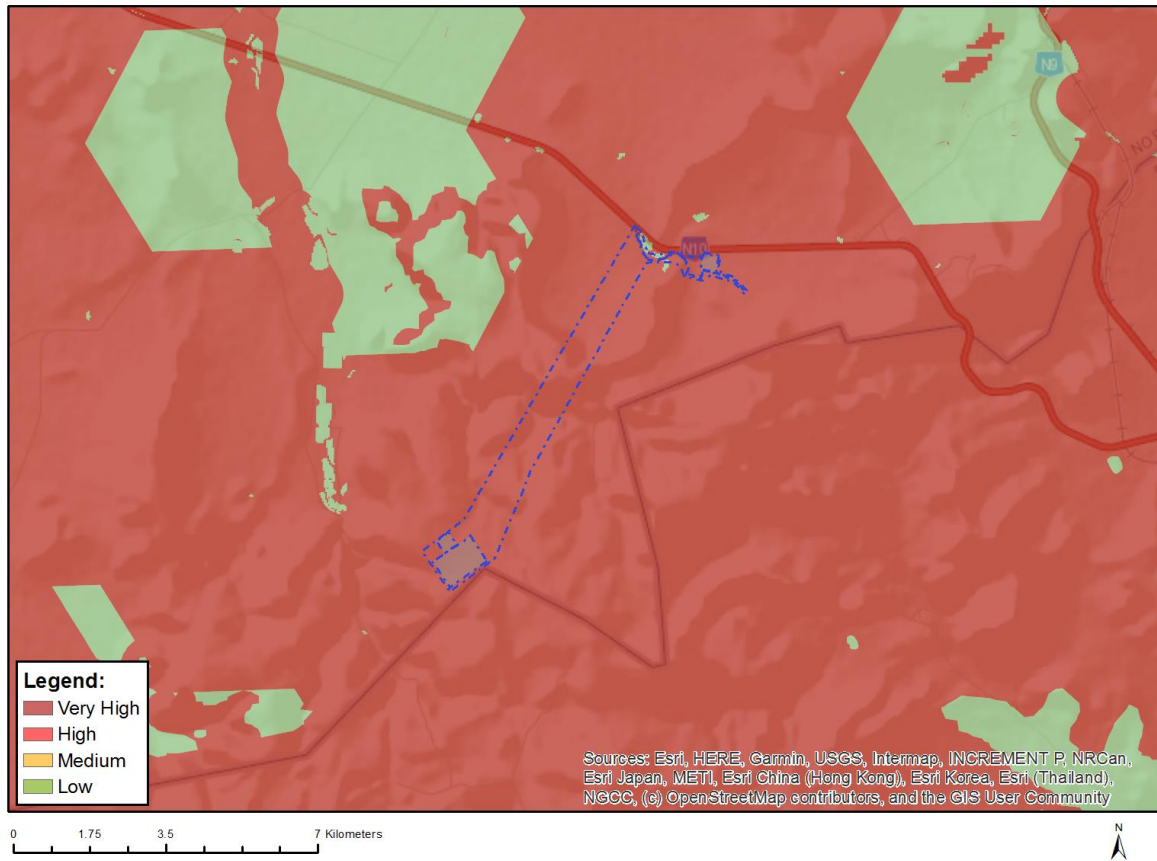
Where only a sensitive plant unique number or sensitive animal unique number is provided in the screening report and an assessment is required, the environmental assessment practitioner (EAP) or specialist is required to email SANBI at eiadatarequests@sanbi.org.za listing all sensitive species with their unique identifiers for which information is required. The name has been withheld as the species may be prone to illegal harvesting and must be protected. SANBI will release the actual species name after the details of the EAP or specialist have been documented.

Very High sensitivity	High sensitivity	Medium sensitivity	Low sensitivity
			X

Sensitivity Features:

Sensitivity	Feature(s)
Low	Low Sensitivity

MAP OF RELATIVE TERRESTRIAL BIODIVERSITY THEME SENSITIVITY



Very High sensitivity	High sensitivity	Medium sensitivity	Low sensitivity
X			

Sensitivity Features:

Sensitivity	Feature(s)
Low	Low Sensitivity
Very High	Critical biodiversity area 1
Very High	Critical biodiversity area 2