

**SCREENING REPORT FOR AN ENVIRONMENTAL AUTHORIZATION OR  
FOR A PART TWO AMENDMENT OF AN ENVIRONMENTAL AUTHORISATION  
AS REQUIRED BY THE 2014 EIA REGULATIONS – PROPOSED SITE  
ENVIRONMENTAL SENSITIVITY**

**EIA Reference number:**

**Project name:** KHUTSONG SOUTH EXTENSION 8 HOUSING DEVELOPMENT

**Project title:** PROPOSED KHUTSONG SOUTH EXTENSION 8 HOUSING DEVELOPMENT SITUATED NEAR CARLETONVILLE WITHIN THE MERA FONG CITY MUNICIPALITY, WEST RAND DISTRICT MUNICIPALITY, GAUTENG

**Date screening report generated:** 31/01/2020 10:08:56

**Applicant:** GAUTENG DEPARTMENT OF HUMAN SETTLEMENTS

**Compiler:** Afzelia Environmental Consultants (PTY) Ltd

**Compiler signature:**

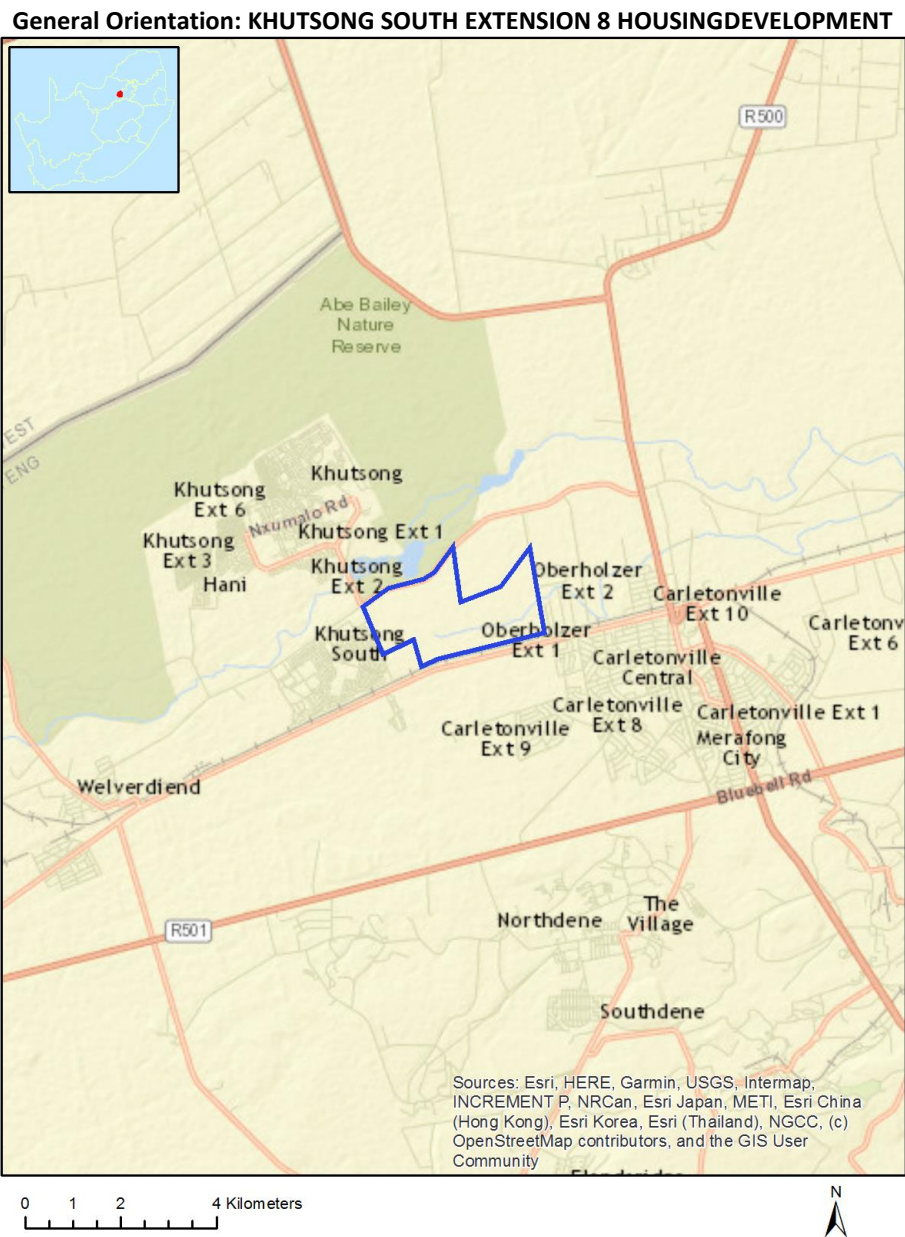
.....

## Table of Contents

Proposed Project Location .....	3
Orientation map 1: General location .....	3
Map of proposed site and relevant area(s) .....	4
Cadastral details of the proposed site .....	4
Wind and Solar developments with an approved Environmental Authorisation or applications under consideration within 30 km of the proposed area .....	5
Environmental Management Frameworks relevant to the application .....	5
Environmental screening results and assessment outcomes .....	5
Relevant development incentives, restrictions, exclusions or prohibitions .....	6
Map indicating proposed development footprint within applicable development incentive, restriction, exclusion or prohibition zones .....	7
Proposed Development Area Environmental Sensitivity .....	7
Specialist assessments identified .....	8
Results of the environmental sensitivity of the proposed area .....	10
MAP OF RELATIVE AGRICULTURE THEME SENSITIVITY .....	10
MAP OF RELATIVE ANIMAL SPECIES THEME SENSITIVITY .....	11
MAP OF RELATIVE AQUATIC BIODIVERSITY THEME SENSITIVITY .....	12
MAP OF RELATIVE ARCHAEOLOGICAL AND CULTURAL HERITAGE THEME SENSITIVITY .....	13
MAP OF RELATIVE CIVIL AVIATION THEME SENSITIVITY .....	14
MAP OF RELATIVE PLANT SPECIES THEME SENSITIVITY .....	15
MAP OF RELATIVE DEFENCE THEME SENSITIVITY .....	16
MAP OF RELATIVE TERRESTRIAL BIODIVERSITY THEME SENSITIVITY .....	17

# Proposed Project Location

Orientation map 1: General location



## Map of proposed site and relevant area(s)



## Cadastral details of the proposed site

Property details:

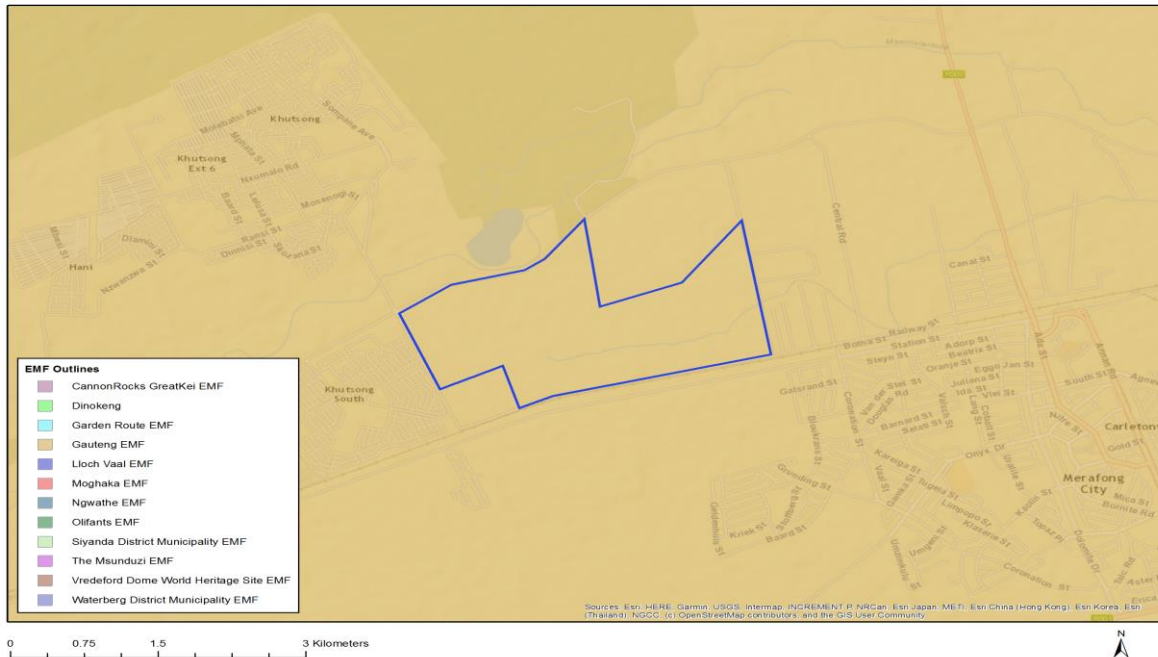
No	Farm Name	Farm/ Erf No	Portion	Latitude	Longitude	Property Type
1	WONDERFONTEIN	103	0	26°18'35.31S	27°23'22.75E	Farm
2	UITSPANNING AAN WONDERFONTEIN	104	0	26°20'37.99S	27°20'20.82E	Farm
3	WONDERFONTEIN	103	107	26°20'8.3S	27°21'21.51E	Farm Portion
4	WONDERFONTEIN	103	65	26°19'58.9S	27°21'59.18E	Farm Portion
5	WONDERFONTEIN	103	20	26°20'49.78S	27°20'57.75E	Farm Portion
6	WONDERFONTEIN	103	63	26°20'7.97S	27°22'0.8E	Farm Portion
7	WONDERFONTEIN	103	117	26°20'46.72S	27°21'16.63E	Farm Portion
8	WONDERFONTEIN	103	121	26°20'40.5S	27°21'36.42E	Farm Portion
9	UITSPANNING AAN WONDERFONTEIN	104	6	26°21'9.53S	27°20'23.96E	Farm Portion
10	WONDERFONTEIN	103	60	26°20'21.8S	27°22'3.75E	Farm Portion
11	UITSPANNING AAN WONDERFONTEIN	104	0	26°20'36.27S	27°20'7.78E	Farm Portion
12	WONDERFONTEIN	103	59	26°20'39.98S	27°21'57.93E	Farm Portion
13	WONDERFONTEIN	103	116	26°20'32.07S	27°21'49.49E	Farm Portion
14	WONDERFONTEIN	103	64	26°20'3.49S	27°21'59.86E	Farm Portion
15	WONDERFONTEIN	103	105	26°20'19.52S	27°20'53.69E	Farm Portion
16	WONDERFONTEIN	103	122	26°19'53.2S	27°20'49.06E	Farm Portion
17	UITSPANNING AAN WONDERFONTEIN	104	1	26°20'27.96S	27°20'31.64E	Farm Portion
18	WONDERFONTEIN	103	61	26°20'17.32S	27°22'3.04E	Farm Portion
19	WONDERFONTEIN	103	62	26°20'12.66S	27°22'1.88E	Farm Portion

Development footprint<sup>1</sup> vertices:  
 No development footprint(s) specified.

## Wind and Solar developments with an approved Environmental Authorisation or applications under consideration within 30 km of the proposed area

No nearby wind or solar developments found.

## Environmental Management Frameworks relevant to the application



Environmental Management Framework	LINK
Gauteng EMF	<a href="https://screening.environment.gov.za/ScreeningDownloads/EMF/Zone_1, Zone_2, Zone_3, Zone_4, Zone_5.pdf">https://screening.environment.gov.za/ScreeningDownloads/EMF/Zone_1, Zone_2, Zone_3, Zone_4, Zone_5.pdf</a>

## Environmental screening results and assessment outcomes

The following sections contain a summary of any development incentives, restrictions, exclusions or prohibitions that apply to the proposed development site as well as the most environmental

<sup>1</sup> “development footprint”, means the area within the site on which the development will take place and includes all ancillary developments for example roads, power lines, boundary walls, paving etc. which require vegetation clearance or which will be disturbed and for which the application has been submitted.

sensitive features on the site based on the site sensitivity screening results for the application classification that was selected. The application classification selected for this report is:  
Any activities within or close to a watercourse|Any activities within or close to a watercourse.

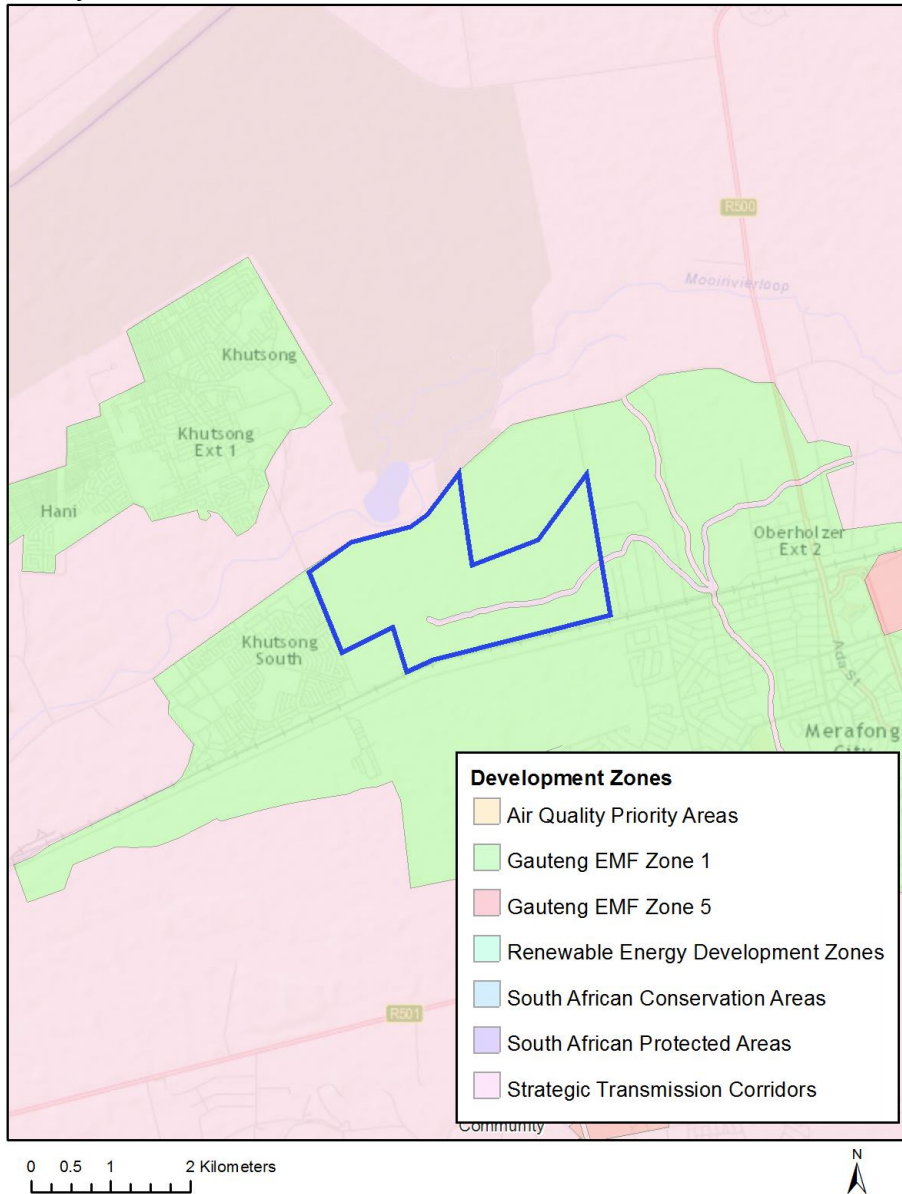
### Relevant development incentives, restrictions, exclusions or prohibitions

The following development incentives, restrictions, exclusions or prohibitions and their implications that apply to this site are indicated below.

<b>Incentive, restriction or prohibition</b>	<b>Implication</b>
Strategic Transmission Corridor-Central corridor	<a href="https://screening.environment.gov.za/ScreeningDownloads/DevelopmentZones/GNR_350_of_13_April_2017.pdf">https://screening.environment.gov.za/ScreeningDownloads/DevelopmentZones/GNR_350_of_13_April_2017.pdf</a>
Gauteng EMF-Urban development zone 1	<a href="https://screening.environment.gov.za/ScreeningDownloads/DevelopmentZones/Zone_1.pdf">https://screening.environment.gov.za/ScreeningDownloads/DevelopmentZones/Zone_1.pdf</a>

Map indicating proposed development footprint within applicable development incentive, restriction, exclusion or prohibition zones

**Project Location: KHUTSONG SOUTH EXTENSION 8 HOUSING DEVELOPMENT**



**Proposed Development Area Environmental Sensitivity**

The following summary of the development site environmental sensitivities is identified. Only the highest environmental sensitivity is indicated. The footprint environmental sensitivities for the proposed development footprint as identified, are indicative only and must be verified on site by a suitably qualified person before the specialist assessments identified below can be confirmed.

Theme	Very High sensitivity	High sensitivity	Medium sensitivity	Low sensitivity
Agriculture Theme		X		
Animal Species Theme			X	

Aquatic Biodiversity Theme	X			
Archaeological and Cultural Heritage Theme		X		
Civil Aviation Theme		X		
Plant Species Theme			X	
Defence Theme				X
Terrestrial Biodiversity Theme	X			

### Specialist assessments identified

Based on the selected classification, and the environmental sensitivities of the proposed development footprint, the following list of specialist assessments have been identified for inclusion in the assessment report. It is the responsibility of the EAP to confirm this list and to motivate in the assessment report, the reason for not including any of the identified specialist study including the provision of photographic evidence of the site situation.

<b>N o</b>	<b>Specialist assessment</b>	<b>Assessment Protocol</b>
1	Landsc ape/Visual Impact Assessment	<a href="https://screening.environment.gov.za/ScreeningDownloads/AssessmentProtocols/DraftGazetted_General_Requirement_Assessment_Protocols.pdf">https://screening.environment.gov.za/ScreeningDownloads/AssessmentProtocols/DraftGazetted_General_Requirement_Assessment_Protocols.pdf</a>
2	Archaeological and Cultural Heritage Impact Assessment	<a href="https://screening.environment.gov.za/ScreeningDownloads/AssessmentProtocols/DraftGazetted_General_Requirement_Assessment_Protocols.pdf">https://screening.environment.gov.za/ScreeningDownloads/AssessmentProtocols/DraftGazetted_General_Requirement_Assessment_Protocols.pdf</a>
3	Palaeontology Impact Assessment	<a href="https://screening.environment.gov.za/ScreeningDownloads/AssessmentProtocols/DraftGazetted_General_Requirement_Assessment_Protocols.pdf">https://screening.environment.gov.za/ScreeningDownloads/AssessmentProtocols/DraftGazetted_General_Requirement_Assessment_Protocols.pdf</a>
4	Terrestrial Biodiversity Impact Assessment	<a href="https://screening.environment.gov.za/ScreeningDownloads/AssessmentProtocols/DraftGazetted_Terrestrial_Biodiversity_Assessment_Protocols.pdf">https://screening.environment.gov.za/ScreeningDownloads/AssessmentProtocols/DraftGazetted_Terrestrial_Biodiversity_Assessment_Protocols.pdf</a>
5	Aquatic Biodiversity Impact Assessment	<a href="https://screening.environment.gov.za/ScreeningDownloads/AssessmentProtocols/DraftGazetted_Aquatic_Biodiversity_Assessment.pdf">https://screening.environment.gov.za/ScreeningDownloads/AssessmentProtocols/DraftGazetted_Aquatic_Biodiversity_Assessment.pdf</a>
6	Hydrology Assessment	<a href="https://screening.environment.gov.za/ScreeningDownloads/AssessmentProtocols/DraftGazetted_General_Requirement_Assessment_Protocols.pdf">https://screening.environment.gov.za/ScreeningDownloads/AssessmentProtocols/DraftGazetted_General_Requirement_Assessment_Protocols.pdf</a>
7	Socio-Economic	<a href="https://screening.environment.gov.za/ScreeningDownloads/AssessmentProtocols/DraftGazetted_General_Requirement_Assessment_Protocols.pdf">https://screening.environment.gov.za/ScreeningDownloads/AssessmentProtocols/DraftGazetted_General_Requirement_Assessment_Protocols.pdf</a>

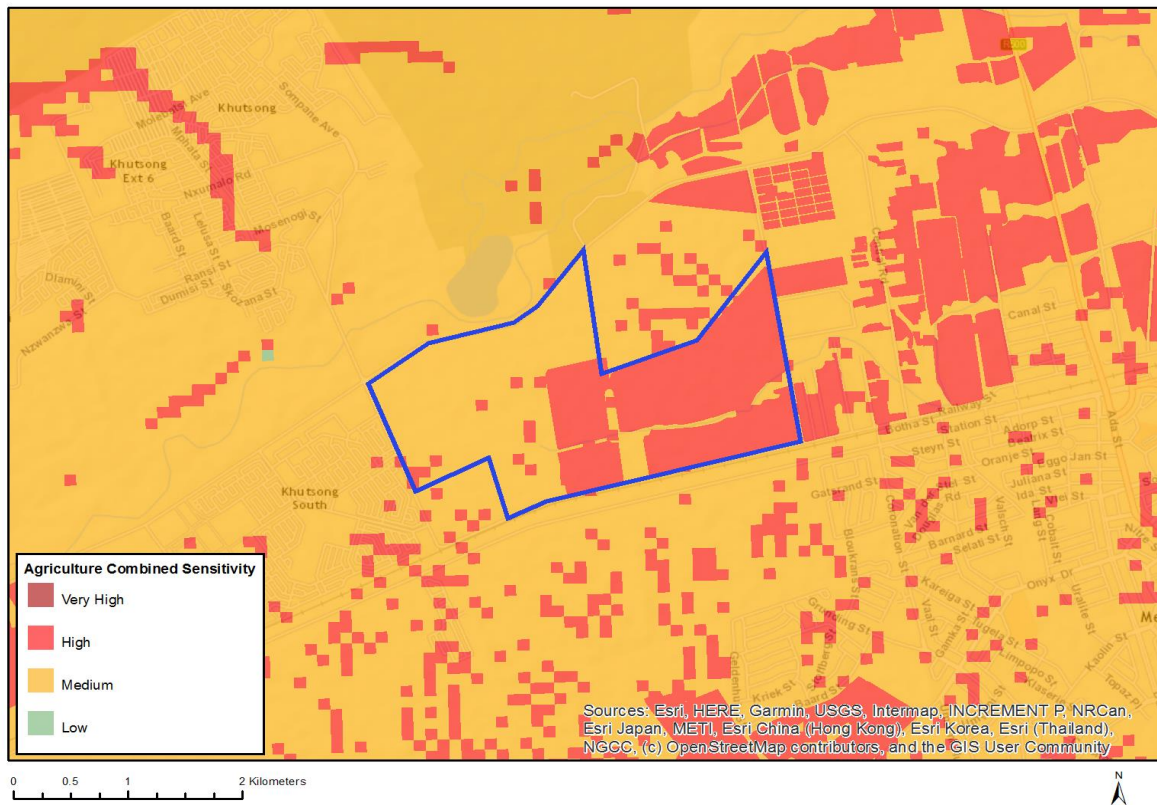


	Assessment	
8	Plant Species Assessment	<a href="https://screening.environment.gov.za/ScreeningDownloads/AssessmentProtocols/DraftGazetted_General_Requirement_Assessment_Protocols.pdf">https://screening.environment.gov.za/ScreeningDownloads/AssessmentProtocols/DraftGazetted_General_Requirement_Assessment_Protocols.pdf</a>
9	Animal Species Assessment	<a href="https://screening.environment.gov.za/ScreeningDownloads/AssessmentProtocols/DraftGazetted_General_Requirement_Assessment_Protocols.pdf">https://screening.environment.gov.za/ScreeningDownloads/AssessmentProtocols/DraftGazetted_General_Requirement_Assessment_Protocols.pdf</a>

## Results of the environmental sensitivity of the proposed area.

The following section represents the results of the screening for environmental sensitivity of the proposed site for relevant environmental themes associated with the project classification. It is the duty of the EAP to ensure that the environmental themes provided by the screening tool are comprehensive and complete for the project. Refer to the disclaimer.

### MAP OF RELATIVE AGRICULTURE THEME SENSITIVITY

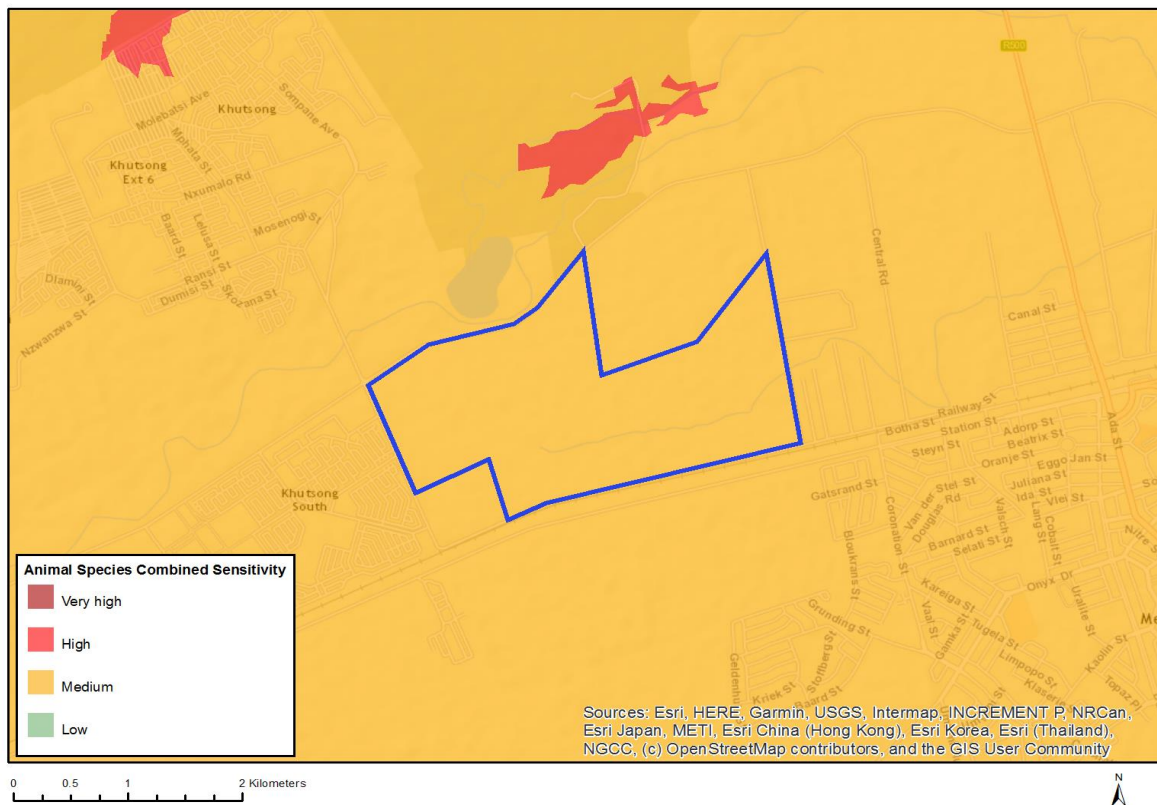


Very High sensitivity	High sensitivity	Medium sensitivity	Low sensitivity
	X		

#### Sensitivity Features:

Sensitivity	Feature(s)
High	Land capability;09. Moderate-High/10. Moderate-High
High	Annual Crop Cultivation / Planted Pastures Rotation;Land capability;09. Moderate-High/10. Moderate-High
High	Annual Crop Cultivation / Planted Pastures Rotation;Land capability;06. Low-Moderate/07. Low-Moderate/08. Moderate
Medium	Land capability;06. Low-Moderate/07. Low-Moderate/08. Moderate

## MAP OF RELATIVE ANIMAL SPECIES THEME SENSITIVITY

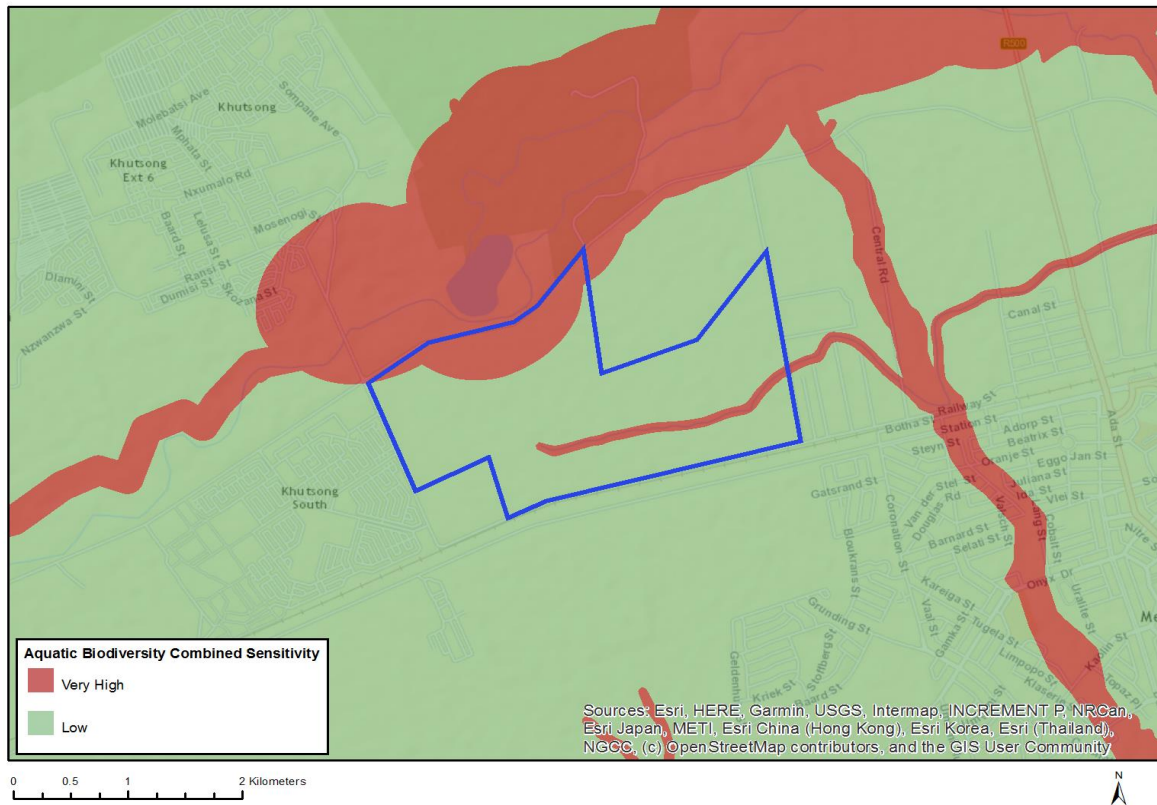


Very High sensitivity	High sensitivity	Medium sensitivity	Low sensitivity
		X	

### Sensitivity Features:

Sensitivity	Feature(s)
Medium	Insecta-Lepidochrysops praeterita
Medium	Insecta-Aloeides dentatis dentatis
Medium	Mammalia-Ourebia ourebi ourebi
Medium	Mammalia-Hydrictis maculicollis

## MAP OF RELATIVE AQUATIC BIODIVERSITY THEME SENSITIVITY

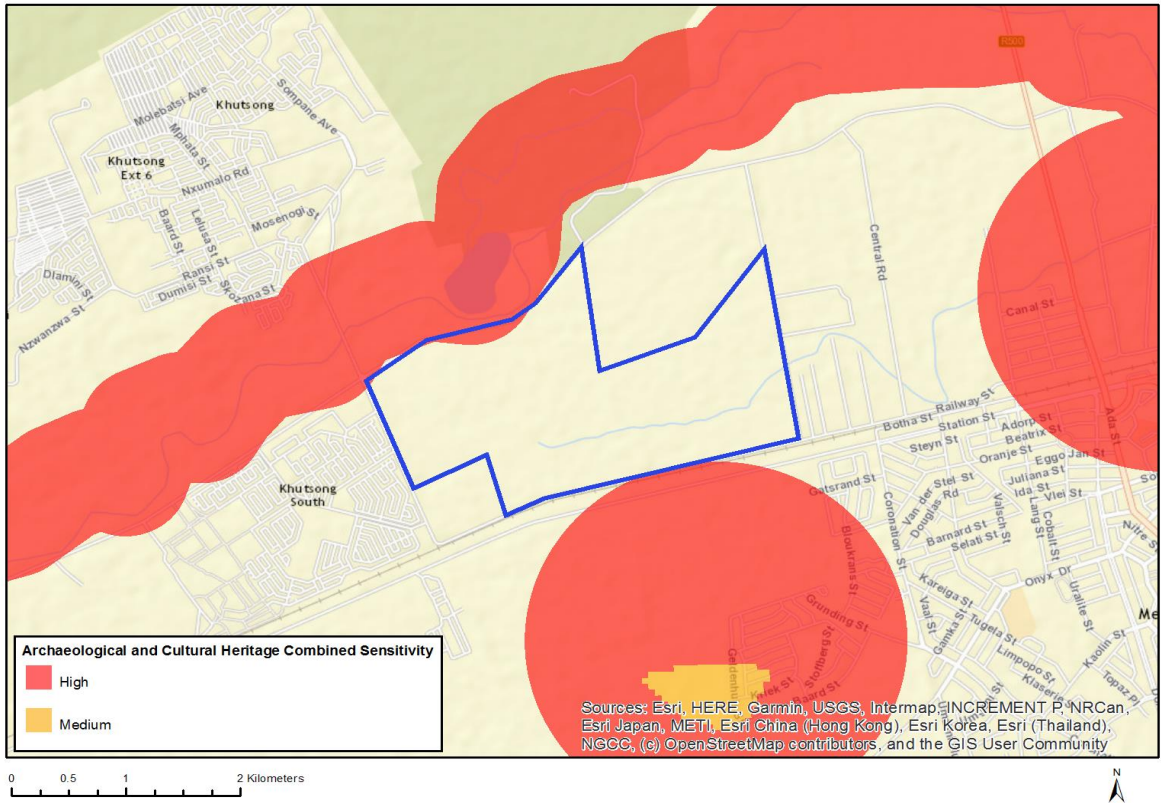


Very High sensitivity	High sensitivity	Medium sensitivity	Low sensitivity
X			

### Sensitivity Features:

Sensitivity	Feature(s)
Low	Low Sensitivity Areas
Very High	River, Ecological support area

# MAP OF RELATIVE ARCHAEOLOGICAL AND CULTURAL HERITAGE THEME SENSITIVITY

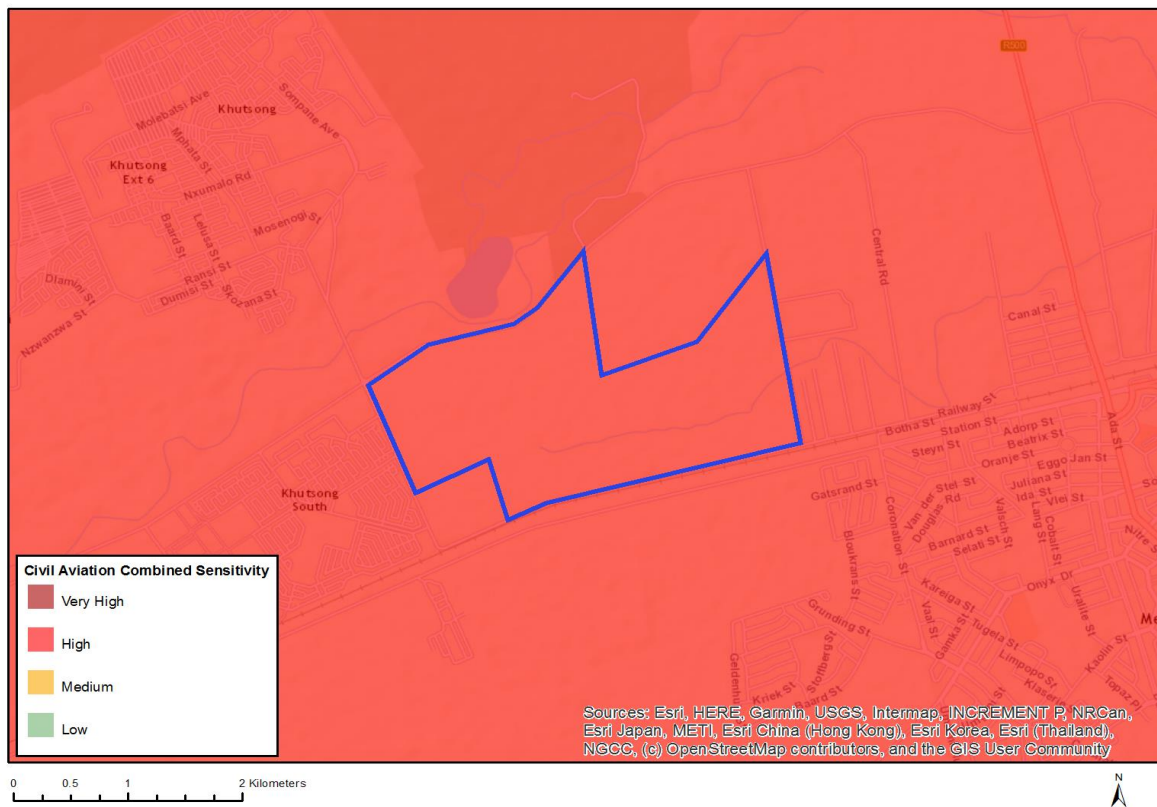


Very High sensitivity	High sensitivity	Medium sensitivity	Low sensitivity
	X		

## Sensitivity Features:

Sensitivity	Feature(s)
High	Within 500 m of an important river
High	Within 500 m of a heritage site

## MAP OF RELATIVE CIVIL AVIATION THEME SENSITIVITY

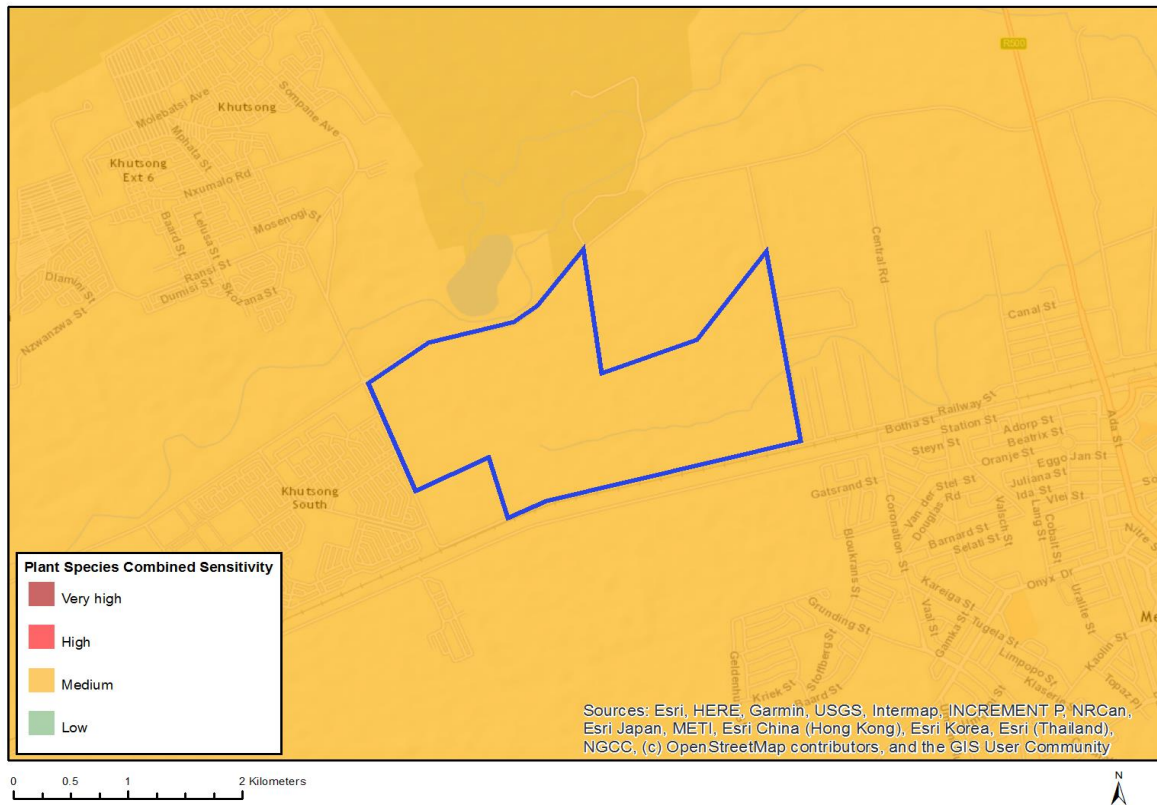


Very High sensitivity	High sensitivity	Medium sensitivity	Low sensitivity
	X		

### Sensitivity Features:

Sensitivity	Feature(s)
High	Within 8 km of other civil aviation aerodrome

## MAP OF RELATIVE PLANT SPECIES THEME SENSITIVITY

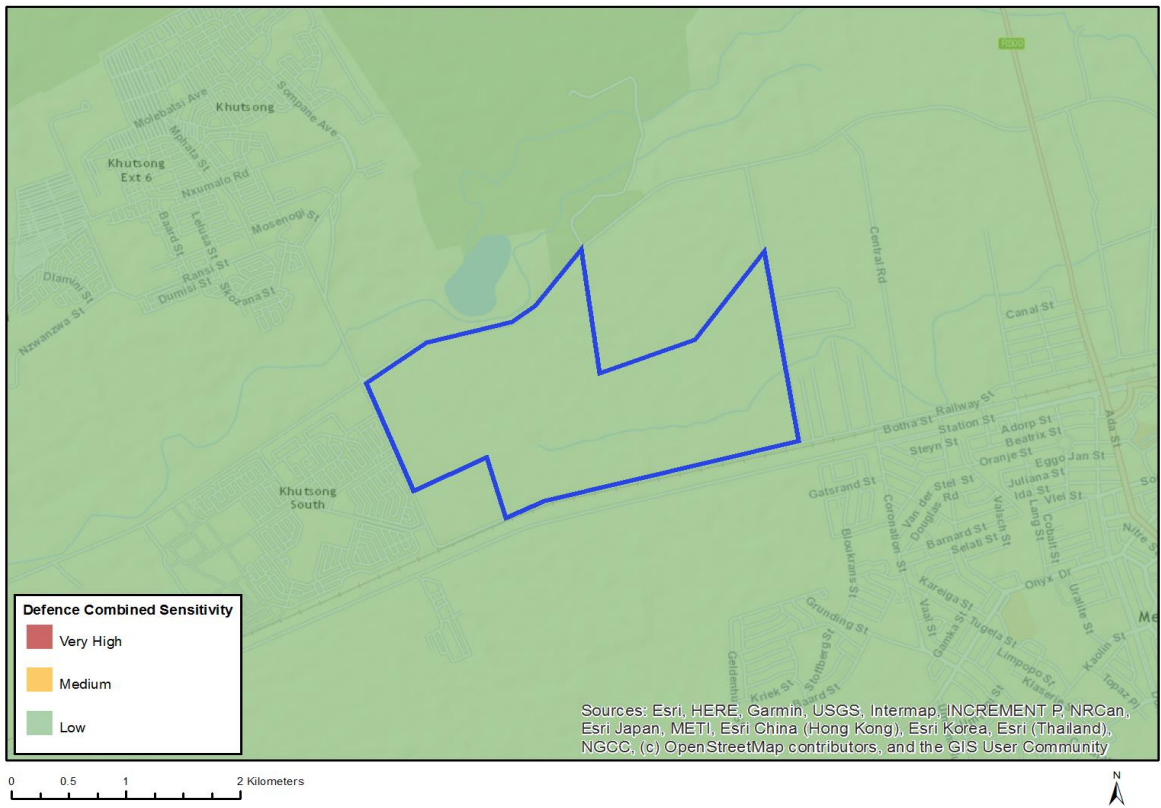


Very High sensitivity	High sensitivity	Medium sensitivity	Low sensitivity
		X	

### Sensitivity Features:

Sensitivity	Feature(s)
Medium	Sensitive species 470
Medium	Khadia beswickii

# MAP OF RELATIVE DEFENCE THEME SENSITIVITY



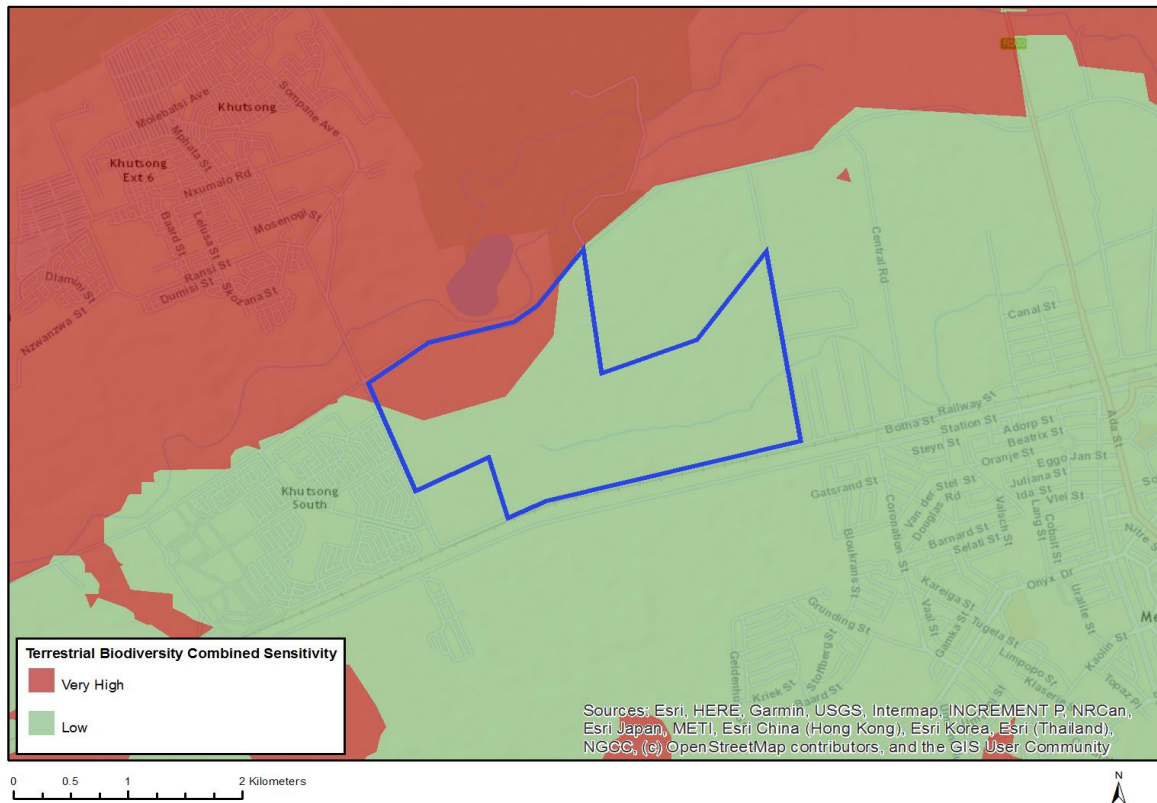
Very High sensitivity	High sensitivity	Medium sensitivity	Low sensitivity
			X

## Sensitivity Features:

Sensitivity	Feature(s)
Low	Low sensitivity



## MAP OF RELATIVE TERRESTRIAL BIODIVERSITY THEME SENSITIVITY



Very High sensitivity	High sensitivity	Medium sensitivity	Low sensitivity
X			

### Sensitivity Features:

Sensitivity	Feature(s)
Low	None
Very High	Ecological Support Area 1
Very High	Critical Biodiversity Area 1